

District I - (575) 393-6161  
 1625 N. French Dr., Hobbs, NM 88240  
 District II - (575) 748-1283  
 811 S. First St., Artesia, NM 88210  
 District III - (505) 334-6178  
 1000 Rio Brazos Rd., Aztec, NM 87410  
 District IV - (505) 476-3460  
 1220 S. St. Francis Dr., Santa Fe, NM 87505

**OIL CONSERVATION DIVISION**  
 1220 South St. Francis Dr.  
 Santa Fe, NM 87505

WELL API NO. 30- 025 -26974
5. Indicate Type of Lease STATE <input type="checkbox"/> FEE <input checked="" type="checkbox"/>
6. State Oil & Gas Lease No.
7. Lease Name or Unit Agreement Name NBR
8. Well Number 1
9. OGRID Number 16696
10. Pool name or Wildcat SWD Bell Canyon, Cherry Canyon
11. Elevation (Show whether DR, RKB, RT, GR, etc.) 3631'

**SUNDRY NOTICES AND REPORTS ON WELLS**  
 (DO NOT USE THIS FORM FOR PROPOSALS TO DRILL OR TO DEEPEN OR PLUG BACK TO A DIFFERENT RESERVOIR. USE "APPLICATION FOR PERMIT" (FORM C-101) FOR SUCH PROPOSALS.)

1. Type of Well: Oil Well ☐ Gas Well ☒ Other SWD-1420-1A

2. Name of Operator  
OXY USA Inc.

3. Address of Operator  
P.O. Box 50250 Midland, TX 79710

4. Well Location  
 Unit Letter J : 1980 feet from the south line and 1980 feet from the east line  
 Section 18 Township 22S Range 33E NMPM County Lea

12. Check Appropriate Box to Indicate Nature of Notice, Report or Other Data

**NOTICE OF INTENTION TO:**

PERFORM REMEDIAL WORK ☐ PLUG AND ABANDON ☐  
 TEMPORARILY ABANDON ☐ CHANGE PLANS ☐  
 PULL OR ALTER CASING ☐ MULTIPLE COMPL ☐  
 DOWNHOLE COMMINGLE ☐  
 CLOSED-LOOP SYSTEM ☐  
 OTHER: ☐

**SUBSEQUENT REPORT OF:**

REMEDIAL WORK ☐ ALTERING CASING ☐  
 COMMENCE DRILLING OPNS. ☐ P AND A ☐  
 CASING/CEMENT JOB ☐

OTHER: Part Add'l Interval, Acidize ☒

13. Describe proposed or completed operations. (Clearly state all pertinent details, and give pertinent dates, including estimated date of starting any proposed work). SEE RULE 19.15.7.14 NMAC. For Multiple Completions: Attach wellbore diagram of proposed completion or recompletion.

See Attached

Spud Date:

Rig Release Date:

I hereby certify that the information above is true and complete to the best of my knowledge and belief.

SIGNATURE David Stewart TITLE Sr. Regulatory Advisor DATE 8/12/16

Type or print name David Stewart E-mail address: david\_stewart@oxy.com PHONE: 432-685-5717

For State Use Only

APPROVED BY: [Signature] TITLE Petroleum Engineer DATE 08/17/16

Conditions of Approval (if any):

Attachment C-103  
NBR #1 - 30-025-26976

Date	Remarks
2/5/16	NIRU WL, RIH W/ RADIOACTIVE TRACER INJECTOR TOOL, GAMMA DETECTOR & TEMPATURE TOOL, PERFORMED TEMP LOG W/ PUMP RUNNING, THEN INJECTED SLUG OF IODINE TO PACKER @ 4987', CHASED DOWN TO PERFORATIONS. SHUT PUMP OFF, GOT TEMP LOGS W/ PUMP OFF & THEN CHECKED FOR CHANNEL UP/CROSSFLOW, POSSIBLE CHANNEL DOWN FROM 5810-5900'. SI, CROSSFLOW TEST SHOWS FLUID COMING IN FROM 5030-5040' @ 320 BBLS PER DAY. PERFS TAKEN INJECTION ON DOWNWARD CHANNEL. RDWL, PUT WELL BACK ON INJECTION, SET PUMP @ .90BBL/MIN 950 PSI.
3/21/16	FLOWBACK CREW FLOWING WELL BACK W/ 10 PSI TBG, MAKING 45 BBLS AN HOUR. SIW PRESSURE BUILT UP TO 110 PSI IN 2 MINS, OPENED WELL BACK UP, MOVE FLOWBACK EQUIPMENT, RUPU, WO WL. CHECKED WELL PRESSURE AFTER 2 HRS WAS 200 PSI, LEFT SI. CHECKED AFTER ANOTHER 2 HRS WELL WAS AT 240 PSI. OPENED UP WELL AND FLOWED BACK PSI WENT DOWN TO 15 PSI. RU WL, SET BLANKING PLUG AT 4981', PRESSURED UP ON TBG TO 600 PSI, HELD GOOD, POOH, RD WL. ND WH, FUNCTION TESTED BOP, GOOD TEST, NU 10K X 5K SPOOL & 5K HYD BOP. RELEASED OFF PACKER & TUBING, BLEED IT DOWN, LET EQUALIZE.
3/22/16	TP = 0#, CP = 0#. POOH W/ TBG & LD. START TO RIH W/ WS TBG.
3/23/16	ITP = 0#, CP = 0#. RIH & TAG PKR, PUMP60 BBLS MUD, REL PKR, CSG STARTED FLWG, ATTEMPT TO RU WL, SI RU VALVE.
3/24/16	TP = 120#, CP = 120#. RU WL & FISH OUT BLK PLG, CIRC CSG W/ 10# MUD, POOH W/ PKR. PU BIT & SCRAPER, RIH TO WHERE PKR WAS SET.
3/28/16	TP = 160#, CP = 100#. BLEED OFF PRESSURE, RIH & TAG UP @ 6634, START TO pooh, RIG BROKE DOWN, SI.
3/29/16	TP = 70#, CP = 50#. BLEED OFF PRESSURE, CIRC HOLE W/ 10# MLF, POOH W/ TBG. RU WL, RIH TO 5873', HAD MIS-FIRE ON FIRST RUN, CHG OUT CCL. RIH & PERF 6 SPF @ 5892-5875, 5695-5685, 5550-5530, 5505-5495, 5483-5473, 5456-5444, 5435-5427, 5418-5414, 5390-5378, 5358-5348', 5228-5215, 5185-5165', TOTAL 870 SHOTS, RD WL, START TO RIH W/ RBP & PKR.
3/30/16	CP = 80#, BLEED CASING DOWN & PUT MUD BACK INTO THE MUD TANK, UNABLE TO NOT GET THE WELL TO BLEED DOWN, ORDER MORE MUD FOR 14#.
3/31/16	CP = 300#, BLEED WELL DOWN TO 100#, M&P 14# MUD FOLLOWED BY 10# MUD TO KILL WELL. RIH W/ RBP, ATTEMPT TO SET, WOULD NOT SET, RIH TO BOTTOM & GOT RBP, PUH AND ATTEMPT TO SET AGAIN, IT WOULDN'T SET, ATTEMPT ONE MORE TIME W/O SUCCESS, POOH. RIH W/ RBP & SET @ 5990'. PUH W/ PKR, ATTEMPT TO TEST, NOT SUCCESSFUL, PUH W/ PKR ABOVE PERFS.
4/1/16	TP = 50#, CP = 0# RIH & SET PKR @ 4974', LOAD CSG, PRESSURE TO 500#, HELD GOOD. PUMP 10000 GALS 15% HCL ACID @ 4BPM @ 1360#, FLUSH W/ 83 BBLS, ISIP 600#, 5 MIN 500#, 10 MIN 300#, 15 MIN 250#. SI 4 HRS, 200#, OPEN UP TO FLOW BACK TANK, FLOWED BACK 204 BBLS. SI
4/2/16	TP = 260#, CP = 0#. OPEN WELL, CONTINUE FLOW BACK TO TANK, FLOWED BACK TOTAL 450 BBLS, THEN PUMP 15 BBLS BRINE AND 7 BBLS 14# MUD. UNSET PKR, RIH & LATCH ONTO RBP, POOH & LD WS TBG, PKR & RBP. RIH W/ 64 JTS TBG, SI.
4/4/16	TP = 0#, CP = 20#, RU TESTERS, PU PKR & RIH W/ 2-7/8" COMPOSITE TBG & TEST, SET PKR @ 4991', LOAD CSG, PRESSURE TO 600#, HELD GOOD, CIRC HOLE W/ PKR FLUID. Notify NMOCD of MIT.
4/5/16	TP = 0#, CP = 0#. ND BOP, NU WH, PRESSURE CSG TO 550#, CSG INTEGRITY TEST FOR 30 MIN, RU WL, RIH & POOH W/ BLK PLUG. START STEP RATE TEST. 1.0 bpm - start 300# - end 450#. 1.25 bpm start 550# end 600#. 1.50 bpm start 650# end 800#. 1.75 bpm start 850# end 900#. 2.00 bpm start 950# end 1050#. 2.25 bpm start 1150# end 1150#. 2.50 bpm start 1250# end 1350#. 2.75 bpm start 1400# end 1200#. 3.00 bpm start 1300# end 1400#. 3.25 bpm start 1400# end 1450#. 3.50 bpm start 1500# end 1600#. Total fluid pumped 425 bbls.
4/6/16	RD PU, TURN WELL OVER TO PRODUCTION.



OXY USA Inc. - Current  
NBR #1  
API No. 30-025-26976

2-7/8" 6.5# J55 compsite tbg @ 4991' &  
Arrowset X pkr @ 4991'

CIBP @ 6817' w/ 30sx to 6775' Tagged

30sx @ 8668-8565' Tagged

30sx @ 9823-9723'  
9/07-CIBP @ 9823'

2/03-CIBP @ 11100'

2/03-CIBP @ 11868' w/ 60sx cmt 11540'-Tagged

2/03-CIBP @ 13720' w/ 50' cmt

12/96-CIBP @ 13910'  
7/91-CIBP @ 14725' w/ 50' cmt

17-1/2" hole @ 762'  
13-3/8" csg @ 762'  
w/ 870sx-TOC-Surf-Circ

12-1/4" hole @ 5006'  
10-3/4" csg @ 5006'  
w/ 3135sx-TOC-Surf-Circ

Perf @ 5220' sqz 220sx cmt, TOC-4710'  
Perfs @ 5030-5960'

Perf @ 9898-9920'

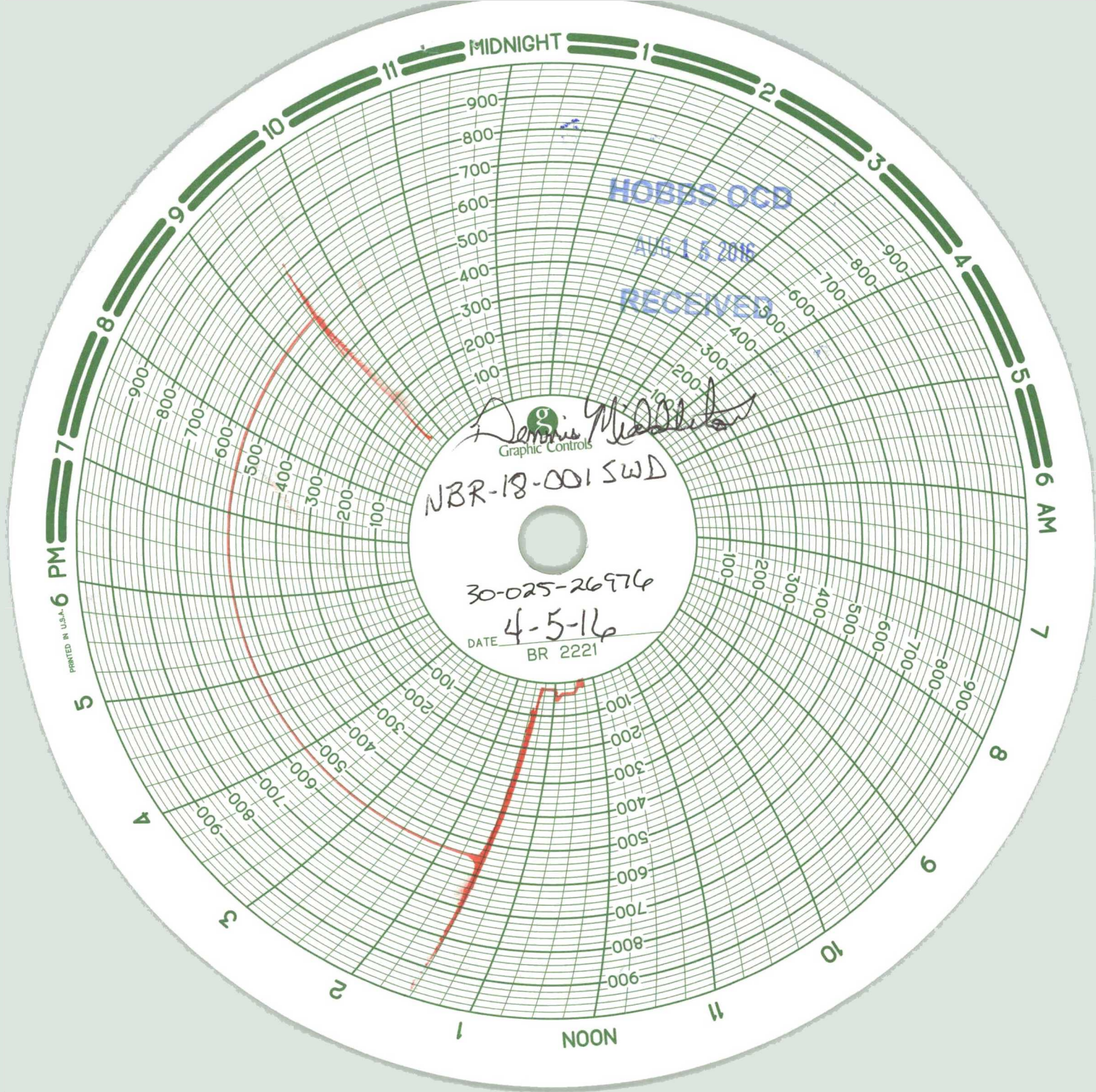
Perf @ 11160-11184'  
9-1/2" hole @ 12066'  
7-5/8" csg @ 12066'  
w/ 2040sx-TOC-5240'-CBL

6-1/4" hole @ 15372'  
5" liner @ 11768-15120'  
w/ 580sx-TOC-11768'-Circ

Perfs @ 13756-13895'  
Perfs @ 13921-13927'

Perfs @ 14739-14956'

TD-15372'



MIDNIGHT

HOBBS OCD

AUG 1 & 2016

RECEIVED

Graphic Controls

NBR-18-001 SWD

30-025-26976

DATE 4-5-16  
BR 2221

PRINTED IN U.S.A.