

Submit 1 Copy To Appropriate District Office

District I

1625 N. French Dr., Hobbs, NM 88240

District II

1301 W. Grand Ave., Artesia, NM 88210

District III

1000 Rio Brazos Rd., Aztec, NM 87410

District IV

1220 S. St. Francis Dr., Santa Fe, NM 87505

State of New Mexico

Energy, Minerals and Natural Resources

Form C-103

October 13, 2009

HOBBS OGD
AN 17 2017
RECEIVED

OIL CONSERVATION DIVISION

1220 South St. Francis Dr.

Santa Fe, NM 87505

WELL API NO.

30-005-20809

5. Indicate Type of Lease

STATE ☐

FEE ☒

6. State Oil & Gas Lease No.

7. Lease Name or Unit Agreement Name

Griffin SWD

8. Well Number #004

9. OGRID Number

210091

10. Pool name or Wildcat

SWD; San Andres

SUNDRY NOTICES AND REPORTS ON WELLS
(DO NOT USE THIS FORM FOR PROPOSALS TO DRILL OR TO DEEPEN OR PLUG BACK TO A DIFFERENT RESERVOIR. USE "APPLICATION FOR PERMIT" (FORM C-101) FOR SUCH PROPOSALS.)

1. Type of Well: Oil Well ☐ Gas Well ☒ Other SWD

2. Name of Operator

D.K.D., Production, LLC

3. Address of Operator

PO Box 682, Tatum, NM 88267

4. Well Location

Unit Letter 600 feet from the NM line and 660 feet from the EN line

Section 10

Township 08S Range 32E

County Roosevelt

11. Elevation (Show whether DR, RKB, RT, GR, etc.)

12. Check Appropriate Box to Indicate Nature of Notice, Report or Other Data

NOTICE OF INTENTION TO:

PERFORM REMEDIAL WORK ☐

TEMPORARILY ABANDON ☐

PULL OR ALTER CASING ☐

DOWNHOLE COMMINGLE ☐

PLUG AND ABANDON ☐

CHANGE PLANS ☐

MULTIPLE COMPL ☐

SUBSEQUENT REPORT OF:

REMEDIAL WORK ☒

COMMENCE DRILLING OPNS. ☐

CASING/CEMENT JOB ☐

ALTERING CASING ☐

P AND A ☐

OTHER: ☐

OTHER: Production ☐

13. Describe proposed or completed operations. (Clearly state all pertinent details, and give pertinent dates, including estimated date of starting any proposed work). SEE RULE 19.15.7.14 NMAC. For Multiple Completions: Attach wellbore diagram of proposed completion or recompletion.

1/3/17: Rig up (TWS); rig up dish & BOP; released Baker AD (One) packer; pulled tubing; crimped 3 joints; found bad threads on several joints; laid all old joints down

1/4/17: Found new tubing @ Double R Pipe - 2-3/8 J-55 with TK 70 plastic coating; run back in hole with 4-1/2 packer (SL Shear).

1/5/17: Flush with packer fluid; set packer @ 4064 ft with 14 pts tension on it; then loaded casing with packer fluid and set; ran MIT chart for OCD - tested good. Released rig @ 3:30 PM; cleaned location; left well down due to freezing weather. Will return to disposing as weather permits.

1/9/17: Ran 2nd MIT chart to be sure it will still pass MIT; tested good - chart included with report.

Spud Date:

01/03/2017

Rig Release Date:

1/8/17

I hereby certify that the information above is true and complete to the best of my knowledge and belief.

SIGNATURE

Danny R. Watson

TITLE Owner

DATE 01/13/2017

Type or print name

Danny R. Watson

E-mail address: dkdlc@leaco.net

PHONE: (575)398-3490

For State Use Only

APPROVED BY:

Marky Brown

TITLE

AO/II

DATE

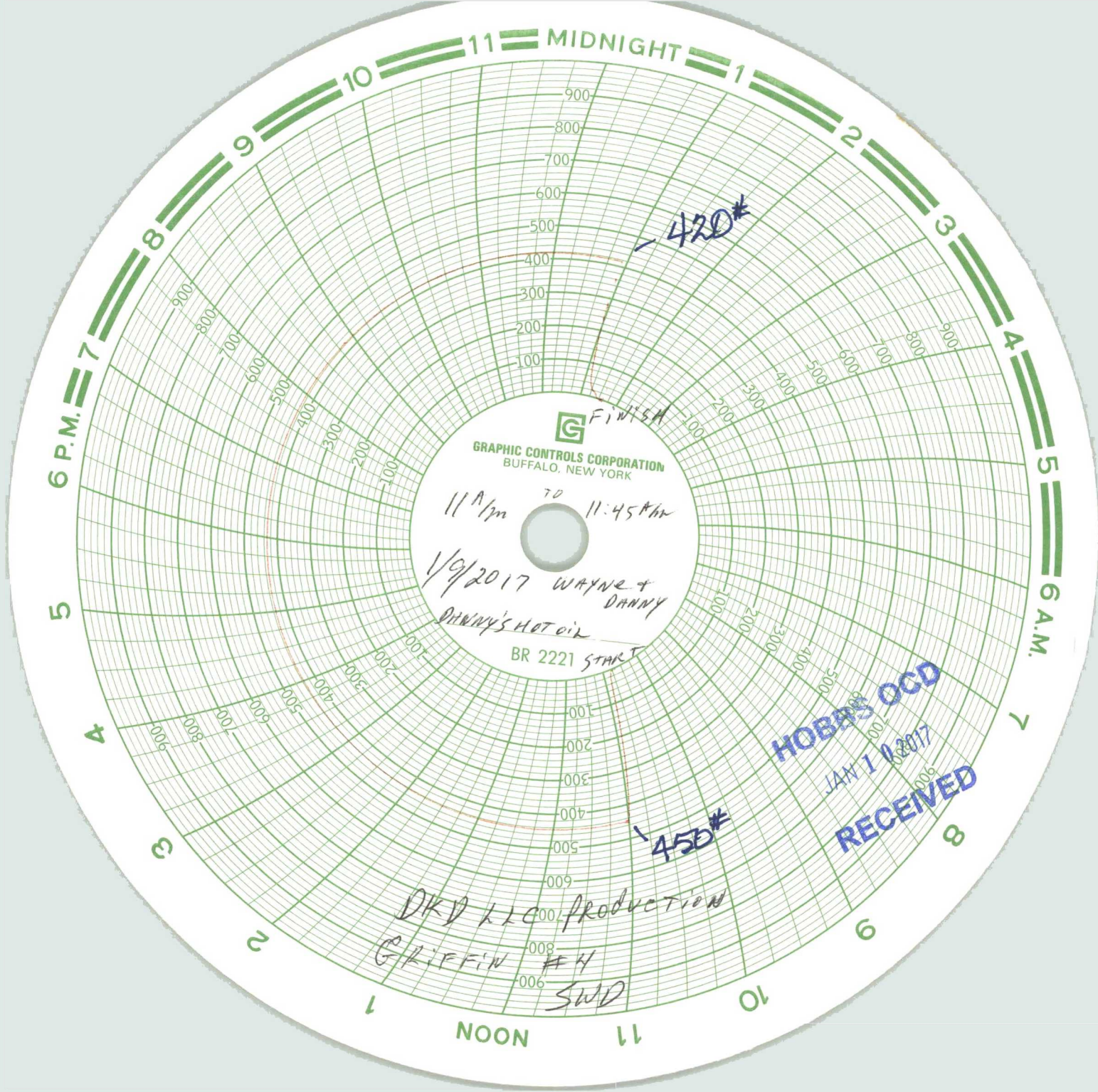
1/17/2017

Conditions of Approval (if any):

** PACKER WAS SET @ 4064' IN 2001*

RBDMS-CHART-✓

mb



FINISH

GRAPHIC CONTROLS CORPORATION
BUFFALO, NEW YORK

11 A.M. TO 11:45 A.M.

1/9/2017 WAYNE & DANNY
DANNY'S HOT OIL

BR 2221 START

DKD LLC Production
GRIFFIN #4
SWD

HOBAS OCD

JAN 10 2017

RECEIVED

American Valve & Meter, Inc.

1113 W. BROADWAY

P.O. BOX 166 HOBBS,
NM 88240

T0: Danny's Hot Oil

DATE:09/08/16

This is to certify that:

I, Tony Flores, Technician for American Valve & Meter Inc. has checked the calibration of the following instrument.


8 " Pressure recorder

Ser# 9945

at these points.

Pressure #			* Pressure #		
Test	Found	4 Left	Test	Found	Left
- 0	-	- 0	-	-	-
- 500	- S	- 500	-	-	-
- 700	- A	- 700	-	-	-
- 1000	- M	- 1000	-	-	-
- 200	- E	- 200	-	-	-
- 0	-	- 0	-	-	-

Remarks: _____

Signature:  _____

HOBBS OCD

JAN 10 2017

RECEIVED

III.

INJECTION WELL DATA SHEET

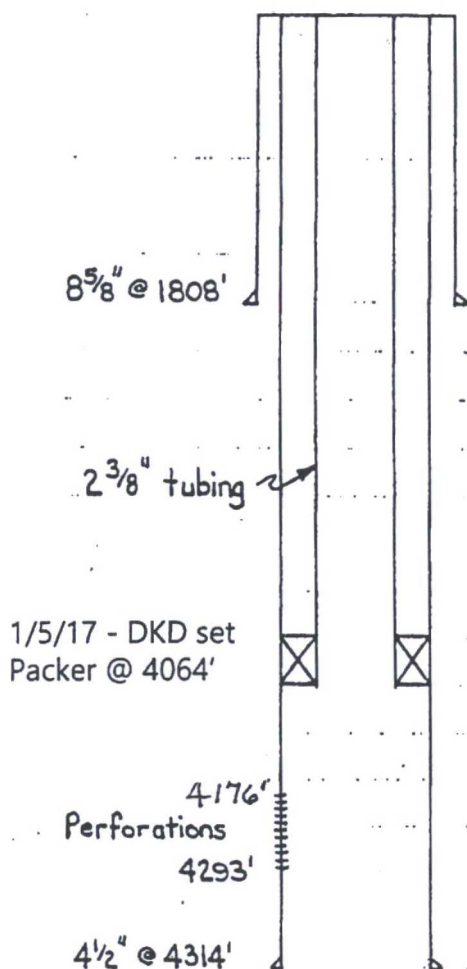
DKD, LLC - Griffin #004 SWD

API 30-005-20809

660' FNL + 660' FEL, Section 10, T-8-S, R-32-E

Chaves County, New Mexico

Schematic



Tubular Data

Surface Casing

8 5/8", 24 #, K-55, ST+C. Set at 1808'.

Cemented with 550 sx. Lightweight followed by 200 sx. Class "C".

Cement circulated to surface.

Hole size 12 1/4".

Long String

4 1/2", 10.5 #, K-55, ST+C. Set at 4314'.

Cemented with 300 sx. 50:50 Pozmix.

Top of cement is 2500' determined by calculation.

Hole size 7 7/8".

Total Depth 4315'.

Injection interval through perforations 4176' - 4293' (24 holes)

Tubing size is 2 3/8" which will be lined with a powered epoxy coating (Tuboscope TK-75 coating).
Tubing will be set in a Baker AD-1 tension packer.