

HOBBS OCD

JAN 18 2017

## District I

1625 N. French Dr., Hobbs, NM 88240  
Phone: (575) 393-6161 Fax: (575) 393-0720

## District II

811 S. First St., Artesia, NM 88210  
Phone: (575) 748-1283 Fax: (575) 748-9720

## District III

1000 Rio Brazos Road, Aztec, NM 87410  
Phone: (505) 334-6178 Fax: (505) 334-6170

## District IV

1220 S. St. Francis Dr., Santa Fe, NM 87505  
Phone: (505) 476-3460 Fax: (505) 476-3462State of New Mexico  
Energy, Minerals & Natural Resources Department

## OIL CONSERVATION DIVISION

1220 South St. Francis Dr.

Santa Fe, NM 87505

Form C-102

Revised August 1, 2011

Submit one copy to appropriate

District Office

☐ AMENDED REPORT

## WELL LOCATION AND ACREAGE DEDICATION PLAT

<sup>1</sup> API Number <b>30-025-43442</b>	<sup>2</sup> Pool Code <b>59900</b>	<sup>3</sup> Pool Name <b>Triple X; Bone Spring</b>
<sup>4</sup> Property Code <b>30884</b>	<sup>5</sup> Property Name <b>THISTLE UNIT</b>	<sup>6</sup> Well Number <b>138H</b>
<sup>7</sup> OGRID No. <b>6137</b>	<sup>8</sup> Operator Name <b>DEVON ENERGY PRODUCTION COMPANY, L.P.</b>	<sup>9</sup> Elevation <b>3640.3</b>

<sup>10</sup> Surface Location

UL or lot no.	Section	Township	Range	Lot Idn	Feet from the	North/South line	Feet from the	East/West line	County
<b>P</b>	<b>34</b>	<b>23 S</b>	<b>33 E</b>		<b>185</b>	<b>SOUTH</b>	<b>400</b>	<b>EAST</b>	<b>LEA</b>

<sup>11</sup> Bottom Hole Location If Different From Surface

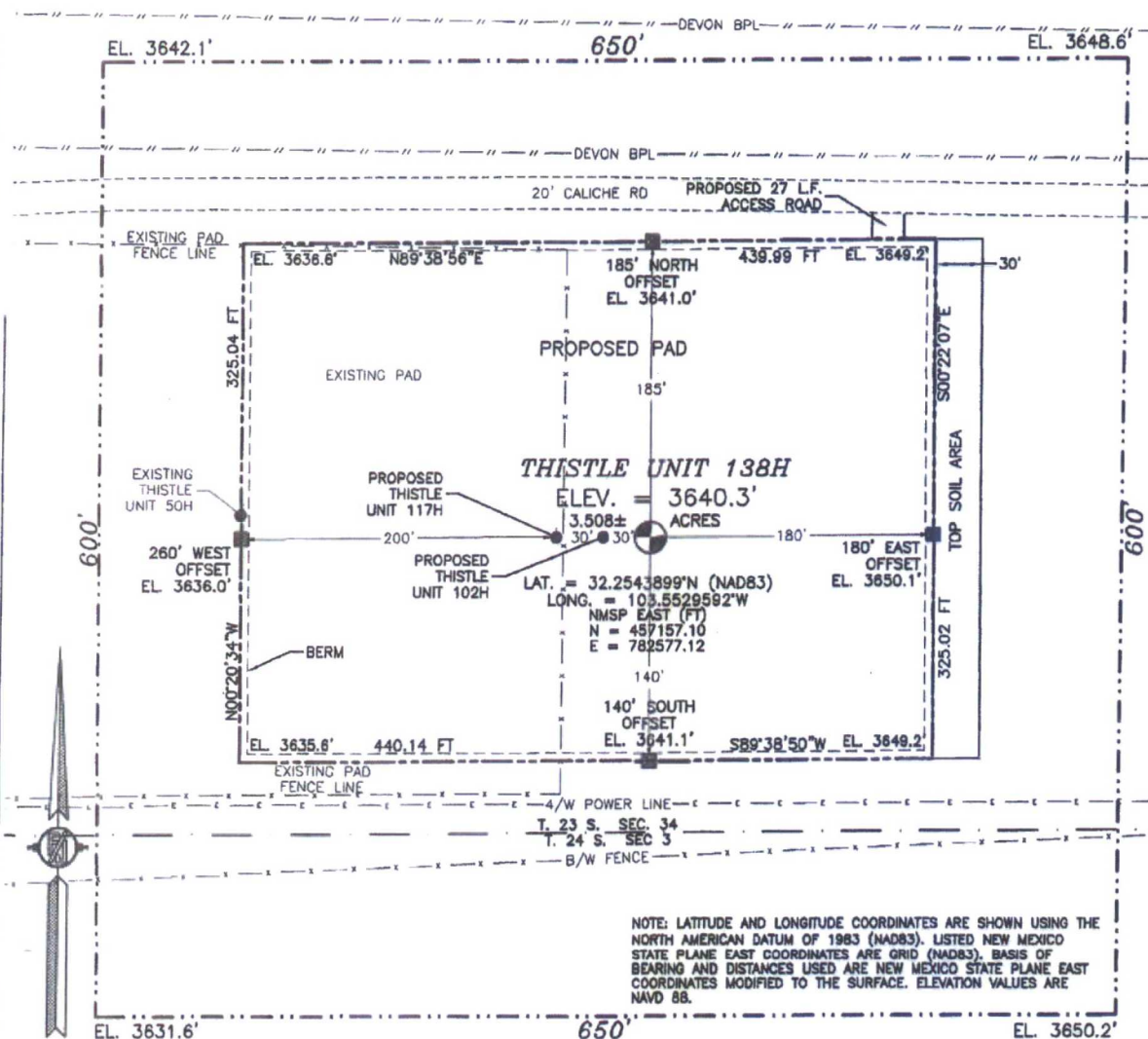
UL or lot no.	Section	Township	Range	Lot Idn	Feet from the	North/South line	Feet from the	East/West line	County
<b>I</b>	<b>27</b>	<b>23 S</b>	<b>33 E</b>		<b>2630</b>	<b>SOUTH</b>	<b>380</b>	<b>EAST</b>	<b>LEA</b>

<sup>12</sup> Dedicated Acres	<sup>13</sup> Joint or Infill	<sup>14</sup> Consolidation Code	<sup>15</sup> Order No.
<b>240</b>			

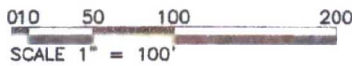
No allowable will be assigned to this completion until all interests have been consolidated or a non-standard unit has been approved by the division.

<p>NW CORNER SEC. 27 LAT. = 32.2829508°N LONG. = 103.5687577°W NMSP EAST (FT) N = 467512.36 E = 777619.12</p> <p>W/4 CORNER SEC. 27 LAT. = 32.2756899°N LONG. = 103.5687542°W NMSP EAST (FT) N = 464870.84 E = 777639.03</p> <p>SECTION CORNER LAT. = 32.2684420°N LONG. = 103.5687493°W NMSP EAST (FT) N = 462234.08 E = 777659.34</p> <p>W/4 CORNER SEC. 34 LAT. = 32.2611700°N LONG. = 103.5687420°W NMSP EAST (FT) N = 459588.56 E = 777880.44</p> <p>SW CORNER SEC. 34 LAT. = 32.2539037°N LONG. = 103.5687408°W NMSP EAST (FT) N = 456945.13 E = 777699.63</p>	<p>N/4 CORNER SEC. 27 LAT. = 32.2829394°N LONG. = 103.5682131°W NMSP EAST (FT) N = 467527.14 E = 780259.81</p> <p>BOTTOM OF HOLE LAT. = 32.2756449°N LONG. = 103.5528986°W NMSP EAST (FT) N = 464889.75 E = 782539.61</p> <p>380' BOTTOM OF HOLE 2630'</p> <p>SEC. 27 QUARTER CORNER SCALED</p>	<p>NE CORNER SEC. 27 LAT. = 32.2829270°N LONG. = 103.5516898°W NMSP EAST (FT) N = 467541.76 E = 782900.10</p> <p>E/4 CORNER SEC. 27 LAT. = 32.2757053°N LONG. = 103.5516894°W NMSP EAST (FT) N = 464914.49 E = 782919.36</p> <p>SECTION CORNER LAT. = 32.2684152°N LONG. = 103.5516675°W NMSP EAST (FT) N = 462262.37 E = 782939.28</p> <p>E/4 CORNER SEC. 34 SCALED</p>	<p><b><sup>17</sup> OPERATOR CERTIFICATION</b></p> <p>I hereby certify that the information contained herein is true and complete to the best of my knowledge and belief, and that this organization either owns a working interest or unleased mineral interest in the land including the proposed bottom hole location or has a right to drill this well at this location pursuant to a contract with an owner of such a mineral or working interest, or to a voluntary pooling agreement or a compulsory pooling order heretofore entered by the division.</p> <p><i>Rebecca Deal</i> 1/12/2017 Signature Date</p> <p><b>Rebecca Deal, Regulatory Analyst</b> Printed Name</p> <p><b>rebecca.deal@dvn.com</b> E-mail Address</p>
<p>NOTE: LATITUDE AND LONGITUDE COORDINATES ARE SHOWN USING THE NORTH AMERICAN DATUM OF 1983 (NAD83). LISTED NEW MEXICO STATE PLANE EAST COORDINATES ARE GRID (NAD83). BASIS OF BEARING AND DISTANCES USED ARE NEW MEXICO STATE PLANE EAST COORDINATES MODIFIED TO THE SURFACE. ELEVATION VALUES ARE NAVD 88.</p>	<p>SEC. 34</p> <p>THISTLE UNIT 138H ELEV. = 3640.3' LAT. = 32.2543899°N (NAD83) LONG. = 103.5529592°W NMSP EAST (FT) N = 457157.10 E = 782577.12</p> <p>180' SURFACE LOCATION 400'</p> <p>S/4 CORNER SEC. 34 SCALED</p>	<p>SE CORNER SEC. 34 LAT. = 32.2538795°N LONG. = 103.5516653°W NMSP EAST (FT) N = 456974.34 E = 782978.47</p>	<p><b><sup>18</sup> SURVEYOR CERTIFICATION</b></p> <p>I hereby certify that the well location shown on this plat was plotted from field notes of actual surveys made by me or under my supervision, and that the same is true and correct to the best of my belief.</p> <p>DECEMBER 2, 2016 Date of Survey</p> <p><i>Hermon F. Jaramillo</i> Signature and Seal of Professional Surveyor</p> <p>Certificate Number: HERMON F. JARAMILLO, PLS 12797 SURVEY NO. 4707A</p>

SECTION 34, TOWNSHIP 23 SOUTH, RANGE 33 EAST, N.M.P.M.  
LEA COUNTY, STATE OF NEW MEXICO  
SITE MAP



NOTE: LATITUDE AND LONGITUDE COORDINATES ARE SHOWN USING THE NORTH AMERICAN DATUM OF 1983 (NAD83). LISTED NEW MEXICO STATE PLANE EAST COORDINATES ARE GRID (NAD83). BASIS OF BEARING AND DISTANCES USED ARE NEW MEXICO STATE PLANE EAST COORDINATES MODIFIED TO THE SURFACE. ELEVATION VALUES ARE NAVD 88.



**DIRECTIONS TO LOCATION**  
FROM STATE HWY. 128 AND CR. J2 (BRINNSTOOL) GO NORTH ON J2 3.1 MILES, TURN RIGHT ON CALICHE ROAD AND GO EAST 0.45 MILE, BEND LEFT AND GO NORTH 0.1 MILE, BEND RIGHT AND GO SOUTHEAST 0.4 MILE, BEND LEFT AND GO EAST 0.21 MILE TO A PROPOSED ROAD SURVEY AND FOLLOW FLAGS SOUTH 27' TO THE NORTHEAST CORNER OF PAD FOR THIS LOCATION.

DEVON ENERGY PRODUCTION COMPANY, L.P.  
**THISTLE UNIT 138H**  
LOCATED 185 FT. FROM THE SOUTH LINE  
AND 400 FT. FROM THE EAST LINE OF  
SECTION 34, TOWNSHIP 23 SOUTH,  
RANGE 33 EAST, N.M.P.M.  
LEA COUNTY, STATE OF NEW MEXICO

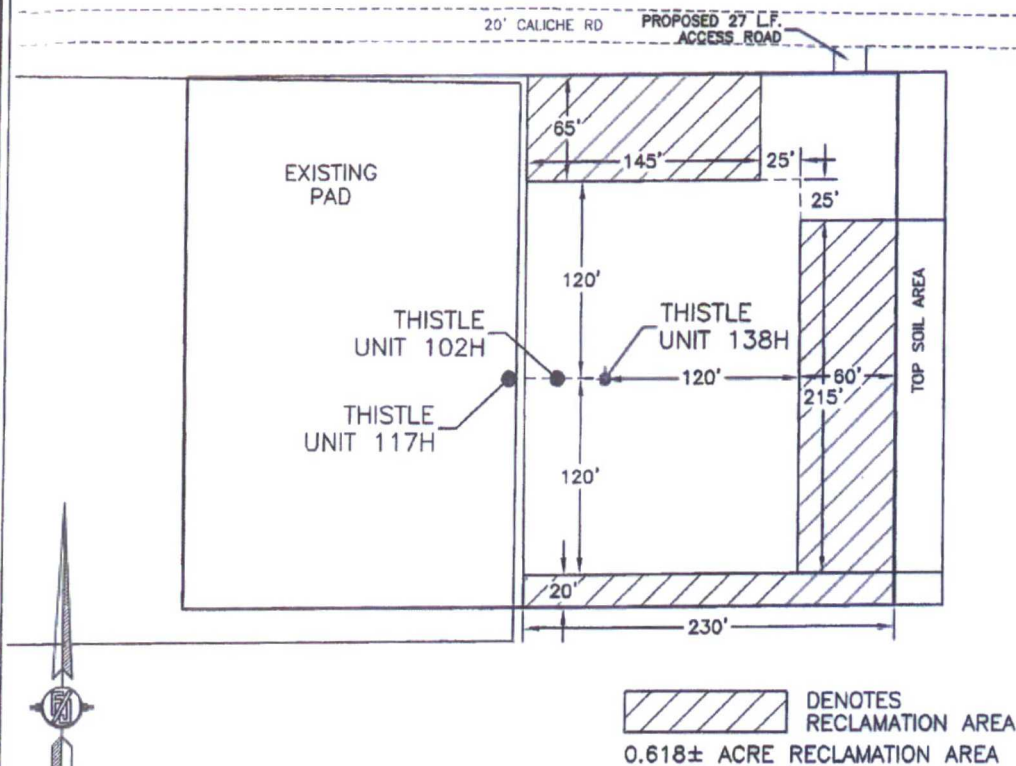
DECEMBER 2, 2016

MADRON SURVEYING, INC. 301 SOUTH CANAL (575) 234-3341 CARLSBAD, NEW MEXICO

SURVEY NO. 4707A



**PROPOSED INTERIM SITE RECLAMATION  
FOR THISTLE UNIT 138H**  
SECTION 34, TOWNSHIP 23 SOUTH, RANGE 33 EAST, N.M.P.M.  
LEA COUNTY, STATE OF NEW MEXICO



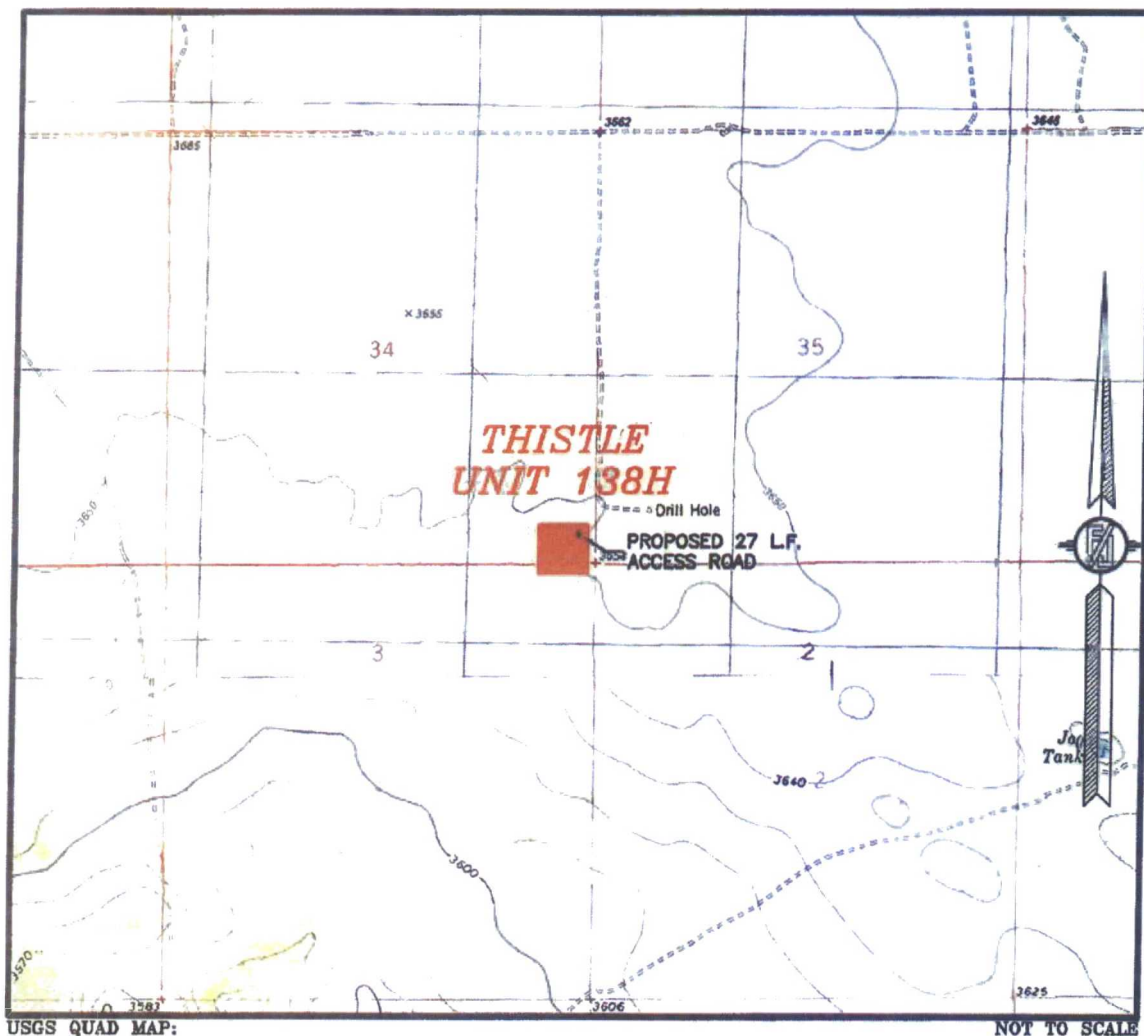
**DEVON ENERGY PRODUCTION COMPANY, L.P.**  
**THISTLE UNIT 138H**  
LOCATED 185 FT. FROM THE SOUTH LINE  
AND 400 FT. FROM THE EAST LINE OF  
SECTION 34, TOWNSHIP 23 SOUTH,  
RANGE 33 EAST, N.M.P.M.  
LEA COUNTY, STATE OF NEW MEXICO

DECEMBER 2, 2016

SURVEY NO. 4707A

MADRON SURVEYING, INC. 301 SOUTH CANAL (575) 234-3341 CARLSBAD, NEW MEXICO

SECTION 34, TOWNSHIP 23 SOUTH, RANGE 33 EAST, N.M.P.M.  
LEA COUNTY, STATE OF NEW MEXICO  
LOCATION VERIFICATION MAP



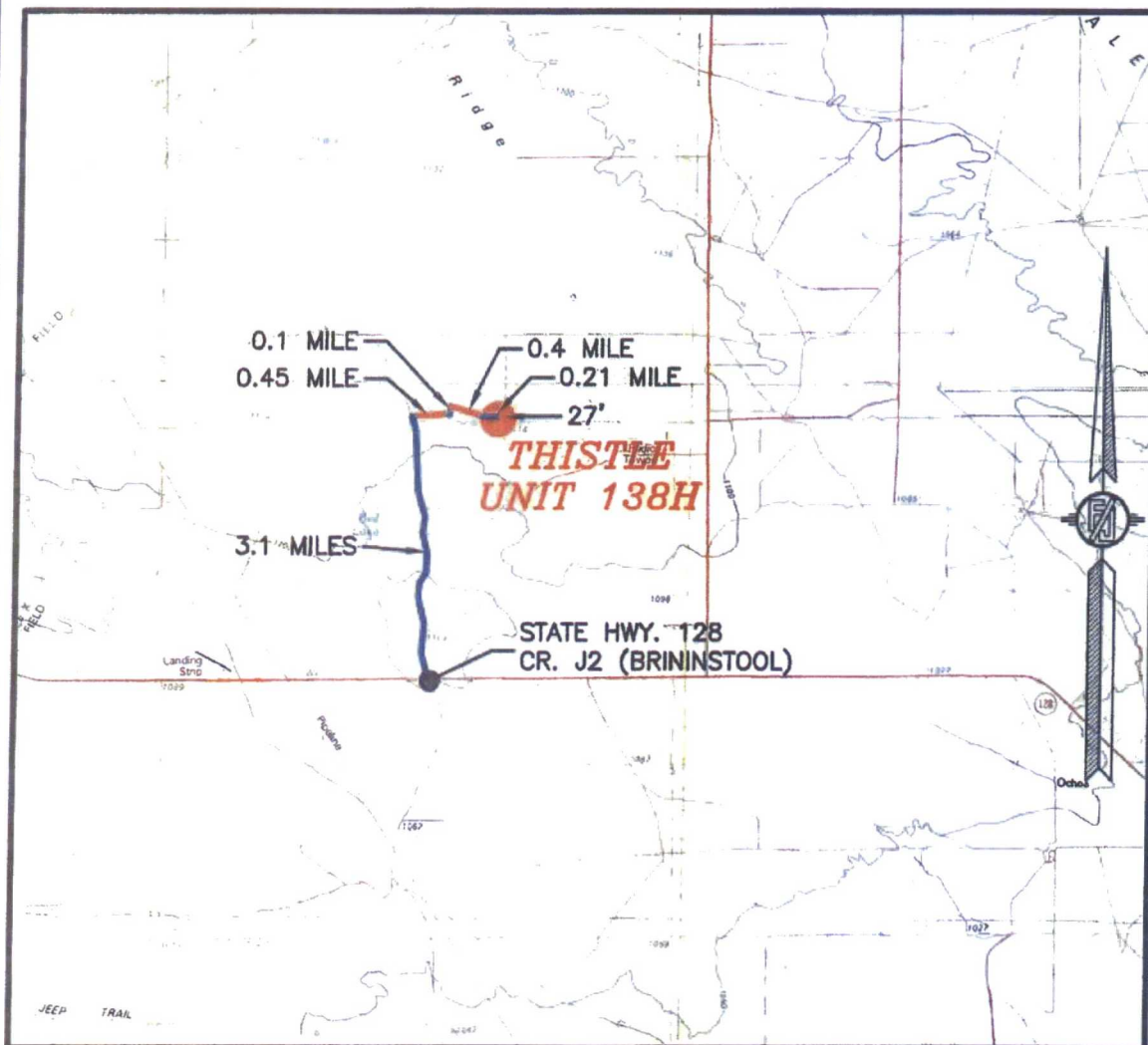
DEVON ENERGY PRODUCTION COMPANY, L.P.  
**THISTLE UNIT 138H**

LOCATED 185 FT. FROM THE SOUTH LINE  
AND 400 FT. FROM THE EAST LINE OF  
SECTION 34, TOWNSHIP 23 SOUTH,  
RANGE 33 EAST, N.M.P.M.  
LEA COUNTY, STATE OF NEW MEXICO

DECEMBER 2, 2016

MADRON SURVEYING, INC. 301 SOUTH CANAL (575) 234-3341 SURVEY NO. 4707A  
CARLSBAD, NEW MEXICO

SECTION 34, TOWNSHIP 23 SOUTH, RANGE 33 EAST, N.M.P.M.  
LEA COUNTY, STATE OF NEW MEXICO  
VICINITY MAP



DISTANCES IN MILES

NOT TO SCALE

**DIRECTIONS TO LOCATION**  
FROM STATE HWY. 128 AND CR. J2 (BRINSTOOL) GO NORTH ON J2 3.1 MILES, TURN RIGHT ON CALICHE ROAD AND GO EAST 0.45 MILE, BEND LEFT AND GO NORTH 0.1 MILE, BEND RIGHT AND GO SOUTHEAST 0.4 MILE, BEND LEFT AND GO EAST 0.21 MILE TO A PROPOSED ROAD SURVEY AND FOLLOW FLAGS SOUTH 27' TO THE NORTHEAST CORNER OF PAD FOR THIS LOCATION.

DEVON ENERGY PRODUCTION COMPANY, L.P.  
**THISTLE UNIT 138H**

LOCATED 185 FT. FROM THE SOUTH LINE  
AND 400 FT. FROM THE EAST LINE OF  
SECTION 34, TOWNSHIP 23 SOUTH,  
RANGE 33 EAST, N.M.P.M.  
LEA COUNTY, STATE OF NEW MEXICO

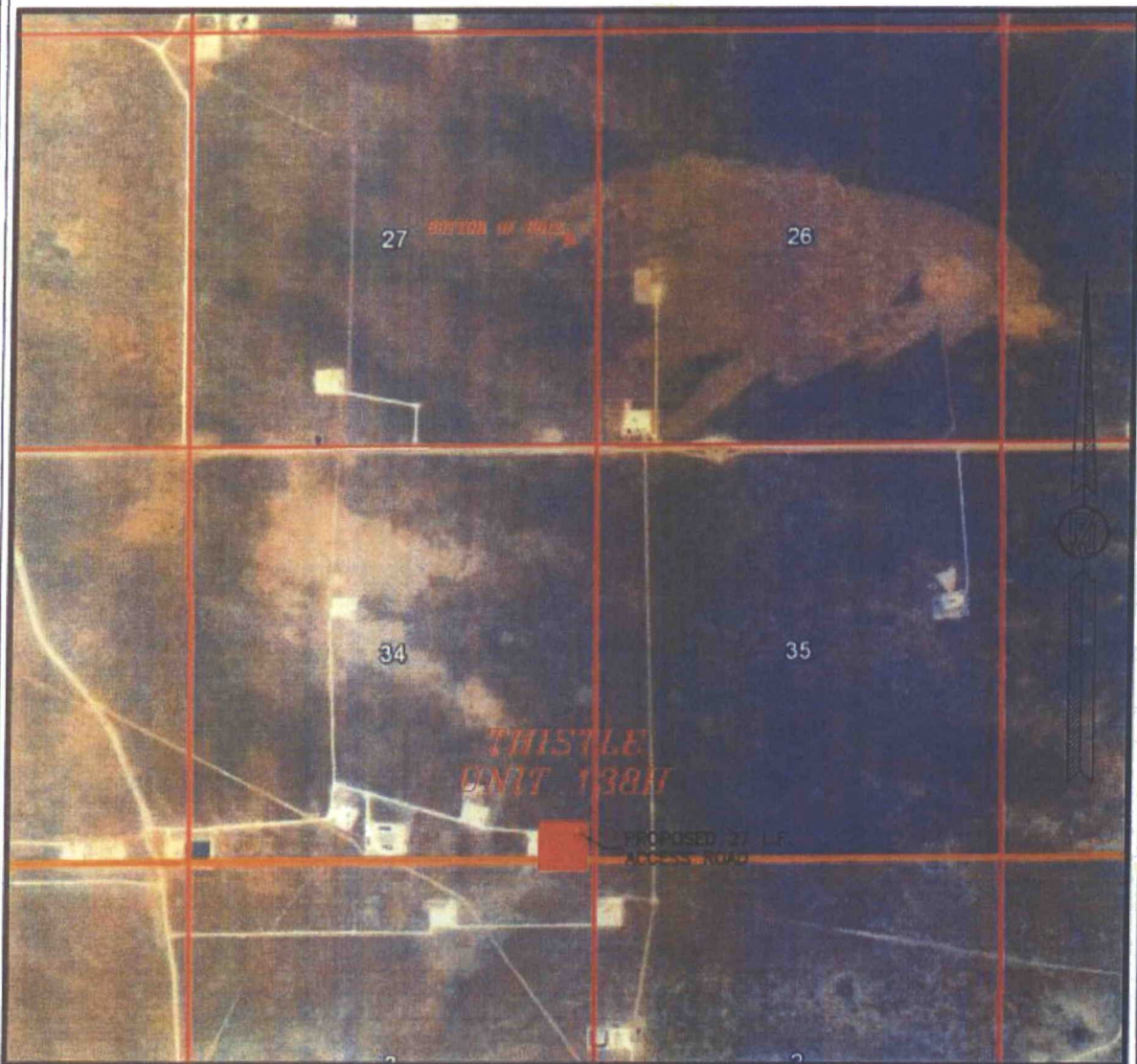
DECEMBER 2, 2016

MADRON SURVEYING, INC. 301 SOUTH CANAL (575) 234-3341 CARLSBAD, NEW MEXICO

SURVEY NO. 4707A



SECTION 34, TOWNSHIP 23 SOUTH, RANGE 33 EAST, N.M.P.M.  
LEA COUNTY, STATE OF NEW MEXICO  
AERIAL PHOTO



NOT TO SCALE  
AERIAL PHOTO:  
GOOGLE EARTH  
FEB. 2014

DEVON ENERGY PRODUCTION COMPANY, L.P.  
THISTLE UNIT 138H

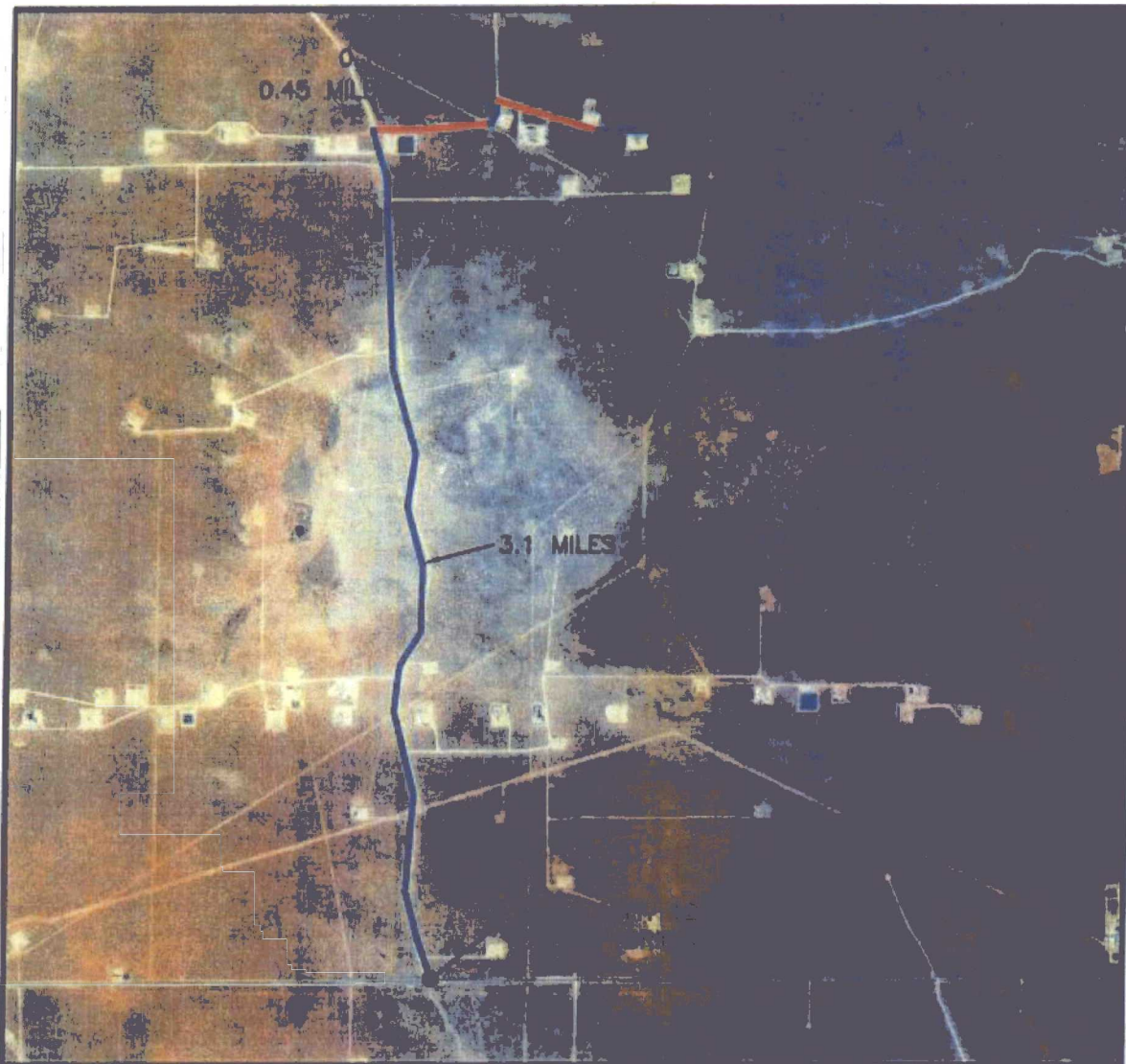
LOCATED 185 FT. FROM THE SOUTH LINE  
AND 400 FT. FROM THE EAST LINE OF  
SECTION 34, TOWNSHIP 23 SOUTH,  
RANGE 33 EAST, N.M.P.M.  
LEA COUNTY, STATE OF NEW MEXICO

DECEMBER 2, 2016

SURVEY NO. 4707A

MADRON SURVEYING, INC. 301 SOUTH CANAL CARLSBAD, NEW MEXICO  
(575) 234-3341

SECTION 34, TOWNSHIP 23 SOUTH, RANGE 33 EAST, N.M.P.M.  
LEA COUNTY, STATE OF NEW MEXICO  
AERIAL ACCESS ROUTE MAP



NOT TO SCALE  
AERIAL PHOTO:  
GOOGLE EARTH  
FEB. 2014

DEVON ENERGY PRODUCTION COMPANY, L.P.  
THISTLE UNIT 138H

LOCATED 185 FT. FROM THE SOUTH LINE  
AND 400 FT. FROM THE EAST LINE OF  
SECTION 34, TOWNSHIP 23 SOUTH,  
RANGE 33 EAST, N.M.P.M.  
LEA COUNTY, STATE OF NEW MEXICO

DECEMBER 2, 2016

SURVEY NO. 4707A

MADRON SURVEYING, INC. 301 SOUTH CANAL (575) 234-3341 CARLSBAD, NEW MEXICO