

District I
1625 N. French Dr., Hobbs, NM 88240
Phone: (575) 393-6161 Fax: (575) 393-0720
District II
811 S. First St., Artesia, NM 88210
Phone: (575) 748-1283 Fax: (575) 748-9720
District III
1000 Rio Brazos Road, Aztec, NM 87410
Phone: (505) 334-6178 Fax: (505) 334-6170
District IV
1220 S. St. Francis Dr., Santa Fe, NM 87505
Phone: (505) 476-3460 Fax: (505) 476-3462

State of New Mexico
Energy, Minerals & Natural Resources Department
OIL CONSERVATION DIVISION
1220 South St. Francis Dr.
Santa Fe, NM 87505

HOBBS OCD
NOV 07 2016
RECEIVED

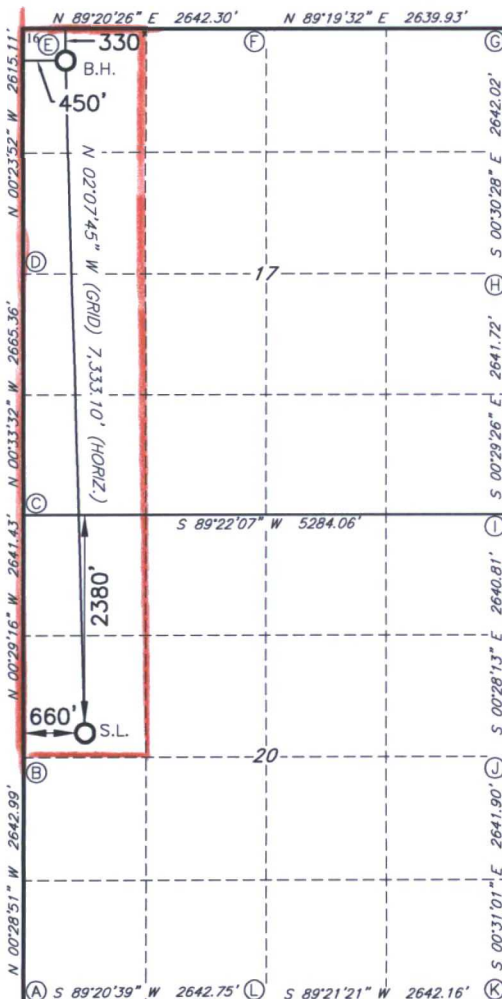
Form C-102
Revised August 1, 2011
Submit one copy to appropriate
District Office

☐ AMENDED REPORT

WELL LOCATION AND ACREAGE DEDICATION PLAT

1 API Number 30-025-43235		2 Pool Code 96660		3 Pool Name Berry, Bone Spring, South	
4 Property Code 316220		5 Property Name BIRD DOG 20/17 B2ED STATE COM			
6 Well Number 1H		7 OGRID NO. 14744			
8 Operator Name MEWBOURNE OIL COMPANY				9 Elevation 3721'	
10 Surface Location					
UL or lot no. E	Section 20	Township 21S	Range 34E	Lot Idn	Feet from the 2380
				North/South line NORTH	Feet From the 660
				East/West line WEST	County LEA
11 Bottom Hole Location If Different From Surface					
UL or lot no. D	Section 17	Township 21S	Range 34E	Lot Idn	Feet from the 444
				North/South line NORTH	Feet from the 226
				East/West line WEST	County LEA
12 Dedicated Acres 240		13 Joint or Infill		14 Consolidation Code	
				15 Order No.	

No allowable will be assigned to this completion until all interest have been consolidated or a non-standard unit has been approved by the division.



GEODETIC DATA
NAD 27 GRID - NM EAST

SURFACE LOCATION

N 533857.9 - E 757654.1

LAT: 32.46491560° N
LONG: 103.49794678° W

BOTTOM HOLE

N 541184.6 - E 757381.7

LAT: 32.48505955° N
LONG: 103.49864414° W

CORNER DATA
NAD 27 GRID - NM EAST

A: FOUND BRASS CAP "1918"
N 530946.8 - E 757018.7

B: FOUND BRASS CAP "1918"
N 533589.2 - E 756996.5

C: FOUND BRASS CAP "1918"
N 536230.1 - E 756974.0

D: FOUND 1/2" REBAR
N 538894.8 - E 756948.0

E: FOUND BRASS CAP "1918"
N 541509.3 - E 756929.8

F: FOUND BRASS CAP "1918"
N 541539.7 - E 759571.5

G: FOUND BRASS CAP "1918"
N 541570.8 - E 762210.7

H: FOUND BRASS CAP "1918"
N 538929.4 - E 762234.1

I: FOUND BRASS CAP "1918"
N 536288.3 - E 762256.7

J: FOUND BRASS CAP "1918"
N 533648.1 - E 762278.4

K: FOUND BRASS CAP "1918"
N 531006.8 - E 762302.2

L: FOUND BRASS CAP "1918"
N 530977.1 - E 759660.7

17 OPERATOR CERTIFICATION

I hereby certify that the information contained herein is true and complete to the best of my knowledge and belief, and that this organization either owns a working interest or unleased mineral interest in the land including the proposed bottom hole location or has a right to drill this well at this location pursuant to a contract with an owner of such a mineral or working interest, or to a voluntary pooling agreement or a compulsory pooling order heretofore entered by the division.

Signature: **Jackie Lathan** Date: **11/1/16**
Printed Name: **Jackie Lathan**

E-mail Address

18 SURVEYOR CERTIFICATION

I hereby certify that the well location shown on this plat was plotted from field notes of actual surveys made by me or under my supervision, and that the same is true and correct to the best of my belief.

4-21-2016

Date of Survey

Signature and Seal of Professional Surveyor

19680

Certificate Number

