

HOBBS OCD

JAN 18 2017

Form C-102

District I
1625 N. French Dr., Hobbs, NM 88240
Phone: (575) 393-6161 Fax: (575) 393-0720
District II
811 S. First St., Artesia, NM 88210
Phone: (575) 748-1283 Fax: (575) 748-9720
District III
1000 Rio Brazos Road, Aztec, NM 87410
Phone: (505) 334-6178 Fax: (505) 334-6170
District IV
1220 S. St. Francis Dr., Santa Fe, NM 87505
Phone: (505) 476-3460 Fax: (505) 476-3462

State of New Mexico
Energy, Minerals & Natural Resources Department
OIL CONSERVATION DIVISION
1220 South St. Francis Dr.
Santa Fe, NM 87505

Revised August 1, 2011
Submit one copy to appropriate
District Office

☐ AMENDED REPORT

WELL LOCATION AND ACREAGE DEDICATION PLAT

¹ API Number 30-026 47541	² Pool Code 59900	³ Pool Name Triple X; Bone Spring
⁴ Property Code 30884	⁵ Property Name THISTLE UNIT	⁶ Well Number 102H
⁷ OGRID No. 6137	⁸ Operator Name DEVON ENERGY PRODUCTION COMPANY, L.P.	⁹ Elevation 3637.8

¹⁰ Surface Location

UL or lot no.	Section	Township	Range	Lot Idn	Feet from the	North/South line	Feet from the	East/West line	County
P	34	23 S	33 E		185	SOUTH	430	EAST	LEA

¹¹ Bottom Hole Location If Different From Surface

UL or lot no.	Section	Township	Range	Lot Idn	Feet from the	North/South line	Feet from the	East/West line	County
A	22	23 S	33 E		330	NORTH	380	EAST	LEA

¹² Dedicated Acres	¹³ Joint or Infill	¹⁴ Consolidation Code	¹⁵ Order No.
480			

No allowable will be assigned to this completion until all interests have been consolidated or a non-standard unit has been approved by the division.

<p>NW CORNER SEC. 22 LAT. = 32.2974757°N LONG. = 103.5687592°W NMSP EAST (FT) N = 472796.48 E = 777580.98</p> <p>W/4 CORNER SEC. 22 SCALED</p> <p>SECTION CORNER LAT. = 32.2829508°N LONG. = 103.5687577°W NMSP EAST (FT) N = 467512.36 E = 777619.12</p> <p>W/4 CORNER SEC. 27 LAT. = 32.2756899°N LONG. = 103.5687542°W NMSP EAST (FT) N = 464670.84 E = 777639.03</p> <p>SECTION CORNER LAT. = 32.2684420°N LONG. = 103.5687493°W NMSP EAST (FT) N = 462234.08 E = 777659.34</p> <p>W/4 CORNER SEC. 34 LAT. = 32.2611700°N LONG. = 103.5687420°W NMSP EAST (FT) N = 459588.56 E = 777680.44</p> <p>SW CORNER SEC. 34 LAT. = 32.2539037°N LONG. = 103.5687408°W NMSP EAST (FT) N = 456945.13 E = 777699.63</p>		<p>N/4 CORNER SEC. 22 LAT. = 32.2974646°N LONG. = 103.5602208°W NMSP EAST (FT) N = 472811.37 E = 780219.33</p> <p>SECTION CORNER LAT. = 32.2829394°N LONG. = 103.5602131°W NMSP EAST (FT) N = 467527.14 E = 780259.81</p> <p>NOTE: LATITUDE AND LONGITUDE COORDINATES ARE SHOWN USING THE NORTH AMERICAN DATUM OF 1983 (NAD83). LISTED NEW MEXICO STATE PLANE EAST COORDINATES ARE GRID (NAD83). BASIS OF BEARING AND DISTANCES USED ARE NEW MEXICO STATE PLANE EAST COORDINATES MODIFIED TO THE SURFACE. ELEVATION VALUES ARE NAVD 88.</p> <p>SECTION CORNER LAT. = 32.2684152°N LONG. = 103.5516675°W NMSP EAST (FT) N = 462262.37 E = 782939.28</p> <p>SE CORNER SEC. 34 LAT. = 32.2538795°N LONG. = 103.5516653°W NMSP EAST (FT) N = 456974.34 E = 782978.47</p>		<p>NE CORNER SEC. 22 LAT. = 32.2974530°N LONG. = 103.5516745°W NMSP EAST (FT) N = 472826.30 E = 782860.12</p> <p>E/4 CORNER SEC. 22 LAT. = 32.2901991°N LONG. = 103.5516779°W NMSP EAST (FT) N = 470187.30 E = 782878.31</p> <p>SECTION CORNER LAT. = 32.2829270°N LONG. = 103.5516698°W NMSP EAST (FT) N = 467541.76 E = 782900.10</p> <p>E/4 CORNER SEC. 27 LAT. = 32.2757053°N LONG. = 103.5516694°W NMSP EAST (FT) N = 464914.49 E = 782919.36</p>	
--	--	--	--	--	--

380'
OF HOLE
BOTTOM OF HOLE
330'

450'
SURFACE LOCATION

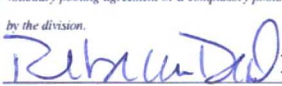
SEC. 22

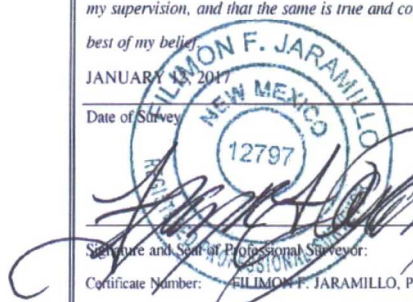
SEC. 27

SEC. 34

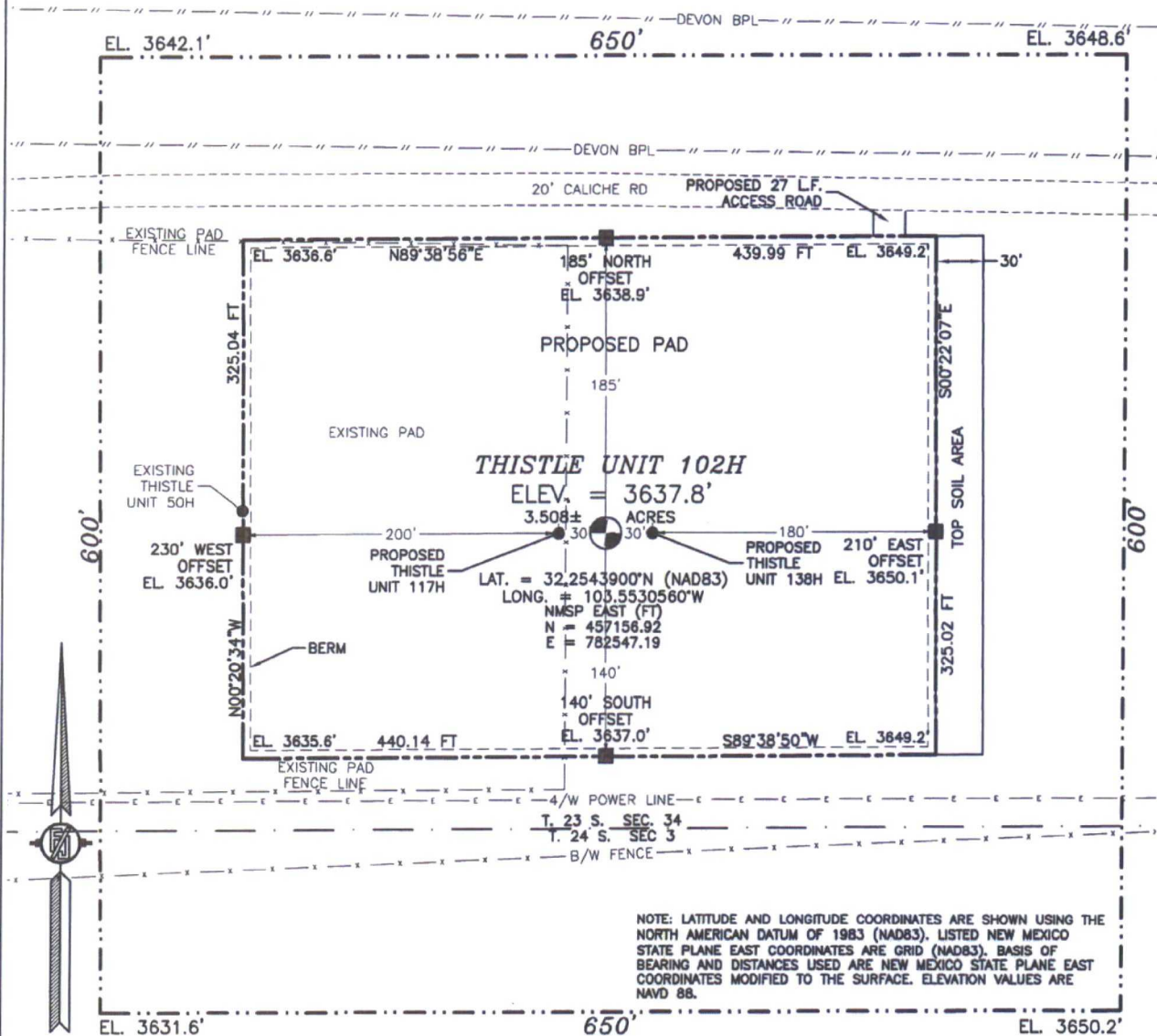
THISTLE UNIT 102H
ELEV. = 3637.8'
LAT. = 32.2543900°N (NAD83)
LONG. = 103.5530560°W
NMSP EAST (FT)
N = 457156.32
E = 782547.19

S/4 CORNER SEC. 34
SCALED

¹⁷ OPERATOR CERTIFICATION
I hereby certify that the information contained herein is true and complete to the best of my knowledge and belief, and that this organization either owns a working interest or unleased mineral interest in the land including the proposed bottom hole location or has a right to drill this well at this location pursuant to a contract with an owner of such a mineral or working interest, or to a voluntary pooling agreement or a compulsory pooling order heretofore entered by the division.

Signature Date
Rebecca Deal, Regulatory Analyst
Printed Name
rebecca.deal@dvn.com
E-mail Address

¹⁸ SURVEYOR CERTIFICATION
I hereby certify that the well location shown on this plat was plotted from field notes of actual surveys made by me or under my supervision, and that the same is true and correct to the best of my belief.
JANUARY 18, 2017
Date of Survey

Signature and Seal of Professional Surveyor:
Certificate Number: **FILMON F. JARAMILLO, PLS 12797**
SURVEY NO. 4713C

SECTION 34, TOWNSHIP 23 SOUTH, RANGE 33 EAST, N.M.P.M.
LEA COUNTY, STATE OF NEW MEXICO
SITE MAP



NOTE: LATITUDE AND LONGITUDE COORDINATES ARE SHOWN USING THE NORTH AMERICAN DATUM OF 1983 (NAD83). LISTED NEW MEXICO STATE PLANE EAST COORDINATES ARE GRID (NAD83). BASIS OF BEARING AND DISTANCES USED ARE NEW MEXICO STATE PLANE EAST COORDINATES MODIFIED TO THE SURFACE. ELEVATION VALUES ARE NAVD 88.

010 50 100 200
SCALE 1" = 100'

DIRECTIONS TO LOCATION

FROM STATE HWY. 128 AND CR. J2 (BRININSTOOL) GO NORTH ON J2 3.1 MILES, TURN RIGHT ON CALICHE ROAD AND GO EAST 0.45 MILE, BEND LEFT AND GO NORTH 0.1 MILE, BEND RIGHT AND GO SOUTHEAST 0.4 MILE, BEND LEFT AND GO EAST 0.21 MILE TO A PROPOSED ROAD SURVEY AND FOLLOW FLAGS SOUTH 27' TO THE NORTHEAST CORNER OF PAD FOR THIS LOCATION.

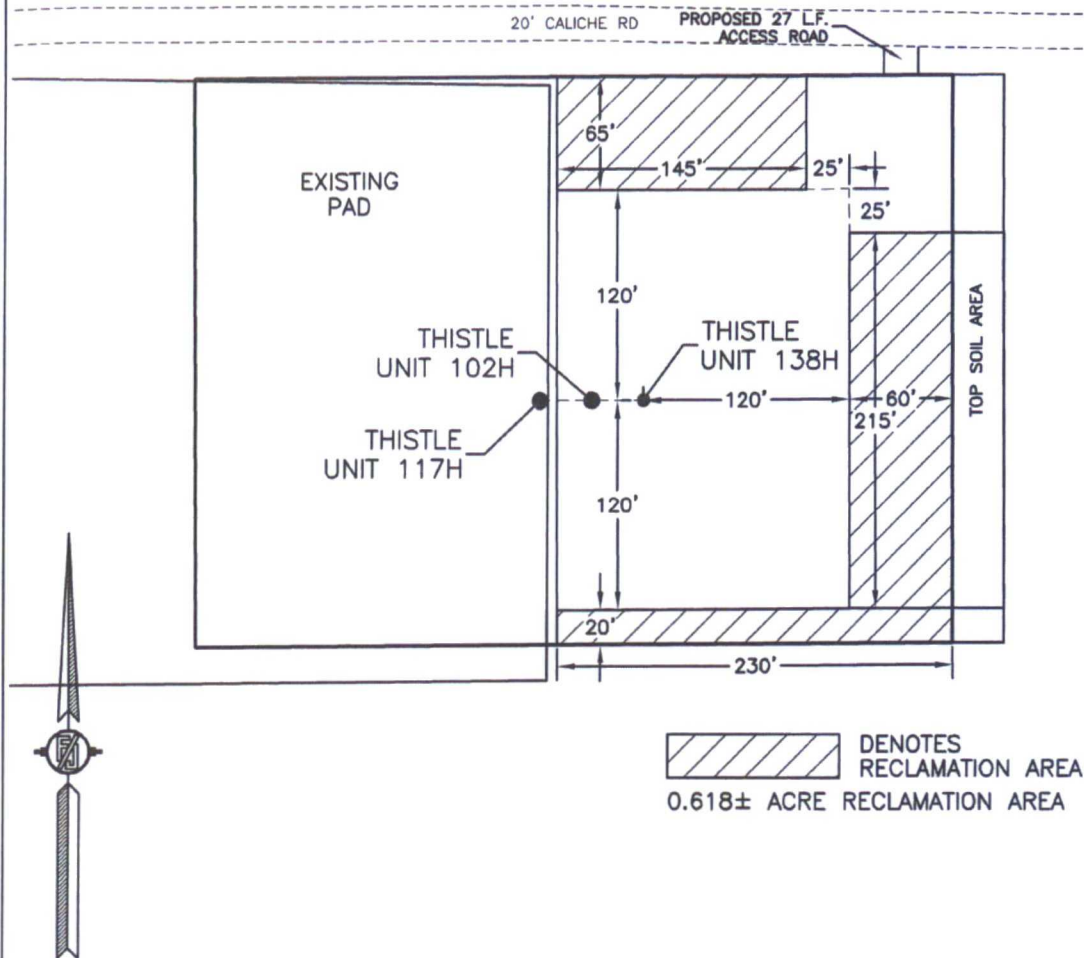
DEVON ENERGY PRODUCTION COMPANY, L.P.
THISTLE UNIT 102H
LOCATED 185 FT. FROM THE SOUTH LINE
AND 430 FT. FROM THE EAST LINE OF
SECTION 34, TOWNSHIP 23 SOUTH,
RANGE 33 EAST, N.M.P.M.
LEA COUNTY, STATE OF NEW MEXICO

JANUARY 12, 2016

SURVEY NO. 4713C

MADRON SURVEYING, INC. 301 SOUTH CANAL (575) 234-3341 CARLSBAD, NEW MEXICO

**PROPOSED INTERIM SITE RECLAMATION
FOR THISTLE UNIT 102H**
SECTION 34, TOWNSHIP 23 SOUTH, RANGE 33 EAST, N.M.P.M.
LEA COUNTY, STATE OF NEW MEXICO



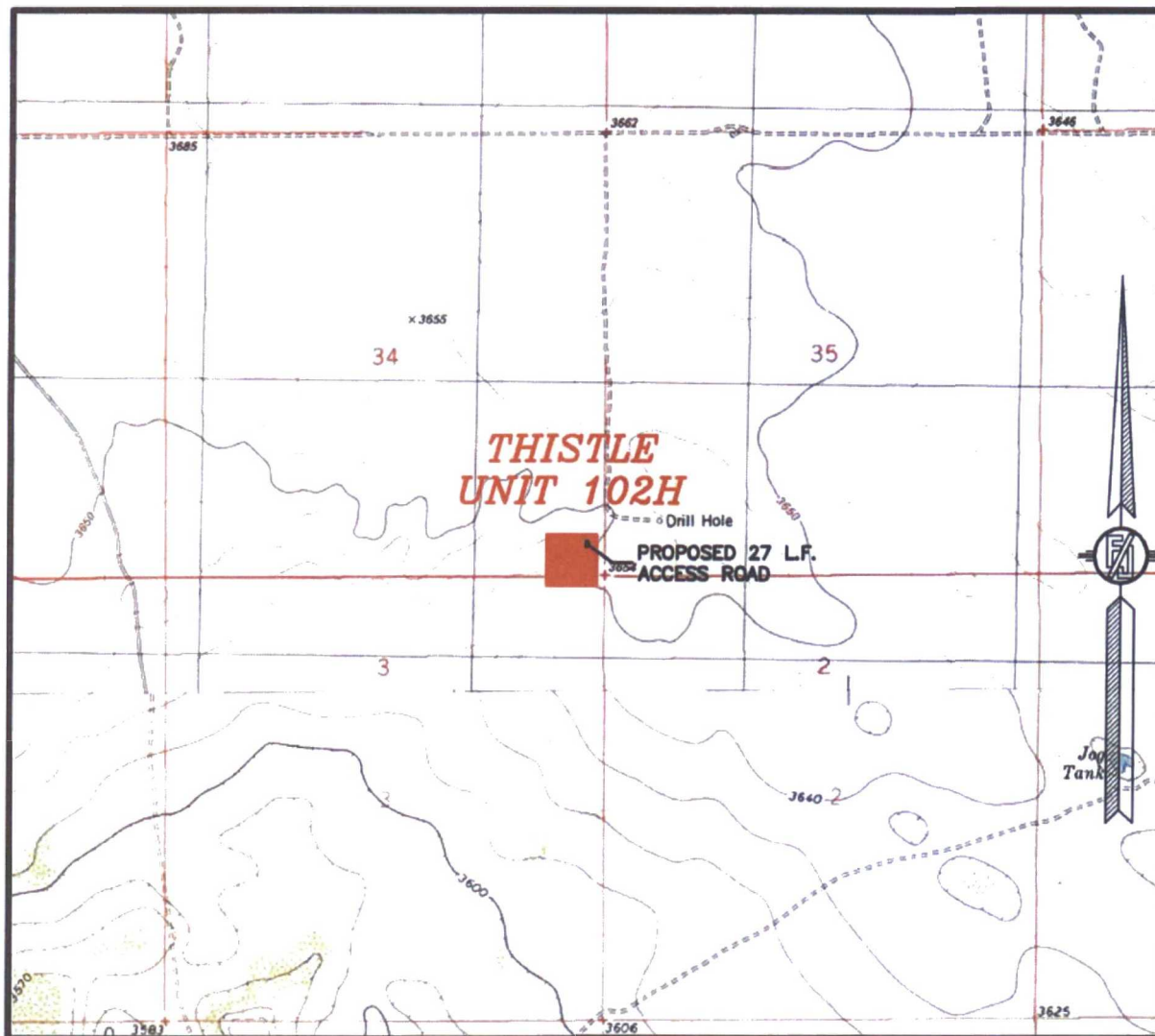
DEVON ENERGY PRODUCTION COMPANY, L.P.
THISTLE UNIT 102H
LOCATED 185 FT. FROM THE SOUTH LINE
AND 430 FT. FROM THE EAST LINE OF
SECTION 34, TOWNSHIP 23 SOUTH,
RANGE 33 EAST, N.M.P.M.
LEA COUNTY, STATE OF NEW MEXICO

JANUARY 12, 2016

SURVEY NO. 4713C

MADRON SURVEYING, INC. 301 SOUTH CANAL (575) 234-3341 CARLSBAD, NEW MEXICO

SECTION 34, TOWNSHIP 23 SOUTH, RANGE 33 EAST, N.M.P.M.
LEA COUNTY, STATE OF NEW MEXICO
LOCATION VERIFICATION MAP



USGS QUAD MAP:
TIP TOP WELLS

NOT TO SCALE

DEVON ENERGY PRODUCTION COMPANY, L.P.
THISTLE UNIT 102H

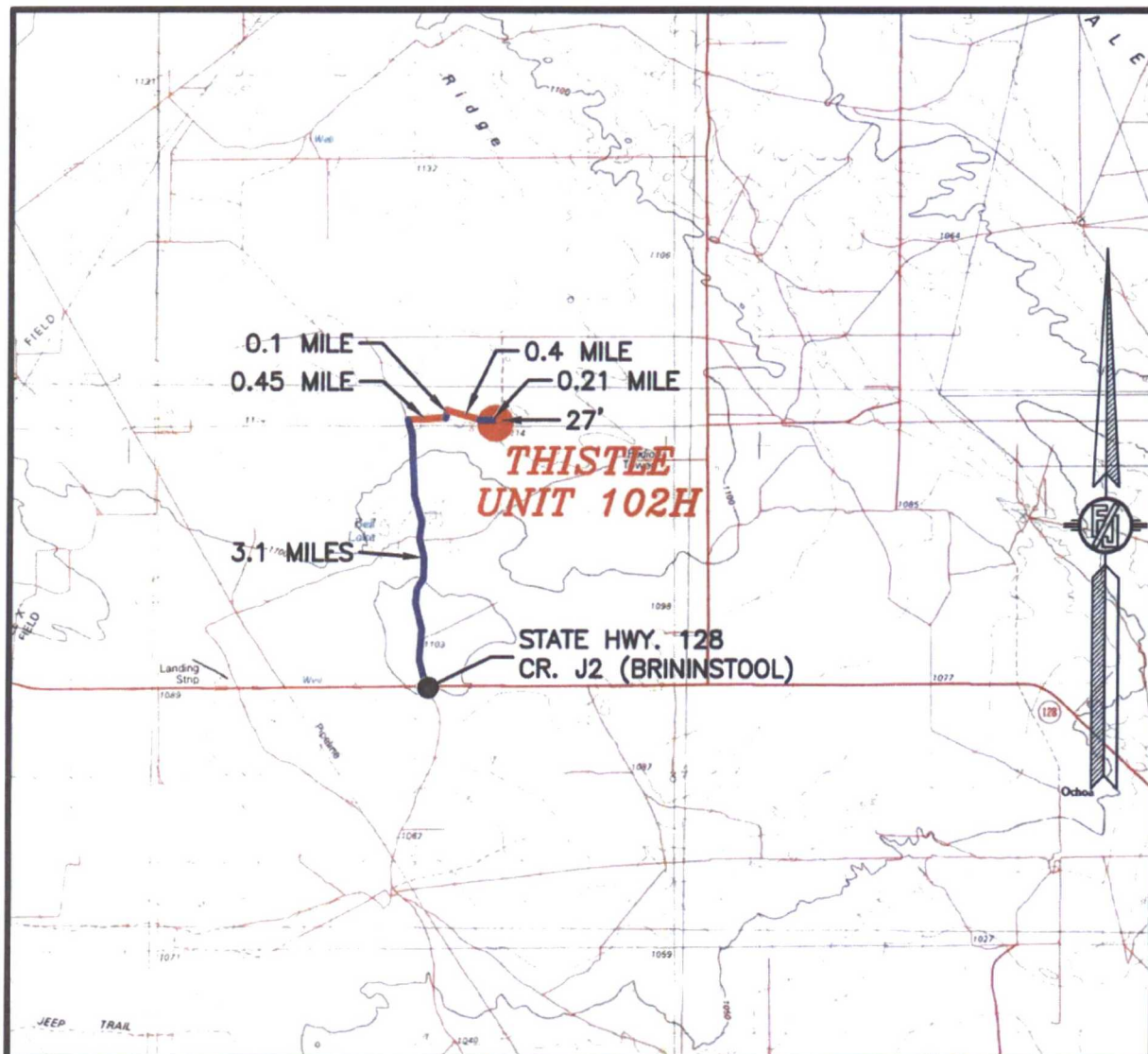
LOCATED 185 FT. FROM THE SOUTH LINE
AND 430 FT. FROM THE EAST LINE OF
SECTION 34, TOWNSHIP 23 SOUTH,
RANGE 33 EAST, N.M.P.M.
LEA COUNTY, STATE OF NEW MEXICO

JANUARY 12, 2016

MADRON SURVEYING, INC. 301 SOUTH CANAL (575) 234-3341 CARLSBAD, NEW MEXICO

SURVEY NO. 4713C

SECTION 34, TOWNSHIP 23 SOUTH, RANGE 33 EAST, N.M.P.M.
LEA COUNTY, STATE OF NEW MEXICO
VICINITY MAP



DISTANCES IN MILES

NOT TO SCALE

DIRECTIONS TO LOCATION

FROM STATE HWY. 128 AND CR. J2 (BRINSTOOL) GO NORTH ON J2 3.1 MILES, TURN RIGHT ON CALICHE ROAD AND GO EAST 0.45 MILE, BEND LEFT AND GO NORTH 0.1 MILE, BEND RIGHT AND GO SOUTHEAST 0.4 MILE, BEND LEFT AND GO EAST 0.21 MILE TO A PROPOSED ROAD SURVEY AND FOLLOW FLAGS SOUTH 27' TO THE NORTHEAST CORNER OF PAD FOR THIS LOCATION.

DEVON ENERGY PRODUCTION COMPANY, L.P.
THISTLE UNIT 102H

LOCATED 185 FT. FROM THE SOUTH LINE
AND 430 FT. FROM THE EAST LINE OF
SECTION 34, TOWNSHIP 23 SOUTH,
RANGE 33 EAST, N.M.P.M.
LEA COUNTY, STATE OF NEW MEXICO

JANUARY 12, 2016

MADRON SURVEYING, INC. 301 SOUTH CANAL (575) 234-3341

SURVEY NO. 4713C
CARLSBAD, NEW MEXICO

SECTION 34, TOWNSHIP 23 SOUTH, RANGE 33 EAST, N.M.P.M.
LEA COUNTY, STATE OF NEW MEXICO
AERIAL PHOTO



NOT TO SCALE
AERIAL PHOTO:
GOOGLE EARTH
FEB. 2014

DEVON ENERGY PRODUCTION COMPANY, L.P.
THISTLE UNIT 102H

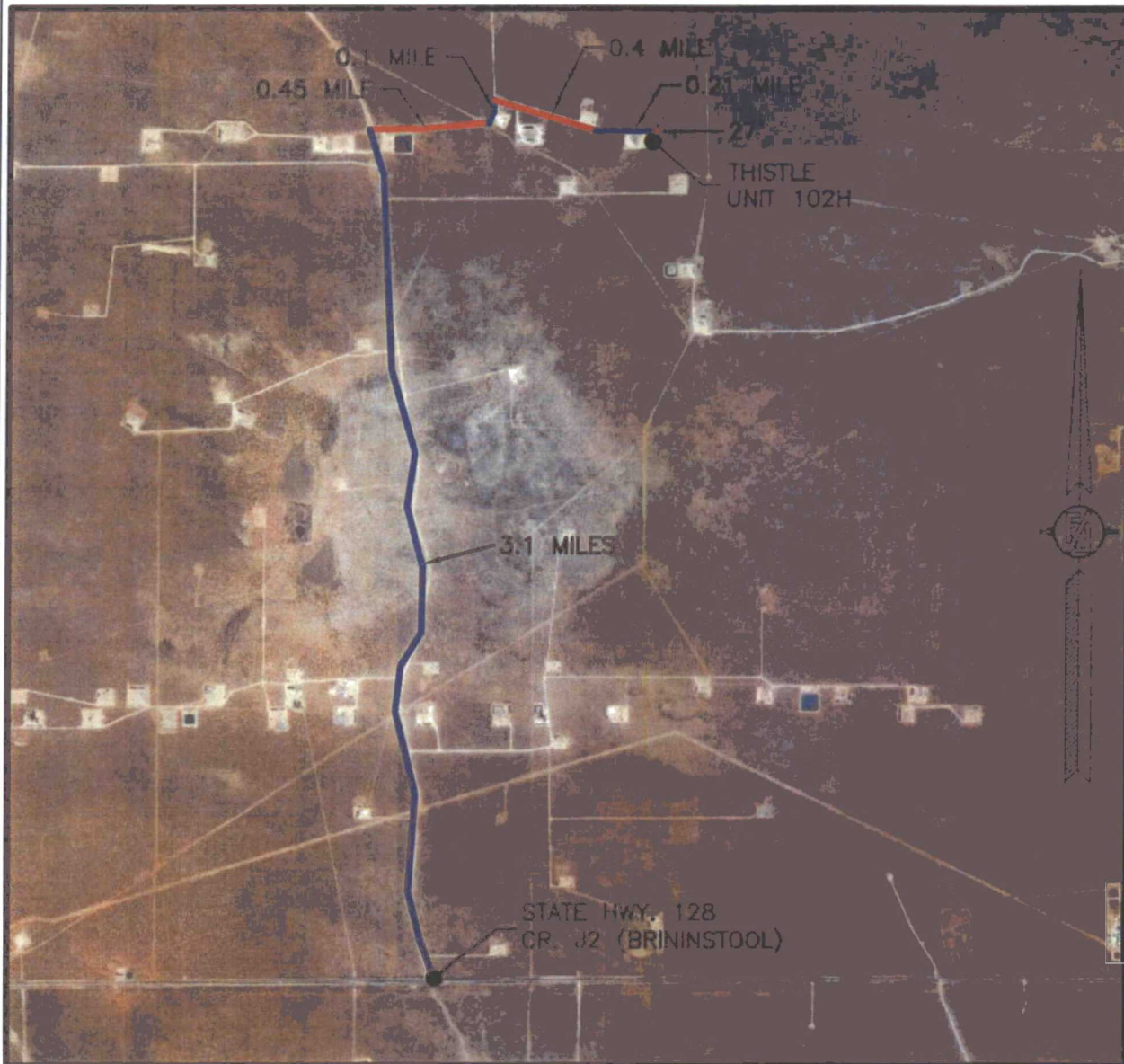
LOCATED 185 FT. FROM THE SOUTH LINE
AND 430 FT. FROM THE EAST LINE OF
SECTION 34, TOWNSHIP 23 SOUTH,
RANGE 33 EAST, N.M.P.M.
LEA COUNTY, STATE OF NEW MEXICO

JANUARY 12, 2016

SURVEY NO. 4713C

MADRON SURVEYING, INC. 301 SOUTH CANAL (575) 234-3341 CARLSBAD, NEW MEXICO

SECTION 34, TOWNSHIP 23 SOUTH, RANGE 33 EAST, N.M.P.M.
LEA COUNTY, STATE OF NEW MEXICO
AERIAL ACCESS ROUTE MAP



NOT TO SCALE
AERIAL PHOTO:
GOOGLE EARTH
FEB. 2014

**DEVON ENERGY PRODUCTION COMPANY, L.P.
THISTLE UNIT 102H**

LOCATED 185 FT. FROM THE SOUTH LINE
AND 430 FT. FROM THE EAST LINE OF
SECTION 34, TOWNSHIP 23 SOUTH,
RANGE 33 EAST, N.M.P.M.
LEA COUNTY, STATE OF NEW MEXICO

JANUARY 12, 2016

SURVEY NO. 4713C

MADRON SURVEYING, INC. 301 SOUTH CANAL (575) 234-3341 CARLSBAD, NEW MEXICO