

JAN 18 2017

Form C-102

District I
1625 N. French Dr., Hobbs, NM 88240
Phone: (575) 393-6161 Fax: (575) 393-0720
District II
811 S. First St., Artesia, NM 88210
Phone: (575) 748-1283 Fax: (575) 748-9720
District III
1000 Rio Brazos Road, Aztec, NM 87410
Phone: (505) 334-6178 Fax: (505) 334-6170
District IV
1220 S. St. Francis Dr., Santa Fe, NM 87505
Phone: (505) 476-3460 Fax: (505) 476-3462

State of New Mexico
Energy, Minerals & Natural Resources Department
OIL CONSERVATION DIVISION
1220 South St. Francis Dr.
Santa Fe, NM 87505

RECEIVED

Revised August 1, 2011
Submit one copy to appropriate
District Office

☐ AMENDED REPORT

WELL LOCATION AND ACREAGE DEDICATION PLAT

¹ API Number 70-026-43548		² Pool Code 59900	³ Pool Name Triple X; Bone Spring
⁴ Property Code 30884	⁵ Property Name THISTLE UNIT		⁶ Well Number 117H
⁷ OGRID No. 6137	⁸ Operator Name DEVON ENERGY PRODUCTION COMPANY, L.P.		⁹ Elevation 3637.8

¹⁰ Surface Location

UL or lot no.	Section	Township	Range	Lot Idn	Feet from the	North/South line	Feet from the	East/West line	County
P	34	23 S	33 E		185	SOUTH	460	EAST	LEA

¹¹ Bottom Hole Location If Different From Surface

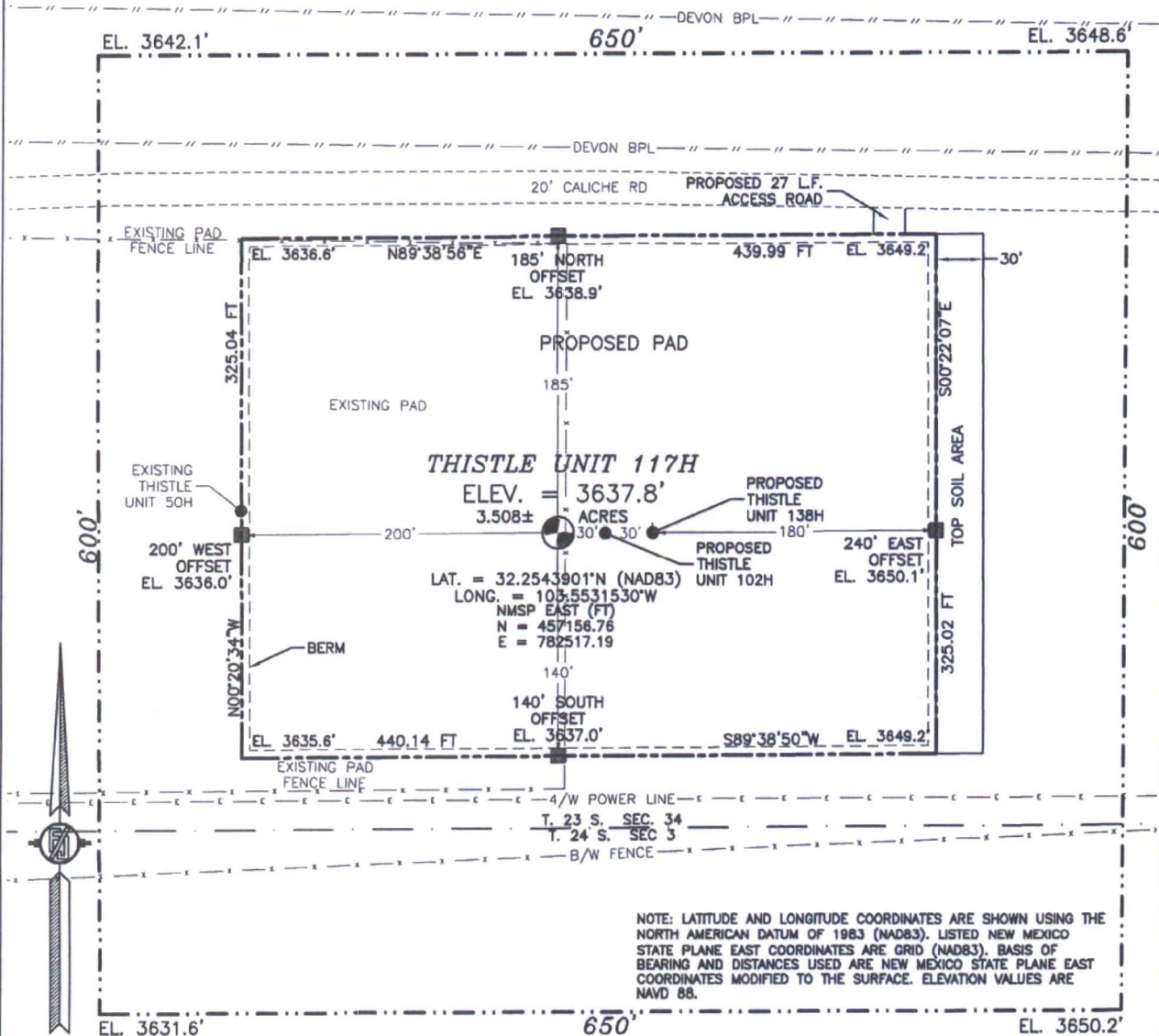
UL or lot no.	Section	Township	Range	Lot Idn	Feet from the	North/South line	Feet from the	East/West line	County
I	27	23 S	33 E		2630	SOUTH	1122	EAST	LEA

¹² Dedicated Acres 240	¹³ Joint or Infill	¹⁴ Consolidation Code	¹⁵ Order No.
---	-------------------------------	----------------------------------	-------------------------

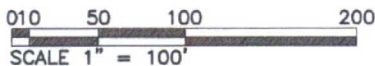
No allowable will be assigned to this completion until all interests have been consolidated or a non-standard unit has been approved by the division.

<p>NW CORNER SEC. 27 LAT. = 32.2829508°N LONG. = 103.5687577°W NMSP EAST (FT) N = 467512.36 E = 777619.12</p> <p>W/4 CORNER SEC. 27 LAT. = 32.2756899°N LONG. = 103.5687542°W NMSP EAST (FT) N = 464870.84 E = 777639.03</p> <p>SECTION CORNER LAT. = 32.2684420°N LONG. = 103.5687493°W NMSP EAST (FT) N = 462234.08 E = 777659.34</p> <p>W/4 CORNER SEC. 34 LAT. = 32.2611700°N LONG. = 103.5687420°W NMSP EAST (FT) N = 459588.56 E = 777680.44</p> <p>SW CORNER SEC. 34 LAT. = 32.2539037°N LONG. = 103.5687408°W NMSP EAST (FT) N = 456945.13 E = 777699.63</p>		<p>N/4 CORNER SEC. 27 LAT. = 32.2829394°N LONG. = 103.5602131°W NMSP EAST (FT) N = 467527.14 E = 780259.81</p> <p>BOTTOM OF HOLE LAT. = 32.2756487°N LONG. = 103.5552989°W NMSP EAST (FT) N = 464885.77 E = 781797.76</p> <p>QUARTER CORNER SCALED</p> <p>NOTE: LATITUDE AND LONGITUDE COORDINATES ARE SHOWN USING THE NORTH AMERICAN DATUM OF 1983 (NAD83). LISTED NEW MEXICO STATE PLANE EAST COORDINATES ARE GRID (NAD83). BASIS OF BEARING AND DISTANCES USED ARE NEW MEXICO STATE PLANE EAST COORDINATES MODIFIED TO THE SURFACE. ELEVATION VALUES ARE NAVD 88.</p> <p>SEC. 27</p> <p>THISTLE UNIT 117H ELEV. = 3637.8' LAT. = 32.2543901°N (NAD83) LONG. = 103.5531530°W NMSP EAST (FT) N = 457156.76 E = 782517.19</p> <p>S/4 CORNER SEC. 34 SCALED</p>		<p>NE CORNER SEC. 27 LAT. = 32.2829270°N LONG. = 103.5516698°W NMSP EAST (FT) N = 467541.76 E = 782900.10</p> <p>E/4 CORNER SEC. 27 LAT. = 32.2757053°N LONG. = 103.5516694°W NMSP EAST (FT) N = 464914.49 E = 782919.36</p> <p>SECTION CORNER LAT. = 32.2684152°N LONG. = 103.5516675°W NMSP EAST (FT) N = 462262.37 E = 782939.28</p> <p>E/4 CORNER SEC. 34 SCALED</p> <p>SE CORNER SEC. 34 LAT. = 32.2538795°N LONG. = 103.5516653°W NMSP EAST (FT) N = 456974.34 E = 782978.47</p>		<p>¹⁷ OPERATOR CERTIFICATION</p> <p>I hereby certify that the information contained herein is true and complete to the best of my knowledge and belief, and that this organization either owns a working interest or unleased mineral interest in the land including the proposed bottom hole location or has a right to drill this well at this location pursuant to a contract with an owner of such a mineral or working interest, or to a voluntary pooling agreement or a compulsory pooling order heretofore entered by the division.</p> <p><i>Rebecca Deal</i> 1/16/2017 Signature Date</p> <p>Rebecca Deal, Regulatory Analyst Printed Name</p> <p>rebecca.deal@dmv.com E-mail Address</p>
		<p>¹⁸ SURVEYOR CERTIFICATION</p> <p>I hereby certify that the well location shown on this plat was plotted from field notes of actual surveys made by me or under my supervision, and that the same is true and correct to the best of my belief.</p> <p>DECEMBER 16, 2016 Date of Survey</p> <p><i>FILIMON F. JARAMILLO</i> Signature and Seal of Professional Surveyor</p> <p>Certificate Number: FILIMON F. JARAMILLO, PLS 12797 SURVEY NO. 5078</p>				

**SECTION 34, TOWNSHIP 23 SOUTH, RANGE 33 EAST, N.M.P.M.
LEA COUNTY, STATE OF NEW MEXICO
SITE MAP**



NOTE: LATITUDE AND LONGITUDE COORDINATES ARE SHOWN USING THE NORTH AMERICAN DATUM OF 1983 (NAD83). LISTED NEW MEXICO STATE PLANE EAST COORDINATES ARE GRID (NAD83). BASIS OF BEARING AND DISTANCES USED ARE NEW MEXICO STATE PLANE EAST COORDINATES MODIFIED TO THE SURFACE. ELEVATION VALUES ARE NAVD 88.



DIRECTIONS TO LOCATION

FROM STATE HWY. 128 AND CR. J2 (BRININSTOOL) GO NORTH ON J2 3.1 MILES, TURN RIGHT ON CALICHE ROAD AND GO EAST 0.45 MILE, BEND LEFT AND GO NORTH 0.1 MILE, BEND RIGHT AND GO SOUTHEAST 0.4 MILE, BEND LEFT AND GO EAST 0.21 MILE TO A PROPOSED ROAD SURVEY AND FOLLOW FLAGS SOUTH 27' TO THE NORTHEAST CORNER OF PAD FOR THIS LOCATION.

**DEVON ENERGY PRODUCTION COMPANY, L.P.
THISTLE UNIT 117H**

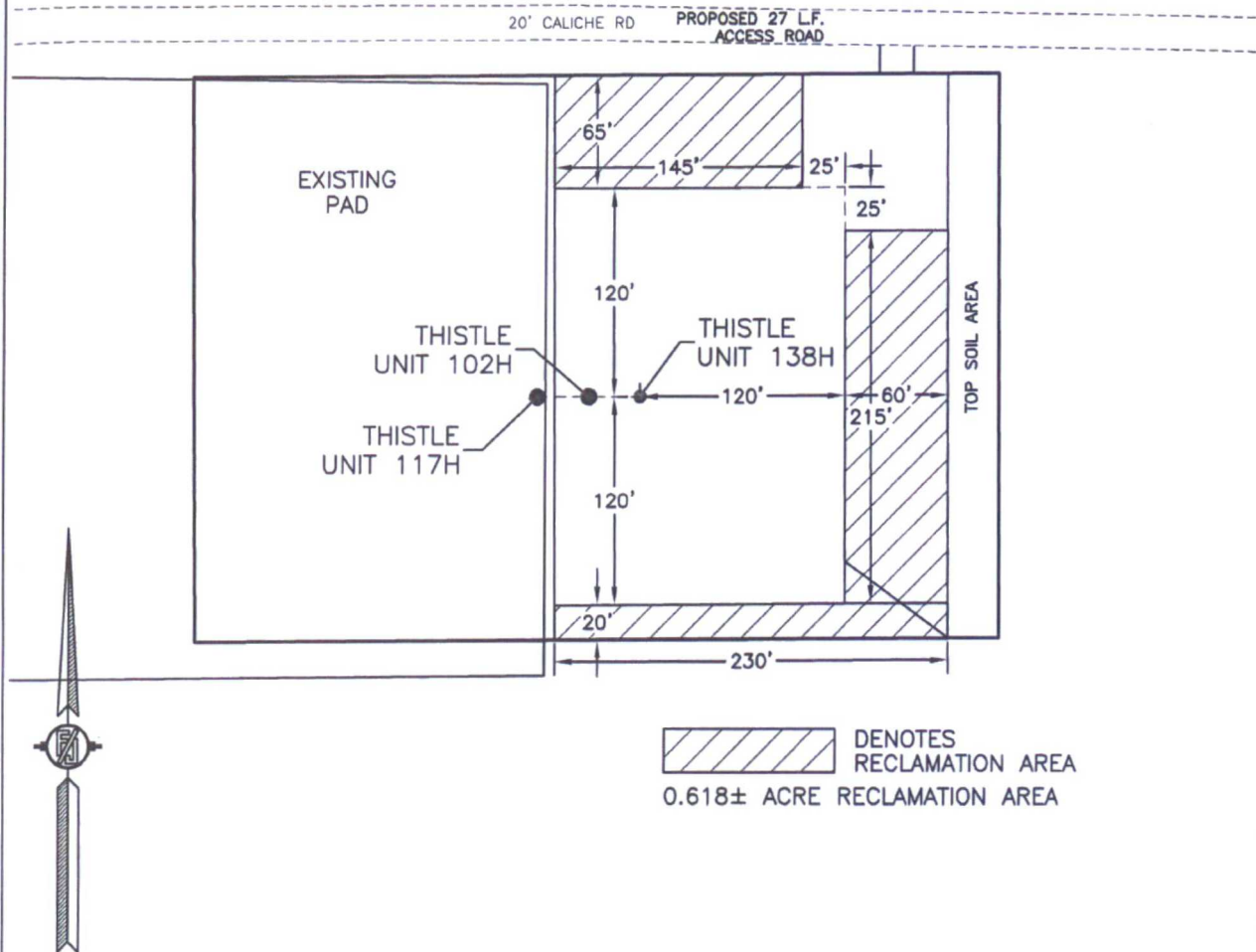
**LOCATED 185 FT. FROM THE SOUTH LINE
AND 460 FT. FROM THE EAST LINE OF
SECTION 34, TOWNSHIP 23 SOUTH,
RANGE 33 EAST, N.M.P.M.
LEA COUNTY, STATE OF NEW MEXICO**

DECEMBER 1, 2016

SURVEY NO. 5078

MADRON SURVEYING, INC. 301 SOUTH CANAL (575) 234-3341 CARLSBAD, NEW MEXICO

**PROPOSED INTERIM SITE RECLAMATION
FOR THISTLE UNIT 117H**
SECTION 34, TOWNSHIP 23 SOUTH, RANGE 33 EAST, N.M.P.M.
LEA COUNTY, STATE OF NEW MEXICO



010 50 100 200
SCALE 1" = 100'

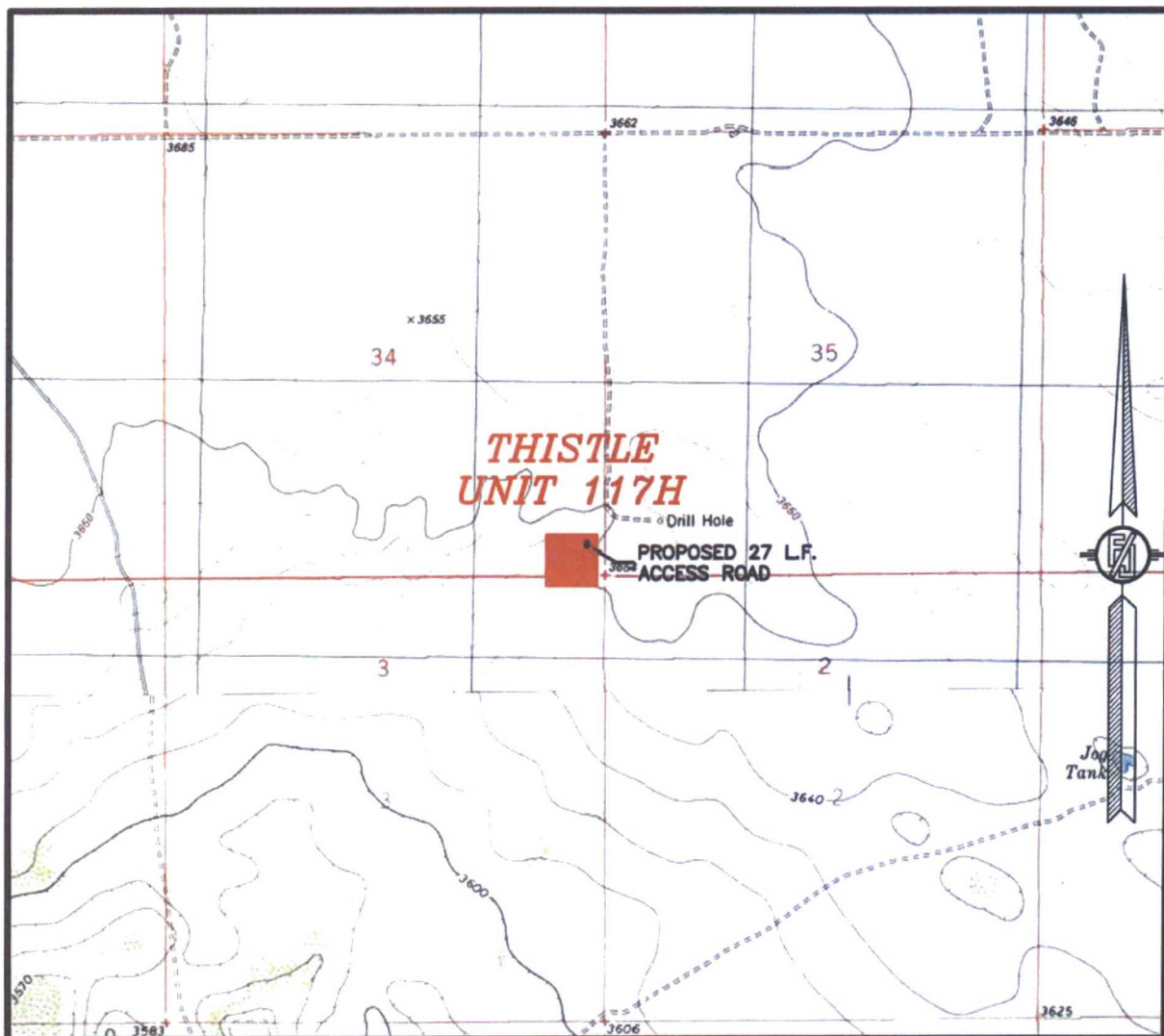
DEVON ENERGY PRODUCTION COMPANY, L.P.
THISTLE UNIT 117H
LOCATED 185 FT. FROM THE SOUTH LINE
AND 460 FT. FROM THE EAST LINE OF
SECTION 34, TOWNSHIP 23 SOUTH,
RANGE 33 EAST, N.M.P.M.
LEA COUNTY, STATE OF NEW MEXICO

DECEMBER 1, 2016

MADRON SURVEYING, INC. 301 SOUTH CANAL (575) 234-3341 CARLSBAD, NEW MEXICO

SURVEY NO. 5078

SECTION 34, TOWNSHIP 23 SOUTH, RANGE 33 EAST, N.M.P.M.
LEA COUNTY, STATE OF NEW MEXICO
LOCATION VERIFICATION MAP



USGS QUAD MAP:
TIP TOP WELLS

NOT TO SCALE

DEVON ENERGY PRODUCTION COMPANY, L.P.
THISTLE UNIT 117H

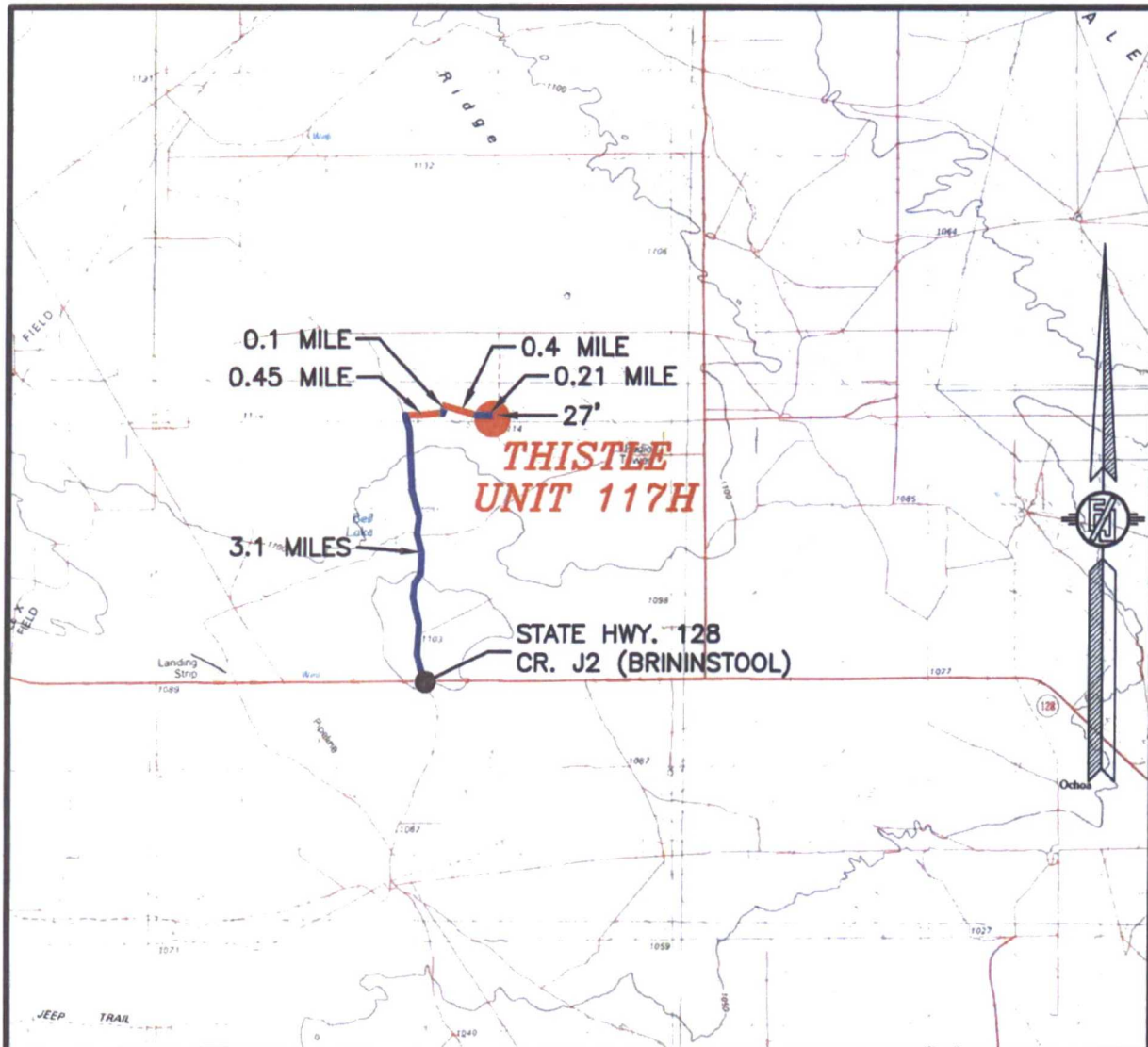
LOCATED 185 FT. FROM THE SOUTH LINE
AND 460 FT. FROM THE EAST LINE OF
SECTION 34, TOWNSHIP 23 SOUTH,
RANGE 33 EAST, N.M.P.M.
LEA COUNTY, STATE OF NEW MEXICO

DECEMBER 1, 2016

SURVEY NO. 5078

MADRON SURVEYING, INC. 301 SOUTH CANAL (575) 234-3341 CARLSBAD, NEW MEXICO

SECTION 34, TOWNSHIP 23 SOUTH, RANGE 33 EAST, N.M.P.M.
LEA COUNTY, STATE OF NEW MEXICO
VICINITY MAP



DISTANCES IN MILES

NOT TO SCALE

DIRECTIONS TO LOCATION

FROM STATE HWY. 128 AND CR. J2 (BRINSTOOL) GO NORTH ON J2 3.1 MILES, TURN RIGHT ON CALICHE ROAD AND GO EAST 0.45 MILE, BEND LEFT AND GO NORTH 0.1 MILE, BEND RIGHT AND GO SOUTHEAST 0.4 MILE, BEND LEFT AND GO EAST 0.21 MILE TO A PROPOSED ROAD SURVEY AND FOLLOW FLAGS SOUTH 27' TO THE NORTHEAST CORNER OF PAD FOR THIS LOCATION.

**DEVON ENERGY PRODUCTION COMPANY, L.P.
THISTLE UNIT 117H**

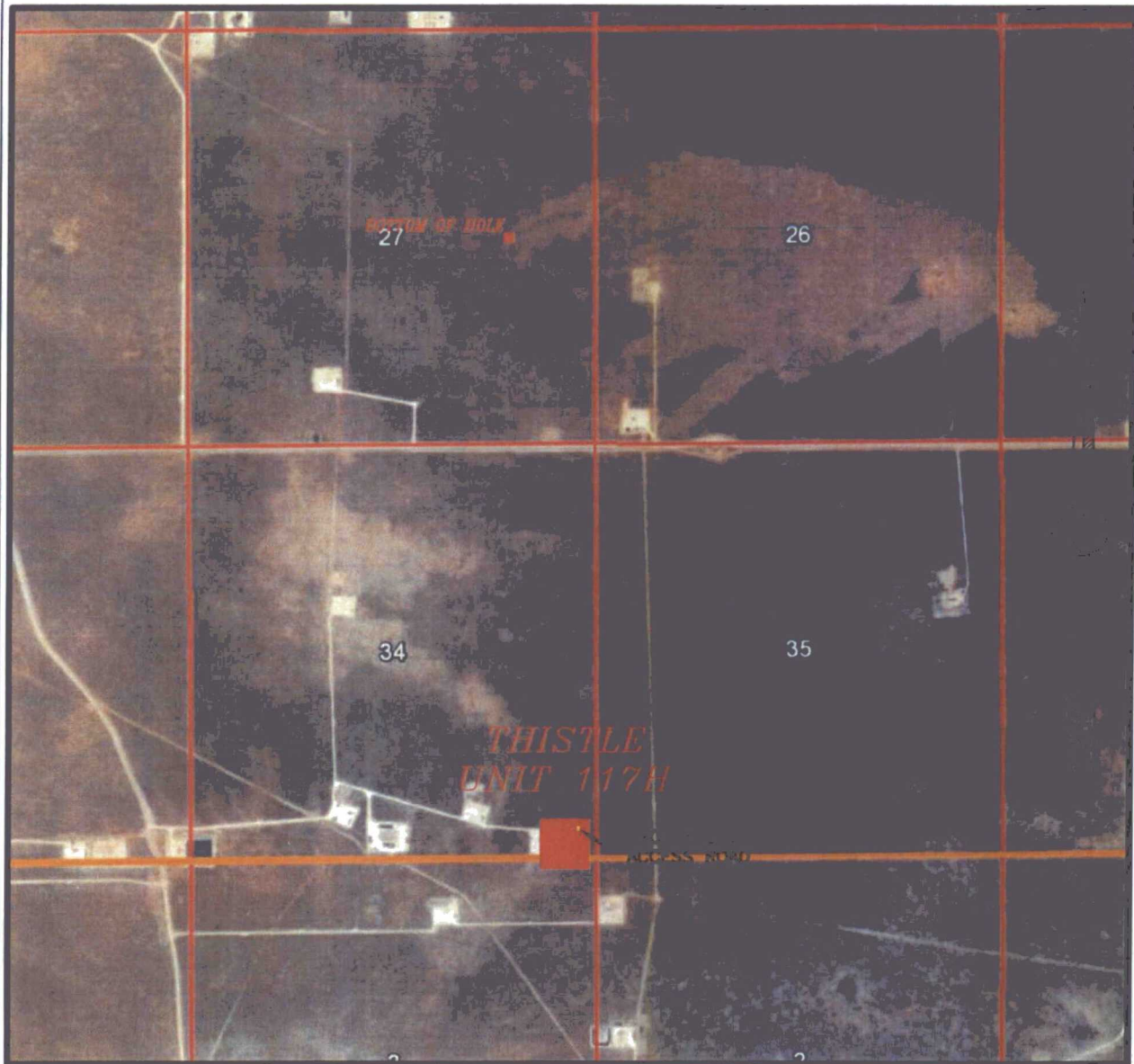
LOCATED 185 FT. FROM THE SOUTH LINE
AND 460 FT. FROM THE EAST LINE OF
SECTION 34, TOWNSHIP 23 SOUTH,
RANGE 33 EAST, N.M.P.M.
LEA COUNTY, STATE OF NEW MEXICO

DECEMBER 1, 2016

SURVEY NO. 5078

MADRON SURVEYING, INC. 301 SOUTH CANAL (575) 234-3341 CARLSBAD, NEW MEXICO

SECTION 34, TOWNSHIP 23 SOUTH, RANGE 33 EAST, N.M.P.M.
LEA COUNTY, STATE OF NEW MEXICO
AERIAL PHOTO



NOT TO SCALE
AERIAL PHOTO:
GOOGLE EARTH
FEB. 2014

DEVON ENERGY PRODUCTION COMPANY, L.P.
THISTLE UNIT 117H

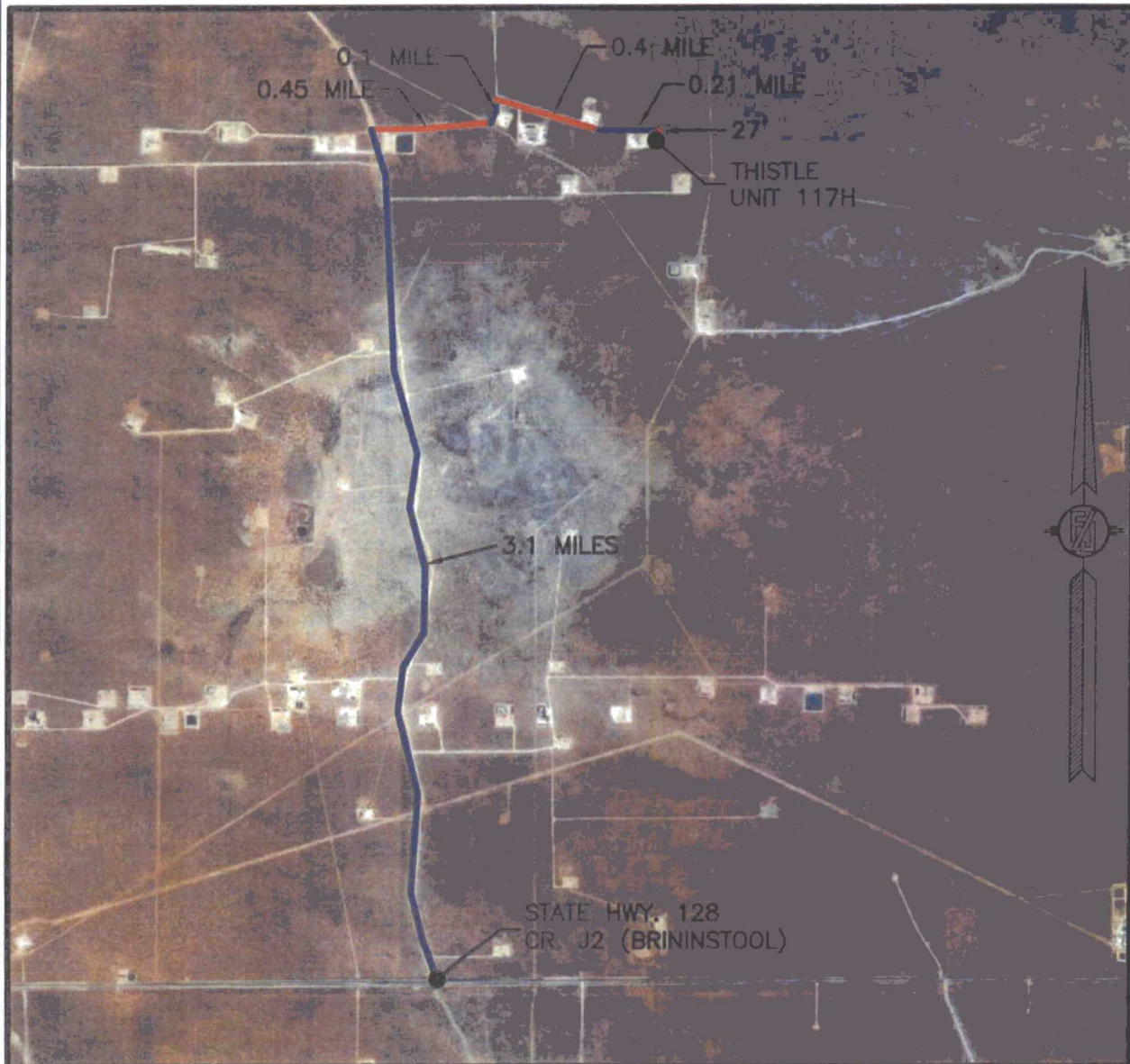
LOCATED 185 FT. FROM THE SOUTH LINE
AND 460 FT. FROM THE EAST LINE OF
SECTION 34, TOWNSHIP 23 SOUTH,
RANGE 33 EAST, N.M.P.M.
LEA COUNTY, STATE OF NEW MEXICO

DECEMBER 1, 2016

SURVEY NO. 5078

MADRON SURVEYING, INC. 301 SOUTH CANAL (575) 234-3341 CARLSBAD, NEW MEXICO

SECTION 34, TOWNSHIP 23 SOUTH, RANGE 33 EAST, N.M.P.M.
LEA COUNTY, STATE OF NEW MEXICO
AERIAL ACCESS ROUTE MAP



NOT TO SCALE
AERIAL PHOTO:
GOOGLE EARTH
FEB. 2014

DEVON ENERGY PRODUCTION COMPANY, L.P.
THISTLE UNIT 117H

LOCATED 185 FT. FROM THE SOUTH LINE
AND 460 FT. FROM THE EAST LINE OF
SECTION 34, TOWNSHIP 23 SOUTH,
RANGE 33 EAST, N.M.P.M.
LEA COUNTY, STATE OF NEW MEXICO

DECEMBER 1, 2016

SURVEY NO. 5078

MADRON SURVEYING, INC. 301 SOUTH CANAL (575) 234-3341 CARLSBAD, NEW MEXICO