

UNITED STATES  
DEPARTMENT OF THE INTERIOR  
BUREAU OF LAND MANAGEMENT

**SUNDRY NOTICES AND REPORTS ON WELLS**  
*Do not use this form for proposals to drill or to re-enter an abandoned well. Use form 3160-3 (APD) for such proposals.*

OLD-HOBBS

FORM APPROVED  
OMB NO. 1004-0137  
Expires: January 31, 2018

5. Lease Serial No. NMNM96782
6. If Indian, Allottee or Tribe Name
7. If Unit or CA/Agreement, Name and/or No.
8. Well Name and No. FEDERAL "27" 2
9. API Well No. 30-025-29400
10. Field and Pool or Exploratory Area EK; BONE SPRING
11. County or Parish, State LEA COUNTY, NM

**SUBMIT IN TRIPLICATE - Other instructions on page 2**

1. Type of Well <input checked="" type="checkbox"/> Oil Well <input type="checkbox"/> Gas Well <input type="checkbox"/> Other	
2. Name of Operator FASKEN OIL AND RANCH LTD. Contact: ADDISON LONG E-Mail: addisonl@forl.com	
3a. Address 6101 HOLIDAY HILL ROAD MIDLAND, TX 79707	3b. Phone No. (include area code) Ph: 432-687-1777
4. Location of Well (Footage, Sec., T., R., M., or Survey Description) Sec 27 T18S R33E SESE 660FSL 1830FEL 560 260	

**12. CHECK THE APPROPRIATE BOX(ES) TO INDICATE NATURE OF NOTICE, REPORT, OR OTHER DATA**

TYPE OF SUBMISSION	TYPE OF ACTION
<input type="checkbox"/> Notice of Intent	<input type="checkbox"/> Acidize <input type="checkbox"/> Deepen <input type="checkbox"/> Production (Start/Resume) <input type="checkbox"/> Water Shut-Off
<input checked="" type="checkbox"/> Subsequent Report	<input type="checkbox"/> Alter Casing <input type="checkbox"/> Hydraulic Fracturing <input type="checkbox"/> Reclamation <input type="checkbox"/> Well Integrity
<input type="checkbox"/> Final Abandonment Notice	<input type="checkbox"/> Casing Repair <input type="checkbox"/> New Construction <input type="checkbox"/> Recomplete <input type="checkbox"/> Other
	<input type="checkbox"/> Change Plans <input type="checkbox"/> Plug and Abandon <input checked="" type="checkbox"/> Temporarily Abandon
	<input type="checkbox"/> Convert to Injection <input type="checkbox"/> Plug Back <input type="checkbox"/> Water Disposal

13. Describe Proposed or Completed Operation: Clearly state all pertinent details, including estimated starting date of any proposed work and approximate duration thereof. If the proposal is to deepen directionally or recompleat horizontally, give subsurface locations and measured and true vertical depths of all pertinent markers and zones. Attach the Bond under which the work will be performed or provide the Bond No. on file with BLM/BIA. Required subsequent reports must be filed within 30 days following completion of the involved operations. If the operation results in a multiple completion or recompleat in a new interval, a Form 3160-4 must be filed once testing has been completed. Final Abandonment Notices must be filed only after all requirements, including reclamation, have been completed and the operator has determined that the site is ready for final inspection.

Please see attachment for the temporary abandonment work done 11/30-12/14/2016 for the above well.

*Submit NOI for BLM approval by 02/01/2018 to return well to "beneficial use" or a plan for plug and abandonment.*

14. I hereby certify that the foregoing is true and correct. Electronic Submission #361214 verified by the BLM Well Information System For FASKEN OIL AND RANCH LTD., sent to the Hobbs Committed to AFMSS for processing by JENNIFER SANCHEZ on 12/20/2016 ()	
Name (Printed/Typed) ADDISON LONG	Title REGULATORY ANALYST
Signature (Electronic Submission)	Date 12/16/2016

**THIS SPACE FOR FEDERAL OR STATE OFFICE USE**

Approved By _____	Title _____	Date _____
Conditions of approval, if any, are attached. Approval of this notice does not warrant or certify that the applicant holds legal or equitable title to those rights in the subject lease which would entitle the applicant to conduct operations thereon.		
Office _____		

Title 18 U.S.C. Section 1001 and Title 43 U.S.C. Section 1212, make it a crime for any person knowingly and willfully to make to any department or agency of the United States any false, fictitious or fraudulent statements or representations as to any matter within its jurisdiction.

(Instructions on page 2)

**\*\* OPERATOR-SUBMITTED \*\* OPERATOR-SUBMITTED \*\* OPERATOR-SUBMITTED \*\***

**Accepted for Record Only**

*msb/ocd 2/7/2017  
CITACT - RBDMs - ✓*





Federal 27 #2 Temporarily Abandon

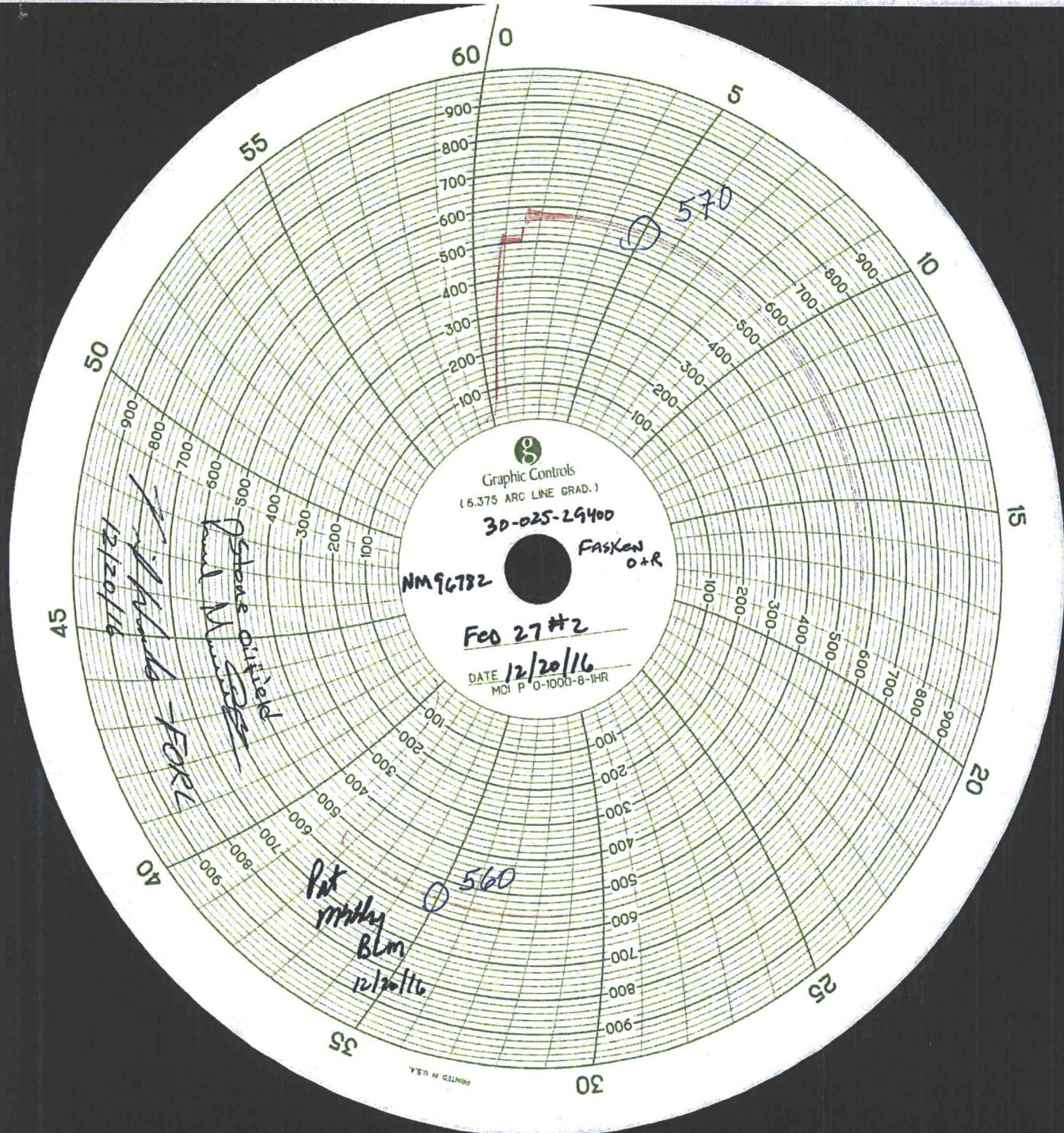
11/30/16-12/14/16

Notified NMOCD at 8:40 a.m., spoke with Mark Whitaker and was informed that OCD would not be involved with this project. Called BLM at 8:41 a.m., spoke with Jim and informed him of intent to T&A well. RUPU (Viva Rig No. 29) and PU on polish rod w/ 12 pts weight. LD PR, POW and inspected rods and boxes, observed light paraffin on rods with rods pulled wet, rods and couplings in good condition. Found top pin on 246<sup>th</sup> rod from surface (6152') parted. RIW with 1-1/2" sleeve type fishing tool and fished 3/4" rod shoulder. Unseated pump with tubing on strong vacuum. POW with 66- 1" Norris "97" rods w/ SHSMC, 96- 7/8" Norris "97" rods with FHSMC, 113- 3/4" Norris "97" rods w/ FGSMC and LD rod w/ broken pin and LD 14- 1-1/2" K-bars w/ SHSMC, No-Tap Tool and 2" x 1-1/2" x 24' RHBC pump with 1-1/4 x 20' GA. POW and tallied 223 jts 2-7/8" N80 tubing and LD BHA. Calipered 6- 3-1/2" DC's, top sub, and bit sub. RIW with new 4-5/8" Atlas Copco skirted cone bit (SN:93002322), bit sub, and PU DC's and top sub with 2-7/8" cup type seating nipple and 1 jt. RIW w/ 40 jts 2-7/8" (263 jts total) tubing, tagged at 8710' w/ cement on CIBP at 8740'. Installed stripper, RU swivel, established reverse circulation, and cleaned out to 8740'. Recovered frac balls, sand and small amount of cement in returns and circulated well clean. RD swivel, POW w/ 88 jts tubing, and left bit swinging at 5914' w/ top perf at 5946'. Bled off pressure, RIW w/ 88 jts of tubing and tagged at 8740' (tally). RU power swivel and established reverse circulation. Drilled soft cement to 8775' and tagged CIBP at 9:50 AM. Drilled on CIBP for 10 minutes and lost circulation losing 30 bbls of fluid before regaining circulation. Resumed drilling on CIBP at 10:10 losing fluid at 0.75 bpm rate. Fell free at 11:10 and circulated clean. RD power swivel and RIW w/ total of 289 jts of tubing setting down at 9521', and was unable to push through. RU power swivel and resumed drilling at 1:00 PM, rotated through in 6' and fell free. RD swivel and continued RIW setting down again at 9750'. Picked up swivel and started rotating at 1:50 PM, drilled on CIBP for 2.5 hrs and fell free. Washed down to 10,064' and circulated well clean getting scale in returns. RD swivel and POW w/ 130 jts of tubing w/ EOT at 5914'. RIW with 130 jts tubing, changed stripper rubber, and PU swivel. Established reverse circulation with 35 bfw w/ biocide and continued to drill/wash down from 10,064'. Recovered large amount of frac balls, washed down through sand and scale, and tagged solid at 10,437' by tubing depth with plug set at 10,427' with 2.5 sks cement on plug (suspected TOC at 10,406'). Note: Found upper plug set at 8740' at 8775' by tubing depth 12/5/16. PU and circulated bottoms up 2-1/2 times, LD swivel and POW standing 200 jts tubing with bit swinging at 4,034' w/ 118 jts plus BHA left in well. SWI, left casing open to flow line and SDON. Lost 90 bbls wtr to formation today. Contractor delivered 100 bfw to location, emptied and jetted out reverse pit, and hauled 110 bbls to disposal. Talked to Mr. Jim w/ BLM of tag point at 10,437' was approved and instructed to continue with T&A procedure at 4:10 P.M. Texas Time. POW w/ 118 jts of tubing and LD BHA. RIW w/ 2-7/8" bull plug, 2-7/8" x 4' perf tubing sub, seat nipple and 324 jts of 2-7/8" tubing. Tagged at 10,439.15' (tally), LD 1 jt of tubing and picked 24' of tubing subs w/ EOT swinging at 10,438'. RU Basic cement pump truck, pumped 18 bbw to establish circulation, pumped total of 100 bbls 9 ppg gelled brine water, 5 bfw spacer, 45 sx Class "H" cement (s.w. 15.8 ppg, yield 1.18 ft<sup>3</sup>/sk (53.1 cf / 9.45 bbl), 2 bfw spacer and displaced tubing w/ 56 bbls gelled brine water (had balanced plug). RD pump truck, POW 168 jts of tubing w/ RIW w/ 131 jts of tubing tagging TOC at 10,097' (tally). Contacted BLM (Jim) and was given approval to proceed at 9:45 AM T.T. POW w/ 138 jts of tubing and tubing pulled wet. Attempted to pump out tubing with no success, swabbed down tubing and RU mud bucket. Finished POW standing 254 jts of tubing in derrick and found 16 jts plugged. RIW w/ 5-1/2" Hydroset CIBP, x-o, seat nipple and 181 jts of tubing. Left CIBP swinging at 5892'. EOT at 5925'. RIW with tubing from 5,892' with 90 jts tubing and PU 20' subs with plug at 8778'. ~~Contacted Mr. Jim w/ BLM at 9:06 Texas Time and was instructed to set plug and proceed with~~



~~procedure to set CIBP at 8,778' and set 40 sx Class "H" cement on plug.~~  
Dropped setting ball down tubing and waited 30" for ball to drop through mud laden bw. Pumped 15 bbls mud laden bw to load tubing and set CIBP with plug set with 1600 psi. Packed off plug and released plug. PU and lightly tagged plug and PU 4' with EOT at 8,774'. Attempted to circulate with additional mud laden bw and found controls and air lines on pump truck frozen up. POW with subs and 90 jts tubing with EOT at 5,892'. SWI and SDON. Called Jim w/ BLM 1:45 p.m. and reported progress and that we would pump cement plug in the morning. RU cement truck and ran all controls checking all valves for proper operation. RIW with 90 jts tubing and subs w/ EOT at 8774' above CIBP set at 8778', established circulation with 30 bbls mud laden 9# ppg bw. Pumped 5 bfw, mixed and pumped 40 sx Class "H" Cement (16.4 ppg, 1.06 yield cuft/sk 7.5 bbls slurry) followed by 2 bfw spacer and displaced w/ 45.5 bbls 9# mud laden bw w/ 1.5 bbls cement left in tubing above balanced spot. POW with 18 jts tubing pulling dry w/ EOT at 8189' and pumped 3 bbls 9# mud laden bw down tubing. Continued POW with additional 72 jts with tubing pulling dry w/ EOT at 5,892'. Contractor hauled 110 bbw and 130 bfw to location, and hauled 100 bbls mud laden bw and cement wash up fluids to public disposal. Reported to BLM (Mr. Pat McKelvey) at 11:30 a.m. of plug being set and of intent to tag Monday morning. RIW w/ 77 jts of tubing tagging TOC at 8306' (tubing tally). BLM (Pat McKelvey) was on location for tag and gave approval to proceed with procedure. POW and LD 38 jts of tubing w/ EOT swinging at 7557' (tally). RU Basic cement pump truck and pumped 17 bbls mud laden bw to establish circulation. Mixed and pumped 5 bfw spacer, 40 sx Class "H" cement (s.w. 16.4 ppg, yield 1.18 ft<sup>3</sup>/sk (47.2 cf/ 8.40 bbl/264.5')), 2 bfw spacer and displaced tubing w/ 39 bbls mud laden bw (had balanced plug). RD pump truck, POW w/ 52 jts of tubing w/ EOT at 5892'. RIW w/ 34 jts of tubing tagging TOC at 6993' (tally). BLM (Pat McKelvey) was on location for tag and gave approval to proceed with procedure. POW LD 42 jts of tubing and stood back 181 jts of tubing. RIW w/ 5-1/2" 10k CIBP, drain sub, xo, seat nipple and 181 jts of tubing. Set CIBP at 5902' (tally). RU Basic cement pump truck, pumped 100 bbls 2% KCL water + packer fluid, 5 bfw spacer, 25 sx Class "C" cement (s.w. 14.8 ppg, yield 1.32 ft<sup>3</sup>/sk (33 cf/5.87 bbl)), 5 bfw spacer and displaced tubing w/ 27 bbls 2% KCL water + packer fluid (had balanced plug). RD pump truck, POW LD 8 jts of tubing and stood back 173 jts of tubing, and LD setting tool. RIW w/ 2-7/8" perf tubing sub, seat nipple and 153 jts of tubing w/ EOT at 4983'. RIW w/ 19 jts of tubing tagging TOC at 5673' (tally). Contacted BLM (Pat McKelvey) with TOC tag information and was given approval to proceed with procedure. POW w/ EOT at 5535', RU Stone pump truck and tested overall to 530 psi on chart recorder for 30" w/ no pressure change. RIW w/ 96- 7/8" Norris "97" steel rods, POW and LD same. POW and LD 170 jts of work string tubing. ND BOP and NUWH w/ 2 jts of 2-7/8" EUE 8rd N80 in wellhead. Loaded well w/ 14 bbls of 2% KCL water. SWI, cleaned location and RDP. Released all rental equipment.





Graphic Controls  
(6.375 ARC LINE GRAD.)

30-025-29400

NM96782

Fasken  
O+R

Fed 27 #2

DATE 12/20/16  
MCI P 0-1000-8-1HR

Steve Oltrop  
Paul Munnick  
12/20/16  
Fasken

Pat  
milly  
BLM  
12/20/16  
560

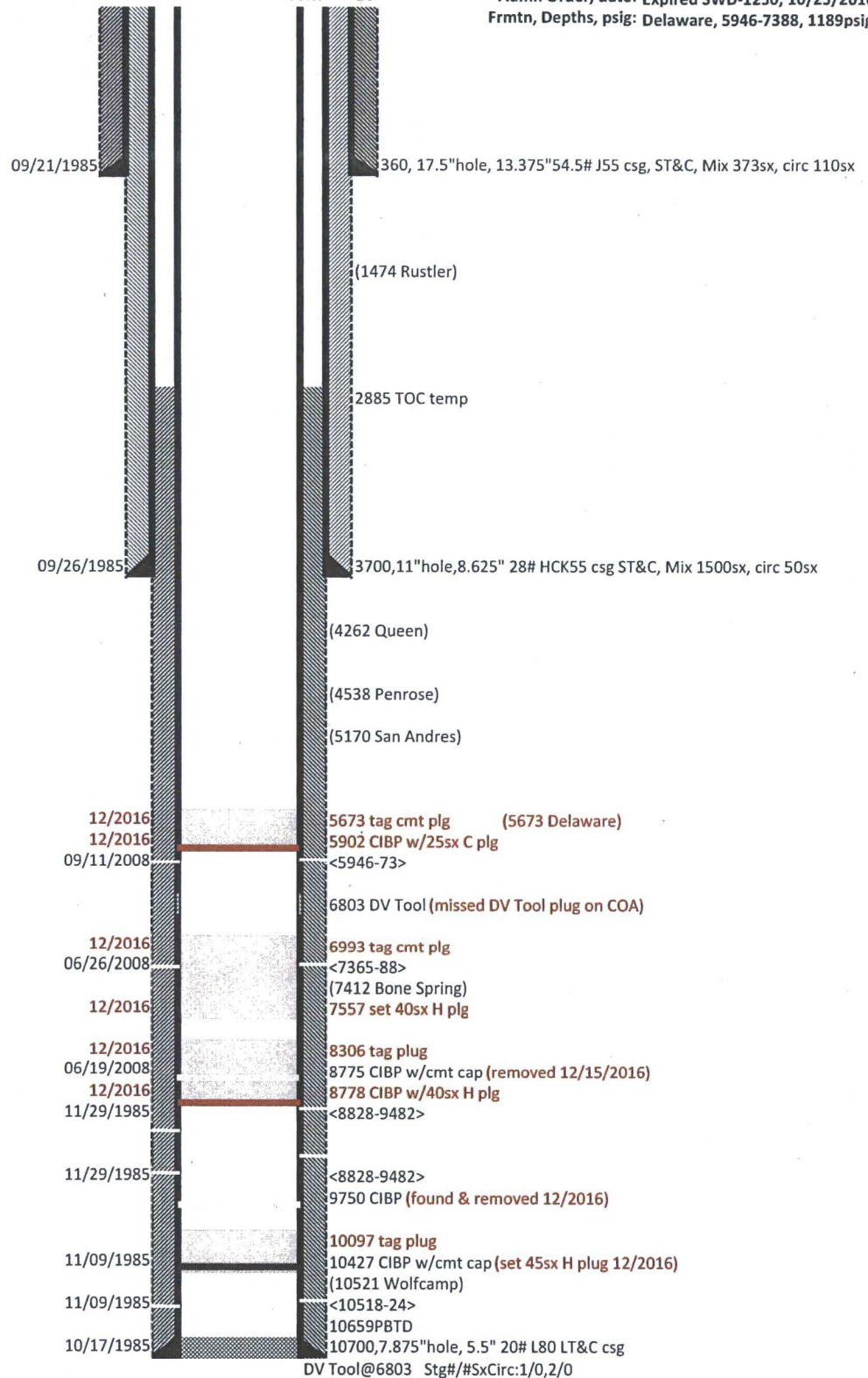
PRINTED IN U.S.A.



**Operator: Faskin Oil & Ranch Limited**  
**Surface Lease: NM96782**  
**Case No: NM96782**  
**Subsurface Concerns for Casing Designs: KFC**  
**BHL: NM96782**  
**Lease Agreement**  
 Well Status: Oil  
 Spud date: 9/21/1985  
 Plug'd Date:  
 Reentry Date:

**Well: FEDERAL 27-2**  
**API: 3002529400**  
**@ Srfce: T18S-R33E,27.560s660e**  
**@ M TD: T18S-R33E,27.560s660e**  
**Estate: FVF**  
**CWDW, R of W: 0**  
**Admn Order, date: Expired SWD-1250, 10/25/2010**  
**Frmtn, Depths, psig: Delaware, 5946-7388, 1189psig**

KB: 3817  
 GL: 3801  
 Corr: 16



12/2016 MIT held 570 -560psig 30m

Diagram last updated: 01/30/2017