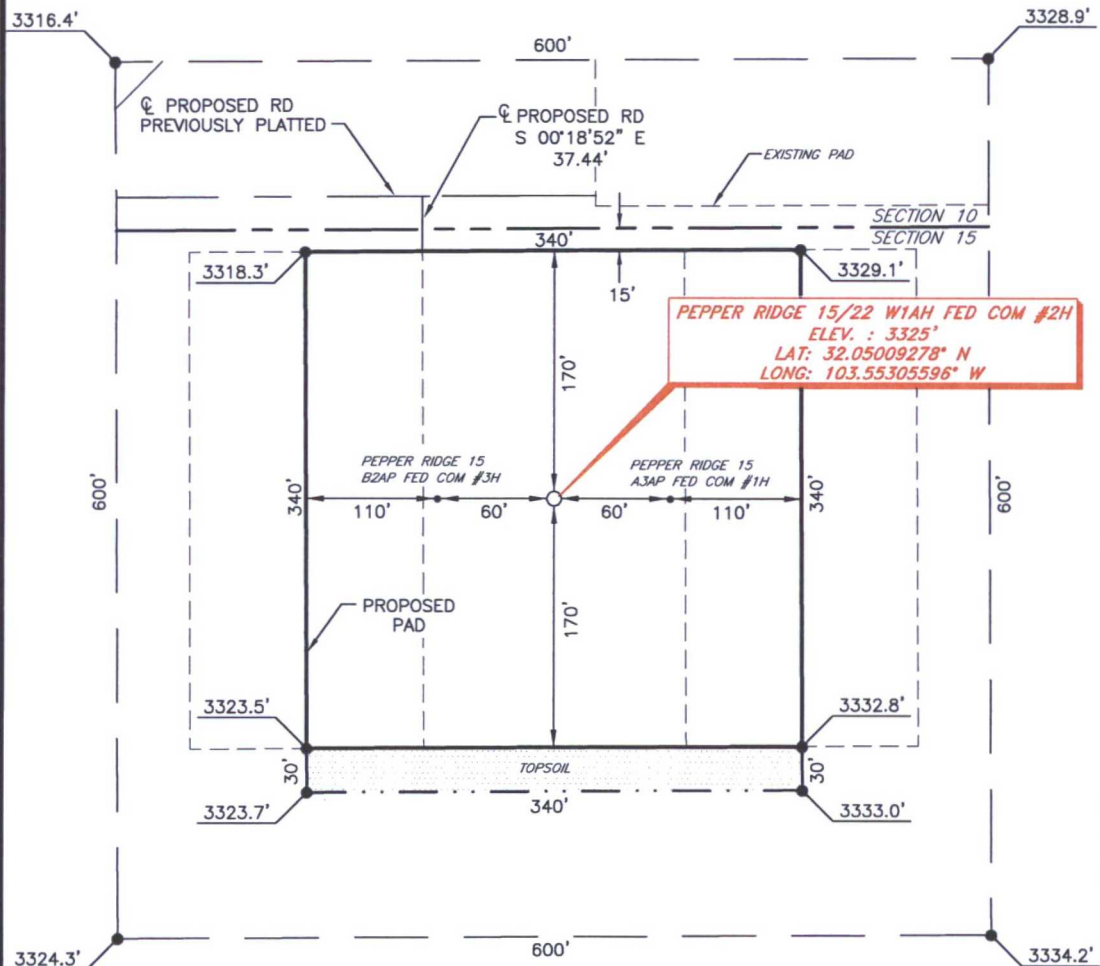


**MEWBOURNE OIL COMPANY**  
**PEPPER RIDGE 15/22 W1AH FED COM #2H**  
**(185' FNL & 580' FEL)**  
**SECTION 15, T26S, R33E**  
**N. M. P. M., LEA CO., NEW MEXICO**



DIRECTIONS TO LOCATION

From the intersection of CR-1 (Orla Rd.) and CR-2 (Battle Axe Rd.)  
 Go East on CR-2 approx. 10.5 miles to a lease road on the right;  
 Turn right and go South approx. 256 feet thru fence to lease road on left;  
 Turn left and go East approx. 0.4 miles to proposed road;  
 Continue East following proposed approx. 0.3 miles to proposed road on right;  
 Turn right and go South approx. 208 feet to location on the left.

SCALE: 1" = 100'  
 0 50 100  
 BEARINGS ARE  
 NAD 27 GRID - NM EAST  
 DISTANCES ARE  
 GROUND.

Firm No.: TX 10193838 NM 4655451

Copyright 2015 - All Rights Reserved

NO.	REVISION	DATE
JOB NO.:	LS1505227	
DWG. NO.:	1505227PAD	

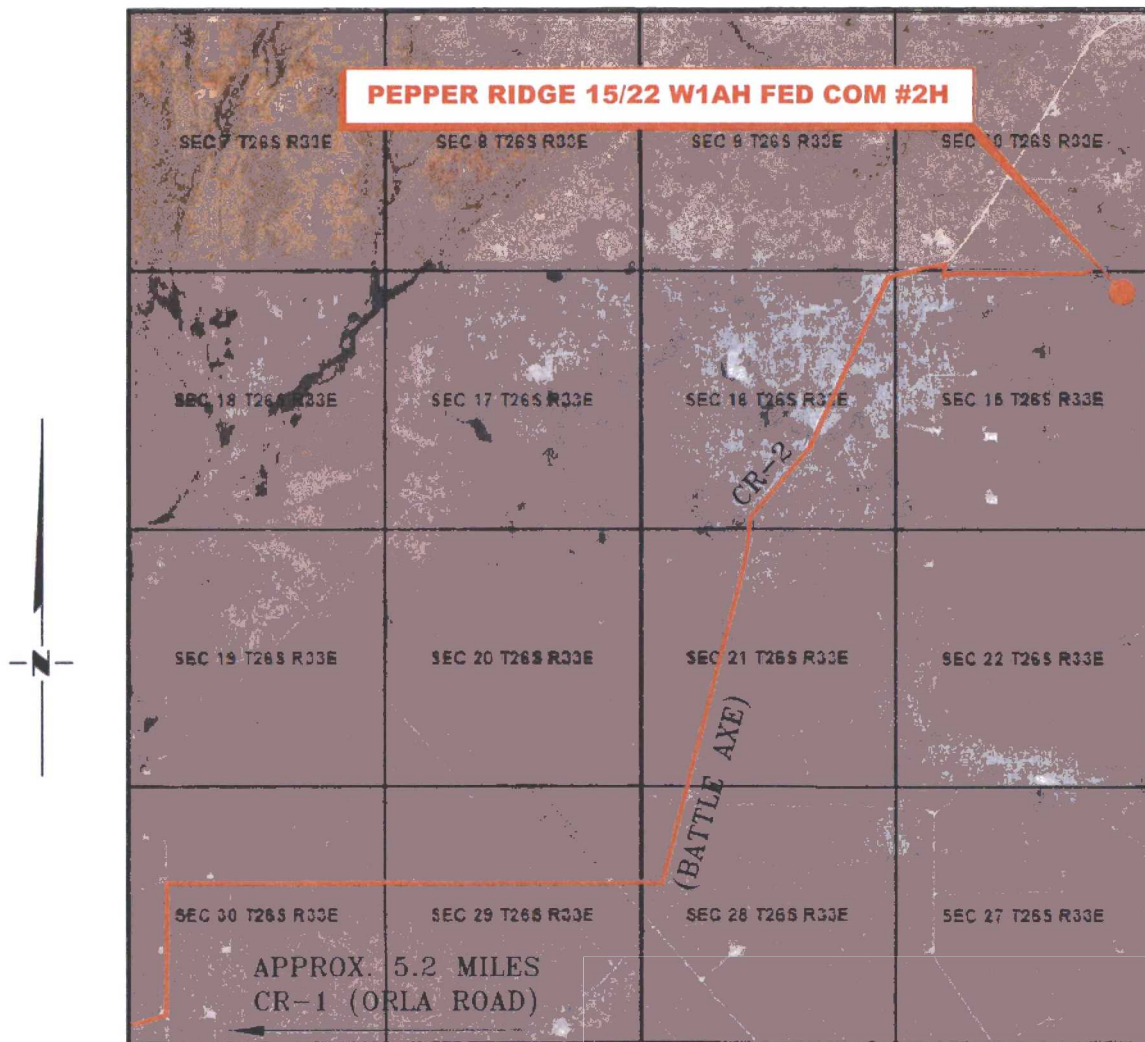
**RRC**

308 W. BROADWAY ST., HOBBS, NM 88240 (575) 964-8200

SCALE: 1" = 100'
DATE: 5-12-15
SURVEYED BY: BK/ER
DRAWN BY: JC
APPROVED BY: RMH
SHEET : 1 OF 1

# VICINITY MAP

NOT TO SCALE



*SECTION 15, TWP. 26 SOUTH, RGE. 33 EAST,  
N. M. P. M., LEA COUNTY, NEW MEXICO*

OPERATOR: Mewbourne Oil Company LOCATION: 185' FNL & 580' FEL  
LEASE: Pepper Ridge 15/22 W1AH Fed Com ELEVATION: 3325'  
WELL NO.: 2H

Firm No.: TX 10193838 NM 4655451

Copyright 2015 - All Rights Reserved

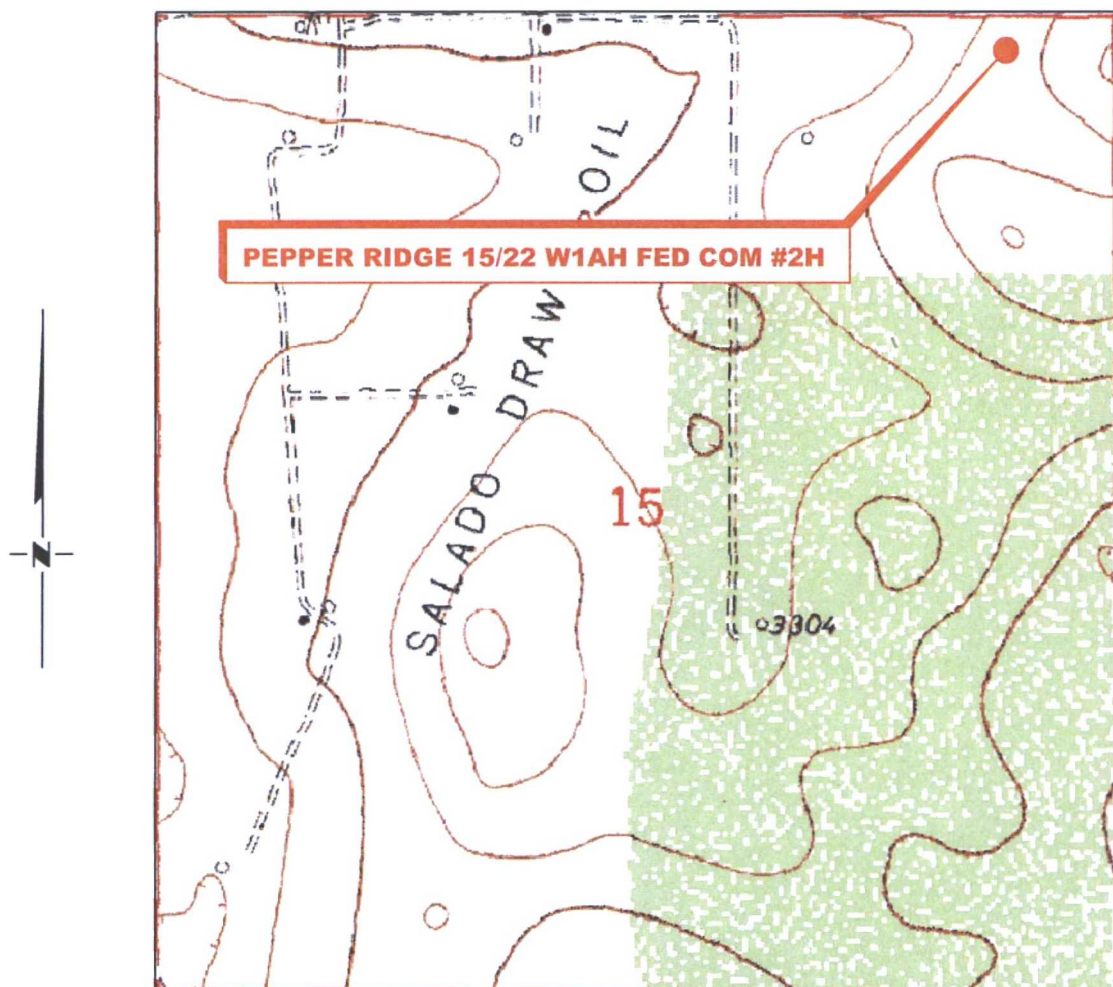
NO.	REVISION	DATE
JOB NO.: LS1505227		
DWG. NO.: 1505227VM		

## RRC

308 W. BROADWAY ST., HOBBS, NM 88240 (575) 964-8200

SCALE: N. T. S.  
DATE: 5-12-15  
SURVEYED BY: BK/ER  
DRAWN BY: JC  
APPROVED BY: RMH  
SHEET : 1 OF 1

# LOCATION VERIFICATION MAP



SECTION 15, TWP. 26 SOUTH, RGE. 33 EAST,  
N. M. P. M., LEA CO., NEW MEXICO

OPERATOR: Mewbourne Oil Company LOCATION: 185' FNL & 580' FEL  
 LEASE: Pepper Ridge 15/22 W1AH Fed Com CONTOUR INTERVAL: 10'  
 WELL NO.: 2H USGS TOPO. SOURCE MAP:  
 ELEVATION: 3325' Paduca Breaks East, NM (1973)

Firm No.: TX 10193838 NM 4655451

Copyright 2015 - All Rights Reserved

NO.	REVISION	DATE
JOB NO.:	LS1505227	
DWG. NO.:	1505227LVM	

## RRC

308 W. BROADWAY ST., HOBBS, NM 88240 (575) 964-8200

SCALE: 1" = 1000'  
 DATE: 5-12-15  
 SURVEYED BY: BK/ER  
 DRAWN BY: JC  
 APPROVED BY: RMH  
 SHEET : 1 OF 1

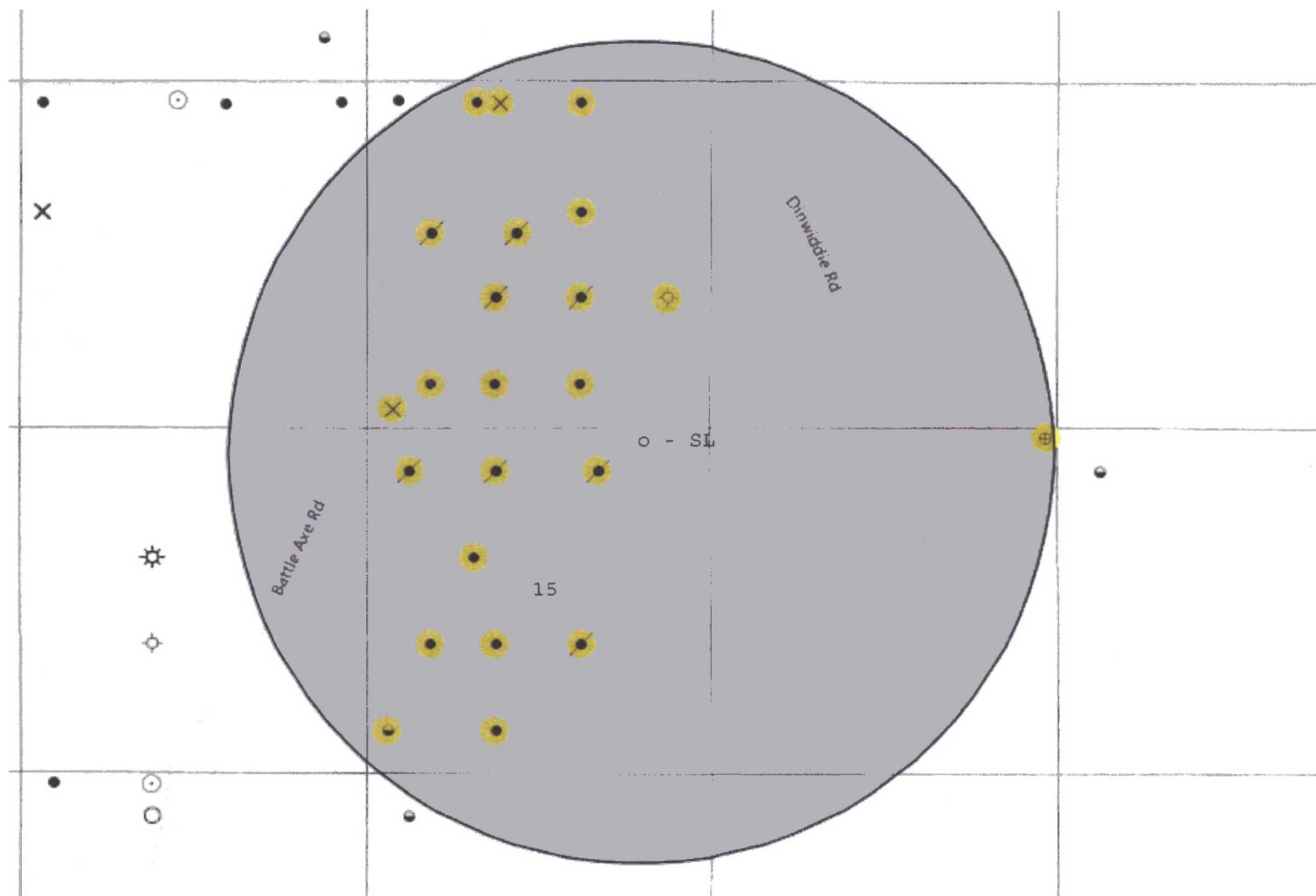


Exhibit "4" - SL - Pepper Ridge 15/22 WIAH Fed Com #2H

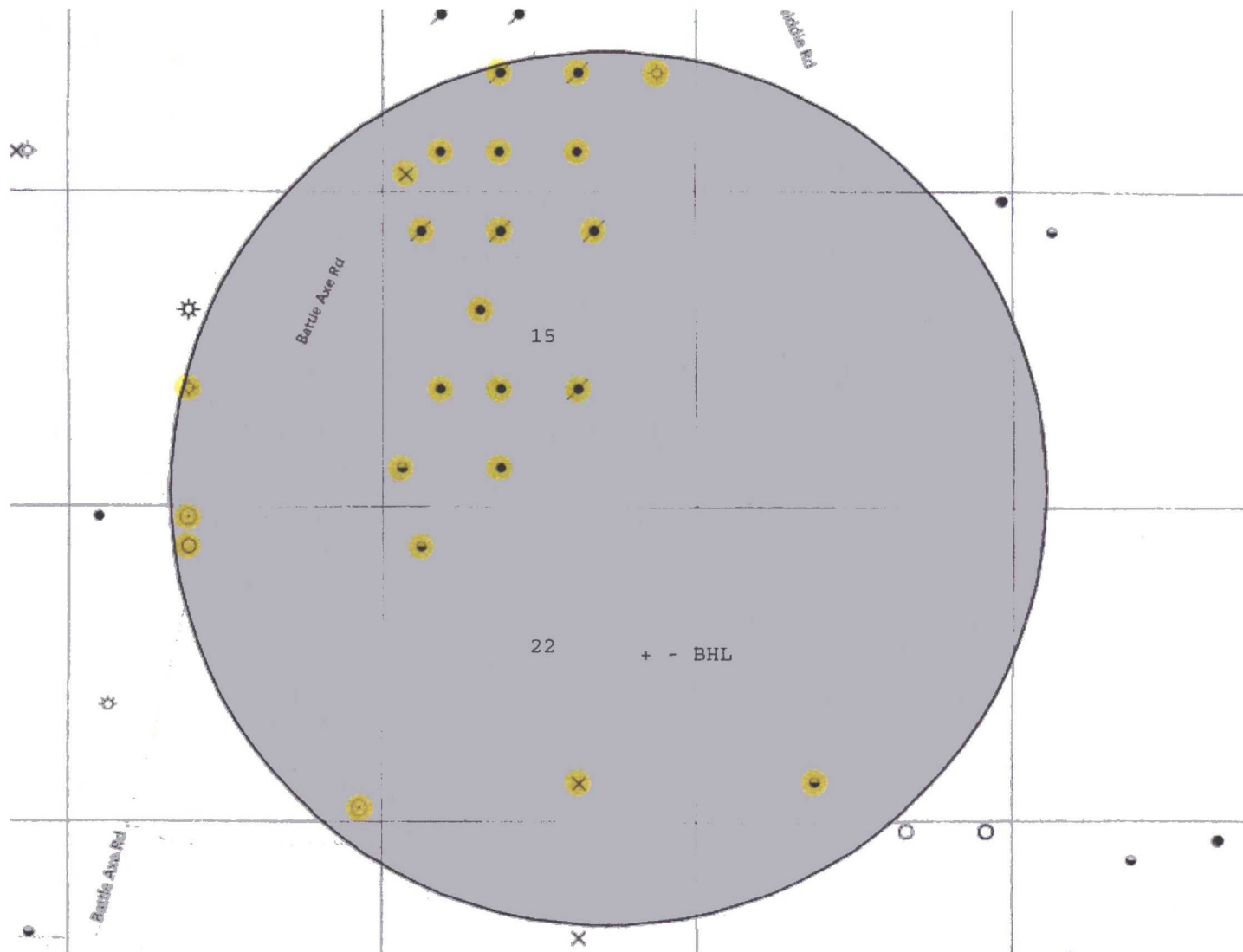


Exhibit "4A" - BHL - Pepper Ridge 15/22 W1AH Fed Com #2H

# Pepper Ridge 15/22 W1AH Fed Com #2H

