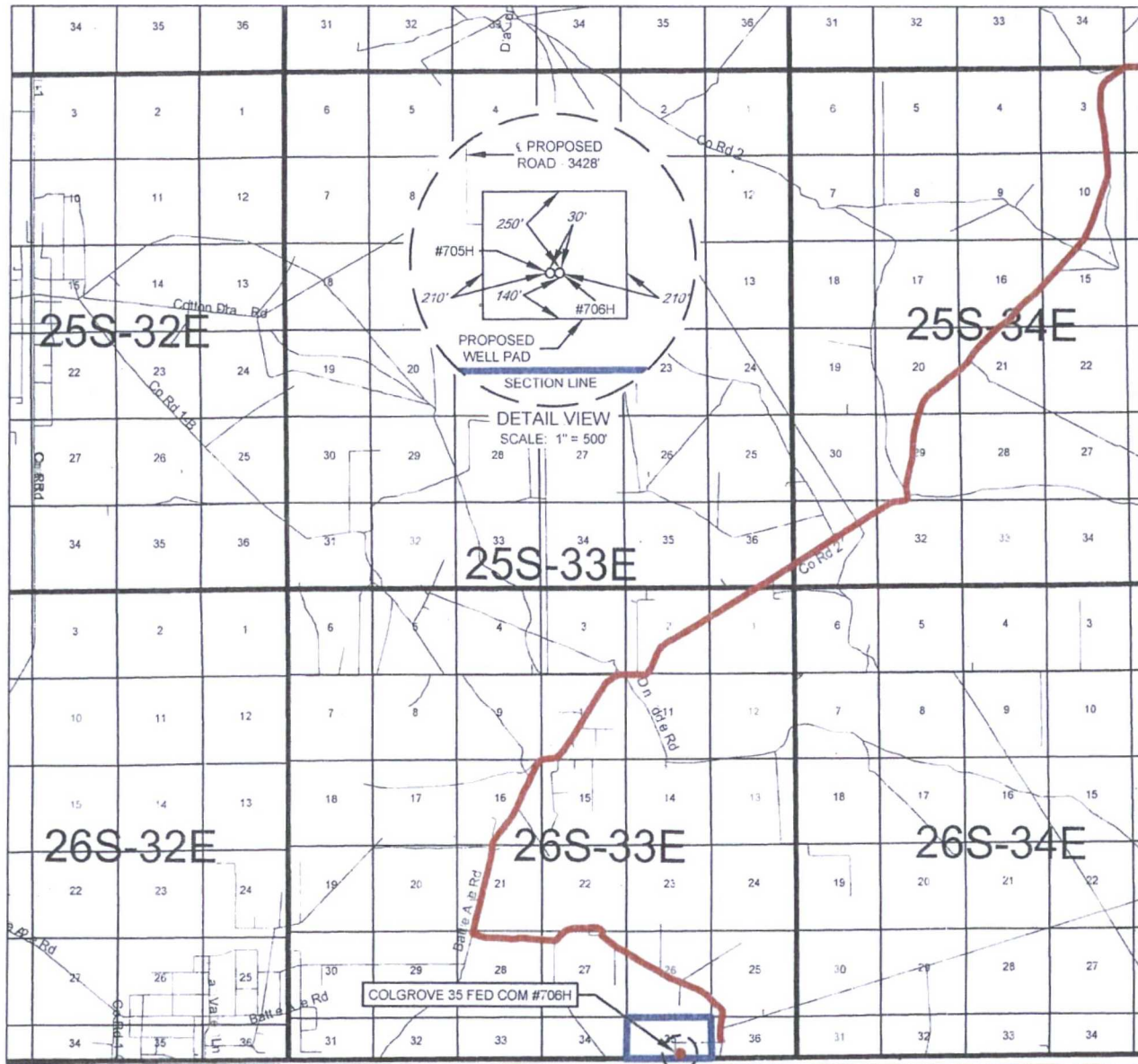


EXHIBIT 2 VICINITY MAP



LEASE NAME & WELL NO. COLGROVE 35 FED COM #706H

SECTION 35 TWP 26-S RGE 33-E SURVEY N.M.P.M.

COUNTY LEA STATE NM

DESCRIPTION 302' FSL & 1960' FEL

DISTANCE & DIRECTION

FROM INT. OF NM-18 N. & NM-128. GO WEST ON NM-128 ±14.1 MILES. THENCE SOUTHWEST (LEFT) ON BATTLE AXE RD. ±17.1 MILES. THENCE EAST (LEFT) ON LEASE RD. ±3.0 MILES. THENCE SOUTH (RIGHT) ON A PROPOSED RD. ±3428 FEET TO A POINT ±258 FEET NORTHWEST OF THIS LOCATION.

THIS EASEMENT/SERVITUDE LOCATION SHOWN HEREON HAS BEEN SURVEYED ON THE GROUND UNDER MY SUPERVISION AND PREPARED ACCORDING TO THE EVIDENCE FOUND AT THE TIME OF SURVEY, AND DATA PROVIDED BY EOG RESOURCES, INC. THIS CERTIFICATION IS MADE AND LIMITED TO THOSE PERSONS OR ENTITIES SHOWN ON THE FACE OF THIS PLAT AND IS NON-TRANSFERABLE. THIS SURVEY IS CERTIFIED FOR THIS TRANSACTION ONLY.

ALL BEARINGS, DISTANCES, AND COORDINATE VALUES CONTAINED HEREON ARE GRID BASED UPON THE NEW MEXICO STATE PLANE COORDINATE SYSTEM, EAST ZONE OF THE NORTH AMERICAN DATUM 1927 U.S. SURVEY FEET.

SCALE 1" = 10000'

0' 5000' 10000'



TOPOGRAPHIC
LOYALTY INNOVATION LEGACY

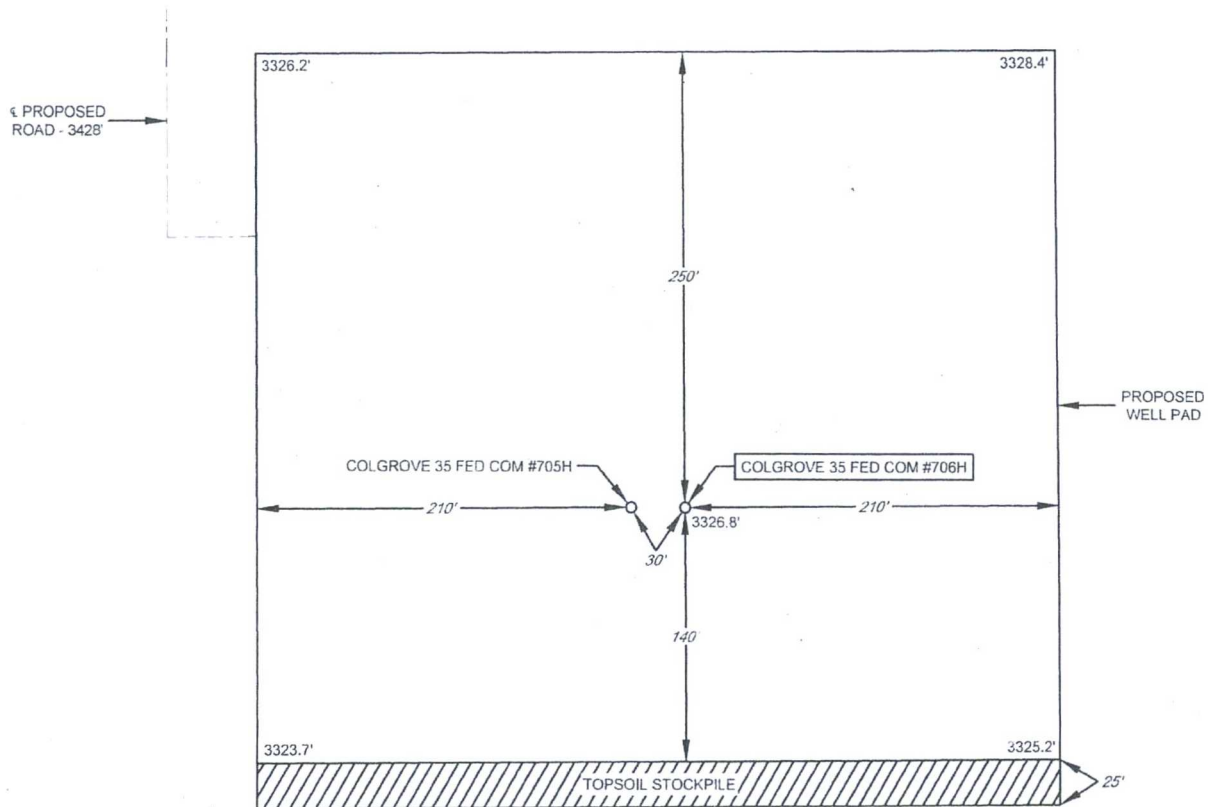
1400 EVERMAN PARKWAY, Ste. 197 • FT. WORTH, TEXAS 76140
TELEPHONE: (817) 744-7512 • FAX (817) 744-7548
2903 NORTH BIG SPRING • MIDLAND, TEXAS 79705
TELEPHONE: (432) 682-1653 OR (800) 757-1653 • FAX (432) 682-1743
WWW.TOPOGRAPHIC.COM



EXHIBIT 2B

SECTION 35, TOWNSHIP 26-S, RANGE 33-E, N.M.P.M.
LEA COUNTY, NEW MEXICO

DETAIL VIEW
SCALE: 1" = 100'

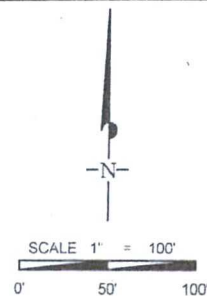


SECTION LINE

LEASE NAME & WELL NO.: COLGROVE 35 FED COM #706H
#706H LATITUDE N 32.0009631 #706H LONGITUDE W 103.5404636

LEGEND

— — — — — EXISTING ROAD
— — — — — SECTION LINE
- - - - - PROPOSED ROAD



ALL BEARINGS, DISTANCES, AND COORDINATE VALUES CONTAINED HEREON ARE GRID
BASED UPON THE NEW MEXICO STATE PLANE COORDINATE SYSTEM, EAST ZONE OF THE
NORTH AMERICAN DATUM 1927, U.S. SURVEY FEET

THIS PROPOSED PAD SITE LOCATION SHOWN HEREON HAS BEEN SURVEYED ON THE GROUND UNDER
MY SUPERVISION AND PREPARED ACCORDING TO THE EVIDENCE FOUND AT THE TIME OF SURVEY,
AND DATA PROVIDED BY EOG RESOURCES, INC. THIS CERTIFICATION IS MADE AND LIMITED TO THOSE
PERSONS OR ENTITIES SHOWN ON THE FACE OF THIS PLAT AND IS NON-TRANSFERABLE. THIS
SURVEY IS CERTIFIED FOR THIS TRANSACTION ONLY.



TOPOGRAPHIC
LOYALTY INNOVATION LEGACY

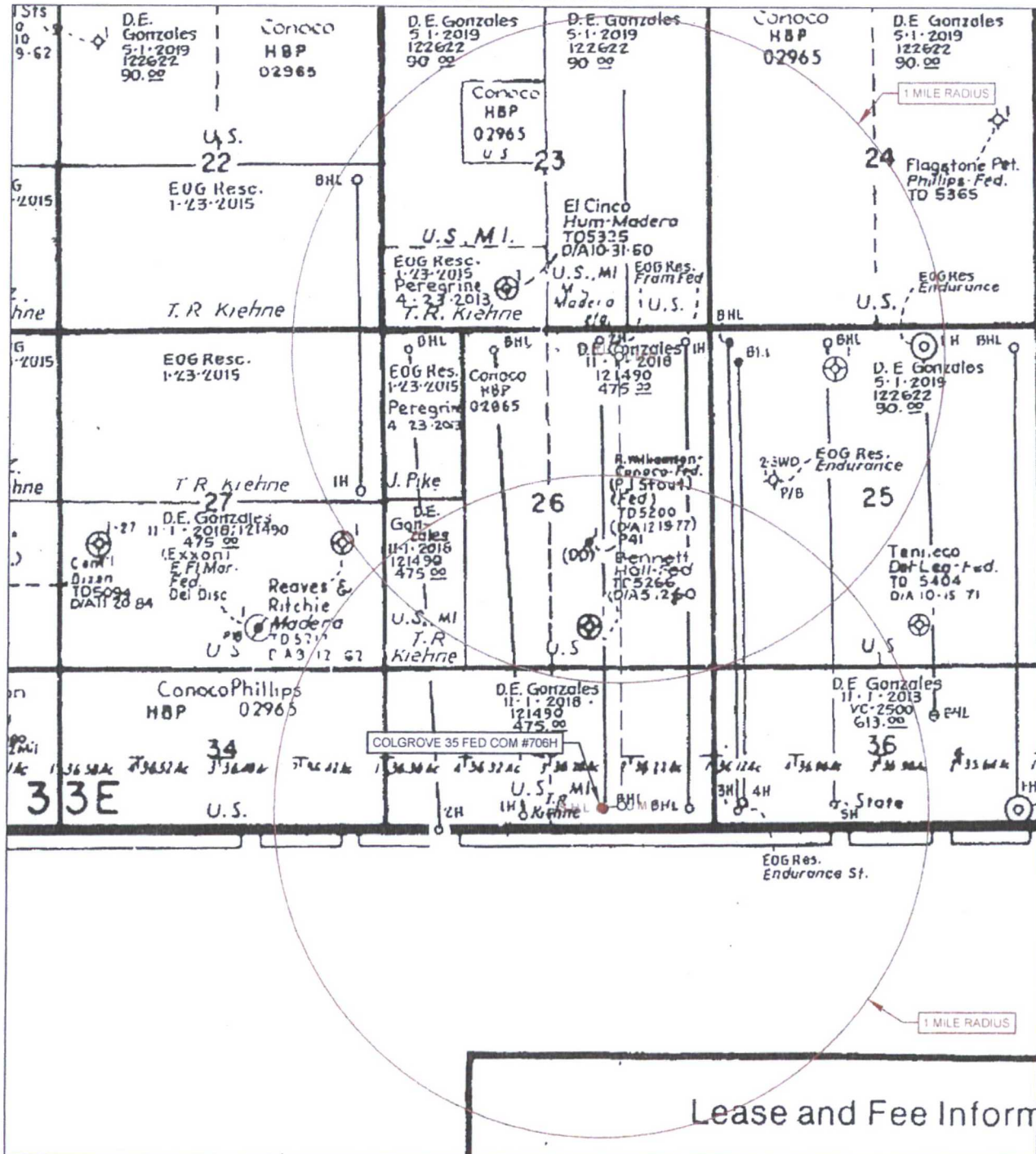
1400 EVERMAN PARKWAY, Ste. 197 • FT. WORTH, TEXAS 76140
TELEPHONE (817) 744-7512 • FAX (817) 744-7548
2903 NORTH BIG SPRING • MIDLAND, TEXAS 79705
TELEPHONE: (432) 682-1653 OR (800) 767-1653 • FAX (432) 682-1743
WWW.TOPOGRAPHIC.COM

ORIGINAL DOCUMENT SIZE: 8.5" X 11"

S:\SURVEY\EOG_MIDLAND\COLGROVE_35_FED_COM\FINAL_PRODUCTS\ILO_COLGROVE35FEDCOM_706H.DWG 5/3/2016 2:48:01 PM ccs33333

EXHIBIT 3

SECTION 35, TOWNSHIP 26-S, RANGE 33-E, N.M.P.M.
LEA COUNTY, NEW MEXICO



LEASE NAME & WELL NO. COLGROVE 35 FED COM #706H

SCALE NTS

#706H LATITUDE N 32.0009631 #706H LONGITUDE W 103.5404636

ALL BEARINGS, DISTANCES AND COORDINATE VALUES CONTAINED HEREON ARE GRID
BASED UPON THE NEW MEXICO STATE PLANE COORDINATE SYSTEM, EAST ZONE OF THE
NORTH AMERICAN DATUM 1927, U.S. SURVEY FEET

THIS EASEMENT/SERVITUDE LOCATION SHOWN HEREON HAS BEEN SURVEYED ON THE GROUND
UNDER MY SUPERVISION AND PREPARED ACCORDING TO THE EVIDENCE FOUND AT THE TIME OF
SURVEY, AND DATA PROVIDED BY EOG RESOURCES, INC. THIS CERTIFICATION IS MADE AND LIMITED
TO THOSE PERSONS OR ENTITIES SHOWN ON THE FACE OF THIS PLAT AND IS NON-TRANSFERABLE.
THIS SURVEY IS CERTIFIED FOR THIS TRANSACTION ONLY



TOPOGRAPHIC
LOYALTY INNOVATION LEGAL

1400 EVERMAN PARKWAY, Ste. 157 • FT. WORTH, TEXAS 76140
TELEPHONE: (817) 744-7512 • FAX (817) 744-7548
2903 NORTH BIG SPRING • MIDLAND, TEXAS 79705
TELEPHONE: (432) 682-1653 OR (800) 767-1653 • FAX (432) 682-1743
WWW.TOPOGRAPHIC.COM

EXHIBIT 5

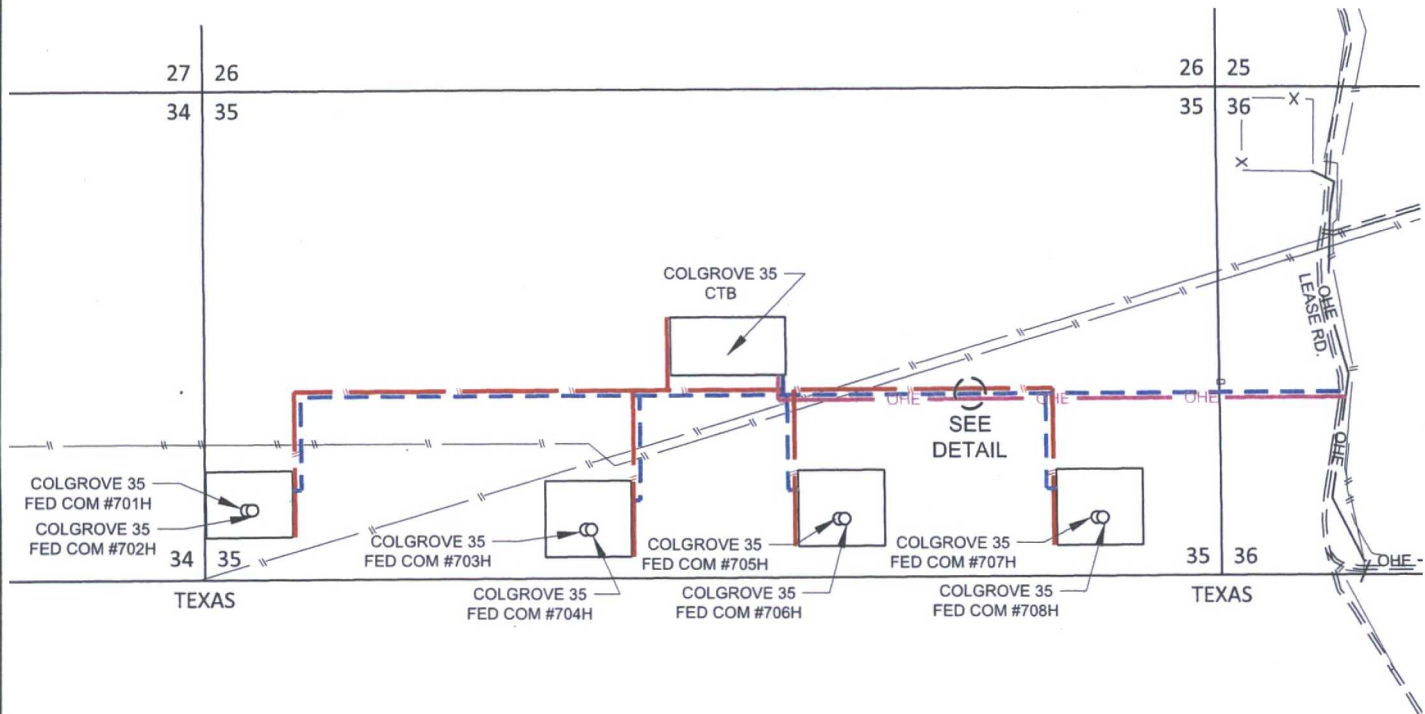
SECTION 35, TOWNSHIP 26-S, RANGE 33-E, N.M.P.M.
LEA COUNTY, NEW MEXICO

COLGROVE INFRASTRUCTURE MAP



SCALE: 1" = 1000'

0' 500' 1000'



--- LEASE ROAD
-TOTAL FOOTAGE 7,722 FT

LEASE RD.

TO COLGROVE 35 FED COM
#707H & #708H.....2,084 FT

COLGROVE 35 FED COM
#705H & #706H.....3,428 FT

TO COLGROVE 35 FED COM
#703H & #704H.....4,247 FT

COLGROVE 35 FED COM
#701H & #702H.....5,946 FT

COLGROVE 35 CTB.....3,011 FT

--- FLOW LINE
-TOTAL FOOTAGE 7,542 FT

COLGROVE 35 CTB

COLGROVE 35 FED COM
#701H & #702H.....3,062 FT

TO COLGROVE 35 FED COM
#703H & #704H.....1,413 FT

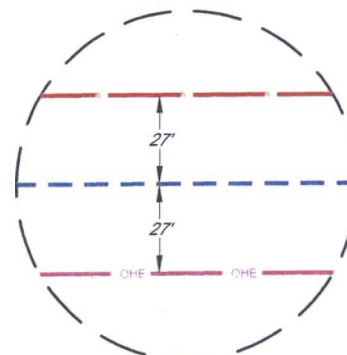
TO COLGROVE 35 FED COM
#705H & #706H.....1,843 FT

TO COLGROVE 35 FED COM
#707H & #708H.....3,188 FT

--- OHE --- ELECTRIC LINE
-TOTAL FOOTAGE 3,090 FT



COLGROVE INFRASTRUCTURE MAP	REVISION:	
	MML	04/22/16
	MML	05/02/16
DATE:	04/20/16	
FILE:SK_COLGROVE_EXHIBIT5_REV2		
DRAWN BY:	MML	
SHEET:	1 OF 1	



DETAIL VIEW
NOT TO SCALE

ENDORANG 16A
10/10

36

ENDORANG 16
CTB

ENDORANG 16A
10/10

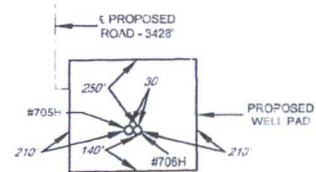
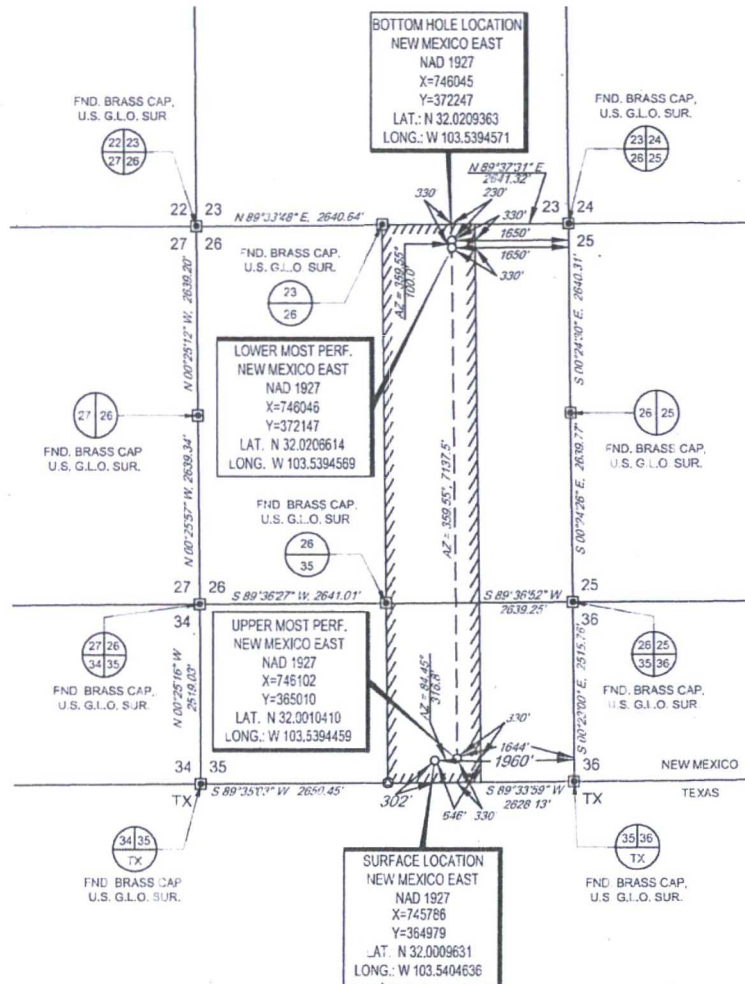
ENDORANG 16A
10/10

1



EXHIBIT 2A

SECTION 35, TOWNSHIP 26-S, RANGE 33-E, N.M.P.M.
LEA COUNTY, NEW MEXICO



LEASE NAME & WELL NO: COLGROVE 35 FED COM #706H

SECTION 35 TWP 26-S RGE 33-E SURVEY N.M.P.M.
COUNTY LEA STATE NM
DESCRIPTION 302' FSL & 1960' FEL

DISTANCE & DIRECTION

FROM INT. OF NM-18 N. & NM-128, GO WEST ON NM-128 ± 14.1
MILES, THENCE SOUTHWEST (LEFT) ON BATTLE AXE RD. ± 17.1
MILES, THENCE EAST (LEFT) ON LEASE RD. ± 3.0 MILES, THENCE
SOUTH (RIGHT) ON A PROPOSED RD. ± 3428 FEET TO A POINT
 ± 258 FEET NORTHWEST OF THIS LOCATION.

ALL BEARINGS, DISTANCES, AND COORDINATE VALUES CONTAINED HEREON ARE GRID
BASED UPON THE NEW MEXICO STATE PLANE COORDINATE SYSTEM, EAST ZONE OF THE
NORTH AMERICAN DATUM 1927, U.S. SURVEY FEET.

THIS EASEMENT-SERVITUDE LOCATION SHOWN HEREON HAS BEEN SURVEYED ON THE GROUND
UNDER MY SUPERVISION AND PREPARED ACCORDING TO THE EVIDENCE FOUND AT THE TIME OF
SURVEY, AND DATA PROVIDED BY EOG RESOURCES, INC. THIS CERTIFICATION IS MADE, AND LIMITED
TO THOSE PERSONS OR ENTITIES SHOWN ON THE FACE OF THIS PLAT AND IS NON-TRANSFERABLE.
THIS SURVEY IS CERTIFIED FOR THIS TRANSACTION ONLY.

DETAIL VIEW
SCALE 1" = 500'



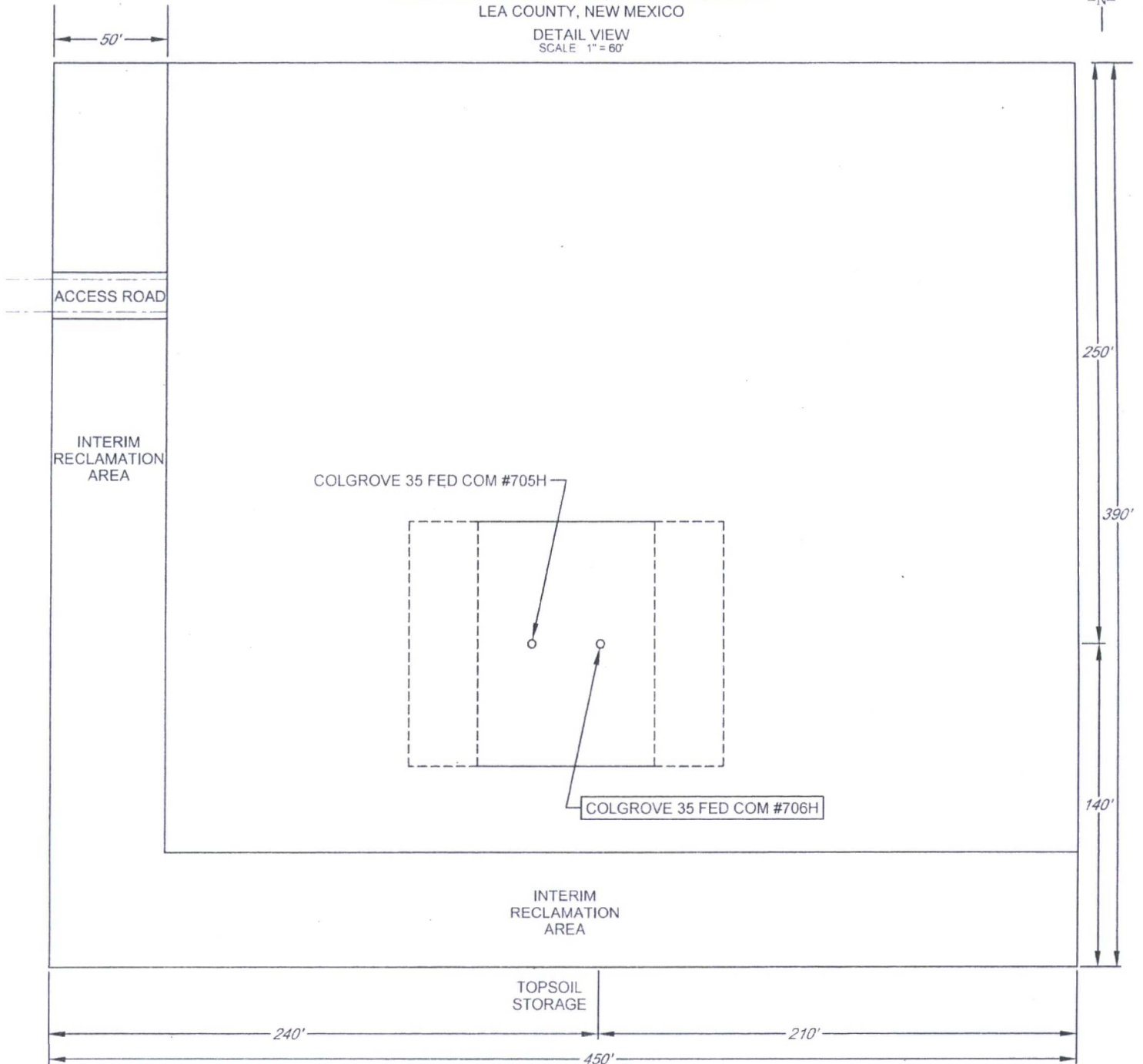
Michael Blake Brown, P.S. No. 18329
MAY 16, 2016

TOPOGRAPHIC
LOYALTY INNOVATION LEGACY
1400 EVERMAN PARKWAY, Ste. 101, F1, WORTH, TEXAS 76146
TELEPHONE: (817) 744-7312 • FAX: (817) 744-7348
2303 NORTH BIG SPRING • MIDLAND, TEXAS 79705
TELEPHONE: (432) 682-1653 OR (800) 767-1653 • FAX: (432) 682-1743
WWW.TOPOGRAPHIC.COM

EXHIBIT 2C
RECLAMATION AND FACILITY DIAGRAM - PRODUCTION FACILITIES DIAGRAM

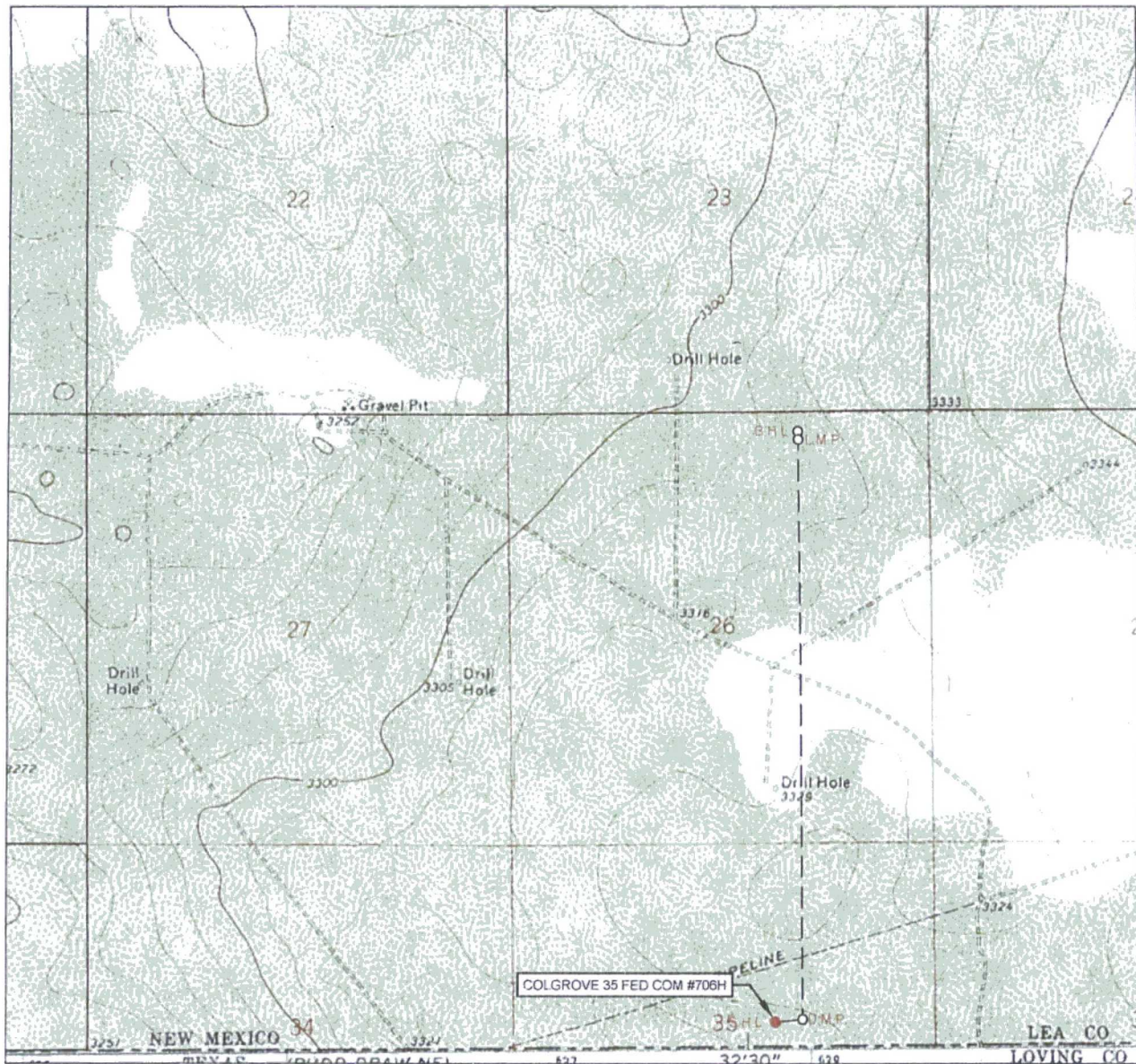
SECTION 35, TOWNSHIP 26-S, RANGE 33-E, N.M.P.M.
LEA COUNTY, NEW MEXICO

DETAIL VIEW
SCALE 1" = 60'



LEASE NAME & WELL NO.: COLGROVE 35 FED COM #706H
#706H LATITUDE N 32.0009631 #706H LONGITUDE W 103.5404636

LOCATION & ELEVATION VERIFICATION MAP



LEASE NAME & WELL NO.: COLGROVE 35 FED COM #706H

SECTION 35 TWP 26-S RGE 33-E SURVEY N.M.P.M.
 COUNTY LEA STATE NM ELEVATION 3327'
 DESCRIPTION 302' FSL & 1960' FEL

LATITUDE N 32.0009631 LONGITUDE W 103.5404636



SCALE 1" = 2000'
 0' 1000' 2000'

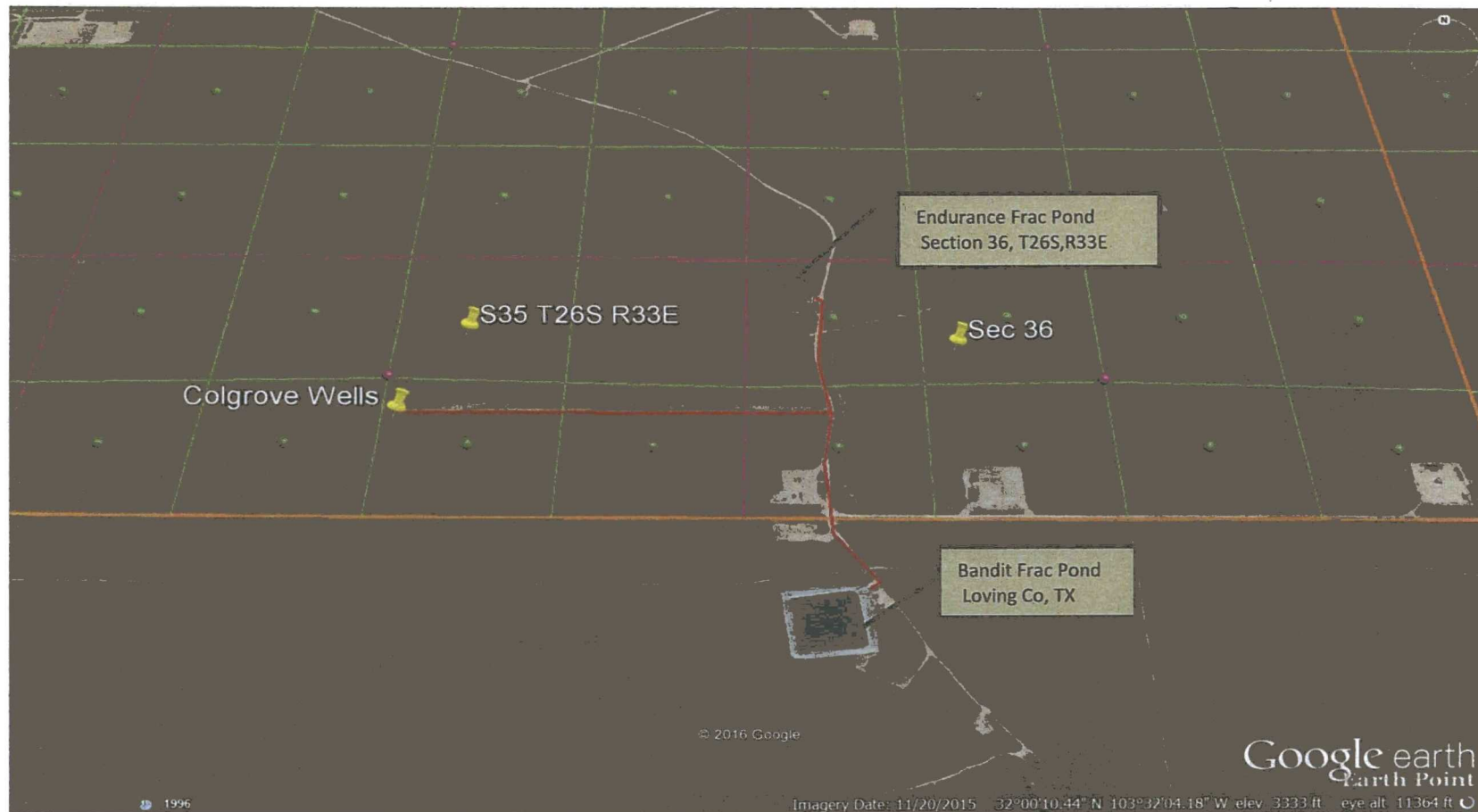
THIS EASEMENT/SERVITUDE LOCATION SHOWN HEREON HAS BEEN SURVEYED ON THE GROUND UNDER MY SUPERVISION AND PREPARED ACCORDING TO THE EVIDENCE FOUND AT THE TIME OF SURVEY, AND DATA PROVIDED BY EOG RESOURCES, INC. THIS CERTIFICATION IS MADE AND LIMITED TO THOSE PERSONS OR ENTITIES SHOWN ON THE FACE OF THIS PLAT AND IS NON TRANSFERABLE. THIS SURVEY IS CERTIFIED FOR THIS TRANSACTION ONLY.

ALL BEARINGS, DISTANCES, AND COORDINATE VALUES CONTAINED HEREON ARE GRID BASED UPON THE NEW MEXICO STATE PLANE COORDINATE SYSTEM EAST ZONE OF THE NORTH AMERICAN DATUM 1927, U.S. SURVEY FEET



TOPOGRAPHIC
 LOYALTY INNOVATION LEGACY

1400 EVERMAN PARKWAY, Ste. 197 • FT. WORTH, TEXAS 76140
 TELEPHONE: (817) 744-7512 • FAX (817) 744-7548
 2903 NORTH BIG SPRING • MIDLAND, TEXAS 79705
 TELEPHONE: (432) 682-1653 OR (800) 767-1653 • FAX (432) 682-1743
 WWW.TOPOGRAPHIC.COM



Colgrove 35 Fed Com Water Source Map

Sec 35, T26S, R35

Lea County, NM