

**PECOS DISTRICT
DRILLING OPERATIONS
CONDITIONS OF APPROVAL**

HOBBS OCD

FEB 06 2017

RECEIVED

OPERATOR'S NAME:	EOG Resources, Inc.
LEASE NO.:	NMNM108504
WELL NAME & NO.:	702H-Hound 30 Fed
SURFACE HOLE FOOTAGE:	2191'/S & 674'/W
BOTTOM HOLE FOOTAGE:	230'/S & 991'/W
LOCATION:	Section 30, T.25 S., R.34 E., NMPM
COUNTY:	Lea County, New Mexico

I. DRILLING OPERATIONS REQUIREMENTS

The BLM is to be notified in advance for a representative to witness:

- a. Spudding well (minimum of 24 hours)
- b. Setting and/or Cementing of all casing strings (minimum of 4 hours)
- c. BOPE tests (minimum of 4 hours)

☐ **Lea County**

Call the Hobbs Field Station, 414 West Taylor, Hobbs NM 88240,
(575) 3933612

1. **Although Hydrogen Sulfide has not been reported in the area with in 1 mile, it is always a potential hazard. It is recommended that monitoring equipment be onsite for potential Hydrogen Sulfide. If Hydrogen Sulfide is encountered, report measured amounts and formations to the BLM. Also Hydrogen Sulfide area must meet Onshore Order 6 requirements, which includes equipment and personnel/public protection items.**

2. Unless the production casing has been run and cemented or the well has been properly plugged, the drilling rig shall not be removed from over the hole without prior approval. **If the drilling rig is removed without approval - an Incident of Non-Compliance will be written and will be a "Major" violation.**

3. Floor controls are required for 3M or Greater systems. These controls will be on the rig floor, unobstructed, readily accessible to the driller and will be operational at all times during drilling and/or completion activities. Rig floor is defined as the area immediately around the rotary table; the area immediately above the substructure on which the draw works is located, this does not include the dog house or stairway area.

4. **The record of the drilling rate along with the GR/N well log run from TD to surface (horizontal well – vertical portion of hole) shall be submitted to the BLM office as well as all other logs run on the borehole 30 days from**

completion. If available, a digital copy of the logs is to be submitted in addition to the paper copies. The Rustler top and top and bottom of Salt are to be recorded on the Completion Report.

II. CASING

Changes to the approved APD casing program need prior approval if the items substituted are of lesser grade or different casing size or are Non-API. The Operator can exchange the components of the proposal with that of superior strength (i.e. changing from J-55 to N-80, or from 36# to 40#). Changes to the approved cement program need prior approval if the altered cement plan has less volume or strength or if the changes are substantial (i.e. Multistage tool, ECP, etc.).

The initial wellhead installed on the well will remain on the well with spools used as needed.

Wait on cement (WOC) for Water Basin:

After cementing but before commencing any tests, the casing string shall stand cemented under pressure until both of the following conditions have been met: 1) cement reaches a minimum compressive strength of 500 psi at the shoe, 2) until cement has been in place at least 8 hours. WOC time will be recorded in the driller's log. See individual casing strings for details regarding lead cement slurry requirements. DURING THIS WOC TIME, NO DRILL PIPE, ETC. SHALL BE RUN IN THE HOLE.

Provide compressive strengths including hours to reach required 500 pounds compressive strength prior to cementing each casing string. Have well specific cement details onsite prior to pumping the cement for each casing string.

No pea gravel permitted for remedial or fall back remedial without prior authorization from the BLM engineer.

Risks:

Possibility of Water Flows in the Castile and in the Salado

Possibility of Lost Circulation in the Rustler, in the Red Beds and in the Delaware
Abnormal pressures may be encountered upon penetrating the 3rd Bone Spring Sandstones and all subsequent formations.

1. The 10 3/4 inch surface casing shall be set at approximately 1100 feet (in a competent bed below the Magenta Dolomite, which is a Member of the Rustler, and if salt is encountered, set casing at least 25 feet above the salt) and cemented to the surface. Excess calculates to -33%-- additional cement shall be required.

- a. If cement does not circulate to the surface, the appropriate BLM office shall be notified and a temperature survey utilizing an electronic type

temperature survey with surface log readout will be used or a cement bond log shall be run to verify the top of the cement. Temperature survey will be run a minimum of six hours after pumping cement and ideally between 8-10 hours after completing the cement job.

b. **Wait on cement (WOC) time for a primary cement job is to include the lead cement slurry.**

c. Wait on cement (WOC) time for a remedial job will be a minimum of 4 hours after bringing cement to surface or 500 pounds compressive strength, whichever is greater.

d. If cement falls back, remedial cementing will be done prior to drilling out that string.

Formation below the 10 3/4 inch shoe to be tested according to Onshore Order 2.III.B.1.i. Test to be done as a mud equivalency test using the mud weight necessary for the pore pressure of the formation below the shoe (not the mud weight required to prevent dissolving the salt formation) and the mud weight for the bottom of the hole. Report results to BLM office.

2. The minimum required fill of cement behind the 7 5/8 inch intermediate casing is:

☐ Cement to surface. If cement does not circulate see B.1.a, c-d above.

If cement does not circulate to surface on the intermediate casing, the cement on the production casing must come to surface.

Formation below the 7 5/8 inch shoe to be tested according to Onshore Order 2.III.B.1.i. Test to be done as a mud equivalency test using the mud weight necessary for the pore pressure of the formation below the shoe (not the mud weight required to prevent dissolving the salt formation) and the mud weight for the bottom of the hole. Report results to BLM office.

3. The minimum required fill of cement behind the 5 1/2 inch production casing is:

☐ Cement should tie-back at least **200** feet into previous casing string. Operator shall provide method of verification. **Excess calculates to 18%--Additional may be required.**

4. If hardband drill pipe is rotated inside casing, returns will be monitored for metal. If metal is found in samples, drill pipe will be pulled and rubber protectors which have a larger diameter than the tool joints of the drill pipe will be installed prior to continuing drilling operations.

III. PRESSURE CONTROL

1. All blowout preventer (BOP) and related equipment (BOPE) shall comply with well control requirements as described in Onshore Oil and Gas Order No. 2 and API 53.
2. Variance approved to use flex line from BOP to choke manifold. Check condition of flexible line from BOP to choke manifold, replace if exterior is damaged or if line fails test. Line to be as straight as possible with no hard bends and is to be anchored according to Manufacturer's requirements. The flexible hose can be exchanged with a hose of equal size and equal or greater pressure rating. **Anchor requirements, specification sheet and hydrostatic pressure test certification matching the hose in service, to be onsite for review. These documents shall be posted in the company man's trailer and on the rig floor.** If the BLM inspector questions the straightness of the hose, a BLM engineer will be contacted and will review in the field or via picture supplied by inspector to determine if changes are required (operator shall expect delays if this occurs).
3. All blowout preventer (BOP) and related equipment (BOPE) shall comply with well control requirements as described in Onshore Oil and Gas Order No. 2 and API 53.
4. Operator has proposed a **multi-bowl wellhead assembly**. This assembly (BOPE/BOPE) will be tested when installed on the surface casing. Minimum working pressure of the blowout preventer (BOP) and related equipment (BOPE) required for drilling below the surface casing shoe shall be psi. **5M system requires an HCR valve, remote kill line and annular to match. The remote kill line is to be installed prior to testing the system and tested to stack pressure. (Installation of 10,000 WP Double Ram and 5000 WP Annular, only will test to a 5M system.)**
 - a. Wellhead shall be installed by manufacturer's representatives, submit documentation with subsequent sundry.
 - b. All BOP equipment will be tested utilizing a conventional test plug. Not a cup or J-packer type.
 - c. If the welding is performed by a third party, the manufacturer's representative shall monitor the temperature to verify that it does not exceed the maximum temperature of the seal.
 - d. Manufacturer representative shall install the test plug for the initial and all BOP testing.
 - e. **Prior to running the intermediated casing, the rams will be changed out to accommodate the 7-5/8" casing. After installing the intermediate casing the casing rams will be removed and replaced with variable bore rams.**

*See diagram

5. Operator has broken a seal on the BOP stack therefore per Onshore Oil and Gas Order No. 2 **the entire BOP stack shall be tested prior to drilling out the intermediated casing.**

- a. A solid steel body pack-off will be utilized after running & cementing the intermediate casing. After installation of the pack-off and lower flange will be pressure tested to 5000 psi.
 - b. If the cement does not circulate and one inch operations would have been possible with a standard wellhead, the well head shall be cut off, cementing operations performed and another wellhead installed.
6. The appropriate BLM office shall be notified a minimum of hours in advance for a representative to witness the tests.
 - a. In a water basin, for all casing strings utilizing slips, these are to be set as soon as the crew and rig are ready and any fallback cement remediation has been done. The casing cut-off and BOP installation can be initiated four hours after installing the slips, which will be approximately six hours after bumping the plug. For those casing strings not using slips, the minimum wait time before cut-off is eight hours after bumping the plug. BOP/BOPE testing can begin after cut-off or once cement reaches 500 psi compressive strength (including lead when specified), whichever is greater. However, if the float does not hold, cut-off cannot be initiated until cement reaches 500 psi compressive strength (including lead when specified).
 - b. The tests shall be done by an independent service company utilizing a test plug **not a cup or J-packer**.
 - c. The test shall be run on a 5000 psi chart for a 2-3M BOP/BOP, on a 10000 psi chart for a 5M BOP/BOPE and on a 15000 psi chart for a 10M BOP/BOPE. If a linear chart is used, it shall be a one hour chart. A circular chart shall have a maximum 2 hour clock. If a twelve hour or twenty-four hour chart is used, tester shall make a notation that it is run with a two hour clock.
 - d. The results of the test shall be reported to the appropriate BLM office.
 - e. All tests are required to be recorded on a calibrated test chart. **A copy of the BOP/BOPE test chart and a copy of independent service company test will be submitted to the appropriate BLM office.**
 - f. The BOP/BOPE test shall include a low pressure test from 250 to 300 psi. The test will be held for a minimum of 10 minutes if test is done with a test plug and 30 minutes without a test plug. This test shall be performed prior to the test at full stack pressure.

- g. BOP/BOPE must be tested by an independent service company within 500 feet of the top of the 3rd **Bone Springs** formation if the time between the setting of the intermediate casing and reaching this depth exceeds 20 days. This test does not exclude the test prior to drilling out the casing shoe as per Onshore Order No. 2

IV. **DRILLING MUD**

Mud system monitoring equipment, with derrick floor indicators and visual and audio alarms, shall be operating before drilling into the 3rd **Bone Springs** formation, and shall be used until production casing is run and cemented.

V. **DRILL STEM TEST**

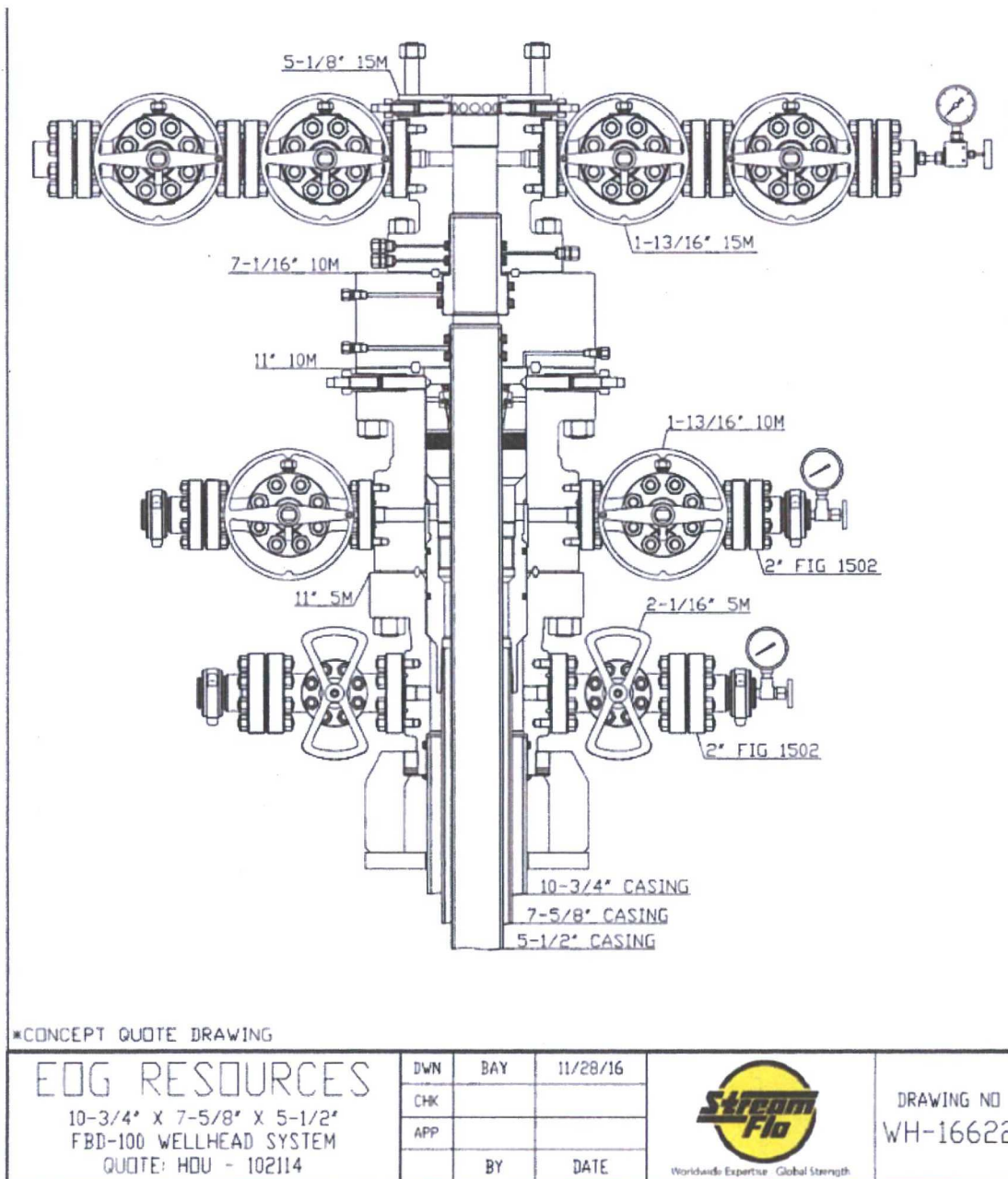
If drill stem tests are performed, Onshore Order 2.III.D shall be followed.

VI. **WASTE MATERIAL AND FLUIDS**

All waste (i.e. drilling fluids, trash, salts, chemicals, sewage, gray water, etc.) created as a result of drilling operations and completion operations shall be safely contained and disposed of properly at a waste disposal facility. No waste material or fluid shall be disposed of on the well location or surrounding area.

Porto-johns and trash containers will be on-location during fracturing operations or any other crew-intensive operations.

Operator shall use the multi bowl diagram below:



TMAK 01132017