

Office

Energy, Minerals and Natural Resources

Revised August 1, 2011

District I - (575) 393-6161

1625 N. French Dr., Hobbs, NM 88240

District II - (575) 748-1283

811 S. First St., Artesia, NM 88210

District III - (505) 334-6178

1000 Rio Brazos Rd., Aztec, NM 87417

District IV - (505) 476-3460

1220 S. St. Francis Dr., Santa Fe, NM

87505

HOBBS OCD

FEB 07 2017

RECEIVED

CONSERVATION DIVISION

1220 South St. Francis Dr.

Santa Fe, NM 87505

WELL API NO.

30-025-03914

5. Indicate Type of Lease

STATE ☒ FEE ☐

6. State Oil & Gas Lease No.

7. Lease Name or Unit Agreement Name

WEST LOVINGTON UNIT

8. Well Number: 44

9. OGRID Number

241333

10. Pool name or Wildcat

LOVINGTON UPPER SA WEST

SUNDRY NOTICES AND REPORTS ON WELLS

(DO NOT USE THIS FORM FOR PROPOSALS TO DRILL OR TO DEEPEN OR PLUG BACK TO A DIFFERENT RESERVOIR. USE "APPLICATION FOR PERMIT" (FORM C-101) FOR SUCH PROPOSALS.)

1. Type of Well: Oil Well ☒ Gas Well ☐ Other

2. Name of Operator

Chevron U.S.A. INC.

3. Address of Operator

6301 DEAUVILLE BLVD, MIDLAND, TX 79706 RM.N3002

4. Well Location

Unit Letter C : 660 feet from the NORTH line and 1980 feet from the WEST line
Section 08 Township 17S Range 36E NMPM County Lea

11. Elevation (Show whether DR, RKB, RT, GR, etc.)

12. Check Appropriate Box to Indicate Nature of Notice, Report or Other Data

NOTICE OF INTENTION TO:

PERFORM REMEDIAL WORK ☐ PLUG AND ABANDON ☒
TEMPORARILY ABANDON ☐ CHANGE PLANS ☐
PULL OR ALTER CASING ☐ MULTIPLE COMPL ☐
DOWNHOLE COMMINGLE ☐

SUBSEQUENT REPORT OF

REMEDIAL WORK ☐
COMMENCE DRILLING OPNS. ☐
CASING/CEMENT JOB ☐INT TO PA Am.x
P&A NR
P&A R OTHER: ☐OTHER: ☐

13. Describe proposed or completed operations. (Clearly state all pertinent details, and give pertinent dates, including estimated date of starting any proposed work). SEE RULE 19.15.7.14 NMAC. For Multiple Completions: Attach wellbore diagram of proposed completion or recompletion.

1. Call and notify NMOCD 24 hrs. before operations begin.
2. MIRU. NDWH. NU BOPE.
3. Set CIBP@4,630', circulate well w/9.5 ppg mud and spot 25sx of cmt. on top. Pressure test casing.
4. Perf and squeeze 45sx of Class "C" cement from 2,970'-2,770', WOC&Tag. (B.Salt)
5. Perf and squeeze 90sx of Class "C" cement from 2,068'-1,720', WOC&Tag. (Shoe/T.Salt)
6. Perf and squeeze 155sx of Class "C" cement from 250' to surface. (Shoe/FW/surface)
7. Verify cement to surface on all casings. Cut off wellhead and anchors 3' below grade. Weld on dryhole marker and clean location.

Closed loop above ground tank system will be used for fluids.

NOTIFY OCD 24 HOURS PRIOR TO
BEGINNING PLUGGING OPERATIONS

I hereby certify that the information above is true and complete to the

SIGNATURE M. Lee Roark TITLE Project Manager DATE 02/01/17Type or print name M. Lee Roark E-mail address: LRoark@Chevron.com PHONE: (432)-687-7279

For State Use Only

APPROVED BY: Manuel Brito TITLE Petroleum Engr. Specialist DATE 02/07/2017

Conditions of Approval (if any):

WIW WLU 44 WELLBORE DIAGRAM

PROPOSED

Created: 01/31/17 By: LRQS
 Updated: 01/31/17 By: LRQS
 Lease: West Lovington Unit
 Field: West Lovington
 Surf. Loc.: 660' FNL 1980' FWL
 Bot. Loc.:
 County: Lea St.: NM
 Status:

Well #: 44 St. Lse:
 API 30-025-03914-00-01
 Unit Ltr.: Section: 8
 TSHP/Rng: 17 S 36 E
 Unit Ltr.: Section:
 TSHP/Rng:
 Directions: Lovington, NM
 Chevno: FA5061

Surface Casing

Size: 13-3/8"
 Wt., Grd.: 48#
 Depth: 197'
 Sxs Cmt: 340sx
 Circulate: Yes
 TOC: Surface
 Hole Size: 16"

Intermediate Casing

Size: 8-5/8"
 Wt., Grd.: 28# & 32#
 Depth: 2018'
 Sxs Cmt: 150sx
 Circulate: No
 TOC: 1485' calc
 Hole Size: 11-1/2"

Production Casing

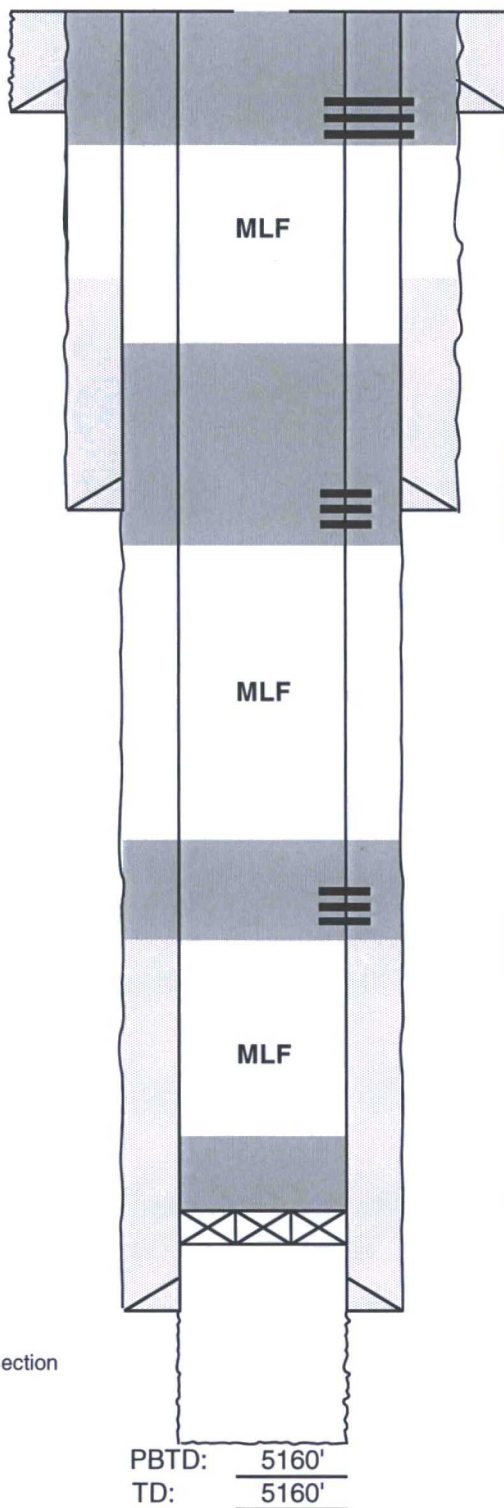
Size: 5-1/2"
 Wt., Grd.: 14#
 Depth: 4730'
 Sxs Cmt: 200sx
 Circulate: No
 TOC: 2539' calc
 Hole Size: 7"

Prod/Inj Interval

Completion: OH
 Hole Size: 4-3/4"

KB:
 DF: 3,911
 GL:

Ini. Spud: 10/10/44
 Ini. Comp.: 11/15/44



Perf and squeeze 155sx of Class "C" cement from 250'-surface. WOC&TAG. (Shoe/FW/surface)

Perf and squeeze 90sx of Class "C" cement from 2068'-1720'. WOC&TAG. (Shoe)

Perf and squeeze 45sx of Class "C" cement from 2970'-2770'. WOC&TAG. (B.Salt)

BP@4630' + 25SX

Current OH Section
 4730' - 5160'

PBTD: 5160'
 TD: 5160'

WIW WLU 44 WELLBORE DIAGRAM

CURRENT

Created: 05/03/82 By: CHW
 Updated: 12/12/16 By: MKHS
 Lease: West Lovington Unit
 Field: West Lovington
 Surf. Loc.: 660' FNL 1980' FWL
 Bot. Loc.:
 County: Lea St.: NM
 Status: Shut-In Injection Well

Well #: 44 St. Lse:
 API 30-025-03914-00-01
 Unit Ltr.: Section: 8
 TSHP/Rng: 17 S 36 E
 Unit Ltr.: Section:
 TSHP/Rng:
 Directions: Lovington, NM
 Chevno: FA5061

Surface Casing

Size: 13-3/8"
 Wt., Grd.: 48#
 Depth: 197'
 Sxs Cmt: 340sx
 Circulate: Yes
 TOC: Surface
 Hole Size: 16"

Intermediate Casing

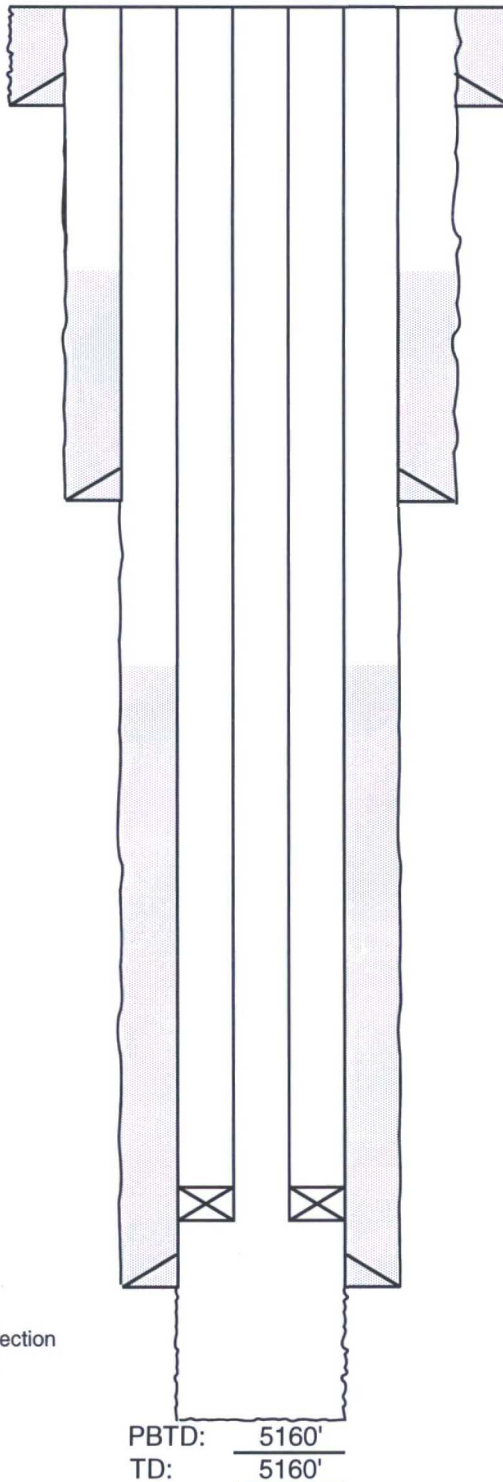
Size: 8-5/8"
 Wt., Grd.: 28# & 32#
 Depth: 2018'
 Sxs Cmt: 150sx
 Circulate: No
 TOC: 1485' calc
 Hole Size: 11-1/2"

Production Casing

Size: 5-1/2"
 Wt., Grd.: 14#
 Depth: 4730'
 Sxs Cmt: 200sx
 Circulate: No
 TOC: 2539' calc
 Hole Size: 7"

Prod/Inj Interval

Completion: OH
 Hole Size: 4-3/4"



Current OH Section
 4730' - 5160'

PBTD: 5160'
 TD: 5160'

KB:
 DF: 3,911
 GL:
 Ini. Spud: 10/10/44
 Ini. Comp.: 11/15/44

History

2-92 DO CIBP and Converted to WIW.
 DO CIBP. Spot 400 gals 20% NEFE across OH interval 4730-5160'. String shot 5105-5155', 4890-5040', and 4755-4890'. DO hard fill to 5160'. Set 5-1/2" AD1 inj pkr @ 4633' on 2-3/8" IPC tbg. Acidized with 4000 gals 20% NEFE HCl, 1000# RS in 600 gals gelled brine, and 15 tons CO2.
8-17-82 Set CIBP @ 4,637'.
 Well TA'd.
8-2-82 CO and Acidized.
 Recover fish - 2-3/8" tbg, SN, pfs & mud anchor. C/O OH f/ 4730-5160'. Spot 500 gals scale converter. Acid 1000 gals 15% NEFE acid in 2 stages using 150# RS/blk btwn stages. 0 BO & 280 BW.
9-29-71 Frac Stim.
 OH 4730-5160' with 12,000 Gals lease crude with .5#/gal 20-4- sand. IP 53 BO & 97 BW.
11-15-44 Initial Completion.
 Spud well 10-10-44. IP F 108 BO in 6 hours. GOR 852. Gravity 34.5.

Injection Equipment

2 3/8" IPC Tbg
 5 1/2" x 2 3/8" Baker AD-1 Packer
 Pkr @ 4633'