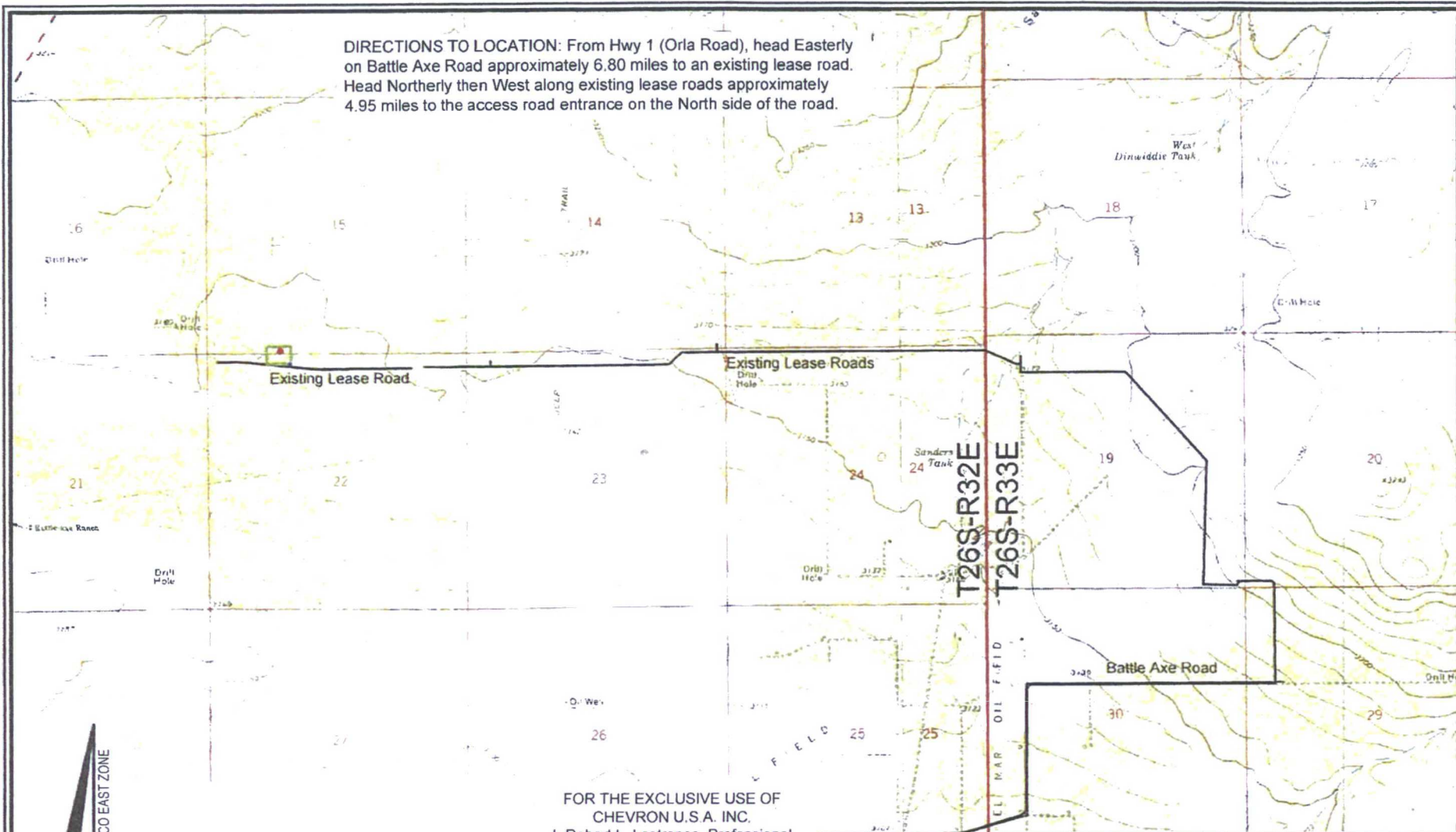


DIRECTIONS TO LOCATION: From Hwy 1 (Orla Road), head Easterly on Battle Axe Road approximately 6.80 miles to an existing lease road. Head Northerly then West along existing lease roads approximately 4.95 miles to the access road entrance on the North side of the road.



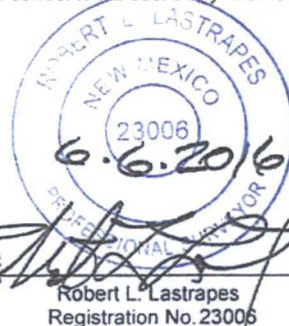
LEGEND

- Proposed Well
- Proposed Access Road
- Proposed Drillsite
- Existing Road
- Section Line

Scale: 1" = 3,000'

3,000' 0 1,500' 3,000'

FOR THE EXCLUSIVE USE OF
CHEVRON U.S.A. INC.
I, Robert L. Lastrapes, Professional
Surveyor, do hereby state this plat is true
and correct to the best of my knowledge.



VICINITY MAP

CHEVRON U.S.A. INC.
SD WE 15 FED P12 NO. 4H WELL
LOCATED 52' FSL & 1460' FWL
SECTION 15, T26S-R32E
LEA COUNTY, NEW MEXICO

DRAWN BY: KJD

REVISIONS

PROJ. MGR.: VHV

No. 1

DATE: 06/02/2016

REVISED BY: BOR

DATE: JUNE 22, 2015

No.

DATE:

REVISED BY:

FILENAME: T:\2015\2152218\DWG\SD WE 15 Fed P12 4H_APD.dwg



C. H. Fenstermaker & Associates, L.L.C.
135 Regency Sq. Lafayette, LA 70508
Ph 337-237-2200 Fax 337-232-3299
www.fenstermaker.com

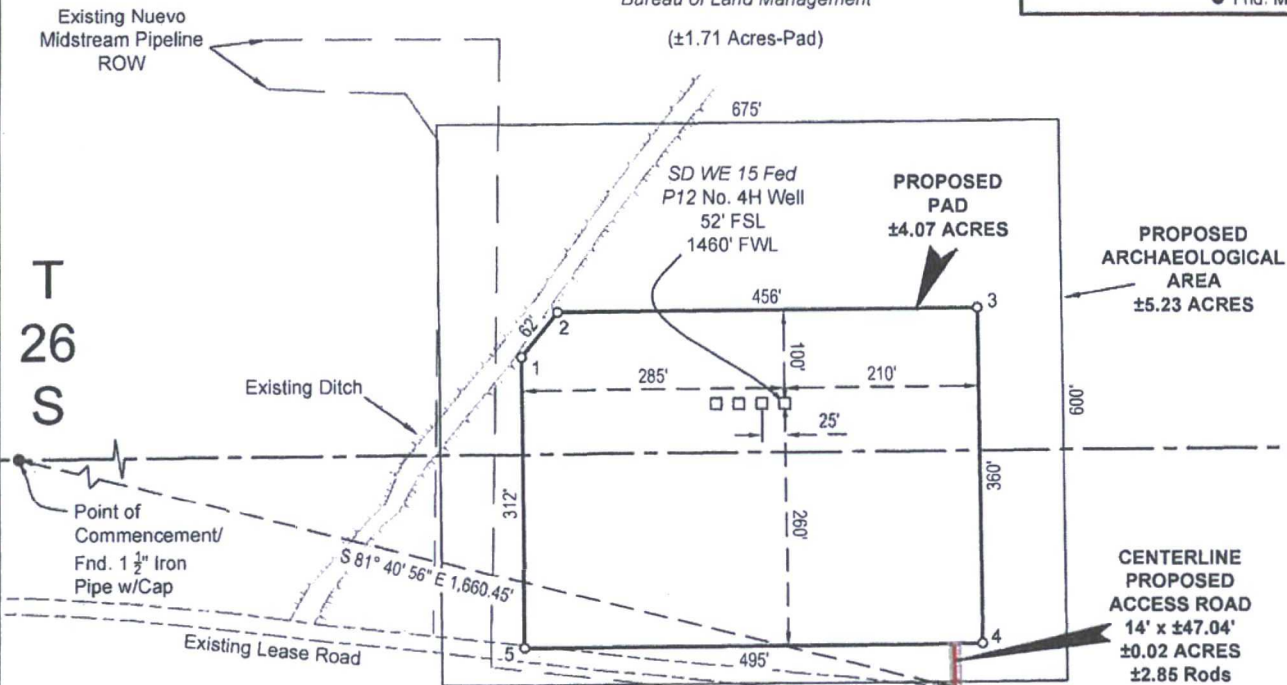
R 32 E

Sec. 15

Bureau of Land Management

(±1.71 Acres-Pad)

LEGEND	
	Section Line
	Existing ROW
	Existing Ditch
	Existing Lease Road
	Centerline Access Road
	Fnd. Monument



Sec. 22

Bureau of Land Management

(±2.36 Acres-Pad)

FOR THE EXCLUSIVE USE OF
CHEVRON U.S.A. INC.
I, Robert L. Lastrapes, Professional
Surveyor, do hereby state this plat is true
and correct to the best of my knowledge.

NW ARCH. AREA CORNER	NE ARCH. AREA CORNER
X= 706,349 NAD 27 Y= 377,611	X= 707,024 NAD 27 Y= 377,617
SE ARCH. AREA CORNER	SW ARCH. AREA CORNER
X= 707,030 NAD 27 Y= 377,017	X= 706,355 NAD 27 Y= 377,011
PAD CORNER 1	PAD CORNER 2
X= 706,441 NAD 27 Y= 377,364	X= 706,480 NAD 27 Y= 377,412
ELEVATION +3146' NAVD 88	ELEVATION +3146' NAVD 88
PAD CORNER 3	PAD CORNER 4
X= 706,935 NAD 27 Y= 377,417	X= 706,939 NAD 27 Y= 377,057
ELEVATION +3148' NAVD 88	ELEVATION +3146' NAVD 88

SD WE 15 FED P12 NO. 4H WELL	
X= 706,726 NAD 27 Y= 377,315	
LAT 32.035598 LONG. 103.666212	
X= 747,913 NAD 83 Y= 377,372	
LAT 32.035723 LONG. 103.666682	
ELEVATION +3146' NAVD 88	



Robert L. Lastrapes
Registration No. 23006

SURFACE USE PLAT

Scale: 1" = 200'

200' 0 100' 200'

CHEVRON U.S.A. INC.
PROPOSED PAD & ACCESS ROAD
SD WE 15 FED P12 NO. 4H WELL
SECTIONS 15 & 22, T26S-R32E
LEA COUNTY, NEW MEXICO

PAGE 1 OF 2



C. H. Fenstermaker & Associates, L.L.C.
135 Regency Sq. Lafayette, LA 70508
Ph 337-237-2200 Fax 337-232-3299
www.fenstermaker.com

DRAWN BY: KJD		REVISIONS	
PROJ. MGR.: VHV	No. 1	DATE: 06/02/2016	REVISED BY: BOR
DATE: JUNE 22, 2015	No.	DATE:	REVISED BY:
FILENAME: T:\2015\2152218\DWG\SD WE 15 Fed P12 4H_SUP.dwg			

DISCLAIMER: At this time, C. H. Fenstermaker & Associates, L.L.C. has not performed nor was asked to perform any type of engineering, hydrological modeling, flood plain, or "No Rise" certification analyses, including but not limited to determining whether the project will impact flood hazards in connection with federal/FEMA, state, and/or local laws, ordinances and regulations. Accordingly, Fenstermaker makes no warranty or representation of any kind as to the foregoing issues, and persons or entities using this information shall do so at their own risk.

NOTE:

Please be advised, that while reasonable efforts are made to locate and verify pipelines and anomalies using our standard pipeline locating equipment, it is impossible to be 100 % effective. As such, we advise using caution when performing work as there is a possibility that pipelines and other hazards, such as fiber optic cables, PVC pipelines, etc. may exist undetected on site.

NOTE:

Many states maintain information centers that establish links between those who dig (excavators) and those who own and operate underground facilities (operators). It is advisable and in most states, law, for the contractor to contact the center for assistance in locating and marking underground utilities. For guidance, New Mexico One Call, www.nmonecall.org

FOR THE EXCLUSIVE USE OF
CHEVRON U.S.A. INC.
I, Robert L. Lastrapes, Professional
Surveyor, do hereby state this plat is true
and correct to the best of my knowledge.

ROBERT L. LASTRAPES
NEW MEXICO
23006
6-6-2016
Robert L. Lastrapes
Registration No. 23006

SURFACE USE PLAT

CHEVRON U.S.A. INC.
PROPOSED PAD & ACCESS ROAD
SD WE 15 FED P12 NO. 4H WELL
SECTIONS 15 & 22, T26S-R32E
LEA COUNTY, NEW MEXICO

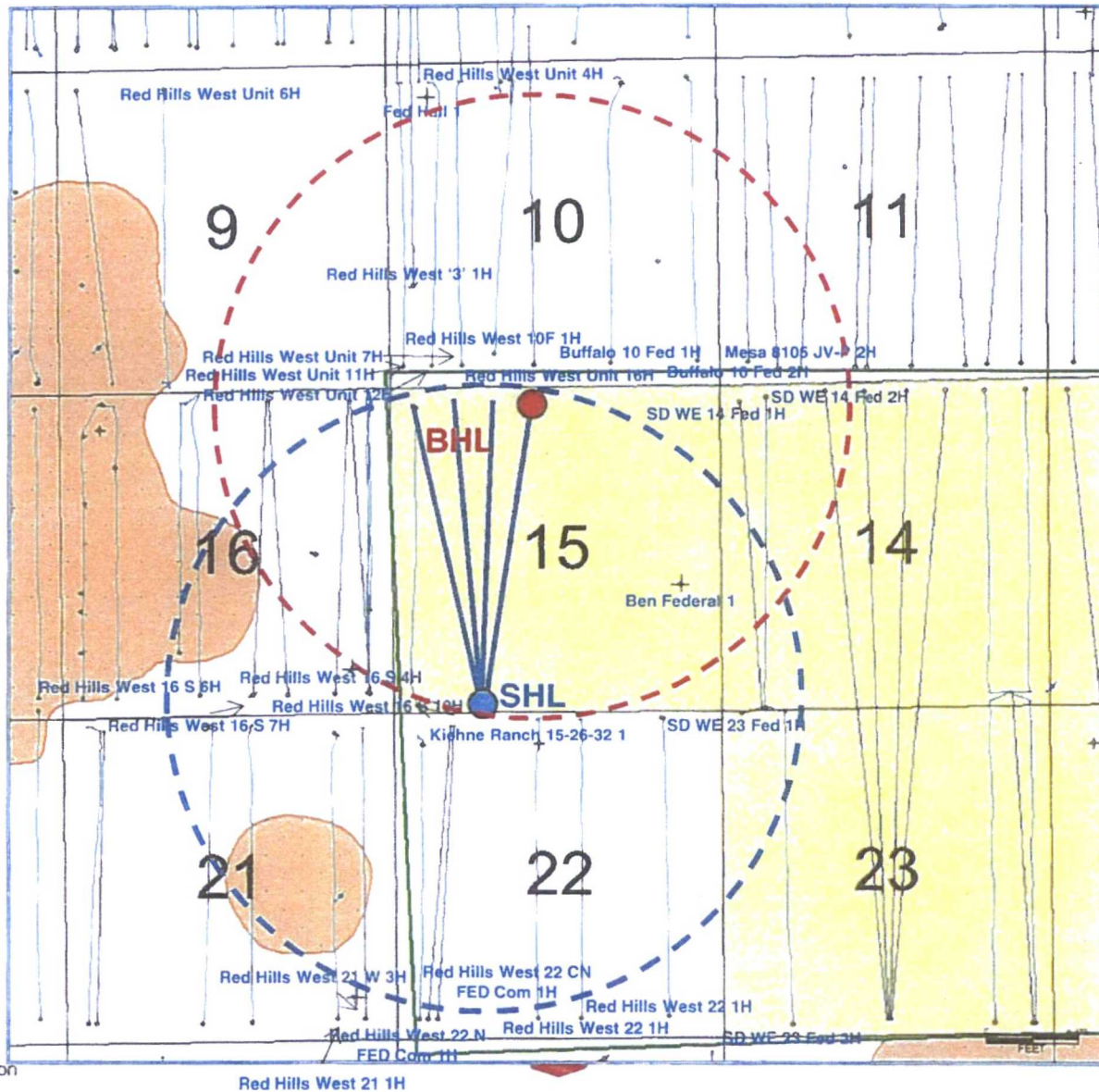
PAGE 2 OF 2



C. H. Fenstermaker & Associates, L.L.C.
135 Regency Sq. Lafayette, LA 70508
Ph 337-237-2200 Fax 337-232-3299
www.fenstermaker.com

DRAWN BY: KJD		REVISIONS	
PROJ. MGR.: VHV	No. 1	DATE: 06/02/2016	REVISED BY: BOR
DATE: JUNE 22, 2015	No.	DATE:	REVISED BY:
FILENAME: T:\2015\2152218\DWG\SD WE 15 Fed P12 4H_SUP.dwg			

SD WE 15 Fed P12 4H – Surface & Bottom Hole Location
TWN 26S RNG 32E SEC 15
1 Mile Radius



R 32 E

Sec. 15

Bureau of Land Management

Sec. 14

Bureau of Land Management

T
26
S

Proposed Pad 12 Flowline Cluster
±6014'
Proposed Pad 12 Temporary Water Line
±10,541'
Proposed Pad 9 Flowline Cluster
±4,669'
Proposed Pad 9 Temporary Water Line
±8,076'

Proposed 60' Wide
PL ROW

Existing
Battery
Pad

Existing
Compressor
Pad

Salado Draw
SWD 13 #1
Pad

Pad
7

Proposed
PL ROW

Existing
Turbine

Pad 12

Proposed 60' Wide PL ROW
(Pad 9 to Pad 12)

Pad 9

Pad 5

Proposed Expansion

Existing Lease Road

Proposed
Access
Road

Proposed
Access
Road

Existing Pad
Hills 1H Pad

Proposed
Frac
Pond

Sec. 22

Bureau of Land Management

Sec. 23

Bureau of Land Management

Sec. 24

Bureau of Land Management



Scale: 1" = 1000'

1000' 0 500' 1000'



C. H. Fenstermaker & Associates, L.L.C.
135 Regency Sq. Lafayette, LA 70508
Ph. 337-237-2200 Fax. 337-232-3269
www.fenstermaker.com

CHEVRON U.S.A. INC.

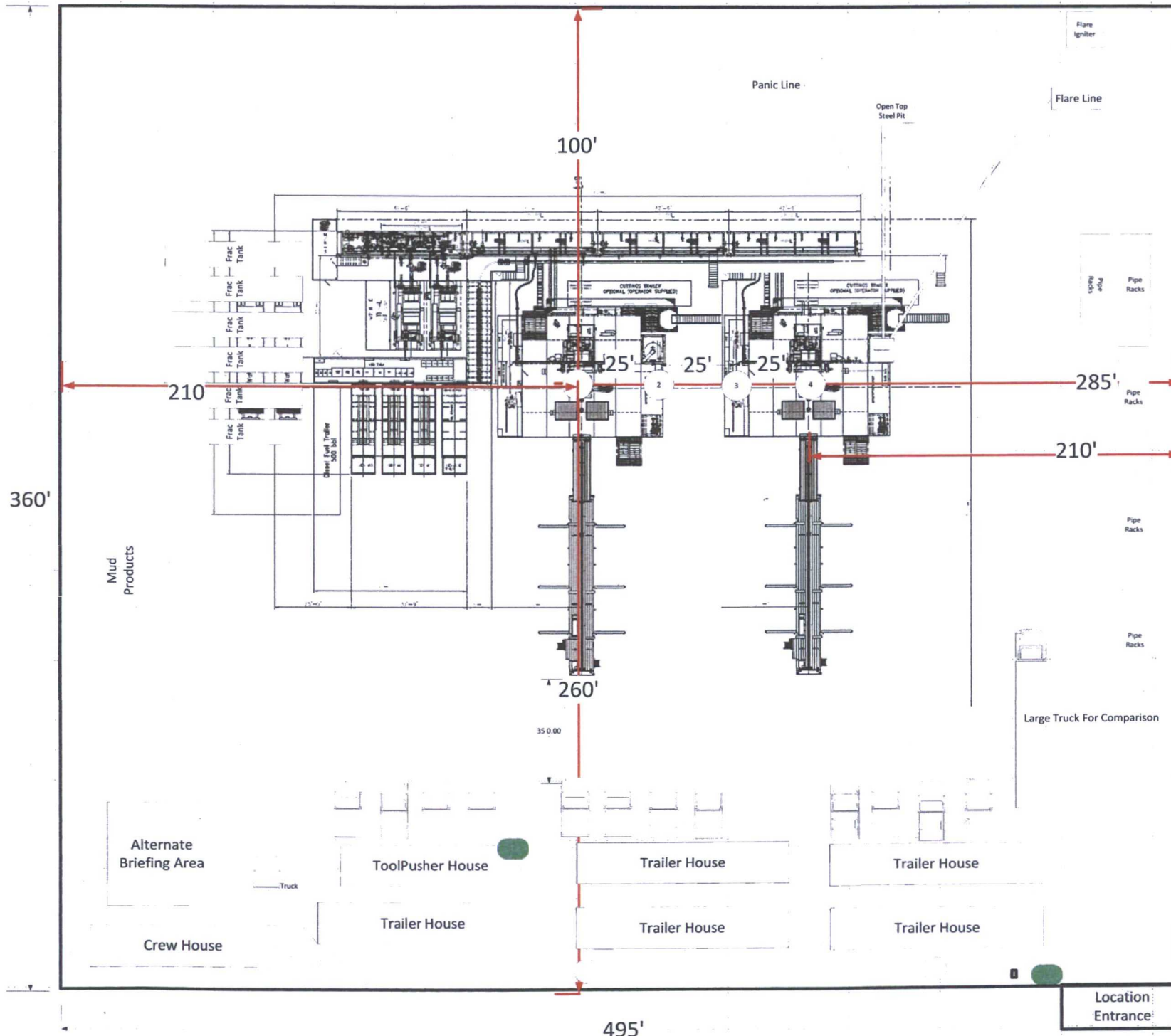
WORK AREA DETAIL FOR THE
SD WE 15 FED P9 & P12 1H-8H WELLS
SECTIONS 15, 22, 23 & 24, T26S-R32E
LEA COUNTY, NEW MEXICO

DRAWN BY: VHV		REVISIONS	
PROJ. MGR: VHV	No. #	DATE:	REVISED BY:
DATE: JULY 26, 2016	No. #	DATE:	REVISED BY:
FILENAME: T:2015\2152215\DWG\Pad 9, Pad 12 AerialDetail.dwg			

Nabors Pace X SD WE 15 Fed P12 1-4H



Rig layout shows rig in first and last well for illustration purposes.



- H2S Monitor Locations**
- Bop/Cellar
 - Rig Floor
 - Shaker Skid
 - Bell Nipple

Flag Locations

- Sign-in Shack
- Rig Floor
- Dog House

10 Minute Escape Packs

- 1 at Pits
- 1 at Trip Tank
- 1 at Accumulator
- 4 at Rig Floor

45 Minute Escape Packs

- 2 at Briefing Area
- 2 at Alternate Briefing Area

Legend

- H2S Monitor

- Flag