

FEB 20 2017

DISTRICT I

1625 N. French Dr., Hobbs, NM 88240
Phone: (575) 393-6161 Fax: (575) 393-0720

DISTRICT II

811 S. First St., Artesia, NM 88210
Phone: (575) 748-1283 Fax: (575) 748-9720

DISTRICT III

1000 Rio Brazos Road, Aztec, NM 87410
Phone: (505) 334-6178 Fax: (505) 334-6170

DISTRICT IV

1220 S. St. Francis Dr., Santa Fe, NM 87505
Phone: (505) 476-3460 Fax: (505) 476-3462

State of New Mexico
Energy, Minerals & Natural Resources Department
OIL CONSERVATION DIVISION
1220 South St. Francis Dr.
Santa Fe, New Mexico 87505

Form C-102

Revised August 1, 2011

Submit one copy to appropriate
District Office

□ AMENDED REPORT

WELL LOCATION AND ACREAGE DEDICATION PLAT

API Number 30-025- 43614	Pool Code 96553	Pool Name Ojo Chiso; Bone Spring
Property Code 313707 313707	Property Name CHISO STATE 8711 14	Well Number 3H
UGRID No. 260297	Operator Name BTA OIL PRODUCERS, LLC	Elevation 3474'

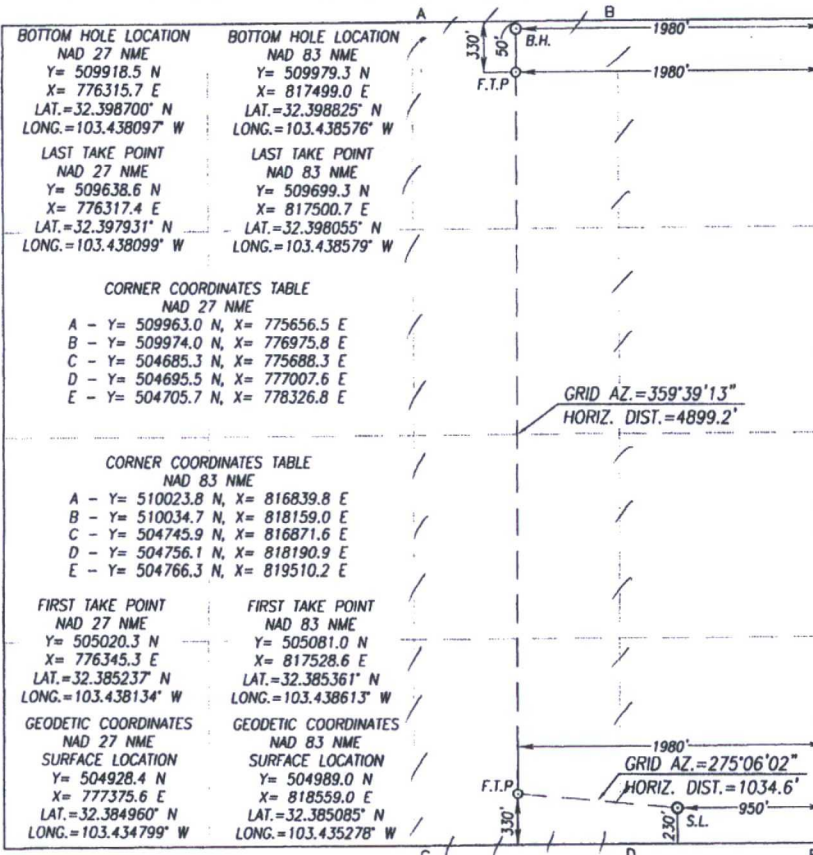
Surface Location

UL or lot No.	Section	Township	Range	Lot Idn	Feet from the	North/South line	Feet from the	East/West line	County
P	14	22-S	34-E		230	SOUTH	950	EAST	LEA

Bottom Hole Location If Different From Surface

UL or lot No.	Section	Township	Range	Lot Idn	Feet from the	North/South line	Feet from the	East/West line	County
B	14	22-S	34-E		50	NORTH	1980	EAST	LEA
Dedicated Acres 160	Joint or Infill	Consolidation Code	Order No.						

NO ALLOWABLE WILL BE ASSIGNED TO THIS COMPLETION UNTIL ALL INTERESTS HAVE BEEN CONSOLIDATED OR A NON-STANDARD UNIT HAS BEEN APPROVED BY THE DIVISION



OPERATOR CERTIFICATION

I hereby certify that the information herein is true and complete to the best of my knowledge and belief, and that this organization either owns a working interest or unleased mineral interest in the land including the proposed bottom hole location or has a right to drill this well at this location pursuant to a contract with an owner of such mineral or working interest, or to a voluntary pooling agreement or a compulsory pooling order heretofore entered by the division.

Pam Inskeep 2/14/2017
Signature Date

Pam Inskeep, Regulatory Administrator
Printed Name

pinskeep@btaoil.com
E-mail Address

SURVEYOR CERTIFICATION

I hereby certify that the well location shown on this plat was plotted from field notes of actual surveys made by me or under my supervision, and that the same is true and correct to the best of my belief.

JANUARY 26, 2017

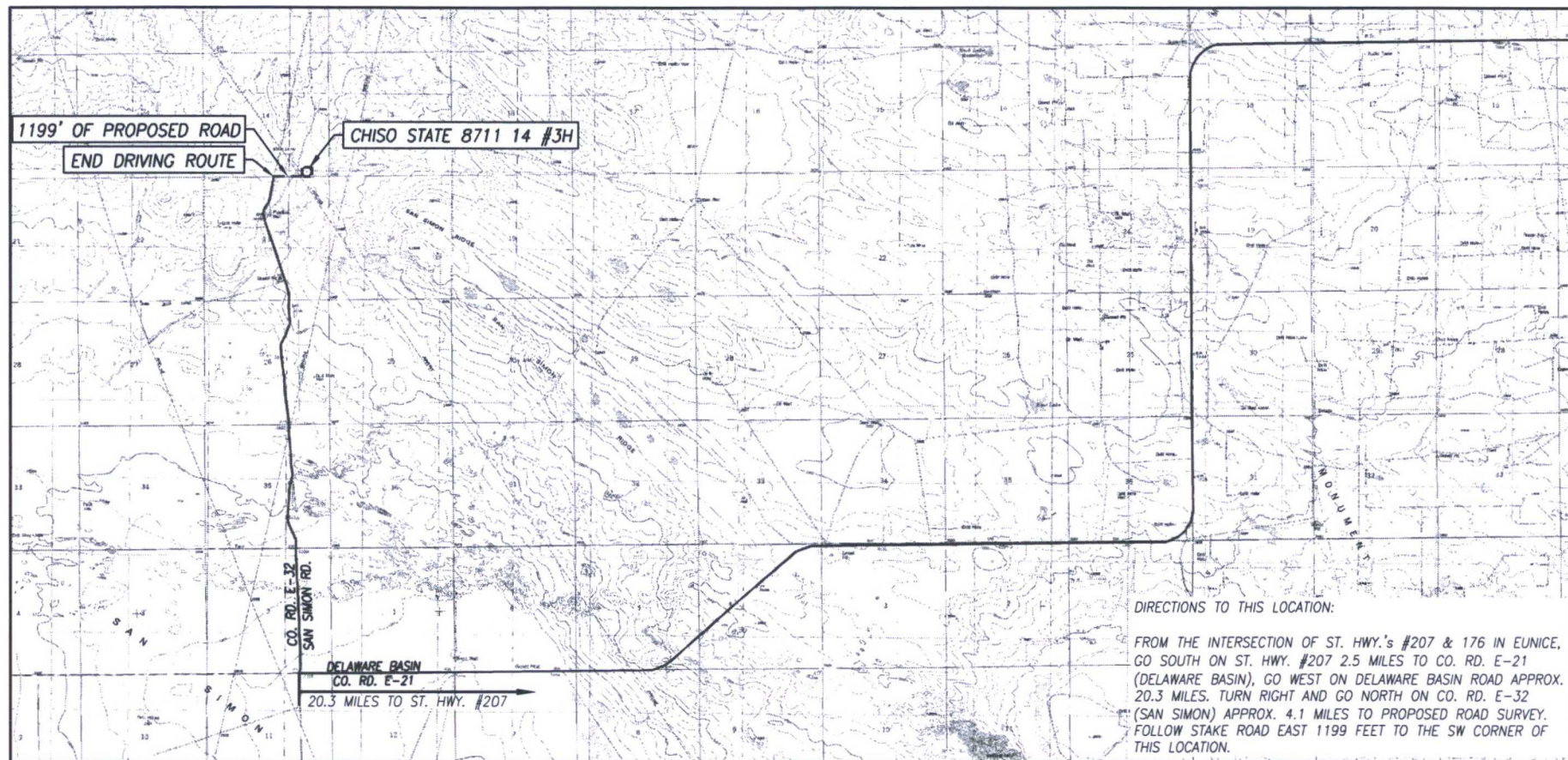
Date of Survey
Signature & Seal of Professional Surveyor:

Ronald J. Eidson 2/14/2017
Certificate Number 3239
Ronald J. Eidson 12641 3239

ACK REV.: 2/13/17

JWSC W.O.: 17.11.0057

TOPOGRAPHIC AND ACCESS ROAD MAP



DIRECTIONS TO THIS LOCATION:

FROM THE INTERSECTION OF ST. HWY.'s #207 & 176 IN EUNICE, GO SOUTH ON ST. HWY. #207 2.5 MILES TO CO. RD. E-21 (DELAWARE BASIN), GO WEST ON DELAWARE BASIN ROAD APPROX. 20.3 MILES. TURN RIGHT AND GO NORTH ON CO. RD. E-32 (SAN SIMON) APPROX. 4.1 MILES TO PROPOSED ROAD SURVEY. FOLLOW STAKE ROAD EAST 1199 FEET TO THE SW CORNER OF THIS LOCATION.

CONTOUR INTERVAL:

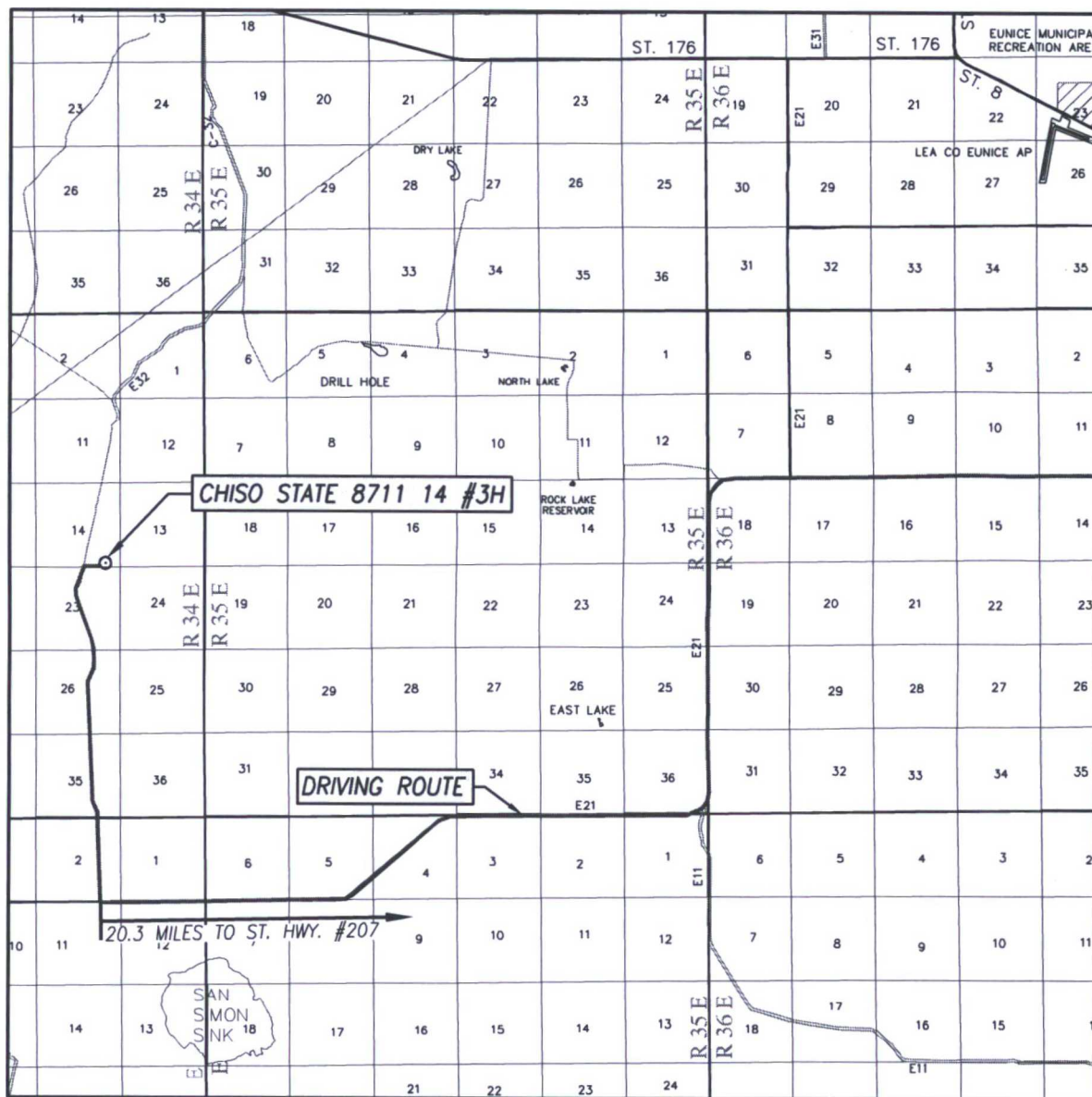
EAST LAKE, N.M. - 10' / SAN SIMON RANCH, N.M. - 10'
OIL CENTER, N.M. - 10' / SAN SIMON SINK, N.M. - 10'

SEC. 14 TWP. 22-S RGE. 34-E
COUNTY LEA STATE NEW MEXICO
DESCRIPTION 230' FSL & 950' FEL
ELEVATION 3474'
OPERATOR BTA OIL PRODUCERS, LLC
LEASE CHISO STATE 8711 14
U.S.G.S. TOPOGRAPHIC MAP
SAN SIMON SINK, N.M. SURVEY N.M.P.M.

SCALE: 1" = 1 MILE

PROVIDING SURVEYING SERVICES
SINCE 1946
JOHN WEST SURVEYING COMPANY
412 N. DAL PASO HOBBS, N.M. 88240
(575) 393-3117 www.jwsc.biz
TBPLS# 10021000

VICINITY MAP



SCALE: 1" = 2 MILES

DRIVING ROUTE: SEE TOPOGRAPHICAL AND ACCESS ROAD MAP

SEC. 14 TWP. 22-S RGE. 34-E

SURVEY N.M.P.M.


COUNTY LEA STATE NEW MEXICO

DESCRIPTION 230' FSL & 950' FEL

ELEVATION 3474'

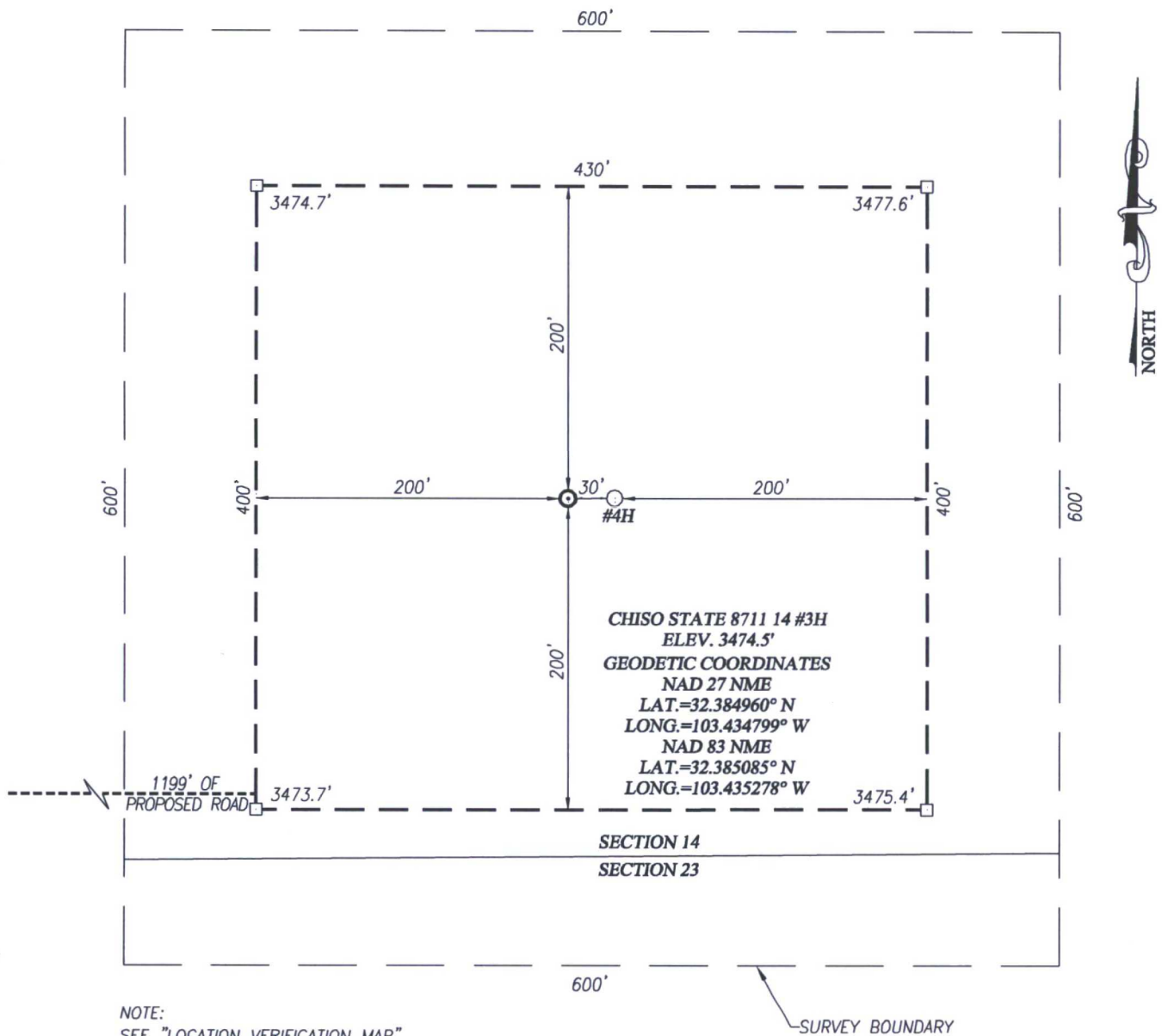
OPERATOR BTA OIL PRODUCERS, LLC

LEASE CHISO STATE 8711 14



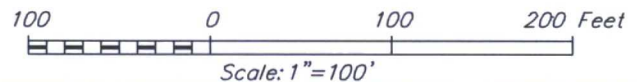
PROVIDING SURVEYING SERVICES
SINCE 1946
JOHN WEST SURVEYING COMPANY
412 N. DAL PASO HOBBS, N.M. 88240
(575) 393-3117 www.jwsc.biz
TBPLS# 10021000

WELL SITE PLAN



DIRECTIONS TO THIS LOCATION:

FROM THE INTERSECTION OF ST. HWY.'s #207 & 176 IN EUNICE,
GO SOUTH ON ST. HWY. #207 2.5 MILES TO CO. RD. E-21
(DELAWARE BASIN), GO WEST ON DELAWARE BASIN ROAD APPROX.
20.3 MILES. TURN RIGHT AND GO NORTH ON CO. RD. E-32
(SAN SIMON) APPROX. 4.1 MILES TO PROPOSED ROAD SURVEY.
FOLLOW STAKE ROAD EAST 1199 FEET TO THE SW CORNER OF
THIS LOCATION.



BTA OIL PRODUCERS, LLC

CHISO STATE 8711 14 #3H WELL
LOCATED 230 FEET FROM THE SOUTH LINE
AND 950 FEET FROM THE EAST LINE OF SECTION 14,
TOWNSHIP 22 SOUTH, RANGE 34 EAST, N.M.P.M.,
LEA COUNTY, NEW MEXICO

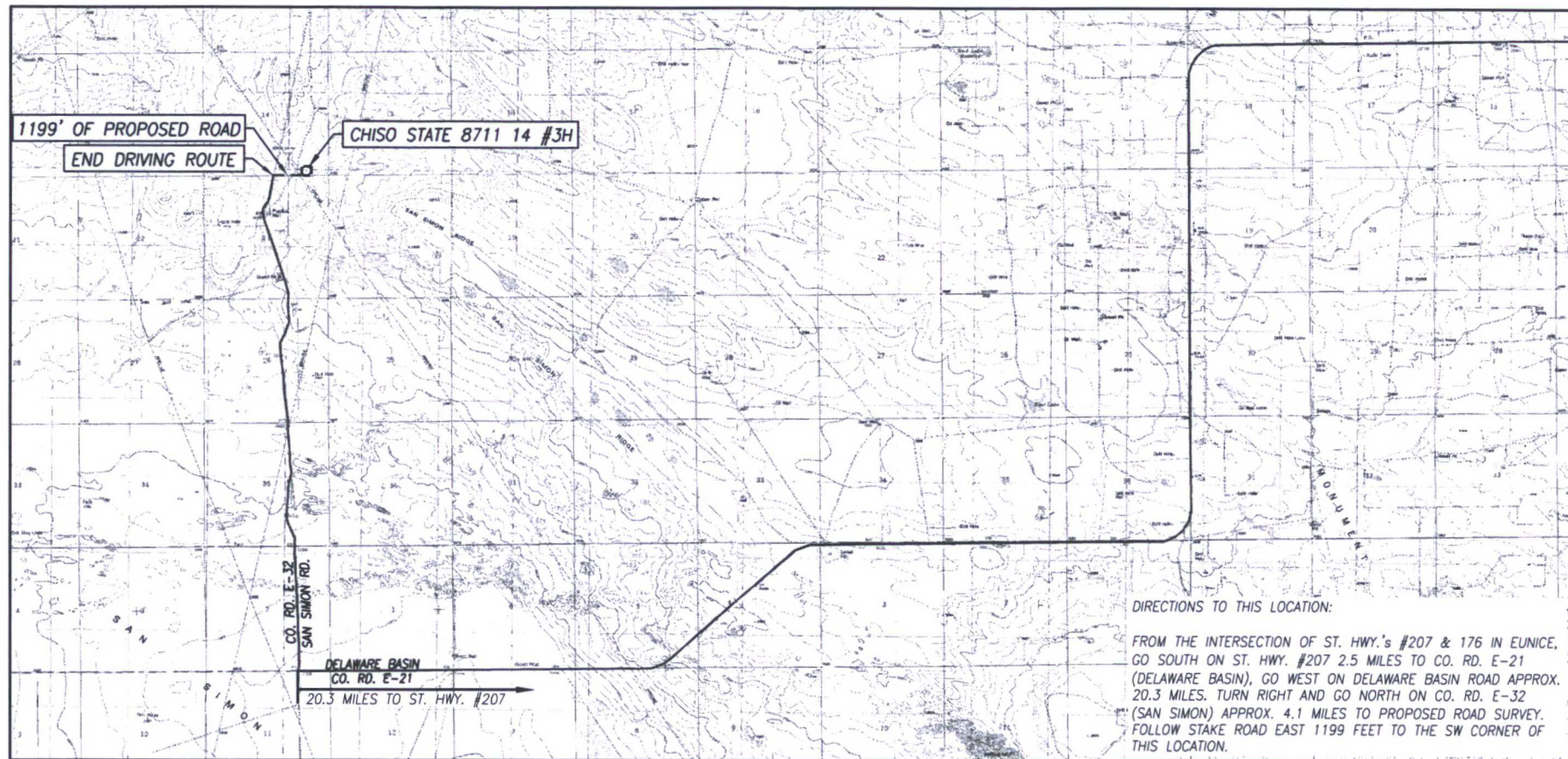


PROVIDING SURVEYING SERVICES
SINCE 1946
JOHN WEST SURVEYING COMPANY
412 N. DAL PASO HOBBS, N.M. 88240
(575) 393-3117 www.jwsc.biz
TBPLS# 10021000

Survey Date: 1/26/17	CAD Date: 2/06/17	Drawn By: ACK
W.O. No.: 17110057	Rev: 2/13/17	Rel. W.O.:

Sheet 1 of 1

TOPOGRAPHIC AND ACCESS ROAD MAP



DIRECTIONS TO THIS LOCATION:

FROM THE INTERSECTION OF ST. HWY.'s #207 & 176 IN EUNICE, GO SOUTH ON ST. HWY. #207 2.5 MILES TO CO. RD. E-21 (DELAWARE BASIN), GO WEST ON DELAWARE BASIN ROAD APPROX. 20.3 MILES. TURN RIGHT AND GO NORTH ON CO. RD. E-32 (SAN SIMON) APPROX. 4.1 MILES TO PROPOSED ROAD SURVEY. FOLLOW STAKE ROAD EAST 1199 FEET TO THE SW CORNER OF THIS LOCATION.

SEC. 14 TWP. 22-S. RGE. 34-E
 COUNTY LEA STATE NEW MEXICO
 DESCRIPTION 230' FSL & 950' FEL
 ELEVATION 3474'
 OPERATOR BTA OIL PRODUCERS, LLC
 LEASE CHISO STATE 8711 14
 U.S.G.S. TOPOGRAPHIC MAP
 SAN SIMON SINK, N.M. SURVEY N.M.P.M.

SCALE: 1" = 1 MILE

CONTOUR INTERVAL:

EAST LAKE, N.M. - 10' / SAN SIMON RANCH, N.M. - 10'
 OIL CENTER, N.M. - 10' / SAN SIMON SINK, N.M. - 10'

PROVIDING SURVEYING SERVICES
 SINCE 1946
JOHN WEST SURVEYING COMPANY
 412 N. DAL PASO HOBBS, N.M. 88240
 (575) 393-3117 www.jwsc.biz
 TBPLS# 10021000

VICINITY MAP



SCALE: 1" = 2 MILES

DRIVING ROUTE: SEE TOPOGRAPHICAL AND ACCESS ROAD MAP

SEC. 14 TWP. 22-S RGE. 34-E

SURVEY N.M.P.M.

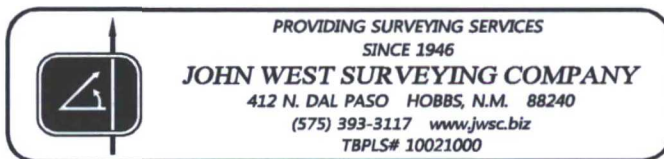
COUNTY LEA STATE NEW MEXICO

DESCRIPTION 230' FSL & 950' FEL

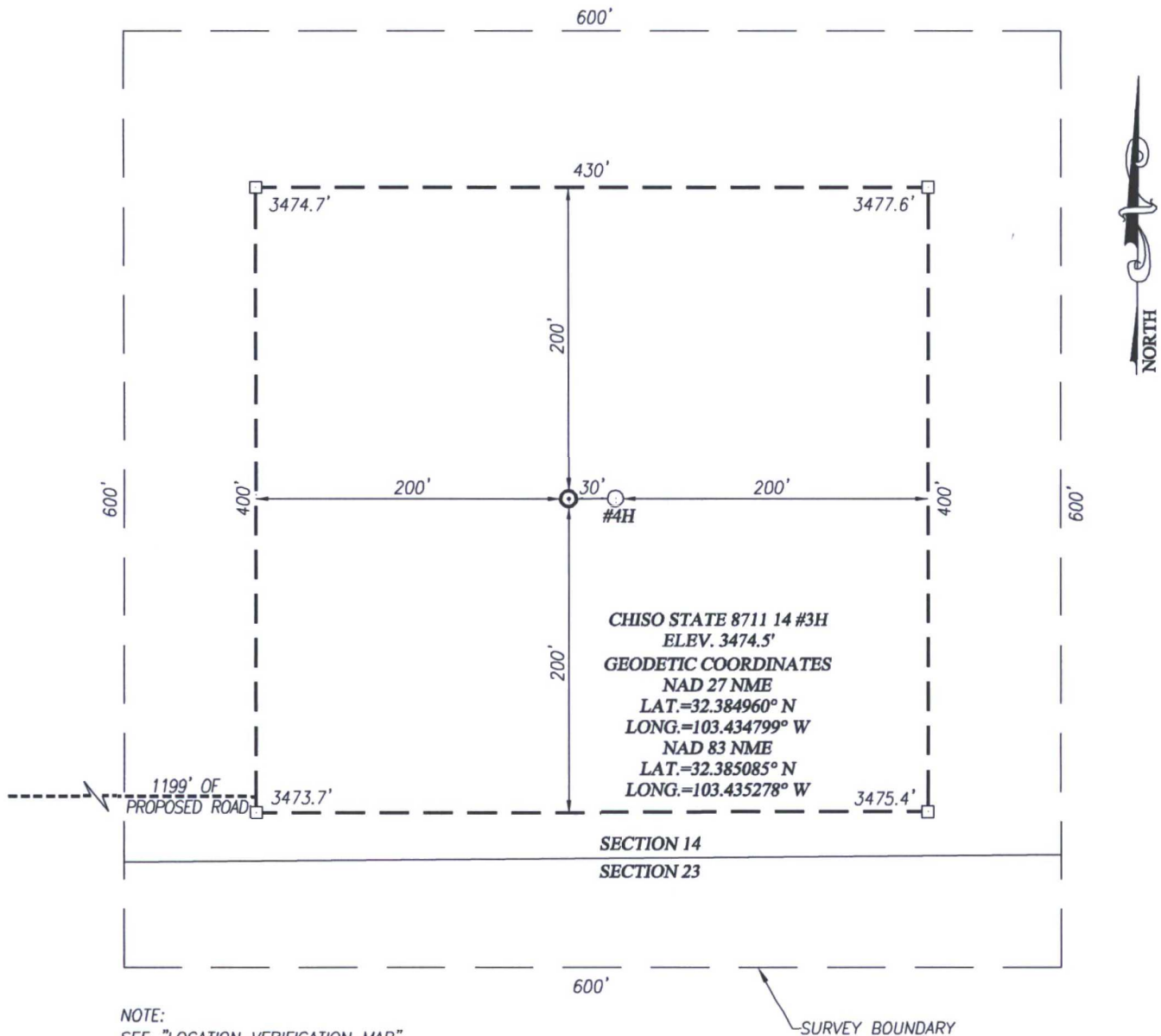
ELEVATION 3474'

OPERATOR BTA OIL PRODUCERS, LLC

LEASE CHISO STATE 8711 14

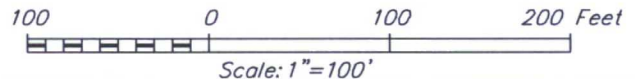


WELL SITE PLAN



DIRECTIONS TO THIS LOCATION:

FROM THE INTERSECTION OF ST. HWY.'s #207 & 176 IN EUNICE,
GO SOUTH ON ST. HWY. #207 2.5 MILES TO CO. RD. E-21
(DELAWARE BASIN), GO WEST ON DELAWARE BASIN ROAD APPROX.
20.3 MILES. TURN RIGHT AND GO NORTH ON CO. RD. E-32
(SAN SIMON) APPROX. 4.1 MILES TO PROPOSED ROAD SURVEY.
FOLLOW STAKE ROAD EAST 1199 FEET TO THE SW CORNER OF
THIS LOCATION.



BTA OIL PRODUCERS, LLC

CHISO STATE 8711 14 #3H WELL
LOCATED 230 FEET FROM THE SOUTH LINE
AND 950 FEET FROM THE EAST LINE OF SECTION 14,
TOWNSHIP 22 SOUTH, RANGE 34 EAST, N.M.P.M.,
LEA COUNTY, NEW MEXICO



PROVIDING SURVEYING SERVICES
SINCE 1946
JOHN WEST SURVEYING COMPANY
412 N. DAL PASO HOBBS, N.M. 88240
(575) 393-3117 www.jwsc.biz
TBPLS# 10021000

Survey Date: 1/26/17	CAD Date: 2/06/17	Drawn By: ACK
W.O. No.: 17110057	Rev: 2/13/17	Rel. W.O.:
		Sheet 1 of 1