

District I
1625 N. French Dr., Hobbs, NM 88240
Phone: (575) 393-6161 Fax: (575) 393-0720
District II
811 S. First St., Artesia, NM 88210
Phone: (575) 748-1283 Fax: (575) 748-9720
District III
1000 Rio Brazos Road, Aztec, NM 87410
Phone: (505) 334-6178 Fax: (505) 334-6170
District IV
1220 S. St. Francis Dr., Santa Fe, NM 87505
Phone: (505) 476-3460 Fax: (505) 476-3462

State of New Mexico
Energy, Minerals & Natural Resources Department
OIL CONSERVATION DIVISION
1220 South St. Francis Dr.
Santa Fe, NM 87505

Form C-102
Revised August 1, 2011
Submit one copy to appropriate
District Office

☐ AMENDED REPORT

WELL LOCATION AND ACREAGE DEDICATION PLAT

¹ API Number 30-025-43619	² Pool Code 28435	³ Pool Name GRAMA RIDGE; BS, NE
⁴ Property Code 317441	⁵ Property Name GRAMA RIDGE STATE COM	⁶ Well Number 8H
⁷ OGRID No. 37127	⁸ Operator Name BLACK MOUNTAIN OPERATING, LLC	⁹ Elevation 3572'

¹⁰ Surface Location

UL or lot no.	Section	Township	Range	Lot Idn	Feet from the	North/South line	Feet from the	East/West line	County
P	2	22 SOUTH	34 EAST, N.M.P.M.		150'	SOUTH	728'	EAST	LEA

¹¹ Bottom Hole Location If Different From Surface

UL or lot no.	Section	Township	Range	Lot Idn	Feet from the	North/South line	Feet from the	East/West line	County
A	35	21 SOUTH	34 EAST, N.M.P.M.		330'	NORTH	384'	EAST	LEA

¹² Dedicated Acres	¹³ Joint or Infill	¹⁴ Consolidation Code	¹⁵ Order No.

No allowable will be assigned to this completion until all interests have been consolidated or a non-standard unit has been approved by the division.

<p>¹⁶</p> <table><tr><td>PROPOSED BOTTOM HOLE LOCATION</td></tr><tr><td>X= 777,804 NAD 27</td></tr><tr><td>Y= 525,575</td></tr><tr><td>LAT. 32.441699</td></tr><tr><td>LONG. 103.432848</td></tr><tr><td>X= 818,987 NAD83</td></tr><tr><td>Y= 525,636</td></tr><tr><td>LAT. 32.441824</td></tr><tr><td>LONG. 103.433328</td></tr></table> <table><tr><td>GRAMA RIDGE STATE COM 8H WELL</td></tr><tr><td>X= 777,534 NAD 27</td></tr><tr><td>Y= 515,410</td></tr><tr><td>LAT. 32.413765</td></tr><tr><td>LONG. 103.434002</td></tr><tr><td>X= 818,717 NAD83</td></tr><tr><td>Y= 515,471</td></tr><tr><td>LAT. 32.413889</td></tr><tr><td>LONG. 103.434481</td></tr><tr><td>ELEVATION +3572 NAVD 88</td></tr></table> <p>CORNER COORDINATES TABLE (NAD 27)</p> <p>A - Y=525879.00, X=775546.76 B - Y=525909.52, X=778185.30 C - Y=515244.04, X=775624.49 D - Y=515265.47, X=778262.61</p>	PROPOSED BOTTOM HOLE LOCATION	X= 777,804 NAD 27	Y= 525,575	LAT. 32.441699	LONG. 103.432848	X= 818,987 NAD83	Y= 525,636	LAT. 32.441824	LONG. 103.433328	GRAMA RIDGE STATE COM 8H WELL	X= 777,534 NAD 27	Y= 515,410	LAT. 32.413765	LONG. 103.434002	X= 818,717 NAD83	Y= 515,471	LAT. 32.413889	LONG. 103.434481	ELEVATION +3572 NAVD 88	<p>330'</p> <p>384'</p> <p>35</p> <p>2</p> <p>Proposed Producing Interval</p> <p>T21S-R34E</p> <p>T22S-R34E</p> <p>Proposed Penetration Point</p> <p>330' FSL, 351.6' FEL</p> <p>N 64°00'11" E 417.63'</p> <p>728'</p> <p>150'</p> <p>N 00°36'07" W 9,983.03'</p>	<p>¹⁷ OPERATOR CERTIFICATION</p> <p>I hereby certify that the information contained herein is true and complete to the best of my knowledge and belief, and that this organization either owns a working interest or unleased mineral interest in the land including the proposed bottom hole location or has a right to drill this well at this location pursuant to a contract with an owner of such a mineral or working interest, or to a voluntary pooling agreement or a compulsory pooling order heretofore entered by the division.</p> <p><i>Denise L. White</i> 2-17-2017 Signature Date</p> <p>Denise L. White Printed Name</p> <p>denise.white@blackmtm.com E-mail Address</p> <p>¹⁸ SURVEYOR CERTIFICATION</p> <p>I hereby certify that the well location shown on this plat was plotted from field notes of actual surveys made by me or under my supervision, and that the same is true and correct to the best of my belief.</p> <p>2-10-2017 Date of Survey</p> <p>Signature and Seal of Professional Surveyor: <i>Robert L. Lastrapes</i></p> <p>23006 Certificate Number</p>
PROPOSED BOTTOM HOLE LOCATION																					
X= 777,804 NAD 27																					
Y= 525,575																					
LAT. 32.441699																					
LONG. 103.432848																					
X= 818,987 NAD83																					
Y= 525,636																					
LAT. 32.441824																					
LONG. 103.433328																					
GRAMA RIDGE STATE COM 8H WELL																					
X= 777,534 NAD 27																					
Y= 515,410																					
LAT. 32.413765																					
LONG. 103.434002																					
X= 818,717 NAD83																					
Y= 515,471																					
LAT. 32.413889																					
LONG. 103.434481																					
ELEVATION +3572 NAVD 88																					

GRAMA RIDGE STATE COM NO. 8H WELL	NW PAD CORNER	NE PAD CORNER
X= 777,534 NAD 27	X= 777,307 NAD 27	X= 777,757 NAD 27
Y= 515,410	Y= 515,608	Y= 515,611
LAT. 32.413765	ELEVATION +3575' NAVD 88	ELEVATION +3575' NAVD 88
LONG. 103.434002	SW PAD CORNER	SE PAD CORNER
X= 818,717 NAD 83	X= 777,310 NAD 27	X= 777,760 NAD 27
Y= 515,471	Y= 515,258	Y= 515,261
LAT. 32.413889	ELEVATION +3570' NAVD 88	ELEVATION +3572' NAVD 88
LONG. 103.434481		
ELEVATION +3572' NAVD 88		

R 34 E

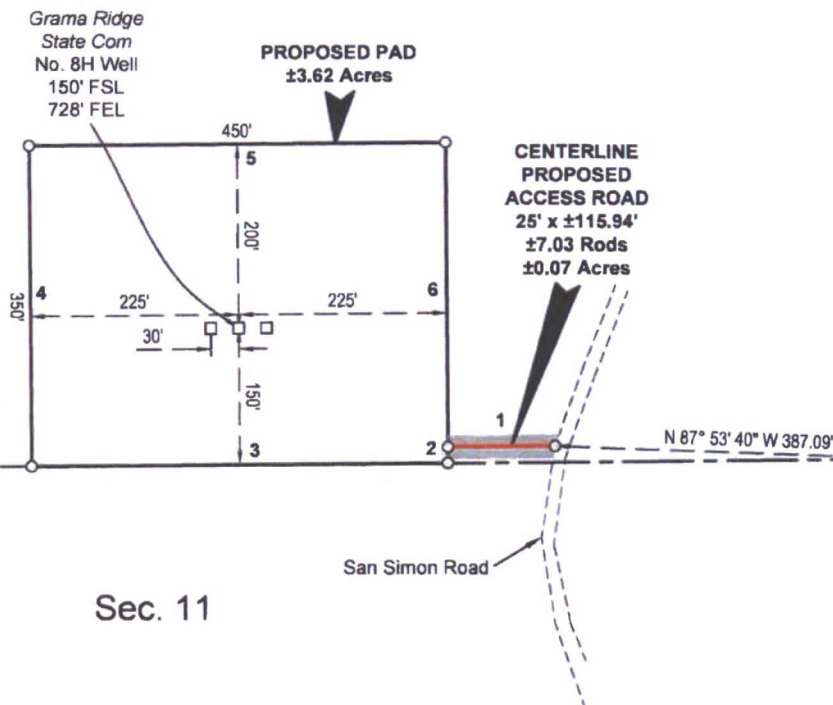
Sec. 2

Merchant Livestock

Sec. 1

Sec. 12

Sec. 11



NAD 27 NEW MEXICO EAST ZONE

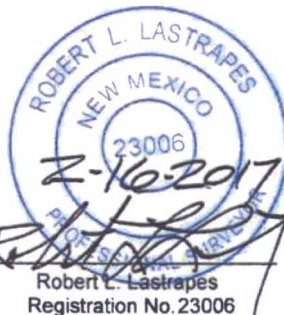
LEGEND	
	Centerline Access
	Proposed Pad
	Existing Road
	Section Line
	Fnd. Monument



Scale: 1" = 200'

200' 0 100' 200'

FOR THE EXCLUSIVE USE OF
BLACK MOUNTAIN OPERATING, LLC
I, Robert L. Lastrapes, Professional
Surveyor, do hereby state this plat is true
and correct to the best of my knowledge.



SURFACE USE PLAT

Page 1 of 2

BLACK MOUNTAIN OPERATING, LLC

PROPOSED PAD & ACCESS ROAD
GRAMA RIDGE STATE COM NO. 8H WELL
SECTION 2, T22S-R34E
LEA COUNTY, NEW MEXICO

DRAWN BY: BOR

REVISIONS

PROJ. MGR.: VHV

No.

DATE:

REVISED BY:

DATE: 02/14/2017

No.

DATE:

REVISED BY:

FILENAME: T:\2017\2175220\DWG\Grama Ridge State Com 8H_SUP.dwg



C. H. Fenstermaker & Associates, L.L.C.
135 Regency Sq. Lafayette, LA 70508
Ph. 337-237-2200 Fax. 337-232-3299
www.fenstermaker.com

NOTE:

Please be advised, that while reasonable efforts are made to locate and verify pipelines and anomalies using our standard pipeline locating equipment, it is impossible to be 100 % effective. As such, we advise using caution when performing work as there is a possibility that pipelines and other hazards, such as fiber optic cables, PVC pipelines, etc. may exist undetected on site.

NOTE:

Many states maintain information centers that establish links between those who dig (excavators) and those who own and operate underground facilities (operators). It is advisable and in most states, law, for the contractor to contact the center for assistance in locating and marking underground utilities. For guidance: New Mexico One Call - www.nmonecall.org

DISCLAIMER: At this time, C. H. Fenstermaker & Associates, L.L.C. has not performed nor was asked to perform any type of engineering, hydrological modeling, flood plain, or "No Rise" certification analyses, including but not limited to determining whether the project will impact flood hazards in connection with federal/FEMA, state, and/or local laws, ordinances and regulations. Accordingly, Fenstermaker makes no warranty or representation of any kind as to the foregoing issues, and persons or entities using this information shall do so at their own risk.

FOR THE EXCLUSIVE USE OF
BLACK MOUNTAIN OPERATING, LLC
I, Robert L. Lastrapes, Professional
Surveyor, do hereby state this plat is true
and correct to the best of my knowledge.



CENTERLINE PROPOSED ACCESS ROAD		
COURSE	BEARING	DISTANCE
1	S 89° 32' 04" W	115.94'

PROPOSED PAD		
COURSE	BEARING	DISTANCE
2	S 00° 27' 56" E	17.50'
3	S 89° 32' 04" W	450.00'
4	N 00° 27' 56" W	350.00'
5	N 89° 32' 04" E	450.00'
6	S 00° 27' 56" E	332.50'

SURFACE USE PLAT

Page 2 of 2

BLACK MOUNTAIN OPERATING, LLC

PROPOSED PAD & ACCESS ROAD
GRAMA RIDGE STATE COM NO. 8H WELL
SECTION 2, T22S-R34E
LEA COUNTY, NEW MEXICO

DRAWN BY: BOR

REVISIONS

PROJ. MGR.: VHV

No.

DATE:

REVISED BY:

DATE: 02/14/2017

No.

DATE:

REVISED BY:

FILENAME: T:\2017\2175220\DWG\Grama Ridge State Com 8H_SUP.dwg



C. H. Fenstermaker & Associates, L.L.C.
135 Regency Sq. Lafayette, LA 70508
Ph. 337-237-2200 Fax. 337-232-3299
www.fenstermaker.com