

District I  
1625 N. French Dr., Hobbs, NM 88240  
Phone: (575) 393-6161 Fax: (575) 393-0720  
District II  
811 S. First St., Artesia, NM 88210  
Phone: (575) 748-1283 Fax: (575) 748-9720  
District III  
1000 Rio Brazos Road, Aztec, NM 87410  
Phone: (505) 334-6178 Fax: (505) 334-6170  
District IV  
1220 S. St. Francis Dr., Santa Fe, NM 87505  
Phone: (505) 476-3460 Fax: (505) 476-3462

State of New Mexico  
Energy, Minerals & Natural Resources Department  
**OIL CONSERVATION DIVISION**  
1220 South St. Francis Dr.  
Santa Fe, NM 87505

Form C-102  
Revised August 1, 2011  
Submit one copy to appropriate  
District Office  
☐ AMENDED REPORT

**WELL LOCATION AND ACREAGE DEDICATION PLAT**

<sup>1</sup> API Number <b>30-024-43620</b>	<sup>2</sup> Pool Code <b>28435</b>	<sup>3</sup> Pool Name <b>GRAMA RIDGE; BS, NE</b>
<sup>4</sup> Property Code <b>317441</b>	<sup>5</sup> Property Name <b>GRAMA RIDGE STATE COM</b>	
<sup>7</sup> OGRID No. <b>37127</b>	<sup>8</sup> Operator Name <b>BLACK MOUNTAIN OPERATING, LLC</b>	
		<sup>6</sup> Well Number <b>13H</b>
		<sup>9</sup> Elevation <b>3572'</b>

**<sup>10</sup> Surface Location**

UL or lot no.	Section	Township	Range	Lot Idn	Feet from the	North/South line	Feet from the	East/West line	County
O	2	22 SOUTH	34 EAST, N.M.P.M.		150'	SOUTH	2335'	EAST	LEA

**<sup>11</sup> Bottom Hole Location If Different From Surface**

UL or lot no.	Section	Township	Range	Lot Idn	Feet from the	North/South line	Feet from the	East/West line	County
B	35	21 SOUTH	34 EAST, N.M.P.M.		330'	NORTH	1744'	EAST	LEA

<sup>12</sup> Dedicated Acres	<sup>13</sup> Joint or Infill	<sup>14</sup> Consolidation Code	<sup>15</sup> Order No.

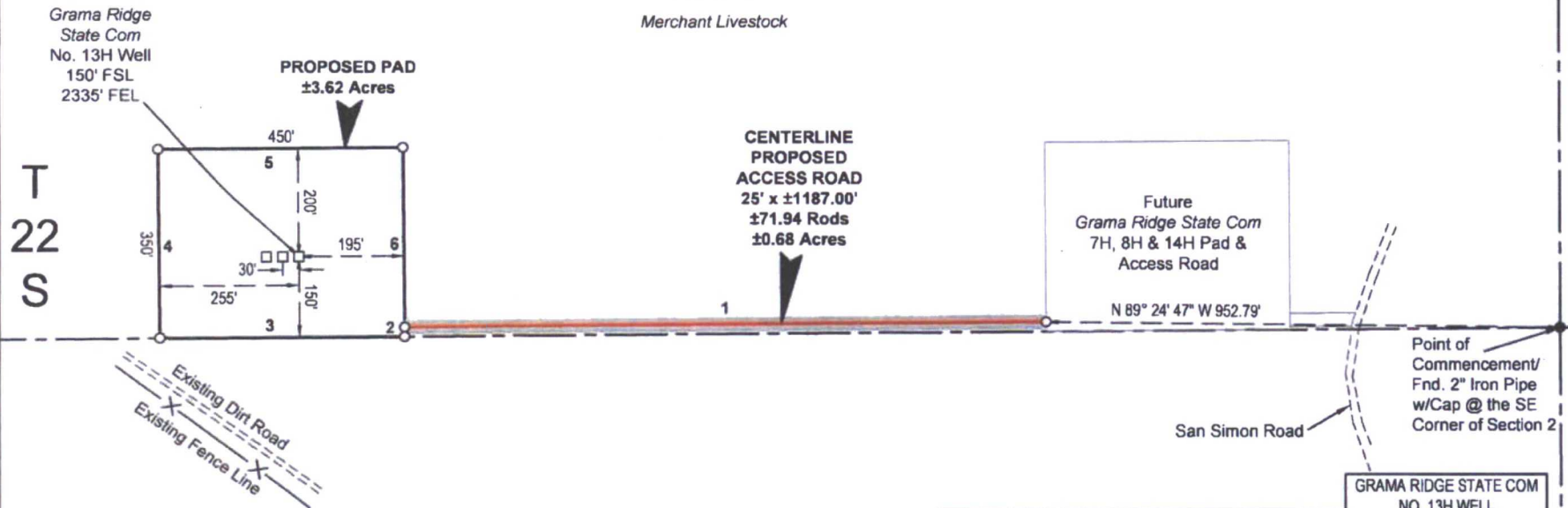
No allowable will be assigned to this completion until all interests have been consolidated or a non-standard unit has been approved by the division.

<p><sup>16</sup></p> <table border="1"> <caption>PROPOSED BOTTOM HOLE LOCATION</caption> <tr><td>X=</td><td>776,444</td><td>NAD 27</td></tr> <tr><td>Y=</td><td>525,559</td><td></td></tr> <tr><td>LAT.</td><td>32.441688</td><td></td></tr> <tr><td>LONG.</td><td>103.437256</td><td></td></tr> <tr><td>X=</td><td>817,627</td><td>NAD83</td></tr> <tr><td>Y=</td><td>525,621</td><td></td></tr> <tr><td>LAT.</td><td>32.441812</td><td></td></tr> <tr><td>LONG.</td><td>103.437736</td><td></td></tr> </table> <table border="1"> <caption>GRAMA RIDGE STATE COM 13H WELL</caption> <tr><td>X=</td><td>775,927</td><td>NAD 27</td></tr> <tr><td>Y=</td><td>515,396</td><td></td></tr> <tr><td>LAT.</td><td>32.413766</td><td></td></tr> <tr><td>LONG.</td><td>103.439209</td><td></td></tr> <tr><td>X=</td><td>817,110</td><td>NAD83</td></tr> <tr><td>Y=</td><td>515,457</td><td></td></tr> <tr><td>LAT.</td><td>32.413890</td><td></td></tr> <tr><td>LONG.</td><td>103.439688</td><td></td></tr> <tr><td>ELEVATION</td><td>+3572' NAVD 88</td><td></td></tr> </table> <p><b>CORNER COORDINATES TABLE (NAD 27)</b></p> <p>A - Y=525879.00, X=775546.76 B - Y=525909.52, X=778185.30 C - Y=515244.04, X=775624.49 D - Y=515265.47, X=778262.61</p>	X=	776,444	NAD 27	Y=	525,559		LAT.	32.441688		LONG.	103.437256		X=	817,627	NAD83	Y=	525,621		LAT.	32.441812		LONG.	103.437736		X=	775,927	NAD 27	Y=	515,396		LAT.	32.413766		LONG.	103.439209		X=	817,110	NAD83	Y=	515,457		LAT.	32.413890		LONG.	103.439688		ELEVATION	+3572' NAVD 88			<p><b><sup>17</sup> OPERATOR CERTIFICATION</b></p> <p>I hereby certify that the information contained herein is true and complete to the best of my knowledge and belief, and that this organization either owns a working interest or unleased mineral interest in the land including the proposed bottom hole location or has a right to drill this well at this location pursuant to a contract with an owner of such a mineral or working interest, or to a voluntary pooling agreement or a compulsory pooling order heretofore entered by the division.</p> <p><i>Denise L. White</i> 2-17-2017 Signature Date</p> <p><i>Denise L. White</i> Printed Name</p> <p><i>denise.white@blackmtn.com</i> E-mail Address</p> <p><b><sup>18</sup> SURVEYOR CERTIFICATION</b></p> <p>I hereby certify that the well location shown on this plat was plotted from field notes of actual surveys made by me or under my supervision, and that the same is true and correct to the best of my belief.</p> <p>2-10-2017 Date of Survey</p> <p><i>Robert L. Lastrapes</i> Signature and Seal of Professional Surveyor</p> <p>2-10-2017 Certificate Number</p>
	X=	776,444	NAD 27																																																		
Y=	525,559																																																				
LAT.	32.441688																																																				
LONG.	103.437256																																																				
X=	817,627	NAD83																																																			
Y=	525,621																																																				
LAT.	32.441812																																																				
LONG.	103.437736																																																				
X=	775,927	NAD 27																																																			
Y=	515,396																																																				
LAT.	32.413766																																																				
LONG.	103.439209																																																				
X=	817,110	NAD83																																																			
Y=	515,457																																																				
LAT.	32.413890																																																				
LONG.	103.439688																																																				
ELEVATION	+3572' NAVD 88																																																				

# R 34 E

## Sec. 2

Merchant Livestock



## Sec. 11

FOR THE EXCLUSIVE USE OF  
BLACK MOUNTAIN OPERATING, LLC  
I, Robert L. Lastrapes, Professional  
Surveyor, do hereby state this plat is true  
and correct to the best of my knowledge.



Robert L. Lastrapes  
Registration No. 23006

LEGEND	
	Centerline Access
	Proposed Pad
	Existing Fence Line
	Future Pad/Access
	Existing Road
	Section Line
	Fnd. Monument

Scale: 1" = 300'

300' 0 150' 300'



C. H. Fenstermaker & Associates, L.L.C.  
135 Regency Sq. Lafayette, LA 70508  
Ph. 337-237-2200 Fax. 337-232-3299  
www.fenstermaker.com

NW PAD CORNER		NE PAD CORNER		GRAMA RIDGE STATE COM NO. 13H WELL	
X=	775,670 NAD 27	X=	776,120 NAD 27	X=	775,927 NAD 27
Y=	515,594	Y=	515,598	Y=	515,396
ELEVATION +3572' NAVD 88		ELEVATION +3575' NAVD 88		LAT.	32.413766
SW PAD CORNER		SE PAD CORNER		LONG.	103.439209
X=	775,673 NAD 27	X=	776,123 NAD 27	X=	817,110 NAD83
Y=	515,244	Y=	515,248	Y=	515,457
ELEVATION +3567' NAVD 88		ELEVATION +3570' NAVD 88		LAT.	32.413890
				LONG.	103.439688
				ELEVATION +3572' NAVD 88	

SURFACE USE PLAT

Page 1 of 2

**BLACK MOUNTAIN OPERATING, LLC**

PROPOSED PAD & ACCESS ROAD  
GRAMA RIDGE STATE COM NO. 13H WELL  
SECTION 2, T22S-R34E  
LEA COUNTY, NEW MEXICO

DRAWN BY: BOR		REVISIONS		
PROJ. MGR.: VHV	No.	DATE:	REVISED BY:	
DATE: 02/13/2017	No.	DATE:	REVISED BY:	
FILENAME: T:\2017\2175363\DWG\Grama Ridge State Com 13H_SUP.dwg				



**NOTE:**

Please be advised, that while reasonable efforts are made to locate and verify pipelines and anomalies using our standard pipeline locating equipment, it is impossible to be 100 % effective. As such, we advise using caution when performing work as there is a possibility that pipelines and other hazards, such as fiber optic cables, PVC pipelines, etc. may exist undetected on site.

**NOTE:**

Many states maintain information centers that establish links between those who dig (excavators) and those who own and operate underground facilities (operators). It is advisable and in most states, law, for the contractor to contact the center for assistance in locating and marking underground utilities. For guidance: New Mexico One Call - [www.nmonecall.org](http://www.nmonecall.org)

**DISCLAIMER:** At this time, C. H. Fenstermaker & Associates, L.L.C. has not performed nor was asked to perform any type of engineering, hydrological modeling, flood plain, or "No Rise" certification analyses, including but not limited to determining whether the project will impact flood hazards in connection with federal/FEMA, state, and/or local laws, ordinances and regulations. Accordingly, Fenstermaker makes no warranty or representation of any kind as to the foregoing issues, and persons or entities using this information shall do so at their own risk.

FOR THE EXCLUSIVE USE OF  
BLACK MOUNTAIN OPERATING, LLC  
I, Robert L. Lastrapes, Professional  
Surveyor, do hereby state this plat is true  
and correct to the best of my knowledge.



CENTERLINE PROPOSED ACCESS ROAD		
COURSE	BEARING	DISTANCE
1	S 89° 32' 04" W	1187.00'

PROPOSED PAD		
COURSE	BEARING	DISTANCE
2	S 00° 27' 56" E	17.50'
3	S 89° 32' 04" W	450.00'
4	N 00° 27' 56" W	350.00'
5	N 89° 32' 04" E	450.00'
6	S 00° 27' 56" E	332.50'

**SURFACE USE PLAT**

Page 2 of 2

**BLACK MOUNTAIN OPERATING, LLC**

PROPOSED PAD & ACCESS ROAD  
GRAMA RIDGE STATE COM NO. 13H WELL  
SECTION 2, T22S-R34E  
LEA COUNTY, NEW MEXICO

DRAWN BY: BOR

**REVISIONS**

PROJ. MGR.: VHV

No.

DATE:

REVISED BY:

DATE: 02/13/2017

No.

DATE:

REVISED BY:

FILENAME: T:\2017\2175363\DWG\Grama Ridge State Com 13H\_SUP.dwg



C. H. Fenstermaker & Associates, L.L.C.  
135 Regency Sq. Lafayette, LA 70508  
Ph. 337-237-2200 Fax 337-232-3299  
[www.fenstermaker.com](http://www.fenstermaker.com)