

District I
1625 N. French Dr., Hobbs, NM 88240
Phone: (575) 393-6161 Fax: (575) 393-0720
District II
811 S. First St., Artesia, NM 88210
Phone: (575) 748-1283 Fax: (575) 748-9720
District III
1000 Rio Brazos Road, Aztec, NM 87410
Phone: (505) 334-6178 Fax: (505) 334-6170
District IV
1220 S. St. Francis Dr., Santa Fe, NM 87505
Phone: (505) 476-3460 Fax: (505) 476-3462

State of New Mexico
Energy, Minerals & Natural Resources Department
HOBBS OIL CONSERVATION DIVISION
1220 South St. Francis Dr.
Santa Fe, NM 87505

Form C-102
Revised August 1, 2011
Submit one copy to appropriate
District Office
☐ AMENDED REPORT

WELL LOCATION AND ACREAGE DEDICATION PLAT

| | | |
|--|---|---|
| ¹ API Number 30-025-43624 | ² Pool Code 28431 | ³ Pool Name GRAMA RIDGE BS, EAST (CONSOLIDATED) |
| ⁴ Property Code 317441 | ⁵ Property Name GRAMA RIDGE STATE COM | ⁶ Well Number 11H |
| ⁷ OGRID No. 371127 | ⁸ Operator Name BLACK MOUNTAIN OPERATING, LLC | ⁹ Elevation 3661' |

¹⁰ Surface Location

| UL or lot no. | Section | Township | Range | Lot Idn | Feet from the | North/South line | Feet from the | East/West line | County |
|---------------|---------|----------|-------------------|---------|---------------|------------------|---------------|----------------|--------|
| P | 36 | 21 SOUTH | 34 EAST, N.M.P.M. | | 383' | SOUTH | 386' | EAST | LEA |

¹¹ Bottom Hole Location If Different From Surface

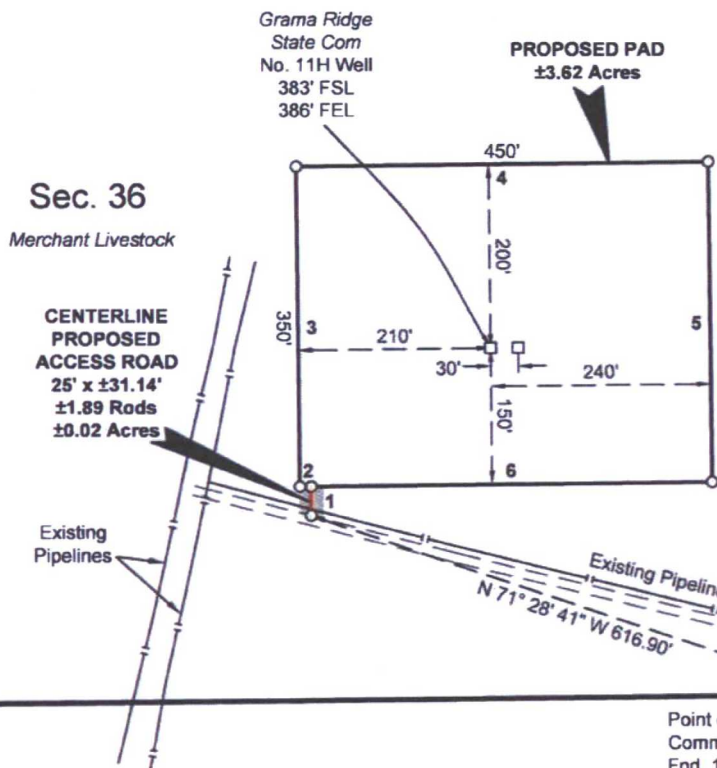
| UL or lot no. | Section | Township | Range | Lot Idn | Feet from the | North/South line | Feet from the | East/West line | County |
|---------------|---------|----------|-------------------|---------|---------------|------------------|---------------|----------------|--------|
| B | 25 | 21 SOUTH | 34 EAST, N.M.P.M. | | 2310' | SOUTH | 1947.9' | EAST | LEA |

| | | | |
|--------------------------------------|-------------------------------|---|-------------------------|
| ¹² Dedicated Acres 240 | ¹³ Joint or Infill | ¹⁴ Consolidation Code COMMUNITIZATION | ¹⁵ Order No. |
|--------------------------------------|-------------------------------|---|-------------------------|

No allowable will be assigned to this completion until all interests have been consolidated or a non-standard unit has been approved by the division.

| | | | | | | | | | | | | | | | | | | | | | | | | | | | | | | | | | | | | | | | |
|---|-------------------------------|--|------------|--------|------------|--|----------------|--|------------------|--|------------|-------|------------|--|----------------|--|------------------|--|--------------------------------|--|------------|--------|------------|--|----------------|--|------------------|--|------------|-------|------------|--|----------------|--|------------------|--|--------------------------|--|---|
| <p>¹⁶</p> <table><tr><td colspan="2">PROPOSED BOTTOM HOLE LOCATION</td></tr><tr><td>X= 781,509</td><td>NAD 27</td></tr><tr><td>Y= 528,253</td><td></td></tr><tr><td>LAT. 32.448974</td><td></td></tr><tr><td>LONG. 103.420766</td><td></td></tr><tr><td>X= 822,692</td><td>NAD83</td></tr><tr><td>Y= 528,315</td><td></td></tr><tr><td>LAT. 32.449099</td><td></td></tr><tr><td>LONG. 103.421246</td><td></td></tr></table> <table><tr><td colspan="2">GRAMA RIDGE STATE COM 11H WELL</td></tr><tr><td>X= 783,122</td><td>NAD 27</td></tr><tr><td>Y= 521,057</td><td></td></tr><tr><td>LAT. 32.429156</td><td></td></tr><tr><td>LONG. 103.415738</td><td></td></tr><tr><td>X= 824,305</td><td>NAD83</td></tr><tr><td>Y= 521,118</td><td></td></tr><tr><td>LAT. 32.429281</td><td></td></tr><tr><td>LONG. 103.416217</td><td></td></tr><tr><td colspan="2">ELEVATION +3661' NAVD 88</td></tr></table> <p>CORNER COORDINATES TABLE (NAD 27)</p> <p>A - Y=528550.55, X=778162.61 B - Y=528602.46, X=783454.59 C - Y=520624.37, X=778232.28 D - Y=520677.65, X=783511.02</p> | PROPOSED BOTTOM HOLE LOCATION | | X= 781,509 | NAD 27 | Y= 528,253 | | LAT. 32.448974 | | LONG. 103.420766 | | X= 822,692 | NAD83 | Y= 528,315 | | LAT. 32.449099 | | LONG. 103.421246 | | GRAMA RIDGE STATE COM 11H WELL | | X= 783,122 | NAD 27 | Y= 521,057 | | LAT. 32.429156 | | LONG. 103.415738 | | X= 824,305 | NAD83 | Y= 521,118 | | LAT. 32.429281 | | LONG. 103.416217 | | ELEVATION +3661' NAVD 88 | | <p>¹⁷ OPERATOR CERTIFICATION I hereby certify that the information contained herein is true and complete to the best of my knowledge and belief, and that this organization either owns a working interest or unleased mineral interest in the land including the proposed bottom hole location or has a right to drill this well at this location pursuant to a contract with an owner of such a mineral or working interest, or to a voluntary pooling agreement or a compulsory pooling order heretofore entered by the division.</p> <p><i>Denise L. White</i> 02/22/2017 Signature Date</p> <p>Denise L. White Printed Name</p> <p>denise.white@blackmtn.com E-mail Address</p> <p>¹⁸ SURVEYOR CERTIFICATION I hereby certify that the well location shown on this plat was plotted from field notes of actual surveys made by me or under my supervision, and that the same is true and correct to the best of my belief.</p> <p>1-30-2017 Date of Survey</p> <p><i>Robert E. Strapes</i> Signature and Seal of Professional Surveyor</p> <p>2-22-2017 Certificate Number</p> |
| PROPOSED BOTTOM HOLE LOCATION | | | | | | | | | | | | | | | | | | | | | | | | | | | | | | | | | | | | | | | |
| X= 781,509 | NAD 27 | | | | | | | | | | | | | | | | | | | | | | | | | | | | | | | | | | | | | | |
| Y= 528,253 | | | | | | | | | | | | | | | | | | | | | | | | | | | | | | | | | | | | | | | |
| LAT. 32.448974 | | | | | | | | | | | | | | | | | | | | | | | | | | | | | | | | | | | | | | | |
| LONG. 103.420766 | | | | | | | | | | | | | | | | | | | | | | | | | | | | | | | | | | | | | | | |
| X= 822,692 | NAD83 | | | | | | | | | | | | | | | | | | | | | | | | | | | | | | | | | | | | | | |
| Y= 528,315 | | | | | | | | | | | | | | | | | | | | | | | | | | | | | | | | | | | | | | | |
| LAT. 32.449099 | | | | | | | | | | | | | | | | | | | | | | | | | | | | | | | | | | | | | | | |
| LONG. 103.421246 | | | | | | | | | | | | | | | | | | | | | | | | | | | | | | | | | | | | | | | |
| GRAMA RIDGE STATE COM 11H WELL | | | | | | | | | | | | | | | | | | | | | | | | | | | | | | | | | | | | | | | |
| X= 783,122 | NAD 27 | | | | | | | | | | | | | | | | | | | | | | | | | | | | | | | | | | | | | | |
| Y= 521,057 | | | | | | | | | | | | | | | | | | | | | | | | | | | | | | | | | | | | | | | |
| LAT. 32.429156 | | | | | | | | | | | | | | | | | | | | | | | | | | | | | | | | | | | | | | | |
| LONG. 103.415738 | | | | | | | | | | | | | | | | | | | | | | | | | | | | | | | | | | | | | | | |
| X= 824,305 | NAD83 | | | | | | | | | | | | | | | | | | | | | | | | | | | | | | | | | | | | | | |
| Y= 521,118 | | | | | | | | | | | | | | | | | | | | | | | | | | | | | | | | | | | | | | | |
| LAT. 32.429281 | | | | | | | | | | | | | | | | | | | | | | | | | | | | | | | | | | | | | | | |
| LONG. 103.416217 | | | | | | | | | | | | | | | | | | | | | | | | | | | | | | | | | | | | | | | |
| ELEVATION +3661' NAVD 88 | | | | | | | | | | | | | | | | | | | | | | | | | | | | | | | | | | | | | | | |

| LEGEND | |
|--------|---------------------|
| | Proposed Pad |
| | Centerline Access |
| | Township/Range Line |
| | Existing Road |
| | Existing Pipeline |
| | End. Monument |



| GRAMA RIDGE STATE COM NO. 11H WELL | |
|---------------------------------------|----------------|
| X= | 783,122 NAD 27 |
| Y= | 521,057 |
| LAT. | 32.429156 |
| LONG. | 103.415738 |
| X= | 824,305 NAD83 |
| Y= | 521,118 |
| LAT. | 32.429281 |
| LONG. | 103.416217 |
| ELEVATION | +3661' NAVD 88 |

| NW PAD CORNER | | NE PAD CORNER | |
|---------------|----------------|---------------|----------------|
| X= | 782,910 NAD 27 | X= | 783,360 NAD 27 |
| Y= | 521,255 | Y= | 521,259 |
| ELEVATION | +3662' NAVD 88 | ELEVATION | +3663' NAVD 88 |
| SW PAD CORNER | | SE PAD CORNER | |
| X= | 782,914 NAD 27 | X= | 783,364 NAD 27 |
| Y= | 520,905 | Y= | 520,910 |
| ELEVATION | +3653' NAVD 88 | ELEVATION | +3659' NAVD 88 |

FOR THE EXCLUSIVE USE OF
BLACK MOUNTAIN OPERATING, LLC
I, Robert L. Lastrapes, Professional
Surveyor, do hereby state this plat is true
and correct to the best of my knowledge.



Robert L. Lastrapes
Registration No. 23006

BLACK MOUNTAIN OPERATING, LLC
PROPOSED PAD & ACCESS ROAD
GRAMA RIDGE STATE COM NO. 11H WELL
SECTION 36, T21S-R34E
LEA COUNTY, NEW MEXICO



C. H. Fenstermaker & Associates, L.L.C.
135 Regency Sq. Lafayette, LA 70508
Ph. 337-237-2200 Fax. 337-232-3299
www.fenstermaker.com

| | | | | | | |
|---|-----|-----------|-------------|--|--|--|
| DRAWN BY: BOR | | REVISIONS | | | | |
| PROJ. MGR.: VHV | No. | DATE: | REVISED BY: | | | |
| DATE: 02/17/2017 | No. | DATE: | REVISED BY: | | | |
| FILENAME: T:\2017\2175224\DWG\Grama Ridge State Com 11H_SUP.dwg | | | | | | |

NOTE:

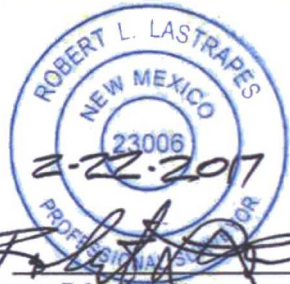
Please be advised, that while reasonable efforts are made to locate and verify pipelines and anomalies using our standard pipeline locating equipment, it is impossible to be 100 % effective. As such, we advise using caution when performing work as there is a possibility that pipelines and other hazards, such as fiber optic cables, PVC pipelines, etc. may exist undetected on site.

NOTE:

Many states maintain information centers that establish links between those who dig (excavators) and those who own and operate underground facilities (operators). It is advisable and in most states, law, for the contractor to contact the center for assistance in locating and marking underground utilities. For guidance: New Mexico One Call - www.nmonecall.org

DISCLAIMER: At this time, C. H. Fenstermaker & Associates, L.L.C. has not performed nor was asked to perform any type of engineering, hydrological modeling, flood plain, or "No Rise" certification analyses, including but not limited to determining whether the project will impact flood hazards in connection with federal/FEMA, state, and/or local laws, ordinances and regulations. Accordingly, Fenstermaker makes no warranty or representation of any kind as to the foregoing issues, and persons or entities using this information shall do so at their own risk.

FOR THE EXCLUSIVE USE OF
BLACK MOUNTAIN OPERATING, LLC
I, Robert L. Lastrapes, Professional
Surveyor, do hereby state this plat is true
and correct to the best of my knowledge.


Robert L. Lastrapes
Registration No. 23006

| CENTERLINE PROPOSED ACCESS ROAD | | |
|---------------------------------|---------|----------|
| COURSE | BEARING | DISTANCE |
| 1 | NORTH | 31.14' |

| PROPOSED PAD | | |
|--------------|-----------------|----------|
| COURSE | BEARING | DISTANCE |
| 2 | S 89° 22' 41" W | 12.50' |
| 3 | N 00° 37' 19" W | 350.00' |
| 4 | N 89° 22' 41" E | 450.00' |
| 5 | S 00° 37' 19" E | 350.00' |
| 6 | S 89° 22' 41" W | 437.50' |

SURFACE USE PLAT

BLACK MOUNTAIN OPERATING, LLC

PROPOSED PAD & ACCESS ROAD
GRAMA RIDGE STATE COM NO. 11H WELL
SECTION 36, T21S-R34E
LEA COUNTY, NEW MEXICO



C. H. Fenstermaker & Associates, L.L.C.
135 Regency Sq. Lafayette, LA 70508
Ph. 337-237-2200 Fax 337-232-3299
www.fenstermaker.com

| DRAWN BY: BOR | | REVISIONS | | | |
|---|-----|-----------|--|-------------|--|
| PROJ. MGR.: VHV | No. | DATE: | | REVISED BY: | |
| DATE: 02/17/2017 | No. | DATE: | | REVISED BY: | |
| FILENAME: T:\2017\2175224\DWG\Grama Ridge State Com 11H_SUP.dwg | | | | | |