

District I  
1625 N. French Dr., Hobbs, NM 88240  
Phone: (575) 393-6161 Fax: (575) 393-0720  
District II  
811 S. First St., Artesia, NM 88210  
Phone: (575) 748-1283 Fax: (575) 748-9720  
District III  
1000 Rio Brazos Road, Aztec, NM 87410  
Phone: (505) 334-6178 Fax: (505) 334-6170  
District IV  
1220 S. St. Francis Dr., Santa Fe, NM 87505  
Phone: (505) 476-3460 Fax: (505) 476-3462

HOBBES OCD  
FEB 24 2017  
RECEIVED

State of New Mexico  
Energy, Minerals & Natural Resources Department  
OIL CONSERVATION DIVISION  
1220 South St. Francis Dr.  
Santa Fe, NM 87505

Form C-102  
Revised August 1, 2011  
Submit one copy to appropriate  
District Office

☐ AMENDED REPORT

WELL LOCATION AND ACREAGE DEDICATION PLAT

<sup>1</sup> API Number 30-025-43625	<sup>2</sup> Pool Code 28431	<sup>3</sup> Pool Name GRAMA RIDGE BS, EAST (CONSOLIDATED)
<sup>4</sup> Property Code 317441	<sup>5</sup> Property Name GRAMA RIDGE STATE COM	<sup>6</sup> Well Number 12H
<sup>7</sup> OGRID No. 371127	<sup>8</sup> Operator Name BLACK MOUNTAIN OPERATING, LLC	<sup>9</sup> Elevation 3662'

<sup>10</sup> Surface Location

UL or lot no.	Section	Township	Range	Lot Idn	Feet from the	North/South line	Feet from the	East/West line	County
P	36	21 SOUTH	34 EAST, N.M.P.M.		383'	SOUTH	356'	EAST	LEA

<sup>11</sup> Bottom Hole Location If Different From Surface

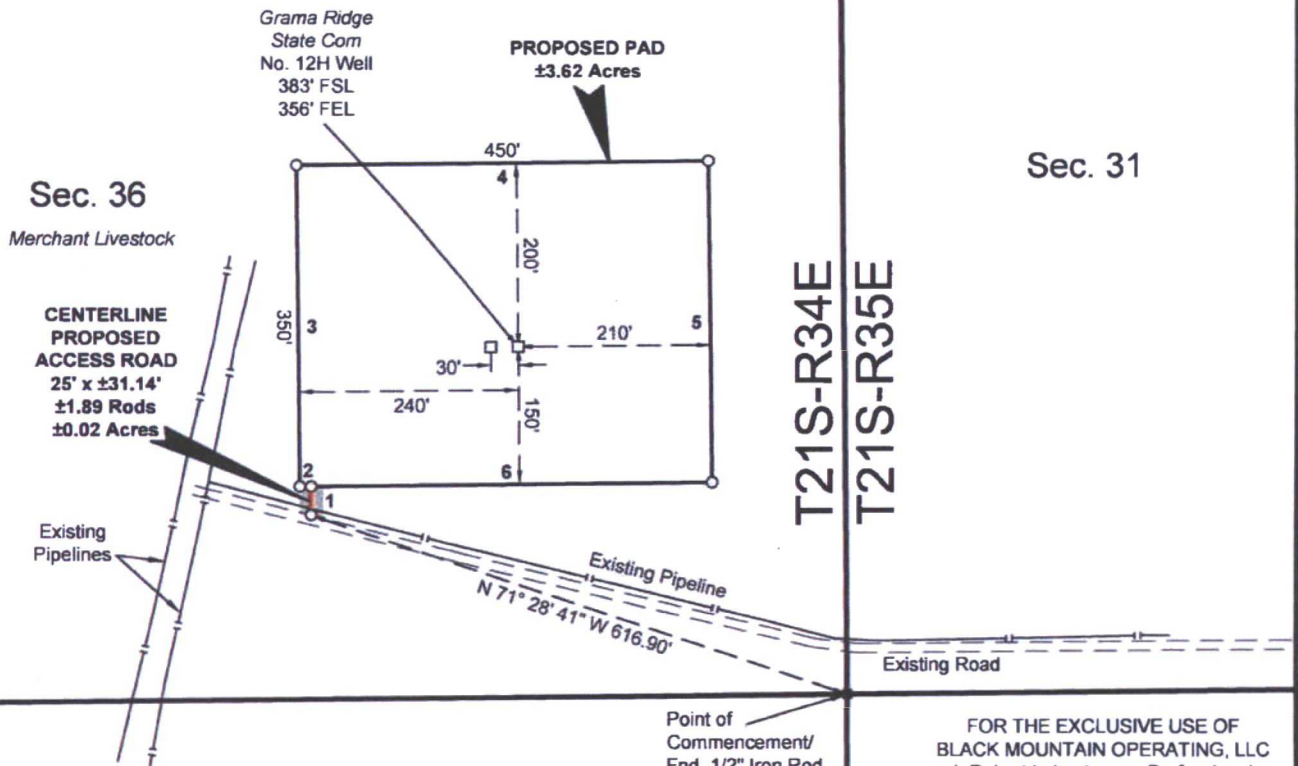
UL or lot no.	Section	Township	Range	Lot Idn	Feet from the	North/South line	Feet from the	East/West line	County
A	25	21 SOUTH	34 EAST, N.M.P.M.		2309'	SOUTH	612.6'	EAST	LEA

<sup>12</sup> Dedicated Acres 240	<sup>13</sup> Joint or Infill	<sup>14</sup> Consolidation Code COMMUNITIZATION	<sup>15</sup> Order No.
--------------------------------------	-------------------------------	---	-------------------------

No allowable will be assigned to this completion until all interests have been consolidated or a non-standard unit has been approved by the division.

<p><sup>16</sup></p> <table><tr><td>PROPOSED BOTTOM HOLE LOCATION</td></tr><tr><td>X= 782,844 NAD 27</td></tr><tr><td>Y= 528,266</td></tr><tr><td>LAT. 32.448979</td></tr><tr><td>LONG. 103.416438</td></tr><tr><td>X= 824,027 NAD83</td></tr><tr><td>Y= 528,328</td></tr><tr><td>LAT. 32.449103</td></tr><tr><td>LONG. 103.416918</td></tr></table> <table><tr><td>GRAMA RIDGE STATE COM 12H WELL</td></tr><tr><td>X= 783,152 NAD 27</td></tr><tr><td>Y= 521,057</td></tr><tr><td>LAT. 32.429157</td></tr><tr><td>LONG. 103.415641</td></tr><tr><td>X= 824,335 NAD83</td></tr><tr><td>Y= 521,118</td></tr><tr><td>LAT. 32.429281</td></tr><tr><td>LONG. 103.416120</td></tr><tr><td>ELEVATION +3662' NAVD 88</td></tr></table> <p>CORNER COORDINATES TABLE (NAD 27)</p> <p>A - Y=528550.55, X=778162.61 B - Y=528602.46, X=783454.59 C - Y=520624.37, X=778232.28 D - Y=520677.65, X=783511.02</p>	PROPOSED BOTTOM HOLE LOCATION	X= 782,844 NAD 27	Y= 528,266	LAT. 32.448979	LONG. 103.416438	X= 824,027 NAD83	Y= 528,328	LAT. 32.449103	LONG. 103.416918	GRAMA RIDGE STATE COM 12H WELL	X= 783,152 NAD 27	Y= 521,057	LAT. 32.429157	LONG. 103.415641	X= 824,335 NAD83	Y= 521,118	LAT. 32.429281	LONG. 103.416120	ELEVATION +3662' NAVD 88	<p>Diagram showing proposed producing interval, penetration point, and well location with coordinates and bearings.</p>	<p><sup>17</sup> OPERATOR CERTIFICATION</p> <p>I hereby certify that the information contained herein is true and complete to the best of my knowledge and belief, and that this organization either owns a working interest or unleased mineral interest in the land including the proposed bottom hole location or has a right to drill this well at this location pursuant to a contract with an owner of such a mineral or working interest, or to a voluntary pooling agreement or a compulsory pooling order heretofore entered by the division.</p> <p>Signature: Denise L. White Date: 02/22/2017</p> <p>Printed Name: Denise L. White</p> <p>E-mail Address: denise.white@blackmtn.com</p> <p><sup>18</sup> SURVEYOR CERTIFICATION</p> <p>I hereby certify that the well location shown on this plat was plotted from field notes of actual surveys made by me or under my supervision, and that the same is true and correct to the best of my belief.</p> <p>Date of Survey: 1-30-2017</p> <p>Signature and Seal of Professional Surveyor: [Signature]</p> <p>Certificate Number: 23006</p>
PROPOSED BOTTOM HOLE LOCATION																					
X= 782,844 NAD 27																					
Y= 528,266																					
LAT. 32.448979																					
LONG. 103.416438																					
X= 824,027 NAD83																					
Y= 528,328																					
LAT. 32.449103																					
LONG. 103.416918																					
GRAMA RIDGE STATE COM 12H WELL																					
X= 783,152 NAD 27																					
Y= 521,057																					
LAT. 32.429157																					
LONG. 103.415641																					
X= 824,335 NAD83																					
Y= 521,118																					
LAT. 32.429281																					
LONG. 103.416120																					
ELEVATION +3662' NAVD 88																					

LEGEND	
	Proposed Pad
	Centerline Access
	Township/Range Line
	Existing Road
	Existing Pipeline
	Fnd. Monument



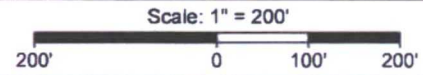
GRAMA RIDGE STATE COM NO. 12H WELL	
X= 783,152	NAD 27
Y= 521,057	
LAT. 32.429157	
LONG. 103.415641	
X= 824,335	NAD83
Y= 521,118	
LAT. 32.429281	
LONG. 103.416120	
ELEVATION +3662' NAVD 88	

NW PAD CORNER		NE PAD CORNER	
X= 782,910	NAD 27	X= 783,360	NAD 27
Y= 521,255		Y= 521,259	
ELEVATION +3662' NAVD 88		ELEVATION +3663' NAVD 88	
SW PAD CORNER		SE PAD CORNER	
X= 782,914	NAD 27	X= 783,364	NAD 27
Y= 520,905		Y= 520,910	
ELEVATION +3653' NAVD 88		ELEVATION +3659' NAVD 88	

FOR THE EXCLUSIVE USE OF  
BLACK MOUNTAIN OPERATING, LLC  
I, Robert L. Lastrapes, Professional  
Surveyor, do hereby state this plat is true  
and correct to the best of my knowledge.



Robert L. Lastrapes  
Registration No. 23006



**BLACK MOUNTAIN OPERATING, LLC**  
PROPOSED PAD & ACCESS ROAD  
GRAMA RIDGE STATE COM NO. 12H WELL  
SECTION 36, T21S-R34E  
LEA COUNTY, NEW MEXICO



C H Fenstermaker & Associates, L.L.C.  
135 Regency Sq. Lafayette, LA 70508  
Ph 337-237-2200 Fax 337-232-3299  
www.fenstermaker.com

DRAWN BY: BOR		REVISIONS	
PROJ. MGR.: VHV	No.	DATE:	REVISED BY:
DATE: 02/20/2017	No.	DATE:	REVISED BY:
FILENAME: T:\2017\2175225\DWG\Grama Ridge State Com 12H_SUP.dwg			



**NOTE:**

Please be advised, that while reasonable efforts are made to locate and verify pipelines and anomalies using our standard pipeline locating equipment, it is impossible to be 100 % effective. As such, we advise using caution when performing work as there is a possibility that pipelines and other hazards, such as fiber optic cables, PVC pipelines, etc. may exist undetected on site.

**NOTE:**

Many states maintain information centers that establish links between those who dig (excavators) and those who own and operate underground facilities (operators). It is advisable and in most states, law, for the contractor to contact the center for assistance in locating and marking underground utilities. For guidance: New Mexico One Call - [www.nmonecall.org](http://www.nmonecall.org)

**DISCLAIMER:** At this time, C. H. Fenstermaker & Associates, L.L.C. has not performed nor was asked to perform any type of engineering, hydrological modeling, flood plain, or "No Rise" certification analyses, including but not limited to determining whether the project will impact flood hazards in connection with federal/FEMA, state, and/or local laws, ordinances and regulations. Accordingly, Fenstermaker makes no warranty or representation of any kind as to the foregoing issues, and persons or entities using this information shall do so at their own risk.

FOR THE EXCLUSIVE USE OF  
BLACK MOUNTAIN OPERATING, LLC  
I, Robert L. Lastrapes, Professional  
Surveyor, do hereby state this plat is true  
and correct to the best of my knowledge.



CENTERLINE PROPOSED ACCESS ROAD		
COURSE	BEARING	DISTANCE
1	NORTH	31.14'

PROPOSED PAD		
COURSE	BEARING	DISTANCE
2	S 89° 22' 41" W	12.50'
3	N 00° 37' 19" W	350.00'
4	N 89° 22' 41" E	450.00'
5	S 00° 37' 19" E	350.00'
6	S 89° 22' 41" W	437.50'

**BLACK MOUNTAIN OPERATING, LLC**

PROPOSED PAD & ACCESS ROAD  
GRAMA RIDGE STATE COM NO. 12H WELL  
SECTION 36, T21S-R34E  
LEA COUNTY, NEW MEXICO



C. H. Fenstermaker & Associates, L.L.C.  
135 Regency Sq. Lafayette, LA 70508  
Ph. 337-237-2200 Fax. 337-232-3299  
[www.fenstermaker.com](http://www.fenstermaker.com)

DRAWN BY: BOR		REVISIONS	
PROJ. MGR.: VHV	No.	DATE:	REVISED BY:
DATE: 02/20/2017	No.	DATE:	REVISED BY:
FILENAME: T:\2017\2175225\DWG\Grama Ridge State Com 12H_SUP.dwg			