

District I
1625 N. French Dr., Hobbs, NM 88240
Phone: (575) 393-6161 Fax: (575) 393-0720
District II
811 S. First St., Artesia, NM 88210
Phone: (575) 748-1283 Fax: (575) 748-9720
District III
1000 Rio Brazos Road, Aztec, NM 87410
Phone: (505) 334-6178 Fax: (505) 334-6170
District IV
1220 S. St. Francis Dr., Santa Fe, NM 87505
Phone: (505) 476-3460 Fax: (505) 476-3462

State of New Mexico
Energy, Minerals & Natural Resources Department
OIL CONSERVATION DIVISION
1220 South St. Francis Dr.
Santa Fe, NM 87505

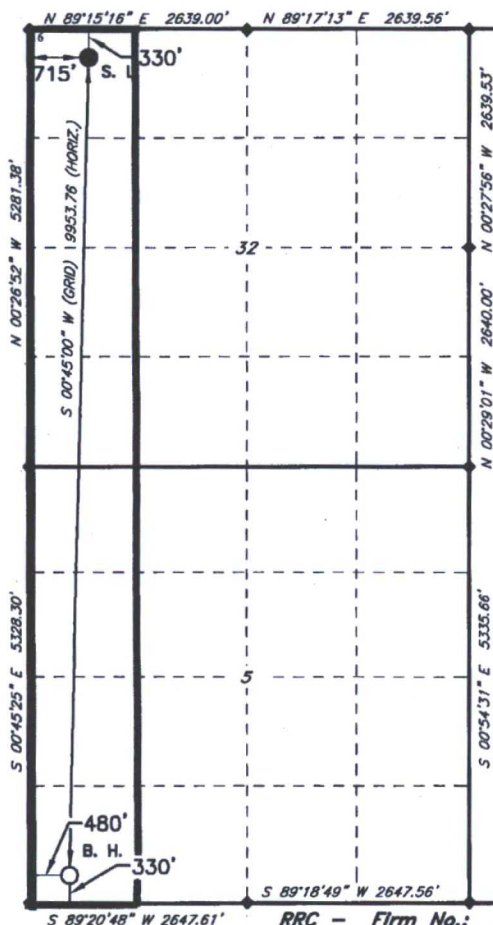
Form C-102
Revised August 1, 2011
Submit one copy to appropriate
District Office

☐ AMENDED REPORT

WELL LOCATION AND ACREAGE DEDICATION PLAT

1 API Number 30-015025-47626		2 Pool Code 35340 62720		3 Pool Name Kennitz, Cisco VACUUM; UPPER PEAK NW	
4 Property Code 300557		5 Property Name STATE LF 32-5			6 Well Number 2H
7 OGRID NO. 215099		8 Operator Name CIMAREX ENERGY COMPANY			9 Elevation 4127'
10 Surface Location					
UL or lot no. D	Section 32	Township 16S	Range 34E	Lot Idn 330	Feet from the 330
		North/South line NORTH		Feet from the 715	East/West line WEST
				County LEA	
11 Bottom Hole Location If Different From Surface					
UL or lot no. M	Section 5	Township 17S	Range 34E	Lot Idn 330	Feet from the 330
		North/South line SOUTH		Feet from the 480	East/West line WEST
				County LEA	
12 Dedicated Acres 320		13 Joint or Infill		14 Consolidation Code	
15 Order No.					

No allowable will be assigned to this completion until all interest have been consolidated or a non-standard unit has been approved by the division.



GEODETIC DATA
NAD 83 GRID - NM EAST

SURFACE LOCATION
N: 686425.5 - E: 769742.4
LAT: 32.88478940° N
LONG: 103.58929005° W
LAT: 32°53'05.2419\" N
LONG: 103°35'21.4441\" W

BOTTOM HOLE
N: 676474.8 - E: 769612.1
LAT: 32.85744362° N
LONG: 103.58994262° W
LAT: 32°51'26.7970\" N
LONG: 103°35'23.7934\" W

GEODETIC DATA
NAD 27 GRID - NM EAST

SURFACE LOCATION
N: 686360.1 - E: 728564.3
LAT: 32.88466808° N
LONG: 103.58878805° W
LAT: 32°53'04.8051\" N
LONG: 103°35'19.6370\" W

BOTTOM HOLE
N: 676409.6 - E: 728433.8
LAT: 32.85732199° N
LONG: 103.58944138° W
LAT: 32°51'26.3592\" N
LONG: 103°35'21.9890\" W

- = SURFACE HOLE LOCATION
- = BOTTOM HOLE LOCATION
- ◆ = SECTION CORNER LOCATED

0 500 1,000 2,000 Feet

17 OPERATOR CERTIFICATION

I hereby certify that the information contained herein is true and complete to the best of my knowledge and belief, and that this organization either owns a working interest or unleased mineral interest in the land including the proposed bottom hole location or has a right to drill this well at this location pursuant to a contract with an owner of such a mineral or working interest, or to a voluntary pooling agreement or a compulsory pooling

order heretofore entered by the division

Signature Aricka Easterling Date 2/21/17

Printed Name Aricka Easterling

E-mail Address aeasterling@cimarex.com

18 SURVEYOR CERTIFICATION

I hereby certify that the well location shown on this plat was plotted from field notes of actual surveys made by me or under my supervision, and that the same is true and correct to the best of my belief.

1-26-2017

Date of Survey

Signature and Seal of Professional Surveyor

19680

Certificate Number



RRC - Firm No.: TX 10193838 NM 4655451 - Job No.: LS1701028