

District I  
1625 N. French Dr. Hobbs, NM 88240  
Phone (575) 393 6161 Fax (575) 393 0720  
District II  
811 S. First St., Artesia, NM 88210  
Phone (575) 748 283 Fax (575) 748 9770  
District III  
1000 Rio Bravo Road, Aztec, NM 87410  
Phone (505) 334 6 78 Fax (505) 334 6170  
District IV  
1220 S. St. Francis Dr. Santa Fe, NM 87505  
Phone (505) 476 3469 Fax (505) 476 1462

State of New Mexico  
Energy, Minerals & Natural Resources Department  
OIL CONSERVATION DIVISION  
1220 South St. Francis Dr.  
Santa Fe, NM 87505

Form C-102  
Revised August 1, 2011  
Submit one copy to appropriate  
District Office

☐ AMENDED REPORT

WELL LOCATION AND ACREAGE DEDICATION PLAT

<sup>1</sup> API Number 30-025-43462	<sup>2</sup> Pool Code 97838	<sup>3</sup> Pool Name Sparrows, Upper Bone Spring, Skale
<sup>4</sup> Property Code 317496	<sup>5</sup> Property Name SD WE 15 FED P9	<sup>6</sup> Well Number 711
<sup>7</sup> OGRID No. 4323	<sup>8</sup> Operator Name CHEVRON U.S.A. INC.	<sup>9</sup> Elevation 3158'

Surface Location

UL or lot no.	Section	Township	Range	Lot Idn	Feet from the	North/South line	Feet from the	East/West line	County
O	15	26 SOUTH	32 EAST, N.M.P.M.		12'	SOUTH	1421'	EAST	LEA

Bottom Hole Location If Different From Surface

UL or lot no.	Section	Township	Range	Lot Idn	Feet from the	North/South line	Feet from the	East/West line	County
A	15	26 SOUTH	32 EAST, N.M.P.M.		180'	NORTH	990'	EAST	LEA
<sup>10</sup> Dedicated Acres 160	<sup>11</sup> Joint or Infill	<sup>12</sup> Consolidation Code	<sup>13</sup> Order No.						

No allowable will be assigned to this completion until all interests have been consolidated or a non-standard unit has been approved by the division.

<p><b>PROPOSED BOTTOM HOLE LOCATION</b></p> <p>X= 709,590 NAD 27 Y= 382,456 LAT 32.049681 LONG 103.658866</p> <p>X= 750,777 NAD83 Y= 382,513 LAT 32.049806 LONG 103.657337</p>	<p>Proposed Last Take Point 330' FNL, 990' FEL</p> <p>Proposed First Take Point 330' FSL, 990' FEL N 53°12'40" E 536.50'</p> <p>Proposed Producing Interval</p> <p>180'</p> <p>990'</p> <p>12'</p> <p>1421'</p> <p>N 00°09'25" W 4,837.81'</p>	<p><b>14 OPERATOR CERTIFICATION</b></p> <p>I hereby certify that the information contained herein is true and complete to the best of my knowledge and belief and that this organization either owns a working interest or unleased mineral interest in the land including the proposed bottom hole location or has a right to drill this well at this location pursuant to a contract with an owner of such a mineral or working interest or to a voluntary pooling agreement or a compulsory pooling order heretofore entered by the division.</p> <p><i>Denise Pinkerton</i> 7/27/2016 Signature Date</p> <p>Denise Pinkerton Printed Name</p> <p>lucete.j@chevron.com E-mail Address</p> <p><b>15 SURVEYOR CERTIFICATION</b></p> <p>I hereby certify that the well location shown on this plat was plotted from field notes of actual surveys made by me or under my supervision and that the same is true and correct to the best of my belief.</p> <p>5-26-2016 Date of Survey</p> <p><i>[Signature]</i> Signature and Seal of Professional Surveyor</p> <p>23006 Certificate Number</p>
--	--	--

CORNER COORDINATES TABLE (NAD 27)

A - Y=382632.76 X=709247.41  
B - Y=382643.92 X=710579.74  
C - Y=377284.84 X=709262.41  
D - Y=377296.47 X=710594.39  
E - Y=378610.31 X=707926.60  
F - Y=378621.82 X=709258.66  
G - Y=377273.21 X=707930.44

**SD WE 15 FED P9 7H WELL**

X= 709,174 NAD 27  
Y= 377,297  
LAT 32.035506  
LONG 103.658314

X= 750,361 NAD83  
Y= 377,354  
LAT 32.035631  
LONG 103.658784

ELEVATION +3158' NAD83

R 32 E

Sec. 15

Bureau of Land Management

Sec. 14

Bureau of Land Management

T  
26  
S

Proposed Pad 12 Flowline Cluster  
±6914'  
Proposed Pad 12 Temporary Water Line  
±10,541'  
Proposed Pad 9 Flowline Cluster  
±4,658'  
Proposed Pad 9 Temporary Water Line  
±8,076'

Proposed 60' Wide  
PL ROW

Existing  
Battery  
Pad

Existing  
Compressor  
Pad

Existing Draw  
Well 13.4P  
Pad

Pad 7

Pad 12

Proposed 60' Wide PL ROW  
(Pad 9 to Pad 12)

Pad 9

Pad 5

Proposed Expansion

Existing Lease Road

Proposed  
Access  
Road

Proposed  
Access  
Road

Existing Rod  
Hills 1H Pad

Proposed  
Fire  
Road

Proposed  
Access  
Road

Sec. 22

Bureau of Land Management

Sec. 23

Bureau of Land Management

Sec. 24

Bureau of Land Management

N40 27 NEW MEXICO EAST ZONE



Scale: 1" = 1000'

1000' 0 500' 1000'



C. H. Fenstermaker & Associates, L.L.C.  
135 Regency Sq. Lafayette, LA 70508  
Ph. 337-237-2200 Fax. 337-232-3299  
www.fenstermaker.com

CHEVRON U.S.A. INC.

WORK AREA DETAIL FOR THE  
SD WE 15 FED P9 & P12 1H-8H WELLS  
SECTIONS 15, 22, 23 & 24, T26S-R32E  
LEA COUNTY, NEW MEXICO

DRAWN BY: VHV

REVISIONS

PROJ. MGR.: VHV

No. #

DATE:

REVISED BY:

DATE: JULY 26, 2016

No. #

DATE:

REVISED BY:

FILENAME: T:\2015\2152215\DWG\Pad 9\_Pad 12\_AerialDetail.dwg



# LEGEND

- Section Line
- Centerline Access Road
- Existing Lease Road & Drillsite
- As-Drilled Well
- Fnd. Monument

R 32 E

Sec. 15

Bureau of Land Management

(±1.28 Acres-Pad)

FOR THE EXCLUSIVE USE OF  
CHEVRON U.S.A. INC.  
I, Robert L. Lastrapes, Professional  
Surveyor, do hereby state this plat is true  
and correct to the best of my knowledge.

ROBERT L. LASTRAPES  
NEW MEXICO  
23006  
6-20-2016  
PROFESSIONAL SURVEYOR  
Robert L. Lastrapes  
Registration No. 23006

PROPOSED  
ARCHAEOLOGICAL  
AREA  
±5.21 ACRES

T  
26  
S

PROPOSED PAD  
±4.09 ACRES

SD WE 15 Fed P9  
No. 8H Well  
12' FSL  
1396' FEL

Future Interim  
Reclamation Area

Red Hills West 22 Fed Com  
No. 1H Well  
(As-Drilled)

Point of  
Commencement/  
Fnd. 1 1/2" Iron  
Pipe w/Cap

Existing Lease Road

CENTERLINE  
PROPOSED ACCESS ROAD  
14' x ±61.18'  
±0.02 ACRES  
±3.71 Rods

Sec. 22

Bureau of Land Management

(±2.81 Acres-Pad)

SD WE 15 FED P9 NO. 8H WELL			
X=	709,199	NAD 27	
Y=	377,297		
LAT.	32.035506		
LONG.	103.658233		
X=	750,386	NAD83	
Y=	377,354		
LAT.	32.035631		
LONG.	103.658703		
ELEVATION	+3157'	NAVD 88	

NW ARCH. AREA CORNER		NE ARCH. AREA CORNER		SE ARCH. AREA CORNER		SW ARCH. AREA CORNER	
X=	708,822	NAD 27	X=	709,497	NAD 27	X=	709,502
Y=	377,593		Y=	377,599		Y=	376,999
NW PAD CORNER		NE PAD CORNER		SE PAD CORNER		SW PAD CORNER	
X=	708,913	NAD 27	X=	709,408	NAD 27	X=	709,411
Y=	377,394		Y=	377,399		Y=	377,039
ELEVATION	+3157'	NAVD 88	ELEVATION	+3156'	NAVD 88	ELEVATION	+3157'
						ELEVATION	+3156'

SURFACE USE PLAT

Scale: 1" = 200'

200' 0 100' 200'

CHEVRON U.S.A. INC.  
PROPOSED PAD & ACCESS ROAD  
SD WE 15 FED P9 NO. 8H WELL  
SECTIONS 15 & 22, T26S-R32E  
LEA COUNTY, NEW MEXICO

PAGE 1 OF 2



C H Fenstermaker & Associates, L L C  
135 Regency Sq. Lafayette, LA 70508  
Ph. 337-237-2200 Fax 337-232-3299  
www.fenstermaker.com

DRAWN BY: KJD

REVISIONS

PROJ. MGR.: VHV	No. 1	DATE: 06/02/2016	REVISED BY: BOR
DATE: JUNE 23, 2015	No.	DATE:	REVISED BY:
FILENAME: T:\2015\215222\DWG\SD WE 15 Fed P9 8H_SUP.dwg			

DISCLAIMER: At this time, C. H. Fenstermaker & Associates, L.L.C. has not performed nor was asked to perform any type of engineering, hydrological modeling, flood plain, or "No Rise" certification analyses, including but not limited to determining whether the project will impact flood hazards in connection with federal/FEMA, state, and/or local laws, ordinances and regulations. Accordingly, Fenstermaker makes no warranty or representation of any kind as to the foregoing issues, and persons or entities using this information shall do so at their own risk.

**NOTE:**

Please be advised, that while reasonable efforts are made to locate and verify pipelines and anomalies using our standard pipeline locating equipment, it is impossible to be 100 % effective. As such, we advise using caution when performing work as there is a possibility that pipelines and other hazards, such as fiber optic cables, PVC pipelines, etc. may exist undetected on site.

**NOTE:**

Many states maintain information centers that establish links between those who dig (excavators) and those who own and operate underground facilities (operators). It is advisable and in most states, law, for the contractor to contact the center for assistance in locating and marking underground utilities. For guidance, New Mexico One Call. [www.nmonecall.org](http://www.nmonecall.org)

FOR THE EXCLUSIVE USE OF  
CHEVRON U.S.A. INC.  
I, Robert L. Lastrapes, Professional  
Surveyor, do hereby state this plat is true  
and correct to the best of my knowledge.

ROBERT L. LASTRAPES  
NEW MEXICO  
23006  
6-20-2016  
PROFESSIONAL SURVEYOR  
Robert L. Lastrapes  
Registration No. 23006

**SURFACE USE PLAT**

**CHEVRON U.S.A. INC.**  
PROPOSED PAD & ACCESS ROAD  
SD WE 15 FED P9 NO. 8H WELL  
SECTIONS 15 & 22, T26S-R32E  
LEA COUNTY, NEW MEXICO

PAGE 2 OF 2

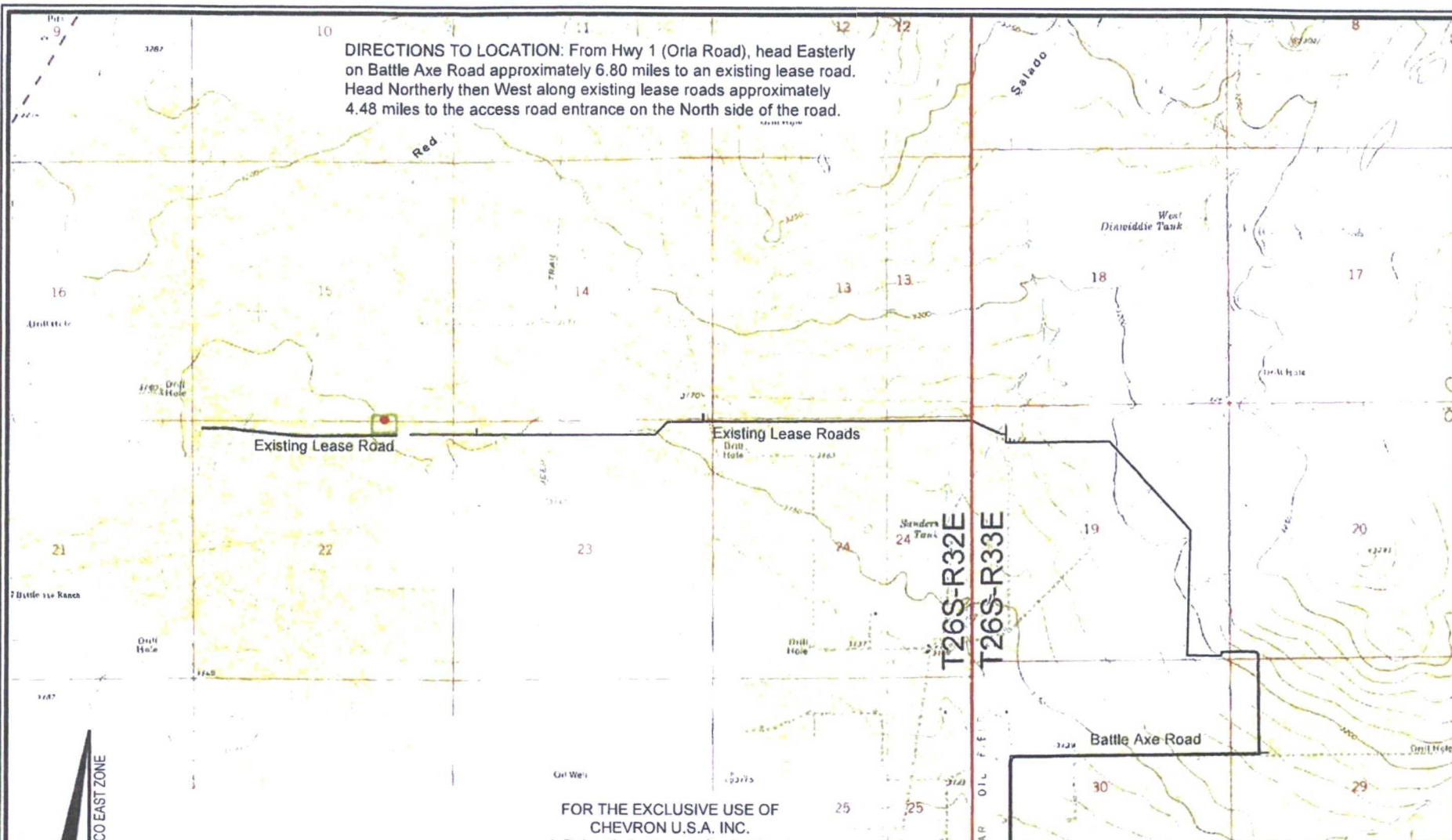


C. H. Fenstermaker & Associates, L.L.C.  
135 Regency Sq. Lafayette, LA 70508  
Ph. 337-237-2200 Fax. 337-232-3299  
[www.fenstermaker.com](http://www.fenstermaker.com)

DRAWN BY: KJD		REVISIONS	
PROJ. MGR.: VHV	No. 1	DATE: 06/02/2016	REVISED BY: BOR
DATE: JUNE 23, 2015	No.	DATE:	REVISED BY:
FILENAME: T:\2015\215222\DWG\SD WE 15 Fed P9 8H_SUP.dwg			



**DIRECTIONS TO LOCATION:** From Hwy 1 (Orla Road), head Easterly on Battle Axe Road approximately 6.80 miles to an existing lease road. Head Northerly then West along existing lease roads approximately 4.48 miles to the access road entrance on the North side of the road.



**LEGEND**

- Proposed Well
- Proposed Access Road
- Proposed Drillsite
- Existing Road
- Section Line

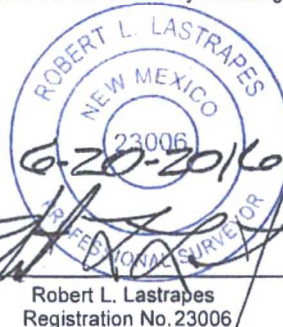
Scale: 1" = 3,000'

3,000' 0 1,500' 3,000'



C. H. Fenstermaker & Associates, L.L.C.  
135 Regency Sq. Lafayette, LA 70508  
Ph. 337-237-2200 Fax. 337-232-3299  
www.fenstermaker.com

FOR THE EXCLUSIVE USE OF  
CHEVRON U.S.A. INC.  
I, Robert L. Lastrapes, Professional  
Surveyor, do hereby state this plat is true  
and correct to the best of my knowledge.



**VICINITY MAP**

**CHEVRON U.S.A. INC.**  
SD WE 15 FED P9 NO. 7H WELL  
LOCATED 12' FSL & 1421' FEL  
SECTION 15, T26S-R32E  
LEA COUNTY, NEW MEXICO

DRAWN BY: KJD

**REVISIONS**

PROJ. MGR.: VHV

No. 1

DATE: 06/02/2016

REVISED BY: BOR

DATE: JUNE 23, 2015

No.

DATE:

REVISED BY:

FILENAME: T:\2015\2152221\DWG\SD WE 15 Fed P9 7H\_APD.dwg

# LEGEND

- Section Line
- Centerline Access Road
- Existing Lease Road & Drillsite
- As-Drilled Well
- Fnd. Monument

R 32 E

Sec. 15

Bureau of Land Management

(±1.28 Acres-Pad)

FOR THE EXCLUSIVE USE OF  
CHEVRON U.S.A. INC.  
I, Robert L. Lastrapes, Professional  
Surveyor, do hereby state this plat is true  
and correct to the best of my knowledge.



Robert L. Lastrapes  
Registration No. 23006

PROPOSED  
ARCHAEOLOGICAL  
AREA  
±5.21 ACRES

T  
26  
S

PROPOSED PAD  
±4.09 ACRES

SD WE 15 Fed P9  
No. 7H Well  
12' FSL  
1421' FEL

Red Hills West 22 Fed Com  
No. 1H Well  
(As-Drilled)

Point of  
Commencement/  
Fnd. 1 1/2" Iron  
Pipe w/Cap

Existing Lease Road

CENTERLINE  
PROPOSED ACCESS ROAD  
14' x ±61.18'  
±0.02 ACRES  
±3.71 Rods

Sec. 22

Bureau of Land Management

(±2.81 Acres-Pad)

SD WE 15 FED P9 NO. 7H WELL		
X=	709,174	NAD 27
Y=	377,297	
LAT.	32.035506	
LONG.	103.658314	
X=	750,361	NAD83
Y=	377,354	
LAT.	32.035631	
LONG.	103.658784	
ELEVATION +3158' NAVD 88		

NW ARCH. AREA CORNER	NE ARCH. AREA CORNER	SE ARCH. AREA CORNER	SW ARCH. AREA CORNER
X= 708,822 NAD 27 Y= 377,593	X= 709,497 NAD 27 Y= 377,599	X= 709,502 NAD 27 Y= 376,999	X= 708,827 NAD 27 Y= 376,993
NW PAD CORNER	NE PAD CORNER	SE PAD CORNER	SW PAD CORNER
X= 708,913 NAD 27 Y= 377,394	X= 709,408 NAD 27 Y= 377,399	X= 709,411 NAD 27 Y= 377,039	X= 708,916 NAD 27 Y= 377,034
ELEVATION +3157' NAVD 88	ELEVATION +3156' NAVD 88	ELEVATION +3157' NAVD 88	ELEVATION +3156' NAVD 88

SURFACE USE PLAT

Scale: 1" = 200'

200' 0 100' 200'

CHEVRON U.S.A. INC.  
PROPOSED PAD & ACCESS ROAD  
SD WE 15 FED P9 NO. 7H WELL  
SECTIONS 15 & 22, T26S-R32E  
LEA COUNTY, NEW MEXICO

PAGE 1 OF 2



C. H. Fenstermaker & Associates, L.L.C.  
135 Regency Sq. Lafayette, LA 70508  
Ph. 337-237-2200 Fax. 337-232-3299  
www.fenstermaker.com

DRAWN BY: KJD		REVISIONS	
PROJ. MGR.: VHV	No. 1	DATE: 06/02/2016	REVISED BY: BOR
DATE: JUNE 23, 2015	No.	DATE:	REVISED BY:
FILENAME: T:\2015\2152221\DWG\SD WE 15 Fed P9 7H_SUP.dwg			



DISCLAIMER: At this time, C. H. Fenstermaker & Associates, L.L.C. has not performed nor was asked to perform any type of engineering, hydrological modeling, flood plain, or "No Rise" certification analyses, including but not limited to determining whether the project will impact flood hazards in connection with federal/FEMA, state, and/or local laws, ordinances and regulations. Accordingly, Fenstermaker makes no warranty or representation of any kind as to the foregoing issues, and persons or entities using this information shall do so at their own risk.

**NOTE:**

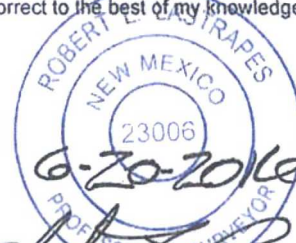
Please be advised, that while reasonable efforts are made to locate and verify pipelines and anomalies using our standard pipeline locating equipment, it is impossible to be 100 % effective. As such, we advise using caution when performing work as there is a possibility that pipelines and other hazards, such as fiber optic cables, PVC pipelines, etc. may exist undetected on site.

**NOTE:**

Many states maintain information centers that establish links between those who dig (excavators) and those who own and operate underground facilities (operators). It is advisable and in most states, law, for the contractor to contact the center for assistance in locating and marking underground utilities. For guidance, New Mexico One Call. [www.nmonecall.org](http://www.nmonecall.org)

FOR THE EXCLUSIVE USE OF  
CHEVRON U.S.A. INC.

I, Robert L. Lastrapes, Professional  
Surveyor, do hereby state this plat is true  
and correct to the best of my knowledge.



Robert L. Lastrapes  
Registration No. 23006

SURFACE USE PLAT

**CHEVRON U.S.A. INC.**  
PROPOSED PAD & ACCESS ROAD  
SD WE 15 FED P9 NO. 7H WELL  
SECTIONS 15 & 22, T26S-R32E  
LEA COUNTY, NEW MEXICO

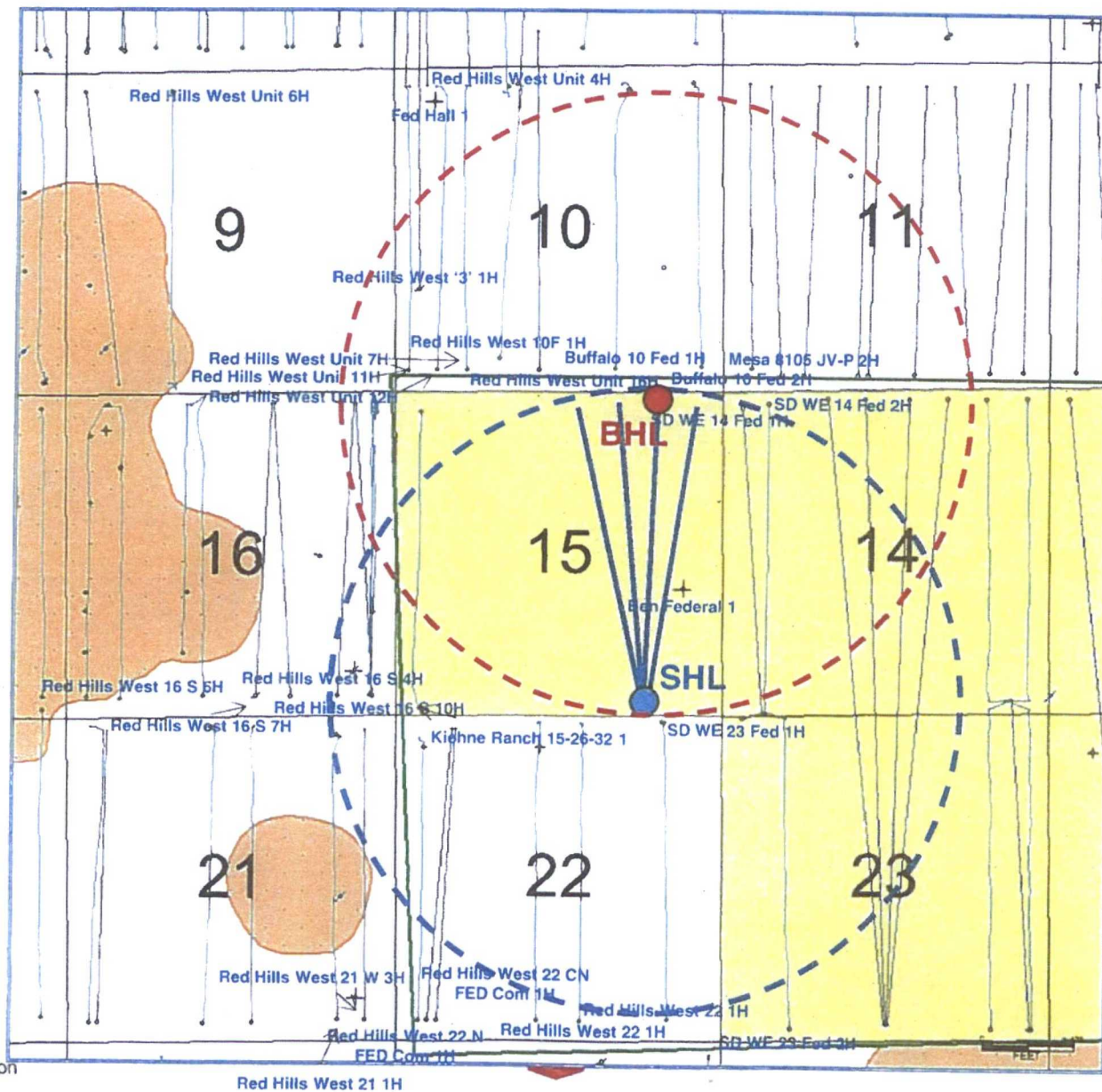
PAGE 2 OF 2



C. H. Fenstermaker & Associates, L.L.C.  
135 Regency Sq. Lafayette, LA 70508  
Ph 337-237-2200 Fax. 337-232-3299  
[www.fenstermaker.com](http://www.fenstermaker.com)

DRAWN BY: KJD		REVISIONS	
PROJ. MGR.: VHV	No. 1	DATE: 06/02/2016	REVISED BY: BOR
DATE: JUNE 23, 2015	No.	DATE:	REVISED BY:
FILENAME: T:\2015\2152221\DWG\SD WE 15 Fed P9 7H_SUP.dwg			

**SD WE 15 Fed P9 7H – Surface & Bottom Hole Location**  
**TWN 26S RNG 32E SEC 15**  
**1 Mile Radius**





# LEGEND

- Section Line
- Centerline Access Road
- Existing Lease Road & Drillsite
- As-Drilled Well
- Fnd. Monument

# R 32 E

## Sec. 15

Bureau of Land Management

(±1.28 Acres-Pad)

FOR THE EXCLUSIVE USE OF  
CHEVRON U.S.A. INC.  
I, Robert L. Lastrapes, Professional  
Surveyor, do hereby state this plat is true  
and correct to the best of my knowledge.



PROPOSED  
ARCHAEOLOGICAL  
AREA  
±5.21 ACRES

T  
26  
S

PROPOSED PAD  
±4.09 ACRES

SD WE 15 Fed P9  
No. 7H Well  
12' FSL  
1421' FEL

Red Hills West 22 Fed Com  
No. 1H Well  
(As-Drilled)

Point of  
Commencement/  
Fnd. 1 1/2" Iron  
Pipe w/Cap

Existing Lease Road

CENTERLINE  
PROPOSED ACCESS ROAD  
14' x ±61.18'  
±0.02 ACRES  
±3.71 Rods

## Sec. 22

Bureau of Land Management

(±2.81 Acres-Pad)

SD WE 15 FED P9 NO. 7H WELL			
X=	709,174	NAD 27	
Y=	377,297		
LAT.	32.035506		
LONG.	103.658314		
X=	750,361	NAD83	
Y=	377,354		
LAT.	32.035631		
LONG.	103.658784		
ELEVATION	+3158' NAVD 88		

NW ARCH. AREA CORNER	NE ARCH. AREA CORNER	SE ARCH. AREA CORNER	SW ARCH. AREA CORNER
X= 708,822 NAD 27 Y= 377,593	X= 709,497 NAD 27 Y= 377,599	X= 709,502 NAD 27 Y= 376,999	X= 708,827 NAD 27 Y= 376,993
NW PAD CORNER	NE PAD CORNER	SE PAD CORNER	SW PAD CORNER
X= 708,913 NAD 27 Y= 377,394	X= 709,408 NAD 27 Y= 377,399	X= 709,411 NAD 27 Y= 377,039	X= 708,916 NAD 27 Y= 377,034
ELEVATION +3157' NAVD 88	ELEVATION +3156' NAVD 88	ELEVATION +3157' NAVD 88	ELEVATION +3156' NAVD 88

SURFACE USE PLAT

Scale: 1" = 200'

200' 0 100' 200'

**CHEVRON U.S.A. INC.**  
PROPOSED PAD & ACCESS ROAD  
SD WE 15 FED P9 NO. 7H WELL  
SECTIONS 15 & 22, T26S-R32E  
LEA COUNTY, NEW MEXICO

PAGE 1 OF 2



C. H. Fenstermaker & Associates, L.L.C.  
135 Regency Sq. Lafayette, LA 70508  
Ph. 337-237-2200 Fax. 337-232-3299  
www.fenstermaker.com

DRAWN BY: KJD

REVISIONS

PROJ. MGR.: VHV

No. 1

DATE: 06/02/2016

REVISED BY: BOR

DATE: JUNE 23, 2015

No.

DATE:

REVISED BY:

FILENAME: T:\2015\2152221\DWG\SD WE 15 Fed P9 7H\_SUP.dwg

DISCLAIMER: At this time, C. H. Fenstermaker & Associates, L.L.C. has not performed nor was asked to perform any type of engineering, hydrological modeling, flood plain, or "No Rise" certification analyses, including but not limited to determining whether the project will impact flood hazards in connection with federal/FEMA, state, and/or local laws, ordinances and regulations. Accordingly, Fenstermaker makes no warranty or representation of any kind as to the foregoing issues, and persons or entities using this information shall do so at their own risk.

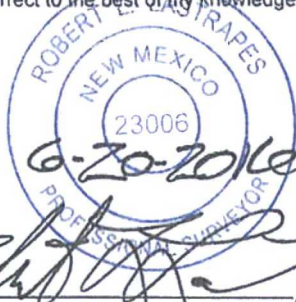
**NOTE:**

Please be advised, that while reasonable efforts are made to locate and verify pipelines and anomalies using our standard pipeline locating equipment, it is impossible to be 100 % effective. As such, we advise using caution when performing work as there is a possibility that pipelines and other hazards, such as fiber optic cables, PVC pipelines, etc. may exist undetected on site.

**NOTE:**

Many states maintain information centers that establish links between those who dig (excavators) and those who own and operate underground facilities (operators). It is advisable and in most states, law, for the contractor to contact the center for assistance in locating and marking underground utilities. For guidance, New Mexico One Call. [www.nmonecall.org](http://www.nmonecall.org)

FOR THE EXCLUSIVE USE OF  
CHEVRON U.S.A. INC.  
I, Robert L. Lastrapes, Professional  
Surveyor, do hereby state this plat is true  
and correct to the best of my knowledge.

  
Robert L. Lastrapes  
Registration No. 23006

**SURFACE USE PLAT**

**CHEVRON U.S.A. INC.**  
PROPOSED PAD & ACCESS ROAD  
SD WE 15 FED P9 NO. 7H WELL  
SECTIONS 15 & 22, T26S-R32E  
LEA COUNTY, NEW MEXICO

PAGE 2 OF 2

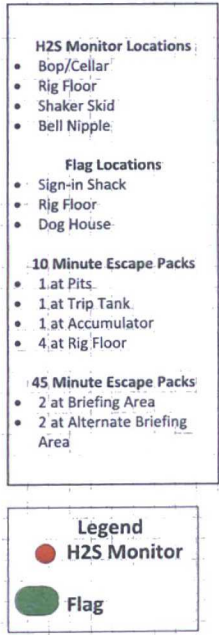
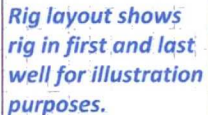


C. H. Fenstermaker & Associates, L.L.C.  
135 Regency Sq. Lafayette, LA 70508  
Ph 337-237-2200 Fax. 337-232-3299  
[www.fenstermaker.com](http://www.fenstermaker.com)

DRAWN BY: KJD		REVISIONS	
PROJ. MGR.: VHV	No. 1	DATE: 06/02/2016	REVISED BY: BOR
DATE: JUNE 23, 2015	No.	DATE:	REVISED BY:
FILENAME: T:\2015\2152221\DWG\SD WE 15 Fed P9 7H_SUP.dwg			



Nabors Pace X SD Sec 15 Pad 9



- Bop/Cellar
- Rig Floor
- Shaker Skid
- Bell Nipple

- Sign-in Shack
- Rig Floor
- Dog House

- 1 at Pits
- 1 at Trip Tank
- 1 at Accumulator
- 4 at Rig Floor

- 2 at Briefing Area
- 2 at Alternate Briefing Area

**Legend**  
 **H2S Monitor**  
 **Flag**

Location  
Entrance

