



# Chevron U.S.A. Inc.



Location: Lea County, NM  
Field: Jennings; Upper Bone Spring (Lea County, NM)  
Facility: SD WE 15 Fed P9

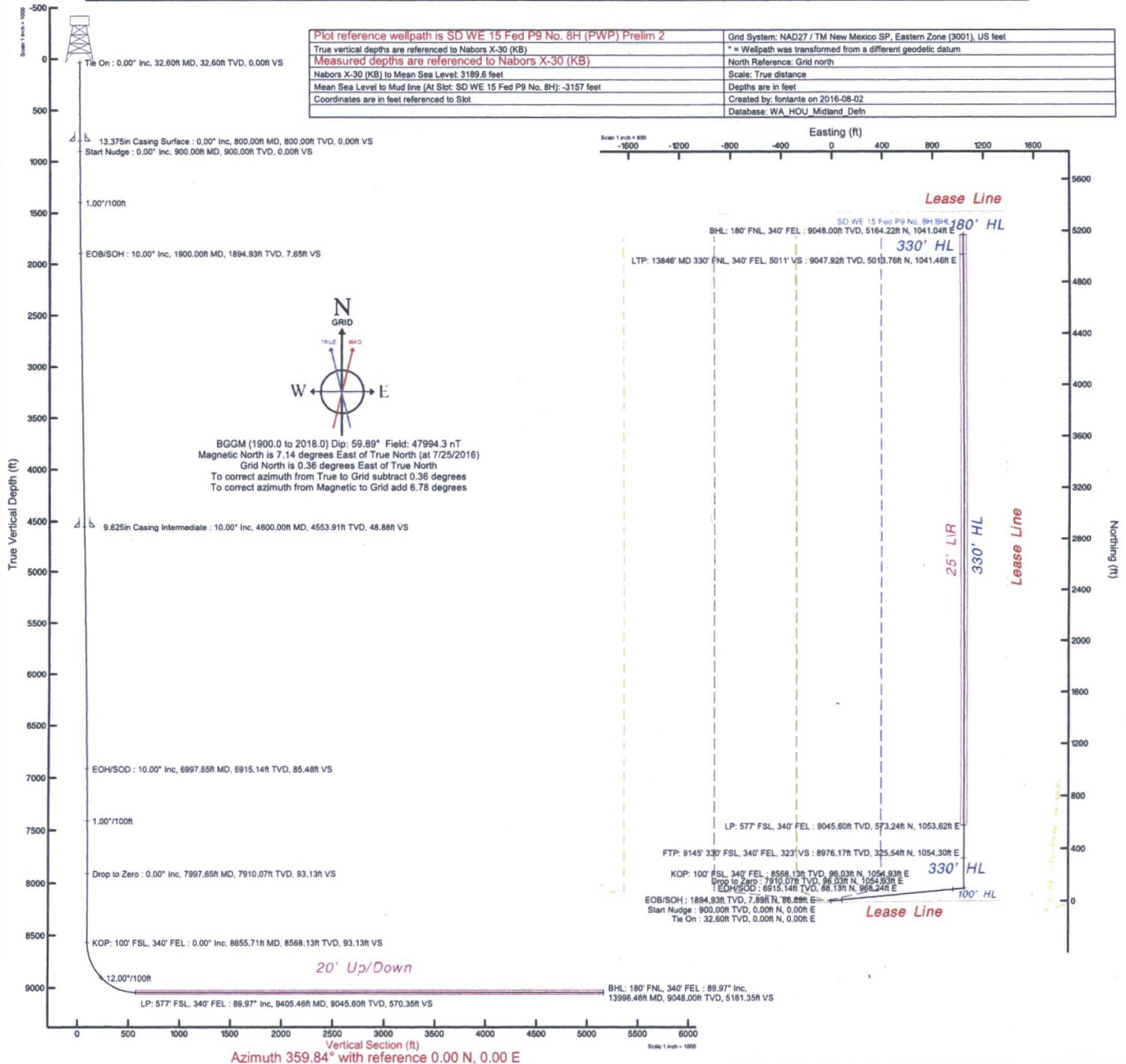
Slot: SD WE 15 Fed P9 No. 8H  
Well: SD WE 15 Fed P9 No. 8H  
Wellbore: SD WE 15 Fed P9 No. 8H (PWB)

Well Profile Data							
Design Comment	MD (ft)	Inc (°)	Az (°)	TVD (ft)	Local N (ft)	Local E (ft)	DLS (°/100ft)
Tie On	32.60	0.000	84.799	32.60	0.00	0.00	0.00
Start Nudge	900.00	0.000	84.799	900.00	0.00	0.00	0.00
EOB/SH	1900.00	10.000	84.799	1894.93	7.89	86.69	1.00
EOH/SOD	6997.65	10.000	84.799	6915.14	86.13	968.24	0.00
Drop to Zero	7997.65	0.000	359.843	7910.07	96.03	1054.93	1.00
KOP: 100' FSL, 340' FEL	8655.71	0.000	359.843	8568.13	96.03	1054.93	0.00
LP: 577' FSL, 340' FEL	9405.46	89.970	359.843	9045.60	573.24	1053.62	12.00
BHL: 180' FNL, 340' FEL	13996.46	89.970	359.843	9048.00	5164.22	1041.04	0.00

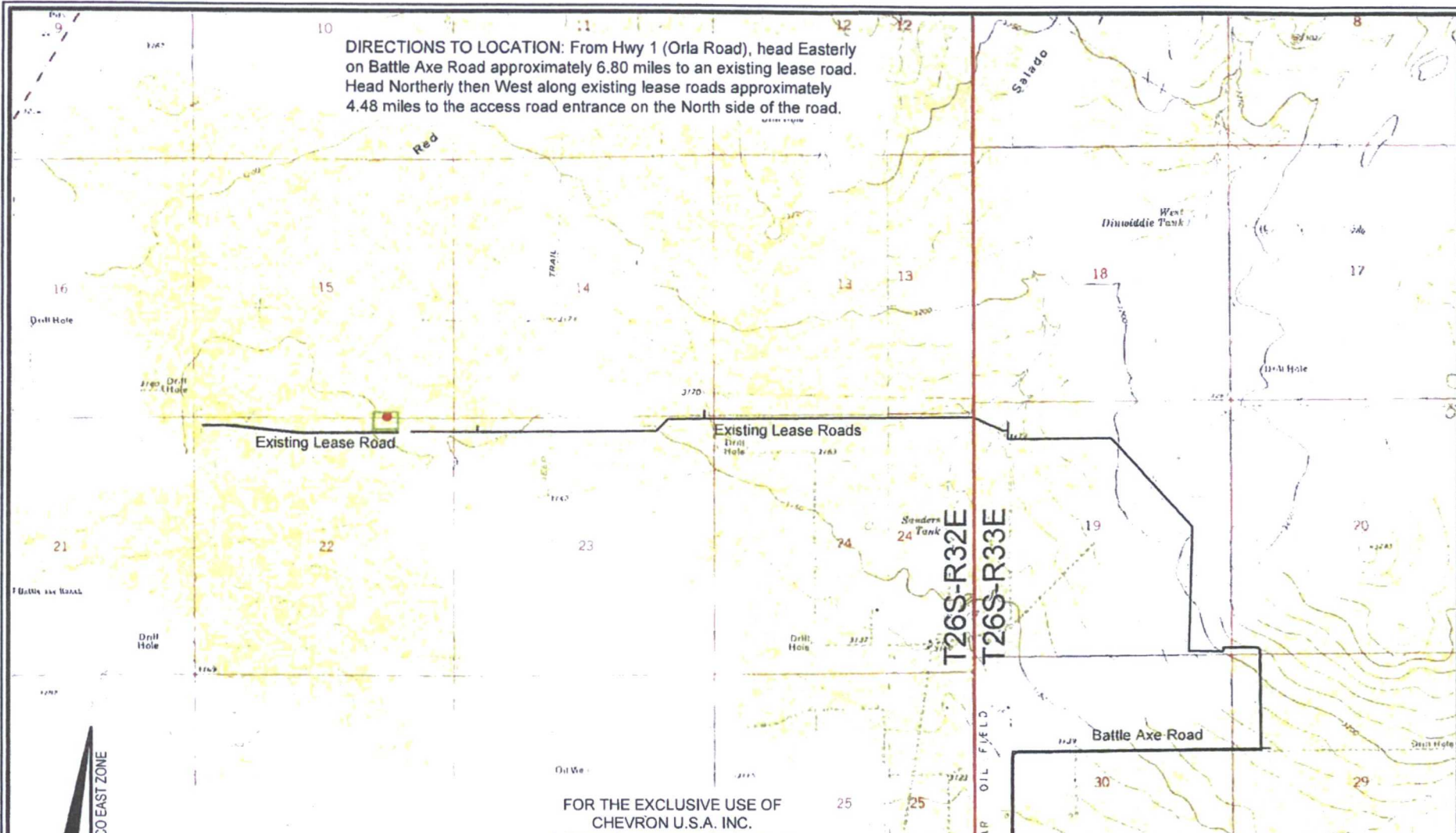
Wellpath Comments							
MD (ft)	X (ft)	Y (ft)	TVD (ft)	Inclination (°)	Azimuth (°)	VS (ft)	Comment
9145.00	1054.30	325.54	8976.17	58.714	359.843	322.65	FTP: 9145' 330' FSL, 340' FEL, 323' VS
13846.00	1041.46	5013.76	9047.92	89.970	359.843	5010.88	LTP: 13846' MD 330' FNL, 340' FEL, 5011' VS

Location Information							
Facility Name				Grid East (US ft)	Grid North (US ft)	Latitude	Longitude
SD WE 15 Fed P9				709124.000	377296.000	32°02'07.819"N	103°39'30.510"W
Slot				Grid East (US ft)	Grid North (US ft)	Latitude	Longitude
SD WE 15 Fed P9 No. 8H				709199.000	377297.000	32°02'07.824"N	103°39'29.638"W
Nabors X-30 (KB) to Mud line (At Slot: SD WE 15 Fed P9 No. 8H)						32.6ft	
Mean Sea Level to Mud line (At Slot: SD WE 15 Fed P9 No. 8H)						-3157ft	
Nabors X-30 (KB) to Mean Sea Level						3189.6ft	

Bottom Hole Location									
MD (ft)	Inc (°)	Az (°)	TVD (ft)	Local N (ft)	Local E (ft)	Grid East (US ft)	Grid North (US ft)	Latitude	Longitude
13996.46	89.970	359.843	9048.00	5164.22	1041.04	710240.00	382461.00	32°02'58.863"N	103°39'17.168"W



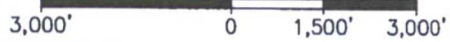
**DIRECTIONS TO LOCATION:** From Hwy 1 (Orla Road), head Easterly on Battle Axe Road approximately 6.80 miles to an existing lease road. Head Northerly then West along existing lease roads approximately 4.48 miles to the access road entrance on the North side of the road.



**LEGEND**

- Proposed Well
- Proposed Access Road
- Proposed Drillsite
- Existing Road
- Section Line

Scale: 1" = 3,000'



C. H. Fenstermaker & Associates, L.L.C.  
135 Regency Sq. Lafayette, LA 70508  
Ph. 337-237-2200 Fax. 337-232-3299  
www.fenstermaker.com

FOR THE EXCLUSIVE USE OF  
CHEVRON U.S.A. INC.  
I, Robert L. Lastrapes, Professional  
Surveyor, do hereby state this plat is true  
and correct to the best of my knowledge.

ROBERT L. LASTRAPES  
NEW MEXICO  
23006  
6.20.2016  
PROFESSIONAL SURVEYOR  
Robert L. Lastrapes  
Registration No. 23006

**VICINITY MAP**

**CHEVRON U.S.A. INC.**  
SD WE 15 FED P9 NO. 8H WELL  
LOCATED 12' FSL & 1396' FEL  
SECTION 15, T26S-R32E  
LEA COUNTY, NEW MEXICO

DRAWN BY: KJD		REVISIONS	
PROJ. MGR.: VHV	No. 1	DATE: 06/02/2016	REVISED BY: BOR
DATE: JUNE 23, 2015	No.	DATE:	REVISED BY:
FILENAME: T:\2015\215222\DWG\SD WE 15 Fed P9 8H_APD.dwg			



# LEGEND

- Section Line
- Centerline Access Road
- Existing Lease Road & Drillsite
- ☆ As-Drilled Well
- Fnd. Monument

R 32 E

Sec. 15

Bureau of Land Management

(±1.28 Acres-Pad)

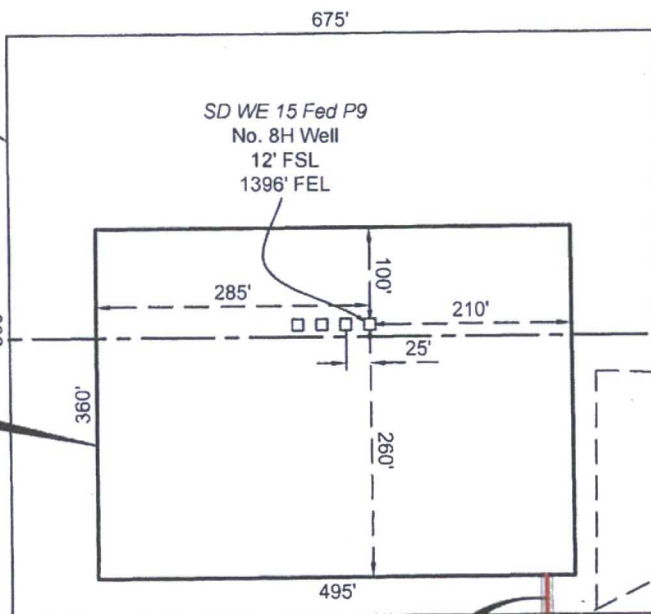
FOR THE EXCLUSIVE USE OF  
CHEVRON U.S.A. INC.  
I, Robert L. Lastrapes, Professional  
Surveyor, do hereby state this plat is true  
and correct to the best of my knowledge.

ROBERT L. LASTRAPES  
NEW MEXICO  
23006  
6-20-2016  
PROFESSIONAL SURVEYOR  
Robert L. Lastrapes  
Registration No. 23006

PROPOSED  
ARCHAEOLOGICAL  
AREA  
±5.21 ACRES

T  
26  
S

PROPOSED PAD  
±4.09 ACRES



Red Hills West 22 Fed Com  
No. 1H Well  
(As-Drilled)

Point of  
Commencement/  
Fnd. 1 1/2" Iron  
Pipe w/Cap

Existing Lease Road

CENTERLINE  
PROPOSED ACCESS ROAD  
14' x ±61.18'  
±0.02 ACRES  
±3.71 Rods

Sec. 22

Bureau of Land Management

(±2.81 Acres-Pad)

SD WE 15 FED P9 NO. 8H WELL	
X=	709,199 NAD 27
Y=	377,297
LAT.	32.035506
LONG.	103.658233
X=	750,386 NAD83
Y=	377,354
LAT.	32.035631
LONG.	103.658703
ELEVATION	+3157' NAVD 88

NW ARCH. AREA CORNER	NE ARCH. AREA CORNER	SE ARCH. AREA CORNER	SW ARCH. AREA CORNER
X= 708,822 NAD 27 Y= 377,593	X= 709,497 NAD 27 Y= 377,599	X= 709,502 NAD 27 Y= 376,999	X= 708,827 NAD 27 Y= 376,993
NW PAD CORNER	NE PAD CORNER	SE PAD CORNER	SW PAD CORNER
X= 708,913 NAD 27 Y= 377,394	X= 709,408 NAD 27 Y= 377,399	X= 709,411 NAD 27 Y= 377,039	X= 708,916 NAD 27 Y= 377,034
ELEVATION +3157' NAVD 88	ELEVATION +3157' NAVD 88	ELEVATION +3157' NAVD 88	ELEVATION +3156' NAVD 88

SURFACE USE PLAT

Scale: 1" = 200'

200' 0 100' 200'

CHEVRON U.S.A. INC.  
PROPOSED PAD & ACCESS ROAD  
SD WE 15 FED P9 NO. 8H WELL  
SECTIONS 15 & 22, T26S-R32E  
LEA COUNTY, NEW MEXICO

PAGE 1 OF 2



C. H. Fenstermaker & Associates, L.L.C.  
135 Regency Sq. Lafayette, LA 70508  
Ph. 337-237-2200 Fax 337-232-3299  
www.fenstermaker.com

DRAWN BY: KJD

REVISIONS

PROJ. MGR.: VHV

No. 1

DATE: 06/02/2016

REVISED BY: BOR

DATE: JUNE 23, 2015

No.

DATE:

REVISED BY:

FILENAME: T:\2015\215222\DWG\SD WE 15 Fed P9 8H\_SUP.dwg

DISCLAIMER: At this time, C. H. Fenstermaker & Associates, L.L.C. has not performed nor was asked to perform any type of engineering, hydrological modeling, flood plain, or "No Rise" certification analyses, including but not limited to determining whether the project will impact flood hazards in connection with federal/FEMA, state, and/or local laws, ordinances and regulations. Accordingly, Fenstermaker makes no warranty or representation of any kind as to the foregoing issues, and persons or entities using this information shall do so at their own risk.

**NOTE:**

Please be advised, that while reasonable efforts are made to locate and verify pipelines and anomalies using our standard pipeline locating equipment, it is impossible to be 100 % effective. As such, we advise using caution when performing work as there is a possibility that pipelines and other hazards, such as fiber optic cables, PVC pipelines, etc. may exist undetected on site.

**NOTE:**

Many states maintain information centers that establish links between those who dig (excavators) and those who own and operate underground facilities (operators). It is advisable and in most states, law, for the contractor to contact the center for assistance in locating and marking underground utilities. For guidance, New Mexico One Call. [www.nmonecall.org](http://www.nmonecall.org)

FOR THE EXCLUSIVE USE OF  
CHEVRON U.S.A. INC.  
I, Robert L. Lastrapes, Professional  
Surveyor, do hereby state this plat is true  
and correct to the best of my knowledge.

ROBERT L. LASTRAPES  
NEW MEXICO  
23006  
6-20-2016  
PROFESSIONAL SURVEYOR  
*[Signature]*  
Robert L. Lastrapes  
Registration No. 23006

SURFACE USE PLAT

**CHEVRON U.S.A. INC.**  
PROPOSED PAD & ACCESS ROAD  
SD WE 15 FED P9 NO. 8H WELL  
SECTIONS 15 & 22, T26S-R32E  
LEA COUNTY, NEW MEXICO

PAGE 2 OF 2



C. H. Fenstermaker & Associates, L.L.C.  
135 Regency Sq Lafayette, LA 70508  
Ph 337-237-2200 Fax 337-232-3299  
[www.fenstermaker.com](http://www.fenstermaker.com)

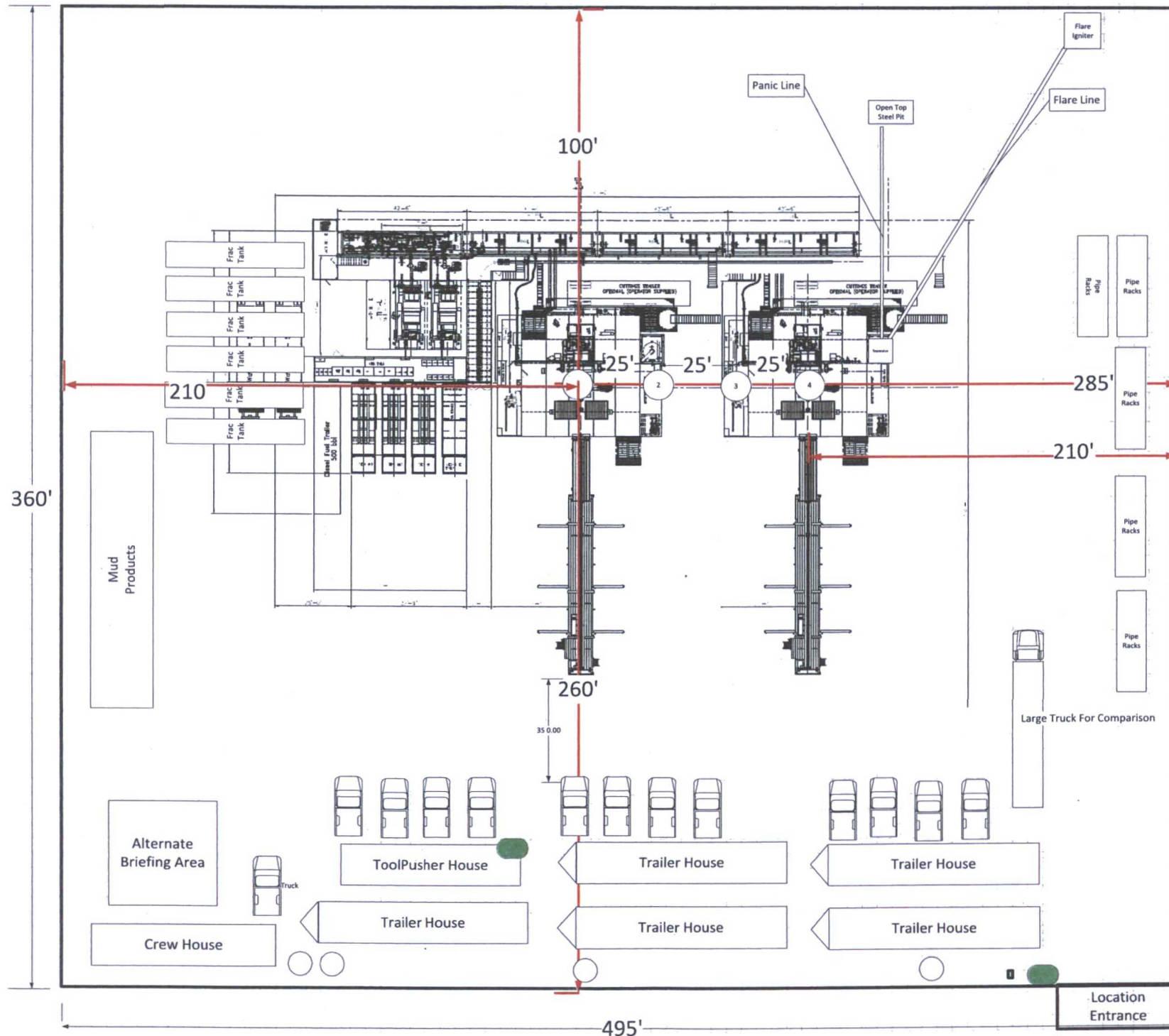
DRAWN BY: KJD		REVISIONS	
PROJ. MGR.: VHV	No. 1	DATE: 06/02/2016	REVISED BY: BOR
DATE: JUNE 23, 2015	No.	DATE:	REVISED BY:
FILENAME: T:\2015\215222\DWG\SD WE 15 Fed P9 8H_SUP.dwg			



# Nabors Pace X SD Sec 15 Pad 9



*Rig layout shows rig in first and last well for illustration purposes.*



- H2S Monitor Locations**
- Bop/Cellar
  - Rig Floor
  - Shaker Skid
  - Bell Nipple

**Flag Locations**

- Sign-in Shack
- Rig Floor
- Dog House

**10 Minute Escape Packs**

- 1 at Pits
- 1 at Trip Tank
- 1 at Accumulator
- 4 at Rig Floor

**45 Minute Escape Packs**

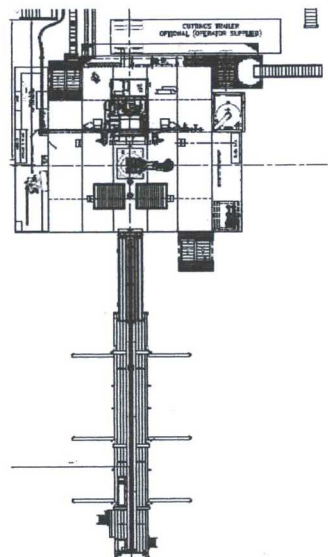
- 2 at Briefing Area
- 2 at Alternate Briefing Area

**Legend**

● H2S Monitor

● Flag

Location Entrance



R 32 E

Sec. 15

Bureau of Land Management

Sec. 14

Bureau of Land Management

T  
26  
S

Proposed Pad 12 Flowline Cluster  
±5914'  
Proposed Pad 12 Temporary Water Line  
±10,541'  
Proposed Pad 9 Flowline Cluster  
±4,888'  
Proposed Pad 9 Temporary Water Line  
±8,076'

Proposed 50' Wide  
PL ROW

Existing  
Battery  
Pad

Existing  
Compressor  
Pad

Existing Drive  
SRD 11.25  
Pad

Pad 1

Proposed  
Flow  
Pad

Pad 12

Proposed 50' Wide PL ROW  
(Pad 9 to Pad 12)

Pad 9

Pad 3

Proposed Extension

Existing Lease Road

Proposed  
Access  
Road

Proposed  
Access  
Road

Existing Pad  
11H 1H Pad

Sec. 22

Bureau of Land Management

Sec. 23

Bureau of Land Management

Sec. 24

Bureau of Land Management

NAD 27 NEW MEXICO EAST ZONE



Scale: 1" = 1000'

1000' 0 500' 1000'



C. H. Fenstermaker & Associates, L.L.C.  
135 Regency Sq. Lafayette, LA 70508  
Ph. 337-237-2200 Fax. 337-232-3299  
www.fenstermaker.com

CHEVRON U.S.A. INC.

WORK AREA DETAIL FOR THE  
SD WE 15 FED P9 & P12 1H-8H WELLS  
SECTIONS 15, 22, 23 & 24, T26S-R32E  
LEA COUNTY, NEW MEXICO

DRAWN BY: VHV

REVISIONS

PROJ. MGR.: VHV

No. #

DATE:

REVISED BY:

DATE: JULY 26, 2016

No. #

DATE:

REVISED BY:

FILENAME: T:\2015\2152215\DWG\Pad 9\_Pad 12\_AerialDetail.dwg



# LEGEND

- Section Line
- Centerline Access Road
- Existing Lease Road & Drillsite
- ☼ As-Drilled Well
- Fnd. Monument

R 32 E

FOR THE EXCLUSIVE USE OF  
CHEVRON U.S.A. INC.  
I, Robert L. Lastrapes, Professional  
Surveyor, do hereby state this plat is true  
and correct to the best of my knowledge.

Sec. 15

Bureau of Land Management

(±1.28 Acres-Pad)

Future Interim  
Reclamation Area

ROBERT L. LASTRAPES  
NEW MEXICO  
23006  
6-20-2016  
PROFESSIONAL SURVEYOR  
Robert L. Lastrapes  
Registration No. 23006

PROPOSED  
ARCHAEOLOGICAL  
AREA  
±5.21 ACRES

T  
26  
S

PROPOSED PAD  
±4.09 ACRES

SD WE 15 Fed P9  
No. 8H Well  
12' FSL  
1396' FEL

Red Hills West 22 Fed Com  
No. 1H Well  
(As-Drilled)

Point of  
Commencement/  
Fnd. 1 1/2" Iron  
Pipe w/Cap

Existing Lease Road

CENTERLINE  
PROPOSED ACCESS ROAD  
14' x ±61.18'  
±0.02 ACRES  
±3.71 Rods

Sec. 22

Bureau of Land Management

(±2.81 Acres-Pad)

SD WE 15 FED P9 NO. 8H WELL	
X=	709,199 NAD 27
Y=	377,297
LAT.	32.035506
LONG.	103.658233
X=	750,386 NAD83
Y=	377,354
LAT.	32.035631
LONG.	103.658703
ELEVATION +3157' NAVD 88	

NW ARCH. AREA CORNER		NE ARCH. AREA CORNER		SE ARCH. AREA CORNER		SW ARCH. AREA CORNER	
X=	708,822 NAD 27	X=	709,497 NAD 27	X=	709,502 NAD 27	X=	708,827 NAD 27
Y=	377,593	Y=	377,599	Y=	376,999	Y=	376,993
NW PAD CORNER		NE PAD CORNER		SE PAD CORNER		SW PAD CORNER	
X=	708,913 NAD 27	X=	709,408 NAD 27	X=	709,411 NAD 27	X=	708,916 NAD 27
Y=	377,394	Y=	377,399	Y=	377,039	Y=	377,034
ELEVATION +3157' NAVD 88		ELEVATION +3157' NAVD 88		ELEVATION +3157' NAVD 88		ELEVATION +3156' NAVD 88	

SURFACE USE PLAT

Scale: 1" = 200'

200' 0 100' 200'

CHEVRON U.S.A. INC.  
PROPOSED PAD & ACCESS ROAD  
SD WE 15 FED P9 NO. 8H WELL  
SECTIONS 15 & 22, T26S-R32E  
LEA COUNTY, NEW MEXICO

PAGE 1 OF 2



C H Fenstermaker & Associates, L.L.C  
135 Regency Sq. Lafayette, LA 70508  
Ph. 337-237-2200 Fax 337-232-3299  
www.fenstermaker.com

DRAWN BY: KJD

REVISIONS

PROJ. MGR: VHV

No. 1

DATE: 06/02/2016

REVISED BY: BOR

DATE: JUNE 23, 2015

No.

DATE:

REVISED BY:

FILENAME: T:\2015\215222\DWG\SD WE 15 Fed P9 8H\_SUP.dwg



DISCLAIMER: At this time, C. H. Fenstermaker & Associates, L.L.C. has not performed nor was asked to perform any type of engineering, hydrological modeling, flood plain, or "No Rise" certification analyses, including but not limited to determining whether the project will impact flood hazards in connection with federal/FEMA, state, and/or local laws, ordinances and regulations. Accordingly, Fenstermaker makes no warranty or representation of any kind as to the foregoing issues, and persons or entities using this information shall do so at their own risk.

**NOTE:**

Please be advised, that while reasonable efforts are made to locate and verify pipelines and anomalies using our standard pipeline locating equipment, it is impossible to be 100 % effective. As such, we advise using caution when performing work as there is a possibility that pipelines and other hazards, such as fiber optic cables, PVC pipelines, etc. may exist undetected on site.

**NOTE:**

Many states maintain information centers that establish links between those who dig (excavators) and those who own and operate underground facilities (operators). It is advisable and in most states, law, for the contractor to contact the center for assistance in locating and marking underground utilities. For guidance, New Mexico One Call. [www.nmonecall.org](http://www.nmonecall.org)

FOR THE EXCLUSIVE USE OF  
CHEVRON U.S.A. INC.

I, Robert L. Lastrapes, Professional  
Surveyor, do hereby state this plat is true  
and correct to the best of my knowledge.

ROBERT L. LASTRAPES  
NEW MEXICO  
23006  
6-20-2016  
PROFESSIONAL SURVEYOR  
Robert L. Lastrapes  
Registration No. 23006

**SURFACE USE PLAT**

**CHEVRON U.S.A. INC.**  
PROPOSED PAD & ACCESS ROAD  
SD WE 15 FED P9 NO. 8H WELL  
SECTIONS 15 & 22, T26S-R32E  
LEA COUNTY, NEW MEXICO

PAGE 2 OF 2



C. H. Fenstermaker & Associates, L.L.C.  
135 Regency Sq. Lafayette, LA 70508  
Ph 337-237-2200 Fax: 337-232-3299  
[www.fenstermaker.com](http://www.fenstermaker.com)

DRAWN BY: KJD		REVISIONS	
PROJ. MGR.: VHV	No. 1	DATE: 06/02/2016	REVISED BY: BOR
DATE: JUNE 23, 2015	No.	DATE:	REVISED BY:
FILENAME: T:\2015\2152222\DWG\SD WE 15 Fed P9 8H_SUP.dwg			