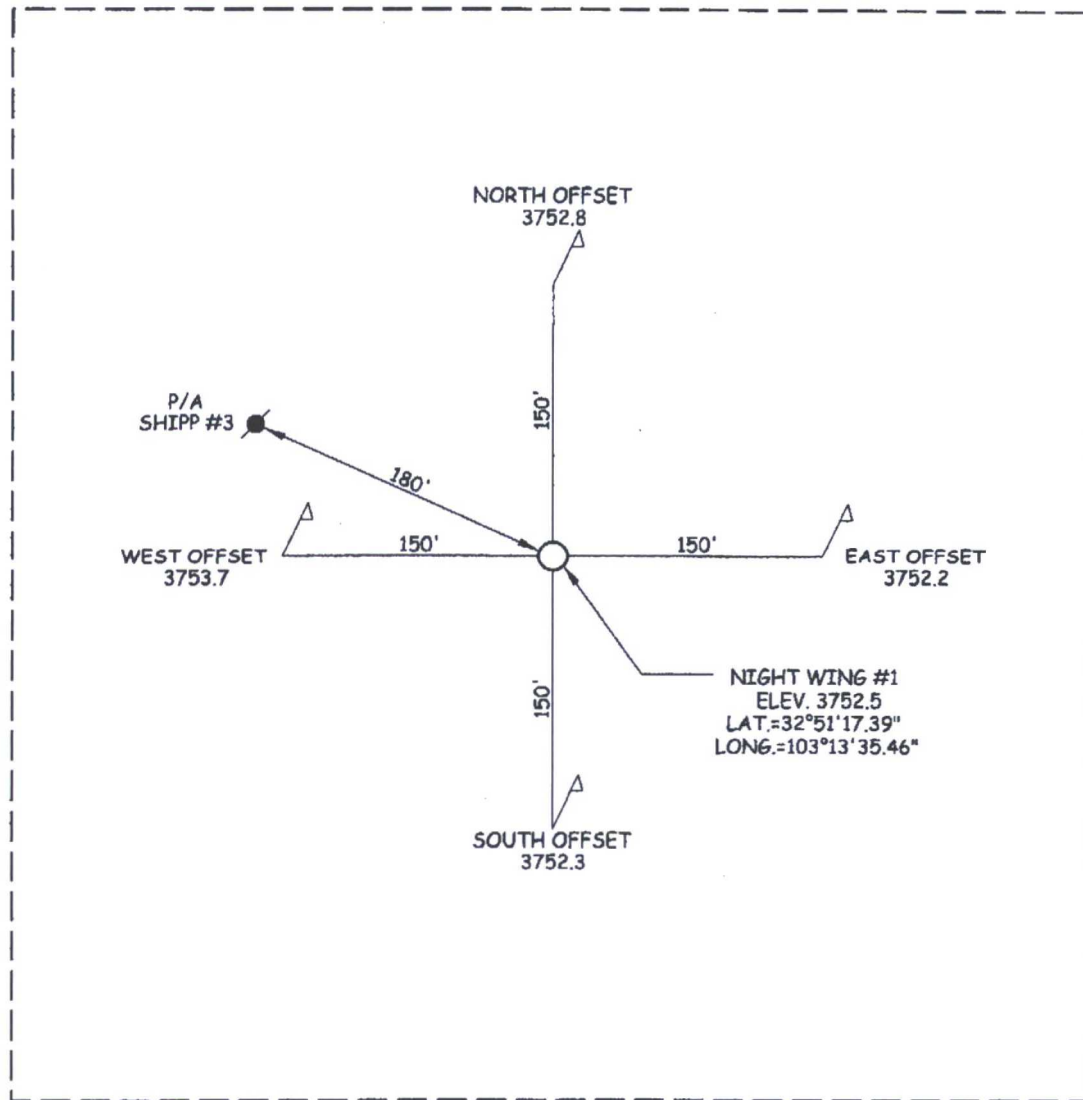


SECTION 11, TOWNSHIP 17 SOUTH, RANGE 37 EAST, N.M.P.M.  
LEA COUNTY, NEW MEXICO



DIRECTIONS TO LOCATION

FROM THE CENTER OF LOVINGTON, NEW MEXICO TRAVEL  
SOUTHEAST ALONG STATE HWY. 18 APPROX. 6.55 MILES,  
TURN LEFT ON W. STILES ROAD AND GO EAST APPROX.  
2.8 MILES, LOCATION IS LOCATED 582 FEET SOUTH,

NIGHT WING #1  
LOCATED 582 FEET FROM THE NORTH LINE  
AND 1154 FEET FROM THE WEST LINE OF  
SECTION 11, TOWNSHIP 17 SOUTH, RANGE  
37 EAST, N.M.P.M.,  
LEA COUNTY, NEW MEXICO

SCALE: 1" = 100'	REVISION:	PLAT DATE: 2-16-17
CLIENT: TEXLAND-HOBBS, LLC		
DRAWN BY: B. BURROW	SURVEY DATE: 2-15-17	
SURVEYED BY: J.M. MARTIN	FIELD BOOK: 448, PG. 64	
FILE: 38234.dgn	FILE NO. 38,234	SHEET NO. 1

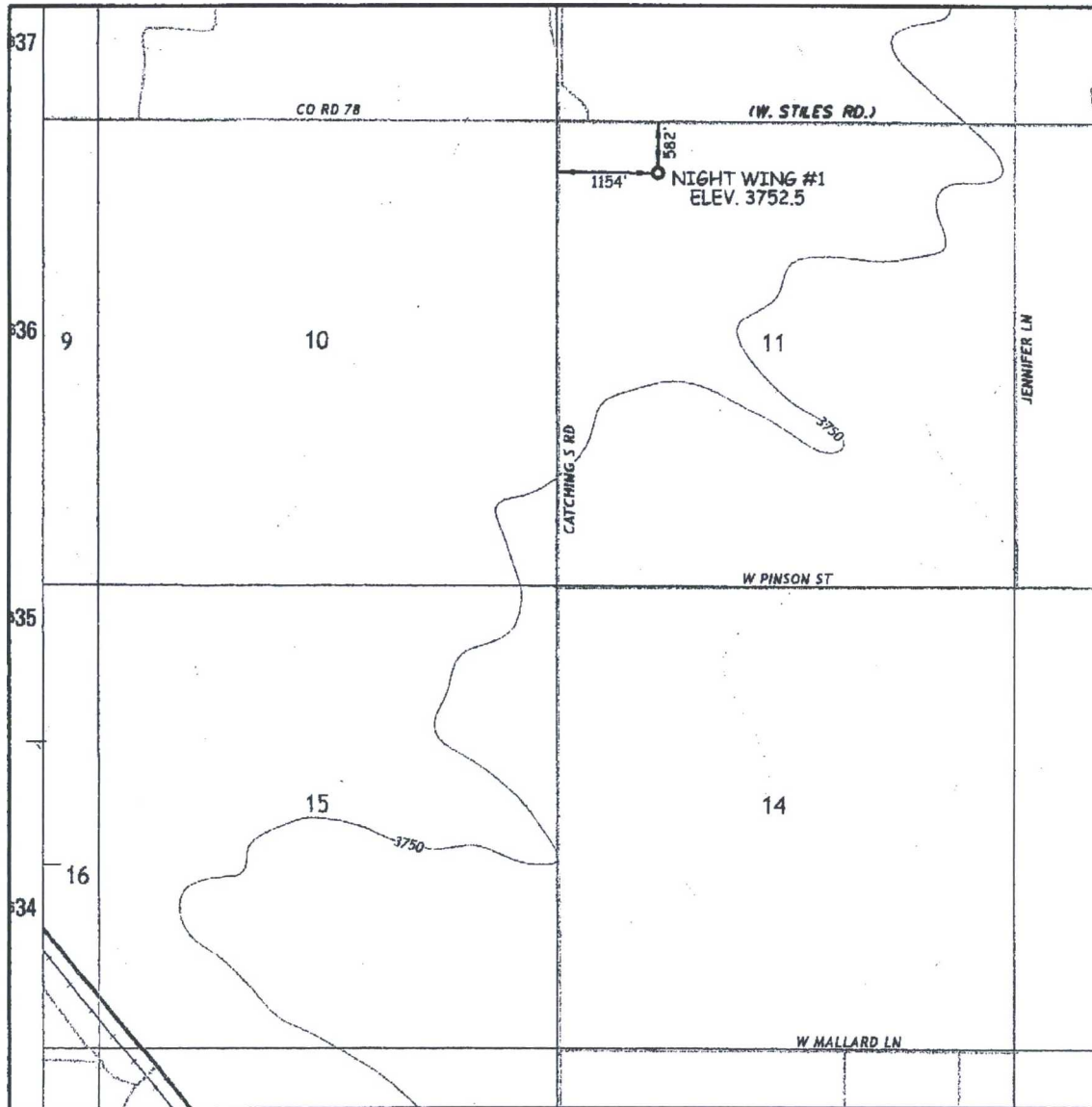


**WILSON SURVEYING Co., INC.**  
Registered Professional Land Surveyors

3330 - 70th Street, Suite 201 • Lubbock, Texas 79413  
Office 806.792.4731 Firm No. 10074700



# LOCATION VERIFICATION MAP



U.S.G.S. TOPOGRAPHIC MAP - HUMBLE CITY, N.M.

Operator: TEXLAND-HOBBS, LLC Lease: NIGHT WING

Description 582 FEET FROM THE NORTH LINE AND 1154 FEET FROM THE WEST LINE

Section	Township	Range	Survey	County
11	17-S	37-E	N.M.P.M.	LEA



**WILSON SURVEYING Co., INC.**  
 Registered Professional Land Surveyors  
 Global Positioning System Surveyors

3330 70th ST., SUITE 201 • LUBBOCK, TX. 79413  
 (806) 792-4731 • FIRM NO. 10074700

