

SITE MAP

EL. 3629.4' 600' EL. 3632.4'

200' NORTH OFFSET
 EL. 3629.8'

EL. 3627.6' EL. 3630.8'

N89°57'02"E 349.91 FT

PROPOSED PAD

3" POLY SURF.

30'

175' 175'

200'

NORTH LEA 9 FED COM 4H
 ELEV. = 3627.1'
 2.813± = ACRES

175' WEST OFFSET
 EL. 3627.4'

EXISTING TRUMAN FEDERAL 7

350.08 FT

150'

00°00'12"E

LAT. = 32°35'48.271"N(NAD83)
 LONG. = 103°34'10.982"W

175' EAST OFFSET
 EL. 3628.3'

TOPSOIL AREA

350.16 FT

00°00'27"E

BERM

EL. 3627.4' EL. 3628.6'

150' SOUTH OFFSET
 EL. 3627.2'

EXISTING PAD

PROPOSED 263 LF ACCESS ROAD

EL. 3628.6' 600' EL. 3628.1'



SCALE 1" = 120'

DIRECTIONS TO LOCATION

FROM MILE MARKER #78 ON HWY 62-180 GOING EAST GO APPROX. 0.2 OF A MILE TO A LEASE ROAD ON RIGHT (SOUTH) TURN SOUTH GO APPROX. 0.42 OF A MILE ROAD TURNS RIGHT (WEST) TURN WEST GO APPROX. 0.24 OF A MILE ROAD TURNS LEFT (SOUTH) TURN SOUTH GO APPROX. 0.65 OF A MILE TO "T" INTERSECTION TURN RIGHT (WEST) GO WEST APPROX. 0.23 OF A MILE TO A LEASE ROAD ON LEFT (SOUTH) TURN SOUTH GO APPROX. 0.14 OF A MILE ROAD TURNS LEFT (EAST) TURN EAST GO 65' TO SOUTHWEST PAD CORNER OF EXISTING TRUMAN FEDERAL 7, THEN GO EAST 263' TO THE SOUTHWEST PAD CORNER FOR THIS LOCATION.

READ & STEVENS, INC.
NORTH LEA 9 FED COM 4H
LOCATED 660 FT. FROM THE SOUTH LINE
AND 1275 FT. FROM THE WEST LINE OF
SECTION 4, TOWNSHIP 20 SOUTH,
RANGE 34 EAST, N.M.P.M.
LEA COUNTY, STATE OF NEW MEXICO

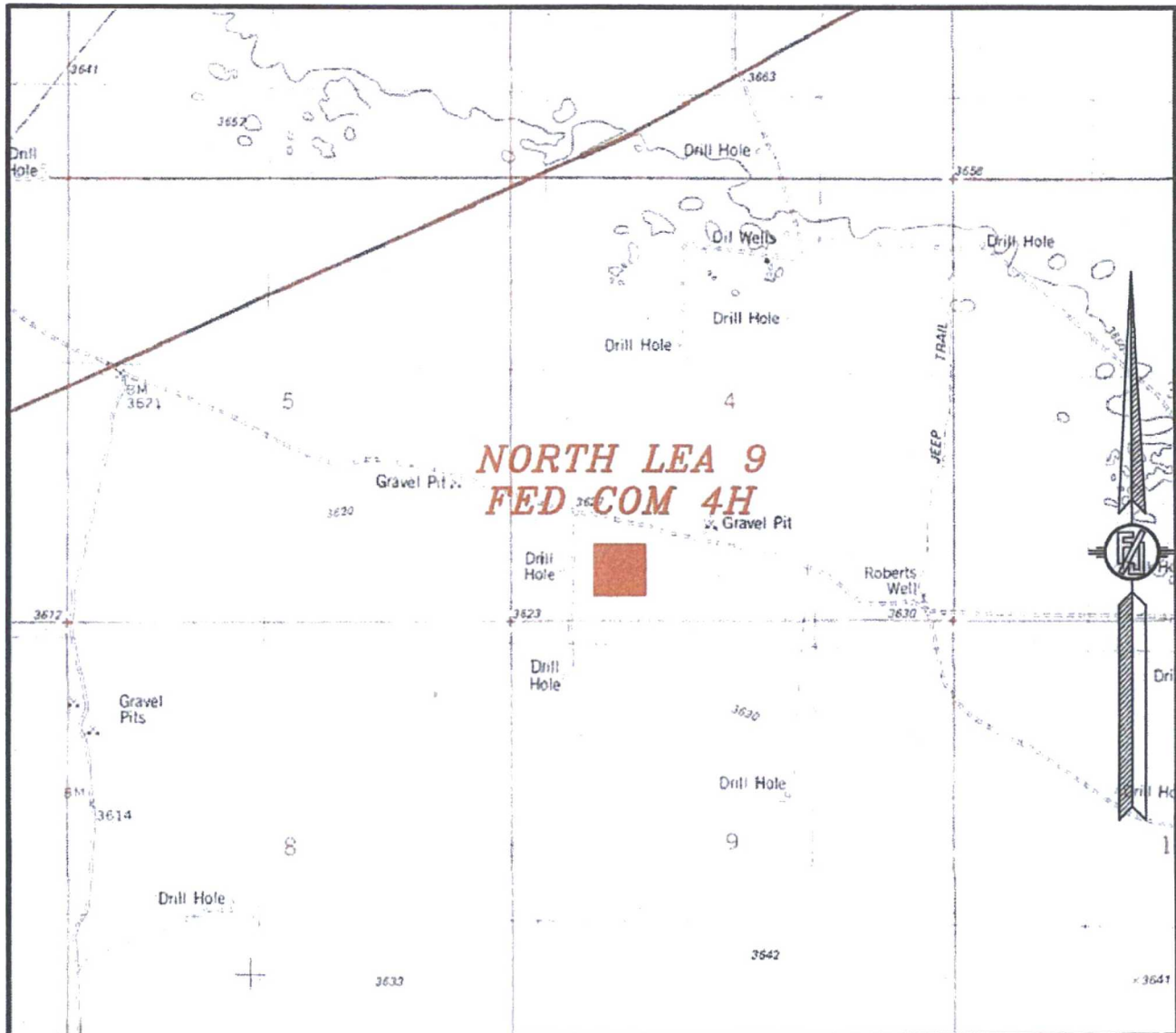
JULY 19, 2016

SURVEY NO. 1910A

MADRON SURVEYING, INC. 301 SOUTH CANAL (575) 234-3341 CARLSBAD, NEW MEXICO

301 SOUTH CANAL
(575) 234-3341

SECTION 4, TOWNSHIP 20 SOUTH, RANGE 34 EAST, N.M.P.M.
LEA COUNTY, STATE OF NEW MEXICO
LOCATION VERIFICATION MAP



USGS QUAD MAP:
LEA

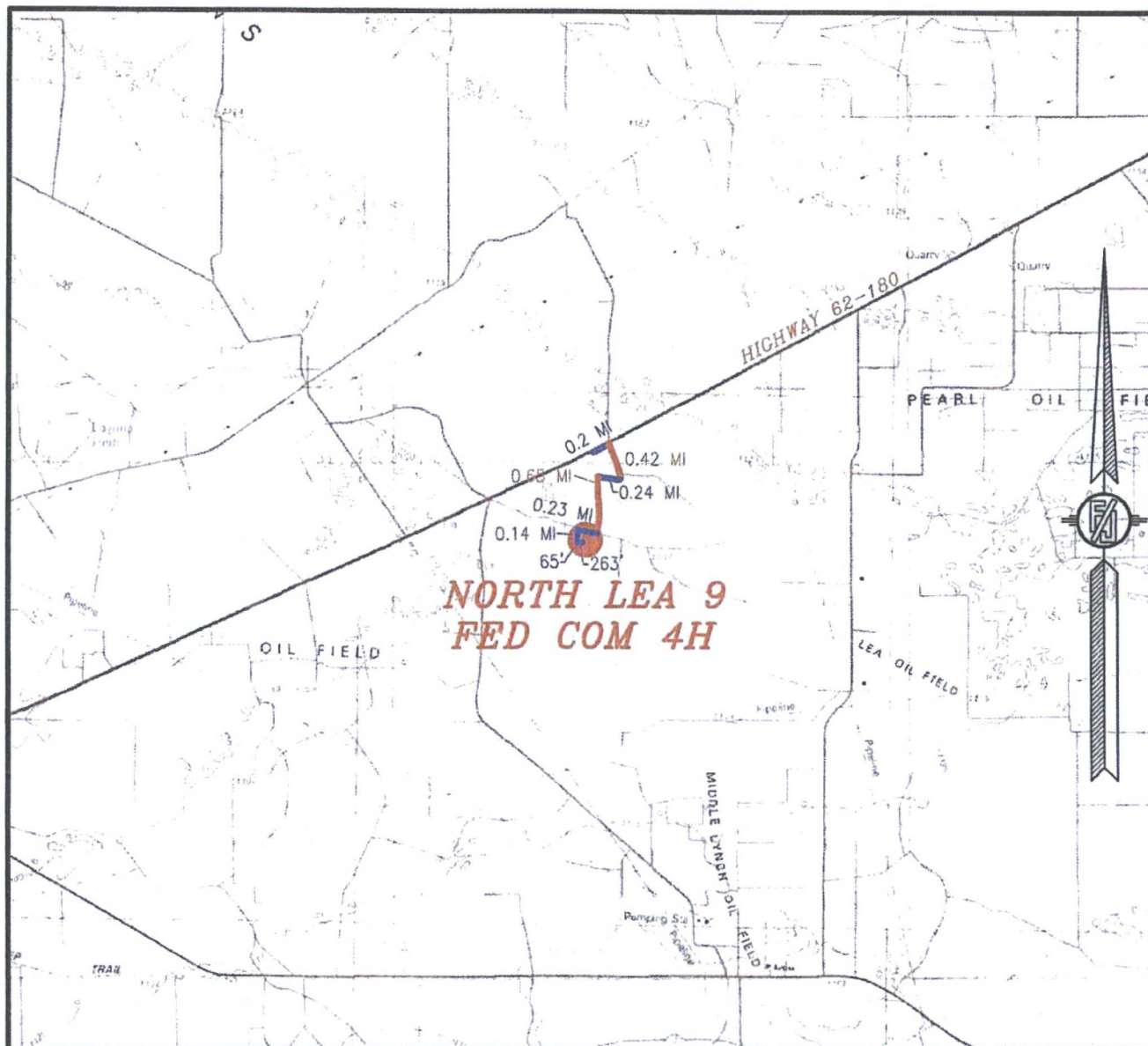
NOT TO SCALE

READ & STEVENS, INC.
NORTH LEA 9 FED COM 4H
LOCATED 660 FT. FROM THE SOUTH LINE
AND 1275 FT. FROM THE WEST LINE OF
SECTION 4, TOWNSHIP 20 SOUTH,
RANGE 34 EAST, N.M.P.M.
LEA COUNTY, STATE OF NEW MEXICO

JULY 19, 2016

MADRON SURVEYING, INC. 301 SOUTH CANAL (575) 234-3341 CARLSBAD, NEW MEXICO SURVEY NO. 1910A

SECTION 4, TOWNSHIP 20 SOUTH, RANGE 34 EAST, N.M.P.M.
LEA COUNTY, STATE OF NEW MEXICO
VICINITY MAP



DISTANCES IN MILES

NOT TO SCALE

DIRECTIONS TO LOCATION

FROM MILE MARKER #78 ON HWY 62-180 GOING EAST GO APPROX. 0.2 OF A MILE TO A LEASE ROAD ON RIGHT (SOUTH) TURN SOUTH GO APPROX. 0.42 OF A MILE ROAD TURNS RIGHT (WEST) TURN WEST GO APPROX. 0.24 OF A MILE ROAD TURNS LEFT (SOUTH) TURN SOUTH GO APPROX. 0.65 OF A MILE TO "T" INTERSECTION TURN RIGHT (WEST) GO WEST APPROX. 0.23 OF A MILE TO A LEASE ROAD ON LEFT (SOUTH) TURN SOUTH GO APPROX. 0.14 OF A MILE ROAD TURNS LEFT (EAST) TURN EAST GO 65' TO SOUTHWEST PAD CORNER OF EXISTING TRUMAN FEDERAL 7, THEN GO EAST 263' TO THE SOUTHWEST PAD CORNER FOR THIS LOCATION.

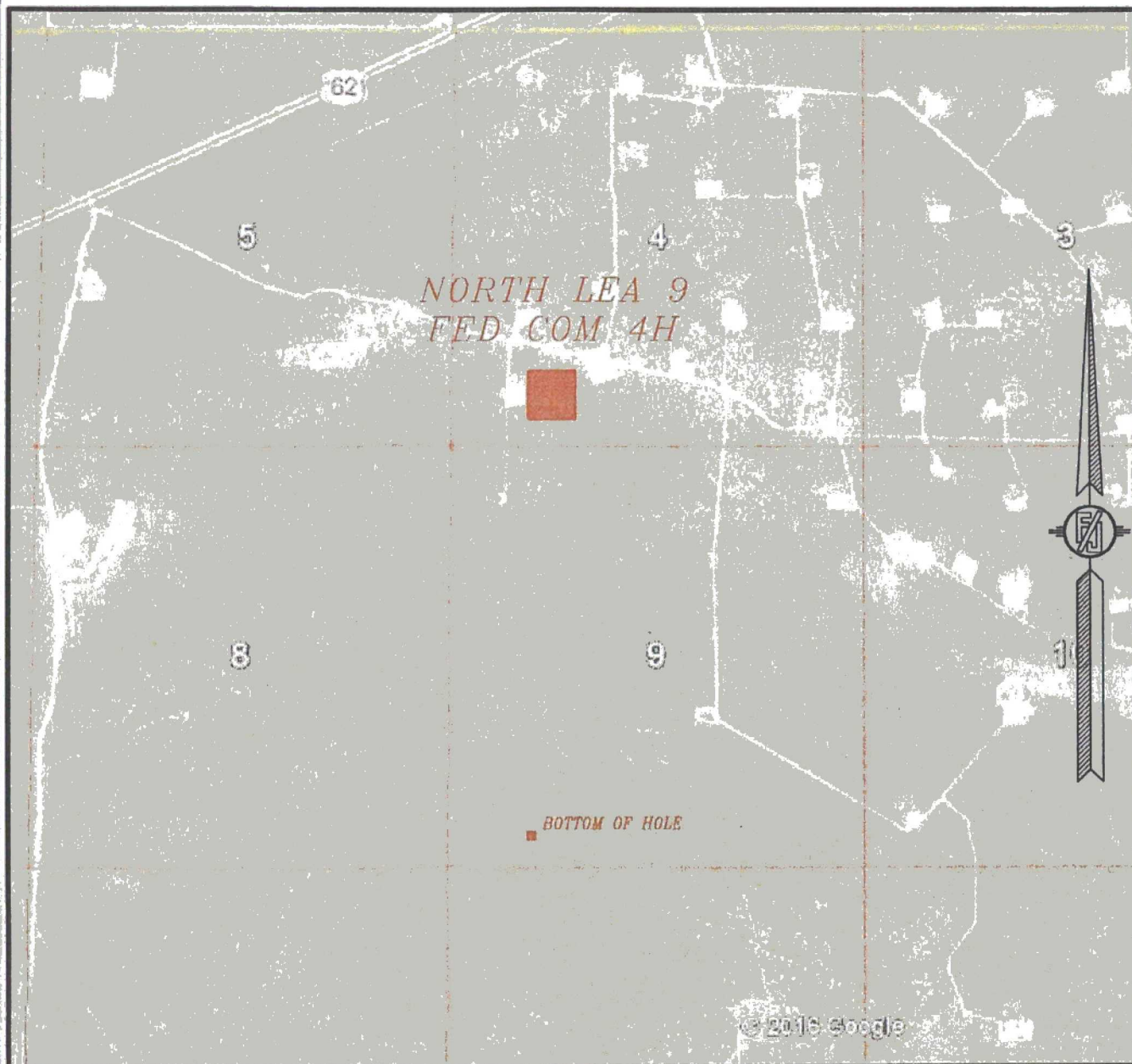
READ & STEVENS, INC.
NORTH LEA 9 FED COM 4H
LOCATED 660 FT. FROM THE SOUTH LINE
AND 1275 FT. FROM THE WEST LINE OF
SECTION 4, TOWNSHIP 20 SOUTH,
RANGE 34 EAST, N.M.P.M.
LEA COUNTY, STATE OF NEW MEXICO

JULY 19, 2016

SURVEY NO. 1910A

MADRON SURVEYING, INC. 301 SOUTH CANAL (575) 234-3341 CARLSBAD, NEW MEXICO

SECTION 4, TOWNSHIP 20 SOUTH, RANGE 34 EAST, N.M.P.M.
LEA COUNTY, STATE OF NEW MEXICO
AERIAL PHOTO



NOT TO SCALE
AERIAL PHOTO:
GOOGLE EARTH
FEBRUARY 2014

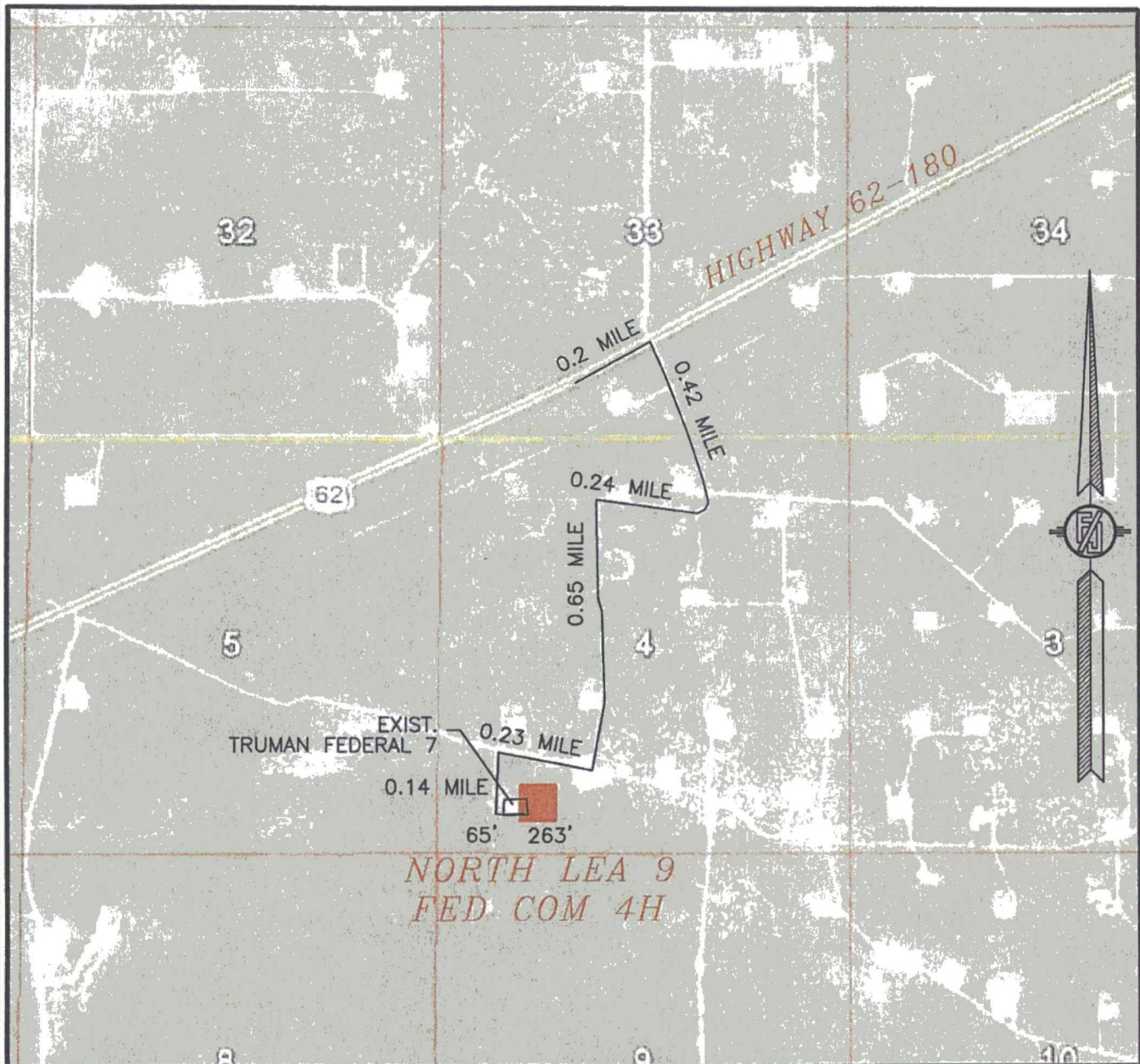
READ & STEVENS, INC.
NORTH LEA 9 FED COM 4H
LOCATED 660 FT. FROM THE SOUTH LINE
AND 1275 FT. FROM THE WEST LINE OF
SECTION 4, TOWNSHIP 20 SOUTH,
RANGE 34 EAST, N.M.P.M.
LEA COUNTY, STATE OF NEW MEXICO

JULY 19, 2016

SURVEY NO. 1910A

MADRON SURVEYING, INC. 301 SOUTH CANAL (575) 234-3341 CARLSBAD, NEW MEXICO

SECTION 4, TOWNSHIP 20 SOUTH, RANGE 34 EAST, N.M.P.M.
LEA COUNTY, STATE OF NEW MEXICO
ACCESS AERIAL ROUTE MAP



NOT TO SCALE
AERIAL PHOTO:
GOOGLE EARTH
FEBRUARY 2014

READ & STEVENS, INC.
NORTH LEA 9 FED COM 4H
LOCATED 660 FT. FROM THE SOUTH LINE
AND 1275 FT. FROM THE WEST LINE OF
SECTION 4, TOWNSHIP 20 SOUTH,
RANGE 34 EAST, N.M.P.M.
LEA COUNTY, STATE OF NEW MEXICO

JULY 19, 2016

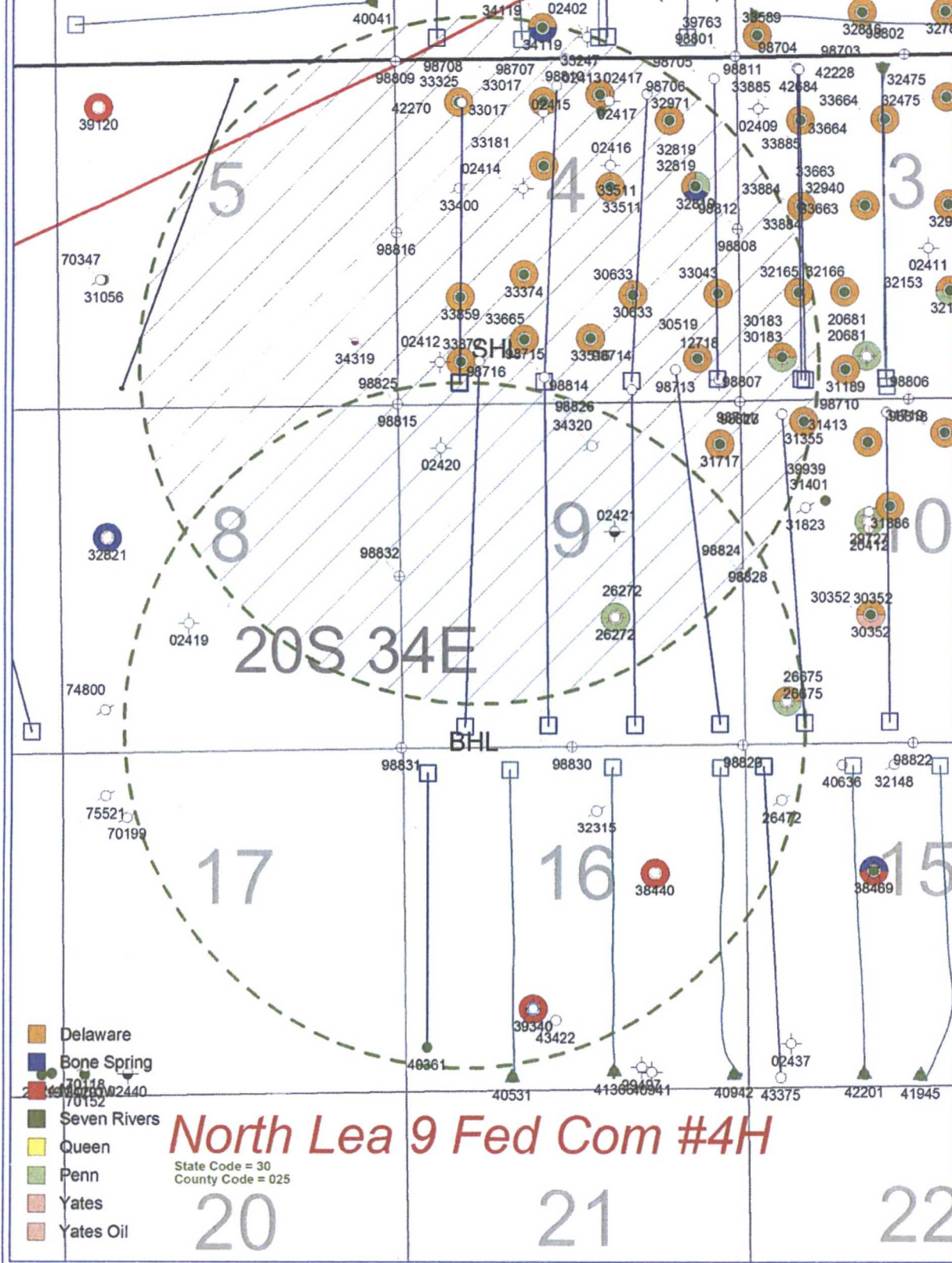
SURVEY NO. 1910A

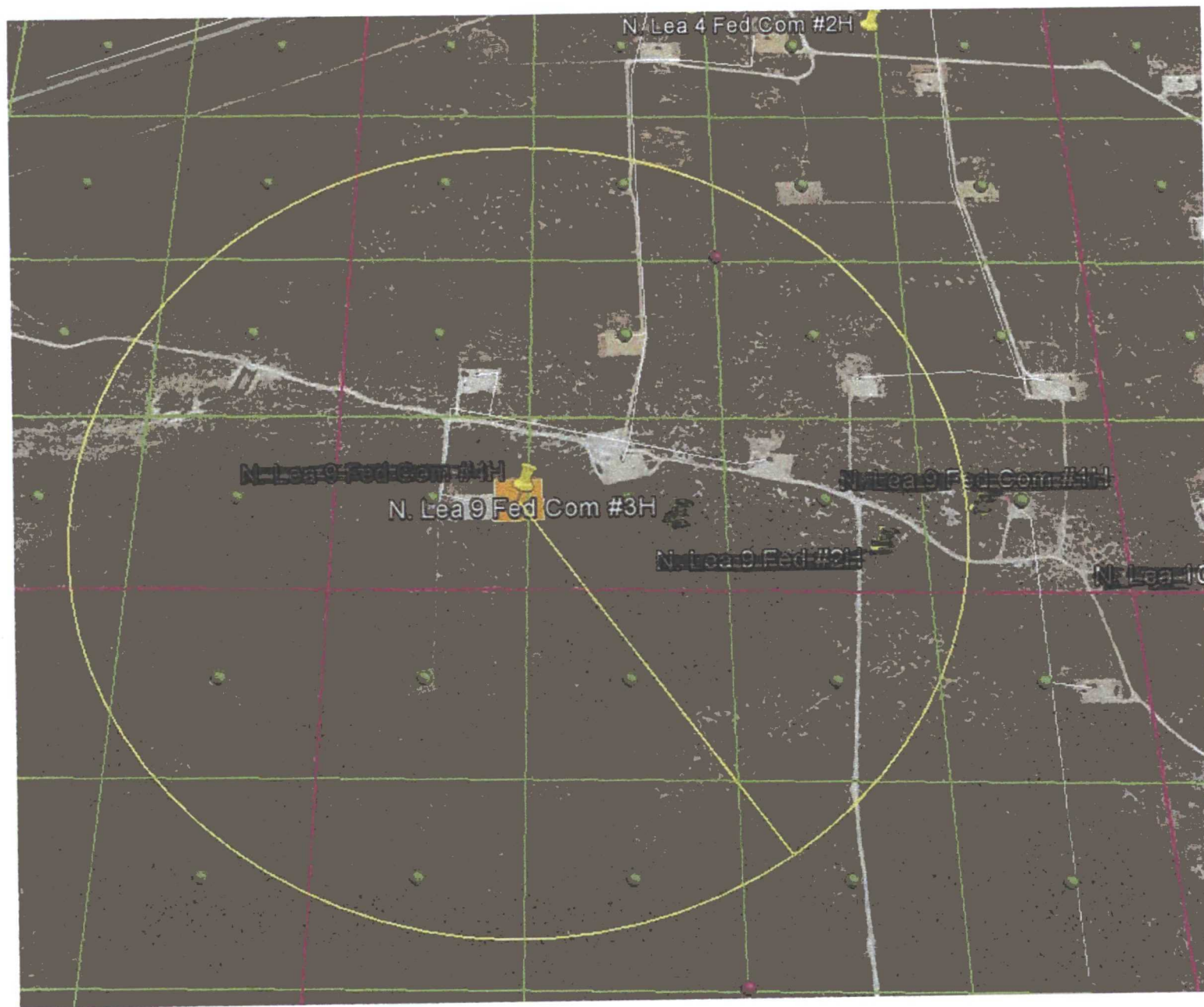
MADRON SURVEYING, INC. 301 SOUTH CANAL (575) 234-3341 CARLSBAD, NEW MEXICO

1-MILE RADIUS MAP

Green Circle with diagonal line = surface hole (SHL)

Green Circle with blue fill = bottom hole (BHL)

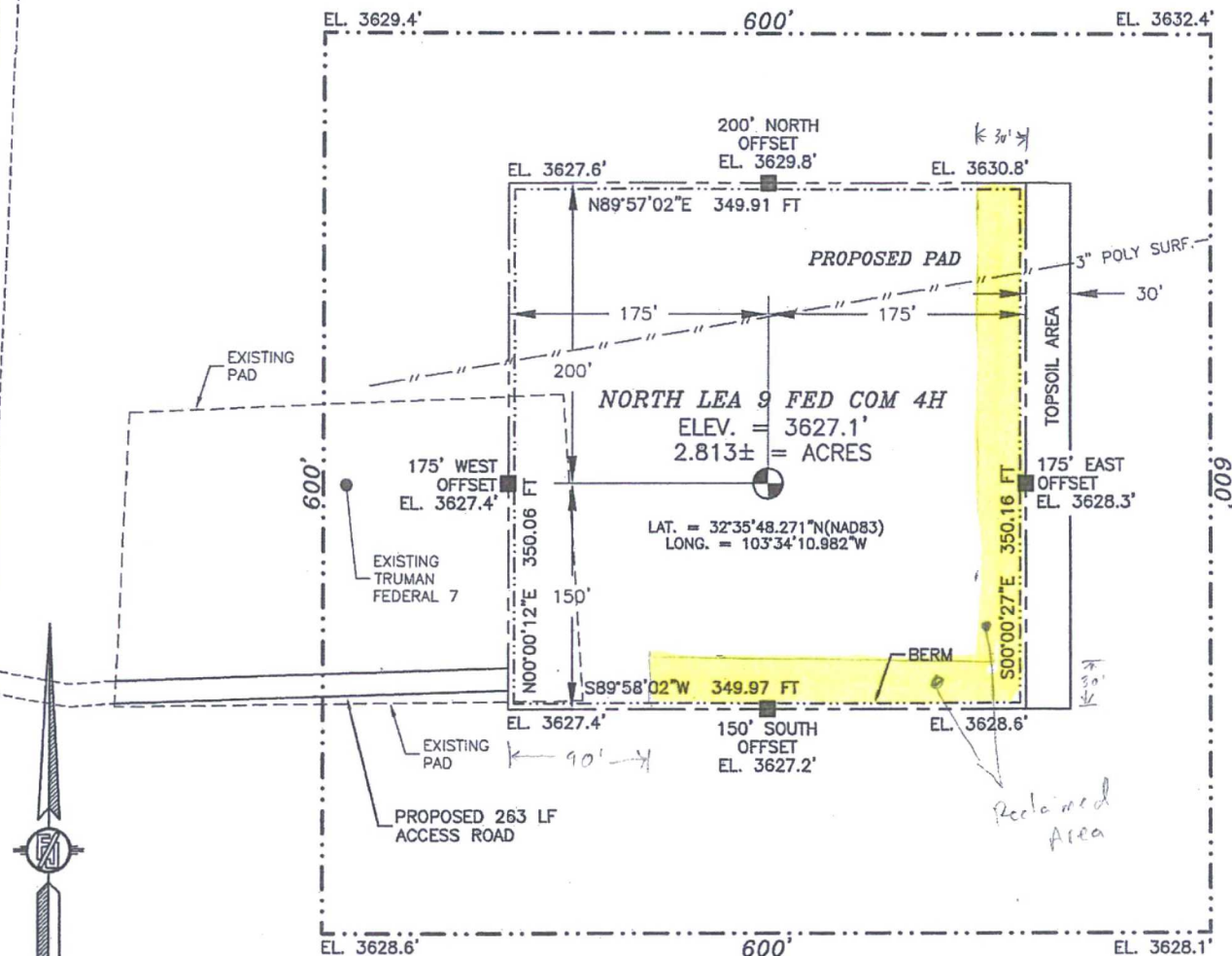




3000' ROE MAP

SECTION 4, TOWNSHIP 20 SOUTH, RANGE 34 EAST, N.M.P.M.
LEA COUNTY, STATE OF NEW MEXICO
SITE MAP

NOTE: LATITUDE AND LONGITUDE COORDINATES ARE SHOWN USING THE NORTH AMERICAN DATUM OF 1983 (NAD83). LISTED NEW MEXICO STATE PLANE EAST COORDINATES ARE GRID (NAD83). BASIS OF BEARING AND DISTANCES USED ARE NEW MEXICO STATE PLANE EAST COORDINATES MODIFIED TO THE SURFACE



012 60 120 240
SCALE 1" = 120'

DIRECTIONS TO LOCATION

FROM MILE MARKER #78 ON HWY 62-180 GOING EAST GO APPROX. 0.2 OF A MILE TO A LEASE ROAD ON RIGHT (SOUTH) TURN SOUTH GO APPROX. 0.42 OF A MILE ROAD TURNS RIGHT (WEST) TURN WEST GO APPROX. 0.24 OF A MILE ROAD TURNS LEFT (SOUTH) TURN SOUTH GO APPROX. 0.65 OF A MILE TO "I" INTERSECTION TURN RIGHT (WEST) GO WEST APPROX. 0.23 OF A MILE TO A LEASE ROAD ON LEFT (SOUTH) TURN SOUTH GO APPROX. 0.14 OF A MILE ROAD TURNS LEFT (EAST) TURN EAST GO 65' TO SOUTHWEST PAD CORNER OF EXISTING TRUMAN FEDERAL 7, THEN GO EAST 263' TO THE SOUTHWEST PAD CORNER FOR THIS LOCATION.

READ & STEVENS, INC.
NORTH LEA 9 FED COM 4H
LOCATED 660 FT. FROM THE SOUTH LINE
AND 1275 FT. FROM THE WEST LINE OF
SECTION 4, TOWNSHIP 20 SOUTH,
RANGE 34 EAST, N.M.P.M.
LEA COUNTY, STATE OF NEW MEXICO

JULY 19, 2016

SURVEY NO. 1910A

MADRON SURVEYING, INC. 301 SOUTH CANAL (575) 234-3341 CARLSBAD, NEW MEXICO

Handwritten signature and date:
27 October 2016