

District I
1625 N. French Dr., Hobbs, NM 88240
Phone: (575) 393-6161 Fax: (575) 393-0720
District II
811 S. First St., Artesia, NM 88210
Phone: (575) 748-1283 Fax: (575) 748-9720
District III
1000 Rio Brazos Road, Aztec, NM 87410
Phone: (505) 334-6178 Fax: (505) 334-6170
District IV
1220 S. St. Francis Dr., Santa Fe, NM 87505
Phone: (505) 476-3460 Fax: (505) 476-3462

State of New Mexico
Energy, Minerals & Natural Resources Department
OIL CONSERVATION DIVISION
1220 South St. Francis Dr.
Santa Fe, NM 87505

HOBBS OCD
MAR 08 2017
RECEIVED

Form C-102
Revised August 1, 2011
Submit one copy to appropriate
District Office

☐ AMENDED REPORT

WELL LOCATION AND ACREAGE DEDICATION PLAT

¹ API Number 30-025-43461	² Pool Code 49680	³ Pool Name PEARL;BONE SPRING
⁴ Property Code 317498	⁵ Property Name BLACK PEARL STATE 4	
⁷ OGRID No. 371127	⁸ Operator Name BLACK MOUNTAIN OPERATING, LLC	⁶ Well Number 1H
		⁹ Elevation 3686'

¹⁰ Surface Location

UL or lot no.	Section	Township	Range	Lot Idn	Feet from the	North/South line	Feet from the	East/West line	County
B	4	20 SOUTH	35 EAST, N.M.P.M.		211'	NORTH	2162'	EAST	LEA

¹¹ Bottom Hole Location If Different From Surface

UL or lot no.	Section	Township	Range	Lot Idn	Feet from the	North/South line	Feet from the	East/West line	County
O	4	20 SOUTH	35 EAST, N.M.P.M.		330'	SOUTH	2247'	EAST	LEA

¹² Dedicated Acres 160.00	¹³ Joint or Infill	¹⁴ Consolidation Code Other	¹⁵ Order No.
---	-------------------------------	---	-------------------------

No allowable will be assigned to this completion until all interests have been consolidated or a non-standard unit has been approved by the division.

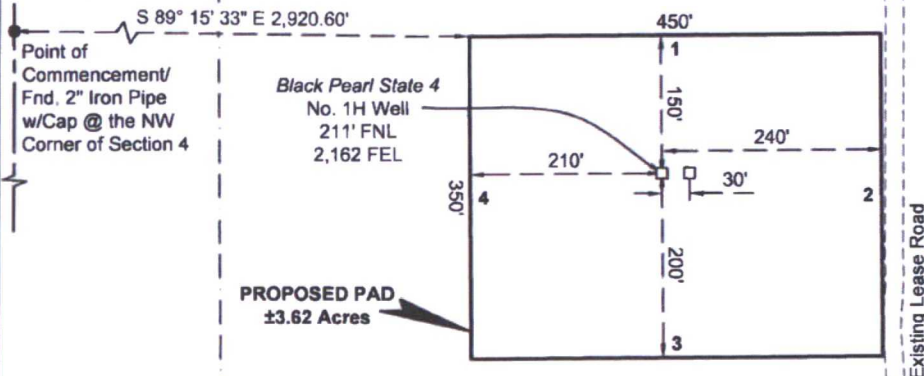
<p>BLACK PEARL STATE 4 1H WELL</p> <p>X= 768,852 NAD 27 Y= 586,334 LAT. 32.508903 LONG. 103.460251</p> <p>X= 810,033 NAD83 Y= 586,397 LAT. 32.509026 LONG. 103.460739</p> <p>ELEVATION +3686' NAVD 88</p>	<p>PROPOSED BOTTOM HOLE LOCATION</p> <p>X= 768,792 NAD 27 Y= 581,560 LAT. 32.595783 LONG. 103.460572</p> <p>X= 809,973 NAD83 Y= 581,623 LAT. 32.595906 LONG. 103.461060</p>	<p>17 OPERATOR CERTIFICATION</p> <p>I hereby certify that the information contained herein is true and complete to the best of my knowledge and belief, and that this organization either owns a working interest or unleased mineral interest in the land including the proposed bottom hole location or has a right to drill this well at this location pursuant to a contract with an owner of such a mineral or working interest, or to a voluntary pooling agreement or a compulsory pooling order heretofore entered by the division.</p> <p><i>Denise L. White</i> 03/03/2017 Signature Date</p> <p>Denise L. White Printed Name</p> <p>denise.white@blackmtn.com E-mail Address</p>	<p>18 SURVEYOR CERTIFICATION</p> <p>I hereby certify that the well location shown on this plat was plotted from field notes of actual surveys made by me or under my supervision, and that the same is true and correct to the best of my belief.</p> <p>2-14-2017 Date of Survey</p> <p><i>Robert L. Lastrapes</i> Signature and Seal of Professional Surveyor</p> <p>23006 Certificate Number</p>
--	--	--	--

LEGEND	
	Section Line
	Section Break
	Township/Range Line
	Existing Road
	Proposed Pad
	Fnd. Monument

Sec. 33

T19S-R35E

T20S-R35E



NW/NE

Sec. 4

State of New Mexico

FOR THE EXCLUSIVE USE OF
BLACK MOUNTAIN OPERATING, LLC
I, Robert L. Lastrapes, Professional
Surveyor, do hereby state this plat is true
and correct to the best of my knowledge.



BLACK PEARL STATE 4 NO. 1H WELL		NW PAD CORNER		NE PAD CORNER	
X=	768,852 NAD 27	X=	768,640 NAD 27	X=	769,090 NAD 27
Y=	586,334	Y=	586,483	Y=	586,486
LAT.	32.608903	ELEVATION +3688' NAVD 88		ELEVATION +3688' NAVD 88	
LONG.	103.460251	SW PAD CORNER		SE PAD CORNER	
X=	810,033 NAD83	X=	768,643 NAD 27	X=	769,093 NAD 27
Y=	586,397	Y=	586,133	Y=	586,136
LAT.	32.609026	ELEVATION +3692' NAVD 88		ELEVATION +3695' NAVD 88	
LONG.	103.460739				
ELEVATION +3686' NAVD 88					

Scale: 1" = 200'

200' 0 100' 200'

Page 1 of 2

SURFACE USE PLAT

BLACK MOUNTAIN OPERATING, LLC

PROPOSED PAD

BLACK PEARL STATE 4 NO. 1H WELL

SECTION 4, T20S-R35E

LEA COUNTY, NEW MEXICO



C. H. Fenstermaker & Associates, L.L.C.
135 Regency Sq. Lafayette, LA 70508
Ph. 337-237-2200 Fax. 337-232-3299
www.fenstermaker.com

DRAWN BY: BOR		REVISIONS	
PROJ. MGR.: VHV	No.	DATE:	REVISED BY:
DATE: 03/01/2017	No.	DATE:	REVISED BY:
FILENAME: T:\2017\2175366\DWG\Black Pearl State 4 No.1H_SUP.dwg			

NOTE:

Please be advised, that while reasonable efforts are made to locate and verify pipelines and anomalies using our standard pipeline locating equipment, it is impossible to be 100 % effective. As such, we advise using caution when performing work as there is a possibility that pipelines and other hazards, such as fiber optic cables, PVC pipelines, etc. may exist undetected on site.

NOTE:

Many states maintain information centers that establish links between those who dig (excavators) and those who own and operate underground facilities (operators). It is advisable and in most states, law, for the contractor to contact the center for assistance in locating and marking underground utilities. For guidance: New Mexico One Call - www.nmonecall.org

DISCLAIMER: At this time, C. H. Fenstermaker & Associates, L.L.C. has not performed nor was asked to perform any type of engineering, hydrological modeling, flood plain, or "No Rise" certification analyses, including but not limited to determining whether the project will impact flood hazards in connection with federal/FEMA, state, and/or local laws, ordinances and regulations. Accordingly, Fenstermaker makes no warranty or representation of any kind as to the foregoing issues, and persons or entities using this information shall do so at their own risk.

PROPOSED PAD		
COURSE	BEARING	DISTANCE
1	N 89° 32' 43" E	450.00'
2	S 00° 27' 17" E	350.00'
3	S 89° 32' 43" W	450.00'
4	N 00° 27' 17" W	350.00'

FOR THE EXCLUSIVE USE OF
BLACK MOUNTAIN OPERATING, LLC
I, Robert L. Lastrapes, Professional
Surveyor, do hereby state this plat is true
and correct to the best of my knowledge.



SURFACE USE PLAT

BLACK MOUNTAIN OPERATING, LLC

PROPOSED PAD
BLACK PEARL STATE 4 NO. 1H WELL
SECTION 4, T20S-R35E
LEA COUNTY, NEW MEXICO



C. H. Fenstermaker & Associates, L.L.C.
135 Regency Sq. Lafayette, LA 70508
Ph. 337-237-2200 Fax 337-232-3299
www.fenstermaker.com

DRAWN BY: BOR

REVISIONS

PROJ. MGR.: VHV

No.

DATE:

REVISED BY:

DATE: 03/01/2017

No.

DATE:

REVISED BY:

FILENAME: T:\2017\2175366\DWG\Black Pearl State 4 No.1H_SUP.dwg