

District I  
1625 N. French Dr., Hobbs, NM 88240  
Phone: (575) 393-6161 Fax: (575) 393-0720  
District II  
811 S. First St., Artesia, NM 88210  
Phone: (575) 748-1283 Fax: (575) 748-9720  
District III  
1000 Rio Brazos Road, Aztec, NM 87410  
Phone: (505) 334-6178 Fax: (505) 334-6170  
District IV  
1220 S. St. Francis Dr., Santa Fe, NM 87505  
Phone: (505) 476-3460 Fax: (505) 476-3462

State of New Mexico  
Energy, Minerals & Natural Resources Department  
OIL CONSERVATION DIVISION  
1220 South St. Francis Dr.  
Santa Fe, NM 87505

Form C-102  
Revised August 1, 2011  
Submit one copy to appropriate  
District Office

☐ AMENDED REPORT

WELL LOCATION AND ACREAGE DEDICATION PLAT

<sup>1</sup> API Number 30-025-43662	<sup>2</sup> Pool Code 49680	<sup>3</sup> Pool Name PEARL;BONE SPRING
<sup>4</sup> Property Code 49680	<sup>5</sup> Property Name BLACK PEARL STATE 4	<sup>6</sup> Well Number 2H
<sup>7</sup> OGRID No. 371127	<sup>8</sup> Operator Name BLACK MOUNTAIN OPERATING, LLC	<sup>9</sup> Elevation 3686'

<sup>10</sup> Surface Location

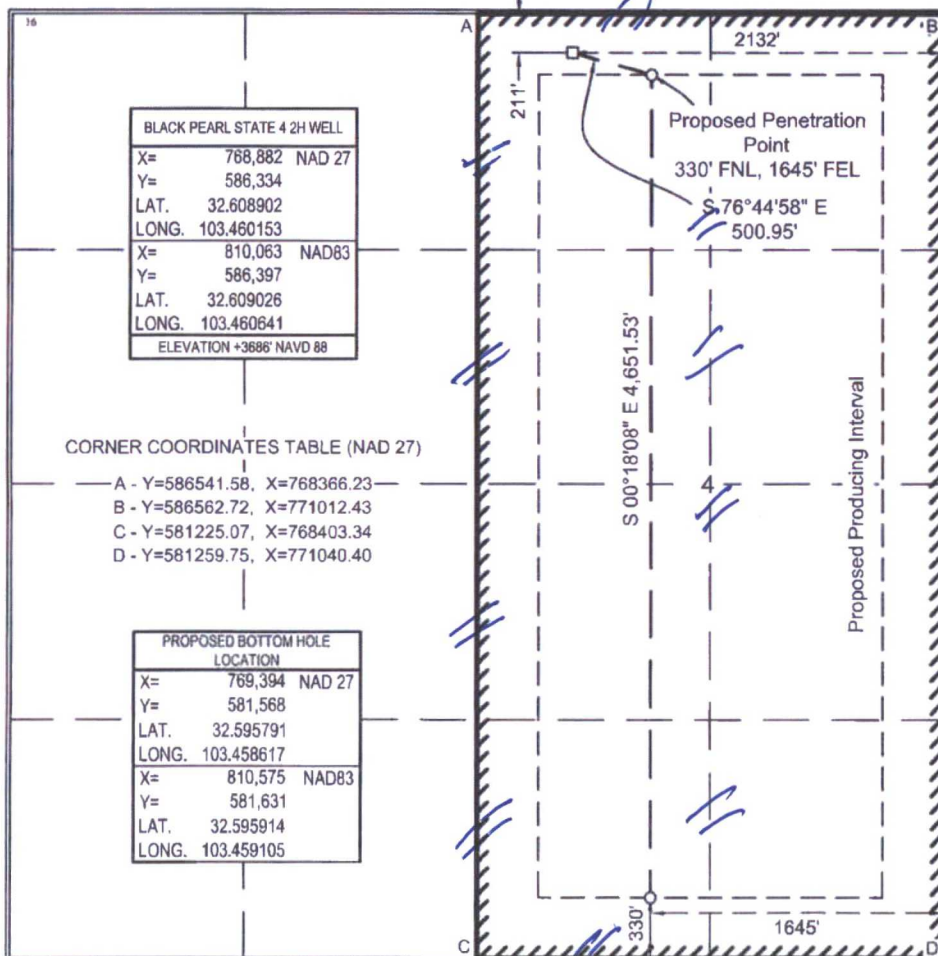
UL or lot no.	Section	Township	Range	Lot Idn	Feet from the	North/South line	Feet from the	East/West line	County
B	4	20 SOUTH	35 EAST, N.M.P.M.		211'	NORTH	2132'	EAST	LEA

<sup>11</sup> Bottom Hole Location If Different From Surface

UL or lot no.	Section	Township	Range	Lot Idn	Feet from the	North/South line	Feet from the	East/West line	County
O	4	20 SOUTH	35 EAST, N.M.P.M.		330'	SOUTH	1645'	EAST	LEA

<sup>12</sup> Dedicated Acres 160.00	<sup>13</sup> Joint or Infill	<sup>14</sup> Consolidation Code Other	<sup>15</sup> Order No.
---	-------------------------------	---	-------------------------

No allowable will be assigned to this completion until all interests have been consolidated or a non-standard unit has been approved by the division.



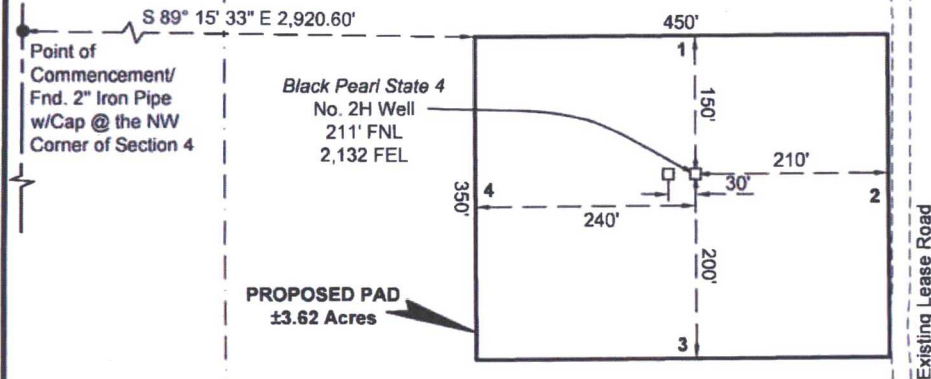
<b><sup>17</sup> OPERATOR CERTIFICATION</b>	
I hereby certify that the information contained herein is true and complete to the best of my knowledge and belief, and that this organization either owns a working interest or an undivided mineral interest in the land including the proposed bottom hole location or has a right to drill this well at this location pursuant to a contract with an owner of such a mineral or working interest, or to a voluntary pooling agreement or a compulsory pooling order heretofore entered by the division.	
Signature <i>Denise L. White</i>	Date 03/03/2017
Printed Name Denise L. White	
E-mail Address denise.white@blackmtn.com	
<b><sup>18</sup> SURVEYOR CERTIFICATION</b>	
I hereby certify that the well location shown on this plat was plotted from field notes of actual surveys made by me or under my supervision, and that the same is true and correct to the best of my belief.	
Date of Survey 2-14-2017	Signature and Seal of Professional Surveyor <i>Robert L. Lastrapes</i>
Certificate Number 23006	

LEGEND	
	Section Line
	Section Break
	Township/Range Line
	Existing Road
	Proposed Pad
	Fnd. Monument

Sec. 33

T19S-R35E

T20S-R35E



NW/NE  
Sec. 4  
State of New Mexico

FOR THE EXCLUSIVE USE OF  
BLACK MOUNTAIN OPERATING, LLC  
I, Robert L. Lastrapes, Professional  
Surveyor, do hereby state this plat is true  
and correct to the best of my knowledge.



BLACK PEARL STATE 4 NO. 2H WELL						
X=	768,882	NAD 27	NW PAD CORNER		NE PAD CORNER	
Y=	586,334		X=	768,640 NAD 27	X=	769,090 NAD 27
LAT.	32.608902		Y=	586,483	Y=	586,486
LONG.	103.460153		ELEVATION +3683' NAVD 88		ELEVATION +3688' NAVD 88	
X=	810,063	NAD83	SW PAD CORNER		SE PAD CORNER	
Y=	586,397		X=	768,643 NAD 27	X=	769,093 NAD 27
LAT.	32.609026		Y=	586,133	Y=	586,136
LONG.	103.460641		ELEVATION +3692' NAVD 88		ELEVATION +3695' NAVD 88	
ELEVATION +3686' NAVD 88						



## BLACK MOUNTAIN OPERATING, LLC

PROPOSED PAD  
BLACK PEARL STATE 4 NO. 2H WELL  
SECTION 4, T20S-R35E  
LEA COUNTY, NEW MEXICO



C. H. Fenstermaker & Associates, L.L.C.  
135 Regency Sq. Lafayette, LA 70508  
Ph. 337-237-2200 Fax. 337-232-3299  
www.fenstermaker.com

DRAWN BY: BOR		REVISIONS	
PROJ. MGR.: VHV	No.	DATE:	REVISED BY:
DATE: 03/01/2017	No.	DATE:	REVISED BY:
FILENAME: T:\2017\2175368\DWG\Black Pearl State 4 No.2H_SUP.dwg			



**NOTE:**

Please be advised, that while reasonable efforts are made to locate and verify pipelines and anomalies using our standard pipeline locating equipment, it is impossible to be 100 % effective. As such, we advise using caution when performing work as there is a possibility that pipelines and other hazards, such as fiber optic cables, PVC pipelines, etc. may exist undetected on site.

**NOTE:**

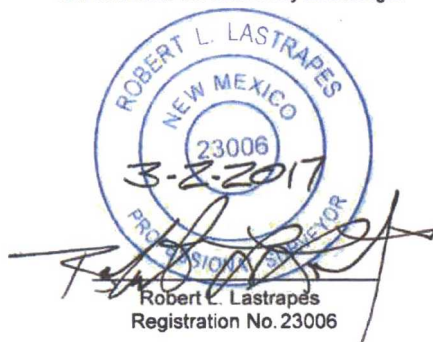
Many states maintain information centers that establish links between those who dig (excavators) and those who own and operate underground facilities (operators). It is advisable and in most states, law, for the contractor to contact the center for assistance in locating and marking underground utilities.

For guidance: New Mexico One Call - [www.nmonecall.org](http://www.nmonecall.org)

**DISCLAIMER:** At this time, C. H. Fenstermaker & Associates, L.L.C. has not performed nor was asked to perform any type of engineering, hydrological modeling, flood plain, or "No Rise" certification analyses, including but not limited to determining whether the project will impact flood hazards in connection with federal/FEMA, state, and/or local laws, ordinances and regulations. Accordingly, Fenstermaker makes no warranty or representation of any kind as to the foregoing issues, and persons or entities using this information shall do so at their own risk.

PROPOSED PAD		
COURSE	BEARING	DISTANCE
1	N 89° 32' 43" E	450.00'
2	S 00° 27' 17" E	350.00'
3	S 89° 32' 43" W	450.00'
4	N 00° 27' 17" W	350.00'

FOR THE EXCLUSIVE USE OF  
BLACK MOUNTAIN OPERATING, LLC  
I, Robert L. Lastrapes, Professional  
Surveyor, do hereby state this plat is true  
and correct to the best of my knowledge.



**SURFACE USE PLAT**

**BLACK MOUNTAIN OPERATING, LLC**

PROPOSED PAD  
BLACK PEARL STATE 4 NO. 2H WELL  
SECTION 4, T20S-R35E  
LEA COUNTY, NEW MEXICO



C. H. Fenstermaker & Associates, L.L.C.  
135 Regency Sq. Lafayette, LA 70508  
Ph. 337-237-2200 Fax. 337-232-3299  
[www.fenstermaker.com](http://www.fenstermaker.com)

DRAWN BY: BOR		REVISIONS	
PROJ. MGR.: VHV	No.	DATE:	REVISED BY:
DATE: 03/01/2017	No.	DATE:	REVISED BY:
FILENAME: T:\2017\2175368\DWG\Black Pearl State 4 No 2H_SUP.dwg			