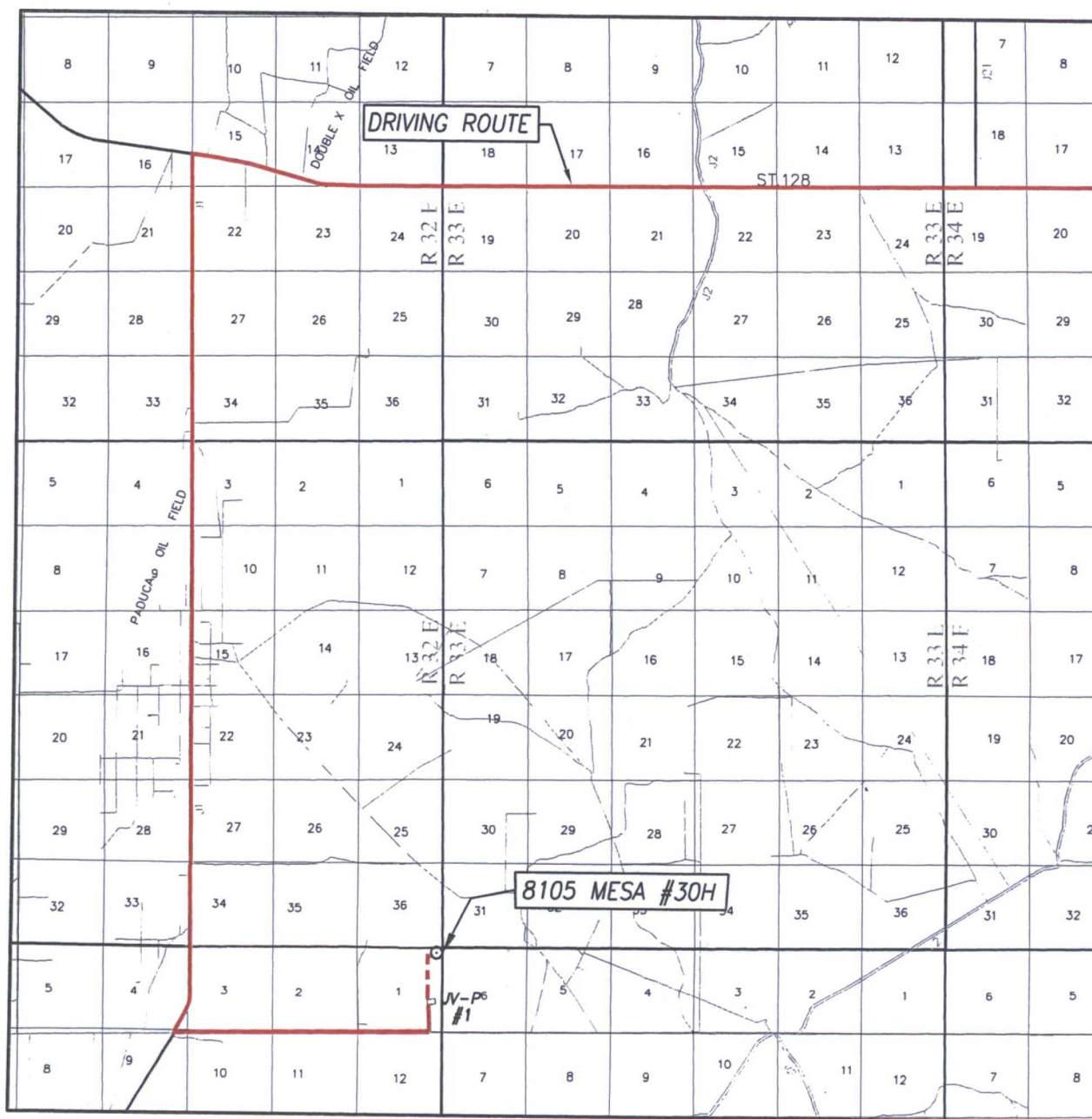



VICINITY MAP



SCALE: 1" = 2 MILES
DRIVING ROUTE: SEE LOCATION VERIFICATION MAP

SEC. 1 TWP. 26-S RGE. 32-E
SURVEY N.M.P.M.
COUNTY LEA STATE NEW MEXICO
DESCRIPTION 330' FNL & 380' FEL
ELEVATION 3367'
OPERATOR BTA OIL PRODUCERS, LLC
LEASE 8105 MESA

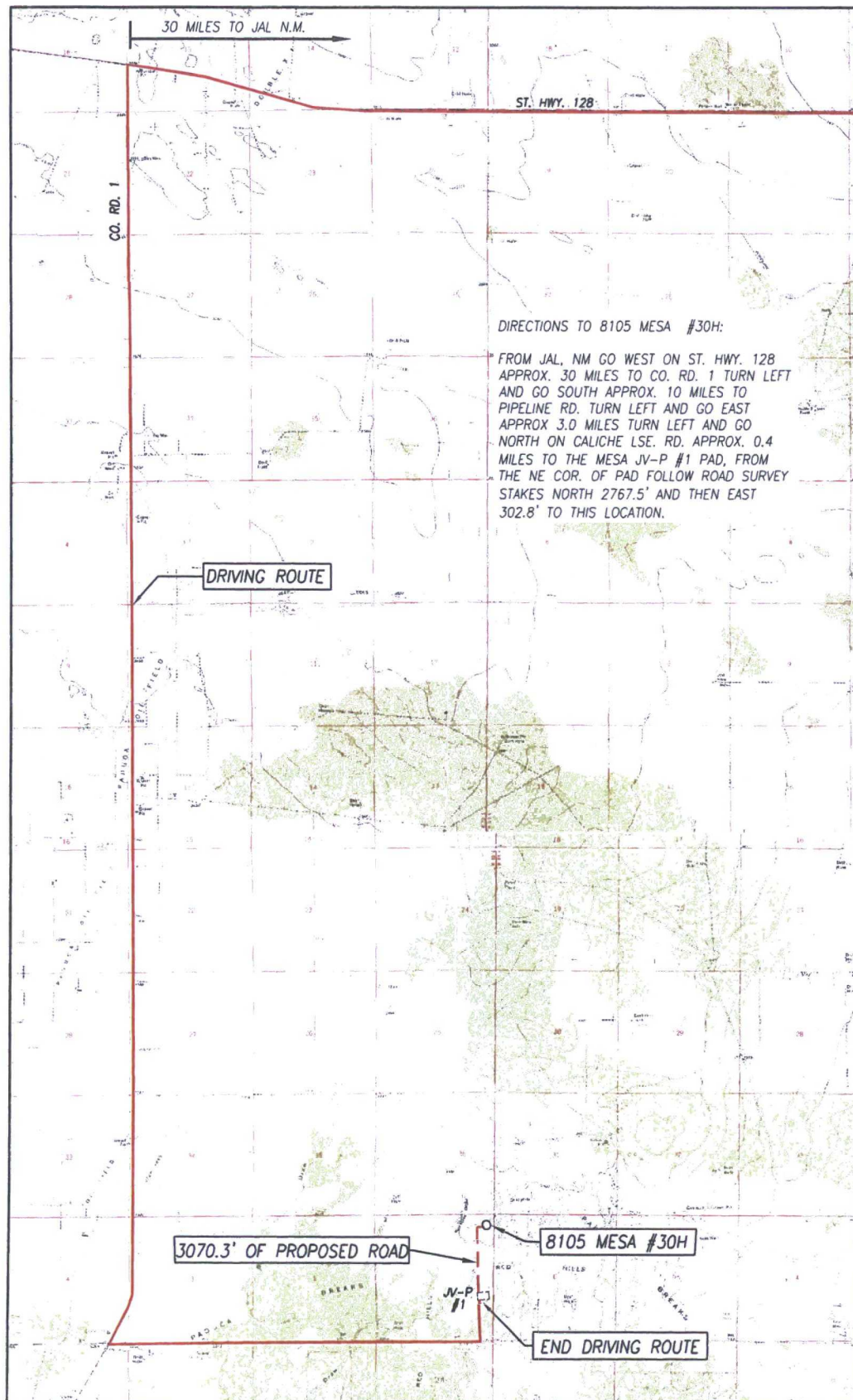


PROVIDING SURVEYING SERVICES
SINCE 1946

JOHN WEST SURVEYING COMPANY


412 N. DAL PASO HOBBS, N.M. 88240
(575) 393-3117 www.jwsc.biz
TBPLS# 10021000

LOCATION VERIFICATION MAP

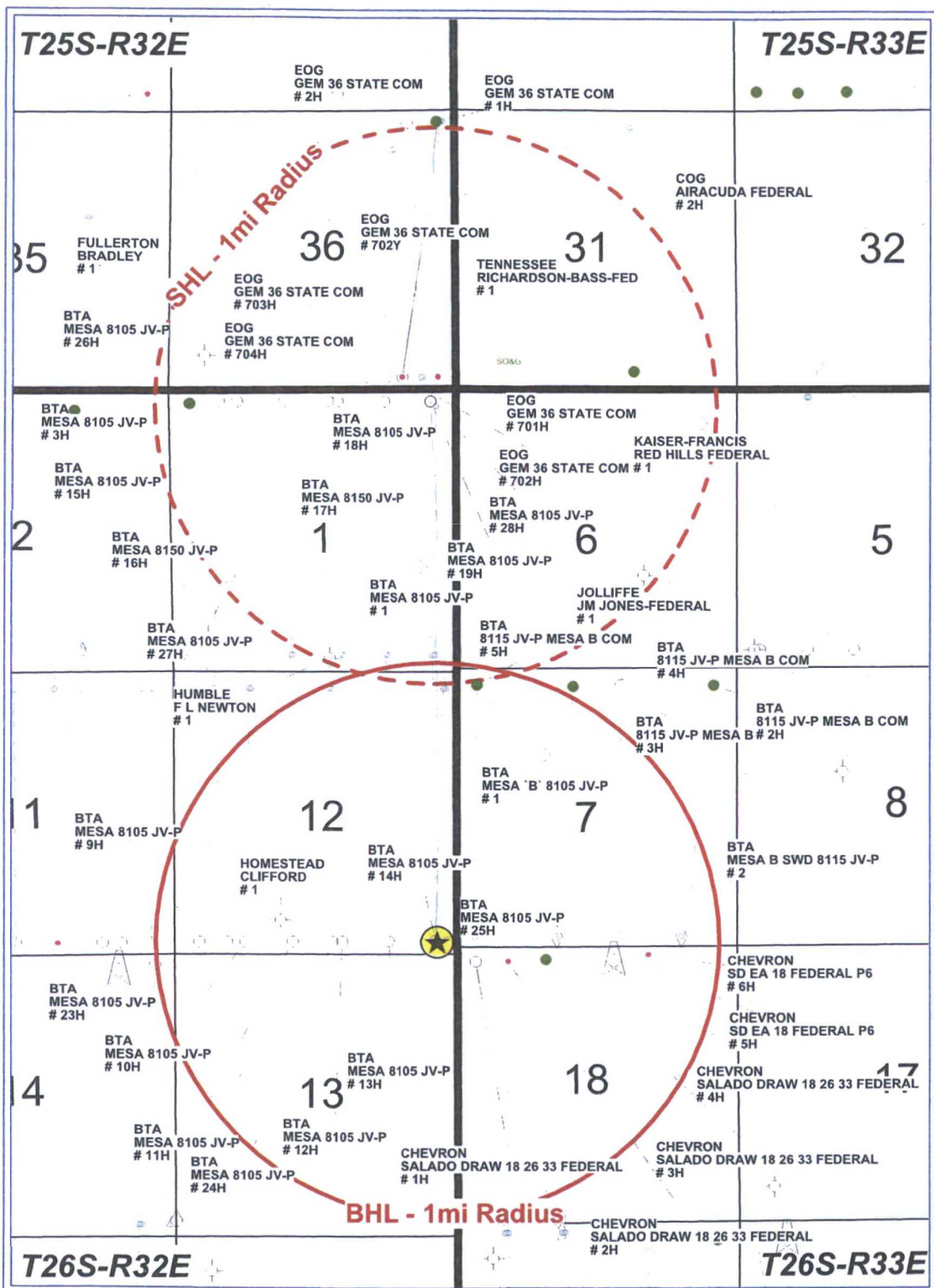


SEC. 1 TWP. 26-S RGE. 32-E
 COUNTY LEA STATE NEW MEXICO
 DESCRIPTION 330' FNL & 380' FEL
 ELEVATION 3367'
 OPERATOR BTA OIL PRODUCERS, LLC
 LEASE 8105 MESA
 U.S.G.S. TOPOGRAPHIC MAP
 PADUCA BREAKS EAST, N.M. SURVEY N.M.P.M.

SCALE: 1" = 5280' CONTOUR INTERVAL: PADUCA BREAKS SW, N.M. - 10'
 BELL, N.M. - 10' PADUCA BREAKS EAST, N.M. - 10'



PROVIDING SURVEYING SERVICES
 SINCE 1946
JOHN WEST SURVEYING COMPANY
 412 N. DAL PASO HOBBS, N.M. 88240
 (575) 393-3117 www.jwsc.biz
 TBPLS# 10021000



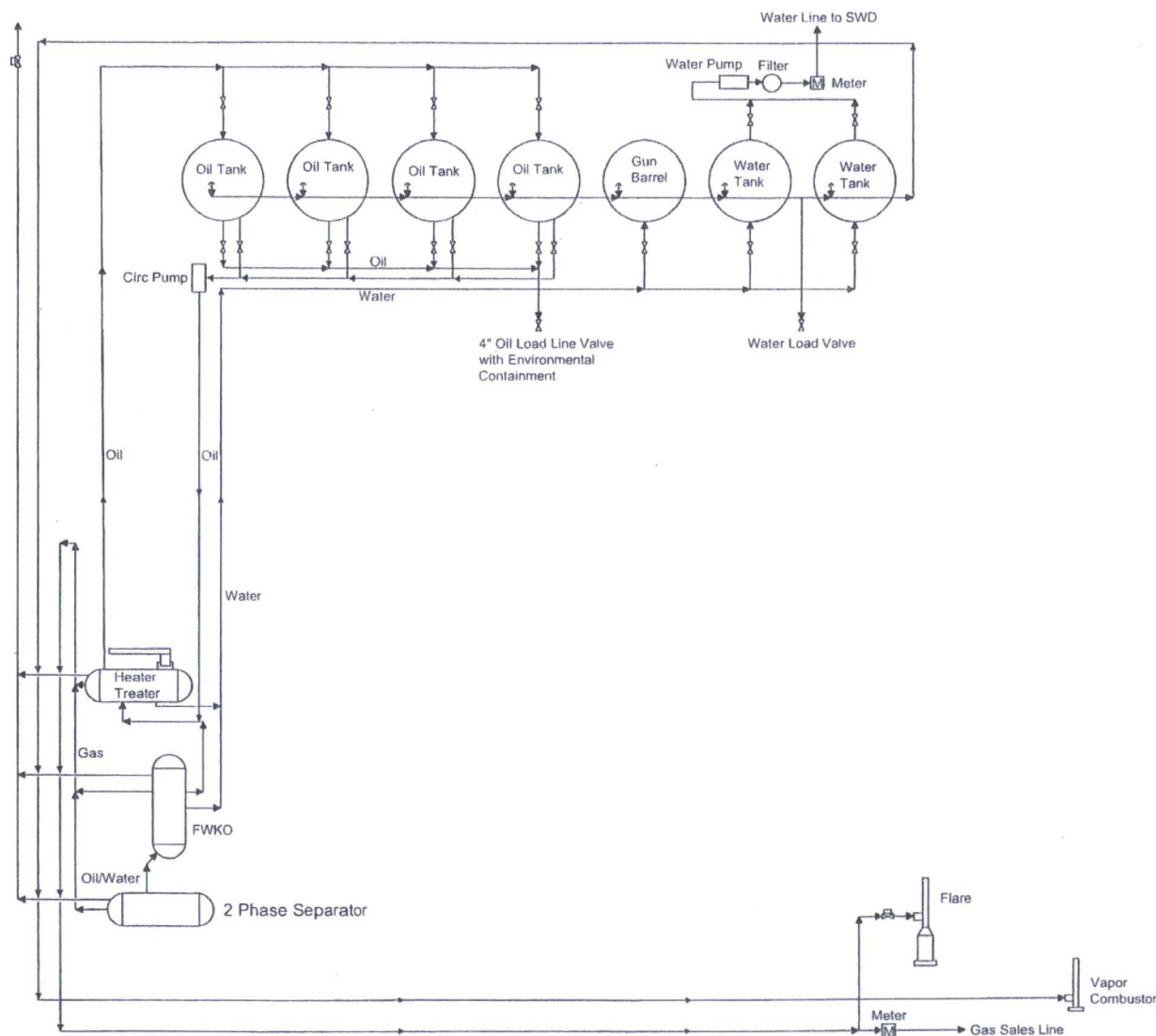
BTA Oil Producers, LLC

8105 JV-P Mesa 30H - 1 Mile Radius Map

SHL: 330FNL&380FEL, Sec. 1, T26S-R32E

BHL: 230FSL&380FEL, Sec. 12, T26S-R32E

Lea, County, New Mexico



NOT TO SCALE

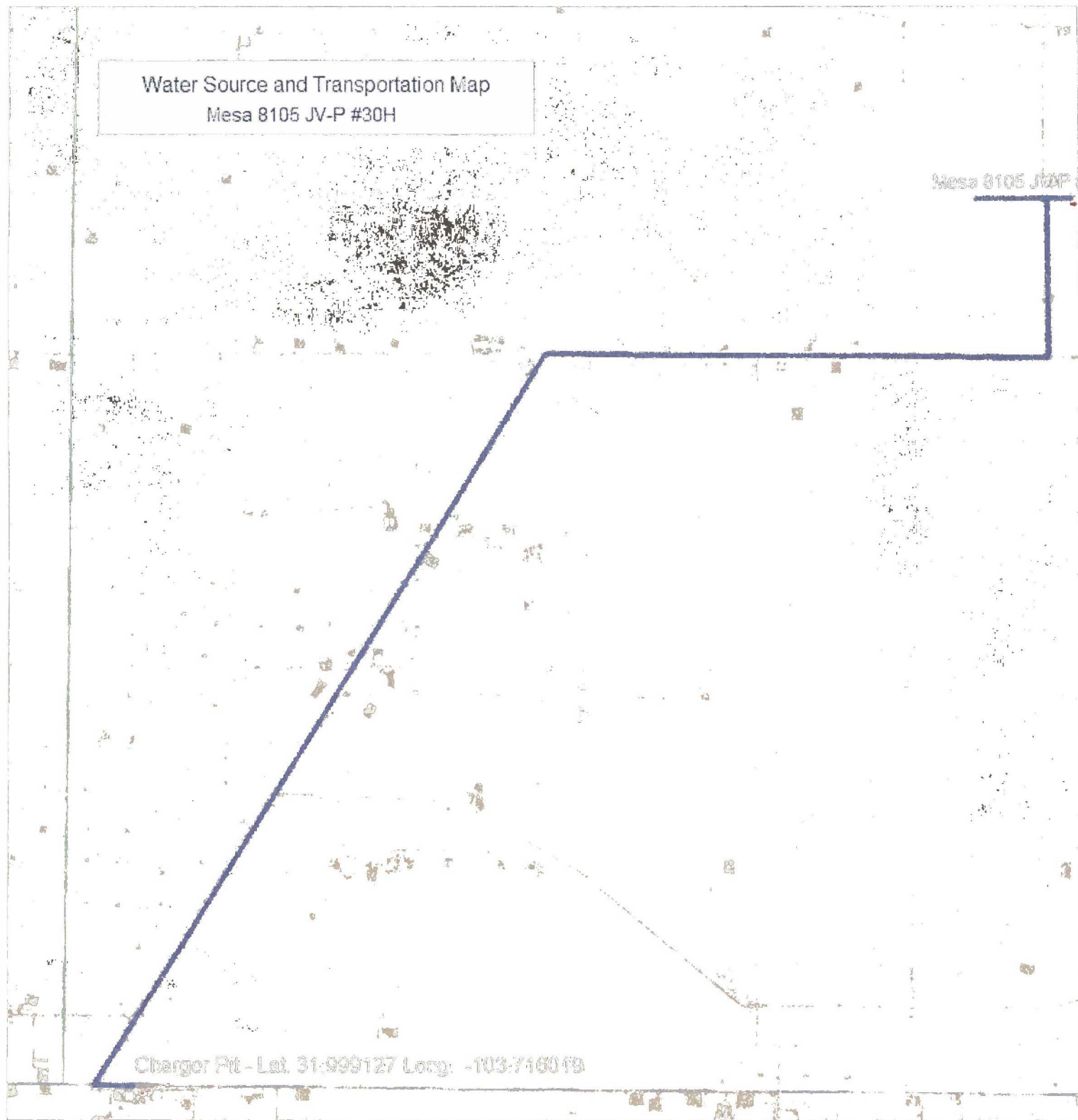
BTA Oil Producers, LLC

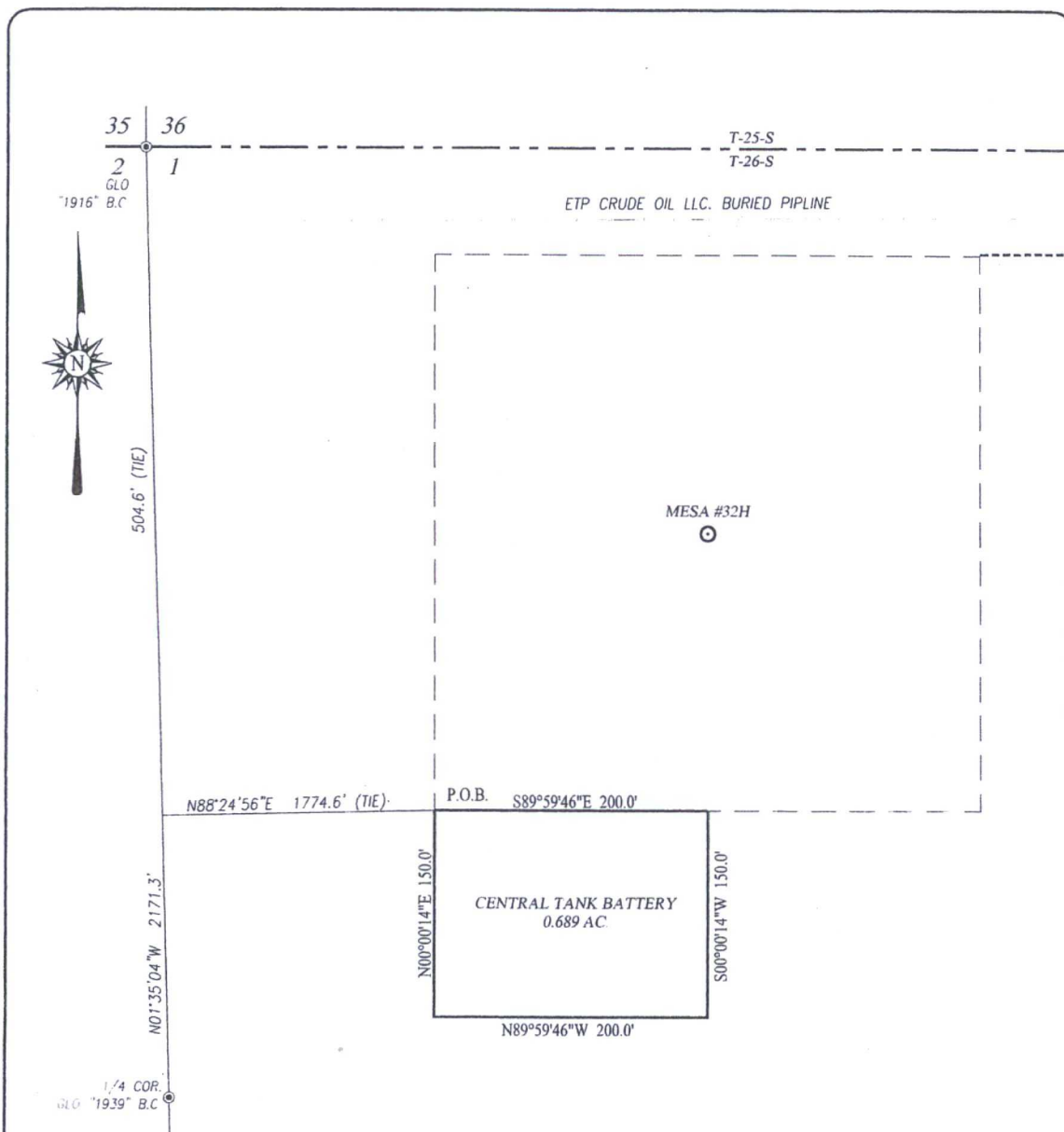
Mesa 8105 JV-P
-Proposed-
Central Tank Battery
 Section 1, T26S-R32E
 Lea County, NM

Water Source and Transportation Map
Mesa 8105 JV-P #30H

Mesa 8105 JV-P

Charger Pit - Lat. 31.999127 Long. -103.716019





DESCRIPTION:

A TRACT SITUATED IN THE NORTHEAST QUARTER OF SECTION 1, TOWNSHIP 26 SOUTH, RANGE 32 EAST, N.M.P.M., LEA COUNTY, NEW MEXICO AND BEING MORE PARTICULARLY DESCRIBED AS FOLLOWS:

BEGINNING AT THE NORTHEAST CORNER WHICH LIES S01°35'04"E 504.6 FEET AND N88°24'56"E 1774.6 FEET FROM THE NORTHWEST CORNER; THEN S89°59'46"E 200.0 FEET; THEN S00°00'14"W 150.0 FEET; THEN N89°59'46"W 200.0 FEET; THEN N00°00'14"E 150.0 FEET TO THE POINT OF BEGINNING AND CONTAINING 0.689 ACRES MORE OR LESS.

NOTE

BEARINGS SHOWN HEREON ARE MERCATOR GRID AND CONFORM TO THE NEW MEXICO COORDINATE SYSTEM "NEW MEXICO EAST ZONE" NORTH AMERICAN DATUM 1983. DISTANCES ARE SURFACE VALUES.

I, RONALD J. EIDSON, NEW MEXICO PROFESSIONAL SURVEYOR No. 3239, DO HEREBY CERTIFY THAT THIS SURVEY PLAT AND THE ACTUAL SURVEY ON THE GROUND UPON WHICH IT IS BASED WERE PERFORMED BY ME OR UNDER MY DIRECT SUPERVISION; THAT I AM RESPONSIBLE FOR THIS SURVEY; THAT THIS SURVEY MEETS THE MINIMUM STANDARDS FOR SURVEYING IN NEW MEXICO; AND THAT IT IS TRUE AND CORRECT TO THE BEST OF MY KNOWLEDGE AND BELIEF.

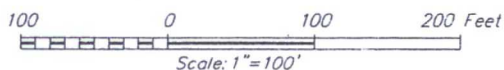
RONALD J. EIDSON

DATE:

6/15/2016

LEGEND

⊙ DENOTES FOUND CORNER AS NOTED



BTA OIL PRODUCERS, LLC

SURVEY FOR A TANK BATTERY FOR THE
8105 MESA #32H SITUATED IN THE NE/4 OF SECTION 1,
TOWNSHIP 26 SOUTH, RANGE 32 EAST, N.M.P.M.
LEA COUNTY, NEW MEXICO

Survey Date: 6/01/16

CAD Date: 6/14/16

Drawn By: ACK

W.O. No.: 16110430

Rev:

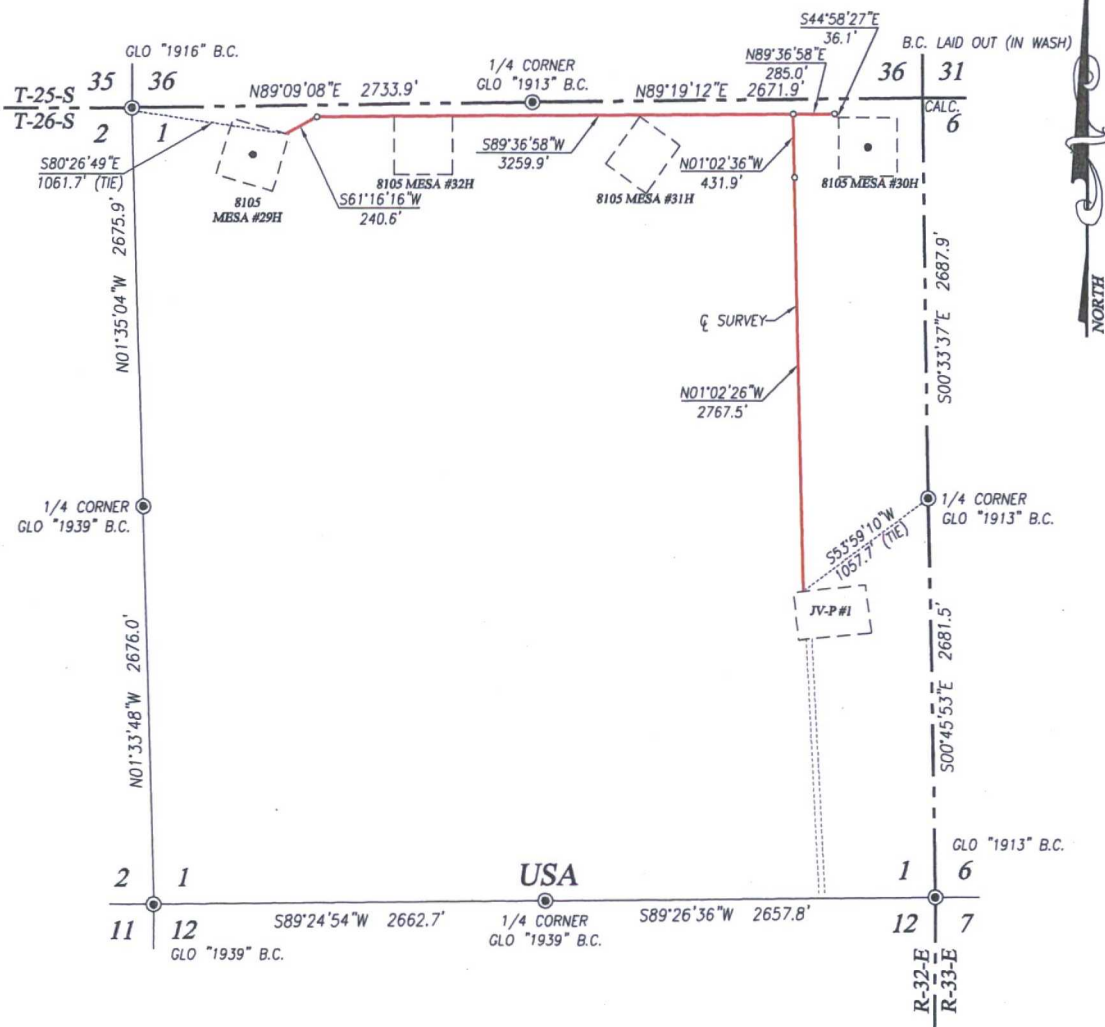
Rel. W.O.:

Sheet 1 of 1



PROVIDING SURVEYING SERVICES
SINCE 1946
JOHN WEST SURVEYING COMPANY

412 N. DAL PASO HOBBS, N.M. 88240
(575) 393-3117 www.jwsc.biz
TBPLS# 10021000



DESCRIPTION

SURVEY OF A STRIP OF LAND 30.0 FEET WIDE AND 7019.0 FEET OR 1.329 MILES IN LENGTH CROSSING USA LAND IN SECTION 1, TOWNSHIP 26 SOUTH, RANGE 32 EAST, N.M.P.M., LEA COUNTY, NEW MEXICO, AND BEING 15.0 FEET LEFT AND 15.0 FEET RIGHT OF THE ABOVE PLATTED CENTERLINE SURVEY.

NOTE

BEARINGS SHOWN HEREON ARE MERCATOR GRID AND CONFORM TO THE NEW MEXICO COORDINATE SYSTEM, NEW MEXICO EAST ZONE, NORTH AMERICAN DATUM 1983. DISTANCES ARE SURFACE VALUES.

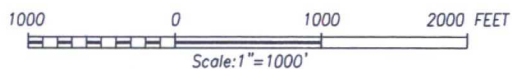
I, RONALD J. EIDSON, NEW MEXICO PROFESSIONAL SURVEYOR No. 3239, DO HEREBY CERTIFY THAT THE SURVEY PLAT AND THE ACTUAL SURVEY ON THE GROUND UPON WHICH IT IS BASED WERE PERFORMED BY ME OR UNDER MY DIRECT SUPERVISION; THAT I AM RESPONSIBLE FOR THIS SURVEY; THAT THIS SURVEY MEETS THE MINIMUM STANDARDS FOR SURVEYING IN NEW MEXICO; AND THAT IT IS TRUE AND CORRECT TO THE BEST OF MY KNOWLEDGE AND BELIEF.

RONALD J. EIDSON *Ronald J. Eidson*

DATE: 6/15/2016

LEGEND

● DENOTES FOUND CORNER AS NOTED



BTA OIL PRODUCERS, LLC

SURVEY FOR AN ACCESS ROAD
CROSSING SECTION 1,
TOWNSHIP 26 SOUTH, RANGE 32 EAST, N.M.P.M.
LEA COUNTY, NEW MEXICO



PROVIDING SURVEYING SERVICES
SINCE 1946
JOHN WEST SURVEYING COMPANY
412 N. DAL PASO HOBBS, N.M. 88240
(575) 393-3117 www.jwsc.biz
TBPLS# 10021000

Survey Date: 6/01/16	CAD Date: 6/14/15	Drawn By: ACK
W.O. No.: 16110430	Rev: .	Rel. W.O.: 14111286