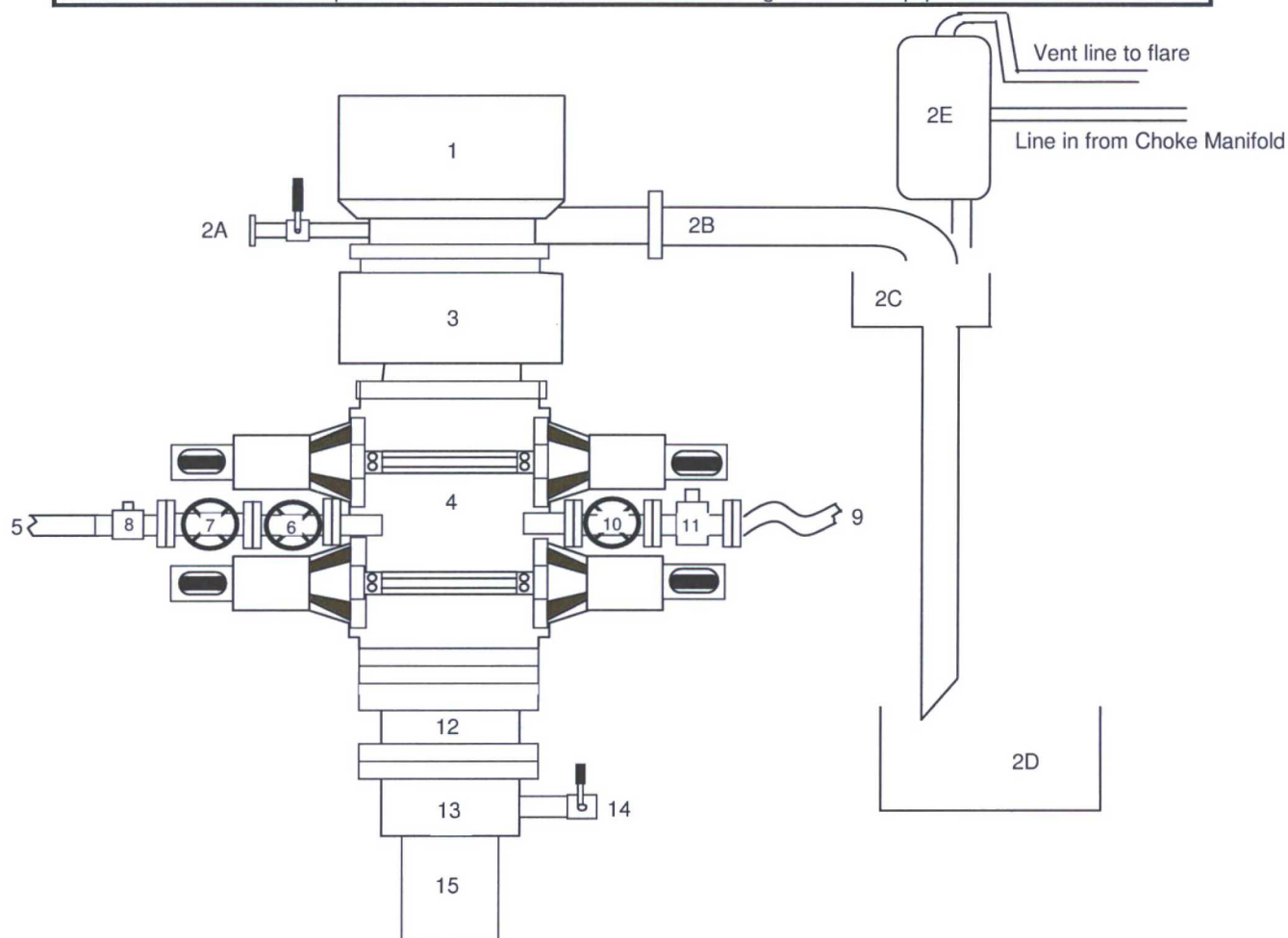


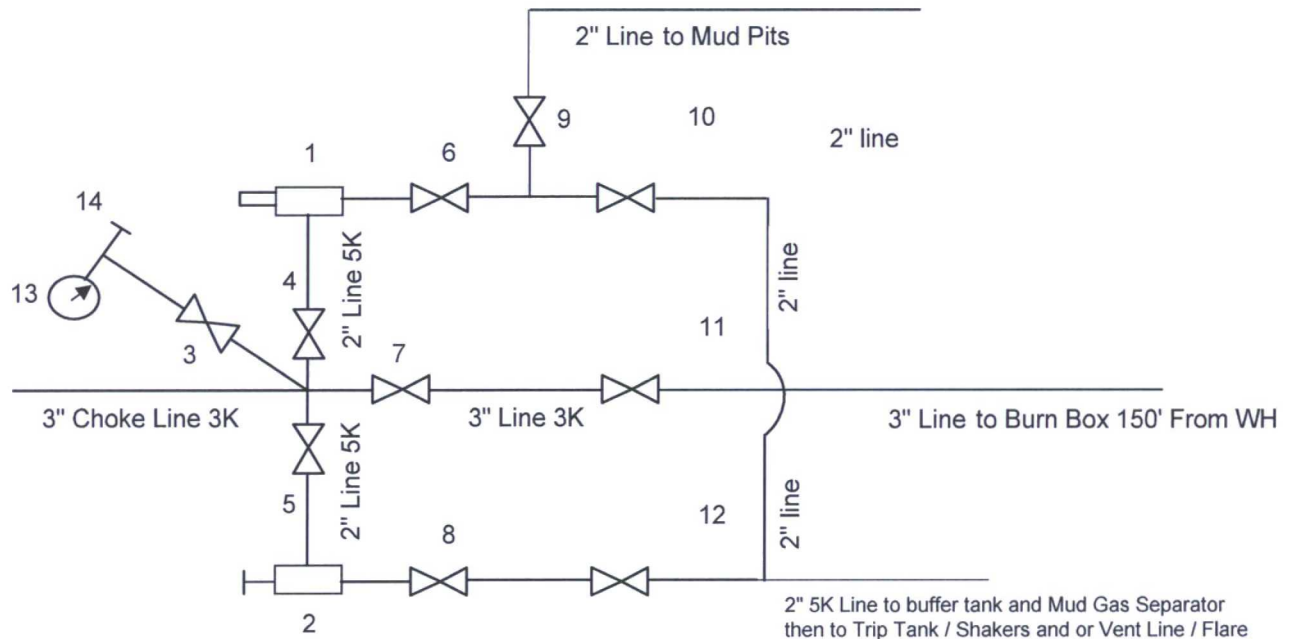
**BLOWOUT PREVENTER ARRANGEMENT - 11" 5M BOPE**  
per Onshore Oil and Gas Order No. 2 utilizing 5M Rated Equipment



Item	Description
1	Rotating Head, 11"
2A	Fill up Line and Valve
2B	Flow Line (10")
2C	Shale Shakers and Solids Settling Tank
2D	Cuttings Bins for Zero Discharge
2E	Rental Mud Gas Separator with vent line to flare and return line to mud system
3	Annular BOP (11", 5M)
4	Double Ram (11", 5M, Blind Ram top x Pipe Ram bottom)
5	Kill Line Connection
6	Kill Line Valve, Inner (2-1/16", 5M)
7	Kill Line Valve, Outer (2-1/16", 5M)
8	Kill Line Check Valve (2-1/16", 5M)
9	Choke Line (3-1/8" 5M Coflex Line)
10	Choke Line Valve, Inner (3-1/8", 5M)
11	Choke Line Valve, Outer, (3-1/8", Hydraulically operated, 5M)
12	Spacer Spool (11", 5M)
13	Casing Head (11" 5M)
14	Casing Head Valve Outlet (2" 5M)
15	Surface Casing

A variance is requested to permit the use of flexible hose. The testing certificate for the specific hose will be available on the rig prior to commencing drilling operations.

**CHOKE MANIFOLD ARRANGEMENT - 3M Choke**  
per Onshore Oil and Gas Order No. 2 utilizing 3M/5M Equipment



Item	Description
1	Remote Controlled Hydraulically Operated Adjustable Choke, 2-1/16", 3M
2	Manual Adjustable Choke, 2-1/16", 3M
3	Gate Valve, 2-1/16" 5M
4	Gate Valve, 2-1/16" 5M
5	Gate Valve, 2-1/16" 5M
6	Gate Valve, 2-1/16" 5M
7	Gate Valve, 3-1/8" 3M
8	Gate Valve, 2-1/16" 5M
9	Gate Valve, 2-1/16" 5M
10	Gate Valve, 2-1/16" 5M
11	Gate Valve, 3-1/8" 3M
12	Gate Valve, 2-1/16" 5M
13	Pressure Gauge
14	2" hammer union tie-in point for BOP Tester

The 3M Choke Manifold & Valves will be tested to rated working pressure.