

Submit 1 Copy To Appropriate District Office
District I - (575) 393-6161
1625 N. French Dr., Hobbs, NM 88240
District II - (575) 748-1283
811 S. First St., Artesia, NM 88210
District III - (505) 334-6178
1000 Rio Brazos Rd., Aztec, NM 87410
District IV - (505) 476-3460
1220 S. St. Francis Dr., Santa Fe, NM 87505

State of New Mexico
Energy, Minerals and Natural Resources

Form C-103
Revised August 1, 2011

HOBBS OCD

APR 10 2017

RECEIVED

OIL CONSERVATION DIVISION
1220 South St. Francis Dr.
Santa Fe, NM 87505

WELL API NO. 30-025-31814
5. Indicate Type of Lease STATE <input type="checkbox"/> FEE <input checked="" type="checkbox"/>
6. State Oil & Gas Lease No.
7. Lease Name or Unit Agreement Name VACUUM GLORIETA WEST UNIT
8. Well Number: 31
9. OGRID Number 4323
10. Pool name or Wildcat VACUUM GLORIETA

SUNDRY NOTICES AND REPORTS ON WELLS
(DO NOT USE THIS FORM FOR PROPOSALS TO DRILL OR TO DEEPEN OR PLUG BACK TO A DIFFERENT RESERVOIR. USE "APPLICATION FOR PERMIT" (FORM C-101) FOR SUCH PROPOSALS.)

1. Type of Well: Oil Well ☐ Gas Well ☐ Other INJECTOR

2. Name of Operator
Chevron U.S.A. INC.

3. Address of Operator
6301 DEAUVILLE BLVD, MIDLAND, TX 79706 RM.N3002

4. Well Location

Unit Letter I : 2520 feet from the SOUTH line and 153 feet from the EAST line
Section 25 Township 17S Range 34E NMPM County Lea

11. Elevation (Show whether DR, RKB, RT, GR, etc.)
3982' GL

12. Check Appropriate Box to Indicate Nature of Notice, Report or Other Data

NOTICE OF INTENTION TO:

PERFORM REMEDIAL WORK ☐ PLUG AND ABANDON ☒
TEMPORARILY ABANDON ☐ CHANGE PLANS ☐
PULL OR ALTER CASING ☐ MULTIPLE COMPL ☐
DOWNHOLE COMMINGLE ☐

OTHER: ☐

SUBSEQUENT

REMEDIAL WORK []
COMMENCE DRILLING OPNS. []
CASING/CEMENT JOB []
INT TO PA ☒
P&A NR _____
P&A R _____

OTHER: _____

13. Describe proposed or completed operations. (Clearly state all pertinent dates, including estimated date of starting any proposed work). SEE RULE 19.15.7.14 NMAC.
proposed completion or recompletion.

NOTIFY OCD 24 HOURS PRIOR TO BEGINNING PLUGGING OPERATIONS

1. Call and notify NMOCD 24 hrs. before operations begin.
2. MIRU. NDWH. NU BOPE.
3. Tag CIBP and cement@5,940' and spot 25sx of cmt. on top. Circulate well w/9.5 ppg mud. Pressure test casing.
4. Spot 25sx of Class "C" cement from 5,058'-4,858', WOC&Tag. (DV Tool)
5. Spot 25sx of Class "C" cement from 2,876'-2,676', WOC&Tag. (B.Salt)
6. Spot 35sx of Class "C" cement from 1,600'-1,300', WOC&Tag. (T.Salt/Shoe)
7. Spot 40sx of Class "C" cement from 350' to surface. (FW/surface)
8. Verify cement to surface on all casings. Cut off wellhead and anchors 3' below grade. Weld on dryhole marker and clean location.
Closed loop above ground tank system will be used for fluids.

I hereby certify that the information above is true and complete to the best of my knowledge and belief.

SIGNATURE M. Lee Roark TITLE Project Manager DATE 04/05/17

Type or print name M. Lee Roark E-mail address: LRoark@Chevron.com PHONE: (432)-687-7279

For State Use Only

APPROVED BY: Mark Whitaker TITLE Petroleum Engr. Specialist DATE 4-10-2017

Conditions of Approval (if any):

CURRENT

VGWU 31 (WIW)

API No. 30-025-31814

Inactive Water Injection Well

Well Location
Unit I
2520 FSL & 153' FEL
Sec 25, T1, S, R34E
Lea Co, NM

GR-3982', KB-3995'

12/21/92 - Spud well

12/28/92 - TD'd well

1/8/93 - C/O 6214', perf 1jspf 6033-58,
6094-6110, acid 3000 gals 15%

1/12/93 - Completed well

8/25/93 - Began inj of FW into well

9/6/06 - TA Well - Test CSG to 560 # leaked
off 30 psi.

11" hole
8-5/8" 24# CSG set @ 1550'
650 sxs, Circ

7-7/8" hole
5-1/2" 15.5 & 17# CSG set @ 6353'
1625sxs, cir 195sxs cmt

DV 5008'

Top of Glorieta @ 5929'

10' CMT
CIBP @ 5950'

Glorieta Marker @ 5991'

~~Perfs:~~ Perfs: 5955-62', 5972-
77', 5992-95', 6002-6008'

Top of Paddock Lime @ 6031'

Perfs: 6033'-58', 6094'-6110'
(2 JSPF, 82 holes)
Ac 3000 gals 15%

Top of Lower Paddock @ 6167'

PBTD = 6212'
TD = 6353'

WELLBORE DIAGRAM
VACUUM GLORIETA WEST UNIT #31
PROPOSED

Created: 04/06/17 By: lrgs
 Updated: By:
 Lease: VACUUM GLORIETA WEST UNIT
 Field: VACUUM GLORIETA
 Surf. Loc.: 2520' FSL & 153' FEL
 Bot. Loc.:
 County: Lea St.: NM
 Status: TA'd Oil well

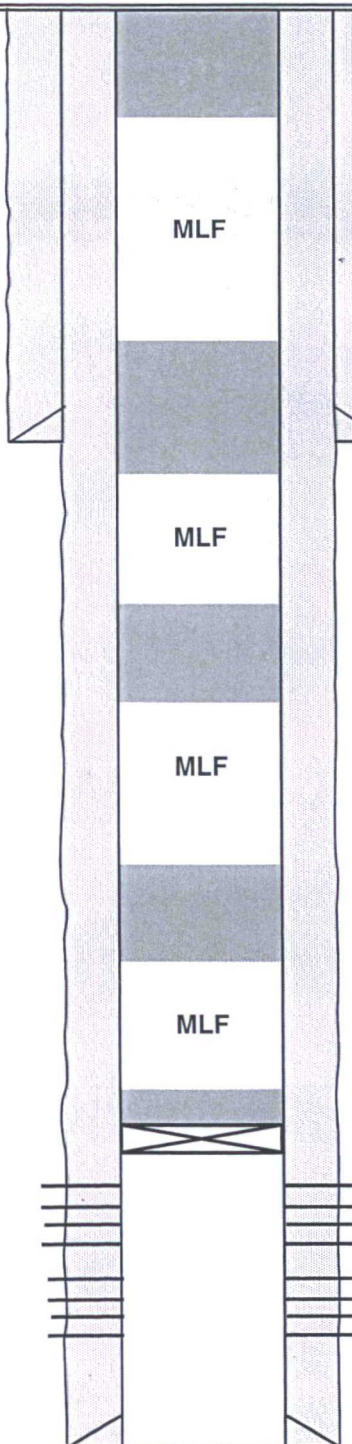
Well #: 31 St. Lse: Fee
 API: 30-025-31814
 Unit Ltr.: I Section: 25
 TSHR/Rng: T17S / R34E
 Pool Code: OGRID:
 Directions:
 Chevno:

Surface Casing

Size: 8 5/8"
 Wt., Grd.: 24#
 Depth: 1550'
 Sxs Cmt: 650
 Circulate: yes
 TOC: surface
 Hole Size: 11"

Production Casing

Size: 5 1/2"
 Wt., Grd.: 15.5#/17#
 Depth: 6353'
 Sxs Cmt: 1625
 Circulate: yes
 TOC: surface
 Hole Size: 7 7/8"



Spot 40sx of Class "C" Cement from 350'-surface, verify. (FW/Surface)

Spot 35sx of Class "C" Cement from 1,600'-1,300', WOC&TAG. (T.Salt/Shoe)

Spot 25sx of Class "C" Cement from 2,876'-2,676', WOC&TAG. (B.Salt)

Spot 25sx of Class "C" Cement from 5,058'-4,858', WOC&TAG. (DV Tool)

Tag and Spot 25sx of Class "C" on top of Cmt. and CIBP@5,940'.
 CIBP @ 5950'+10' CMT.

Perfs: 5955'-6008', Glorieta
 Perfs: 6033' - 66110" Paddock

6353'