

DISTRICT I
1625 N. French Dr., Hobbs, NM 88240
Phone: (575) 393-6161 Fax: (575) 393-0720
DISTRICT II
811 S. First St., Artesia, NM 88210
Phone: (575) 748-1283 Fax: (575) 748-9720
DISTRICT III
1000 Rio Brazos Road, Aztec, NM 87410
Phone: (505) 334-6178 Fax: (505) 334-6170
DISTRICT IV
1220 S. St. Francis Dr., Santa Fe, NM 87505
Phone: (505) 476-3460 Fax: (505) 476-3462

State of New Mexico
Energy, Minerals & Natural Resources Department
OIL CONSERVATION DIVISION
1220 South St. Francis Dr.
Santa Fe, New Mexico 87505

APR 10 2017

RECEIVED

Form C-102
Revised August 1, 2011
Submit one copy to appropriate
District Office

AMENDED REPORT

WELL LOCATION AND ACREAGE DEDICATION PLAT

API Number 30-025-43349	Pool Code 97663	Pool Name Rock Lake: Delaware
Property Code	Property Name LENNOX 33 STATE	Well Number 6H
OGRID No. 240999	Operator Name CAZA OPERATING, LLC	Elevation 3526'

Surface Location

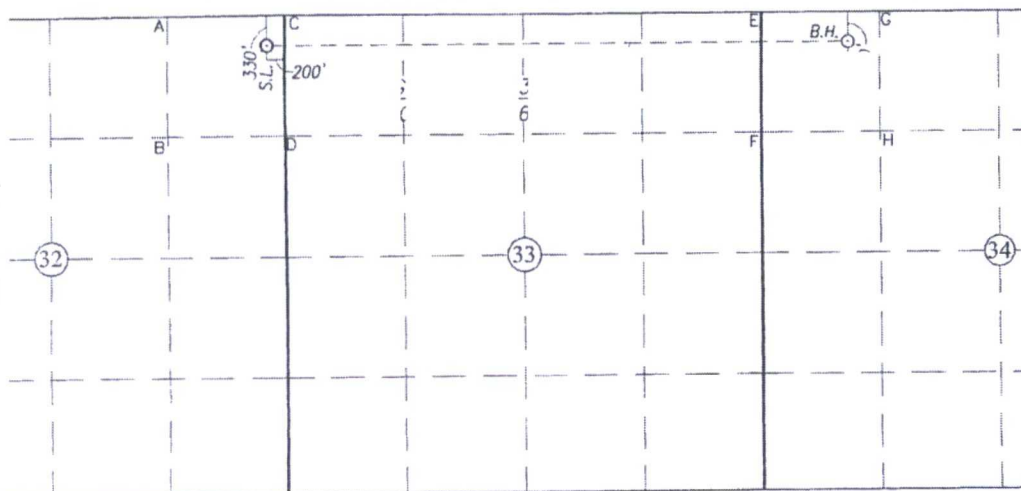
UL or lot No. A	Section 32	Township 22-S	Range 35-E	Lot Idn	Feet from the 330	North/South line NORTH	Feet from the 200	East/West line EAST	County LEA
---------------------------	----------------------	-------------------------	----------------------	---------	-----------------------------	----------------------------------	-----------------------------	-------------------------------	----------------------

Bottom Hole Location If Different From Surface

UL or lot No. D	Section 34	Township 22-S	Range 35-E	Lot Idn	Feet from the 347	North/South line NORTH	Feet from the 940	East/West line WEST	County LEA
---------------------------	----------------------	-------------------------	----------------------	---------	-----------------------------	----------------------------------	-----------------------------	-------------------------------	----------------------

Dedicated Acres 200	Joint or Infill	Consolidation Code	Order No.
-------------------------------	-----------------	--------------------	-----------

NO ALLOWABLE WILL BE ASSIGNED TO THIS COMPLETION UNTIL ALL INTERESTS HAVE BEEN CONSOLIDATED OR A NON-STANDARD UNIT HAS BEEN APPROVED BY THE DIVISION



SCALE: 1"=2000'

GEODETTIC COORDINATES
NAD 83 NME
SURFACE LOCATION
Y=494037.6 N
X=835176.4 E
LAT.=32.354590° N
LONG.=103.381768° W

GEODETTIC COORDINATES
NAD 83 NME
BOTTOM HOLE LOCATION
x=494069.81
y=841609.67
Lat=32.35452 N
Long= 103.360936 W

OPERATOR CERTIFICATION

I hereby certify that the information herein is true and complete to the best of my knowledge and belief, and that this organization either owns a working interest or unleased mineral interest in the land including the proposed bottom hole location or has a right to drill this well at this location pursuant to a contract with an owner of such mineral or working interest, or to a voluntary pooling agreement or a compulsory pooling order heretofore entered by the division.

Signature Date **03/07/2017**

Steve Morris
Printed Name

steve.morris@mojoenergy.com
E-mail Address

SURVEYOR CERTIFICATION

I hereby certify that the well location shown on this plat was plotted from field notes of actual surveys made by me or under my supervision, and that the same is true and correct to the best of my belief.

MAY 10 2016

Date of Survey
Signature & Seal of Professional Surveyor.

Certificate Number Gary G. Eidson 12641
Ronald J. Eidson 3239

ACK JWSC W O 16.11.0357