

Submit 3 Copies To Appropriate District
Office
District I
1625 N. French Dr., Hobbs, NM 87240
District II
1301 W. Grand Ave., Artesia, NM 88210
District III
1000 Rio Brazos Rd., Aztec, NM 87410
District IV
1220 S. St. Francis Dr., Santa Fe, NM
87505

State of New Mexico
Energy, Minerals and Natural Resources

OIL CONSERVATION DIVISION
1220 South St. Francis Dr.
Santa Fe, NM 87505

Form C-103
June 19, 2008

SUNDRY NOTICES AND REPORTS ON WELLS (DO NOT USE THIS FORM FOR PROPOSALS TO DRILL OR TO DEEPEN OR PLUG BACK TO A DIFFERENT RESERVOIR. USE "APPLICATION FOR PERMIT" (FORM C-101) FOR SUCH PROPOSALS.)		WELL API NO. 30-041-20471 ✓
1. Type of Well: Oil Well <input checked="" type="checkbox"/> Gas Well <input type="checkbox"/> Other <input type="checkbox"/>		5. Indicate Type of Lease STATE <input type="checkbox"/> FEE <input checked="" type="checkbox"/> ✓
2. Name of Operator Energen Resources Corporation		6. State Oil & Gas Lease No. 024194
3. Address of Operator 3510 N. A St., Bldgs. A & B Midland, TX 79705		7. Lease Name or Unit Agreement Name: Lambirth A ✓
4. Well Location Unit Letter <u>J</u> : <u>2055</u> feet from the <u>South</u> line and <u>1980</u> feet from the <u>East</u> line Section <u>31</u> Township <u>5S</u> Range <u>33E</u> NMPM County <u>Roosevelt</u>		8. Well Number 1 ✓
11. Elevation (Show whether DR, RKB, RT, GR, etc.) 4410' GR		9. OGRID Number 162928 ✓
		10. Pool name or Wildcat Peterson; Fusselman, South ✓

12. Check Appropriate Box to Indicate Nature of Notice, Report, or Other Data

NOTICE OF INTENTION TO:

PERFORM REMEDIAL WORK ☐ PLUG AND ABANDON ☒
TEMPORARILY ABANDON ☐ CHANGE PLANS ☐
PULL OR ALTER CASING ☐ MULTIPLE COMPL ☐
DOWNHOLE COMMINGLE ☐

OTHER: ☐

SUBSEQUENT REPORT OF:

REMEDIAL WORK ☐ ALTERING CASING ☐
COMMENCE DRILLING OPNS. ☐
CASING/CEMENT JOB ☐
INT TO PA Amx
P&A NR _____
P&A R _____

OTHER: ☐

13. Describe proposed or completed operations. (Clearly state all pertinent details, and give pertinent dates, including estimated date of starting any proposed work). SEE RULE 1103. For Multiple Completions: Attach wellbore diagram of proposed completion or recompletion.

Proposed Plug & Abandon PROCEDURE attached.

Thank you.

Spud Date:

NOTIFY OCD 24 HOURS PRIOR TO
BEGINNING PLUGGING OPERATIONS

I hereby certify that the information above is true and complete to the best of my knowledge and belief.

SIGNATURE Brenda Rathjen TITLE Regulatory Analyst DATE 04/13/2017
brenda.rathjen@energen.com
Type or print name Brenda F. Rathjen E-mail address: _____ PHONE 432/688-3323

For State Use Only
APPROVED BY Mark Whitaker TITLE Petroleum Engr. Specialist DATE 04/13/2017
Conditions of Approval (if any): _____

ENERGEN RESOURCES CORPORATION

Lambirth A #001, API # 30-041-20471

AFE # PB17500144, \$30,000

2055' FSL, 1980' FEL

Sec. 31, T-5-S, R-33-E

Roosevelt County, NM

The Lambirth A #001 was spud 11/19/78, and was completed 1/11/79 as a Fusselman producer. The last production was in 2000, and the well was TA'd 1/4/06. It needs to be P&A'd to remove it from the New Mexico "Inactive Well List".

For scope changes during work, stop and discuss with engineering before proceeding

API:	30-041-20471	KB:	4427'	PBTD:	7790' (CIBP)
Spud Date:	11/19/1978	GLE:	4411'	TD:	7995'

Plug and Abandon Procedure

SAFETY CONSIDERATIONS

Observe all Energen Guidelines for PPE and H2S Safety
Observe perforation and contractor safety guidelines
Wireline and explosives on location while perforating
Workstring should be in good condition and tested to 5000 psi.
BOP should be in good working condition and tested
Rig anchors will need to be tested prior to MIRU
Keep a TIW valve open and on the rig floor at all times

Notify the NM OCD 24 hours prior to starting P&A operations

Meet with engineer, superintendents, and consultant prior to beginning the job,
to assure that everyone is agreement with the procedure.

Bid as a turnkey project.

- 1 MIRU Well Service Unit.
- 2 Bleed well down.
- 3 NDWH
- 4 NU adapter flange and BOP for 5-1/2" csg and 2-7/8" tubing. Test to 500 psi above working pressure.
- 5 Unload and rack 7,900' 2-7/8" workstring. Maintain kill truck w/10 ppg brine on location.
- 6 RIH with workstring. Tag CIBP @7790'.
- 7 ~~Dump ball 5 sx cmt~~ or 25 sx through tubing
- 8 Circulate hole to 10 ppg mud and pressure test csg to 500 psi.
- 9 RIH w/ workstring and packer. Tag cmt above CIBP.
- 10 Perforate and squeeze at 6573' w/ 35 sxs cement plug and displace to 6473'.
- 11 WOC and tag.
- 12 Perforate and squeeze at 3550' w/ 35 sxs cement plug and displace to 3450'. (shoe)
- 13 WOC and tag.
- 14 Perf and squeeze spot 40 sxs Class "C" cement at 2750', WOC and tag
- 15 Perf and squeeze 40 sxs Class "C" cement at 1900-1800', WOC and tag
- 16 Perf and squeeze from 405' to surface (shoe)
- 17 ND BOP. Top off well with cement. Verify cement to surface all string.
- 18 RD and clean loaction.
- 19 Cut off all casing strings at base of cellar or 3' below restored ground level. *Verify cement to surface all strings*
- 20 Cover wellbore with metal plate welded in place or with cement cap.
- 21 Erect capped abandonment marker inscribed with well information.
- 22 Cut off dead man anchors and fill in cellar. RDMO.
- 23 Clean and restore location to natural condition and fulfill any and all regulatory and land requirements.

ENERGEN RESOURCES CORPORATION

Lambirth A #1
Roosevelt Co., NM

Conductor:

None

Surface Casing:

13-3/8", 48# & 54.5#, H-40
and K-55 in 17-1/2" hole
@355' w/ 420 sx "C",
circulated

Intermediate Casing

8-5/8", 24#, K-55 @3500' in
11" hole w/ 2000 sx, circ 100
sx

Production Casing:

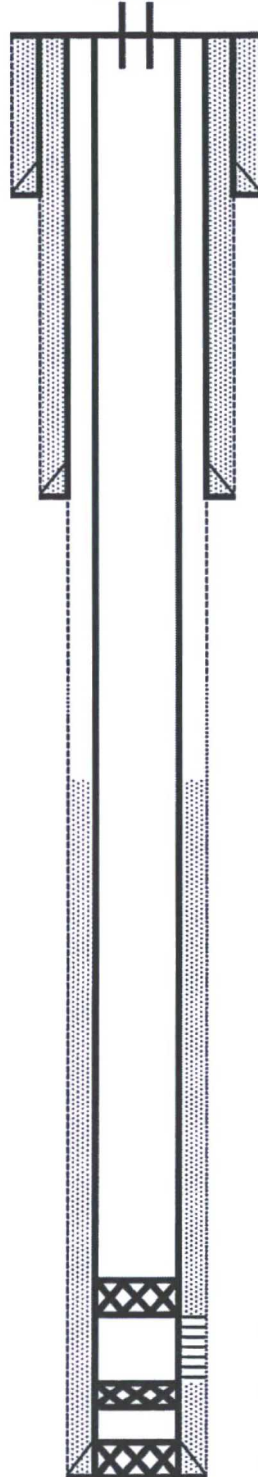
5-1/2", 15.5# & 17#, N-80/K-
55 in 7-7/8" hole @ 7995', w/
400 sx "H", TOC 5780' by
John West Engr T.S.

PBTD 7790' CIBP

TD 7995'

KRP 3/17/17

Current Conditions:
17-Mar-17



GL Elevation: 4411'

KB Elevation: 4427'

Location: 2055' FSL' & 1980' FEL,
Sec 31, T-5-S, R-33-E

API # 30-041-20471

100% W.I.

Peterson (Fusselman), South

Spud 11/19/78

Completed 1/11/79

TA'd: 01/04/2006

TOC = 5780' by TS

CIBP @7790' (TA'd 1/4/06)

7830'-7838' (16 holes)

Perfs 7852'-7858', 12 holes

CIBP @ 7880'

CIBP pushed to bottom

ENERGEN RESOURCES CORPORATION

Lambirth A #1
Roosevelt Co., NM

Conductor:
None

Surface Casing:
13-3/8", 48# & 54.5#, H-40
and K-55 in 17-1/2" hole
@355' w/ 420 sx "C",
circulated

Intermediate Casing
8-5/8", 24#, K-55 @3500' in
11" hole w/ 2000 sx, circ 100
sx

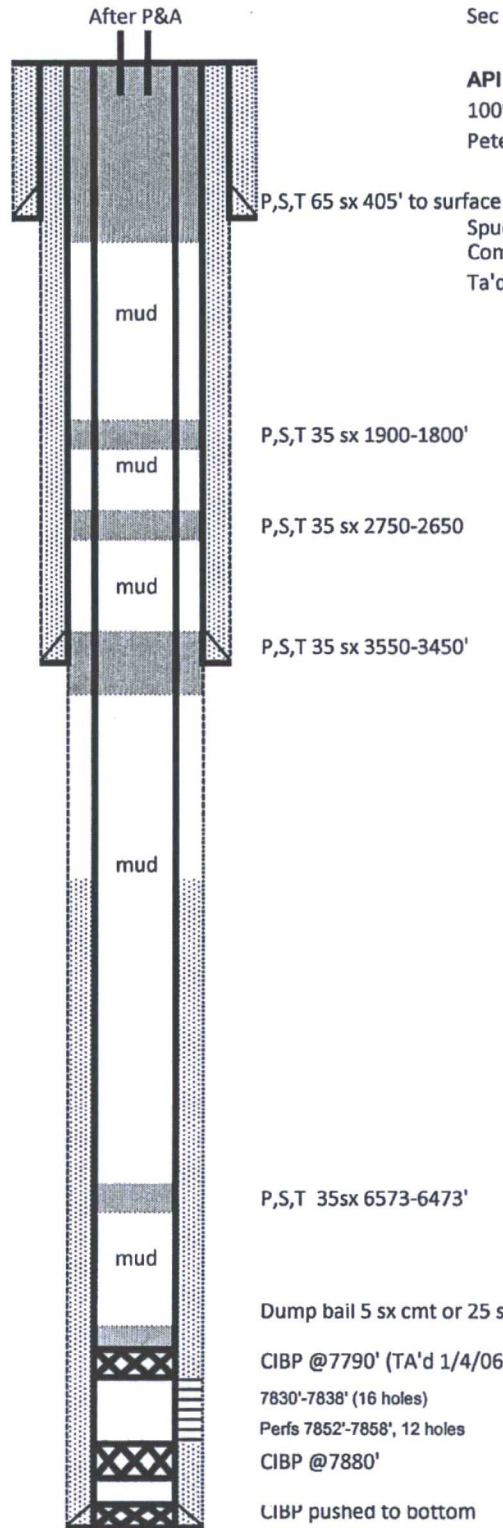
TOC = 5780' by TS

Production Casing:
5-1/2", 15.5# & 17#, N-80/K-
55 in 7-7/8" hole @ 7995', w/
400 sx "H", TOC 5780' by
John West Engr T.S.

PBTD 7790' CIBP
TD 7995'
KRP 4/12/17

GL Elevation: 4411'
KB Elevation: 4427'
Location: 2055' FSL' & 1980' FEL,
Sec 31, T-5-S, R-33-E

API # 30-041-20471
100% W.I.
Peterson (Fusselman), South



P,S,T 65 sx 405' to surface

Spud 11/19/78
Completed 1/11/79
Ta'd: 01/04/2006

P,S,T 35 sx 1900-1800'

P,S,T 35 sx 2750-2650

P,S,T 35 sx 3550-3450'

P,S,T 35sx 6573-6473'

Dump bail 5 sx cmt or 25 sx thru tbq

CIBP @7790' (TA'd 1/4/06)

7830'-7838' (16 holes)
Perfs 7852'-7858', 12 holes
CIBP @7880'

LIBP pushed to bottom