

District I
1625 N. French Dr., Hobbs, NM 88240
Phone: (575) 393-6161 Fax: (575) 393-0720
District II
811 S. First St., Artesia, NM 88210
Phone: (575) 748-1283 Fax: (575) 748-9720
District III
1000 Rio Brazos Road, Aztec, NM 87410
Phone: (505) 334-6178 Fax: (505) 334-6170
District IV
1220 S. St. Francis Dr., Santa Fe, NM 87505
Phone: (505) 476-3460 Fax: (505) 476-3462

State of New Mexico
Energy, Minerals & Natural Resources
Department **HOEBS OCD**
OIL CONSERVATION DIVISION
1220 South St. Francis Dr. **APR 14 2017**
Sante Fe, NM 87505

FORM C-102

Revised August 1, 2011

Submit one copy to appropriate

District Office

☐ AMENDED REPORT

RECEIVED

WELL LOCATION AND ACREAGE DEDICATION PLAT

¹ API Number 30-025- 43454	² Pool Code 59900	³ Pool Name Triple X; Bone Spring
⁴ Property Code 313956	⁵ Property Name NEPTUNE 10 STATE COM	⁶ Well Number 503H
⁷ OGRID No. 7377	⁸ Operator Name EOG RESOURCES, INC.	⁹ Elevation 3609'

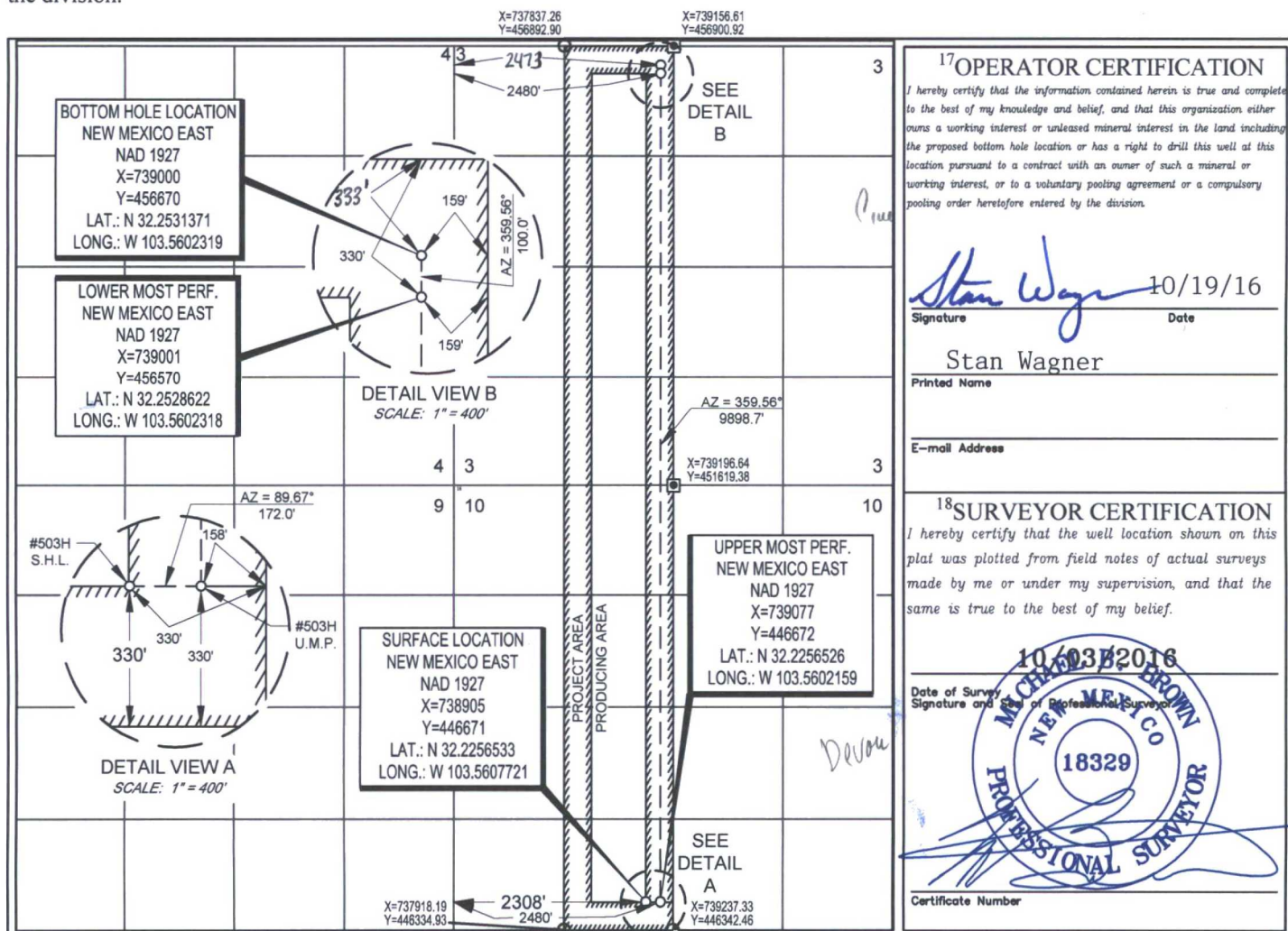
¹⁰Surface Location

UL or lot no.	Section	Township	Range	Lot Idn	Feet from the	North/South line	Feet from the	East/West line	County
N	10	24-S	33-E	-	330'	SOUTH	2308'	WEST	LEA

UL or lot no.	Section	Township	Range	Lot Idn	Feet from the	North/South line	Feet from the	East/West line	County
C	3	24-S	33-E	-	333'	NORTH	2473'	WEST	LEA

¹² Dedicated Acres 320.10	¹³ Joint or Infill	¹⁴ Consolidation Code	¹⁵ Order No.
---	-------------------------------	----------------------------------	-------------------------

No allowable will be assigned to this completion until all interests have been consolidated or a non-standard unit has been approved by the division.



SCALE: 1" = 2000'

0' 1000' 2000'

SECTION 10 TOWNSHIP 24-S, RANGE 33-E, N.M.P.M.
LEA COUNTY, NEW MEXICO



LOWER MOST PERFORATION
NEW MEXICO EAST
NAD 1927
X=738994
Y=456455
LAT.: N 32.2525458
LONG.: W 103.5602570
MD = 21044'

BOTTOM HOLE LOCATION
NEW MEXICO EAST
NAD 1927
X=738993
Y=456567
LAT.: N 32.2528541
LONG.: W 103.5602551
MD = 21156'

SURFACE LOCATION
NEW MEXICO EAST
NAD 1927
X=738905
Y=446670
LAT.: N 32.2256531
LONG.: W 103.5607721

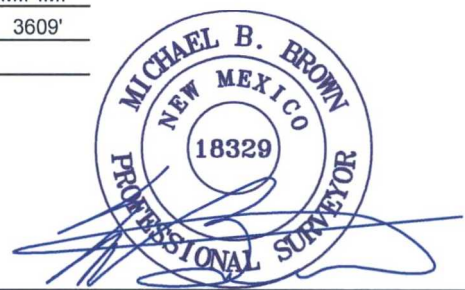
UPPER MOST PERFORATION
NEW MEXICO EAST
NAD 1927
X=739061
Y=446802
LAT.: N 32.2260114
LONG.: W 103.5602621
MD = 11385'

POINT	UTM ZONE 13 COORDINATES
SHL	X=2085356.348 Y=11700003.037
UMP	X=2085512.281 Y=11700135.454
LMP	X=2085384.466 Y=11709786.240
BHL	X=2085383.568 Y=11709898.385

LEASE NAME & WELL NO.: NEPTUNE 10 STATE COM #503H
SECTION 10 TWP 24-S RGE 33-E SURVEY N.M.P.M.
COUNTY LEA STATE NM ELEVATION 3609'
DESCRIPTION 330' FSL & 2308' FWL



1400 EVERMAN PARKWAY, Ste. 197 • FT. WORTH, TEXAS 76140
TELEPHONE: (817) 744-7512 • FAX (817) 744-7548
2903 NORTH BIG SPRING • MIDLAND, TEXAS 79705
TELEPHONE: (432) 682-1653 OR (800) 767-1653 • FAX (432) 682-1743
WWW.TOPOGRAPHIC.COM



Michael Blake Brown, P.S. No. 18329
MARCH 2, 2017



NEPTUNE 10 STATE COM #503H AS-COMPLETED	REVISION:	NOTES:
		1. ORIGINAL DOCUMENT SIZE: 8.5" X 11"
		2. ALL BEARINGS, DISTANCES, AND COORDINATE VALUES CONTAINED HEREIN ARE GRID BASED UPON THE NEW MEXICO STATE PLANE COORDINATE SYSTEM, EAST ZONE, U.S. SURVEY FEET, NORTH AMERICAN DATUM 1927.
		3. THIS WELL LOCATION SHOWN HEREON HAS BEEN SURVEYED ON THE GROUND UNDER MY SUPERVISION AND PREPARED ACCORDING TO THE EVIDENCE FOUND AT THE TIME OF SURVEY, AND DATA PROVIDED BY EOG RESOURCES, INC. THIS CERTIFICATION IS MADE AND LIMITED TO THOSE PERSONS OR ENTITIES SHOWN ON THE FACE OF THIS PLAT AND IS NON-TRANSFERABLE. THIS SURVEY IS CERTIFIED FOR THIS TRANSACTION ONLY.
DATE: 03/02/2017		
FILE:AD_NEPTUNE10STATE_COM_503H		
DRAWN BY: A.C.C.		
SHEET: 1 OF 1		