

DISTRICT I
1625 N. French Dr., Hobbs, NM 88240
Phone (505) 593-6161 Fax: (505) 393-0720

DISTRICT II
811 S. First St., Artesia, NM 88210
Phone (505) 748-1255 Fax: (505) 748-0720

DISTRICT III
1000 Rio Brazos Rd., Artec, NM 87410
Phone (505) 334-6176 Fax: (505) 334-6170

DISTRICT IV
1226 S. St. Francis Dr., Santa Fe, NM 87505
Phone (505) 476-3480 Fax: (505) 476-3482

State of New Mexico
Energy, Minerals and Natural Resources Department

Form C-102
Revised August 1, 2011

Submit one copy to appropriate
District Office

OIL CONSERVATION DIVISION
1226 South St. Francis Dr.
Santa Fe, New Mexico 87505

WELL LOCATION AND ACREAGE DEDICATION PLAT

AMENDED REPORT

API Number 30-025-42733	Pool Code WC-98230	Pool Name WC-025 G-09 Wildcat - Wolfcamp Pool
Property Code	Property Name WILDHOG BWX STATE COM	Well Number 1H
OGRID No. 372031	Operator Name OneEnergy Partners Operating, LLC	Elevation 2943'

Surface Location

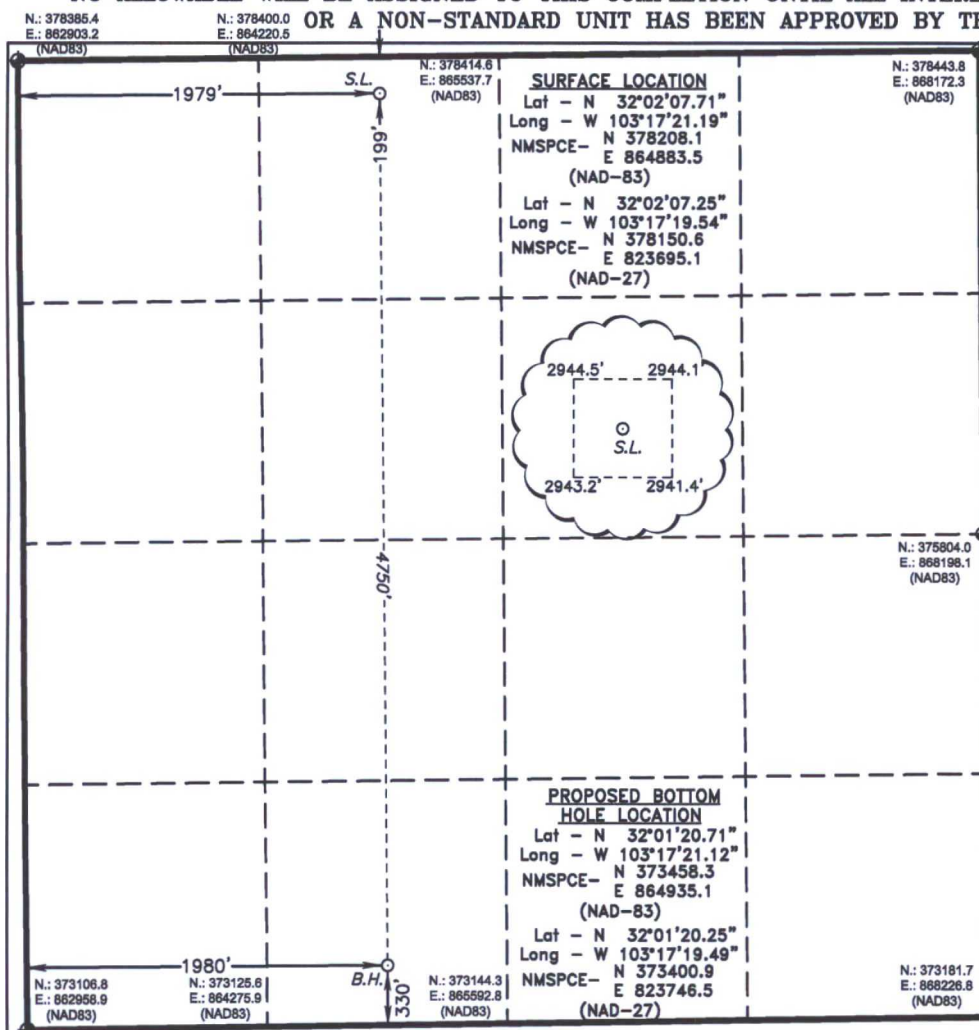
UL or lot No.	Section	Township	Range	Lot Idn	Feet from the	North/South line	Feet from the	East/West line	County
C	20	26 S	36 E		199	NORTH	1979	WEST	LEA

Bottom Hole Location If Different From Surface

UL or lot No.	Section	Township	Range	Lot Idn	Feet from the	North/South line	Feet from the	East/West line	County
N	20	26 S	36 E		330	SOUTH	1980	WEST	LEA

Dedicated Acres	Joint or Infill	Consolidation Code	Order No.
160.00			

NO ALLOWABLE WILL BE ASSIGNED TO THIS COMPLETION UNTIL ALL INTERESTS HAVE BEEN CONSOLIDATED OR A NON-STANDARD UNIT HAS BEEN APPROVED BY THE DIVISION



OPERATOR CERTIFICATION

I hereby certify that the information contained herein is true and complete to the best of my knowledge and belief, and that this organization either owns a working interest or unleased mineral interest in the land including the proposed bottom hole location or has a right to drill this well at this location pursuant to a contract with an owner of such a mineral or working interest, or to a voluntary pooling agreement or a compulsory pooling order heretofore entered by the division.

Signature: *Jeff Lierly* Date: 4.7.2017
Printed Name: Jeff Lierly
Email Address: jlierly@oneenergypartners.com

SURVEYOR CERTIFICATION

I hereby certify that the well location shown on this plat was plotted from field notes of actual surveys made by me or under my supervision, and that the same is true and correct to the best of my belief.

Date Surveyed: APR 03, 2011
Signature: *[Signature]*
Professional Surveyor: 7977
Certificate: 7977
BASIC SURVEY

Scale: 0' 500' 1000' 1500' 2000'
SCALE: 1" = 1000'
WO Num.: 32831