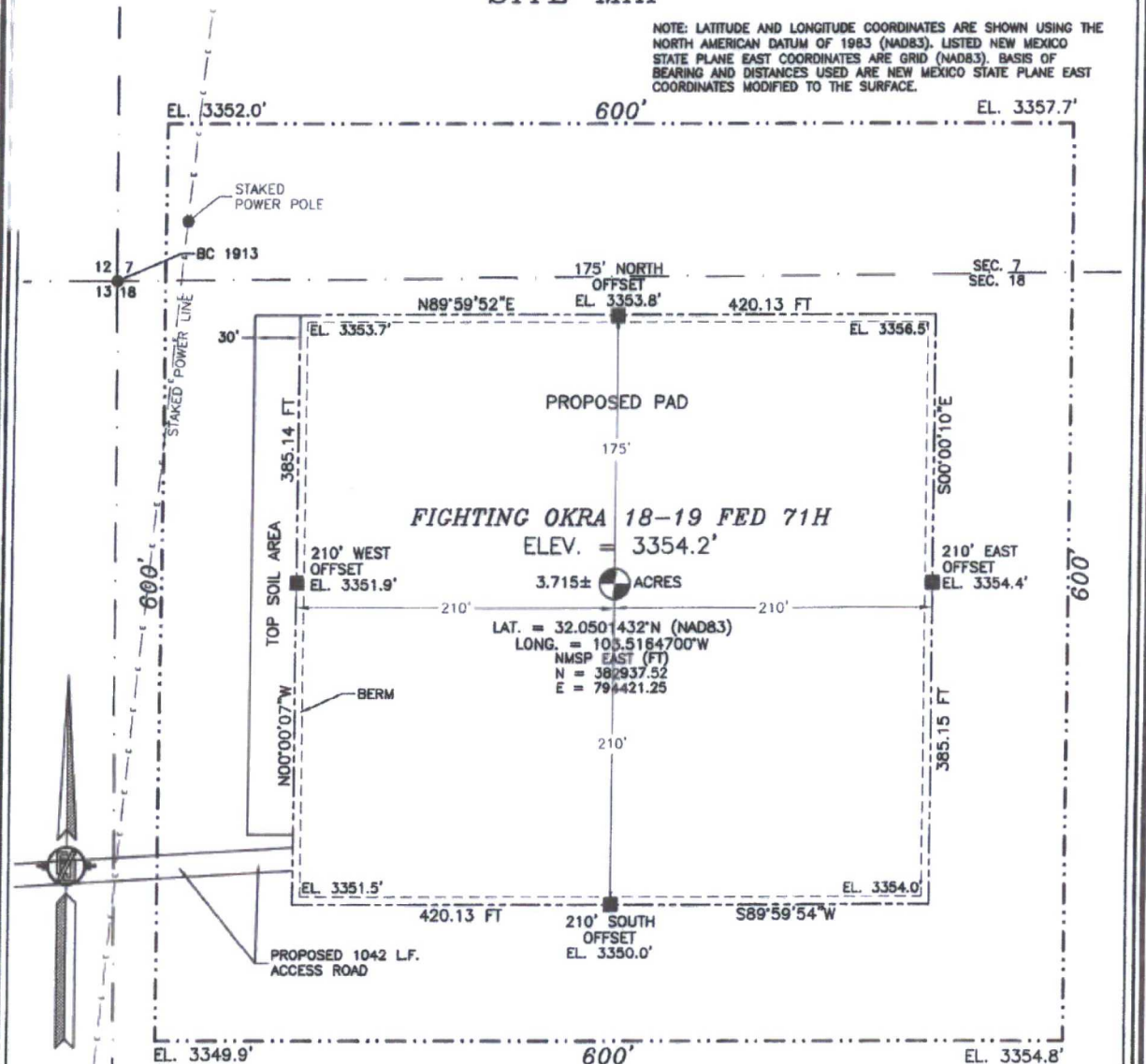


HOBBS OCD  
MAR 29 2017  
RECEIVED

SECTION 18, TOWNSHIP 26 SOUTH, RANGE 34 EAST, N.M.P.M.  
LEA COUNTY, STATE OF NEW MEXICO  
SITE MAP

NOTE: LATITUDE AND LONGITUDE COORDINATES ARE SHOWN USING THE NORTH AMERICAN DATUM OF 1983 (NAD83). LISTED NEW MEXICO STATE PLANE EAST COORDINATES ARE GRID (NAD83). BASIS OF BEARING AND DISTANCES USED ARE NEW MEXICO STATE PLANE EAST COORDINATES MODIFIED TO THE SURFACE.



010 50 100 200  
SCALE 1" = 100'

DIRECTIONS TO LOCATION

FROM THE INTERSECTION OF NM HWY 128 (JAL HWY) AND CR 2 (BATTLE AXE ROAD) GO SOUTH ON BATTLE AXE ROAD 12.31 MILES, TURN LEFT ON A CALICHE LEASE ROAD GO SOUTH 0.65 MILE TO PIPELINE ROAD TURN LEFT GO EAST 1.81 MILES TURN RIGHT AT CALICHE LEASE ROAD GO SOUTH 1.55 MILES TO CALICHE LEASE ROAD ON RIGHT GO WEST 0.81 MILE TO A BEND IN THE ROAD TO THE NORTH, FOLLOW FLAGGED LINE WEST ABOUT 1136 FT TO NORTH-SOUTH CALICHE LEASE ROAD GO NORTH 3028 L.F. (0.57 MILE) TO PROPOSED ROAD ON RIGHT FOLLOW FLAGS EAST ABOUT 352 L.F. TO THE SOUTHWEST CORNER OF SEAWOLF 12 FED 1H THEN FOLLOW FLAGS ALONG THE SOUTH LINE OF SAID SEAWOLF 12 FED 1H EAST ABOUT 1042 L.F. TO THE SOUTHWEST CORNER OF THE PROPOSED PAD

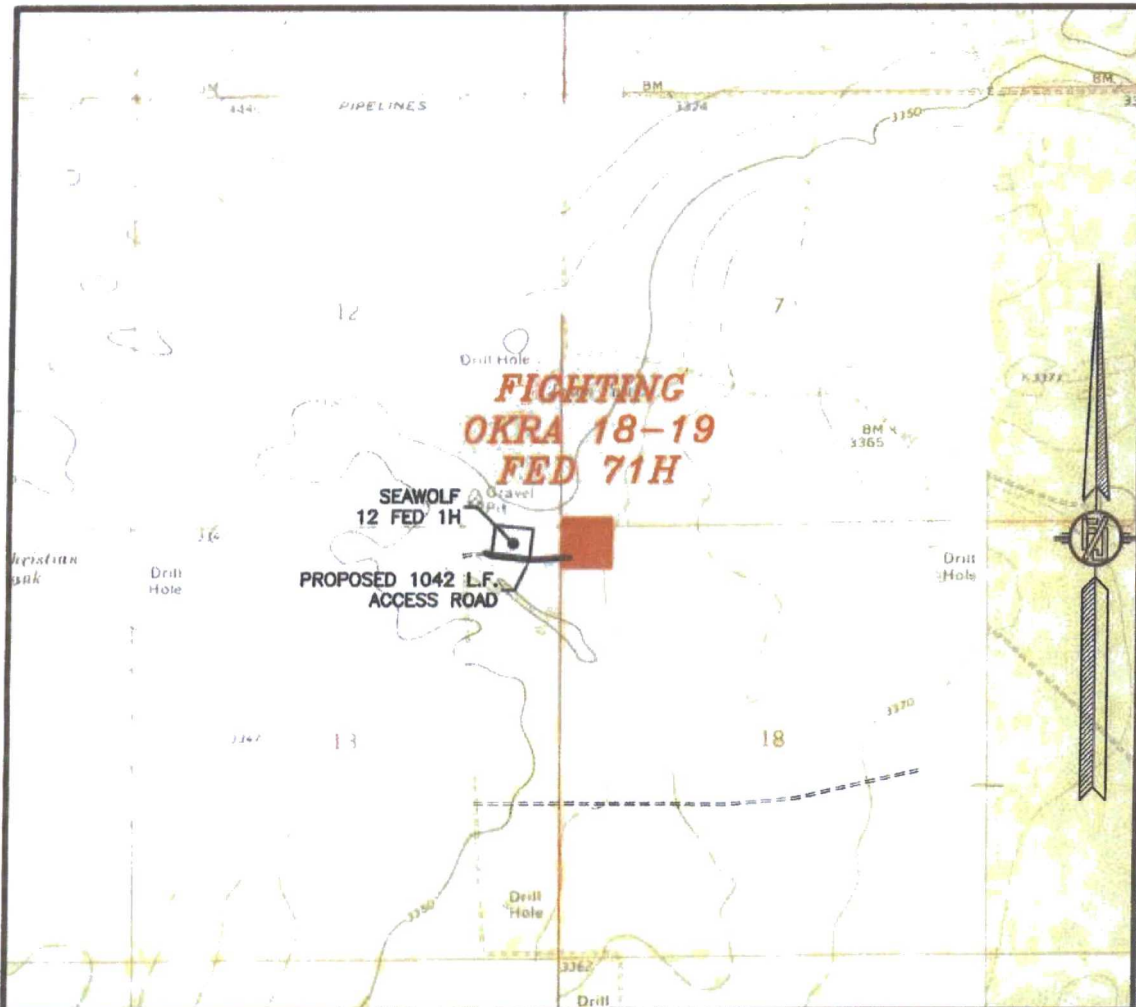
DEVON ENERGY PRODUCTION COMPANY, L.P.  
FIGHTING OKRA 18-19 FED 71H  
LOCATED 200 FT. FROM THE NORTH LINE  
AND 330 FT. FROM THE WEST LINE OF  
SECTION 18, TOWNSHIP 26 SOUTH,  
RANGE 34 EAST, N.M.P.M.  
LEA COUNTY, STATE OF NEW MEXICO

APRIL 19, 2015

SURVEY NO. 3838

MADRON SURVEYING, INC. 301 SOUTH CANAL (575) 234-3341 CARLSBAD, NEW MEXICO

SECTION 18, TOWNSHIP 26 SOUTH, RANGE 34 EAST, N.M.P.M.  
LEA COUNTY, STATE OF NEW MEXICO  
LOCATION VERIFICATION MAP



USGS QUAD MAP:  
PADUCA BREAKS EAST

NOT TO SCALE

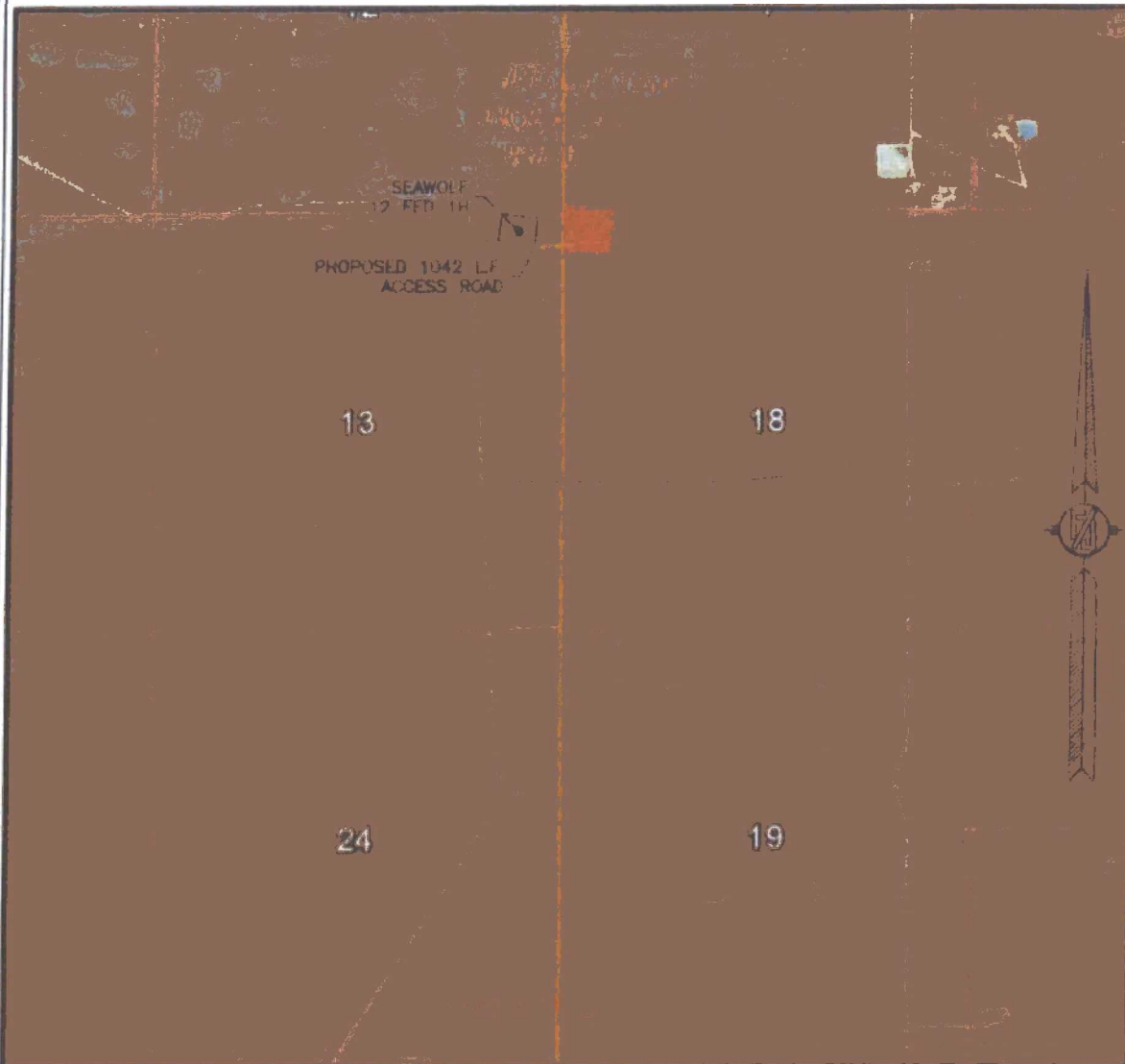
DEVON ENERGY PRODUCTION COMPANY, L.P.  
**FIGHTING OKRA 18-19 FED 71H**  
LOCATED 200 FT. FROM THE NORTH LINE  
AND 330 FT. FROM THE WEST LINE OF  
SECTION 18, TOWNSHIP 26 SOUTH,  
RANGE 34 EAST, N.M.P.M.  
LEA COUNTY, STATE OF NEW MEXICO

APRIL 19, 2015

SURVEY NO. 3838

MADRON SURVEYING, INC. 301 SOUTH CANAL (575) 234-3341 CARLSBAD, NEW MEXICO

SECTION 18, TOWNSHIP 26 SOUTH, RANGE 34 EAST, N.M.P.M.  
LEA COUNTY, STATE OF NEW MEXICO  
AERIAL PHOTO



NOT TO SCALE  
AERIAL PHOTO:  
GOOGLE EARTH  
APR. 2013

DEVON ENERGY PRODUCTION COMPANY, L.P.  
FIGHTING OKRA 18-19 FED 71H  
LOCATED 200 FT. FROM THE NORTH LINE  
AND 330 FT. FROM THE WEST LINE OF  
SECTION 18, TOWNSHIP 26 SOUTH,  
RANGE 34 EAST, N.M.P.M.  
LEA COUNTY, STATE OF NEW MEXICO

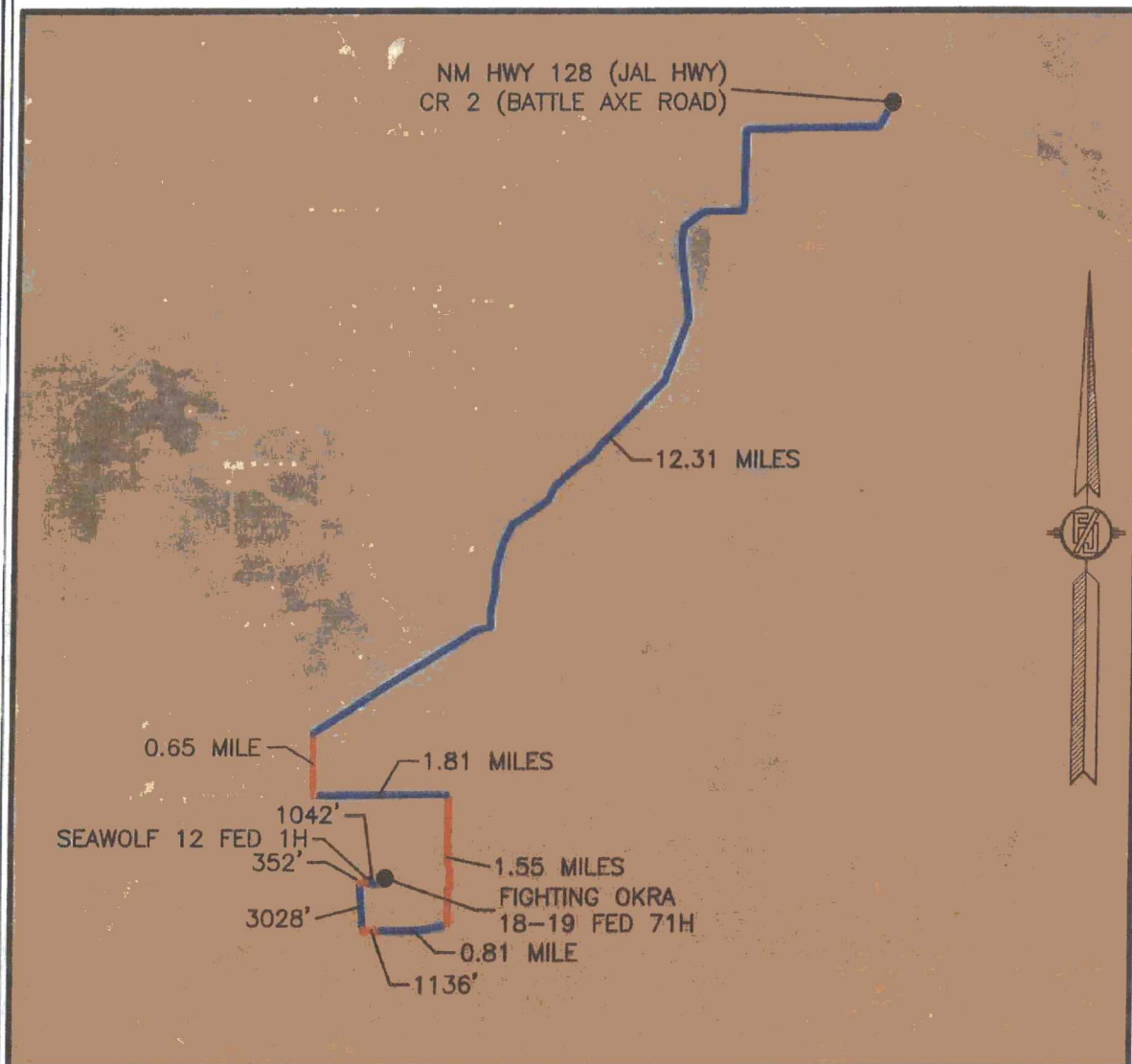
APRIL 19, 2015

SURVEY NO. 3838

MADRON SURVEYING, INC. 301 SOUTH CANAL (575) 234-3341 CARLSBAD, NEW MEXICO



SECTION 18, TOWNSHIP 26 SOUTH, RANGE 34 EAST, N.M.P.M.  
LEA COUNTY, STATE OF NEW MEXICO  
AERIAL ACCESS ROUTE MAP



NOT TO SCALE  
AERIAL PHOTO:  
GOOGLE EARTH  
APR. 2013

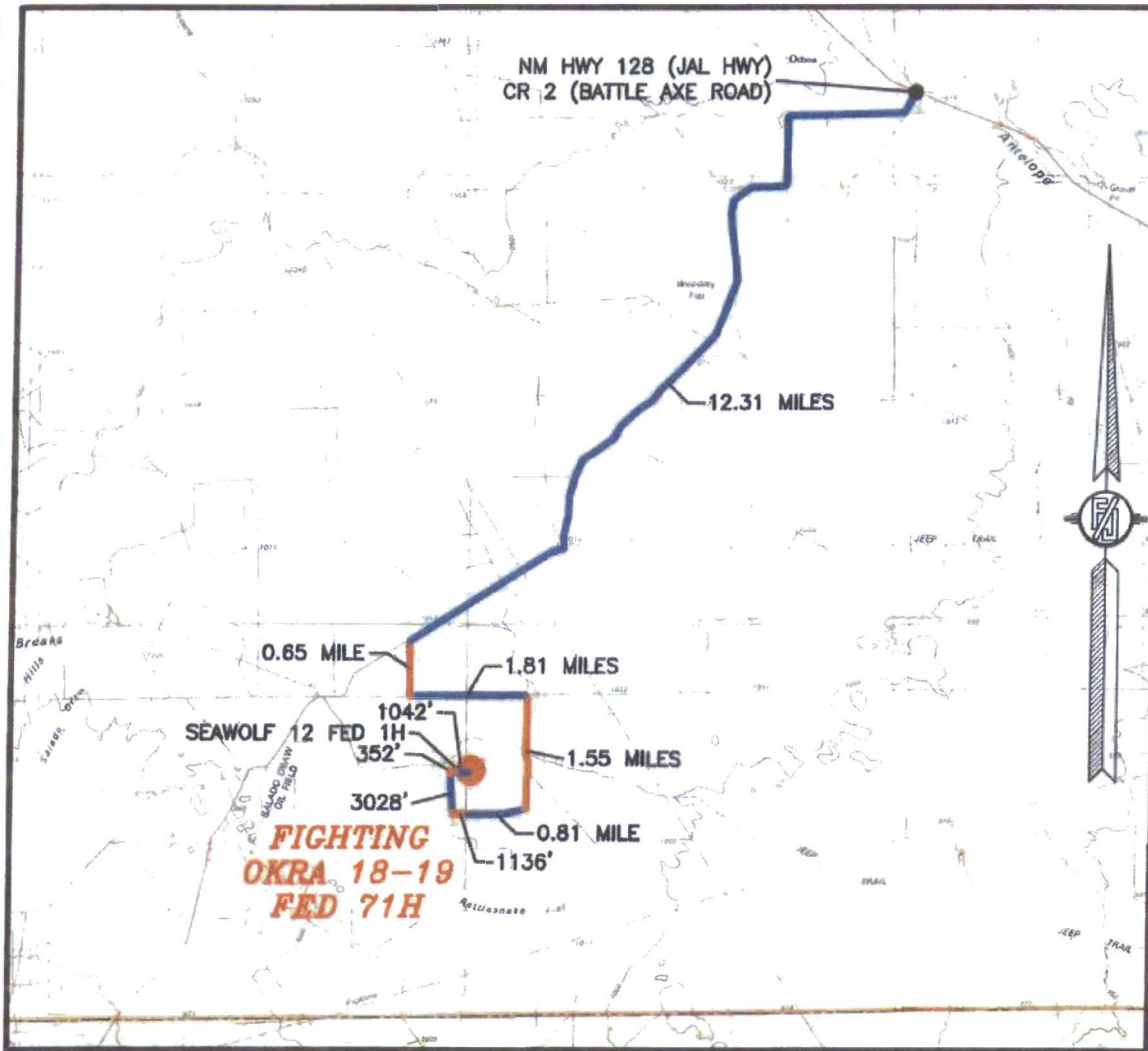
DEVON ENERGY PRODUCTION COMPANY, L.P.  
FIGHTING OKRA 18-19 FED 71H  
LOCATED 200 FT. FROM THE NORTH LINE  
AND 330 FT. FROM THE WEST LINE OF  
SECTION 18, TOWNSHIP 26 SOUTH,  
RANGE 34 EAST, N.M.P.M.  
LEA COUNTY, STATE OF NEW MEXICO

APRIL 19, 2015

SURVEY NO. 3838

MADRON SURVEYING, INC. 301 SOUTH CANAL (575) 234-3341 CARLSBAD, NEW MEXICO

SECTION 18, TOWNSHIP 26 SOUTH, RANGE 34 EAST, N.M.P.M.  
LEA COUNTY, STATE OF NEW MEXICO  
VICINITY MAP



DISTANCES IN MILES

NOT TO SCALE

**DIRECTIONS TO LOCATION**

FROM THE INTERSECTION OF NM HWY 128 (JAL HWY) AND CR 2 (BATTLE AXE ROAD) GO SOUTH ON BATTLE AXE ROAD 12.31 MILES, TURN LEFT ON A CALICHE LEASE ROAD GO SOUTH 0.65 MILE TO PIPELINE ROAD TURN LEFT GO EAST 1.81 MILES TURN RIGHT AT CALICHE LEASE ROAD GO SOUTH 1.55 MILES TO CALICHE LEASE ROAD ON RIGHT GO WEST 0.81 MILE TO A BEND IN THE ROAD TO THE NORTH, FOLLOW FLAGGED LINE WEST ABOUT 1136 FT TO NORTH-SOUTH CALICHE LEASE ROAD GO NORTH 3028 L.F. (0.57 MILE) TO PROPOSED ROAD ON RIGHT FOLLOW FLAGS EAST ABOUT 352 L.F. TO THE SOUTHWEST CORNER OF SEAWOLF 12 FED 1H THEN FOLLOW FLAGS ALONG THE SOUTH LINE OF SAID SEAWOLF 12 FED 1H EAST ABOUT 1042 L.F. TO THE SOUTHWEST CORNER OF THE PROPOSED PAD

DEVON ENERGY PRODUCTION COMPANY, L.P.  
**FIGHTING OKRA 18-19 FED 71H**  
LOCATED 200 FT. FROM THE NORTH LINE  
AND 330 FT. FROM THE WEST LINE OF  
SECTION 18, TOWNSHIP 26 SOUTH,  
RANGE 34 EAST, N.M.P.M.  
LEA COUNTY, STATE OF NEW MEXICO

APRIL 19, 2015

SURVEY NO. 3838

MADRON SURVEYING, INC. 301 SOUTH CANAL (575) 234-3341 CARLSBAD, NEW MEXICO