

DISTRICT I
1625 N. French Dr., Hobbs, NM 88240
Phone (575) 393-8181 Fax: (575) 393-0720

DISTRICT II
811 S. First St., Artesia, NM 88210
Phone (575) 748-1283 Fax: (575) 748-9720

DISTRICT III
1000 Rio Brazos Rd., Aztec, NM 87410
Phone (505) 334-6178 Fax: (505) 334-6170

DISTRICT IV
1220 S. St. Francis Dr., Santa Fe, NM 87505
Phone (505) 476-3469 Fax: (505) 476-3465

State of New Mexico
Energy, Minerals and Natural Resources Department

OIL CONSERVATION DIVISION
1220 South St. Francis Dr.
Santa Fe, New Mexico 87505

Form C-102
Revised August 1, 2011

Submit one copy to appropriate
District Office

WELL LOCATION AND ACREAGE DEDICATION PLAT

☐ AMENDED REPORT

API Number 30-028-43430	Pool Code 98180	Pool Name WC-028 G-09 3253309P. 4R2 WC Undesignated, Bone Springs
Property Code 316814	Property Name AUDACIOUS BTL FEDERAL COM	Well Number 2H
OGRID No. 7377	Operator Name EOG Resources, Inc.	Elevation 3449

Surface Location

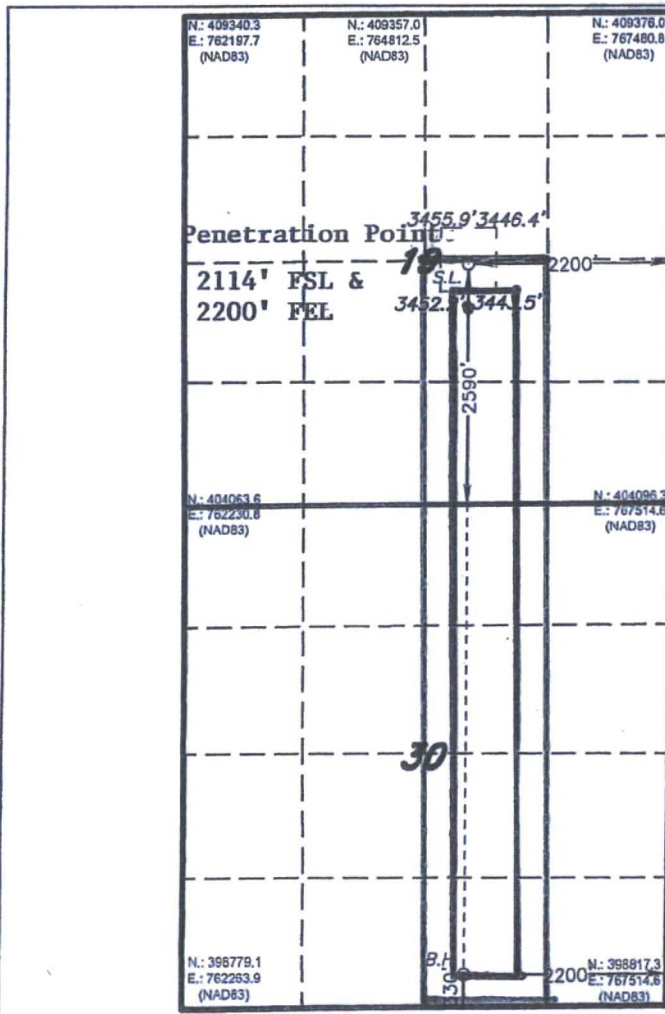
UL or lot No.	Section	Township	Range	Lot Idn	Feet from the	North/South line	Feet from the	East/West line	County
J	19	25 S	33 E		2590	SOUTH	2200	EAST	LEA

Bottom Hole Location If Different From Surface

UL or lot No.	Section	Township	Range	Lot Idn	Feet from the	North/South line	Feet from the	East/West line	County
O	30	25 S	33 E		316	SOUTH	2216	EAST	LEA

Dedicated Acres	Joint or Infill	Consolidation Code	Order No.
240.00			

NO ALLOWABLE WILL BE ASSIGNED TO THIS COMPLETION UNTIL ALL INTERESTS HAVE BEEN CONSOLIDATED
OR A NON-STANDARD UNIT HAS BEEN APPROVED BY THE DIVISION



SURFACE LOCATION
Lat - N 32°06'57.57"
Long - W 103°36'35.81"
NMSPC- N 406685.8
E 765298.5
(NAD-83)

PROPOSED BOTTOM
HOLE LOCATION
Lat - N 32°05'42.81"
Long - W 103°36'36.20"
NMSPC- N 399131.2
E 765315.1
(NAD-83)

OPERATOR CERTIFICATION

I hereby certify that the information contained herein is true and complete to the best of my knowledge and belief, and that this organization either owns a working interest or unleased mineral interest in the land including the proposed bottom hole location or has a right to drill this well at this location pursuant to a contract with an owner of such a mineral or working interest, or to a voluntary pooling agreement or a compulsory pooling order heretofore entered by the division.

Stan Wagner 3/28/17
Signature Date

Stan Wagner
Printed Name

Email Address

SURVEYOR CERTIFICATION

I hereby certify that the well location shown on this plat was plotted from field notes of actual surveys made by me or under my supervision and that the same is true and correct to the best of my belief.

SEPTEMBER 25, 2013

Date Surveyed
Signature & Seal of
Professional Surveyor

Certificate Copy
BASIC SURVEY 7977

0' 1000' 2000' 3000' 4000'
SCALE: 1" = 2000'
WO Num.: 28954