

District I  
1625 N. French Dr., Hobbs, NM 88240  
Phone: (505) 393-6161 Fax: (505) 393-0720  
District II  
111 S. First St., Artesia, NM 88210  
Phone: (505) 748-1283 Fax: (505) 748-9720  
District III  
1000 Rio Bravo Road, Artec, NM 87410  
Phone: (505) 334-6178 Fax: (505) 334-6170  
District IV  
1220 S. St. Francis Dr., Santa Fe, NM 87505  
Phone: (505) 476-3460 Fax: (505) 476-3462

State of New Mexico  
Energy, Minerals & Natural Resources Department  
OIL CONSERVATION DIVISION  
1220 South St. Francis Dr.  
Santa Fe, NM 87505

Form C-102  
Revised August 1, 2011  
Submit one copy to appropriate  
District Office

☐ AMENDED REPORT

WELL LOCATION AND ACREAGE DEDICATION PLAT

API Number 30-025-43633	Pool Code 98033	Pool Name WC-025 G-10 S2133280; WOLFCAMP
Property Code 316337	Property Name DAGGER STATE COM	Well Number 702H V
OGRID No. 785	Operator Name AMTEX ENERGY, INC.	Elevation 3791.5'

Surface Location

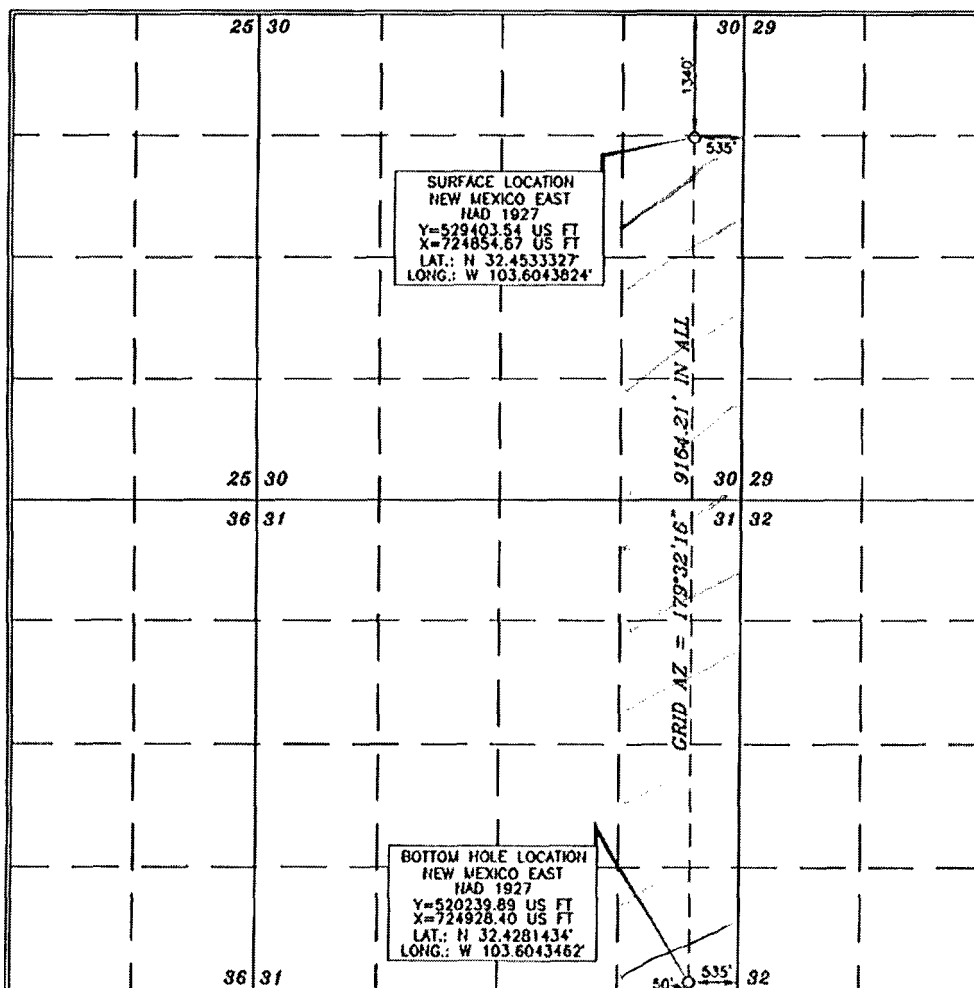
UL or lot no.	Section	Township	Range	Lot Idn	Feet from the	North/South line	Feet from the	East/West line	County
H	30	21 SOUTH	33 EAST, N.M.P.M.		1340'	NORTH	535'	EAST	LEA

Bottom Hole Location If Different From Surface

UL or lot no.	Section	Township	Range	Lot Idn	Feet from the	North/South line	Feet from the	East/West line	County
P	31	21 SOUTH	33 EAST, N.M.P.M.		50'	SOUTH	535'	EAST	LEA

Dedicated Acres 280.00	Joint or Infill	Consolidation Code	Order No.
---------------------------	-----------------	--------------------	-----------

No allowable will be assigned to this completion until all interests have been consolidated or a non-standard unit has been approved by the division.



**OPERATOR CERTIFICATION**

I hereby certify that the information contained herein is true and complete to the best of my knowledge and belief, and that this organization either owns a working interest or undivided mineral interest in the land including the proposed bottom hole location or has a right to drill this well at this location pursuant to a contract with an owner of such a mineral or working interest, or to a voluntary pooling agreement or a compulsory pooling order.

Accepted and entered by the division:

*William J. Savage, 2/2/17*  
Signature \_\_\_\_\_ Date \_\_\_\_\_  
William J. Savage, President  
Printed Name \_\_\_\_\_  
bsavage@amtexresources.com  
E-mail Address \_\_\_\_\_

**SURVEYOR CERTIFICATION**

I hereby certify that the well location shown on this plat was plotted from field notes of actual surveys made by me or under my supervision, and that the same is true and correct to the best of my belief.

*Terry J. Asch*  
Signature and Seal of Professional Surveyor \_\_\_\_\_  
Date of Survey \_\_\_\_\_  
Certificate Number 15079

WOF 160603WL-c (Rev. A) (KA)