

DISTRICT I
1825 N. French Dr., Hobbs, NM 88240
Phone (575) 393-6181 Fax: (575) 393-0720

DISTRICT II
811 S. First St., Artesia, NM 88210
Phone (575) 746-1285 Fax: (575) 746-9720

DISTRICT III
1000 Rio Brazos Rd., Aztec, NM 87410
Phone (505) 334-6176 Fax: (505) 334-6170

DISTRICT IV
1225 S. St. Francis Dr., Santa Fe, NM 87505
Phone (505) 476-3480 Fax: (505) 476-3482

State of New Mexico
Energy, Minerals and Natural Resources Department

Form C-102
Revised August 1, 2011

Submit one copy to appropriate
District Office

OIL CONSERVATION DIVISION
1225 South St. Francis Dr.
Santa Fe, New Mexico 87505

WELL LOCATION AND ACREAGE DEDICATION PLAT

☐ AMENDED REPORT

API Number 30-025-43117	Pool Code WC-98187	Pool Name WC-025 S-09 S253502D Wildcat; Upper Wolfacmp
Property Code 317629	Property Name COUNTY FAIR BTY STATE	Well Number 1H
OGRID No. 372031	Operator Name OneEnergy Partners Operating, LLC	Elevation 3254'

Surface Location

UL or lot No.	Section	Township	Range	Lot Idn	Feet from the	North/South line	Feet from the	East/West line	County
Lot 4	2	25 S	35 E		200	NORTH	400	WEST	LEA

Bottom Hole Location If Different From Surface

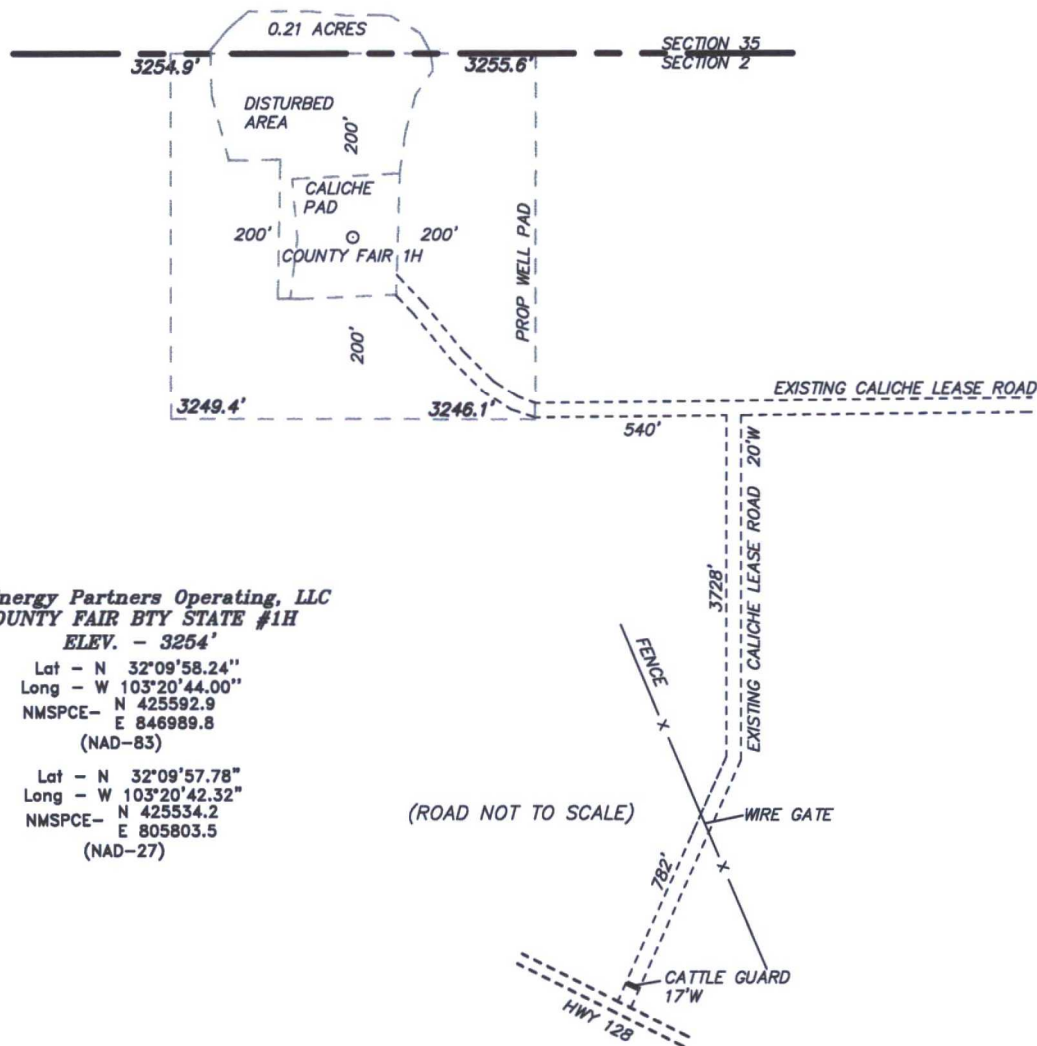
UL or lot No.	Section	Township	Range	Lot Idn	Feet from the	North/South line	Feet from the	East/West line	County
M	2	25 S	35 E		330	SOUTH	400	WEST	LEA

Dedicated Acres	Joint or Infill	Consolidation Code	Order No.
160			

**NO ALLOWABLE WILL BE ASSIGNED TO THIS COMPLETION UNTIL ALL INTERESTS HAVE BEEN CONSOLIDATED
OR A NON-STANDARD UNIT HAS BEEN APPROVED BY THE DIVISION**

	SURFACE LOCATION Lat - N 32°09'58.24" Long - W 103°20'44.00" NMSPCE- N 425592.9 E 846989.8 (NAD-83) Lat - N 32°09'57.78" Long - W 103°20'42.32" NMSPCE- N 425534.2 E 805803.5 (NAD-83)	N.: 425636.8 E.: 851867.8 (NAD 83)	OPERATOR CERTIFICATION I hereby certify that the information contained herein is true and complete to the best of my knowledge and belief, and that this organization either owns a working interest or undivided mineral interest in the land including the proposed bottom hole location or has a right to drill this well at this location pursuant to a contract with an owner of such a mineral or working interest, or to a voluntary pooling agreement or a compulsory pooling order heretofore entered by the division. Signature Date 4/13/2017 Printed Name jlierly@oneenergypartners.com Email Address	
	PENETRATION POINT 677' FNL & 400' FWL Lat - N 32°09'53.51" Long - W 103°20'44.00" NMSPCE- N 425115.7 E 846994.4 (NAD-83) Lat - N 32°09'53.06" Long - W 103°20'42.32" NMSPCE- N 425057.0 E 805808.0 (NAD-27)	N.: 420541.1 E.: 851931.0 (NAD 83)		SURVEYOR CERTIFICATION I hereby certify that the well location shown on this plat was plotted from field notes of actual surveys made by me or under my supervision, and that the same is true and correct to the best of my belief. Date Surveyed Signature & Seal of Professional Surveyor Certificate No. 7977 State of New Mexico Gary L. Lopes Professional Surveyor Scale: 1" = 1000' WO Num.: 32813
	PROPOSED BOTTOM HOLE LOCATION Lat - N 32°09'11.34" Long - W 103°20'44.44" NMSPCE- N 420853.2 E 846995.6 (NAD-83) Lat - N 32°09'10.88" Long - W 103°20'42.76" NMSPCE- N 420794.7 E 805809.1 (NAD-27)	N.: 420541.1 E.: 851931.0 (NAD 83)		
	PRODUCING ZONE DEDICATED ACREAGE			

SECTION 2, TOWNSHIP 25 SOUTH, RANGE 35 EAST. N.M.P.M.,
LEA COUNTY, NEW MEXICO.



OneEnergy Partners Operating, LLC
COUNTY FAIR BTY STATE #1H
ELEV. - 3254'

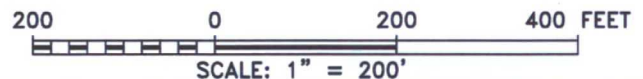
Lat - N 32°09'58.24"
Long - W 103°20'44.00"
NMSPCE - N 425592.9
E 846989.8
(NAD-83)

Lat - N 32°09'57.78"
Long - W 103°20'42.32"
NMSPCE - N 425534.2
E 805803.5
(NAD-27)

Directions to Location:

FROM HWY 128 0.9 MILES FROM MILE MARKER 42
GO NORTH 4342.0 FEET THEN WEST 540.0 FEET TO
LOCATION.

JAL, NM IS ±9 MILES TO THE SOUTHEAST OF LOCATION.



OneEnergy Partners Operating, LLC

REF: COUNTY FAIR BTY STATE #1H / WELL PAD TOPO

THE COUNTY FAIR BTY STATE #1H LOCATED 200' FROM
THE NORTH LINE AND 400' FROM THE WEST LINE OF
SECTION 2, TOWNSHIP 25 SOUTH, RANGE 35 EAST.

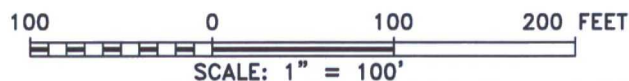
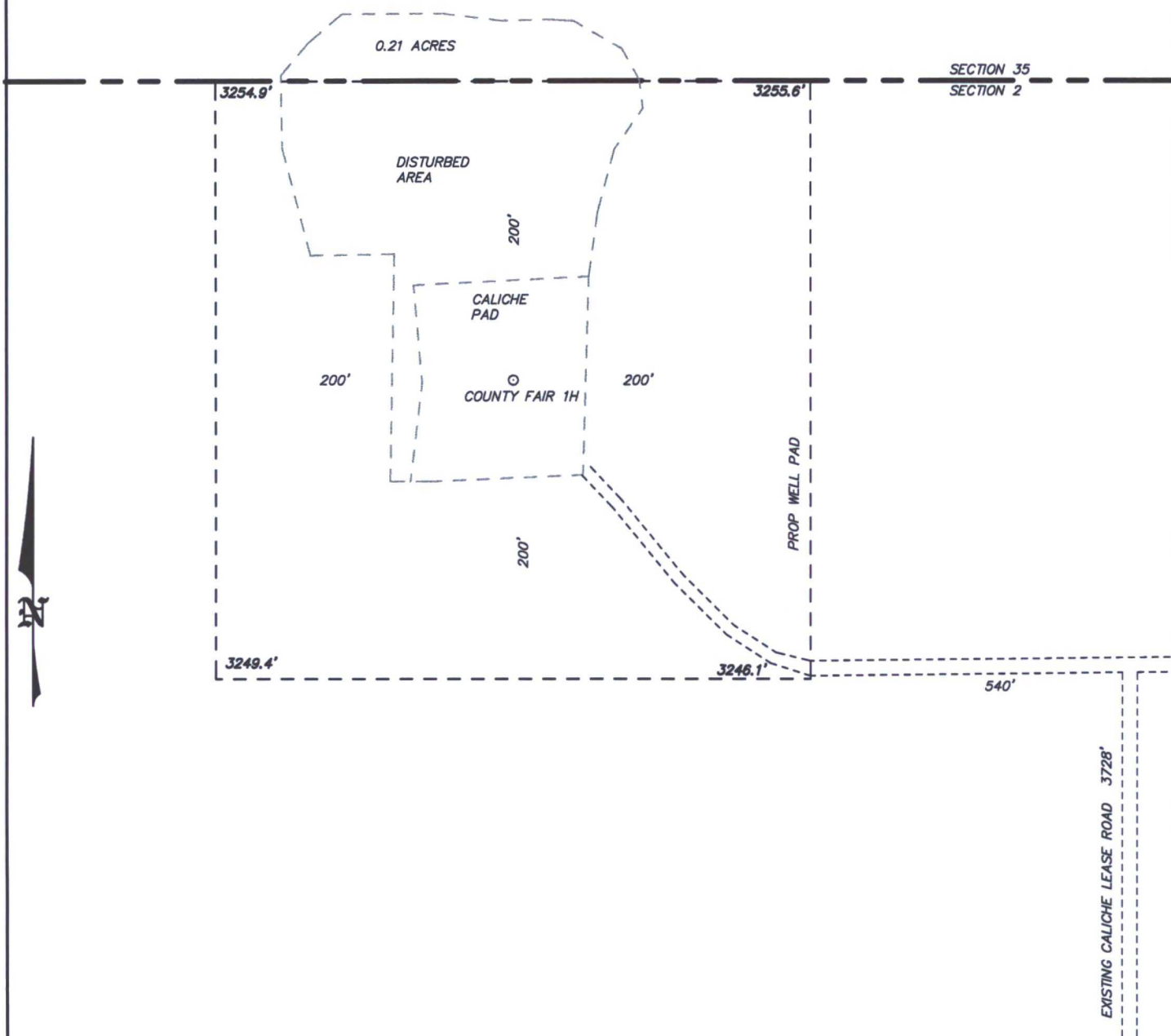
N.M.P.M., LEA COUNTY, NEW MEXICO.



P.O. Box 1786 (575) 393-7316 - Office
1120 N. West County Rd. (575) 392-2206 - Fax
Hobbs, New Mexico 88241 basin-surveys.com

W.O. Number: 32813 Drawn By: J GOAD Date: 3-28-2017 Survey Date: 3-23-2017 Sheet 1 of 1 Sheets

SECTION 2, TOWNSHIP 25 SOUTH, RANGE 35 EAST. N.M.P.M.,
LEA COUNTY, NEW MEXICO.



OneEnergy Partners Operating, LLC

REF: COUNTY FAIR BTY STATE #1H / WELL PAD TOPO

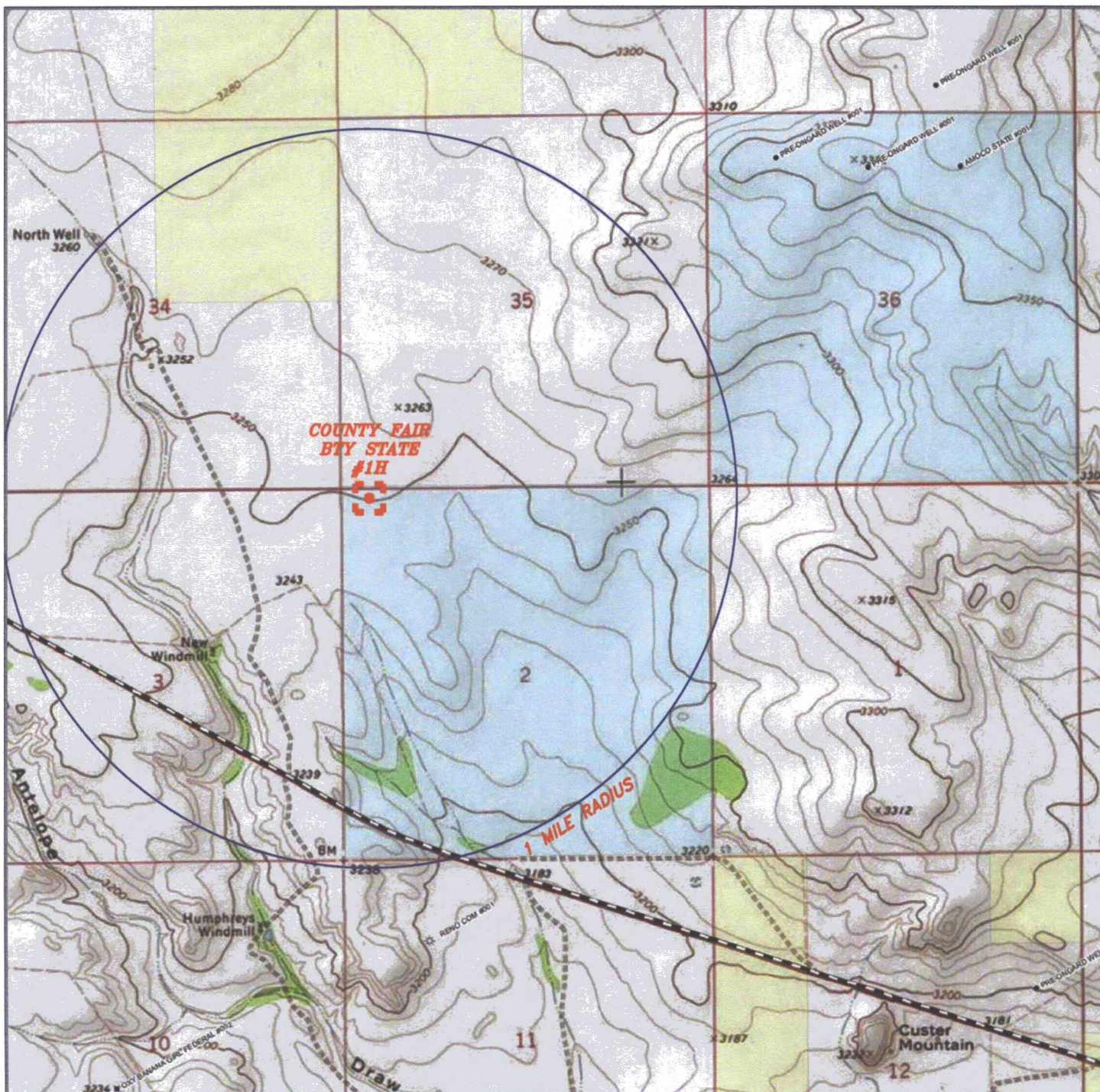
THE COUNTY FAIR BTY STATE #1H LOCATED 200' FROM
THE NORTH LINE AND 400' FROM THE WEST LINE OF
SECTION 2, TOWNSHIP 25 SOUTH, RANGE 35 EAST.

N.M.P.M., LEA COUNTY, NEW MEXICO.

basin
surveys
focused on excellence
in the oilfield

P.O. Box 1786 (575) 393-7316 - Office
1120 N. West County Rd. (575) 392-2206 - Fax
Hobbs, New Mexico 88241 basin-surveys.com

W.O. Number: 32813 | Drawn By: J GOAD | Date: 3-28-2017 | Survey Date: 3-23-2017 | Sheet 1 of 1 Sheets



COUNTY FAIR BTY STATE #1H

Located 200' FNL and 400' FWL
 Section 2, Township 25 South, Range 35 East,
 N.M.P.M., LEA County, New Mexico.

basin
surveys
 focused on excellence
 in the oilfield

P.O. Box 1786
 1120 N. West County Rd.
 Hobbs, New Mexico 88241
 (575) 393-7316 - Office
 (575) 392-2206 - Fax
 basinsurveys.com

0' 1000' 2000' 3000' 4000'
 SCALE: 1" = 2000'

W.O. Number: JG 32813

Survey Date: 3-23-2017

YELLOW TINT - USA LAND
 BLUE TINT - STATE LAND
 NATURAL COLOR - FEE LAND



OneEnergy
 Partners
 Operating, LLC

T24S
R35E

34

35

36

COUNTY FAIR
BTY STATE
#1H



1

2

3

1 MILE RADIUS

T25S
R35E

40

41

42

STATE 170

COUNTY FAIR BTY STATE #1H

Located 200' FNL and 400' FWL
Section 2, Township 25 South, Range 35 East,
N.M.P.M., LEA County, New Mexico.



P.O. Box 1786
1120 N. West County Rd.
Hobbs, New Mexico 88241
(575) 393-7316 - Office
(575) 392-2206 - Fax
basinsurveys.com

0' 1000' 2000' 3000' 4000'

SCALE: 1" = 2000'

W.O. Number: JG 32813

Survey Date: 3-23-2017

YELLOW TINT - USA LAND

BLUE TINT - STATE LAND

NATURAL COLOR - FEE LAND



OneEnergy
Partners
Operating, LLC