

DISTRICT I
1625 N. French Dr., Hobbs, NM 88240
Phone (505) 393-6161 Fax: (505) 393-0720

DISTRICT II
811 S. First St., Artesia, NM 88210
Phone (505) 748-1223 Fax: (505) 748-9720

DISTRICT III
1000 Rio Brazos Rd., Aztec, NM 87410
Phone (505) 334-6178 Fax: (505) 334-6170

DISTRICT IV
1220 S. St. Francis Dr., Santa Fe, NM 87505
Phone (505) 478-3460 Fax: (505) 478-3462

State of New Mexico
Energy, Minerals and Natural Resources Department

Form C-102
Revised August 13, 2011

Submit one copy to appropriate
District Office

OIL CONSERVATION DIVISION
1220 South St. Francis Dr.
Santa Fe, New Mexico 87505

RECEIVED
MAY 16 2017

WELL LOCATION AND ACREAGE DEDICATION PLAT

☐ AMENDED REPORT

API Number 30-025	Pool Code 41540	Pool Name LUSK DELAWARE WEST
Property Code 315243	Property Name LUSK FEDERAL A	Well Number 8-X
OGRID No. 20595	Operator Name SHACKELFORD OIL CO.	Elevation 3592'

Surface Location

UL or lot No.	Section	Township	Range	Lot Idn	FEET from the	SOUTH/South line	FEET from the	East/EAST line	County
H	20	19 S	32 E		1650	NORTH	330	EAST	LEA

Bottom Hole Location If Different From Surface

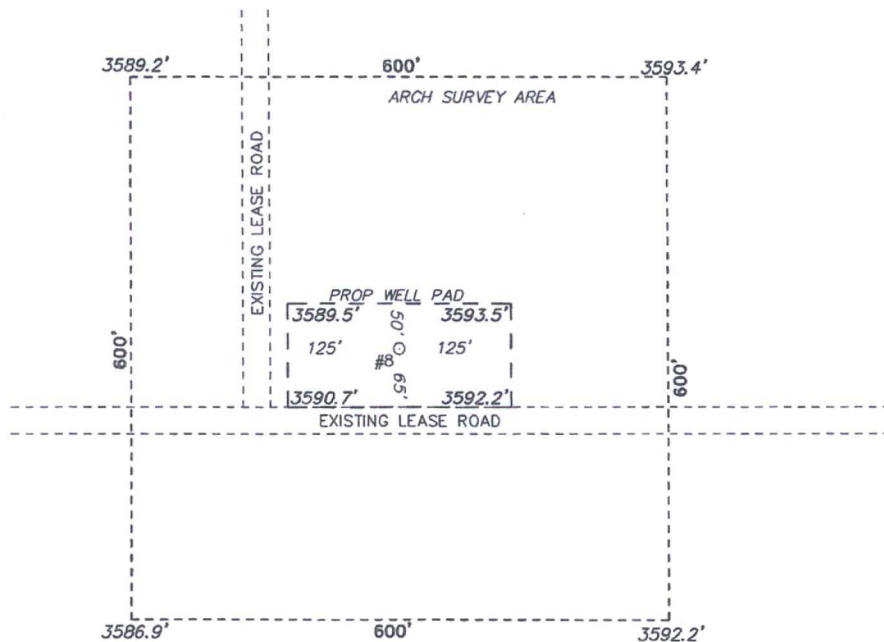
UL or lot No.	Section	Township	Range	Lot Idn	FEET from the	SOUTH/South line	FEET from the	East/EAST line	County

Dedicated Acres 40	Joint or Infill	Consolidation Code	Order No.
------------------------------	-----------------	--------------------	-----------

NO ALLOWABLE WILL BE ASSIGNED TO THIS COMPLETION UNTIL ALL INTERESTS HAVE BEEN CONSOLIDATED
OR A NON-STANDARD UNIT HAS BEEN APPROVED BY THE DIVISION

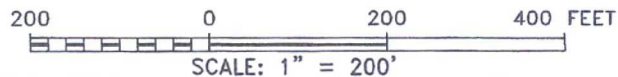
N: 601788.3 E: 706415.1 NAD 83	N: 601803.8 E: 709056.6 NAD 83	N: 601808.1 E: 711703.7 NAD 83	<p>OPERATOR CERTIFICATION</p> <p>I hereby certify that the information contained herein is true and complete to the best of my knowledge and belief, and that this organization either owns a working interest or unleased mineral interest in the land including the proposed bottom hole location or has a right to drill this well at this location pursuant to a contract with an owner of such a mineral or working interest, or to a voluntary pooling agreement or a compulsory pooling order heretofore entered by the division.</p> <p><i>[Signature]</i> 1/30/17 Signature Date Don Shackelford Printed Name d-shackelford@swbell.net Email Address</p>
<p>SURFACE LOCATION</p> <p>Lat - N 32°38'55.18" Long - W 103°46'51.05" NMSPCE- N 600156.2 E 711385.7 (NAD-83)</p>			
<p>SURVEYOR CERTIFICATION</p> <p>I hereby certify that the well location shown on this plat was plotted from field notes of actual surveys made by me or under my supervision, and that the same is true and correct to the best of my belief.</p> <p>JANUARY 26 2017 Date Surveyed Signature & Seal of Professional Surveyor Certificate No. Gary L. Jones 7977 BASIN SERVICES</p>			<p>3589.2' 3593.4' 3586.9' 3592.2'</p>
N: 596509.7 E: 706451.4 NAD 83	N: 596525.4 E: 711741.6 NAD 83		<p>0' 500' 1000' 1500' 2000'</p> <p>SCALE: 1" = 1000'</p> <p>WO Num.: 32673</p>

SECTION 20, TOWNSHIP 19 SOUTH, RANGE 32 EAST, N.M.P.M.,
LEA COUNTY, NEW MEXICO.



SHACKELFORD OIL CO.
LUSK FEDERAL #8-A
ELEV. - 3592'
Lat - N 32°38'55.18"
Long - W 103°46'51.05"
NMSPCE- N 600156.2
E 711385.7
(NAD-83)

HOBBS, NM IS ±38 MILES TO THE EAST OF LOCATION.



Directions to Location:

FROM INTERSECTION OF CR 126 AND DRY LAKE
ROAD GO EAST ON LEASE ROAD 0.7 MILES, THEN
SOUTH 0.7 MILES TO TEE IN ROAD, LOCATION ON
THE EAST.

basin
surveys
focused on excellence
in the oilfield

P.O. Box 1786 (575) 393-7316 - Office
1120 N. West County Rd. (575) 392-2205 - Fax
Hobbs, New Mexico 88241 basin-surveys.com

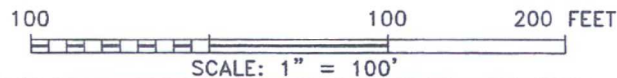
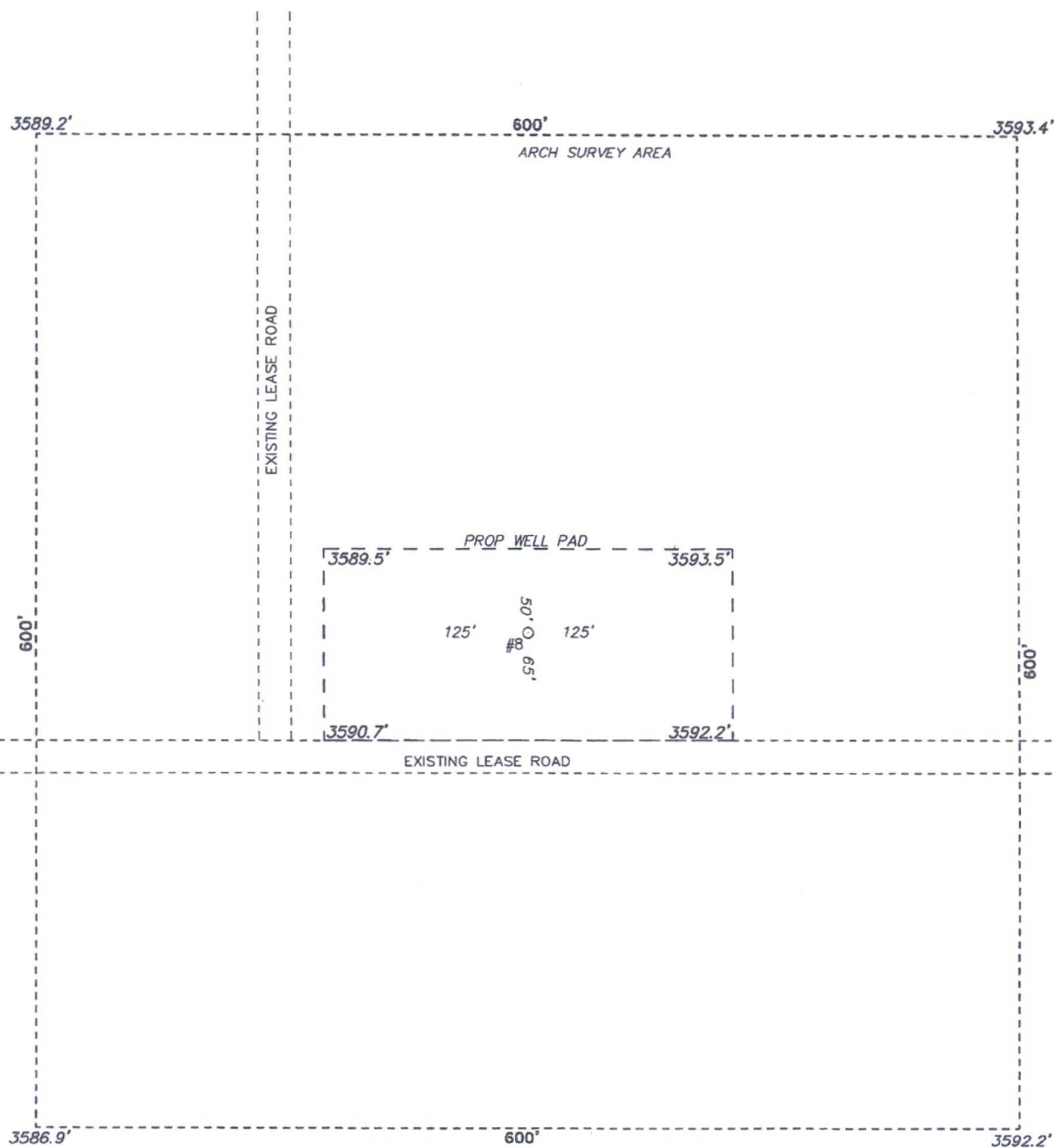
SHACKELFORD OIL CO.

REF: LUSK FEDERAL #8-A / WELL PAD TOPO

THE LUSK FEDERAL #8-A LOCATED 1650' FROM
THE NORTH LINE AND 330' FROM THE EAST LINE OF
SECTION 20, TOWNSHIP 19 SOUTH, RANGE 32 EAST,
N.M.P.M., LEA COUNTY, NEW MEXICO.

W.O. Number: 32673 Drawn By: J GOAD Date: 1-26-2017 Survey Date: 1-25-2017 Sheet 1 of 1 Sheets

SECTION 20, TOWNSHIP 19 SOUTH, RANGE 32 EAST, N.M.P.M.,
LEA COUNTY, NEW MEXICO.



SHACKELFORD OIL CO.

REF: LUSK FEDERAL #8-A / WELL PAD TOPO

THE LUSK FEDERAL #8-A LOCATED 1650' FROM
THE NORTH LINE AND 330' FROM THE EAST LINE OF
SECTION 20, TOWNSHIP 19 SOUTH, RANGE 32 EAST,
N.M.P.M., LEA COUNTY, NEW MEXICO.

basin
surveys
focused on excellence
in the oilfield

P.O. Box 1786
1120 N. West County Rd.
Hobbs, New Mexico 88241
(575) 393-7316 - Office
(575) 392-2206 - Fax
basinsurveys.com

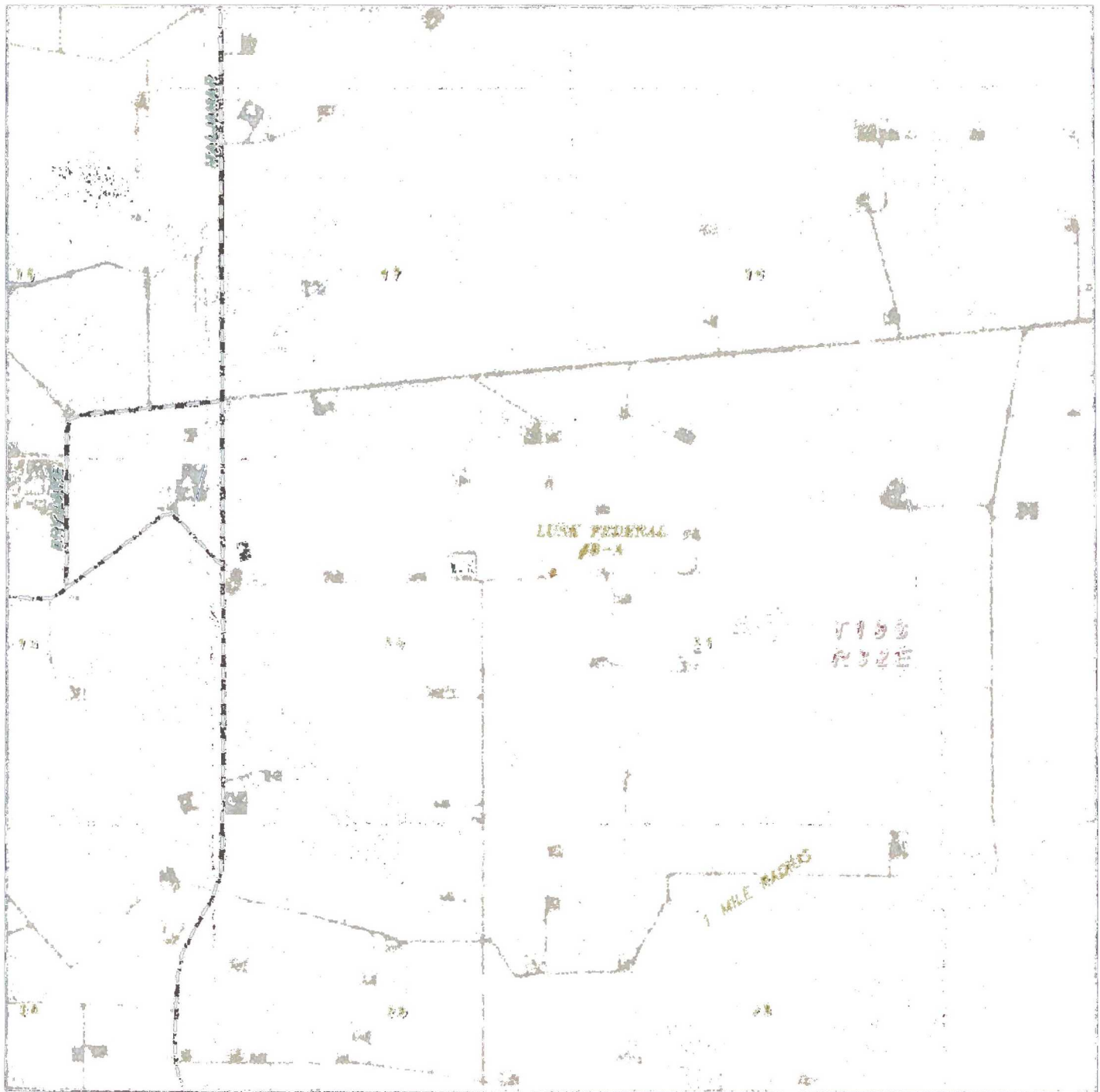
W.O. Number: 32673

Drawn By: J GOAD

Date: 1-26-2017

Survey Date: 1-25-2017

Sheet 1 of 1 Sheets



LUSK FEDERAL #8-A

Located 1650' FNL and 330' FEL
 Section 20, Township 19 South, Range 32 East,
 N.M.P.M., Lea County, New Mexico.



focused on excellence
 in the oilfield

P.O. Box 1786
 1120 N. West County Rd.
 Hobbs, New Mexico 88241
 (575) 393-7316 - Office
 (575) 392-2206 - Fax
basinsurveys.com

0' 1000' 2000' 3000' 4000'

SCALE: 1" = 2000'

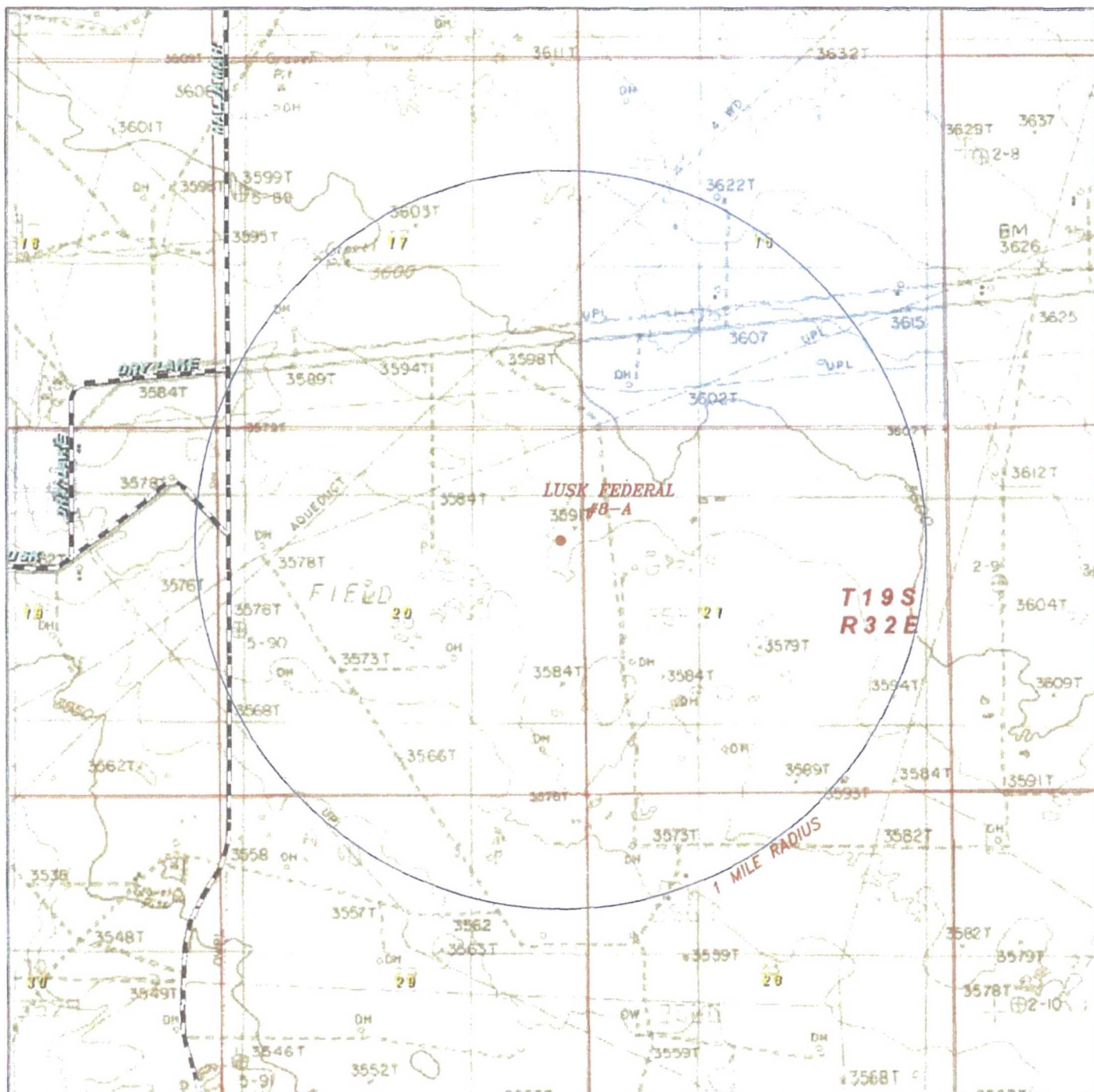
W.O. Number: JG 32673

Survey Date: 1-25-2017

YELLOW TINT - USA LAND
 BLUE TINT - STATE LAND
 NATURAL COLOR - FEE LAND



**SHACKELFORD
 OIL CO.**



LUSK FEDERAL #8-A

Located 1650' FNL and 330' FEL
 Section 20, Township 19 South, Range 32 East,
 N.M.P.M., Lea County, New Mexico.



P.O. Box 1756
 1120 N. West County Rd.
 Hobbs, New Mexico 88241
 (575) 393-7316 - Office
 (575) 392-2206 - Fax
basinsurveys.com

0' 1000' 2000' 3000' 4000'
 SCALE: 1" = 2000'

W.O. Number: JC 32673

Survey Date: 1-25-2017

YELLOW TINT - USA LAND
 BLUE TINT - STATE LAND
 NATURAL COLOR - FEE LAND



**SHACKELFORD
 OIL CO.**

