

District I
1625 N. French Dr., Hobbs, NM 88240
Phone: (575) 393-6161 Fax: (575) 393-0720
District II
811 S. First St., Artesia, NM 88210
Phone: (575) 748-1283 Fax: (575) 748-9720
District III
1000 Rio Brazos Road, Aztec, NM 87410
Phone: (505) 334-6178 Fax: (505) 334-6170
District IV
1220 S. St. Francis Dr., Santa Fe, NM 87505
Phone: (505) 476-3460 Fax: (505) 476-3462

State of New Mexico
Energy, Minerals & Natural Resources
Department
OIL CONSERVATION DIVISION
1220 South St. Francis Dr.
Santa Fe, NM 87505

FORM C-102

Revised August 1, 2011

Submit one copy to appropriate

District Office

☐ AMENDED REPORT

WELL LOCATION AND ACREAGE DEDICATION PLAT

¹ API Number 30-025-43500	² Pool Code 5535	³ Pool Name Berry; Bone Spring, North
⁴ Property Code 317156	⁵ Property Name PERSIMMON 24 STATE COM	
⁷ OGRID No. 7377	⁸ Operator Name EOG RESOURCES, INC.	⁶ Well Number 201 H ⁹ Elevation 3757'

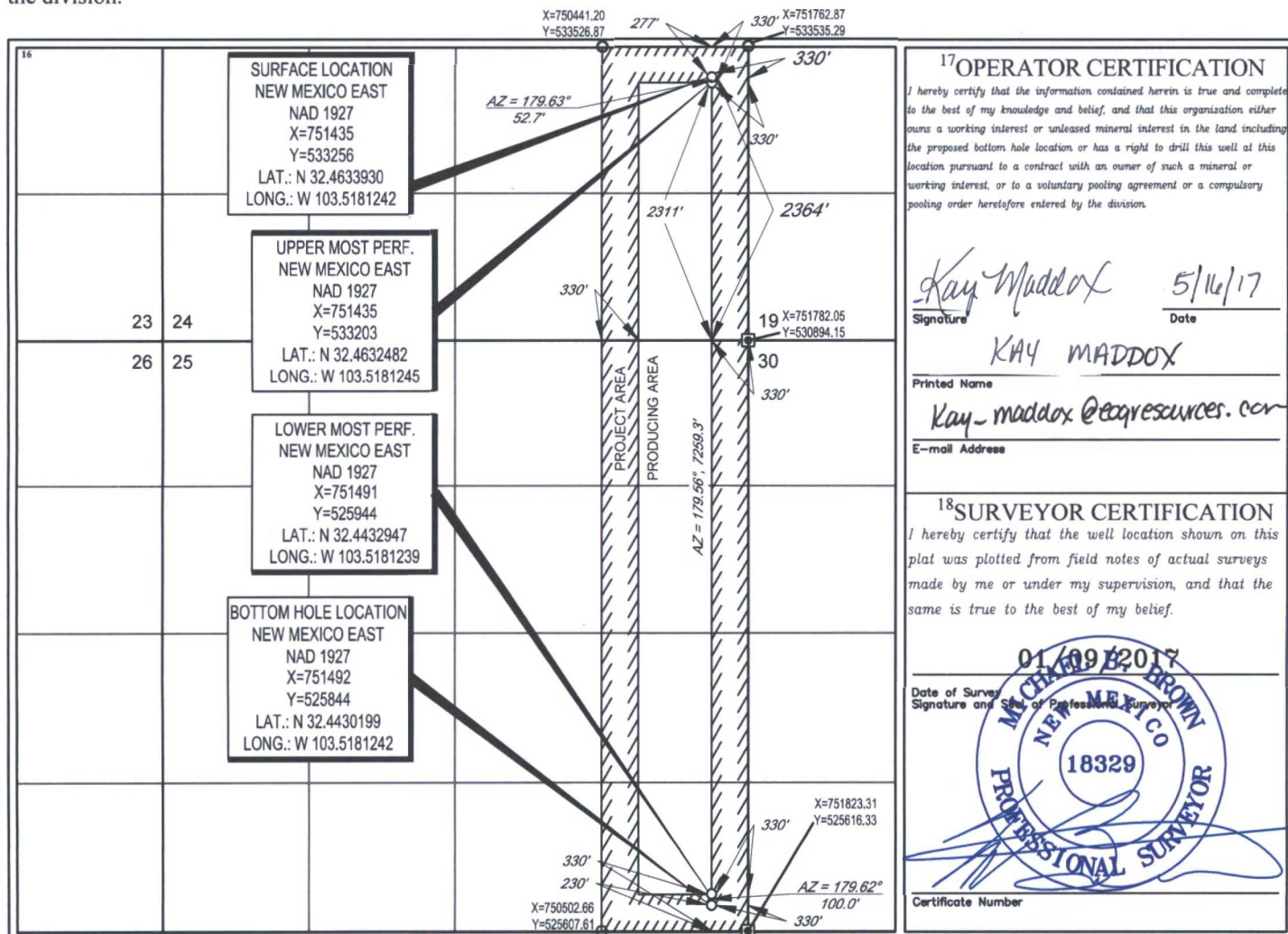
¹⁰Surface Location

UL or lot no.	Section	Township	Range	Lot Idn	Feet from the	North/South line	Feet from the	East/West line	County
I	24	21-S	33-E	-	2364'	SOUTH	330'	EAST	LEA

UL or lot no.	Section	Township	Range	Lot Idn	Feet from the	North/South line	Feet from the	East/West line	County
P	25	21-S	33-E	-	205	SOUTH	341	EAST	LEA

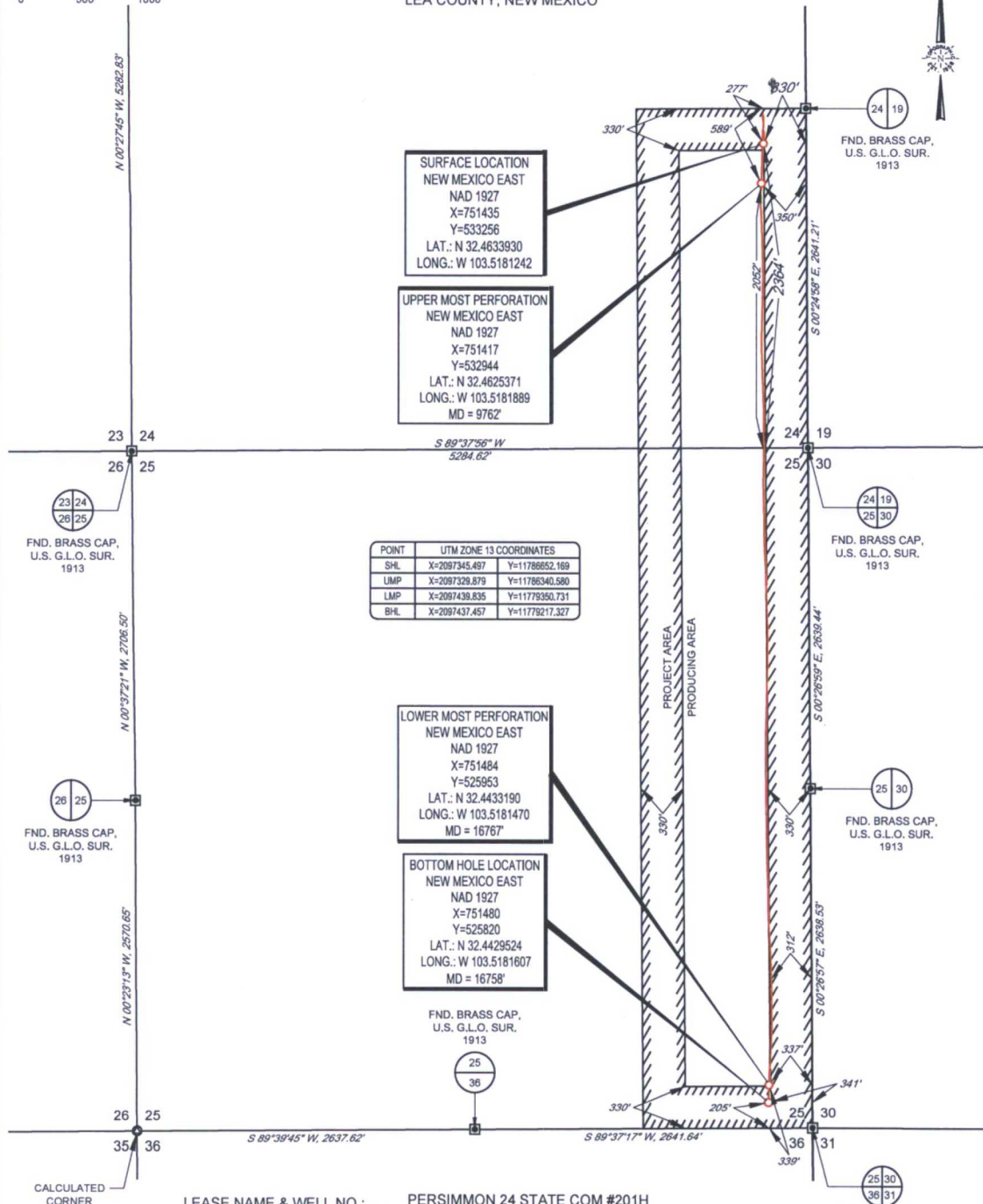
¹² Dedicated Acres 240.00	¹³ Joint or Infill	¹⁴ Consolidation Code	¹⁵ Order No.
---	-------------------------------	----------------------------------	-------------------------

No allowable will be assigned to this completion until all interests have been consolidated or a non-standard unit has been approved by the division.



SCALE: 1" = 1000'

SECTIONS 24 & 25, TOWNSHIP 21-S, RANGE 33-E, N.M.P.M.
LEA COUNTY, NEW MEXICO



POINT	UTM ZONE 13 COORDINATES
SHL	X=2097345.487 Y=1178652.189
LMP	X=2097329.879 Y=11786340.580
LMP	X=2097439.835 Y=11779350.731
BHL	X=2097437.457 Y=11779217.327

LEASE NAME & WELL NO.: PERSIMMON 24 STATE COM #201H
 SECTION 24 TWP 21-S RGE 33-E SURVEY N.M.P.M.
 COUNTY LEA STATE NM ELEVATION 3757'
 DESCRIPTION 2364' FSL & 330' FEL



1400 EVERMAN PARKWAY, Ste. 197 • FT. WORTH, TEXAS 76140
 TELEPHONE: (817) 744-7512 • FAX: (817) 744-7548
 2903 NORTH BIG SPRING • MIDLAND, TEXAS 79705
 TELEPHONE: (432) 682-1653 OR (800) 767-1653 • FAX: (432) 682-1743
 WWW.TOPOGRAPHIC.COM



Michael Blake Brown, P.S. No. 18329
 APRIL 4, 2017



PERSIMMON 24 STATE COM #201H AS-COMPLETED	REVISION:
DATE: 04/04/17	
FILE:AD_PERSIMMON_24_STATE_COM_201H	
DRAWN BY: A.C.C.	
SHEET: 1 OF 1	

- NOTES:
1. ORIGINAL DOCUMENT SIZE: 8.5" X 14"
 2. ALL BEARINGS, DISTANCES, AND COORDINATE VALUES CONTAINED HEREIN ARE GRID BASED UPON THE NEW MEXICO STATE PLANE COORDINATE SYSTEM, EAST ZONE, U.S. SURVEY FEET, NORTH AMERICAN DATUM 1927.
 3. THIS WELL LOCATION SHOWN HEREON HAS BEEN SURVEYED ON THE GROUND UNDER MY SUPERVISION AND PREPARED ACCORDING TO THE EVIDENCE FOUND AT THE TIME OF SURVEY, AND DATA PROVIDED BY EOG RESOURCES, INC. THIS CERTIFICATION IS MADE AND LIMITED TO THOSE PERSONS OR ENTITIES SHOWN ON THE FACE OF THIS PLAT AND IS NON-TRANSFERABLE. THIS SURVEY IS CERTIFIED FOR THIS TRANSACTION ONLY.