

District I
1625 N. French Dr., Hobbs, NM 88240
Phone: (575) 393-6161 Fax: (575) 393-0720
District II
811 S. First St., Artesia, NM 88210
Phone: (575) 748-1283 Fax: (575) 748-9720
District III
1000 Rio Brazos Road, Aztec, NM 87410
Phone: (505) 334-6178 Fax: (505) 334-6170
District IV
1220 S. St. Francis Dr., Santa Fe, NM 87505
Phone: (505) 476-3460 Fax: (505) 476-3462

State of New Mexico
Energy, Minerals & Natural Resources
Department
OIL CONSERVATION DIVISION
1220 South St. Francis Dr.
Santa Fe, NM 87505

FORM C-102
Revised August 1, 2011
Submit one copy to appropriate
District Office

HOBBS OCD
MAY 18 2017
RECEIVED

AMENDED REPORT

WELL LOCATION AND ACREAGE DEDICATION PLAT

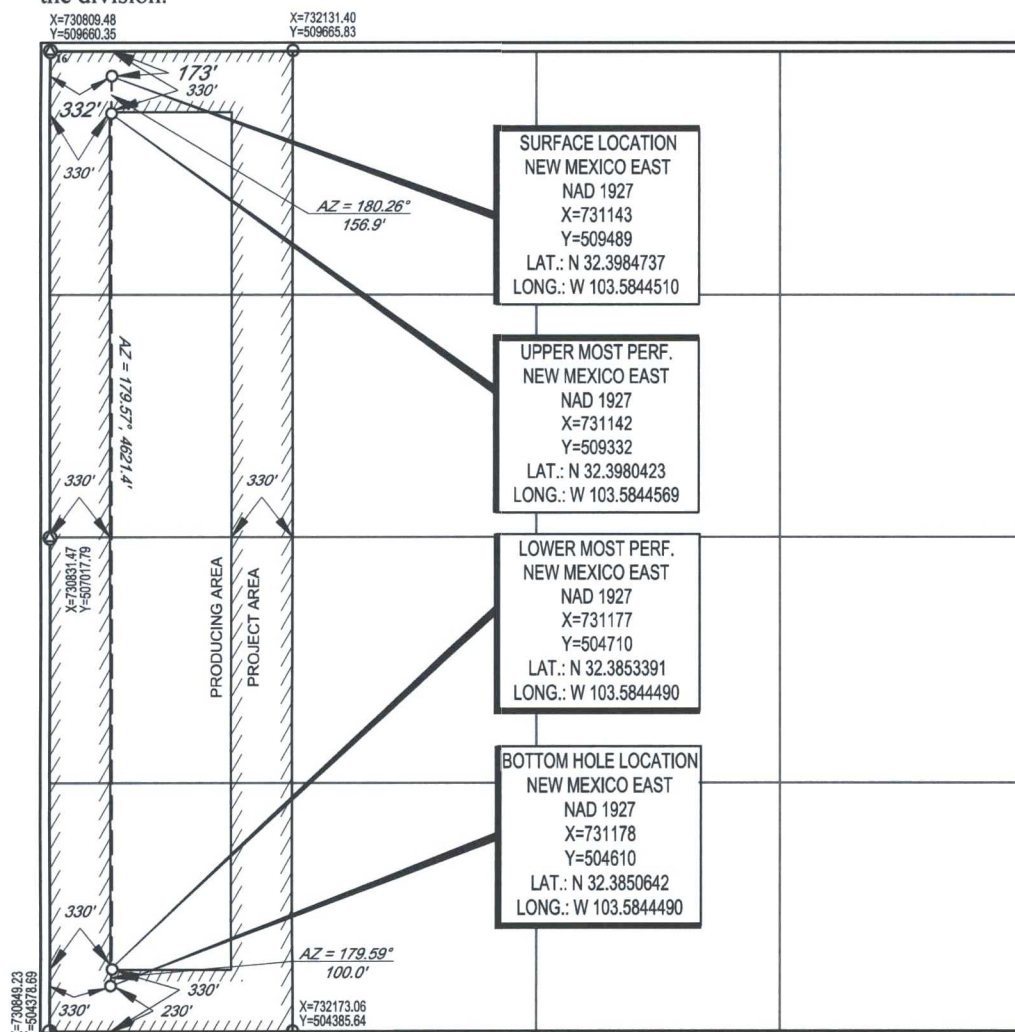
¹ API Number 30-025-43586	² Pool Code 51687	³ Pool Name RED TANK; BONE SPRING, EAST
⁴ Property Code 317388	⁵ Property Name SPEEDY 16 STATE COM	
⁶ Well Number 501H	⁷ Elevation 3582'	
⁸ OGRID No. 7377	⁹ Operator Name EOG RESOURCES, INC.	

¹⁰ Surface Location									
UL or lot no. D	Section 16	Township 22-S	Range 33-E	Lot Idn -	Feet from the 173'	North/South line NORTH	Feet from the 332'	East/West line WEST	County LEA

UL or lot no. M	Section 16	Township 22-S	Range 33-E	Lot Idn -	Feet from the 230'	North/South line SOUTH	Feet from the 323	East/West line WEST	County LEA
--------------------	---------------	------------------	---------------	--------------	-----------------------	---------------------------	----------------------	------------------------	---------------

¹² Dedicated Acres 160.00	¹³ Joint or Infill	¹⁴ Consolidation Code	¹⁵ Order No.
---	-------------------------------	----------------------------------	-------------------------

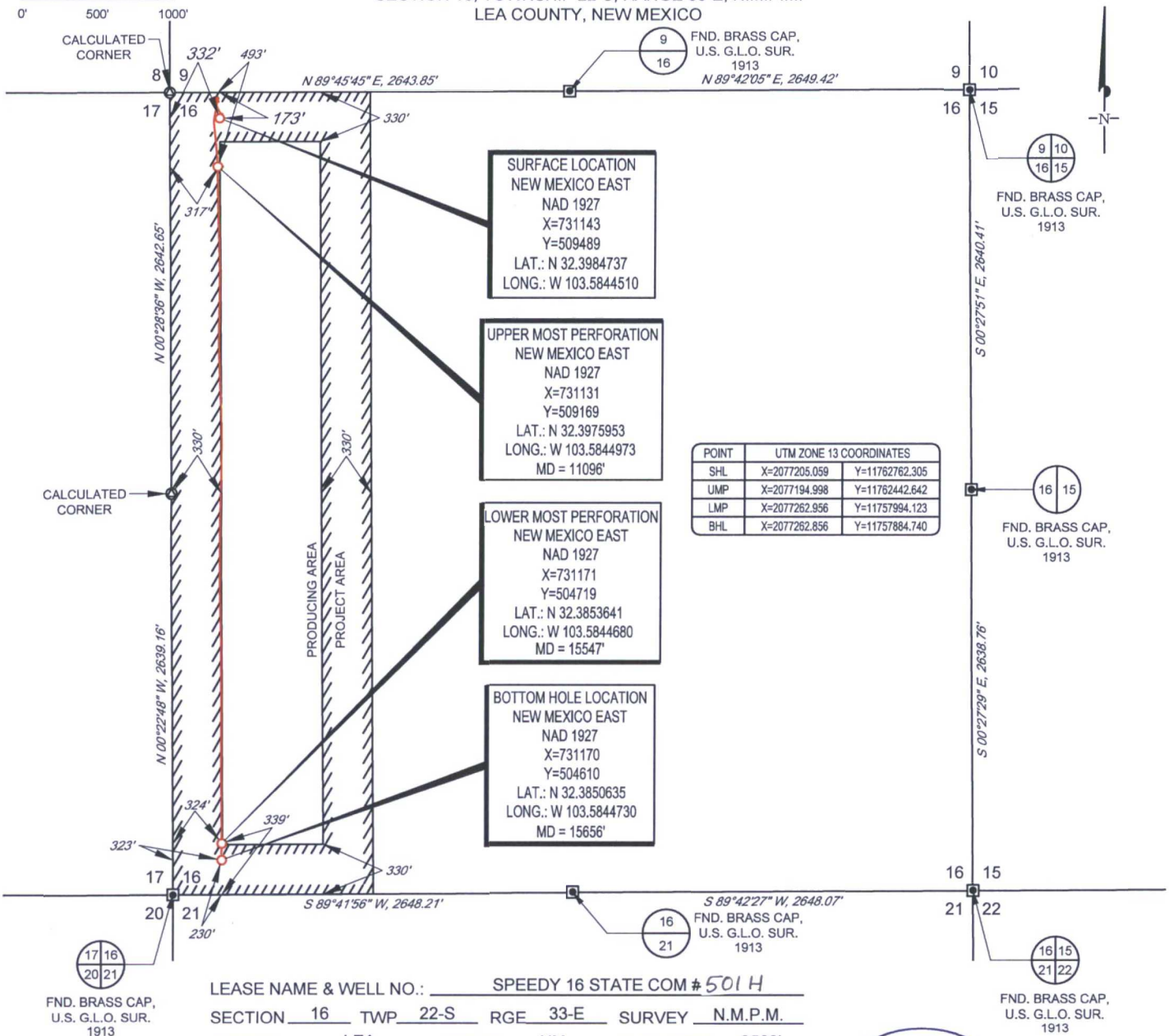
No allowable will be assigned to this completion until all interests have been consolidated or a non-standard unit has been approved by the division.



¹⁷ OPERATOR CERTIFICATION	
I hereby certify that the information contained herein is true and complete to the best of my knowledge and belief, and that this organization either owns a working interest or released mineral interest in the land including the proposed bottom hole location or has a right to drill this well at this location pursuant to a contract with an owner of such a mineral or working interest, or to a voluntary pooling agreement or a compulsory pooling order heretofore entered by the division.	
Signature <i>Kay Maddox</i>	Date 5/16/17
Printed Name KAY MADDOX	
E-mail Address kay-maddox@eqresources.com	
¹⁸ SURVEYOR CERTIFICATION	
I hereby certify that the well location shown on this plat was plotted from field notes of actual surveys made by me or under my supervision, and that the same is true to the best of my belief.	
Date of Survey 12/07/2016	
Signature and Seal of Professional Surveyor <i>Michael Brown</i>	
Certificate Number 18329	

SCALE: 1" = 1000'

SECTION 16, TOWNSHIP 22-S, RANGE 33-E, N.M.P.M.
LEA COUNTY, NEW MEXICO



**SURFACE LOCATION
NEW MEXICO EAST**
NAD 1927
X=731143
Y=509489
LAT.: N 32.3984737
LONG.: W 103.5844510

**UPPER MOST PERFORATION
NEW MEXICO EAST**
NAD 1927
X=731131
Y=509169
LAT.: N 32.3975953
LONG.: W 103.5844973
MD = 11096'

**LOWER MOST PERFORATION
NEW MEXICO EAST**
NAD 1927
X=731171
Y=504719
LAT.: N 32.3853641
LONG.: W 103.5844680
MD = 15547'

**BOTTOM HOLE LOCATION
NEW MEXICO EAST**
NAD 1927
X=731170
Y=504610
LAT.: N 32.3850635
LONG.: W 103.5844730
MD = 15656'

POINT	UTM ZONE 13 COORDINATES	
SHL	X=2077205.059	Y=11762762.305
UMP	X=2077194.998	Y=11762442.642
LMP	X=2077262.956	Y=11757994.123
BHL	X=2077262.856	Y=11757884.740

LEASE NAME & WELL NO.: SPEEDY 16 STATE COM # 501 H
 SECTION 16 TWP 22-S RGE 33-E SURVEY N.M.P.M.
 COUNTY LEA STATE NM ELEVATION 3582'
 DESCRIPTION 173' FNL & 332' FWL



TOPOGRAPHIC
LOYALTY INNOVATION LEGACY

1400 EVERMAN PARKWAY, Ste. 197 • FT. WORTH, TEXAS 76140
 TELEPHONE: (817) 744-7512 • FAX: (817) 744-7548
 2903 NORTH BIG SPRING • MIDLAND, TEXAS 79705
 TELEPHONE: (432) 682-1653 OR (800) 767-1653 • FAX (432) 682-1743
 WWW.TOPOGRAPHIC.COM



Michael Blake Brown, P.S. No. 18329
APRIL 12, 2017



SPEEDY 16 STATE COM
501 H
AS-COMPLETED

DATE: 04/12/17
 FILE: AD_SPEEDY_16_STATE_COM_201H
 DRAWN BY: A.C.C.
 SHEET: 1 OF 1

REVISION:

NOTES:

1. ORIGINAL DOCUMENT SIZE: 8.5" X 11"
2. ALL BEARINGS, DISTANCES, AND COORDINATE VALUES CONTAINED HEREIN ARE GRID BASED UPON THE NEW MEXICO STATE PLANE COORDINATE SYSTEM, EAST ZONE, U.S. SURVEY FEET, NORTH AMERICAN DATUM 19 27.
3. THIS WELL LOCATION SHOWN HEREON HAS BEEN SURVEYED ON THE GROUND UNDER MY SUPERVISION AND PREPARED ACCORDING TO THE EVIDENCE FOUND AT THE TIME OF SURVEY, AND DATA PROVIDED BY EOG RESOURCES, INC. THIS CERTIFICATION IS MADE AND LIMITED TO THOSE PERSONS OR ENTITIES SHOWN ON THE FACE OF THIS PLAT AND IS NON-TRANSFERABLE. THIS SURVEY IS CERTIFIED FOR THIS TRANSACTION ONLY.