

DISTRICT I
1625 N. French Dr., Hobbs, NM 88240

State of New Mexico

Form C-102
Revised August 1, 2011

DISTRICT II
811 South First, Artesia, NM 88210

Energy, Minerals and Natural Resources Department

Submit one copy to Appropriate
District Office

DISTRICT III
1000 Rio Brazos Rd., Aztec, NM 87410

OIL CONSERVATION DIVISION

1229 South St. Francis Dr.

DISTRICT IV
2040 South Pacheco, Santa Fe, NM 87505

Santa Fe, New Mexico 87505

AMENDED REPORT *

HOBBES OCD
MAY 25 2017
RECEIVED

WELL LOCATION AND ACREAGE DEDICATION PLAT

| | | |
|----------------------------|--|---|
| API Number 30-025-43721 | Pool Code 98098 | Pool Name WC-025 G-09 S243532M, WOLFBONE |
| Property Code 317500 | Property Name BRAHMAN STATE 24-35 15 | Well Number 601H |
| GRID No. 162928 | Operator Name ENERGEN RESOURCES CORPORATION | Elevation 3363' |

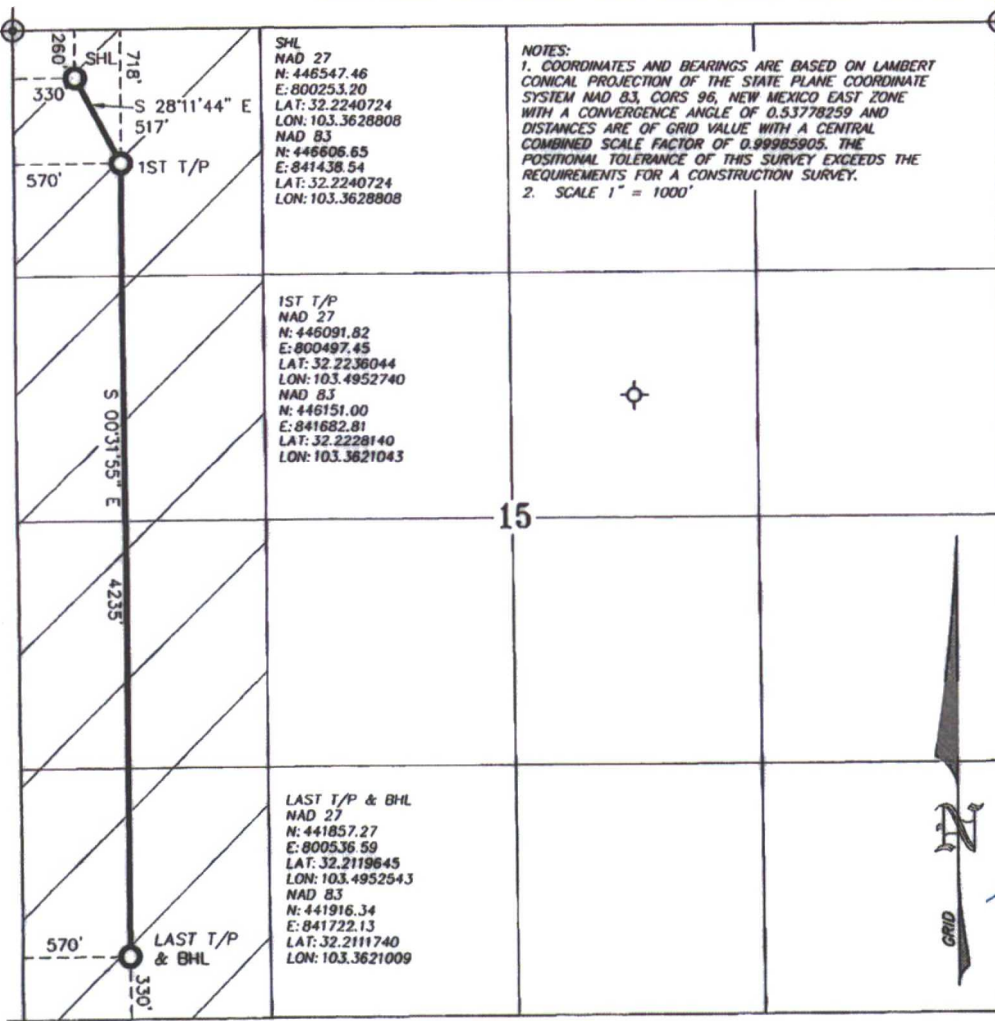
Surface Location

| | | | | | | | | | |
|--------------------|---------------|------------------|---------------|---------|----------------------|---------------------------|----------------------|------------------------|---------------|
| UL or lot No. D | Section 15 | Township 24-S | Range 35-E | Lot Idn | Feet from the 200 | North/South line NORTH | Feet from the 330 | East/West line WEST | County LEA |
|--------------------|---------------|------------------|---------------|---------|----------------------|---------------------------|----------------------|------------------------|---------------|

* Bottom Hole Location If Different From Surface

| | | | | | | | | | |
|------------------------|-----------------|--------------------|---------------|---------|----------------------|---------------------------|----------------------|------------------------|---------------|
| UL or lot No. M | Section 15 | Township 24-S | Range 35-E | Lot Idn | Feet from the 330 | North/South line SOUTH | Feet from the 570 | East/West line WEST | County LEA |
| Dedicated Acres 160 | Joint or Infill | Consolidation Code | Order No. | | | | | | |

NO ALLOWABLE WILL BE ASSIGNED TO THIS COMPLETION UNTIL ALL INTERESTS HAVE BEEN CONSOLIDATED
OR A NON-STANDARD UNIT HAS BEEN APPROVED BY THE DIVISION



OPERATOR CERTIFICATION

I hereby certify that the information contained herein is true and complete to the best of my knowledge and belief, and that this organization either owns a working interest or unleased mineral interest in the land including the proposed bottom hole location or has a right to drill this well at this location pursuant to a contract with an owner of such a mineral or working interest, or to a voluntary pooling agreement or compulsory pooling order heretofore entered by the division.

Brenda F. Rathjen 5/22/17
Signature Date
Brenda F. Rathjen
Printed Name
5/22/17 Energen Resources Corp.
Date

SURVEYOR CERTIFICATION

I hereby certify that the well location shown on this plat was plotted from field notes of actual surveys made by me or under my supervision, and that the same is true and correct to the best of my belief.

MAY 22, 2017

Date Surveyed

Signature & Seal
Professional Surveyor

Certificate No. WILSON D. WATSON JR.
P.L.S. #3959
WATSON PROFESSIONAL GROUP INC