

District I
1625 N. French Dr., Hobbs, NM 88240
Phone: (575) 393-6161 Fax: (575) 393-0720
District II
811 S. First St., Artesia, NM 88210
Phone: (575) 748-1283 Fax: (575) 748-9720
District III
1000 Rio Brazos Road, Aztec, NM 87410
Phone: (505) 334-6178 Fax: (505) 334-6170
District IV
1220 S. St. Francis Dr., Sante Fe, NM 87505
Phone: (505) 476-3460 Fax: (505) 476-3462

State of New Mexico
Energy, Minerals & Natural Resources
Department
OIL CONSERVATION DIVISION
1220 South St. Francis Dr.
Sante Fe, NM 87505

FORM C-102

Revised August 1, 2011

Submit one copy to appropriate

District Office

☐ AMENDED REPORT

WELL LOCATION AND ACREAGE DEDICATION PLAT

¹ API Number 30-025- 43456	² Pool Code 59900	³ Pool Name Triple X; Bone Spring
⁴ Property Code 96674	⁵ Property Name NEPTUNE 10 STATE COM	
⁷ GRID No. 7377	⁸ Operator Name EOG RESOURCES, INC.	⁶ Well Number 505H ⁹ Elevation 3615'

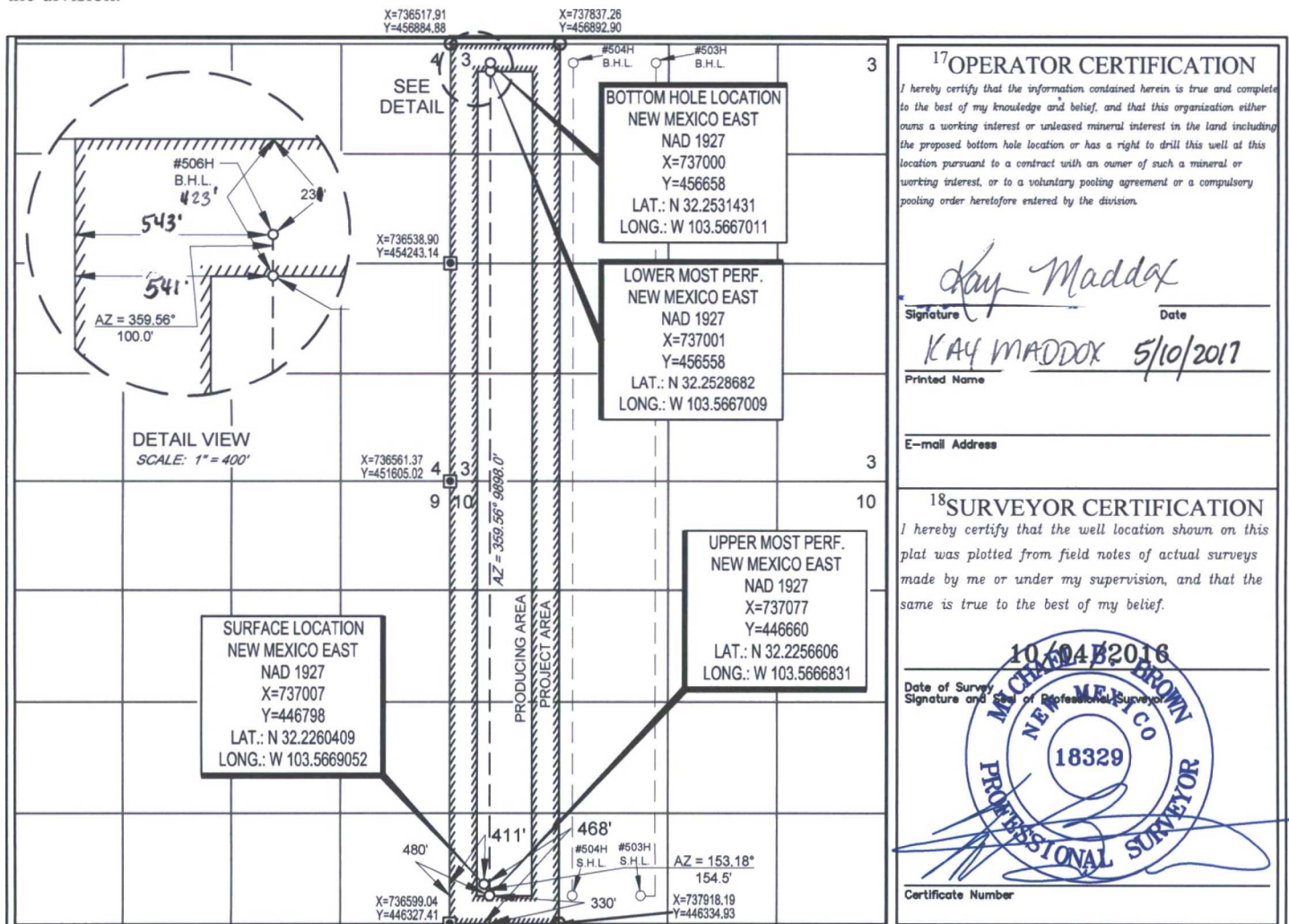
¹⁰Surface Location

UL or lot no.	Section	Township	Range	Lot Idn	Feet from the	North/South line	Feet from the	East/West line	County
M	10	24-S	33-E	-	468'	SOUTH	411'	WEST	LEA

UL or lot no.	Section	Township	Range	Lot Idn	Feet from the	North/South line	Feet from the	East/West line	County
D	3	24-S	33-E	-	231	NORTH	543	WEST	LEA

¹² Dedicated Acres 320.13	¹³ Joint or Infill	¹⁴ Consolidation Code	¹⁵ Order No.
---	-------------------------------	----------------------------------	-------------------------

No allowable will be assigned to this completion until all interests have been consolidated or a non-standard unit has been approved by the division.



SCALE: 1" = 2000'

0' 1000' 2000'

SECTIONS 3 & 10 TOWNSHIP 24-S, RANGE 33-E, N.M.P.M.
LEA COUNTY, NEW MEXICO



BOTTOM HOLE LOCATION
NEW MEXICO EAST
NAD 1927
X=737063
Y=456657
LAT.: N 32.2531402
LONG.: W 103.5664981
MD = 21265'

FND. BRASS CAP,
U.S. G.L.O. SUR.
1913

FND. BRASS CAP,
U.S. G.L.O. SUR.
1913

FND. BRASS CAP,
U.S. G.L.O. SUR.
1913

LEASE NAME & WELL NO.: NEPTUNE 10 STATE COM #505H (SIDETRACK)
SECTION 10 TWP 24-S RGE 33-E SURVEY N.M.P.M.
COUNTY LEA STATE NM ELEVATION 3615'
DESCRIPTION 468' FSL & 411' FWL

FND. BRASS CAP,
U.S. G.L.O. SUR.
1913

POINT	UTM ZONE 13 COORDINATES	
SHL	X=2083458.241	Y=11700118.727
UMP	X=2083513.146	Y=11700211.255
LMP	X=2083453.611	Y=11709784.395
BHL	X=2083452.517	Y=11709976.607

LOWER MOST PERFORATION
NEW MEXICO EAST
NAD 1927
X=737062
Y=456465
LAT.: N 32.2526117
LONG.: W 103.5665029
MD = 21073'

UPPER MOST PERFORATION
NEW MEXICO EAST
NAD 1927
X=737063
Y=446890
LAT.: N 32.2262932
LONG.: W 103.5667237
MD = 11492'

FND. BRASS CAP,
U.S. G.L.O. SUR.
1913

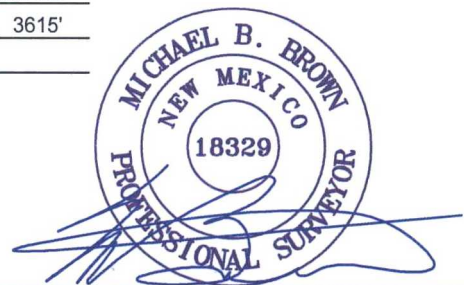
SURFACE LOCATION
NEW MEXICO EAST
NAD 1927
X=737007
Y=446798
LAT.: N 32.2260409
LONG.: W 103.5669052

FND. BRASS CAP,
U.S. G.L.O. SUR.
1913



TOPOGRAPHIC
LOYALTY INNOVATION LEGACY

1400 EVERMAN PARKWAY, Ste. 197 • FT. WORTH, TEXAS 76140
TELEPHONE: (817) 744-7512 • FAX (817) 744-7548
2903 NORTH BIG SPRING • MIDLAND, TEXAS 79705
TELEPHONE: (432) 682-1653 OR (800) 767-1653 • FAX (432) 682-1743
WWW.TOPOGRAPHIC.COM



Michael Blake Brown, P.S. No. 18329
MARCH 23, 2017



NEPTUNE 10 STATE COM
#505H AS-COMPLETED

REVISION:

DATE: 03/23/17

FILE: AD_NEPTUNE10STATECOM_505H_SIDETRACK

DRAWN BY: A.C.C.

SHEET: 1 OF 1

NOTES:

1. ORIGINAL DOCUMENT SIZE: 8.5" X 11"
2. ALL BEARINGS, DISTANCES, AND COORDINATE VALUES CONTAINED HEREIN ARE GRID BASED UPON THE NEW MEXICO STATE PLANE COORDINATE SYSTEM, EAST ZONE, U.S. SURVEY FEET, NORTH AMERICAN DATUM 1927.
3. THIS WELL LOCATION SHOWN HEREON HAS BEEN SURVEYED ON THE GROUND UNDER MY SUPERVISION AND PREPARED ACCORDING TO THE EVIDENCE FOUND AT THE TIME OF SURVEY, AND DATA PROVIDED BY EOG RESOURCES, INC. THIS CERTIFICATION IS MADE AND LIMITED TO THOSE PERSONS OR ENTITIES SHOWN ON THE FACE OF THIS PLAT AND IS NON-TRANSFERABLE. THIS SURVEY IS CERTIFIED FOR THIS TRANSACTION ONLY.