

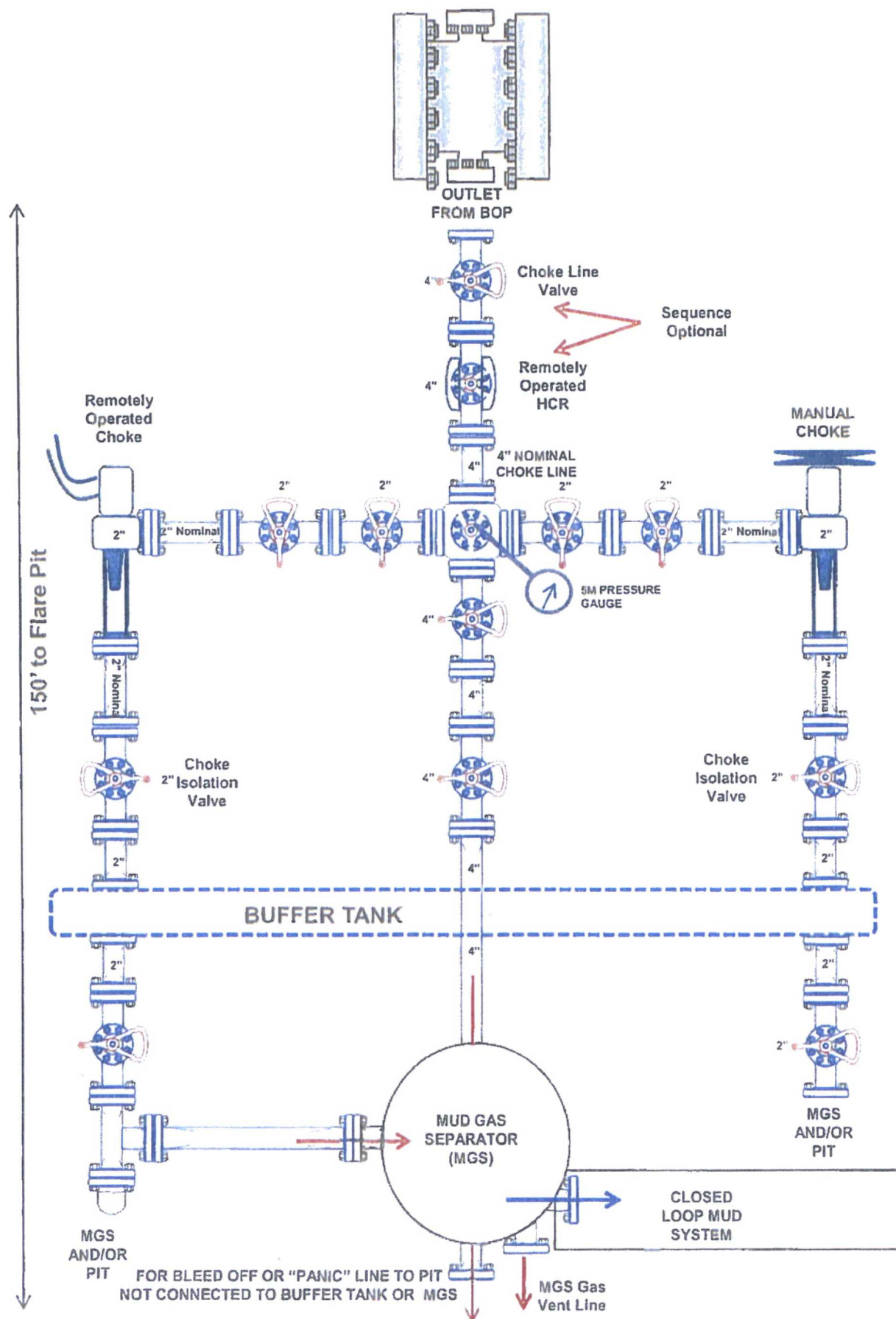
## Casing Program

Hole Size	Casing Interval		Csg. Size	Weight (lbs)	Grade	Conn.	SF Collapse	SF Burst	SF Tension
	From	To							
17.5"	0	880	13.375"	54.5	J55	STC	2.81	1.37	10.72
12.25"	0	4645	9.625"	40	J55	LTC	1.04	1.11	2.80
8.75"	0	13,894	5.5"	17	P110	LTC	1.67	2.98	2.85
BLM Minimum Safety Factor							1.125	1	1.6 Dry 1.8 Wet

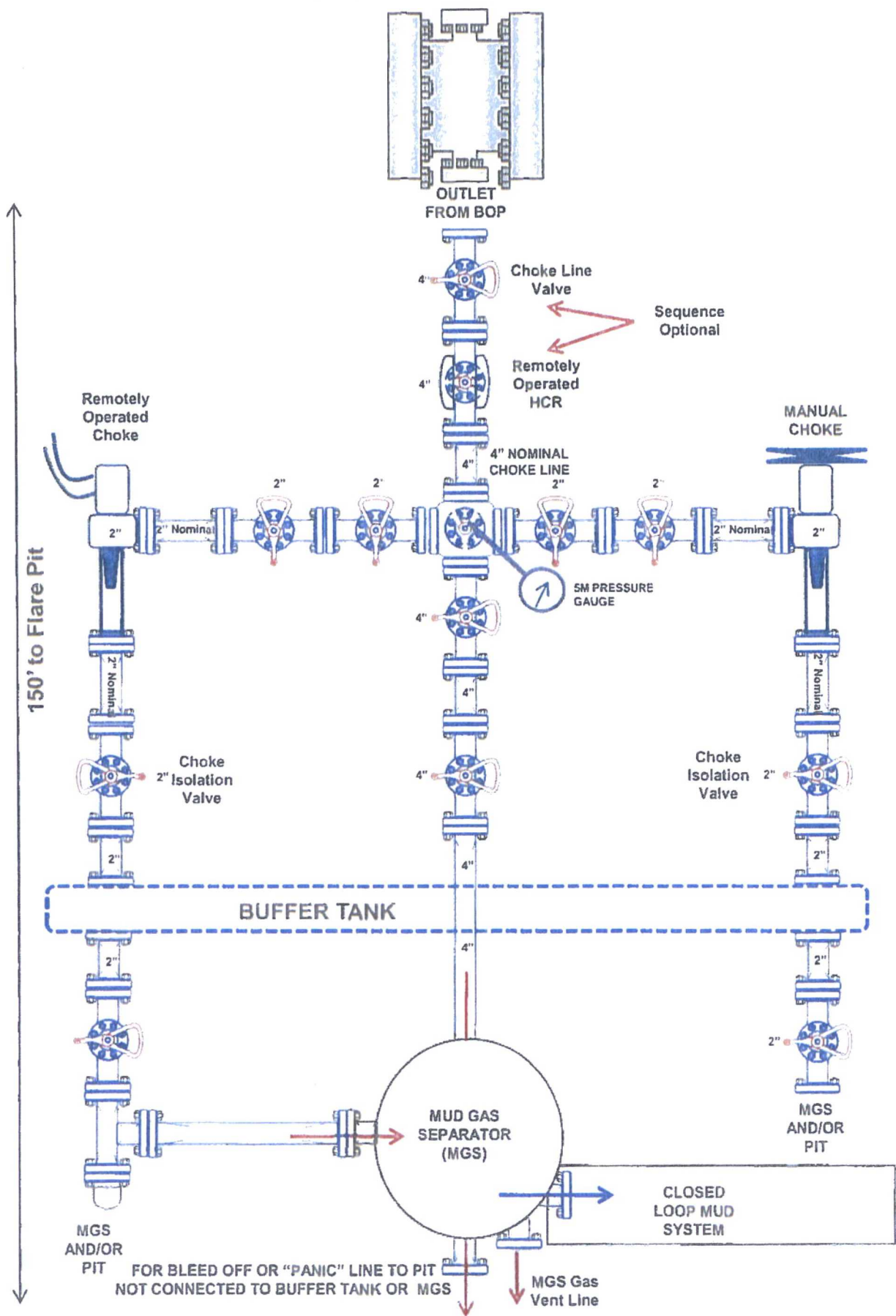
Intermediate casing will be kept at least 1/3 full while running casing to mitigate collapse. Intermediate burst based on 0.7 frac gradient at the shoe with Gas Gradient 0.1 psi/ft to surface.

All casing strings will be tested in accordance with Onshore Oil and Gas Order #2 III.B.1.h

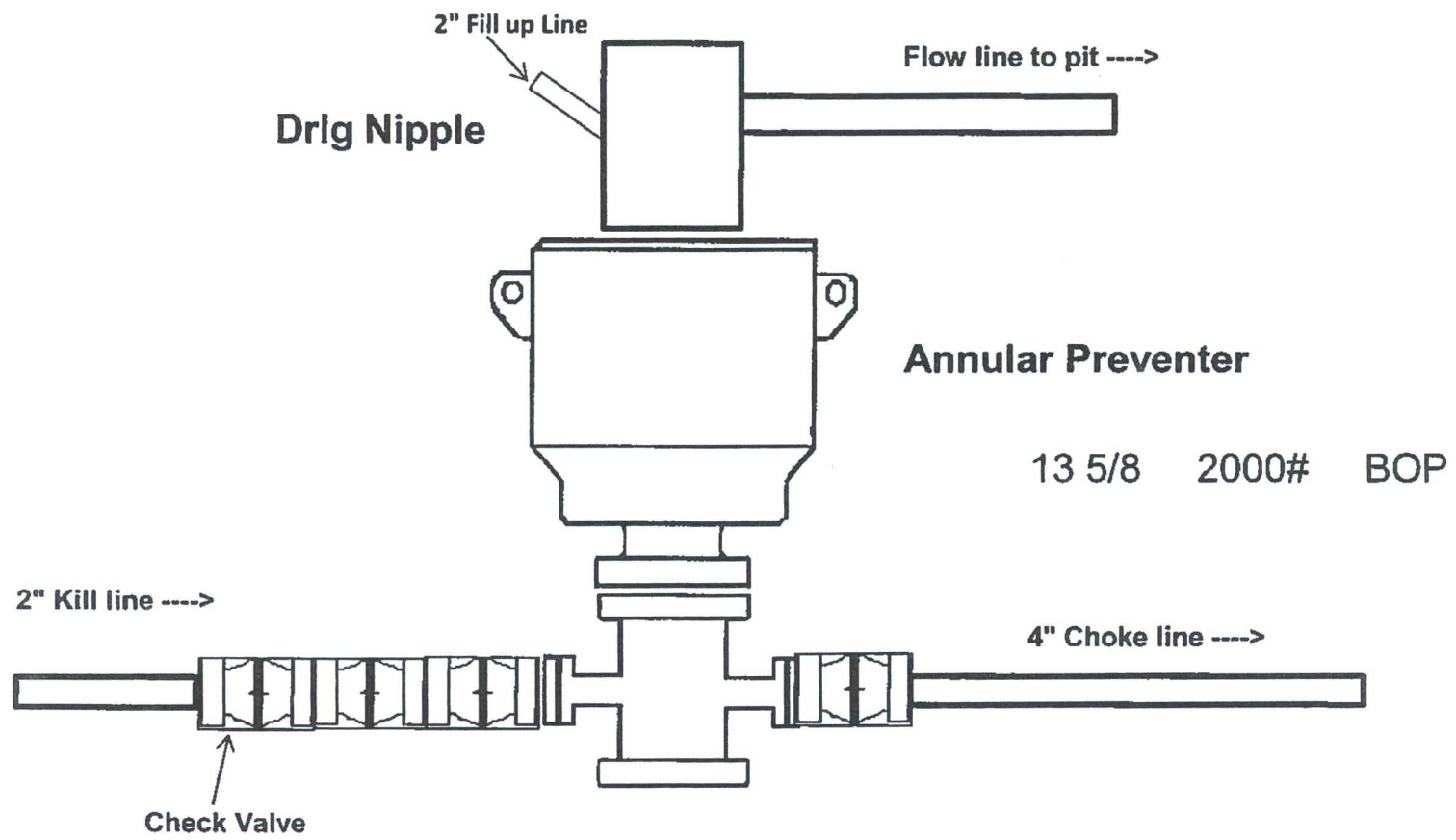
## 2M Choke Manifold Equipment (WITH MGS + CLOSED LOOP)



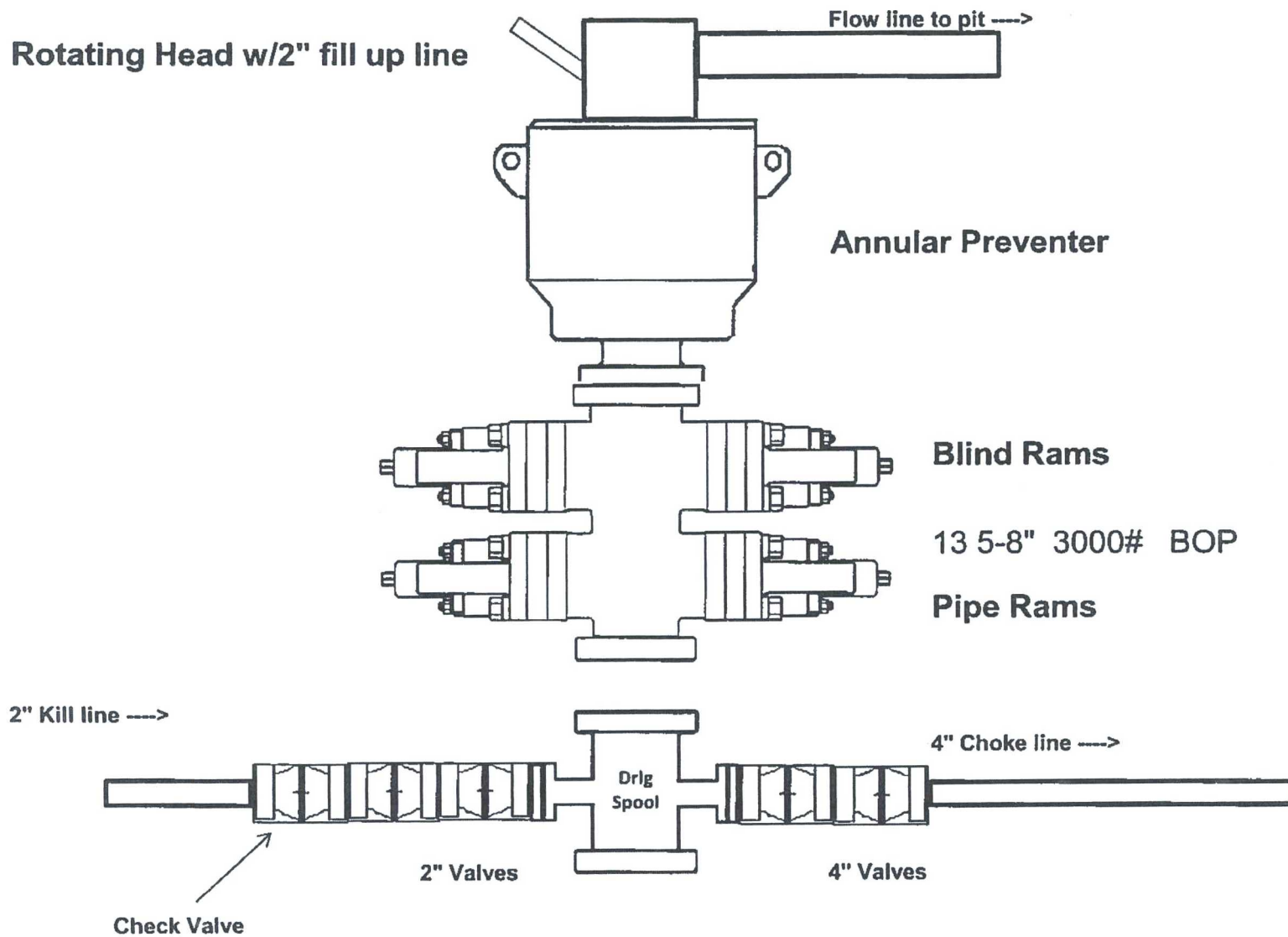
# 3M Choke Manifold Equipment (WITH MGS + CLOSED LOOP)



## 2,000 psi BOP Schematic



# 3,000 psi BOP Schematic





Surface Use Plan  
COG Production LLC  
Azores Federal #6H  
SHL: 210' FSL & 1850' FEL    UL O  
Section 29, T24S, R32E  
BHL: 200' FNL & 1650' FEL    UL B  
Section 29, T24S, R32E  
Lea County, New Mexico

---

### OPERATOR CERTIFICATION

I hereby certify that I, or persons under my direct supervision, have inspected the drill site and access road proposed herein; that I am familiar with the conditions that presently exist; that I have full knowledge of State and Federal laws applicable to this operation; that the statements made in this APD package are, to the best of my knowledge, true and correct; and that the work associated with the operations proposed herein will be performed in conformity with this APD package and the terms and conditions under which it is approved. I also certify that I, or COG Production LLC, am responsible for the operations conducted under this application. These statements are subject to the provisions of 18 U.S.C. 1001 for the filing of false statements. Executed this 17<sup>th</sup> day of FEBRUARY, 2017.

Signed: Mayte Reyes

Printed Name: Mayte Reyes

Position: Regulatory Analyst

Address: 2208 W. Main Street, Artesia, NM 88210

Telephone: (575) 748-6945

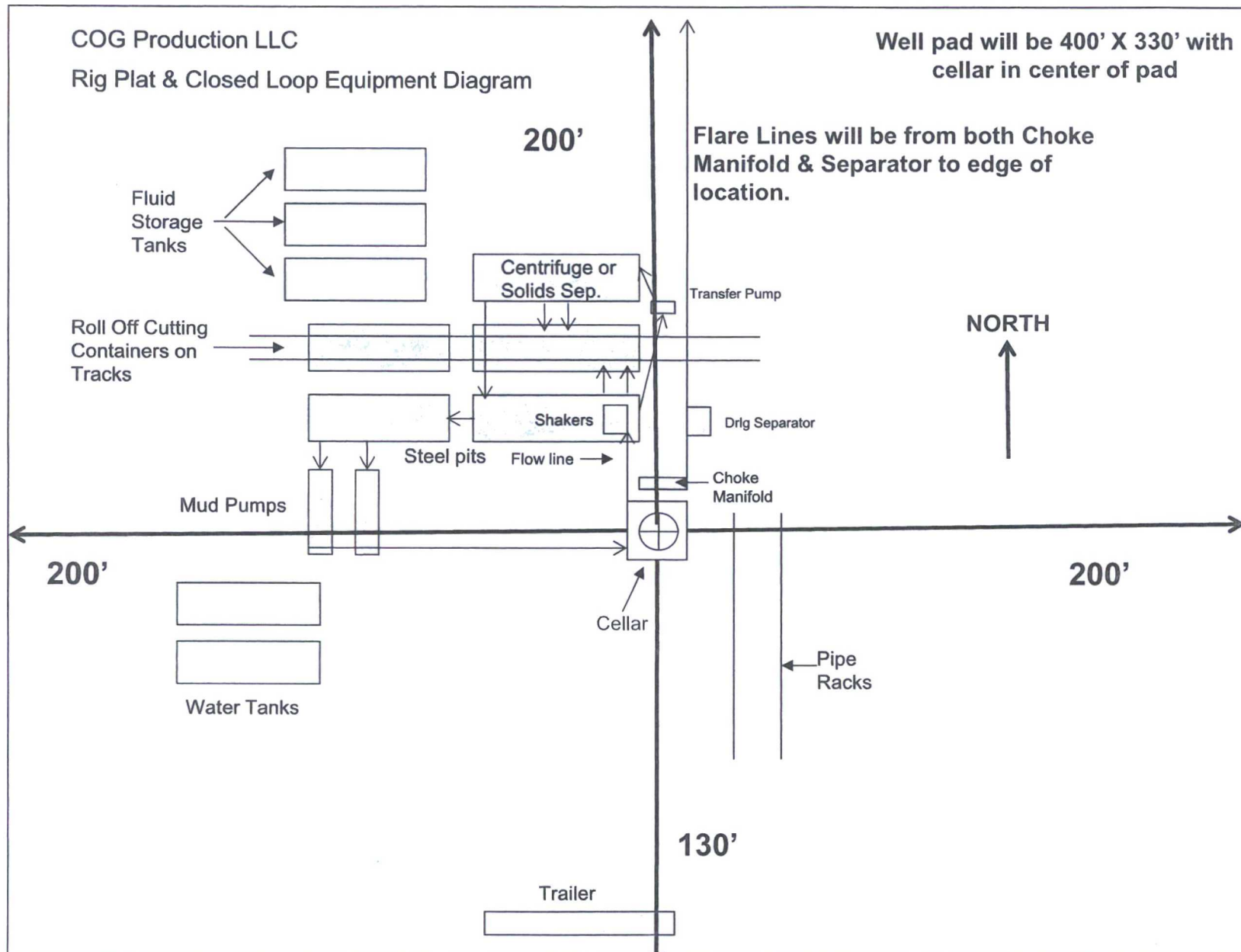
E-mail: mreyes1@concho.com

Field Representative (if not above signatory): Rand French

Telephone: (575) 748-6940. E-mail: rfrench@concho.com

COG Production LLC  
Rig Plat & Closed Loop Equipment Diagram

Well pad will be 400' X 330' with  
cellar in center of pad



"I further certify that COG will comply with Rule 19.15.17  
NMAC by using a Closed Loop System."