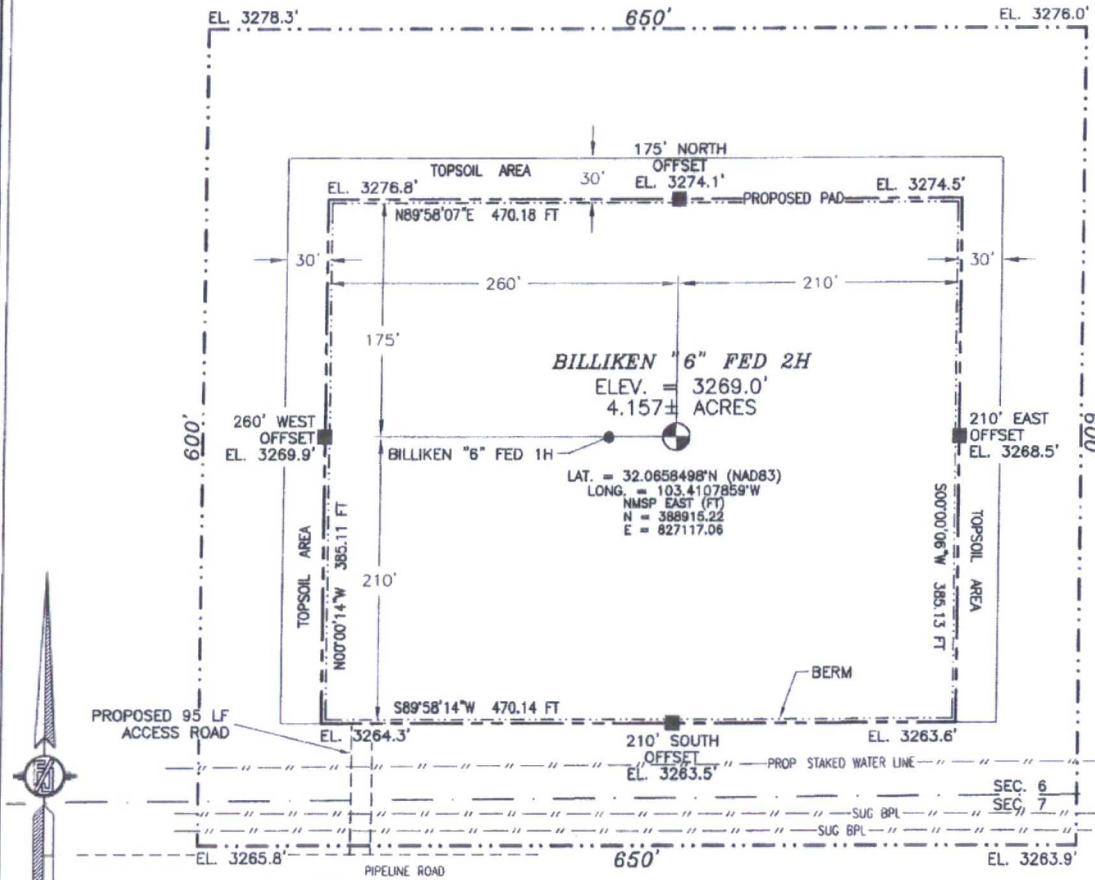


MAY 24 2017

RECEIVED

SECTION 6, TOWNSHIP 26 SOUTH, RANGE 35 EAST, N.M.P.M.
LEA COUNTY, STATE OF NEW MEXICO
SITE MAP

NOTE: LATITUDE AND LONGITUDE COORDINATES ARE SHOWN USING THE NORTH AMERICAN DATUM OF 1983 (NAD83). LISTED NEW MEXICO STATE PLANE EAST COORDINATES ARE GRID (NAD83). BASIS OF BEARING AND DISTANCES USED ARE NEW MEXICO STATE PLANE EAST COORDINATES MODIFIED TO THE SURFACE



0 12 60 120 240

SCALE 1" = 120'

DIRECTIONS TO LOCATION

FROM THE INTERSECTION OF STATE HIGHWAY 126 AND CR 2 (BATTLE AXE ROAD) GO SOUTH & WEST ON CR 2 APPROX. 12.2 MILES TO A LEASE ROAD ON LEFT (SOUTH) TURN SOUTH ON LEASE ROAD GO APPROX. 0.6 OF A MILE, ROAD TURNS LEFT (EAST) ON PIPELINE ROAD, GO EAST ON PIPELINE ROAD APPROX. 7.25 MILES TO A ROAD LATH WITH RED & WHITE PAINT ON LEFT (NORTH) OF PIPELINE ROAD. GO NORTH APPROX. 95' TO THE SOUTHWEST CORNER FOR THIS LOCATION.

DEVON ENERGY PRODUCTION COMPANY, L.P.

BILLIKEN "6" FED 2H

LOCATED 265 FT. FROM THE SOUTH LINE
AND 1345 FT. FROM THE WEST LINE OF

SECTION 6, TOWNSHIP 26 SOUTH,
RANGE 35 EAST, N.M.P.M.

LEA COUNTY, STATE OF NEW MEXICO

JUNE 9, 2015

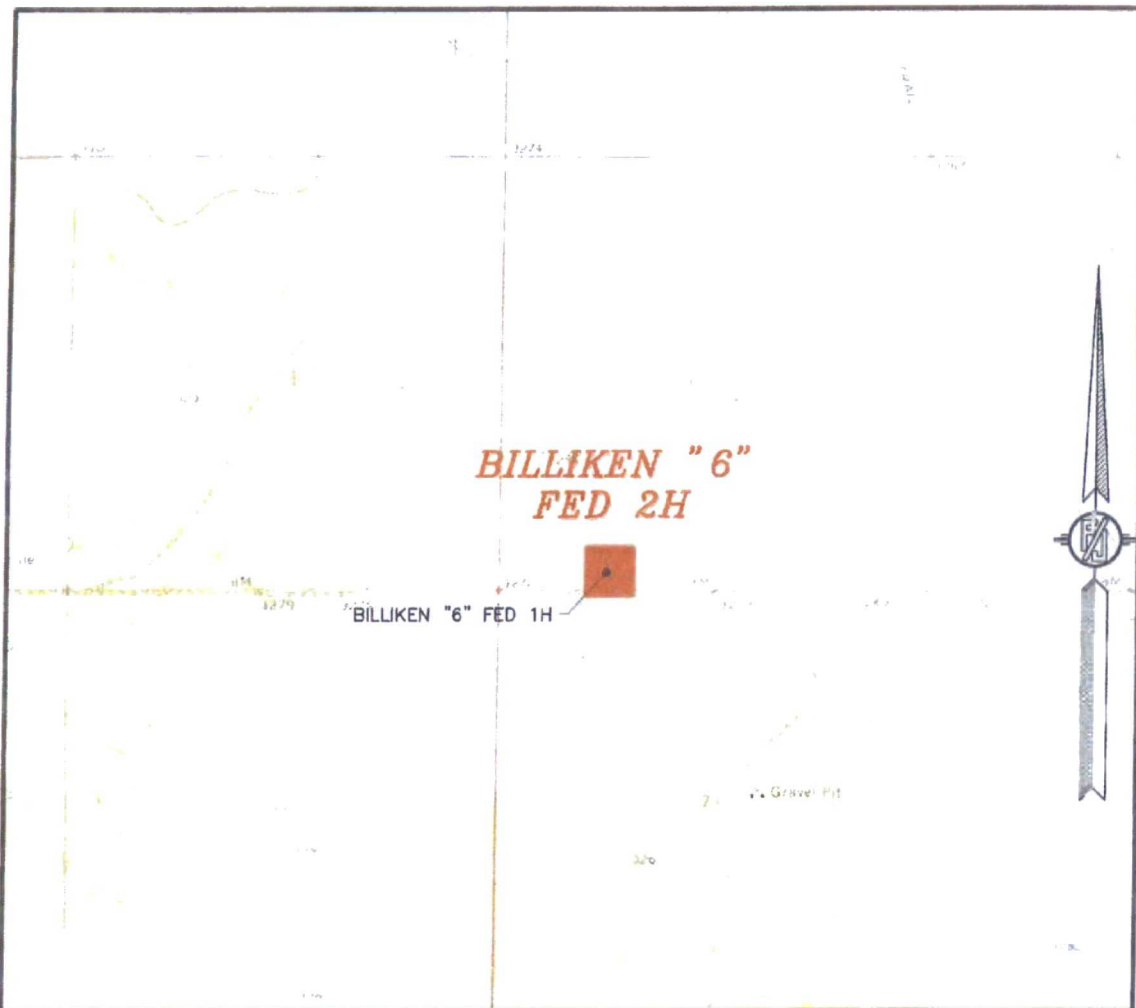
SURVEY NO. 4023

MADRON SURVEYING, INC.

301 SOUTH CANAL
(575) 234-3341

CARLSBAD, NEW MEXICO

SECTION 6, TOWNSHIP 26 SOUTH, RANGE 35 EAST, N.M.P.M.
LEA COUNTY, STATE OF NEW MEXICO
LOCATION VERIFICATION MAP



USGS QUAD MAP:
ANDREWS PLACE

NOT TO SCALE

DEVON ENERGY PRODUCTION COMPANY, L.P.

BILLIKEN "6" FED 2H

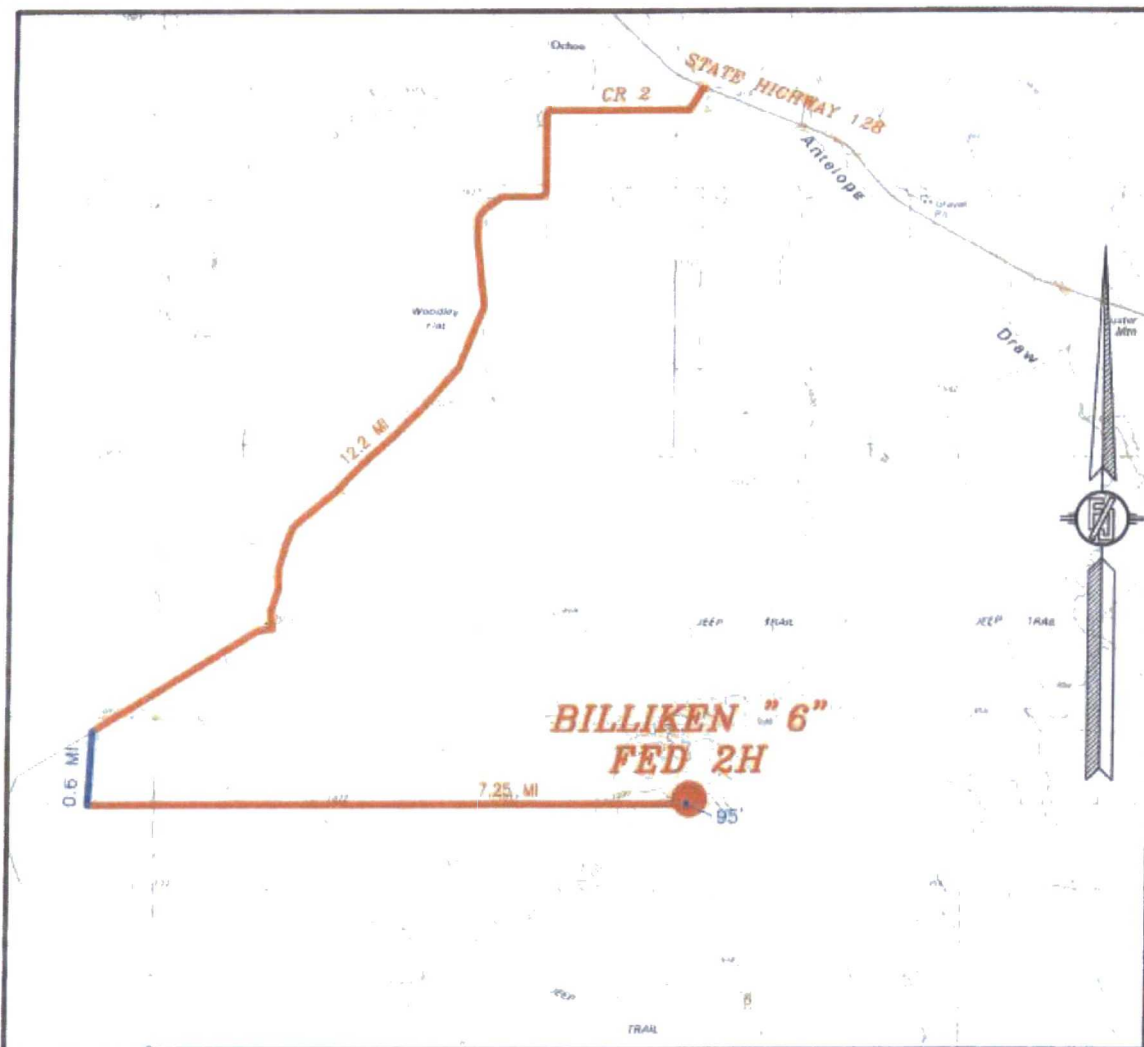
LOCATED 265 FT. FROM THE SOUTH LINE
AND 1345 FT. FROM THE WEST LINE OF
SECTION 6, TOWNSHIP 26 SOUTH,
RANGE 35 EAST, N.M.P.M.
LEA COUNTY, STATE OF NEW MEXICO

JUNE 9, 2015

SURVEY NO. 4023

MADRON SURVEYING, INC. 301 SOUTH CANAL (575) 234-3341 CARLSBAD, NEW MEXICO

SECTION 6, TOWNSHIP 26 SOUTH, RANGE 35 EAST, N.M.P.M.
LEA COUNTY, STATE OF NEW MEXICO
VICINITY MAP



DISTANCES IN MILES

NOT TO SCALE

DEVON ENERGY PRODUCTION COMPANY, L.P.

BILLIKEN "6" FED 2H

LOCATED 265 FT. FROM THE SOUTH LINE
AND 1345 FT. FROM THE WEST LINE OF

SECTION 6, TOWNSHIP 26 SOUTH,

RANGE 35 EAST, N.M.P.M.

LEA COUNTY, STATE OF NEW MEXICO

DIRECTIONS TO LOCATION

FROM THE INTERSECTION OF STATE HIGHWAY 128 AND CR 2 (BATTLE AXE ROAD) GO SOUTH & WEST ON CR 2 APPROX. 12.2 MILES TO A LEASE ROAD ON LEFT (SOUTH) TURN SOUTH ON LEASE ROAD GO APPROX. 0.6 OF A MILE, ROAD TURNS LEFT (EAST) ON PIPELINE ROAD, GO EAST ON PIPELINE ROAD APPROX. 7.25 MILES TO A ROAD LATH WITH RED & WHITE PAINT ON LEFT (NORTH) OF PIPELINE ROAD. GO NORTH APPROX. 95' TO THE SOUTHWEST CORNER FOR THIS LOCATION.

JUNE 9, 2015

SURVEY NO. 4023

MADRON SURVEYING, INC. 301 SOUTH CANAL (575) 234-3341 CARLSBAD, NEW MEXICO

SECTION 6, TOWNSHIP 26 SOUTH, RANGE 35 EAST, N.M.P.M.
LEA COUNTY, STATE OF NEW MEXICO
AERIAL PHOTO



NOT TO SCALE
AERIAL PHOTO:
GOOGLE EARTH
APRIL 2013

DEVON ENERGY PRODUCTION COMPANY, L.P.

BILLIKEN "6" FED 2H

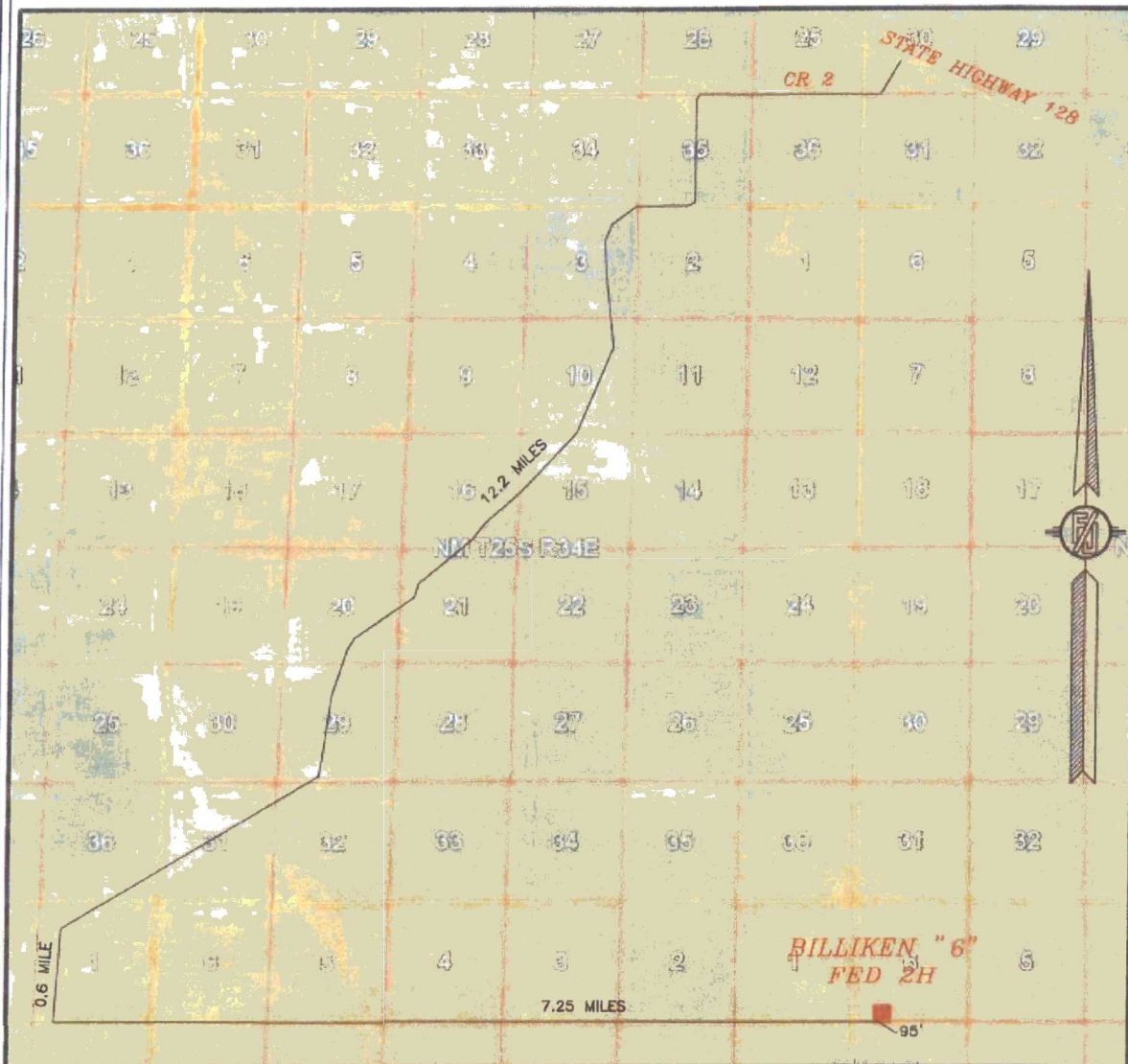
LOCATED 265 FT. FROM THE SOUTH LINE
AND 1345 FT. FROM THE WEST LINE OF
SECTION 6, TOWNSHIP 26 SOUTH,
RANGE 35 EAST, N.M.P.M.
LEA COUNTY, STATE OF NEW MEXICO

JUNE 9, 2015

SURVEY NO. 4023

MADRON SURVEYING, INC. 301 SOUTH CANAL (575) 234-3341 CARLSBAD, NEW MEXICO

SECTION 6, TOWNSHIP 26 SOUTH, RANGE 35 EAST, N.M.P.M.
LEA COUNTY, STATE OF NEW MEXICO
ACCESS AERIAL ROUTE MAP



NOT TO SCALE
AERIAL PHOTO:
GOOGLE EARTH
APRIL 2013

DEVON ENERGY PRODUCTION COMPANY, L.P.

BILLIKEN "6" FED 2H

LOCATED 265 FT. FROM THE SOUTH LINE
AND 1345 FT. FROM THE WEST LINE OF
SECTION 6, TOWNSHIP 26 SOUTH,
RANGE 35 EAST, N.M.P.M.
LEA COUNTY, STATE OF NEW MEXICO

JUNE 9, 2015

SURVEY NO. 4023

MADRON SURVEYING, INC. 301 SOUTH CANAL (575) 234-3341 CARLSBAD, NEW MEXICO