

State of New Mexico
Energy, Minerals and Natural ResourcesForm C-103
Revised July 18, 2013OIL CONSERVATION DIVISION
1220 South St. Francis Dr.
Santa Fe, NM 87505WELL API NO.
30-025-20857

5. Indicate Type of Lease

STATE ☐ FEE X ☒

6. State Oil & Gas Lease No.

7. Lease Name or Unit Agreement Name
West Jal "B"

8. Well Number 1

9. OGRID Number
02567010. Pool name or Wildcat
SWD; Delaware

SUNDRIED NOTICES AND REPORTS ON WELLS

(DO NOT USE THIS FORM FOR PROPOSALS TO DRILL OR TO DEEPEN OR PLUG BACK TO A DIFFERENT RESERVOIR. USE "APPLICATION FOR PERMIT" (FORM C-101) FOR SUCH PROPOSALS.)

1. Type of Well: Oil Well ☐ Gas Well ☐ Other SWD ☒2. Name of Operator
BC & D Operating, Inc.3. Address of Operator
P.O. Box 302, Hobbs, New Mexico 88241

4. Well Location

Unit Letter J : 1980 feet from the South line and 1980 feet from the East line
Section 17 Township 25S Range 36E NMPM Lea County11. Elevation (Show whether DR, RKB, RT, GR, etc.)
3118' RKB

12. Check Appropriate Box to Indicate Nature of Notice, Report or Other Data

NOTICE OF INTENTION TO:

PERFORM REMEDIAL WORK ☐ PLUG AND ABANDON ☐
TEMPORARILY ABANDON ☐ CHANGE PLANS ☐
PULL OR ALTER CASING ☐ MULTIPLE COMPL ☐
DOWNHOLE COMMINGLE ☐
CLOSED-LOOP SYSTEM ☐
OTHER: ☐

SUBSEQUENT REPORT OF:

REMEDIAL WORK ☐ ALTERING CASING ☐
COMMENCE DRILLING OPNS. ☐ P AND A ☐
CASING/CEMENT JOB ☐
OTHER: MIT ☐

13. Describe proposed or completed operations. (Clearly state all pertinent details, and give pertinent dates, including estimated date of starting any proposed work). SEE RULE 19.15.7.14 NMAC. For Multiple Completions: Attach wellbore diagram of proposed completion or recompletion.

Date of test: 6/01/2017

Pressure Reading: Initial @ 600 Psig; 15 Min @ 600 Psig; 32 Min @ 600 Psig

Length of test: 32 minutes

Witnessed: Yes

Packer set @ 5,264'
Top Perf @ 5,340'

Spud Date:

Rig Release Date:

I hereby certify that the information above is true and complete to the best of my knowledge and belief.

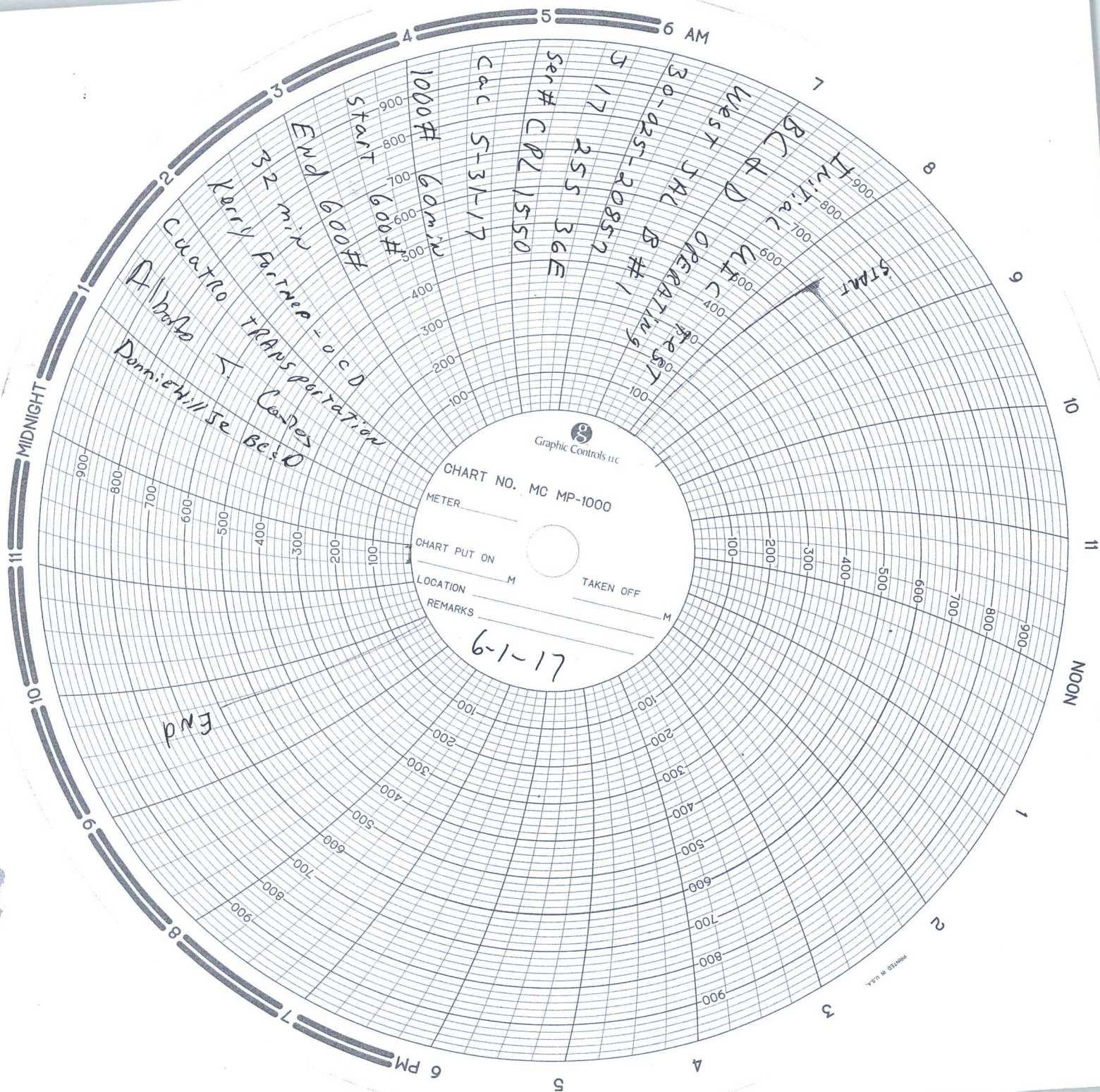
SIGNATURE Donnie Hill TITLE President DATE 6/01/2017Type or print name Donnie Hill E-mail address: dhill@wellconsultant.com PHONE: 575-390-7626

For State Use Only

APPROVED BY: Marky Brown TITLE AO/II DATE 6/5/2017

Conditions of Approval (if any):

RBDMS - CHART - ✓



BC&D OPERATING, INC.

WEST JAL B # 1

30-025-20857

UNIT "J", 1980' FSL, 1980' FEL, SEC. 17, T25S, R36E

Well Data

Elevation: 3138' KB, 3118' GL

TD: 12275', PBTD: 6170'

Surface Csg: 13-3/8" 48# @ 348' w/ cement circ. to surface
Inter. Csg: 9-5/8" 36# @ 5231' w/ cement circ. to surface as indicated by RBCL dated 5/11/2017
Production: 7" 26# LT&C @ 6770' w/ TOC @ 820' FS as indicated by RCBL dated 5/17/2017
CIBP @ 6200' capped w/ cement
PBTD @ 6170'
Perfs @ 5340' – 5975'
7" Pkr @ 5264'

- a) Safe and environmentally friendly operations are of the utmost importance to all BC & D properties and facilities. To further this goal, the BC & D Supervisor at the location shall request tailgate safety meeting prior to initiation of work and also prior to any critical operations. All Company, contact, and service personnel then present at the location shall attend these tailgate safety meetings to review proposed upcoming steps, procedures, and potentially hazardous situations. Occurrence of these meetings shall be recorded in the Daily Reports. Prepare or review a Job Safety Analysis before each and every task. STOP WORK OBSERVATIONS are expected and encouraged.
- b) Keep Material Safety Data Sheets, (MSDS), on location, for all mud products and chemicals, available to all well-site personnel for review.
- c) Post Emergency Numbers near your telephone.
- d) All service company representatives working on a BC & D location are required to have a minimum training prior to beginning of work.
- e) **HOLD OPERATIONAL AND SAFETY MEETING WITH ALL PERSONNEL ON LOCATION.** Review the objective of the task at hand, the procedure, critical parameters.

PROCEDURE:

4/15/2017 - Clean road and location of all debris,

4/16/2017 - Dig out cellar, install 13-3/8" x 9-5/8" 3k well head,

5/1/2017 - Miru Drilling Rig, Nu & test BOP, Ru H2S equipment, conduct safety mtg.

5/2/2017 - Pu and Tih w/ 8-3/4" Bit, BHA, Drill out 9-5/8" surface plug, & cement plugs @ 1350' – 1450', 3265' – 3326',

5/3/2017 – Continue drilling cement plug down to 3365', fall out of cement, circ. hole clean, Tih Tag @ 4107',

5/4/2017 - Could not make further progress, Pooh & Ld 8-3/4" bit, Pu and Tih w/ 6-1/8" bit & BHA, Did not tag obstruction @ 4107', Continue in hole to tag cement plug @ 5150', break circ and begin drilling cement, fall out of cement @ 5315', Circulate hole clean, Continue tripping in hole to tag PBD @ 6804', Circ hole clean, Pooh & lay down drill pipe & BHA, Rd & Rls Drilling rig.

5/4/2017 – Submit one call,

5/8/2017 – Install anchors, Miru Completion rig & associated equipment, Nu & test BOP,

5/9/2017 – Pu and Tih w/ 6-1/8" bit, (6) 4-3/4" drill collars, & 2-7/8" PH-6 tbg, did not tag @ 4107', continue in hole to 6804', circulate hole clean, Pooh w/ tbg to 4020', secure well, SION

5/10/2017 – Pooh w/ 2-7/8" work string & BHA, Pu and Tih w/ 7" Pkr & 2-7/8" tbg, attempt to set pkr @ 4100' dn to 4300', no success, Pooh & Ld packer, secure well, SION

5/11/2017 – Miru Wire line equipment, Pu and Tih w/ Multi Sensor 60 arm Caliper Electro Magnetic Wall Thickness/GR/CCL tools to 6804', Caliper indicated 8-3/4" from 6804' to surface shoe @ 5231', 5231' to 4178' good 9-5/8" casing, 4178' to 4089' reduced hole (obstruction), 4089' to surface good 9-5/8" casing, Ld tools, Pu and Tih w/ RBL/GR/CCL Tools to 4089', Pull bond log to surface with good cement bond from 4089' to surface, Rd & Rls wireline truck, secure well, SION

5/12/2017 – Pu and Tih w/ 8-1/2" string mill, (6) 4-3/4" drill collars & 2-7/8" PH-6 tbg, tag obstruction @ 4107', break circ., wipe out debri from 4107' – 4178', continue Tih w/ BHA to tag @ 6775', circulate hole clean, Pooh & Ld mill, secure well, SION

5/13/2017 – Miru casing crew, conduct safety mtg, Pu and Tih w/ 7" Float shoe, 7" 26 ppf x 41' float joint, 7" Float Collar, 1460' 7" 26 ppf casing, 7" DV tool, 5310' 7" 26 ppf casing, Miru OTEX Cement equipment, Rd & Rls casing crew, OTEX to pump Stage # 1 as follows: 230 sxs. @ 14.8 ppg, 1.26 yield, 5.72 gals H2O per sx, drop plug, displace, slow rate, land plug, drop bomb, open DV tool, circulate 3 bbls slurry off top of DV tool, circulate 4 hrs., pump spacer, pump Stage # 2 as follows: 50 sxs. @ 11.8 ppg, 2.45 yield, 14.08 gals/sx, 180 sxs @ 14.2 ppg, 1.26 yield, 5.72 gals/sx, drop plug, displace, Slow rate, land plug, check flow back, all good, Rd & Rls OTEX, Secure well, SI, WOC

5/14/2017 – SI -WOC

5/15/2017 – Set 7" slips, cut off 7" & install tbg head, Nu & test BOP, Pu and Tih 6-1/8" bit, (6) 4-3/4" drill collars & 2-7/8" PH-6 tbg, Pu powers swivel, break circ, drill out DV tool @ 5310', test casing @ 1500 Psig, held good, continue in hole, tag FC, Circ hole clean,

5/16/2017 - Pull up hole to 6000', spot 2500 gals 15% NeFe double inhibited acid, Pooh and Ld 2-7/8" PH-6 & BHA, Secure well, SION

5/17/2017 – Miru Wire line truck, Pu and Tih w/ RBL/GR/CCL Tools, tag @ 6770', Pull RBL to TOC @ 820' FS, Pooh and Ld Tools, Pu and Tih w/ Compensated Neutron/GR/CCL Tools, Tag @ 6770', Pull CNL/GR/CCL back to 5200', Pooh and Ld logging tools, Secure well, SION

5/18/2017 – Pu and Tih w/ CIBP to 6200', set CIBP @ 6200' and cap with cement, (PBTD @ 6170'), Pu and Tih w/ 3-1/4" perforating guns, perforate 2 spf @ 5340' to 5975', Pooh w/ WL tools, Rd & Rls WL equipment, Secure well, SION



5/19/2017 – Miru casing crew, Pu and Tih w/ 3-1/2" 8rd EUE WL Re-entry guide (nickel plated), 7" x 3-1/2" Arrow set 7k Nickel Plated Packer, On/Off tool (nickel plated), 4-1/2" LTC box x 3-1/2" 8rd EUE Pin cross over, 130 jts 4-1/2" 11.6# 8rd LT&C P-110 tubing, Set Packer @ 5264', Rd & Rls casing crew, Miru pump truck, get off on/off tool, break circulation down 7" x 4-1/2" annulus, pump 120 bbls 2% Kcl water with 2% packer fluid, good circulation, engage packer w/ on/off tool, set slips, waiting on tree, secure well, SION

5/20/2017 thru 5/25/2017 – Wait on tree.

5/26/2017 – Tree to location, Install & NU tree, Rd & Rls Completion Rig. Well is now ready for MIT to be conducted on ~6/1/2017.

6/1/2017 -

BC&D Operating
West Jal B #1

Final Installation				19-May-17	Company Rep. Donnie Hill Tool Specialist Waylon Crozier
Installation	Length	Depth	Description	OD	ID
	20.00	20.00	KBC Rig KB 20'		
		20.00			
		20.00			
	(3.50)	16.50	Slack off #30K		
		16.50			
		16.50			
		16.50			
		16.50			
	5,237.21	5,253.71	130 Jts. 4-1/2" 11.6# 8rd. LTC P-110 IPC Tubing	5.000	3.970
		5,253.71	31 J-55 Joints on Top		
		5,253.71	99 P-110 Joints on Bottom		
		5,253.71			
		5,253.71			
	0.48	5,254.19	4-1/2" LTC Box x 3-1/2" 8rd EUE Pin Crossover	5.050	3.050
		5,254.19			
	1.94	5,256.13	On/Off Tool	5.870	3.000
		5,256.13	Nickel Plated		
		5,256.13			
		5,256.13			
	8.00	5,264.13	7" x 3-1/2" Arrowset 7K	6.000	2.990
		5,264.13	Nickel Plated		
		5,264.13			
		5,264.13			
		5,264.13			
		5,264.13			
		5,264.13			
		5,264.13			
	0.38	5,264.51	3-1/2" 8RD EUE Wireline Re-entry Guide	4.500	3.050
			Nickel Plated		

West Jal B # 1

API # 30-025-20857

