

District I
1625 N. French Dr., Hobbs, NM 88240
Phone: (575) 393-6161 Fax: (575) 393-0720
District II
811 S. First St., Artesia, NM 88210
Phone: (575) 748-1283 Fax: (575) 748-9720
District III
1000 Rio Brazos Road, Aztec, NM 87410
Phone: (505) 334-6178 Fax: (505) 334-6170
District IV
1220 S. St. Francis Dr., Santa Fe, NM 87505
Phone: (505) 476-3460 Fax: (505) 476-3462

State of New Mexico
Energy, Minerals & Natural Resources
Department
OIL CONSERVATION DIVISION
1220 South St. Francis Dr.
Santa Fe, NM 87505

FORM C-102
Revised August 1, 2011
Submit one copy to appropriate
District Office

☐ AMENDED REPORT

WELL LOCATION AND ACREAGE DEDICATION PLAT

¹ API Number 30-025- 43556	² Pool Code 98097	³ Pool Name WC-025 G-09 S263327G; Upper Wolfcamp
⁴ Property Code 317298	⁵ Property Name MAGNOLIA 15	⁶ Well Number #702H
⁷ OGRID No. 7377	⁸ Operator Name EOG RESOURCES, INC.	⁹ Elevation 3295'

¹⁰Surface Location

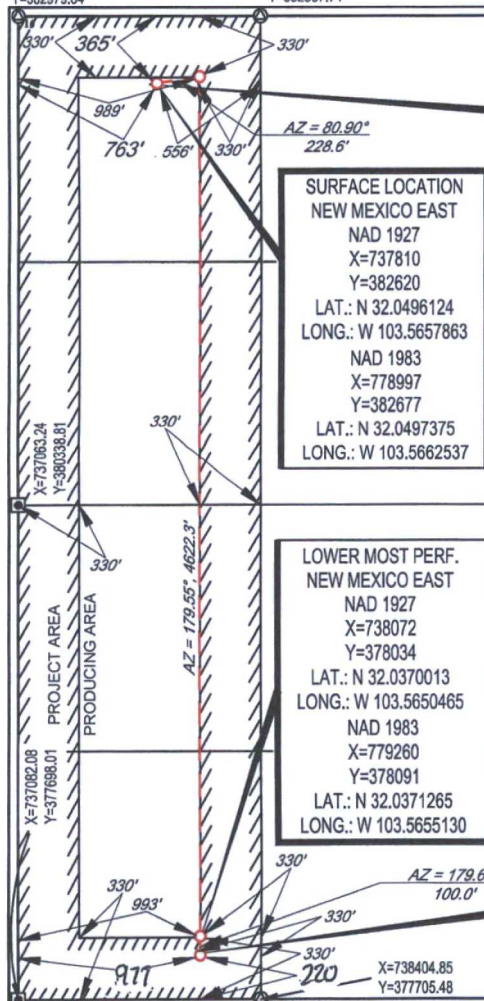
UL or lot no. D	Section 15	Township 26-S	Range 33-E	Lot Idn -	Feet from the 365'	North/South line NORTH	Feet from the 763'	East/West line WEST	County LEA
--------------------	---------------	------------------	---------------	--------------	-----------------------	---------------------------	-----------------------	------------------------	---------------

UL or lot no. M	Section 15	Township 26-S	Range 33-E	Lot Idn -	Feet from the 220	North/South line SOUTH	Feet from the 977	East/West line WEST	County LEA
--------------------	---------------	------------------	---------------	--------------	----------------------	---------------------------	----------------------	------------------------	---------------

¹² Dedicated Acres 160.00	¹³ Joint or Infill	¹⁴ Consolidation Code	¹⁵ Order No.
---	-------------------------------	----------------------------------	-------------------------

No allowable will be assigned to this completion until all interests have been consolidated or a non-standard unit has been approved by the division.

X=737044.47
Y=382979.64
X=738363.54
Y=382987.74



UPPER MOST PERF.
NEW MEXICO EAST
NAD 1927
X=738036
Y=382656
LAT.: N 32.0497074
LONG.: W 103.5650571
NAD 1983
X=779223
Y=382713
LAT.: N 32.0498325
LONG.: W 103.5655244

SURFACE LOCATION
NEW MEXICO EAST
NAD 1927
X=737810
Y=382620
LAT.: N 32.0496124
LONG.: W 103.5657863
NAD 1983
X=778997
Y=382677
LAT.: N 32.0497375
LONG.: W 103.5662537

LOWER MOST PERF.
NEW MEXICO EAST
NAD 1927
X=738072
Y=378034
LAT.: N 32.0370013
LONG.: W 103.5650465
NAD 1983
X=779260
Y=378091
LAT.: N 32.0371265
LONG.: W 103.5655130

BOTTOM HOLE LOCATION
NEW MEXICO EAST
NAD 1927
X=738073
Y=377934
LAT.: N 32.0367264
LONG.: W 103.5650470
NAD 1983
X=779261
Y=377991
LAT.: N 32.0368516
LONG.: W 103.5655135

¹⁷OPERATOR CERTIFICATION

I hereby certify that the information contained herein is true and complete to the best of my knowledge and belief, and that this organization either owns a working interest or unleased mineral interest in the land including the proposed bottom hole location or has a right to drill this well at this location pursuant to a contract with an owner of such a mineral or working interest, or to a voluntary pooling agreement or a compulsory pooling order heretofore entered by the division.

Signature: Kay Maddox
Date: 6/18/17
Printed Name: KAY MADDOX
E-mail Address: Kay-maddox@egoresources.com

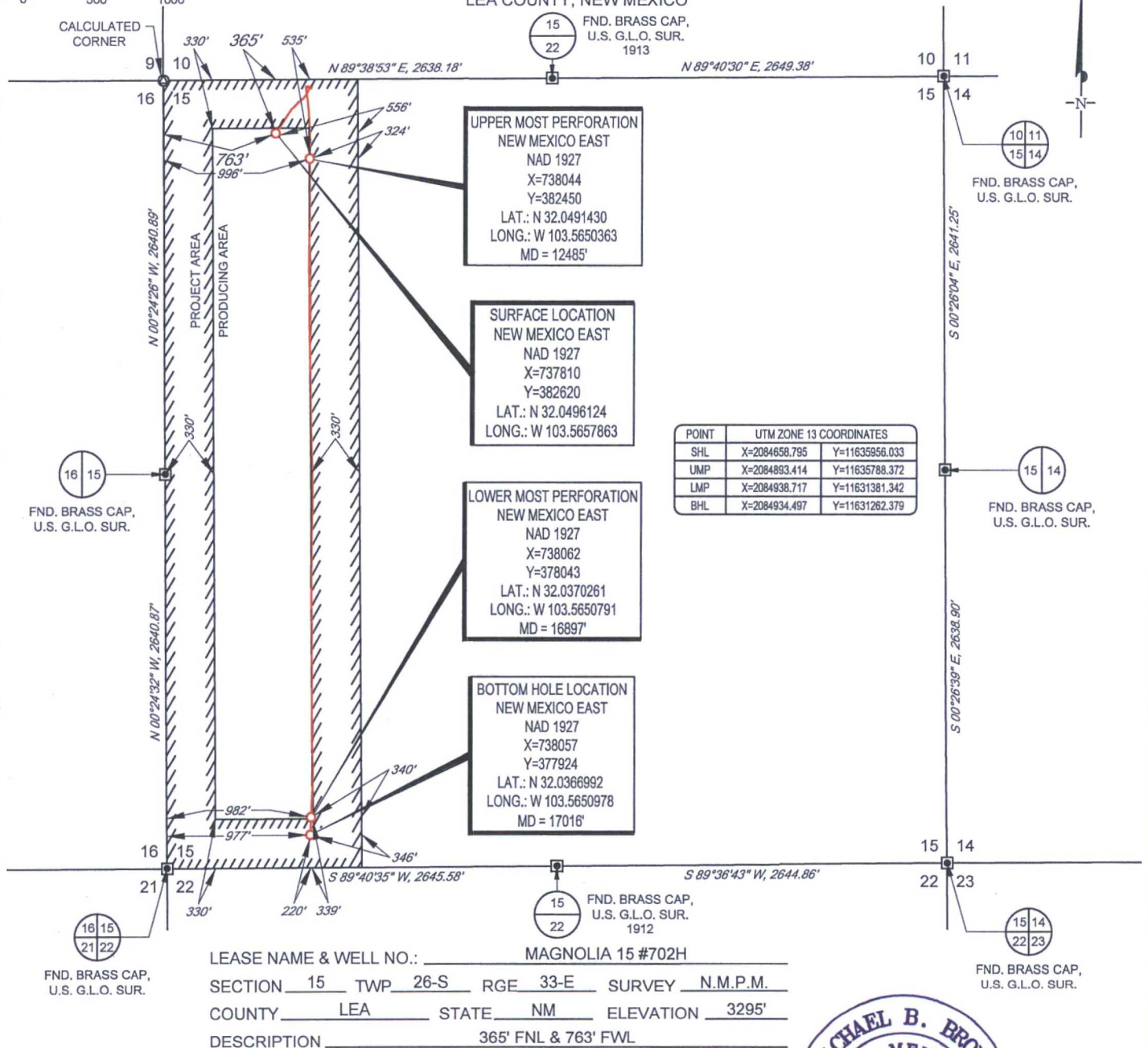
¹⁸SURVEYOR CERTIFICATION

I hereby certify that the well location shown on this plat was plotted from field notes of actual surveys made by me or under my supervision, and that the same is true to the best of my belief.

Date of Survey: 1/09/2017
Signature and Title: [Signature]
Certificate Number: 18329

SCALE: 1" = 1000'

SECTION 15, TOWNSHIP 26-S, RANGE 33-E, N.M.P.M.
LEA COUNTY, NEW MEXICO



TOPOGRAPHIC
LOYALTY INNOVATION LEGACY
1400 EVERMAN PARKWAY, Ste. 197 • FT. WORTH, TEXAS 76140
TELEPHONE: (817) 744-7512 • FAX (817) 744-7548
2803 NORTH BIG SPRING • MIDLAND, TEXAS 79705
TELEPHONE: (432) 682-1653 OR (800) 767-1653 • FAX (432) 682-1743
WWW.TOPOGRAPHIC.COM



Michael Blake Brown, P.S. No. 18329
JUNE 8, 2017

MAGNOLIA 15 #702H AS-COMPLETED	REVISION:		NOTES:
DATE: 06/08/17			<p>1. ORIGINAL DOCUMENT SIZE: 8.5" X 11"</p> <p>2. ALL BEARINGS, DISTANCES, AND COORDINATE VALUES CONTAINED HEREIN ARE GRID BASED UPON THE NEW MEXICO STATE PLANE COORDINATE SYSTEM, EAST ZONE, U.S. SURVEY FEET, NORTH AMERICAN DATUM 19 27.</p> <p>3. THIS WELL LOCATION SHOWN HEREON HAS BEEN SURVEYED ON THE GROUND UNDER MY SUPERVISION AND PREPARED ACCORDING TO THE EVIDENCE FOUND AT THE TIME OF SURVEY, AND DATA PROVIDED BY EOG RESOURCES, INC. THIS CERTIFICATION IS MADE AND LIMITED TO THOSE PERSONS OR ENTITIES SHOWN ON THE FACE OF THIS PLAT AND IS NON-TRANSFERABLE. THIS SURVEY IS CERTIFIED FOR THIS TRANSACTION ONLY.</p>
FILE:AD_MAGNOLIA_15_702H			
DRAWN BY: A.C.C.			
SHEET: 1 OF 1			