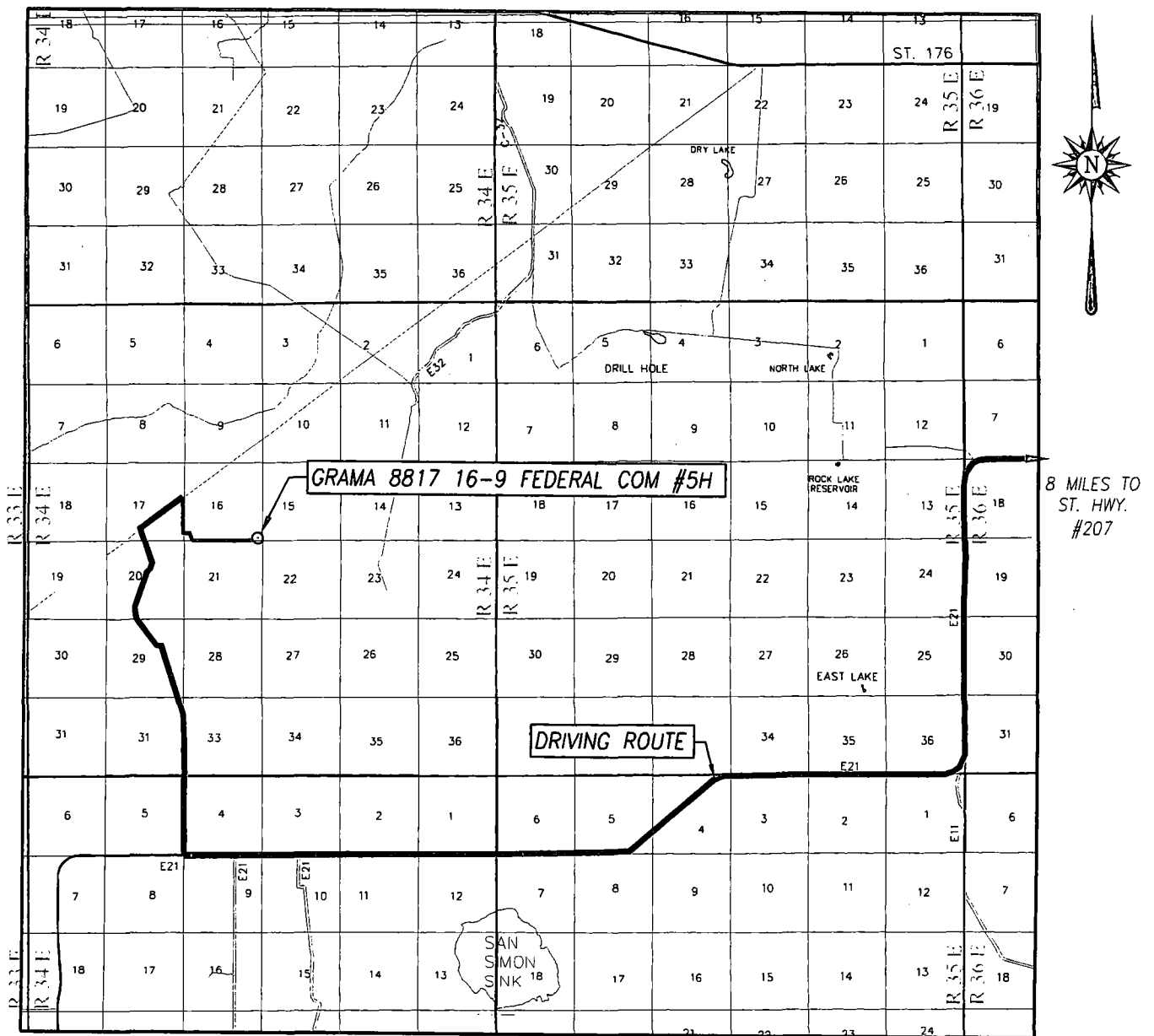


# VICINITY MAP



SCALE: 1" = 2 MILES

DRIVING ROUTE: SEE TOPOGRAPHICAL AND ACCESS ROAD MAP

SEC. 16 TWP. 22-S RGE. 34-E

SURVEY N.M.P.M.


COUNTY LEA STATE NEW MEXICO

DESCRIPTION 200' FSL & 330' FEL

ELEVATION 3479'

OPERATOR BTA OIL PRODUCERS, LLC

LEASE GRAMA 8817 16-9 FEDERAL COM

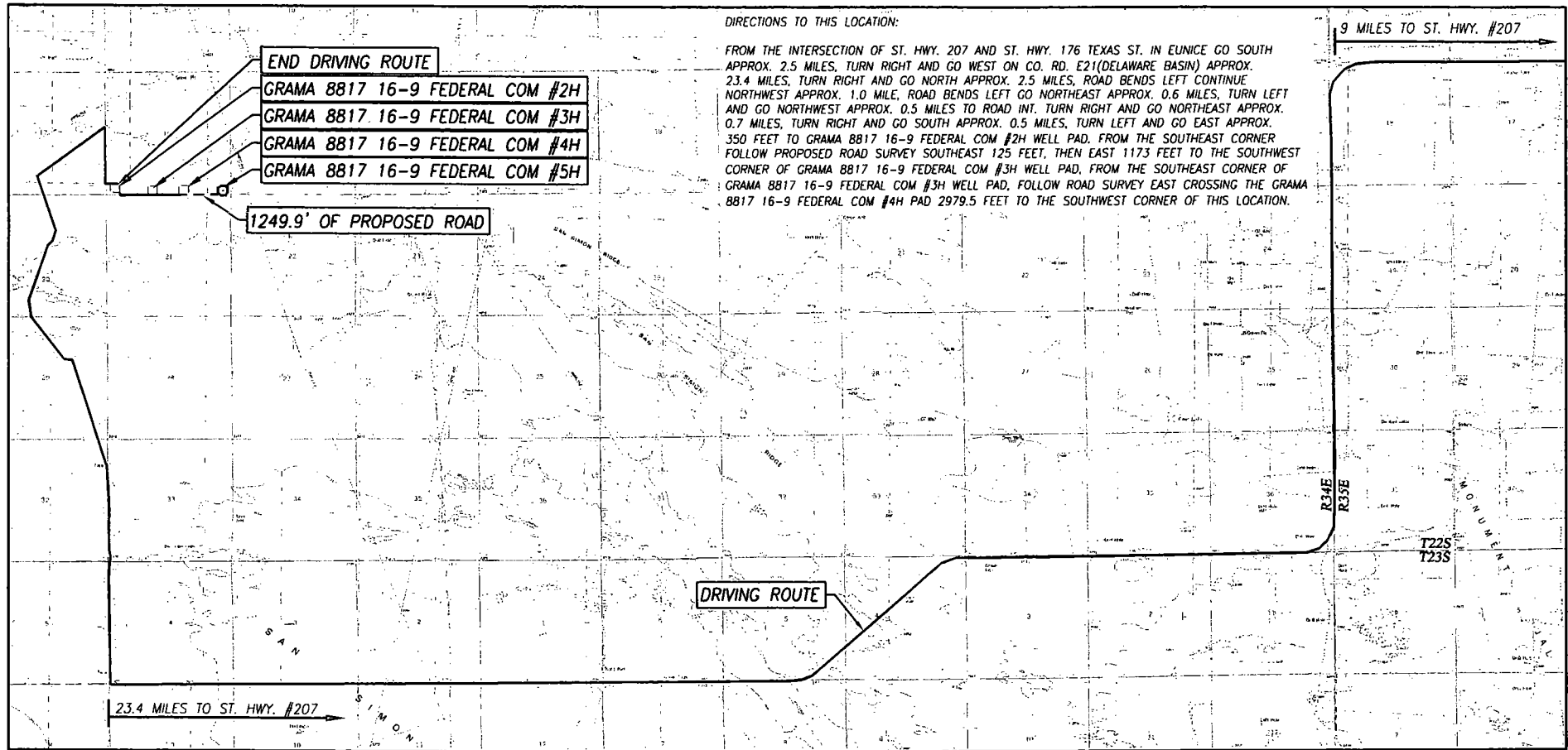


PROVIDING SURVEYING SERVICES  
SINCE 1946

**JOHN WEST SURVEYING COMPANY**

412 N. DAL PASO HOBBS, N.M. 88240  
(575) 393-3117 [www.jwsc.biz](http://www.jwsc.biz)  
TBPLS# 10021000

# TOPOGRAPHIC AND ACCESS ROAD MAP



## DIRECTIONS TO THIS LOCATION:

FROM THE INTERSECTION OF ST. HWY. 207 AND ST. HWY. 176 TEXAS ST. IN EUNICE GO SOUTH APPROX. 2.5 MILES, TURN RIGHT AND GO WEST ON CO. RD. E21(DELAWARE BASIN) APPROX. 2.34 MILES, TURN RIGHT AND GO NORTH APPROX. 2.5 MILES, ROAD BENDS LEFT CONTINUE NORTHWEST APPROX. 1.0 MILE, ROAD BENDS LEFT GO NORTHEAST APPROX. 0.6 MILES, TURN LEFT AND GO NORTHWEST APPROX. 0.5 MILES TO ROAD INT. TURN RIGHT AND GO NORTHEAST APPROX. 0.7 MILES, TURN RIGHT AND GO SOUTH APPROX. 0.5 MILES, TURN LEFT AND GO EAST APPROX. 350 FEET TO GRAMA 8817 16-9 FEDERAL COM #2H WELL PAD, FROM THE SOUTHEAST CORNER FOLLOW PROPOSED ROAD SURVEY SOUTHEAST 125 FEET, THEN EAST 1173 FEET TO THE SOUTHWEST CORNER OF GRAMA 8817 16-9 FEDERAL COM #3H WELL PAD, FROM THE SOUTHEAST CORNER OF GRAMA 8817 16-9 FEDERAL COM #3H WELL PAD, FOLLOW ROAD SURVEY EAST CROSSING THE GRAMA 8817 16-9 FEDERAL COM #4H PAD 2979.5 FEET TO THE SOUTHWEST CORNER OF THIS LOCATION.

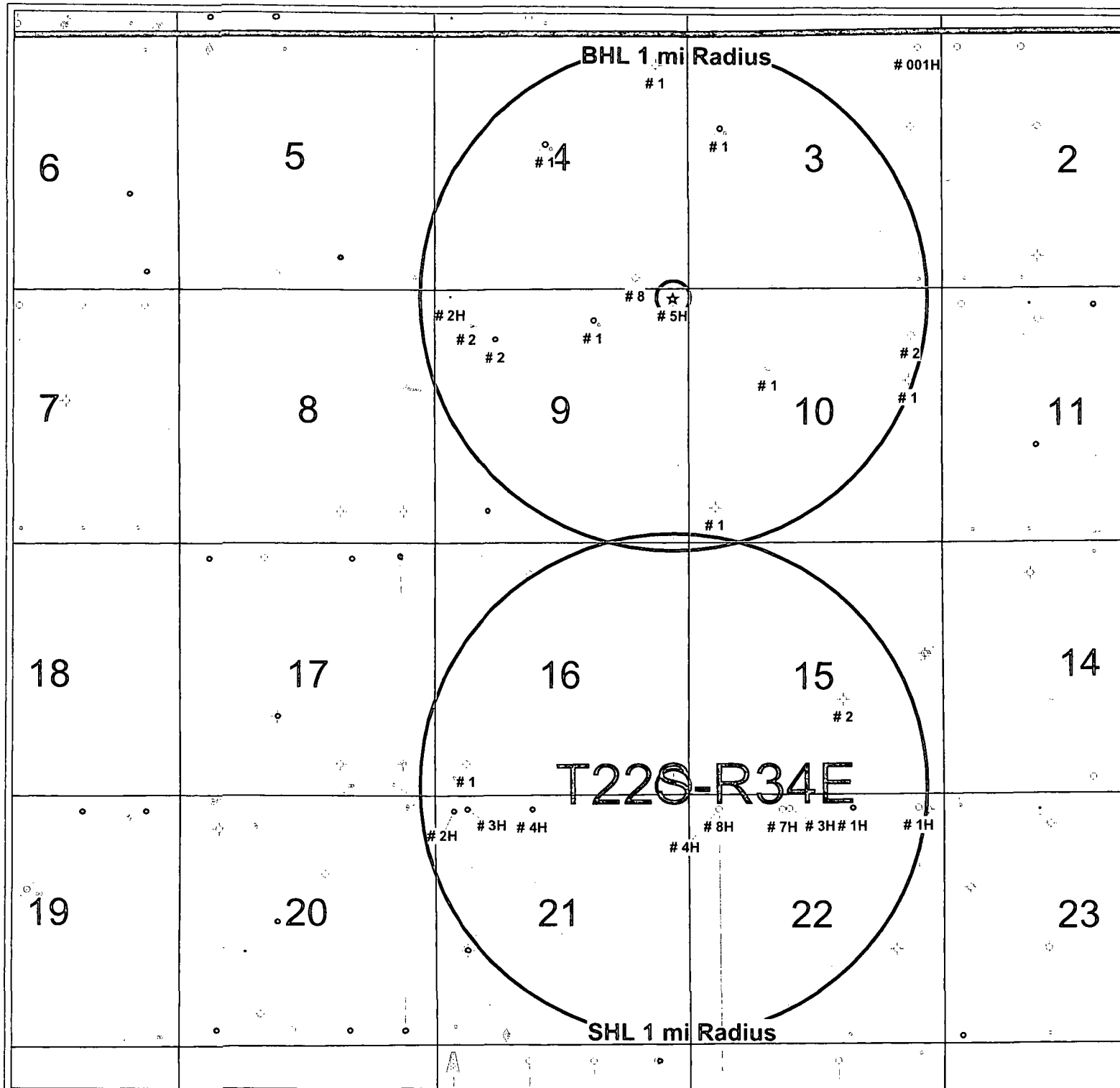
SEC. 16 TWP. 22-S RGE. 34-E  
COUNTY LEA STATE NEW MEXICO  
DESCRIPTION 200' FSL & 330' FEL  
ELEVATION 3479'  
OPERATOR BTA OIL PRODUCERS, LLC  
LEASE GRAMA 8817 16-9 FEDERAL COM  
U.S.G.S. TOPOGRAPHIC MAP  
SAN SIMON RANCH, N.M. SURVEY N.M.P.M.

SCALE: 1" = 5280'

CONTOUR INTERVAL:  
SAN SIMON RANCH, N.M. - 10' / SAN SIMON SINK, N.M. - 10'  
OIL CENTER, N.M. - 10' / EAST LAKE, N.M. - 10'



PROVIDING SURVEYING SERVICES  
SINCE 1946  
**JOHN WEST SURVEYING COMPANY**  
412 N. DAL PASO HOBBS, N.M. 88240  
(575) 393-3117 [www.jwscbiz](http://www.jwscbiz)  
TBPLS# 10021000



**BTA Oil Producers, LLC**

**Grama 8817 16-9 Fed Com #5H - Radius Map**

SHL:200'FSL & 330'FEL Sec.16, T22S-R34E

BHL:200'FNL & 330'FEL Sec.9, T22S-R34E

Lea County, New Mexico

**WELL SYMBOLS**

- ★ Proposed Location
- Location Only
- ⊕ Drilling Well
- ⊕ Drilled, Waiting on Completion
- Oil Well
- ⊕ Gas Well
- ⊕ Dry Hole
- ⊕ Plugged & Abandoned Oil Well
- ⊕ Plugged & Abandoned Gas Well
- ⊕ Junked
- SO Dry Hole With Oil Show
- SO&G Dry Hole With Oil & Gas Show
- ⊕ Gas Injection Well
- ◇ Pilot Hole

**REMARKS**

Grama 8817 16-9 Fed Com #5H Highlighted In Yellow

Surface Hole Location 1 Mile Radius in Red Dash

Bottom Hole Location 1 Mile Radius in Red

By: JHB

0 2,782 5,564

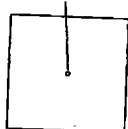
FEET

October 25, 2016

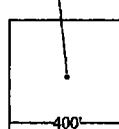
**Grama 8817 16-9 Fed Com #5H - 1mi Radius Well Data**

UWI (APINum)	Operator	Well Name	Well #	Sec	Twp	Rng	Surf Lat	Surf Lon	Bot Lat	Bot Lon	SHL Ftg Calls	TD	Status
3002521336	ENSTOR GRAMA RIDGE	STATE GRA	1	3	22S	34E	32.4224584	-103.4637179	0	0	1980'FNL & 660'FWL	13257	ACTIVE
3002543425	MEWBOURNE OIL CO	RAM 3 B3PA STATE COM	001H	3	22S	34E	32.4138086	-103.4504105	32.4270769	-103.4503691	185'FSL & 500'FEL		ACTIVE
3002508471	HUMBLE OIL & REFG CO	FAYE M SAUNDEPERMIT	1	4	22S	34E	32.4260777	-103.4679918	0	0	660'FNL & 660'FEL	4140	DRY
3002521334	ENSTOR GRAMA RIDGE	FEDERAL GR-4	1	4	22S	34E	32.4215552	-103.4754644	0	0	2310'FNL & 2310'FWL	14870	ACTIVE
3002539922	ENSTOR GRAMA RIDGE	GRAMA RIDGE MORROW UNIT	8	4	22S	34E	32.4136344	-103.4692613	32.4138764	-103.4694568	126'FSL & 1048'FEL	13460	ACTIVE
3002508475	HUMBLE OIL & REFG CO	SAUNDERS	2	9	22S	34E	32.4114328	-103.4808712	0	0	660'FNL & 660'FWL	4265	DRY
3002530686	ENSTOR GRAMA RIDGE	GRAMA RIDGE FEDERAL 8817 JV-P	1	9	22S	34E	32.4114635	-103.4722874	0	0	660'FNL & 1980'FEL	13350	ACTIVE
3002530884	BTA OIL PRODUCERS, LLC	GRAMA RIDGE FEDERAL	2	9	22S	34E	32.410379	-103.4788895	0	0	1046'FNL & 1273'FWL	13375	INACTIVE
3002508476	HUDSON & HUDSON	MILLER-FEDERAL	1	10	22S	34E	32.40073	-103.46414	0	0	660'FSL & 660'FWL	4310	DRY
3002508477	HUDSON & HUDSON	ALLISON-FEDERAL	1	10	22S	34E	32.40803	-103.45109	0	0	1980'FNL & 660'FEL	4128	DRY
3002521719	EOG RESOURCES INC	GOVERNMENT A	1	10	22S	34E	32.4087653	-103.4605344	0	0	1650'FNL & 1650'FWL	13400	INACTIVE
3002528442	EOG RESOURCES INC	GOVERNMENT A	2	10	22S	34E	32.4105792	-103.4509448	0	0	990'FNL & 660'FEL	13450	ACTIVE
3002524780	AMERCN QUASAR PETRO	OJO CHISO UNIT	2	15	22S	34E	32.3896835	-103.4555486	0	0	1980'FSL & 2080'FEL	13575	DRY
3002534628	BTA OIL PRODUCERS, LLC	8817 JV-P GRAMA C	1	16	22S	34E	32.3860322	-103.4809786	0	0	660'FSL & 660'FWL	13391	ACTIVE
3002543426	BTA OIL PRODUCERS, LLC	GRAMA 8817 JV-P FED COM	2H	16	22S	34E	32.385229	-103.48183	32.4128148	-103.4819657	330'FSL & 380'FWL	20168	ACTIVE
	BTA OIL PRODUCERS, LLC	GRAMA 8817 16-9 FED COM	5H	16	22S	34E	32.3847809	-103.4670397	32.4127466	-103.4669371	200'FSL & 330'FEL		REC-LOC
3002540626	DEVON ENERGY PROD	GAUCHO 21 FEDERAL	2H	21	22S	34E	32.3708429	-103.4818102	32.3832931	-103.4818675	375'FSL & 375'FWL	12600	ACTIVE
3002542136	DEVON ENERGY PROD	GAUCHO 21 FEDERAL	3H	21	22S	34E	32.370362	-103.478325	32.3834112	-103.4809202	200'FSL & 1450'FWL	14917	ACTIVE
3002542137	DEVON ENERGY PROD	GAUCHO 21 FEDERAL	4H	21	22S	34E	32.370362	-103.4781631	32.3833835	-103.4766301	200'FSL & 1500'FWL	14890	ACTIVE
3002542288	MEWBOURNE OIL CO	PERRO LOCO 22 B3OB FEDERAL	1H	22	22S	34E	32.3703402	-103.4551886	32.3834244	-103.455046	185'FSL & 1980'FEL	15630	ACTIVE
3002543164	COG OPERATING LLC	SQUINTS FEDERAL COM	4H	27	22S	34E	32.3557847	-103.4637599	32.3833807	-103.4639516	190'FSL & 660'FWL		ACTIVE
3002543166	COG OPERATING LLC	SQUINTS FEDERAL COM	3H	27	22S	34E	32.355819	-103.459593	32.383421	-103.45919	190'FSL & 1980'FWL		ACTIVE
3002543167	COG OPERATING LLC	SQUINTS FEDERAL COM	7H	27	22S	34E	32.3557692	-103.4593884	32.3833701	-103.4596767	190'FSL & 2010'FWL		ACTIVE
3002543168	COG OPERATING LLC	SQUINTS FEDERAL COM	8H	27	22S	34E	32.3557844	-103.4636627	32.3833798	-103.4639516	190'FSL & 690'FWL		ACTIVE
3002543393	MEWBOURNE OIL CO	PERRO LOCO 22 B3PA FED	1H	27	22S	34E	32.3692904	-103.4503999	32.3834558	-103.450499	200'FNL & 500'FEL		ACTIVE

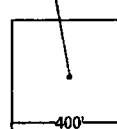
GRAMA 8817 16-9 FED COM #2H  
CENTRAL TANK BATTERY  
NAD 83 NME  
LAT.=32.385353°  
LONG.=103.482312°



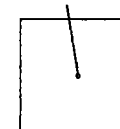
GRAMA 8817 16-9 FED COM #3H  
NAD 83 NME  
LAT.=32.385007°  
LONG.=103.477130°



GRAMA 8817 16-9 FED COM #4H  
NAD 83 NME  
LAT.=32.385007°  
LONG.=103.472821°



GRAMA 8817 16-9 FED COM #5H  
NAD 83 NME  
LAT.=32.384996°  
LONG.=103.467478°



1298.3'

400'

930.3'

400'

1249.11'

**BTA OIL PRODUCERS, LLC**

**GRAMA 8817 16-9 FED COM LEASE  
PROPOSED FLOWLINE PLAT**

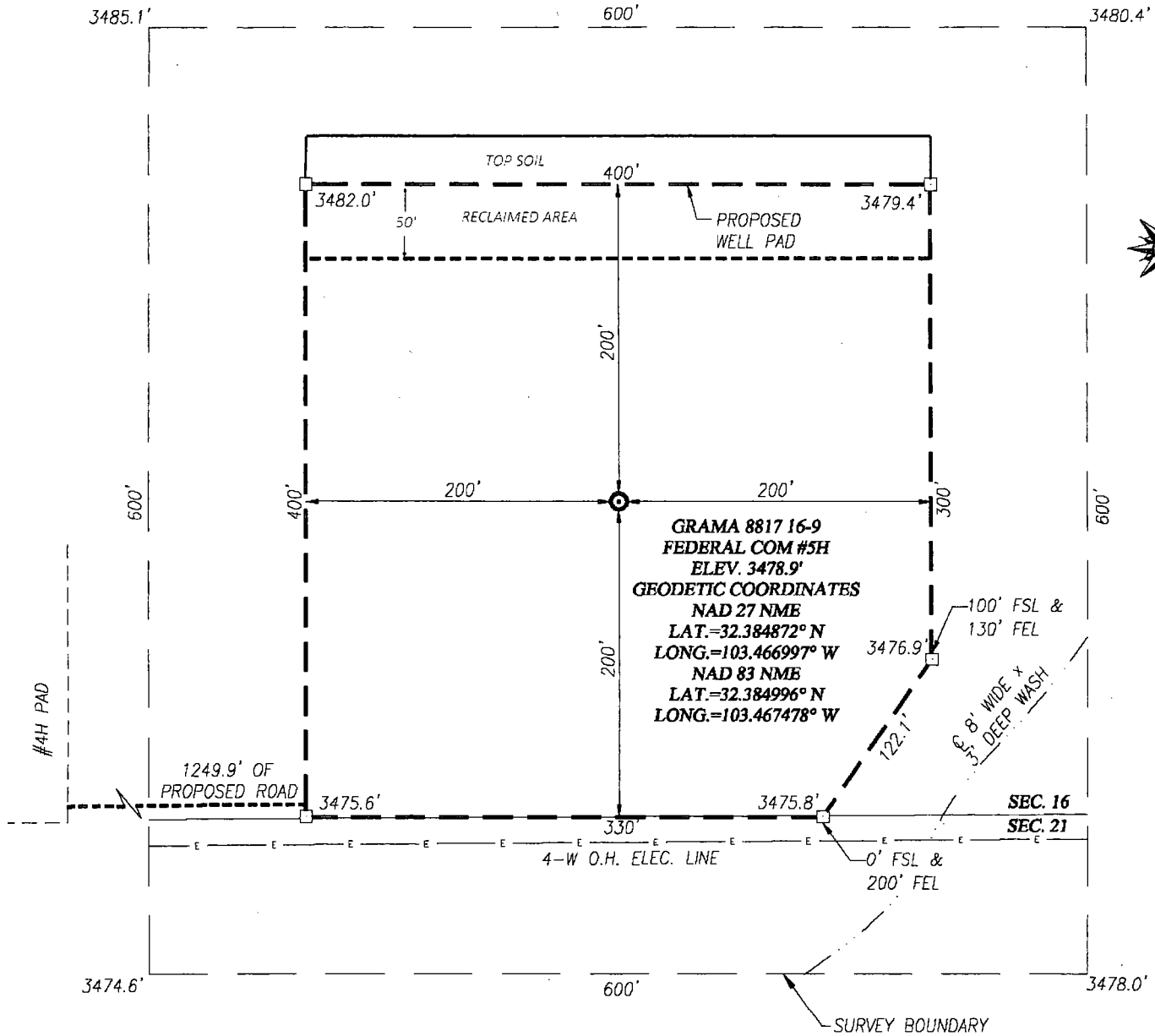
SECTION 16, T22S, R34E  
LEA COUNTY, NEW MEXICO

BTA OIL PRODUCERS, LLC  
WATER SOURCE AND TRANSPORTATION MAP  
GRAMA 8817 16-9 FED COM #5H  
SECTION 16, T22S-R34E



Penwell Energy  
WR 00878

# WELL SITE PLAN

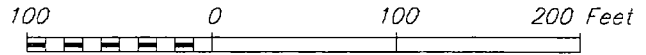


## DIRECTIONS TO THIS LOCATION:

FROM THE INTERSECTION OF ST. HWY. 207 AND ST. HWY. 176 TEXAS ST. IN EUNICE GO SOUTH APPROX. 2.5 MILES, TURN RIGHT AND GO WEST ON CO. RD. E21(DELAWARE BASIN) APPROX. 23.4 MILES, TURN RIGHT AND GO NORTH APPROX. 2.5 MILES, ROAD BENDS LEFT CONTINUE NORTHWEST APPROX. 1.0 MILE, ROAD BENDS LEFT GO NORTHEAST APPROX. 0.6 MILES, TURN LEFT AND GO NORTHWEST APPROX. 0.5 MILES TO ROAD INT. TURN RIGHT AND GO NORTHEAST APPROX. 0.7 MILES, TURN RIGHT AND GO SOUTH APPROX. 0.5 MILES, TURN LEFT AND GO EAST APPROX. 350 FEET TO GRAMA 8817 16-9 FEDERAL COM #2H WELL PAD. FROM THE SOUTHEAST CORNER FOLLOW PROPOSED ROAD SURVEY SOUTHEAST 125 FEET, THEN EAST 1173 FEET TO THE SOUTHWEST CORNER OF GRAMA 8817 16-9 FEDERAL COM #3H WELL PAD, FROM THE SOUTHEAST CORNER OF GRAMA 8817 16-9 FEDERAL COM #3H WELL PAD, FOLLOW ROAD SURVEY EAST CROSSING THE GRAMA 8817 16-9 FEDERAL COM #4H PAD 2979.5 FEET TO THE SOUTHWEST CORNER OF THIS LOCATION.

## NOTE:

SEE "TOPOGRAPHICAL AND ACCESS ROAD MAP" FOR PROPOSED ROAD LOCATION.



Scale: 1"=100'

## BTA OIL PRODUCERS, LLC

GRAMA 8817 16-9 FEDERAL COM #5H WELL LOCATED 200 FEET FROM THE SOUTH LINE AND 330 FEET FROM THE EAST LINE OF SECTION 16, TOWNSHIP 22 SOUTH, RANGE 34 EAST, N.M.P.M., LEA COUNTY, NEW MEXICO



PROVIDING SURVEYING SERVICES  
SINCE 1946  
**JOHN WEST SURVEYING COMPANY**  
412 N. DAL PASO HOBBS, N.M. 88240  
(575) 393-3117 www.jwsc.biz  
TBPLS# 10021000

Survey Date: 9/28/16

CAD Date: 11/10/16

Drawn By: ACK

W.O. No.: 16110857

Rev: .

Rel. W.O.: 16110714

Sheet 1 of 1



U.S. Department of the Interior  
BUREAU OF LAND MANAGEMENT

PWD Data Report

06/07/2017

## Section 1 - General

Would you like to address long-term produced water disposal? NO

## Section 2 - Lined Pits

Would you like to utilize Lined Pit PWD options? NO

Produced Water Disposal (PWD) Location:

PWD surface owner:

PWD disturbance (acres):

Lined pit PWD on or off channel:

Lined pit PWD discharge volume (bbl/day):

Lined pit specifications:

Pit liner description:

Pit liner manufacturers information:

Precipitated solids disposal:

Describe precipitated solids disposal:

Precipitated solids disposal permit:

Lined pit precipitated solids disposal schedule:

Lined pit precipitated solids disposal schedule attachment:

Lined pit reclamation description:

Lined pit reclamation attachment:

Leak detection system description:

Leak detection system attachment:

Lined pit Monitor description:

Lined pit Monitor attachment:

Lined pit: do you have a reclamation bond for the pit?

Is the reclamation bond a rider under the BLM bond?

Lined pit bond number:

Lined pit bond amount:

Additional bond information attachment:



### **Section 3 - Unlined Pits**

Would you like to utilize Unlined Pit PWD options? NO

Produced Water Disposal (PWD) Location:

PWD surface owner:

PWD disturbance (acres):

Unlined pit PWD on or off channel:

Unlined pit PWD discharge volume (bbl/day):

Unlined pit specifications:

Precipitated solids disposal:

Describe precipitated solids disposal:

Precipitated solids disposal permit:

Unlined pit precipitated solids disposal schedule:

Unlined pit precipitated solids disposal schedule attachment:

Unlined pit reclamation description:

Unlined pit reclamation attachment:

Unlined pit Monitor description:

Unlined pit Monitor attachment:

Do you propose to put the produced water to beneficial use?

Beneficial use user confirmation:

Estimated depth of the shallowest aquifer (feet):

Does the produced water have an annual average Total Dissolved Solids (TDS) concentration equal to or less than that of the existing water to be protected?

TDS lab results:

Geologic and hydrologic evidence:

State authorization:

Unlined Produced Water Pit Estimated percolation:

Unlined pit: do you have a reclamation bond for the pit?

Is the reclamation bond a rider under the BLM bond?

Unlined pit bond number:

Unlined pit bond amount:

Additional bond information attachment:

### **Section 4 - Injection**

Would you like to utilize Injection PWD options? NO

Produced Water Disposal (PWD) Location:

PWD surface owner:

PWD disturbance (acres):

Injection PWD discharge volume (bbl/day):

Injection well mineral owner:

Injection well type:

Injection well number:

Injection well name:

Assigned injection well API number?

Injection well API number:

Injection well new surface disturbance (acres):

Minerals protection information:

Mineral protection attachment:

Underground Injection Control (UIC) Permit?

UIC Permit attachment:

### **Section 5 - Surface Discharge**

Would you like to utilize Surface Discharge PWD options? NO

Produced Water Disposal (PWD) Location:

PWD surface owner:

PWD disturbance (acres):

Surface discharge PWD discharge volume (bbl/day):

Surface Discharge NPDES Permit?

Surface Discharge NPDES Permit attachment:

Surface Discharge site facilities information:

Surface discharge site facilities map:

### **Section 6 - Other**

Would you like to utilize Other PWD options? NO

Produced Water Disposal (PWD) Location:

PWD surface owner:

PWD disturbance (acres):

Other PWD discharge volume (bbl/day):

Other PWD type description:

Other PWD type attachment:

Have other regulatory requirements been met?

Other regulatory requirements attachment:



U.S. Department of the Interior  
BUREAU OF LAND MANAGEMENT

## Bond Info Data Report

06/07/2017

### Bond Information

Federal/Indian APD: FED

BLM Bond number: NMB000849

BIA Bond number:

Do you have a reclamation bond? NO

Is the reclamation bond a rider under the BLM bond?

Is the reclamation bond BLM or Forest Service?

BLM reclamation bond number:

Forest Service reclamation bond number:

Forest Service reclamation bond attachment:

Reclamation bond number:

Reclamation bond amount:

Reclamation bond rider amount:

Additional reclamation bond information attachment: