

DISTRICT I  
1825 N. French Dr., Hobbs, NM 88240  
Phone (575) 393-8161 Fax: (575) 393-0720

DISTRICT II  
811 S. First St., Artesia, NM 88210  
Phone (505) 748-1283 Fax: (505) 748-9720

DISTRICT III  
1000 Rio Brazos Rd., Aztec, NM 87410  
Phone (505) 334-8178 Fax: (505) 334-8170

DISTRICT IV  
1220 S. St. Francis Dr., Santa Fe, NM 87505  
Phone (505) 478-3480 Fax: (505) 478-3482

State of New Mexico  
Energy, Minerals and Natural Resources Department

OIL CONSERVATION DIVISION

1220 South St. Francis Dr.  
Santa Fe, New Mexico 87505

Form C-102  
Revised August 1, 2011

Submit one copy to appropriate  
District Office

LOCATION AND ACREAGE DEDICATION PLAT

☐ AMENDED REPORT

API Number 30-025-41638	Pool Code 96682	Pool Name TRISTE DRAW: BONESPRING, EAST
Property Code	Property Name CARAVAN BVX STATE	Well Number 11H
OGRID No. 7377	Operator Name EOG RESOURCES, INC	Elevation 3481

Surface Location

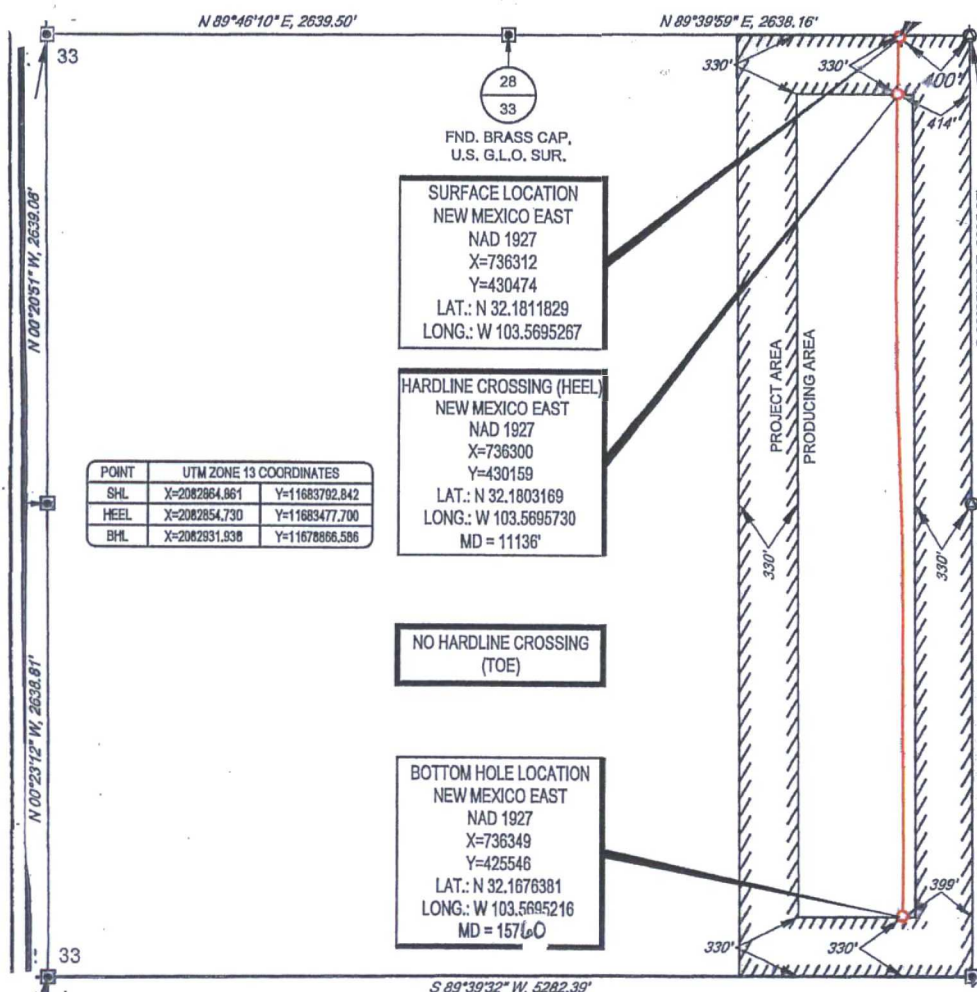
UL or lot No.	Section	Township	Range	Lot Idn	Feet from the	North/South line	Feet from the	East/EAST line	County
A	33	24 S	33 E		15	NORTH	400	EAST	LEA

Bottom Hole Location If Different From Surface

UL or lot No.	Section	Township	Range	Lot Idn	Feet from the	North/South line	Feet from the	East/EAST line	County
P	33	24 S	33 E		330	SOUTH	399	EAST	LEA

Dedicated Acres	Joint or Infill	Consolidation Code	Order No.
160			

NO ALLOWABLE WILL BE ASSIGNED TO THIS COMPLETION UNTIL ALL INTERESTS HAVE BEEN CONSOLIDATED  
OR A NON-STANDARD UNIT HAS BEEN APPROVED BY THE DIVISION



<b>OPERATOR CERTIFICATION</b> I hereby certify that the information contained herein is true and complete to the best of my knowledge and belief, and that this organization either owns a working interest or undivided mineral interest in the land including the proposed bottom hole location or has a right to drill this well at this location pursuant to a contract with an owner of such a mineral or working interest, or to a voluntary pooling agreement or a compulsory pooling order heretofore entered by the state. <i>Kay Maddox</i> Signature Kay Maddox Printed Name Kay-Maddox@ecogresources.com Email Address	
<b>SURVEYOR CERTIFICATION</b> I hereby certify that the well location shown on this plat was plotted from field notes of actual surveys made by me or under my supervision, and that the same is true and correct to the best of my belief. OCTOBER 18, 2013 Date Surveyed <i>[Signature]</i> Signature & Seal of Professional Surveyor Certificate No. 7977 BASIC SURVEY	
0' 500' 1000' 1500' 2000' SCALE: 1" = 1000' WO Num.: 29408	