

DISTRICT I
1625 N. French Dr., Hobbs, NM 88240
Phone (575) 393-6161 Fax: (575) 393-0720

DISTRICT II
811 S. First St., Artesia, NM 88210
Phone (575) 748-1283 Fax: (575) 748-9720

DISTRICT III
1000 Rio Brazos Rd., Aztec, NM 87410
Phone (505) 334-8178 Fax: (505) 334-6170

DISTRICT IV
1220 S. St. Francis Dr., Santa Fe, NM 87505
Phone (505) 476-3333 Fax: (505) 476-3462

State of New Mexico
Energy, Minerals and Natural Resources Department

OIL CONSERVATION DIVISION
1220 South St. Francis Dr.
Santa Fe, New Mexico 87505

Form C-102
Revised August 1, 2011

Submit one copy to appropriate
District Office

HOBBS OCD
JUL 10 2017
RECEIVED

WELL LOCATION AND ACREAGE DEDICATION PLAT

☐ AMENDED REPORT

API Number 30-025-43890	Pool Code 27810	Pool Name Gladiola; San Andres
Property Code 718326	Property Name DECKER	Well Number 1H
OGRID No. 138008	Operator Name SPECIAL ENERGY CORPORATION	Elevation 3874'

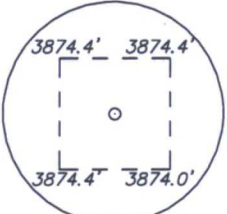
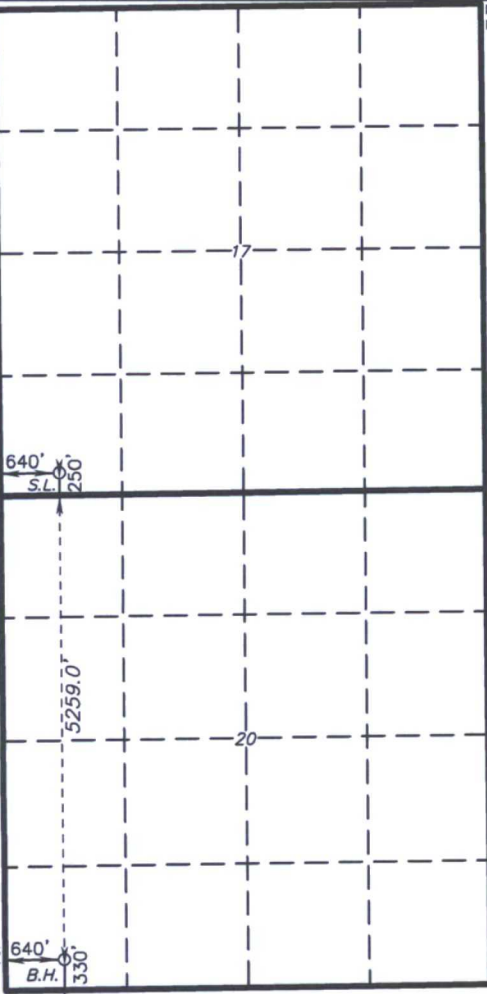
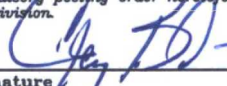
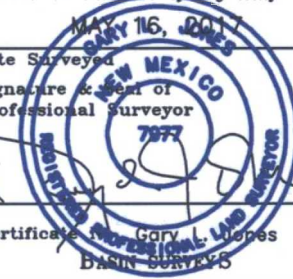
Surface Location

UL or lot No.	Section	Township	Range	Lot Idn	Feet from the	SOUTH/South line	Feet from the	East/West line	County
M	17	12 S	38 E		250	SOUTH	640	WEST	LEA

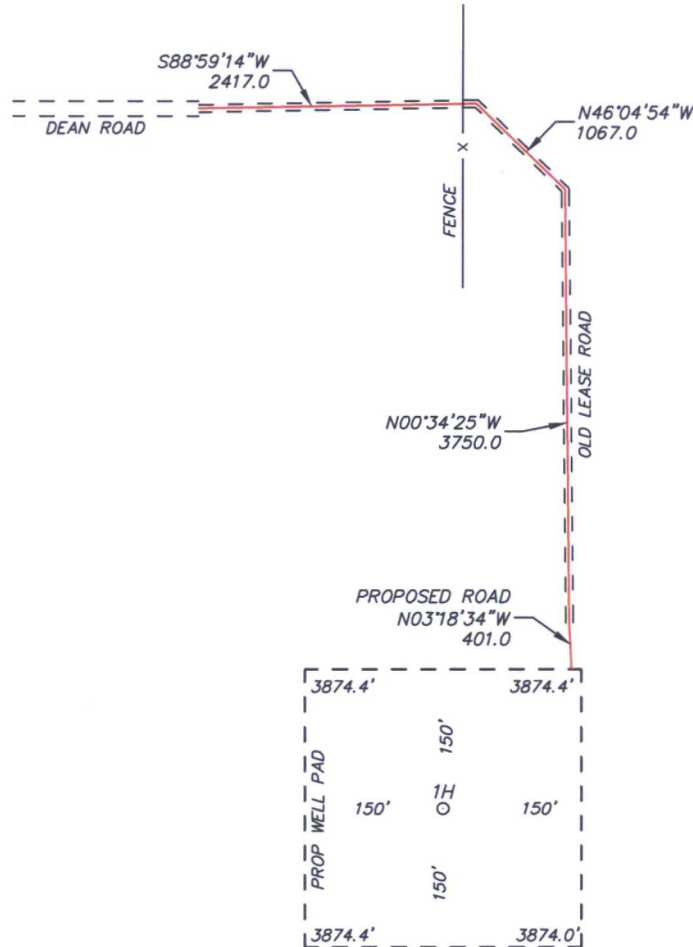
Bottom Hole Location If Different From Surface

UL or lot No.	Section	Township	Range	Lot Idn	Feet from the	SOUTH/South line	Feet from the	East/West line	County
M	20	12 S	38 E		330	SOUTH	640	WEST	LEA
Dedicated Acres 160	Joint or Infill N	Consolidation Code F	Order No. PENDING						

NO ALLOWABLE WILL BE ASSIGNED TO THIS COMPLETION UNTIL ALL INTERESTS HAVE BEEN CONSOLIDATED
OR A NON-STANDARD UNIT HAS BEEN APPROVED BY THE DIVISION

<p>N: 833712.4 E: 909673.3 (NAD83)</p>  <p>SURFACE LOCATION Lat - N 33.272153 Long - W 103.125910 NMSPCE - N 828688.3 E 910375.5 (NAD-83)</p> <p>N: 828429.5 E: 909738.7 (NAD83)</p> <p>BOTTOM HOLE LOCATION Lat - N 33.257701 Long - W 103.125945 NMSPCE - N 823429.6 E 910425.5 (NAD-83)</p> <p>N: 823091.5 E: 909788.7 (NAD83)</p>	 <p>640' 330'</p> <p>640' 330'</p>	<p>N: 833761.4 E: 914954.9 (NAD83)</p> <p>N: 828501.4 E: 915008.2 (NAD83)</p> <p>N: 823158.8 E: 915062.9 (NAD83)</p>	<p>OPERATOR CERTIFICATION</p> <p>I hereby certify that the information contained herein is true and complete to the best of my knowledge and belief, and that this organization either owns a working interest or undivided mineral interest in the land including the proposed bottom hole location or has a right to drill this well at this location pursuant to a contract with an owner of such a mineral or working interest, or to a voluntary pooling agreement or a compulsory pooling order heretofore entered by the division.</p> <p>Signature  Date 7-7-17</p> <p>Gary Bond</p> <p>Printed Name gary.bond@specialenergycorp.com</p> <p>Email Address</p> <p>SURVEYOR CERTIFICATION</p> <p>I hereby certify that the well location shown on this plat was plotted from field notes of actual surveys made by me or under my supervision, and that the same is true and correct to the best of my belief.</p> <p>Date Surveyed MAY 16, 2017</p> <p>Signature & Seal of Professional Surveyor </p> <p>Certificate No. Gary Bond 7977 BASIN SURVEYS</p> <p>0' 500' 1000' 1500' 2000'</p> <p>SCALE: 1" = 1000'</p> <p>WO Num.: 32936</p>
--------------------------------------------------------------------------------------------------------------------------------------------------------------------------------------------------------------------------------------------------------------------------------------------------------------------------------------------------------------------------------------------------------------------------------------------------------------------------------------------------------	----------------------------------------------------------------------------------------------------------------------	----------------------------------------------------------------------------------------------------------------------------------------------	-------------------------------------------------------------------------------------------------------------------------------------------------------------------------------------------------------------------------------------------------------------------------------------------------------------------------------------------------------------------------------------------------------------------------------------------------------------------------------------------------------------------------------------------------------------------------------------------------------------------------------------------------------------------------------------------------------------------------------------------------------------------------------------------------------------------------------------------------------------------------------------------------------------------------------------------------------------------------------------------------------------------------------------------------------------------------------------------------------------------------------------------------------------------------------------------------------------------------------------------------------------------------------------------------------------------------------------------------------------

SECTION 17, TOWNSHIP 12 SOUTH, RANGE 38 EAST. N.M.P.M.,
LEA COUNTY, NEW MEXICO.

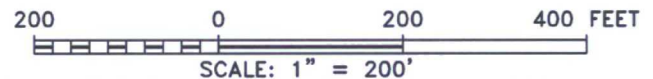


SPECIAL ENERGY CORPORATION
DECKER 1H
ELEV. - 3874'
Lat - N 33.272153
Long - W 103.125910
NMSPCE- N 828688.3
E 910375.5
(NAD-83)

Directions to Location:

AT THE INTERSECTION OF US-380 AND COUNTY ROAD 168 (SHULTS ROAD) GO NORTH ON SHULTS 2.0 MILES, THEN EAST ON DEAN ROAD 0.5 MILES TO END OF PAVEMENT.

TATUM, NM IS ±11 MILES TO THE SOUTHWEST OF LOCATION.



SPECIAL ENERGY CORPORATION

REF: DECKER 1H / WELL PAD TOPO

THE DECKER 1H LOCATED 250' FROM
THE SOUTH LINE AND 640' FROM THE WEST LINE OF
SECTION 17, TOWNSHIP 12 SOUTH, RANGE 38 EAST.

N.M.P.M., LEA COUNTY, NEW MEXICO.

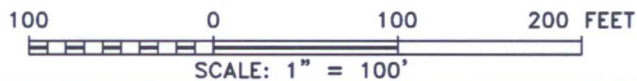
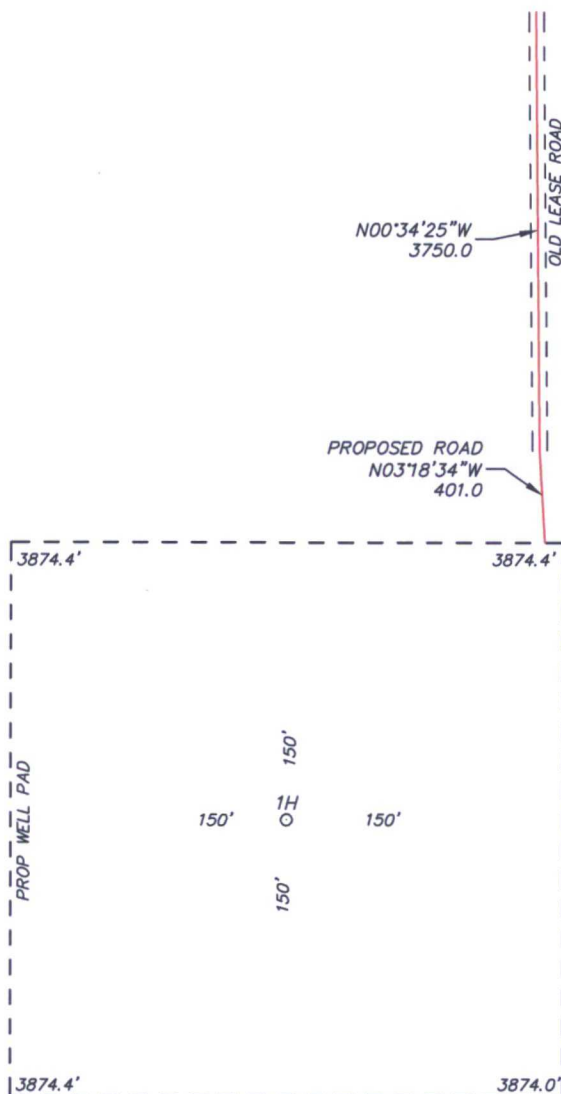


focused on excellence
in the oilfield

P.O. Box 1786
1120 N. West County Rd.
Hobbs, New Mexico 88241

(575) 393-7316 - Office
(575) 392-2206 - Fax
basinsurveys.com

SECTION 17, TOWNSHIP 12 SOUTH, RANGE 38 EAST. N.M.P.M.,
LEA COUNTY, NEW MEXICO.



SPECIAL ENERGY CORPORATION

REF: DECKER 1H / WELL PAD TOPO

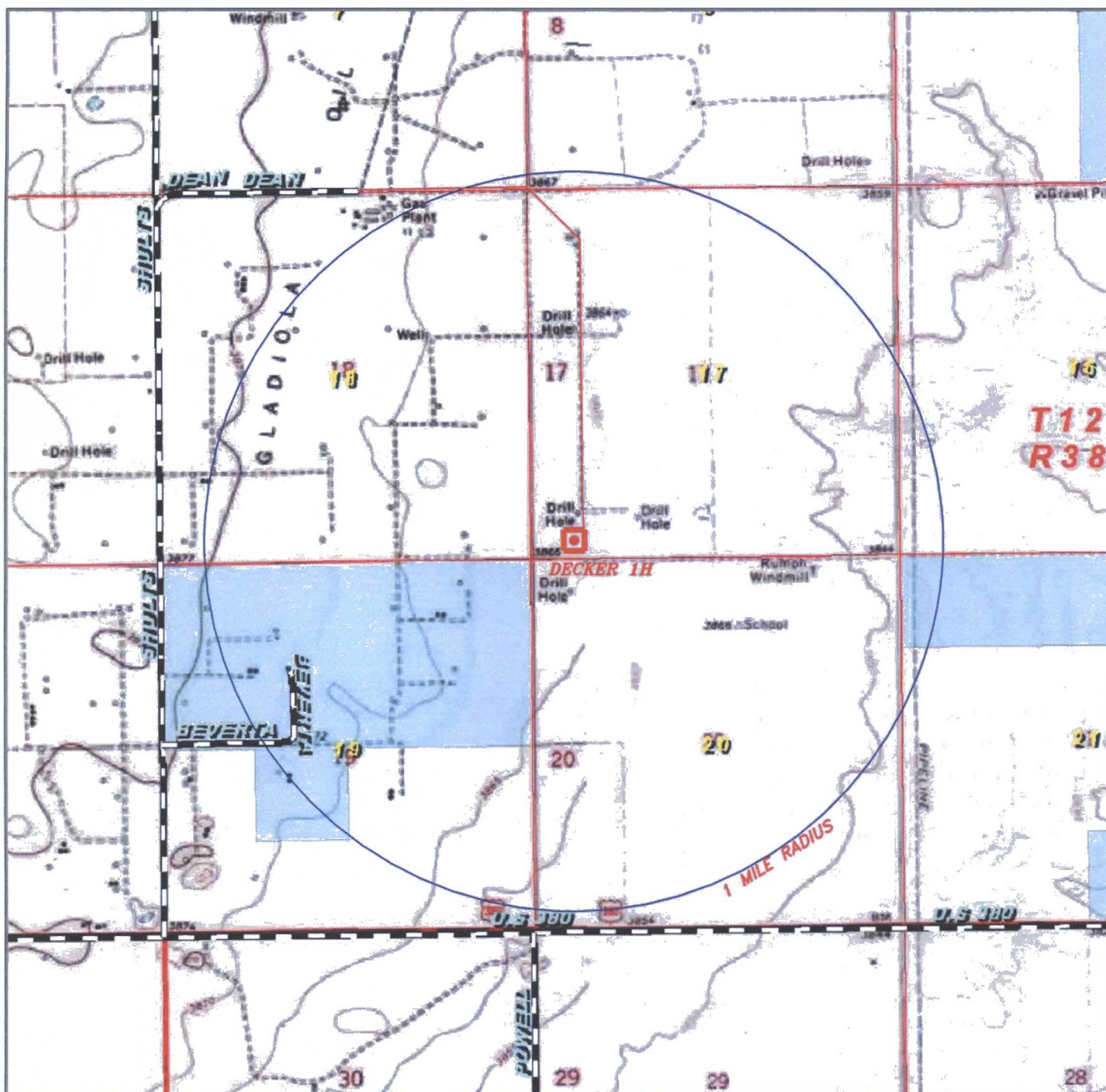
THE DECKER 1H LOCATED 250' FROM
THE SOUTH LINE AND 640' FROM THE WEST LINE OF
SECTION 17, TOWNSHIP 12 SOUTH, RANGE 38 EAST.

N.M.P.M., LEA COUNTY, NEW MEXICO.



P.O. Box 1786 (575) 393-7316 - Office
1120 N. West County Rd. (575) 392-2206 - Fax
Hobbs, New Mexico 88241 basin-surveys.com

W.O. Number: 32936	Drawn By: J GOAD	Date: 5-16-2017	Survey Date: 5-4-2017	Sheet 1 of 1 Sheets
--------------------	------------------	-----------------	-----------------------	---------------------



DECKER 1H

Located 250' FSL and 640' FWL
 Section 17, Township 12 South, Range 38 East,
 N.M.P.M., Lea County, New Mexico.

**basin
surveys**
 focused on excellence
 in the oilfield

P.O. Box 1786
 1120 N. West County Rd.
 Hobbs, New Mexico 88241
 (575) 393-7316 - Office
 (575) 392-2206 - Fax
 basinsurveys.com

0' 1000' 2000' 3000' 4000'
 SCALE: 1" = 2000'

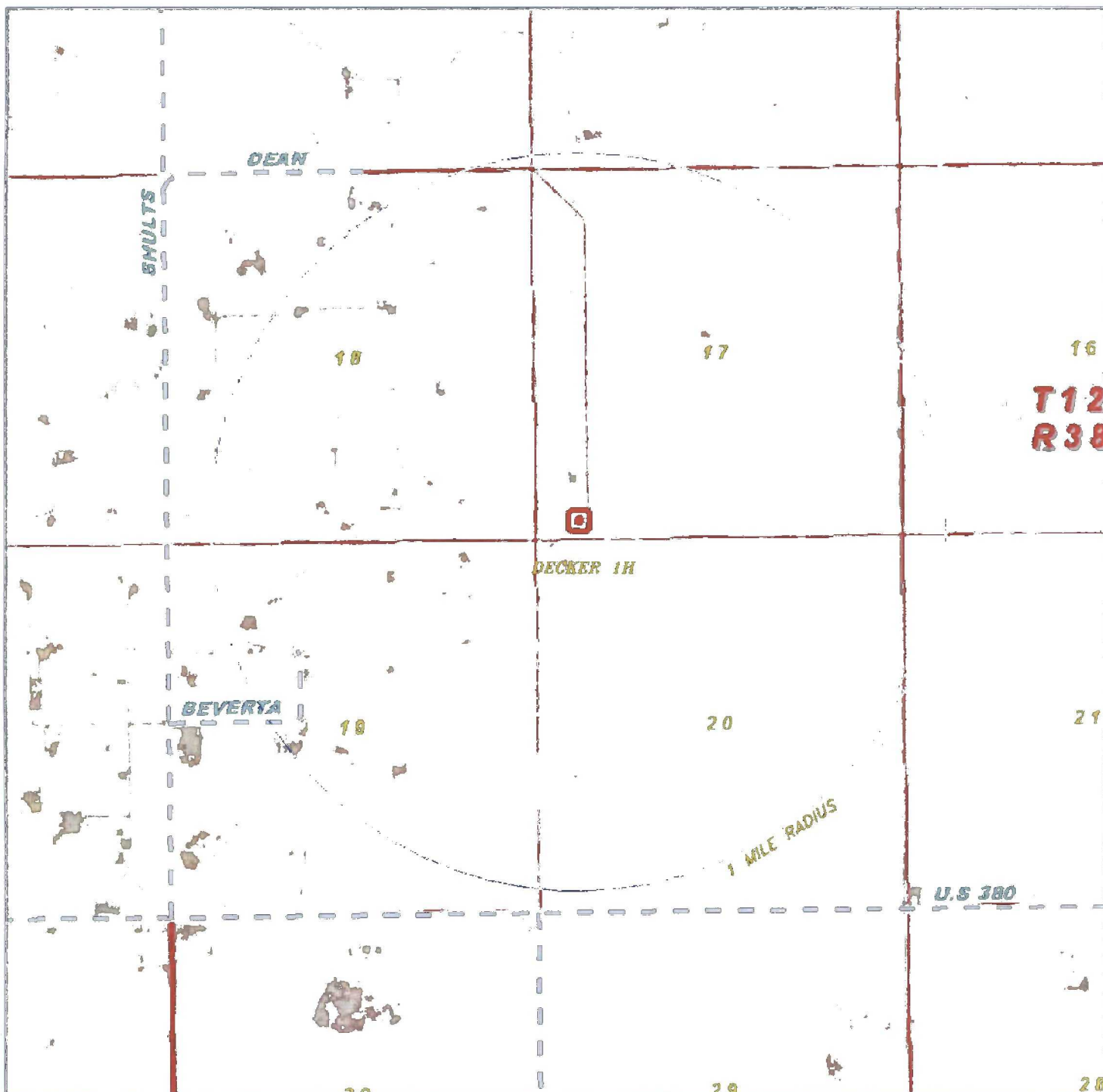
W.O. Number: JG 32936

Survey Date: 5-4-2017

YELLOW TINT - USA LAND
 BLUE TINT - STATE LAND
 NATURAL COLOR - FEE LAND



SPECIAL ENERGY
 CORPORATION



DECKER 1H

Located 250' FSL and 640' FWL
 Section 17, Township 12 South, Range 38 East,
 N.M.P.M., Lea County, New Mexico.

basin
surveys
 focused on excellence
 in the oilfield

P.O. Box 1786
 1120 N. West County Rd.
 Hobbs, New Mexico 88241
 (575) 393-7316 - Office
 (575) 392-2206 - Fax
 basinsurveys.com

0' 1000' 2000' 3000' 4000'

SCALE: 1" = 2000'

W.O. Number: JG 32936

Survey Date: 5-4-2017

YELLOW TINT - USA LAND
 BLUE TINT - STATE LAND
 NATURAL COLOR - FEE LAND



SPECIAL ENERGY
 CORPORATION