

Casing Program

Hole Size	Casing Interval		Csg. Size	Weight (lbs)	Grade	Conn.	SF Collapse	SF Burst	SF Tension
	From	To							
17.5"	0	1625	13.375"	54.5	J55	STC	1.52	4.78	5.80
12.25"	0	5255	9.625"	40	J55	LTC	1.08	0.94	2.47
8.75"	0	20,876	5.5"	17	P110	LTC	1.41	2.52	2.41
BLM Minimum Safety Factor							1.125	1	1.6 Dry 1.8 Wet

Intermediate casing will be kept at least 1/3 full while running casing to mitigate collapse. Intermediate burst based on 0.7 frac gradient at the shoe with Gas Gradient 0.1 psi/ft to surface.
All casing strings will be tested in accordance with Onshore Oil and Gas Order #2 III.B.1.h

1. Geologic Formations

TVD of target	10,850' EOL	Pilot hole depth	NA
MD at TD:	20,876'	Deepest expected fresh water:	630'

Formation	Depth (TVD) from KB	Water/Mineral Bearing/ Target Zone?	Hazards*
Quaternary Fill	Surface	Water	
Rustler	1550	Water	
Top of Salt	1650	Salt	
Base of Salt	3580	Salt	
Yates	3740	Salt Water	
Capitan Reef	3750	Salt Water	
Base of Reef/ BLCN	5230	Oil/Gas	
Cherry Canyon	5970	Oil/Gas	
Bone Spring Lime	8841	Oil/Gas	
U. Avalon Shale	8992	Oil/Gas	
L. Avalon Shale	9320	Oil/Gas	
1st Bone Spring Sand	9948	Oil/Gas	
2nd Bone Spring Sand	10550	Target Oil/Gas	
3rd Bone Spring Sand	11700	Not Penetrated	
Wolfcamp	X	Not Penetrated	

2. Casing Program

Hole Size	Casing Interval		Csg. Size	Weight (lbs)	Grade	Conn.	SF Collapse	SF Burst	SF Tension
	From	To							
17.5"	0	1625	13.375"	54.5	J55	STC	1.52	4.78	5.80
12.25"	0	5255	9.625"	40	J55	LTC	1.08	0.94	2.47
8.75"	0	20,876	5.5"	17	P110	LTC	1.41	2.52	2.41
BLM Minimum Safety Factor							1.125	1	1.6 Dry 1.8 Wet

Intermediate casing will be kept at least 1/3 full while running casing to mitigate collapse. Intermediate burst based on 0.7 frac gradient at the shoe with Gas Gradient 0.1 psi/ft to surface.

All casing strings will be tested in accordance with Onshore Oil and Gas Order #2 III.B.1.h

COG Operating, LLC - Tenderloin Federal 4H

	Y or N
Is casing new? If used, attach certification as required in Onshore Order #1	Y
Does casing meet API specifications? If no, attach casing specification sheet.	Y
Is premium or uncommon casing planned? If yes attach casing specification sheet.	N
Does the above casing design meet or exceed BLM's minimum standards? If not provide justification (loading assumptions, casing design criteria).	Y
Will the intermediate pipe be kept at a minimum 1/3 fluid filled to avoid approaching the collapse pressure rating of the casing?	Y
Is well located within Capitan Reef?	Y
If yes, does production casing cement tie back a minimum of 50' above the Reef?	Y
Is well within the designated 4 string boundary?	N
Is well located in SOPA but not in R-111-P?	N
If yes, are the first 2 strings cemented to surface and 3 rd string cement tied back 500' into previous casing?	
Is well located in R-111-P and SOPA?	N
If yes, are the first three strings cemented to surface?	
Is 2 nd string set 100' to 600' below the base of salt?	
Is well located in high Cave/Karst?	N
If yes, are there two strings cemented to surface?	
(For 2 string wells) If yes, is there a contingency casing if lost circulation occurs?	
Is well located in critical Cave/Karst?	N
If yes, are there three strings cemented to surface?	

3. Cementing Program

Casing	# Sks	Wt. lb/ gal	Yld ft ³ / sack	H ₂ O gal/sk	500# Comp. Strength (hours)	Slurry Description
Surf.	690	12.7	2.0	9.6	16	Lead: 35:65:6 C Blend
	250	14.8	1.34	6.34	8	Tail: Class C + 2% CaCl
Inter., Stage 1	260	12.7	1.98	10.6	16	Lead: 35:65:6 C Blend
	200	14.8	1.34	6.34	8	Tail: Class C + 2% CaCl
DV/ECP @ 3630						
Inter., Stage 2	640	12.7	2.0	10.6	16	Lead: Class C + 4% Gel + 1% CaCl ₂
	200	14.8	1.35	6.34	8	Tail: Class C + 2% CaCl
5.5 Prod	890	11.9	2.5	19	72	Lead: 50:50:10 H Blend
	2790	14.4	1.24	5.7	19	Tail: 50:50:2 Class H Blend

Volumes Subject to Observed Hole Conditions and/or Fluid Caliper Results

Lab reports with the 500 psi compressive strength time for the cement will be onsite for review.

Casing String	TOC	% Excess
Surface	0'	50%
1 st Intermediate	0'	50%
Production	3,700'	30% OH in Lateral (KOP to EOL) – 40% OH in Vertical

4. Pressure Control Equipment

N	A variance is requested for the use of a diverter on the surface casing. See attached for schematic.
---	---

BOP installed and tested before drilling which hole?	Size?	Min. Required WP	Type	x	Tested to:
12-1/4"	13-5/8"	2M	Annular	x	2000 psi
			Blind Ram		2M
			Pipe Ram		
			Double Ram		
			Other*		
8-3/4"	13-5/8"	3M	Annular	x	50% testing pressure
			Blind Ram	x	3M
			Pipe Ram	x	
			Double Ram		
			Other*		

BOP/BOPE will be tested by an independent service company to 250 psi low and the high pressure indicated above per Onshore Order 2 requirements. The System may be upgraded to a higher pressure but still tested to the working pressure listed in the table above. If the system is upgraded all the components installed will be functional and tested.

Pipe rams will be operationally checked each 24 hour period. Blind rams will be operationally checked on each trip out of the hole. These checks will be noted on the daily tour sheets. Other accessories to the BOP equipment will include a Kelly cock and floor safety valve (inside BOP) and choke lines and choke manifold. See attached schematics.

X	Formation integrity test will be performed per Onshore Order #2. On Exploratory wells or on that portion of any well approved for a 5M BOPE system or greater, a pressure integrity test of each casing shoe shall be performed. Will be tested in accordance with Onshore Oil and Gas Order #2 III.B.1.i.
Y	A variance is requested for the use of a flexible choke line from the BOP to Choke Manifold. See attached for specs and hydrostatic test chart.
N	Are anchors required by manufacturer?
N	A multibowl wellhead is being used. The BOP will be tested per Onshore Order #2 after installation on the surface casing which will cover testing requirements for a maximum of 30 days. If any seal subject to test pressure is broken the system must be tested.

5. Mud Program

Depth		Type	Weight (ppg)	Viscosity	Water Loss
From	To				
0	Surf. Shoe	FW Gel	8.6 - 8.8	28-34	N/C
Surf csg	9-5/8" Int shoe	Saturated Brine	8.3 - 8.7	28-34	N/C
9-5/8" Int shoe	Lateral TD	Cut Brine	8.6 - 9.4	28-34	N/C

Sufficient mud materials to maintain mud properties and meet minimum lost circulation and weight increase requirements will be kept on location at all times.

What will be used to monitor the loss or gain of fluid?	PVT/Pason/Visual Monitoring
---	-----------------------------

6. Logging and Testing Procedures

Logging, Coring and Testing.

Y	Will run GR/CNL from TD to surface (horizontal well – vertical portion of hole). Stated logs run will be in the Completion Report and submitted to the BLM.
Y	No Logs are planned based on well control or offset log information.
N	Drill stem test? If yes, explain.
N	Coring? If yes, explain.

Additional logs planned		Interval
N	Resistivity	Pilot Hole TD to ICP
N	Density	Pilot Hole TD to ICP
Y	CBL	Production casing (If cement not circulated to surface)
Y	Mud log	Intermediate shoe to TD
N	PEX	

7. Drilling Conditions

Condition	Specify what type and where?
BH Pressure at deepest TVD	5305 psi at 10850' TVD
Abnormal Temperature	NO 165 Deg. F.

No abnormal pressure or temperature conditions are anticipated. Sufficient mud materials to maintain mud properties and weight increase requirements will be kept on location at all times.

Sufficient supplies of Paper/LCM for periodic sweeps to control seepage and losses will be maintained on location.

Hydrogen Sulfide (H₂S) monitors will be installed prior to drilling out the surface shoe. If H₂S is detected in concentrations greater than 100 ppm, the operator will comply with the provisions of Onshore Oil and Gas Order #6. If Hydrogen Sulfide is encountered, measured values and formations will be provided to the BLM.

N H₂S is present

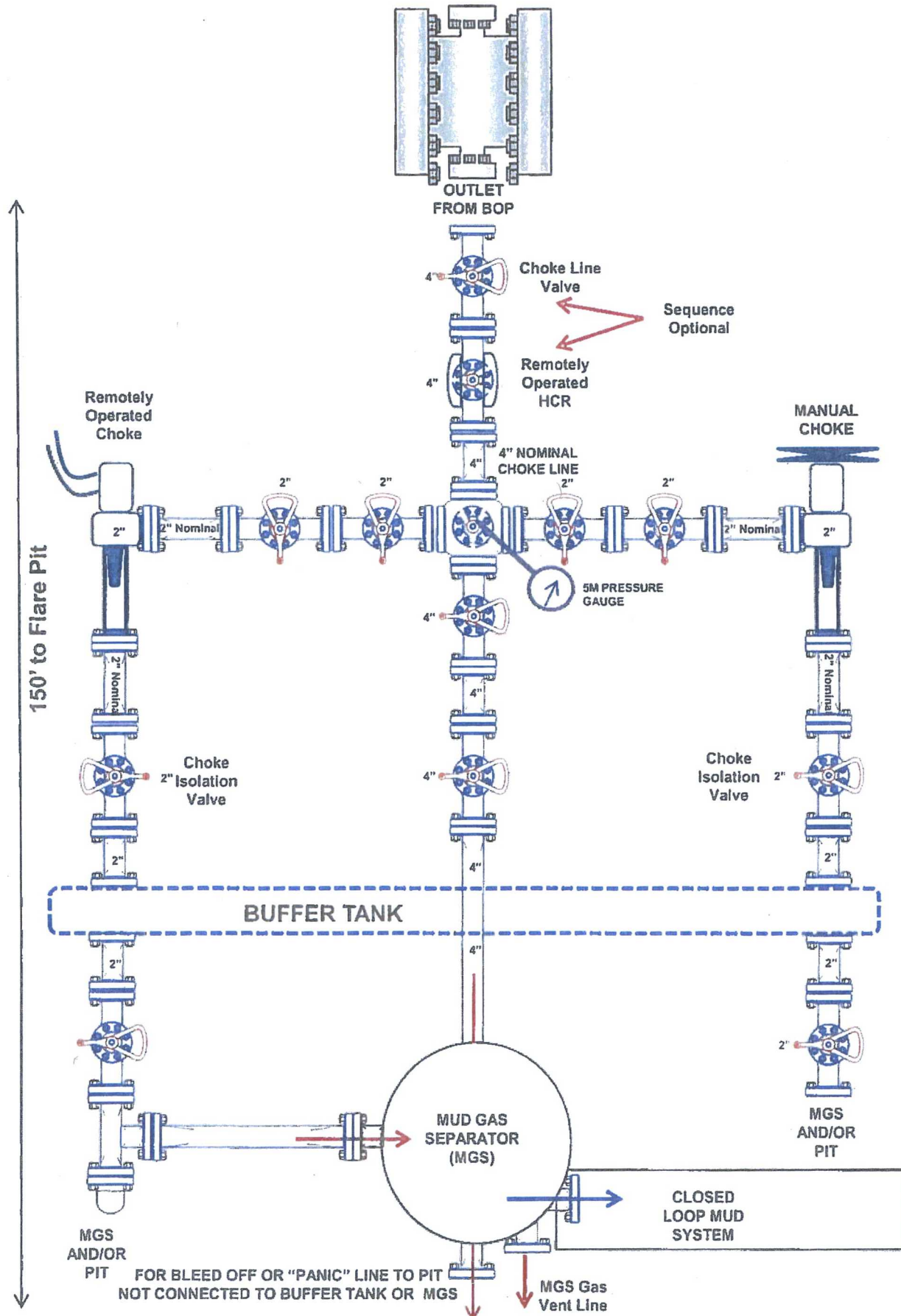
Y H₂S Plan attached

8. Other Facets of Operation

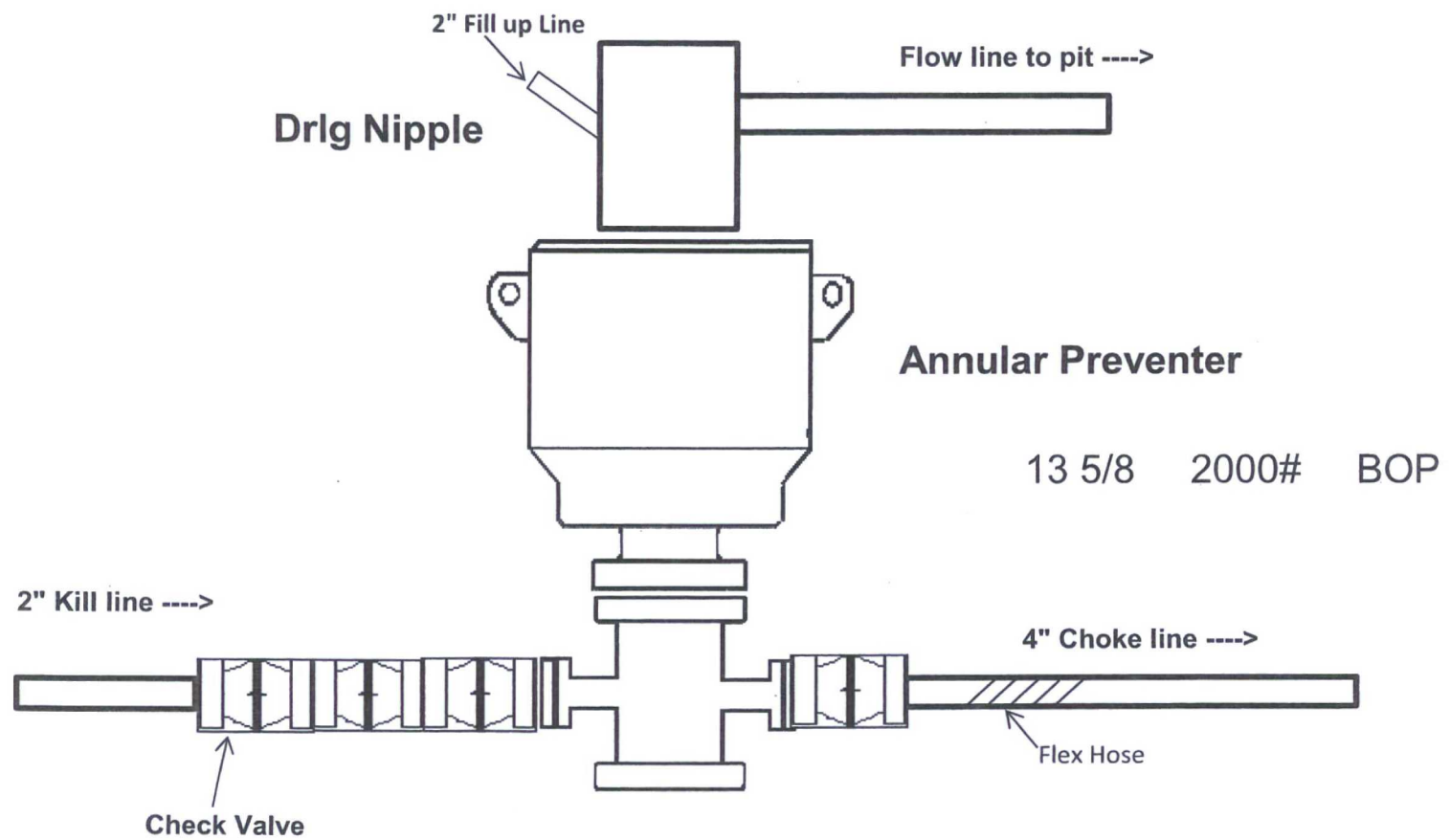
N	Is it a walking operation?
N	Is casing pre-set?

x	H ₂ S Plan.
x	BOP & Choke Schematics.
x	Directional Plan

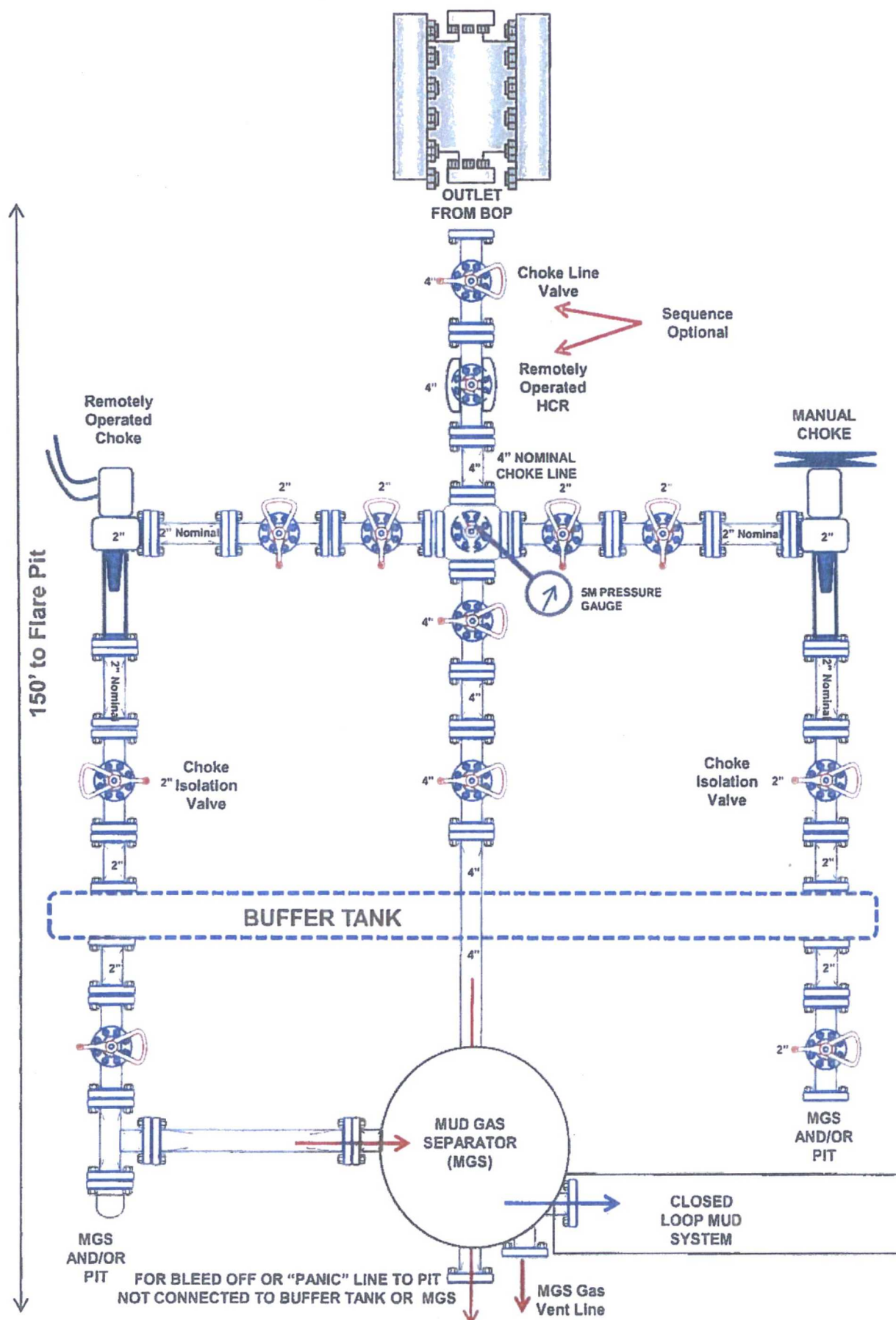
2M Choke Manifold Equipment (WITH MGS + CLOSED LOOP)



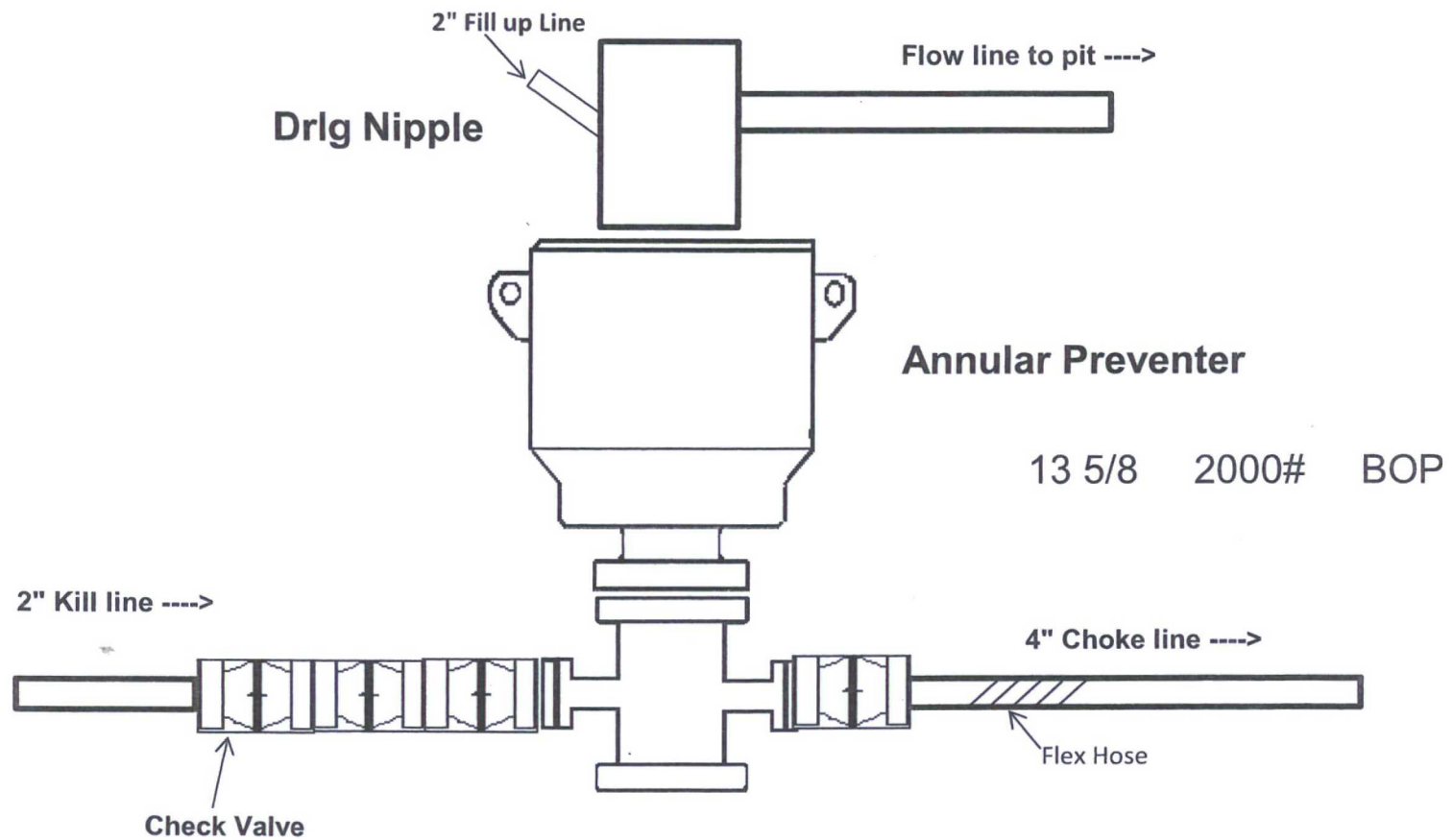
2,000 psi BOP Schematic



3M Choke Manifold Equipment (WITH MGS + CLOSED LOOP)

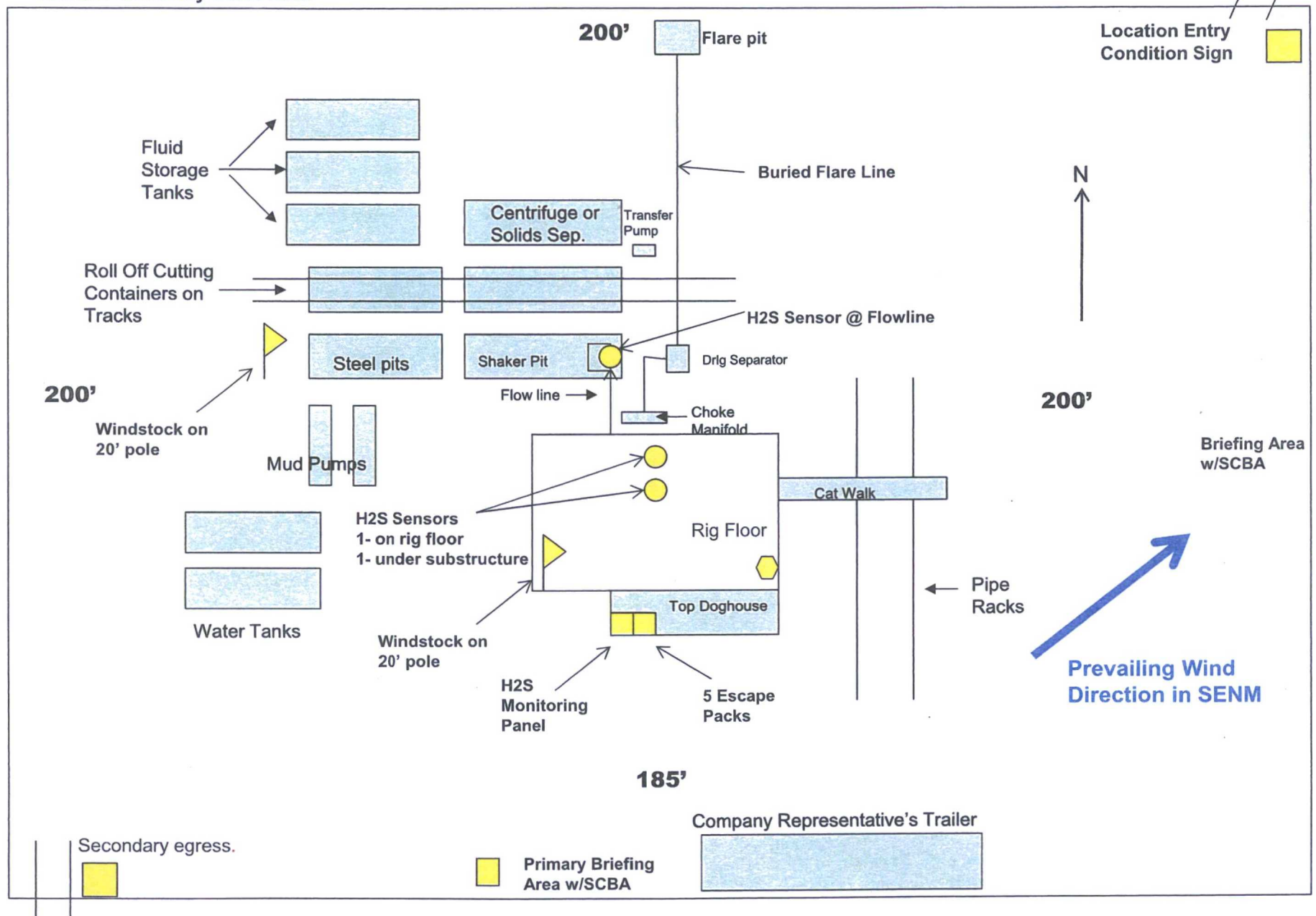


2,000 psi BOP Schematic



COG Operating LLC
H₂S Equipment Schematic
Terrain: Shinnery sand hills.

Well pad will be 400' x 385'
with cellar in center of pad



3,000 psi BOP Schematic

