



Lea County, NM (NAD 27 NME)

Ruby 2 Fed Com #703H

Plan #0.1

PROJECT DETAILS: Lea County, NM (NAD 27 NME)

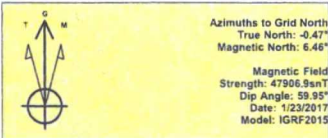
Geodetic System: US State Plane 1927 (Exact solution)
Datum: NAD 1927 (NADCON CONUS)
Ellipsoid: Clarke 1866
Zone: New Mexico East 3001
System Datum: Mean Sea Level

WELL DETAILS: #703H

Ground Level: 3305.0
KB = 25' @ 3330.0usft
Northing: 393590.00, Easting: 775183.00, Latitude: 32° 4' 44.326 N, Longitude: 103° 26' 41.583 W

SECTION DETAILS

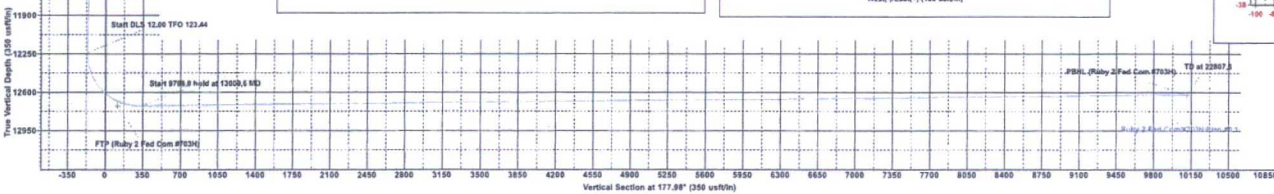
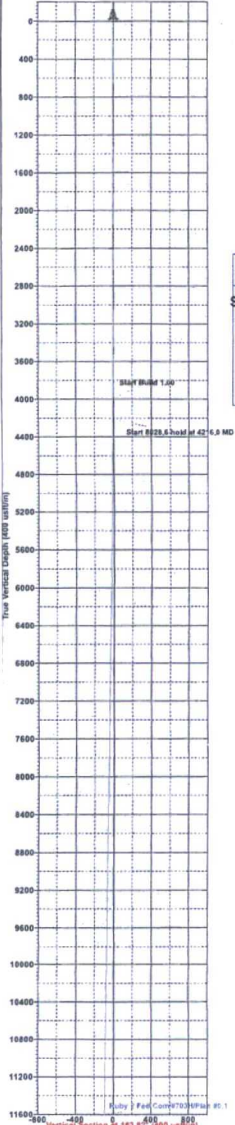
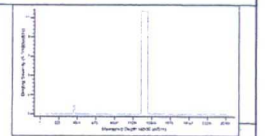
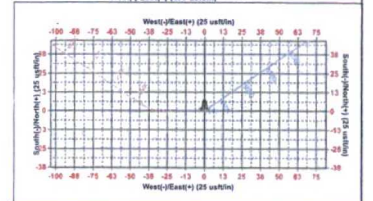
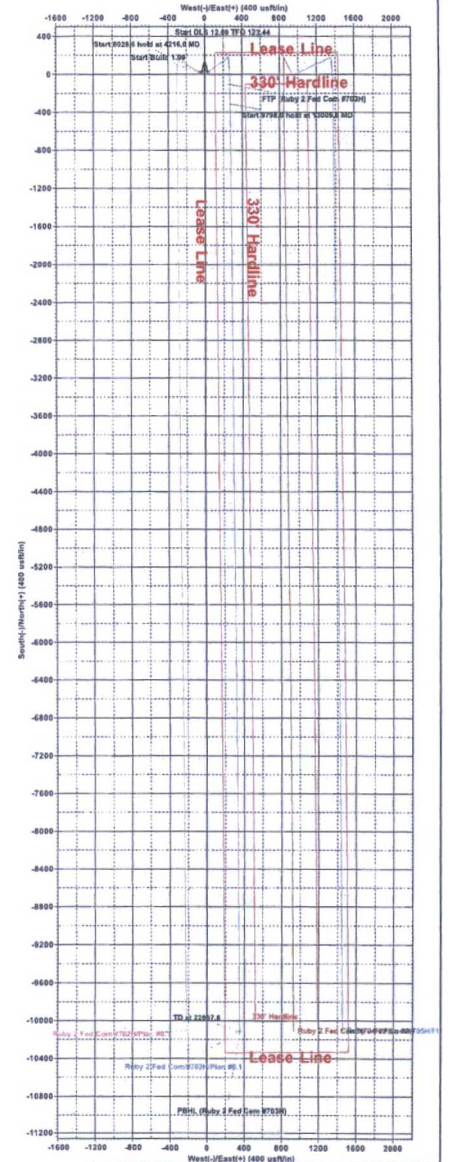
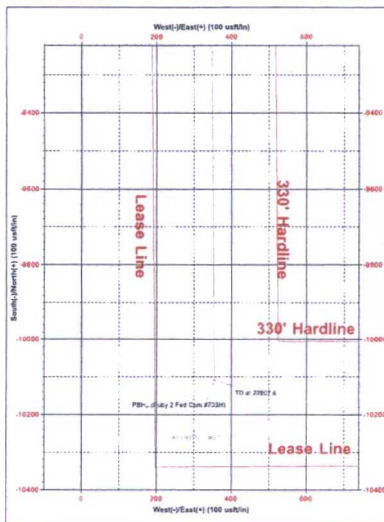
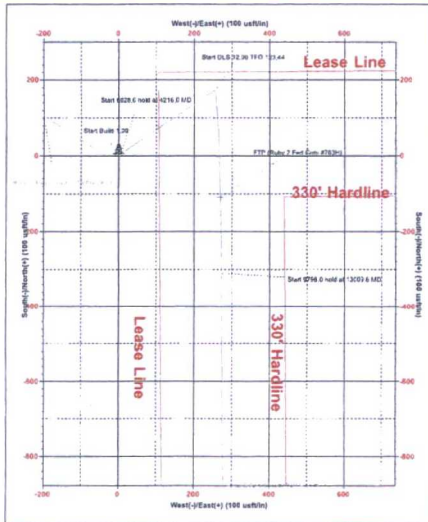
Table with 11 columns: Sec, MD, Inc, Azi, TVD, +N/-S, +E/-W, Dleg, TFace, VSect, Target. Row 1: 1, 0.0, 0.00, 0.00, 0.0, 0.0, 0.0, 0.00, 0.00, 0.0, 0.0. Row 2: 2, 4000.0, 0.00, 0.00, 4000.0, 0.0, 0.0, 0.00, 0.00, 0.0, 0.0. Row 3: 3, 4216.0, 2.16, 56.04, 4216.0, 2.3, 3.4, 1.00, 56.04, -2.2, 0.0. Row 4: 4, 12244.7, 2.16, 56.04, 12238.9, 171.3, 254.4, 0.00, 0.00, -162.3, 320.3. Row 5: 5, 13009.6, 90.60, 179.52, 12726.0, -310.9, 273.9, 12.00, 123.44, 320.3, 320.3. Row 6: 6, 22807.6, 90.60, 179.52, 12623.4, -10108.0, 356.0, 0.00, 0.00, 10114.3, PBL (Ruby 2 Fed Com #703H)



To convert a Magnetic Direction to a Grid Direction, Add 6.46°
To convert a Magnetic Direction to a True Direction, Add 6.93° East
To convert a True Direction to a Grid Direction, Subtract 0.47°

CASING DETAILS
No casing data is available

WELLBORE TARGET DETAILS (MAP CO-ORDINATES)
Name: PBL (Ruby 2 Fed Com #703H), TVD: 12623.4, +N/-S: -10198.0, +E/-W: 356.0, Northing: 383482.00, Easting: 775539.00
Name: FTP (Ruby 2 Fed Com #703H), TVD: 12726.0, +N/-S: -109.0, +E/-W: 271.0, Northing: 393481.00, Easting: 775454.00





## **EOG Resources - Midland**

Lea County, NM (NAD 27 NME)

Ruby 2 Fed Com

#703H

OH

Plan: Plan #0.1

## **Standard Planning Report**

24 January, 2017



Database: EDM 5000.1 Single User Db  
 Company: EOG Resources - Midland  
 Project: Lea County, NM (NAD 27 NME)  
 Site: Ruby 2 Fed Com  
 Well: #703H  
 Wellbore: OH  
 Design: Plan #0.1

Local Co-ordinate Reference: Well #703H  
 TVD Reference: KB = 25' @ 3330.0usft  
 MD Reference: KB = 25' @ 3330.0usft  
 North Reference: Grid  
 Survey Calculation Method: Minimum Curvature

<b>Project</b>	Lea County, NM (NAD 27 NME)		
<b>Map System:</b>	US State Plane 1927 (Exact solution)	<b>System Datum:</b>	Mean Sea Level
<b>Geo Datum:</b>	NAD 1927 (NADCON CONUS)		
<b>Map Zone:</b>	New Mexico East 3001		

**Site** Ruby 2 Fed Com

**Site Position:** Northing: 393,590.00 usft Latitude: 32° 4' 44.329 N  
**From:** Map Easting: 775,148.00 usft Longitude: 103° 26' 41.990 W  
**Position Uncertainty:** 0.0 usft Slot Radius: 13-3/16 " Grid Convergence: 0.47 °

**Well** #703H

**Well Position** +N/-S 0.0 usft Northing: 393,590.00 usft Latitude: 32° 4' 44.326 N  
 +E/-W 35.0 usft Easting: 775,183.00 usft Longitude: 103° 26' 41.583 W  
**Position Uncertainty** 0.0 usft Wellhead Elevation: 0.0 usft Ground Level: 3,305.0 usft

**Wellbore** OH

Magnetics	Model Name	Sample Date	Declination (°)	Dip Angle (°)	Field Strength (nT)
	IGRF2015	1/23/2017	6.93	59.95	47,907

**Design** Plan #0.1

**Audit Notes:**

**Version:** Phase: PLAN Tie On Depth: 0.0

Vertical Section:	Depth From (TVD) (usft)	+N/-S (usft)	+E/-W (usft)	Direction (°)
	0.0	0.0	0.0	177.98

**Plan Sections**

Measured Depth (usft)	Inclination (°)	Azimuth (°)	Vertical Depth (usft)	+N/-S (usft)	+E/-W (usft)	Dogleg Rate (°/100usft)	Build Rate (°/100usft)	Turn Rate (°/100usft)	TFO (°)	Target
0.0	0.00	0.00	0.0	0.0	0.0	0.00	0.00	0.00	0.00	
4,000.0	0.00	0.00	4,000.0	0.0	0.0	0.00	0.00	0.00	0.00	
4,216.0	2.16	56.04	4,216.0	2.3	3.4	1.00	1.00	0.00	56.04	
12,244.7	2.16	56.04	12,238.9	171.3	254.4	0.00	0.00	0.00	0.00	
13,009.6	90.60	179.52	12,726.0	-310.9	273.9	12.00	11.56	16.14	123.44	
22,807.6	90.60	179.52	12,623.4	-10,108.0	356.0	0.00	0.00	0.00	0.00	PBHL (Ruby 2 Fed Co



EOG Resources, Inc.

Planning Report

Database: EDM 5000.1 Single User Db  
 Company: EOG Resources - Midland  
 Project: Lea County, NM (NAD 27 NME)  
 Site: Ruby 2 Fed Com  
 Well: #703H  
 Wellbore: OH  
 Design: Plan #0.1

Local Co-ordinate Reference: Well #703H  
 TVD Reference: KB = 25' @ 3330.0usft  
 MD Reference: KB = 25' @ 3330.0usft  
 North Reference: Grid  
 Survey Calculation Method: Minimum Curvature

Planned Survey

Measured Depth (usft)	Inclination (°)	Azimuth (°)	Vertical Depth (usft)	+N/-S (usft)	+E/-W (usft)	Vertical Section (usft)	Dogleg Rate (°/100usft)	Build Rate (°/100usft)	Turn Rate (°/100usft)
0.0	0.00	0.00	0.0	0.0	0.0	0.0	0.00	0.00	0.00
100.0	0.00	0.00	100.0	0.0	0.0	0.0	0.00	0.00	0.00
200.0	0.00	0.00	200.0	0.0	0.0	0.0	0.00	0.00	0.00
300.0	0.00	0.00	300.0	0.0	0.0	0.0	0.00	0.00	0.00
400.0	0.00	0.00	400.0	0.0	0.0	0.0	0.00	0.00	0.00
500.0	0.00	0.00	500.0	0.0	0.0	0.0	0.00	0.00	0.00
600.0	0.00	0.00	600.0	0.0	0.0	0.0	0.00	0.00	0.00
700.0	0.00	0.00	700.0	0.0	0.0	0.0	0.00	0.00	0.00
800.0	0.00	0.00	800.0	0.0	0.0	0.0	0.00	0.00	0.00
900.0	0.00	0.00	900.0	0.0	0.0	0.0	0.00	0.00	0.00
1,000.0	0.00	0.00	1,000.0	0.0	0.0	0.0	0.00	0.00	0.00
1,100.0	0.00	0.00	1,100.0	0.0	0.0	0.0	0.00	0.00	0.00
1,200.0	0.00	0.00	1,200.0	0.0	0.0	0.0	0.00	0.00	0.00
1,300.0	0.00	0.00	1,300.0	0.0	0.0	0.0	0.00	0.00	0.00
1,400.0	0.00	0.00	1,400.0	0.0	0.0	0.0	0.00	0.00	0.00
1,500.0	0.00	0.00	1,500.0	0.0	0.0	0.0	0.00	0.00	0.00
1,600.0	0.00	0.00	1,600.0	0.0	0.0	0.0	0.00	0.00	0.00
1,700.0	0.00	0.00	1,700.0	0.0	0.0	0.0	0.00	0.00	0.00
1,800.0	0.00	0.00	1,800.0	0.0	0.0	0.0	0.00	0.00	0.00
1,900.0	0.00	0.00	1,900.0	0.0	0.0	0.0	0.00	0.00	0.00
2,000.0	0.00	0.00	2,000.0	0.0	0.0	0.0	0.00	0.00	0.00
2,100.0	0.00	0.00	2,100.0	0.0	0.0	0.0	0.00	0.00	0.00
2,200.0	0.00	0.00	2,200.0	0.0	0.0	0.0	0.00	0.00	0.00
2,300.0	0.00	0.00	2,300.0	0.0	0.0	0.0	0.00	0.00	0.00
2,400.0	0.00	0.00	2,400.0	0.0	0.0	0.0	0.00	0.00	0.00
2,500.0	0.00	0.00	2,500.0	0.0	0.0	0.0	0.00	0.00	0.00
2,600.0	0.00	0.00	2,600.0	0.0	0.0	0.0	0.00	0.00	0.00
2,700.0	0.00	0.00	2,700.0	0.0	0.0	0.0	0.00	0.00	0.00
2,800.0	0.00	0.00	2,800.0	0.0	0.0	0.0	0.00	0.00	0.00
2,900.0	0.00	0.00	2,900.0	0.0	0.0	0.0	0.00	0.00	0.00
3,000.0	0.00	0.00	3,000.0	0.0	0.0	0.0	0.00	0.00	0.00
3,100.0	0.00	0.00	3,100.0	0.0	0.0	0.0	0.00	0.00	0.00
3,200.0	0.00	0.00	3,200.0	0.0	0.0	0.0	0.00	0.00	0.00
3,300.0	0.00	0.00	3,300.0	0.0	0.0	0.0	0.00	0.00	0.00
3,400.0	0.00	0.00	3,400.0	0.0	0.0	0.0	0.00	0.00	0.00
3,500.0	0.00	0.00	3,500.0	0.0	0.0	0.0	0.00	0.00	0.00
3,600.0	0.00	0.00	3,600.0	0.0	0.0	0.0	0.00	0.00	0.00
3,700.0	0.00	0.00	3,700.0	0.0	0.0	0.0	0.00	0.00	0.00
3,800.0	0.00	0.00	3,800.0	0.0	0.0	0.0	0.00	0.00	0.00
3,900.0	0.00	0.00	3,900.0	0.0	0.0	0.0	0.00	0.00	0.00
4,000.0	0.00	0.00	4,000.0	0.0	0.0	0.0	0.00	0.00	0.00
4,100.0	1.00	56.04	4,100.0	0.5	0.7	-0.5	1.00	1.00	0.00
4,200.0	2.00	56.04	4,200.0	1.9	2.9	-1.8	1.00	1.00	0.00
4,216.0	2.16	56.04	4,216.0	2.3	3.4	-2.2	1.00	1.00	0.00
4,300.0	2.16	56.04	4,299.9	4.0	6.0	-3.8	0.00	0.00	0.00
4,400.0	2.16	56.04	4,399.8	6.1	9.1	-5.8	0.00	0.00	0.00
4,500.0	2.16	56.04	4,499.7	8.3	12.3	-7.8	0.00	0.00	0.00
4,600.0	2.16	56.04	4,599.7	10.4	15.4	-9.8	0.00	0.00	0.00
4,700.0	2.16	56.04	4,699.6	12.5	18.5	-11.8	0.00	0.00	0.00
4,800.0	2.16	56.04	4,799.5	14.6	21.6	-13.8	0.00	0.00	0.00
4,900.0	2.16	56.04	4,899.5	16.7	24.8	-15.8	0.00	0.00	0.00
5,000.0	2.16	56.04	4,999.4	18.8	27.9	-17.8	0.00	0.00	0.00
5,100.0	2.16	56.04	5,099.3	20.9	31.0	-19.8	0.00	0.00	0.00
5,200.0	2.16	56.04	5,199.2	23.0	34.1	-21.8	0.00	0.00	0.00



Database: EDM 5000.1 Single User Db  
 Company: EOG Resources - Midland  
 Project: Lea County, NM (NAD 27 NME)  
 Site: Ruby 2 Fed Com  
 Well: #703H  
 Wellbore: OH  
 Design: Plan #0.1

Local Co-ordinate Reference: Well #703H  
 TVD Reference: KB = 25' @ 3330.0usft  
 MD Reference: KB = 25' @ 3330.0usft  
 North Reference: Grid  
 Survey Calculation Method: Minimum Curvature

Planned Survey

Measured Depth (usft)	Inclination (°)	Azimuth (°)	Vertical Depth (usft)	+N/-S (usft)	+E/-W (usft)	Vertical Section (usft)	Dogleg Rate (°/100usft)	Build Rate (°/100usft)	Turn Rate (°/100usft)
5,300.0	2.16	56.04	5,299.2	25.1	37.3	-23.8	0.00	0.00	0.00
5,400.0	2.16	56.04	5,399.1	27.2	40.4	-25.8	0.00	0.00	0.00
5,500.0	2.16	56.04	5,499.0	29.3	43.5	-27.8	0.00	0.00	0.00
5,600.0	2.16	56.04	5,599.0	31.4	46.6	-29.8	0.00	0.00	0.00
5,700.0	2.16	56.04	5,698.9	33.5	49.8	-31.7	0.00	0.00	0.00
5,800.0	2.16	56.04	5,798.8	35.6	52.9	-33.7	0.00	0.00	0.00
5,900.0	2.16	56.04	5,898.8	37.7	56.0	-35.7	0.00	0.00	0.00
6,000.0	2.16	56.04	5,998.7	39.8	59.2	-37.7	0.00	0.00	0.00
6,100.0	2.16	56.04	6,098.6	41.9	62.3	-39.7	0.00	0.00	0.00
6,200.0	2.16	56.04	6,198.5	44.1	65.4	-41.7	0.00	0.00	0.00
6,300.0	2.16	56.04	6,298.5	46.2	68.5	-43.7	0.00	0.00	0.00
6,400.0	2.16	56.04	6,398.4	48.3	71.7	-45.7	0.00	0.00	0.00
6,500.0	2.16	56.04	6,498.3	50.4	74.8	-47.7	0.00	0.00	0.00
6,600.0	2.16	56.04	6,598.3	52.5	77.9	-49.7	0.00	0.00	0.00
6,700.0	2.16	56.04	6,698.2	54.6	81.0	-51.7	0.00	0.00	0.00
6,800.0	2.16	56.04	6,798.1	56.7	84.2	-53.7	0.00	0.00	0.00
6,900.0	2.16	56.04	6,898.0	58.8	87.3	-55.7	0.00	0.00	0.00
7,000.0	2.16	56.04	6,998.0	60.9	90.4	-57.7	0.00	0.00	0.00
7,100.0	2.16	56.04	7,097.9	63.0	93.5	-59.7	0.00	0.00	0.00
7,200.0	2.16	56.04	7,197.8	65.1	96.7	-61.7	0.00	0.00	0.00
7,300.0	2.16	56.04	7,297.8	67.2	99.8	-63.7	0.00	0.00	0.00
7,400.0	2.16	56.04	7,397.7	69.3	102.9	-65.7	0.00	0.00	0.00
7,500.0	2.16	56.04	7,497.6	71.4	106.1	-67.6	0.00	0.00	0.00
7,600.0	2.16	56.04	7,597.5	73.5	109.2	-69.6	0.00	0.00	0.00
7,700.0	2.16	56.04	7,697.5	75.6	112.3	-71.6	0.00	0.00	0.00
7,800.0	2.16	56.04	7,797.4	77.7	115.4	-73.6	0.00	0.00	0.00
7,900.0	2.16	56.04	7,897.3	79.8	118.6	-75.6	0.00	0.00	0.00
8,000.0	2.16	56.04	7,997.3	82.0	121.7	-77.6	0.00	0.00	0.00
8,100.0	2.16	56.04	8,097.2	84.1	124.8	-79.6	0.00	0.00	0.00
8,200.0	2.16	56.04	8,197.1	86.2	127.9	-81.6	0.00	0.00	0.00
8,300.0	2.16	56.04	8,297.0	88.3	131.1	-83.6	0.00	0.00	0.00
8,400.0	2.16	56.04	8,397.0	90.4	134.2	-85.6	0.00	0.00	0.00
8,500.0	2.16	56.04	8,496.9	92.5	137.3	-87.6	0.00	0.00	0.00
8,600.0	2.16	56.04	8,596.8	94.6	140.4	-89.6	0.00	0.00	0.00
8,700.0	2.16	56.04	8,696.8	96.7	143.6	-91.6	0.00	0.00	0.00
8,800.0	2.16	56.04	8,796.7	98.8	146.7	-93.6	0.00	0.00	0.00
8,900.0	2.16	56.04	8,896.6	100.9	149.8	-95.6	0.00	0.00	0.00
9,000.0	2.16	56.04	8,996.5	103.0	152.9	-97.6	0.00	0.00	0.00
9,100.0	2.16	56.04	9,096.5	105.1	156.1	-99.6	0.00	0.00	0.00
9,200.0	2.16	56.04	9,196.4	107.2	159.2	-101.6	0.00	0.00	0.00
9,300.0	2.16	56.04	9,296.3	109.3	162.3	-103.5	0.00	0.00	0.00
9,400.0	2.16	56.04	9,396.3	111.4	165.5	-105.5	0.00	0.00	0.00
9,500.0	2.16	56.04	9,496.2	113.5	168.6	-107.5	0.00	0.00	0.00
9,600.0	2.16	56.04	9,596.1	115.6	171.7	-109.5	0.00	0.00	0.00
9,700.0	2.16	56.04	9,696.1	117.7	174.8	-111.5	0.00	0.00	0.00
9,800.0	2.16	56.04	9,796.0	119.9	178.0	-113.5	0.00	0.00	0.00
9,900.0	2.16	56.04	9,895.9	122.0	181.1	-115.5	0.00	0.00	0.00
10,000.0	2.16	56.04	9,995.8	124.1	184.2	-117.5	0.00	0.00	0.00
10,100.0	2.16	56.04	10,095.8	126.2	187.3	-119.5	0.00	0.00	0.00
10,200.0	2.16	56.04	10,195.7	128.3	190.5	-121.5	0.00	0.00	0.00
10,300.0	2.16	56.04	10,295.6	130.4	193.6	-123.5	0.00	0.00	0.00
10,400.0	2.16	56.04	10,395.6	132.5	196.7	-125.5	0.00	0.00	0.00
10,500.0	2.16	56.04	10,495.5	134.6	199.8	-127.5	0.00	0.00	0.00
10,600.0	2.16	56.04	10,595.4	136.7	203.0	-129.5	0.00	0.00	0.00



Database: EDM 5000.1 Single User Db  
 Company: EOG Resources - Midland  
 Project: Lea County, NM (NAD 27 NME)  
 Site: Ruby 2 Fed Com  
 Well: #703H  
 Wellbore: OH  
 Design: Plan #0.1

Local Co-ordinate Reference: Well #703H  
 TVD Reference: KB = 25' @ 3330.0usft  
 MD Reference: KB = 25' @ 3330.0usft  
 North Reference: Grid  
 Survey Calculation Method: Minimum Curvature

Planned Survey

Measured Depth (usft)	Inclination (°)	Azimuth (°)	Vertical Depth (usft)	+N/-S (usft)	+E/-W (usft)	Vertical Section (usft)	Dogleg Rate (°/100usft)	Build Rate (°/100usft)	Turn Rate (°/100usft)
10,700.0	2.16	56.04	10,695.3	138.8	206.1	-131.5	0.00	0.00	0.00
10,800.0	2.16	56.04	10,795.3	140.9	209.2	-133.5	0.00	0.00	0.00
10,900.0	2.16	56.04	10,895.2	143.0	212.4	-135.5	0.00	0.00	0.00
11,000.0	2.16	56.04	10,995.1	145.1	215.5	-137.4	0.00	0.00	0.00
11,100.0	2.16	56.04	11,095.1	147.2	218.6	-139.4	0.00	0.00	0.00
11,200.0	2.16	56.04	11,195.0	149.3	221.7	-141.4	0.00	0.00	0.00
11,300.0	2.16	56.04	11,294.9	151.4	224.9	-143.4	0.00	0.00	0.00
11,400.0	2.16	56.04	11,394.8	153.5	228.0	-145.4	0.00	0.00	0.00
11,500.0	2.16	56.04	11,494.8	155.7	231.1	-147.4	0.00	0.00	0.00
11,600.0	2.16	56.04	11,594.7	157.8	234.2	-149.4	0.00	0.00	0.00
11,700.0	2.16	56.04	11,694.6	159.9	237.4	-151.4	0.00	0.00	0.00
11,800.0	2.16	56.04	11,794.6	162.0	240.5	-153.4	0.00	0.00	0.00
11,900.0	2.16	56.04	11,894.5	164.1	243.6	-155.4	0.00	0.00	0.00
12,000.0	2.16	56.04	11,994.4	166.2	246.7	-157.4	0.00	0.00	0.00
12,100.0	2.16	56.04	12,094.3	168.3	249.9	-159.4	0.00	0.00	0.00
12,200.0	2.16	56.04	12,194.3	170.4	253.0	-161.4	0.00	0.00	0.00
12,244.7	2.16	56.04	12,238.9	171.3	254.4	-162.3	0.00	0.00	0.00
12,250.0	1.88	72.50	12,244.2	171.4	254.6	-162.3	12.00	-5.17	308.66
12,275.0	3.04	143.17	12,269.2	171.0	255.3	-161.9	12.00	4.62	282.69
12,300.0	5.74	161.25	12,294.1	169.3	256.1	-160.2	12.00	10.79	72.34
12,325.0	8.64	167.54	12,318.9	166.3	257.0	-157.1	12.00	11.60	25.17
12,350.0	11.59	170.67	12,343.6	162.0	257.8	-152.8	12.00	11.80	12.51
12,375.0	14.56	172.54	12,367.9	156.4	258.6	-147.2	12.00	11.88	7.47
12,400.0	17.54	173.79	12,391.9	149.5	259.4	-140.3	12.00	11.92	4.98
12,425.0	20.52	174.68	12,415.6	141.4	260.2	-132.1	12.00	11.94	3.57
12,450.0	23.51	175.35	12,438.7	132.1	261.0	-122.8	12.00	11.96	2.70
12,475.0	26.51	175.88	12,461.4	121.5	261.8	-112.2	12.00	11.97	2.12
12,500.0	29.50	176.31	12,483.5	109.8	262.6	-100.5	12.00	11.97	1.72
12,525.0	32.49	176.67	12,504.9	97.0	263.4	-87.6	12.00	11.98	1.43
12,550.0	35.49	176.97	12,525.6	83.0	264.2	-73.7	12.00	11.98	1.21
12,575.0	38.48	177.23	12,545.6	68.0	264.9	-58.6	12.00	11.98	1.04
12,600.0	41.48	177.46	12,564.7	51.9	265.7	-42.6	12.00	11.99	0.92
12,625.0	44.48	177.66	12,583.0	34.9	266.4	-25.5	12.00	11.99	0.81
12,650.0	47.47	177.85	12,600.4	17.0	267.1	-7.5	12.00	11.99	0.73
12,675.0	50.47	178.01	12,616.8	-1.9	267.8	11.3	12.00	11.99	0.66
12,700.0	53.47	178.17	12,632.2	-21.6	268.4	31.0	12.00	11.99	0.61
12,725.0	56.47	178.31	12,646.5	-42.0	269.1	51.5	12.00	11.99	0.56
12,750.0	59.47	178.44	12,659.8	-63.2	269.7	72.7	12.00	11.99	0.53
12,775.0	62.46	178.56	12,671.9	-85.1	270.3	94.5	12.00	11.99	0.49
12,800.0	65.46	178.68	12,682.9	-107.5	270.8	117.0	12.00	11.99	0.47
12,818.2	67.65	178.76	12,690.2	-124.2	271.2	133.7	12.00	11.99	0.45
<b>FTP (Ruby 2 Fed Com #703H)</b>									
12,825.0	68.46	178.79	12,692.7	-130.5	271.3	140.0	12.00	11.99	0.44
12,850.0	71.46	178.90	12,701.3	-154.0	271.8	163.5	12.00	11.99	0.43
12,875.0	74.46	179.00	12,708.6	-177.9	272.2	187.4	12.00	11.99	0.41
12,900.0	77.46	179.10	12,714.7	-202.1	272.6	211.6	12.00	11.99	0.40
12,925.0	80.45	179.20	12,719.4	-226.7	273.0	236.1	12.00	11.99	0.39
12,950.0	83.45	179.29	12,722.9	-251.4	273.3	260.9	12.00	11.99	0.39
12,975.0	86.45	179.39	12,725.1	-276.3	273.6	285.8	12.00	11.99	0.38
13,000.0	89.45	179.48	12,726.0	-301.3	273.8	310.7	12.00	11.99	0.38
13,009.6	90.60	179.52	12,726.0	-310.9	273.9	320.3	12.00	11.99	0.38
13,100.0	90.60	179.52	12,725.1	-401.3	274.7	410.7	0.00	0.00	0.00
13,200.0	90.60	179.52	12,724.0	-501.3	275.5	510.7	0.00	0.00	0.00



EOG Resources, Inc.  
Planning Report

Database: EDM 5000.1 Single User Db  
 Company: EOG Resources - Midland  
 Project: Lea County, NM (NAD 27 NME)  
 Site: Ruby 2 Fed Com  
 Well: #703H  
 Wellbore: OH  
 Design: Plan #0.1

Local Co-ordinate Reference: Well #703H  
 TVD Reference: KB = 25' @ 3330.0usft  
 MD Reference: KB = 25' @ 3330.0usft  
 North Reference: Grid  
 Survey Calculation Method: Minimum Curvature

Planned Survey

Measured Depth (usft)	Inclination (°)	Azimuth (°)	Vertical Depth (usft)	+N/-S (usft)	+E/-W (usft)	Vertical Section (usft)	Dogleg Rate (°/100usft)	Build Rate (°/100usft)	Turn Rate (°/100usft)
13,300.0	90.60	179.52	12,723.0	-601.3	276.4	610.6	0.00	0.00	0.00
13,400.0	90.60	179.52	12,721.9	-701.3	277.2	710.6	0.00	0.00	0.00
13,500.0	90.60	179.52	12,720.9	-801.2	278.0	810.5	0.00	0.00	0.00
13,600.0	90.60	179.52	12,719.8	-901.2	278.9	910.5	0.00	0.00	0.00
13,700.0	90.60	179.52	12,718.8	-1,001.2	279.7	1,010.4	0.00	0.00	0.00
13,800.0	90.60	179.52	12,717.8	-1,101.2	280.5	1,110.4	0.00	0.00	0.00
13,900.0	90.60	179.52	12,716.7	-1,201.2	281.4	1,210.4	0.00	0.00	0.00
14,000.0	90.60	179.52	12,715.7	-1,301.2	282.2	1,310.3	0.00	0.00	0.00
14,100.0	90.60	179.52	12,714.6	-1,401.2	283.1	1,410.3	0.00	0.00	0.00
14,200.0	90.60	179.52	12,713.6	-1,501.2	283.9	1,510.2	0.00	0.00	0.00
14,300.0	90.60	179.52	12,712.5	-1,601.2	284.7	1,610.2	0.00	0.00	0.00
14,400.0	90.60	179.52	12,711.5	-1,701.2	285.6	1,710.2	0.00	0.00	0.00
14,500.0	90.60	179.52	12,710.4	-1,801.2	286.4	1,810.1	0.00	0.00	0.00
14,600.0	90.60	179.52	12,709.4	-1,901.1	287.2	1,910.1	0.00	0.00	0.00
14,700.0	90.60	179.52	12,708.3	-2,001.1	288.1	2,010.0	0.00	0.00	0.00
14,800.0	90.60	179.52	12,707.3	-2,101.1	288.9	2,110.0	0.00	0.00	0.00
14,900.0	90.60	179.52	12,706.2	-2,201.1	289.8	2,210.0	0.00	0.00	0.00
15,000.0	90.60	179.52	12,705.2	-2,301.1	290.6	2,309.9	0.00	0.00	0.00
15,100.0	90.60	179.52	12,704.1	-2,401.1	291.4	2,409.9	0.00	0.00	0.00
15,200.0	90.60	179.52	12,703.1	-2,501.1	292.3	2,509.8	0.00	0.00	0.00
15,300.0	90.60	179.52	12,702.0	-2,601.1	293.1	2,609.8	0.00	0.00	0.00
15,400.0	90.60	179.52	12,701.0	-2,701.1	293.9	2,709.7	0.00	0.00	0.00
15,500.0	90.60	179.52	12,700.0	-2,801.1	294.8	2,809.7	0.00	0.00	0.00
15,600.0	90.60	179.52	12,698.9	-2,901.1	295.6	2,909.7	0.00	0.00	0.00
15,700.0	90.60	179.52	12,697.9	-3,001.0	296.5	3,009.6	0.00	0.00	0.00
15,800.0	90.60	179.52	12,696.8	-3,101.0	297.3	3,109.6	0.00	0.00	0.00
15,900.0	90.60	179.52	12,695.8	-3,201.0	298.1	3,209.5	0.00	0.00	0.00
16,000.0	90.60	179.52	12,694.7	-3,301.0	299.0	3,309.5	0.00	0.00	0.00
16,100.0	90.60	179.52	12,693.7	-3,401.0	299.8	3,409.5	0.00	0.00	0.00
16,200.0	90.60	179.52	12,692.6	-3,501.0	300.6	3,509.4	0.00	0.00	0.00
16,300.0	90.60	179.52	12,691.6	-3,601.0	301.5	3,609.4	0.00	0.00	0.00
16,400.0	90.60	179.52	12,690.5	-3,701.0	302.3	3,709.3	0.00	0.00	0.00
16,500.0	90.60	179.52	12,689.5	-3,801.0	303.2	3,809.3	0.00	0.00	0.00
16,600.0	90.60	179.52	12,688.4	-3,901.0	304.0	3,909.2	0.00	0.00	0.00
16,700.0	90.60	179.52	12,687.4	-4,001.0	304.8	4,009.2	0.00	0.00	0.00
16,800.0	90.60	179.52	12,686.3	-4,100.9	305.7	4,109.2	0.00	0.00	0.00
16,900.0	90.60	179.52	12,685.3	-4,200.9	306.5	4,209.1	0.00	0.00	0.00
17,000.0	90.60	179.52	12,684.2	-4,300.9	307.3	4,309.1	0.00	0.00	0.00
17,100.0	90.60	179.52	12,683.2	-4,400.9	308.2	4,409.0	0.00	0.00	0.00
17,200.0	90.60	179.52	12,682.2	-4,500.9	309.0	4,509.0	0.00	0.00	0.00
17,300.0	90.60	179.52	12,681.1	-4,600.9	309.9	4,609.0	0.00	0.00	0.00
17,400.0	90.60	179.52	12,680.1	-4,700.9	310.7	4,708.9	0.00	0.00	0.00
17,500.0	90.60	179.52	12,679.0	-4,800.9	311.5	4,808.9	0.00	0.00	0.00
17,600.0	90.60	179.52	12,678.0	-4,900.9	312.4	4,908.8	0.00	0.00	0.00
17,700.0	90.60	179.52	12,676.9	-5,000.9	313.2	5,008.8	0.00	0.00	0.00
17,800.0	90.60	179.52	12,675.9	-5,100.9	314.1	5,108.7	0.00	0.00	0.00
17,900.0	90.60	179.52	12,674.8	-5,200.8	314.9	5,208.7	0.00	0.00	0.00
18,000.0	90.60	179.52	12,673.8	-5,300.8	315.7	5,308.7	0.00	0.00	0.00
18,100.0	90.60	179.52	12,672.7	-5,400.8	316.6	5,408.6	0.00	0.00	0.00
18,200.0	90.60	179.52	12,671.7	-5,500.8	317.4	5,508.6	0.00	0.00	0.00
18,300.0	90.60	179.52	12,670.6	-5,600.8	318.2	5,608.5	0.00	0.00	0.00
18,400.0	90.60	179.52	12,669.6	-5,700.8	319.1	5,708.5	0.00	0.00	0.00
18,500.0	90.60	179.52	12,668.5	-5,800.8	319.9	5,808.5	0.00	0.00	0.00
18,600.0	90.60	179.52	12,667.5	-5,900.8	320.8	5,908.4	0.00	0.00	0.00



EOG Resources, Inc.

Planning Report

Database: EDM 5000.1 Single User Db  
 Company: EOG Resources - Midland  
 Project: Lea County, NM (NAD 27 NME)  
 Site: Ruby 2 Fed Com  
 Well: #703H  
 Wellbore: OH  
 Design: Plan #0.1

Local Co-ordinate Reference: Well #703H  
 TVD Reference: KB = 25' @ 3330.0usft  
 MD Reference: KB = 25' @ 3330.0usft  
 North Reference: Grid  
 Survey Calculation Method: Minimum Curvature

Planned Survey

Measured Depth (usft)	Inclination (°)	Azimuth (°)	Vertical Depth (usft)	+N/-S (usft)	+E/-W (usft)	Vertical Section (usft)	Dogleg Rate (°/100usft)	Build Rate (°/100usft)	Turn Rate (°/100usft)
18,700.0	90.60	179.52	12,666.4	-6,000.8	321.6	6,008.4	0.00	0.00	0.00
18,800.0	90.60	179.52	12,665.4	-6,100.8	322.4	6,108.3	0.00	0.00	0.00
18,900.0	90.60	179.52	12,664.3	-6,200.8	323.3	6,208.3	0.00	0.00	0.00
19,000.0	90.60	179.52	12,663.3	-6,300.7	324.1	6,308.3	0.00	0.00	0.00
19,100.0	90.60	179.52	12,662.3	-6,400.7	324.9	6,408.2	0.00	0.00	0.00
19,200.0	90.60	179.52	12,661.2	-6,500.7	325.8	6,508.2	0.00	0.00	0.00
19,300.0	90.60	179.52	12,660.2	-6,600.7	326.6	6,608.1	0.00	0.00	0.00
19,400.0	90.60	179.52	12,659.1	-6,700.7	327.5	6,708.1	0.00	0.00	0.00
19,500.0	90.60	179.52	12,658.1	-6,800.7	328.3	6,808.0	0.00	0.00	0.00
19,600.0	90.60	179.52	12,657.0	-6,900.7	329.1	6,908.0	0.00	0.00	0.00
19,700.0	90.60	179.52	12,656.0	-7,000.7	330.0	7,008.0	0.00	0.00	0.00
19,800.0	90.60	179.52	12,654.9	-7,100.7	330.8	7,107.9	0.00	0.00	0.00
19,900.0	90.60	179.52	12,653.9	-7,200.7	331.6	7,207.9	0.00	0.00	0.00
20,000.0	90.60	179.52	12,652.8	-7,300.7	332.5	7,307.8	0.00	0.00	0.00
20,100.0	90.60	179.52	12,651.8	-7,400.6	333.3	7,407.8	0.00	0.00	0.00
20,200.0	90.60	179.52	12,650.7	-7,500.6	334.2	7,507.8	0.00	0.00	0.00
20,300.0	90.60	179.52	12,649.7	-7,600.6	335.0	7,607.7	0.00	0.00	0.00
20,400.0	90.60	179.52	12,648.6	-7,700.6	335.8	7,707.7	0.00	0.00	0.00
20,500.0	90.60	179.52	12,647.6	-7,800.6	336.7	7,807.6	0.00	0.00	0.00
20,600.0	90.60	179.52	12,646.5	-7,900.6	337.5	7,907.6	0.00	0.00	0.00
20,700.0	90.60	179.52	12,645.5	-8,000.6	338.3	8,007.5	0.00	0.00	0.00
20,800.0	90.60	179.52	12,644.5	-8,100.6	339.2	8,107.5	0.00	0.00	0.00
20,900.0	90.60	179.52	12,643.4	-8,200.6	340.0	8,207.5	0.00	0.00	0.00
21,000.0	90.60	179.52	12,642.4	-8,300.6	340.9	8,307.4	0.00	0.00	0.00
21,100.0	90.60	179.52	12,641.3	-8,400.6	341.7	8,407.4	0.00	0.00	0.00
21,200.0	90.60	179.52	12,640.3	-8,500.5	342.5	8,507.3	0.00	0.00	0.00
21,300.0	90.60	179.52	12,639.2	-8,600.5	343.4	8,607.3	0.00	0.00	0.00
21,400.0	90.60	179.52	12,638.2	-8,700.5	344.2	8,707.3	0.00	0.00	0.00
21,500.0	90.60	179.52	12,637.1	-8,800.5	345.0	8,807.2	0.00	0.00	0.00
21,600.0	90.60	179.52	12,636.1	-8,900.5	345.9	8,907.2	0.00	0.00	0.00
21,700.0	90.60	179.52	12,635.0	-9,000.5	346.7	9,007.1	0.00	0.00	0.00
21,800.0	90.60	179.52	12,634.0	-9,100.5	347.6	9,107.1	0.00	0.00	0.00
21,900.0	90.60	179.52	12,632.9	-9,200.5	348.4	9,207.0	0.00	0.00	0.00
22,000.0	90.60	179.52	12,631.9	-9,300.5	349.2	9,307.0	0.00	0.00	0.00
22,100.0	90.60	179.52	12,630.8	-9,400.5	350.1	9,407.0	0.00	0.00	0.00
22,200.0	90.60	179.52	12,629.8	-9,500.5	350.9	9,506.9	0.00	0.00	0.00
22,300.0	90.60	179.52	12,628.7	-9,600.5	351.7	9,606.9	0.00	0.00	0.00
22,400.0	90.60	179.52	12,627.7	-9,700.4	352.6	9,706.8	0.00	0.00	0.00
22,500.0	90.60	179.52	12,626.7	-9,800.4	353.4	9,806.8	0.00	0.00	0.00
22,600.0	90.60	179.52	12,625.6	-9,900.4	354.3	9,906.8	0.00	0.00	0.00
22,700.0	90.60	179.52	12,624.6	-10,000.4	355.1	10,006.7	0.00	0.00	0.00
22,807.6	90.60	179.52	12,623.4	-10,108.0	356.0	10,114.3	0.00	0.00	0.00

PBHL (Ruby 2 Fed Com #703H)





Database: EDM 5000.1 Single User Db  
 Company: EOG Resources - Midland  
 Project: Lea County, NM (NAD 27 NME)  
 Site: Ruby 2 Fed Com  
 Well: #703H  
 Wellbore: OH  
 Design: Plan #0.1

Local Co-ordinate Reference: Well #703H  
 TVD Reference: KB = 25' @ 3330.0usft  
 MD Reference: KB = 25' @ 3330.0usft  
 North Reference: Grid  
 Survey Calculation Method: Minimum Curvature

Design Targets

Target Name - hit/miss target - Shape	Dip Angle (°)	Dip Dir. (°)	TVD (usft)	+N/-S (usft)	+E/-W (usft)	Northing (usft)	Easting (usft)	Latitude	Longitude
PBHL (Ruby 2 Fed Com - plan hits target center - Point	0.00	0.00	12,623.4	-10,108.0	356.0	383,482.00	775,539.00	32° 3' 4.274 N	103° 26' 38.414 W
FTP (Ruby 2 Fed Com # - plan misses target center by 38.9usft at 12818.2usft MD (12690.2 TVD, -124.2 N, 271.2 E) - Point	0.00	0.00	12,726.0	-109.0	271.0	393,481.00	775,454.00	32° 4' 43.226 N	103° 26' 38.444 W