

District I  
1625 N. French Dr., Hobbs, NM 88240  
Phone: (575) 393-6161 Fax: (575) 393-0720  
District II  
811 S. First St., Artesia, NM 88210  
Phone: (575) 748-1283 Fax: (575) 748-9720  
District III  
1000 Rio Brazos Road, Aztec, NM 87410  
Phone: (505) 334-6178 Fax: (505) 334-6170  
District IV  
1220 S. St. Francis Dr., Sante Fe, NM 87505  
Phone: (505) 476-3460 Fax: (505) 476-3462

State of New Mexico  
Energy, Minerals & Natural Resources  
Department  
OIL CONSERVATION DIVISION  
1220 South St. Francis Dr.  
Sante Fe, NM 87505

FORM C-102

Revised August 1, 2011

Submit one copy to appropriate

District Office

☐ AMENDED REPORT

WELL LOCATION AND ACREAGE DEDICATION PLAT

<sup>1</sup> API Number 30-025- <b>43 999</b>	<sup>2</sup> Pool Code 98105	<sup>3</sup> Pool Name WC-025 G-09 S2633416B; Upper Wolfcamp
<sup>4</sup> Property Code 40383	<sup>5</sup> Property Name NAUTILUS 16 STATE COM	<sup>6</sup> Well Number #710H
<sup>7</sup> OGRID No. 7377	<sup>8</sup> Operator Name EOG RESOURCES, INC.	<sup>9</sup> Elevation 3330'

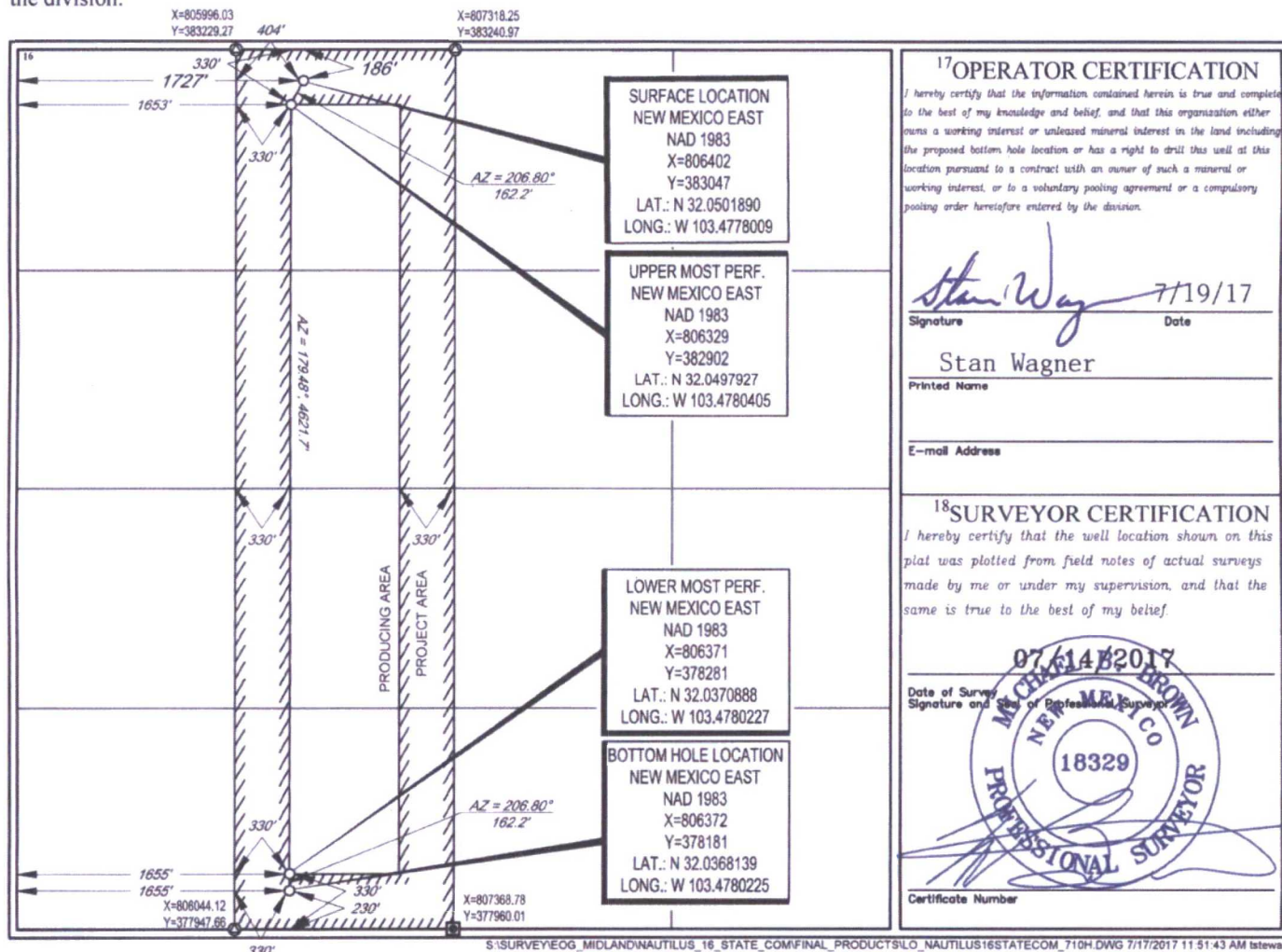
<sup>10</sup>Surface Location

UL or lot no. C	Section 16	Township 26-S	Range 34-E	Lot Idn -	Feet from the 186'	North/South line NORTH	Feet from the 1727'	East/West line WEST	County LEA
--------------------	---------------	------------------	---------------	--------------	-----------------------	---------------------------	------------------------	------------------------	---------------

UL or lot no. N	Section 16	Township 26-S	Range 34-E	Lot Idn -	Feet from the 230'	North/South line SOUTH	Feet from the 1655'	East/West line WEST	County LEA
--------------------	---------------	------------------	---------------	--------------	-----------------------	---------------------------	------------------------	------------------------	---------------

<sup>13</sup> Dedicated Acres 160.00	<sup>13</sup> Joint or Infill	<sup>14</sup> Consolidation Code	<sup>15</sup> Order No.
---	-------------------------------	----------------------------------	-------------------------

No allowable will be assigned to this completion until all interests have been consolidated or a non-standard unit has been approved by the division.



S:\SURVEY\EOG\_MIDLAND\NAUTILUS\_16\_STATE\_COM\FINAL\_PRODUCTS\ILO\_NAUTILUS16STATECOM\_710H.DWG 7/17/2017 11:51:43 AM lbtewart